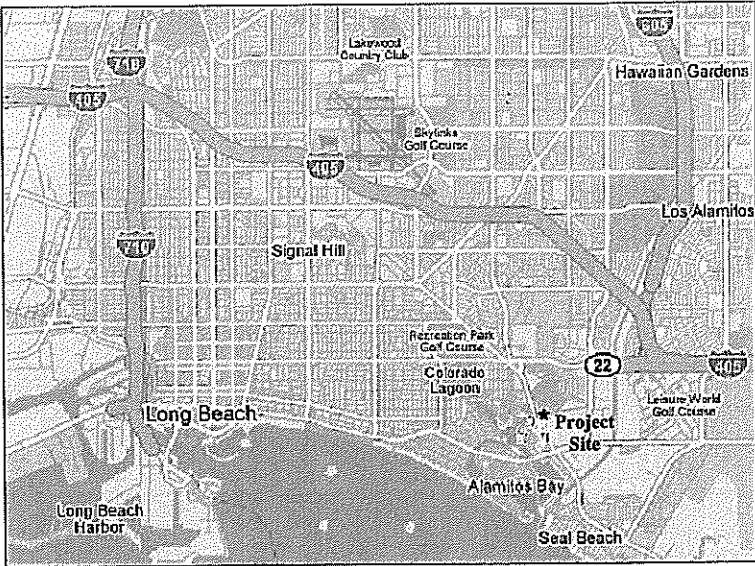


Appendix IX – Project Plans

CERRITOS BAHIA MARINA DREDGING PROJECT



AREA MAP

PREPARED FOR:

CERRITOS BAHIA MARINA
6289 East Pacific Coast Highway
Long Beach, CA 90803
562.431.6575

PREPARED BY:

TETRA TECH, INC
ENGINEERS, PLANNERS & ARCHITECTS
401 EAST OCEAN BLVD., SUITE 420
LONG BEACH, CA 90802
562.495.0495

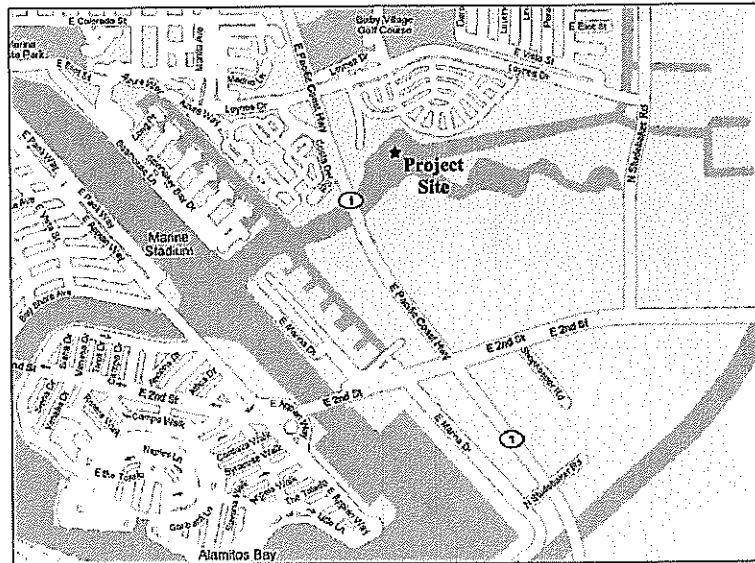
DRAWING LIST		
SHEET	DRAWING REF.	TITLE
1	T-1	TITLE SHEET
2	G-1	GENERAL NOTES
3	C-1	SITE PLAN
4	C-2	PROCESSING PLAN

ISSUE DATES

MARCH 2009

SUBCONSULTANTS

KELLSURVEYS, INC.



VICINITY MAP



SITE MAP



TETRA TECH, INC.
401 EAST OCEAN BLVD., SUITE 420
LONG BEACH, CA 90802
PH: 562.495.0495
FAX: 562.495.5023
WWW.TETRATECH.COM

TC: T23068
DRAWN BY: RJH/NSC/SM
CHECKED BY: RJH/SM
SCALE: NONE
APPROVED BY:
DATE: MAR 2009
CAD FILE: P:\Mac\Projects\T23068\00_Cerritos Bahia Marina\Bahia Site Plan.dwg

CERRITOS BAHIA MARINA
DREDGE PROJECT

T-1

CERRITOS BAHIA MARINA

DRAWING TITLE: TITLE PAGE

SHEET NUMBER: 1 OF 4

GENERAL NOTES:

1. PRIOR TO THE START OF WORK, A PRECONSTRUCTION MEETING WILL BE HELD IN WHICH THE OWNER OR HIS DESIGNATED REPRESENTATIVE, THE DESIGNING ENGINEER/ARCHITECT, THE ENGINEER WHO WILL PERFORM THE STRUCTURAL OBSERVATION, THE CONTRACTOR AND AFFECTED SUBCONTRACTORS AND THE SPECIAL INSPECTORS WILL ATTEND. THE PURPOSE OF THE MEETING WILL BE TO IDENTIFY ALL THE MAJOR STRUCTURAL ELEMENTS AND CONNECTIONS THAT AFFECT THE VERTICAL AND LATERAL LOAD RESISTING SYSTEMS, AND TO REVIEW THE SCHEDULING OF THE STRUCTURAL OBSERVATIONS.
2. CONTRACTOR SHALL COMPLY WITH ALL PERMIT REQUIREMENTS INCLUDING BUT NOT LIMITED TO THE LONG BEACH HARBOR DEVELOPMENT PERMIT, THE USACE PERMIT AND THE CALIFORNIA REGIONAL WATER QUALITY CONTROL BOARD PERMIT FOR THIS PROJECT.
3. CONTRACTOR WILL COORDINATE WITH HARBOR MASTER FOR SCHEDULING OF BOAT RELOCATION. CONTRACTOR WILL NOT BE REQUIRED TO RELOCATE BOATS.
4. CONTRACTOR SHALL NOTIFY PROJECT MANAGER AT (562) 73-1215 NO LATER THAN 72 HOURS PRIOR TO BEGINNING WORK ON SITE.

ISSUE DATES
NOVEMBER 2006

SUBCONSULTANTS
KELSURVEYS, INC.

AERIAL PHOTO: DIGITAL MAPPING, INC.
21062 BROOKHURST STREET, STE. 101
HUNTINGTON BEACH, CA 92646
714.968.5459
PERFORMED: 02.24.99

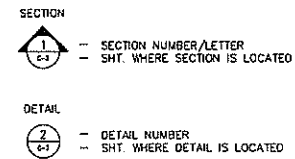
TOPOGRAPHIC SURVEY: KELSURVEYS, INC.
3100 AIRWAY AVENUE, STE. 125
COSTA MESA, CA 92626
714.708.3301
LIC #: LS 6178
PERFORMED: 06.06.05

BATHYMETRIC SURVEY: TETRA TECH, INC.
401 EAST OCEAN BOULEVARD, STE. 420
LONG BEACH, CA 90802
562.495.0495
PERFORMED: 06.08.05

SURVEY CONTROL:

STATION NAME: 6044
MONUMENT TYPE: GEAR SPIKE AND WASHER
HORIZONTAL COORDINATES: (NAD27 - ZONE 7 - U.S. SURVEY FEET)
NORTHING(Y): 4023158.256
EASTING(X): 4228860.449
ELEVATION: +14.20 FEET (MLLW - NGVD29 NOV. 1999 ADJ.)
DESCRIPTION:
STATION IS LOCATED ON NORTH SIDE OF ROAD OPPOSITE RESTROOM BUILDING.

REFERENCE LEGEND



TETRA TECH, INC.	
401 EAST OCEAN BLVD., SUITE 420	
LONG BEACH, CA 90802	
PH: 562.495.0495	
FAX: 562.495.5023	
WWW.TETRATECH.COM	
TC:	T23059
DRAWN BY:	RJH/NSC/SM
CHECKED BY:	RJH/SM
SCALE:	NONE
APPROVED BY:	
DATE:	MAR 2009
CAD FILE:	P:\Mac Projects\T23059_Cerritos Bahia Marina.dwg\Bahia Sta Plan.dwg

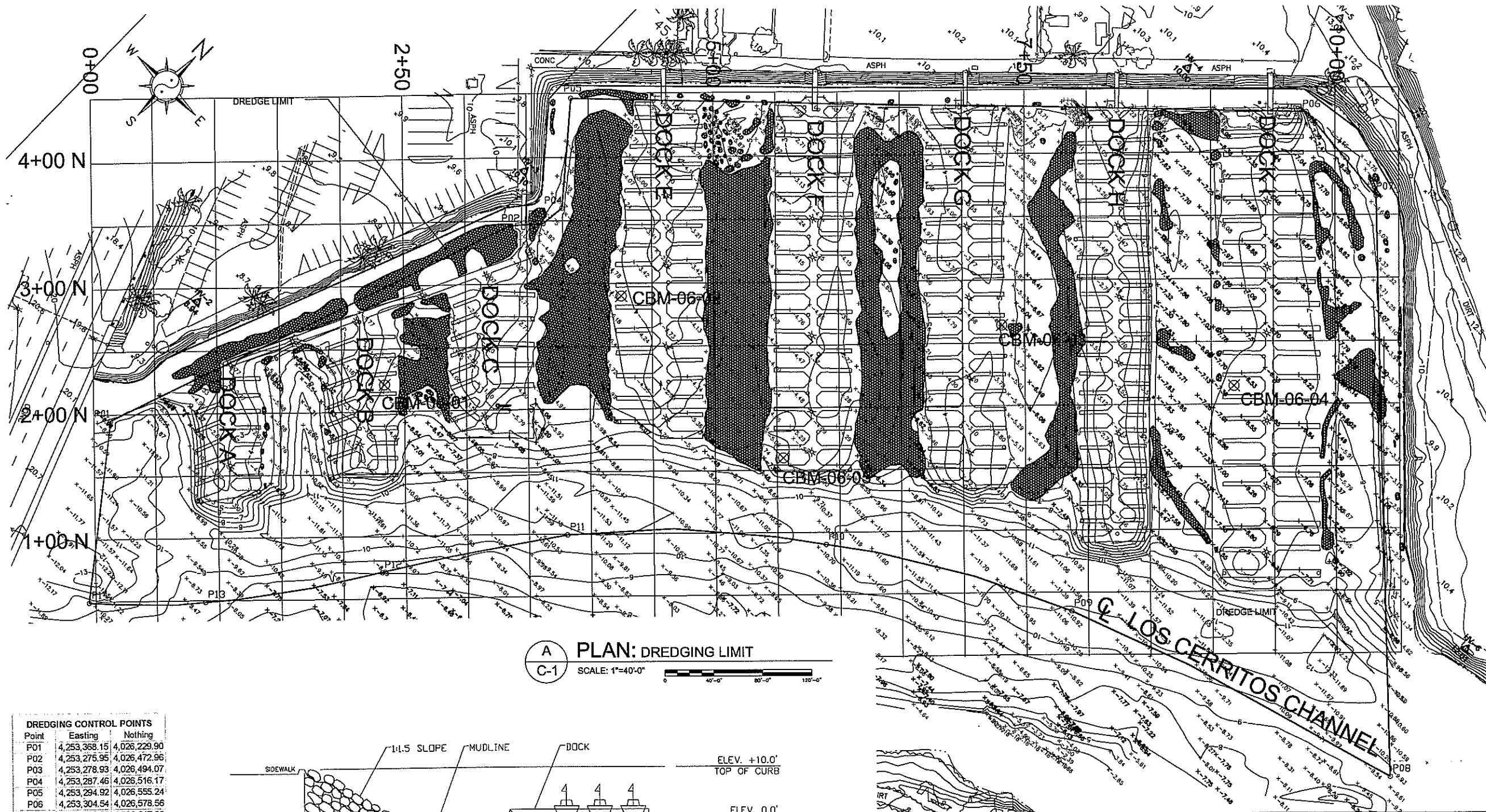
CERRITOS BAHIA MARINA
DREDGE PROJECT

G-1

CERRITOS BAHIA MARINA

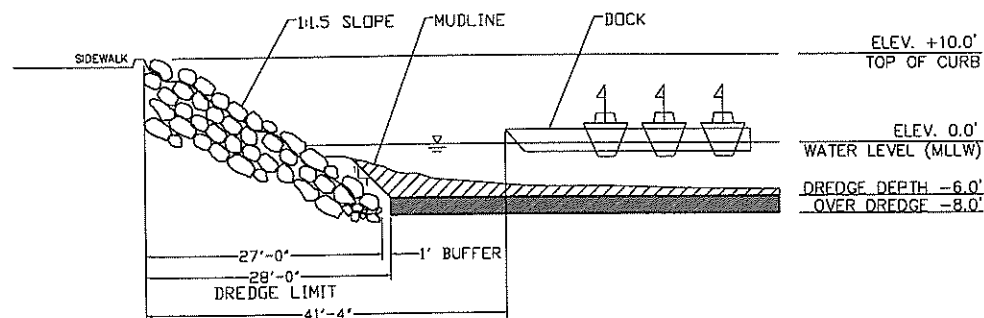
DRAWING TITLE: GENERAL NOTES

SHEET NUMBER: 2 OF 4



A PLAN: DREDGING LIMIT
SCALE: 1"=40'-0"

Point	Easting	Nothing
P01	4,253,358.15	4,026,229.90
P02	4,253,275.95	4,026,472.96
P03	4,253,278.93	4,026,494.07
P04	4,253,287.46	4,026,516.17
P05	4,253,294.92	4,026,555.24
P06	4,253,304.54	4,026,578.56
P07	4,253,322.86	4,026,617.33
P08	4,253,344.71	4,026,674.22
P09	4,253,352.51	4,026,708.65
P10	4,253,362.45	4,026,735.64
P11	4,253,375.66	4,026,766.36
P12	4,253,382.28	4,026,784.46
P13	4,253,389.31	4,026,803.09
P14	4,253,392.98	4,026,811.60
P15	4,253,410.84	4,026,831.93
P16	4,253,413.01	4,026,851.30
P17	4,253,382.54	4,026,887.56
P18	4,253,358.55	4,026,907.51
P19	4,253,356.83	4,026,917.54
P20	4,253,782.74	4,027,327.28
P21	4,253,808.26	4,027,333.26
P22	4,253,869.38	4,027,320.30
P23	4,253,903.82	4,027,293.36
P24	4,253,931.71	4,027,253.63
P25	4,253,975.57	4,027,213.76
P26	4,254,029.37	4,027,166.15
P27	4,254,070.39	4,027,128.80
P28	4,254,101.02	4,027,103.55
P29	4,254,117.04	4,027,089.06
P30	4,254,157.41	4,027,081.01
P31	4,254,201.19	4,027,090.19



B SECTION: SLOPE AT DREDGE LIMIT (TYP)
SCALE: 1"=10'-0"

Point	Easting	Nothing	% Gravel	% Sand	% Silt	% Clay
CMB-06-01	4253129.56	4026687.42	0.00	44.97	44.64	10.40
CMB-06-02	4253214.34	4026836.80	0.00	33.32	54.30	12.38
CMB-06-03	4253456.16	4027052.04	0.00	34.16	53.06	12.78
CMB-06-04	4253502.67	4026843.11	0.00	43.25	47.84	9.51
CMB-06-05	4253359.72	4026848.11	0.00	46.54	42.37	11.09

AVAILABLE DREDGE QUANTITY:

CUT (-6' MLLW)	11,086 CY
OD (+2')	+ 15,781 CY
TOTAL	26,867 CY

Point	Nothing	Easting	Elevation
HV-2 BASE	4,026,592.57	4,253,256.85	8.94
HV-3	4,026,850.56	4,253,370.88	10.08
HV-4	4,027,284.09	4,253,690.89	10.00
HV-5	4,027,388.51	4,253,749.12	13.00
HV-6	4,027,115.05	4,254,176.09	12.01

NOTES:

- CONTOUR INTERVAL - 1 FOOT.
- DEPTHS ARE SHOWN IN FEET BELOW MLLW.
- SURVEY DATA WAS COLLECTED IN CALIFORNIA STATE PLANE COORDINATES; NAD 27, ZONE 7, U.S. SURVEY FEET BY TETRA TECH OCTOBER 24 AND 27, 2008. TOPOGRAPHIC SURVEY WAS CONDUCTED BY KELSURVEYS ON MAY 25, 2005.
- AERIAL PHOTOGRAPH NOT GEO-REFERENCED.
- EELGRASS SURVEY WAS CONDUCTED BY TETRA TECH ON OCTOBER 22, 28, 30, 2008.
- DOCK G AND I REPLACED 1994.

LEGEND:

= EELGRASS, OCTOBER 2008

= CONTOUR ELEVATIONS

= CBM-06-01 = SEDIMENT SAMPLE LOCATION (AUG 2008)

TETRA TECH, INC.
401 EAST OCEAN BLVD., SUITE 420
LONG BEACH, CA 90802
PH. 562.495.0495 FAX 562.495.5029
WWW.TETRA TECH.COM

TC: T23068
DRAWN BY: RJH/NSC/M
CHECKED BY: RJH/SM
SCALE: AS NOTED
APPROVED BY:
DATE: MAR 2009
CAD FILE: Final/State Plan.dwg

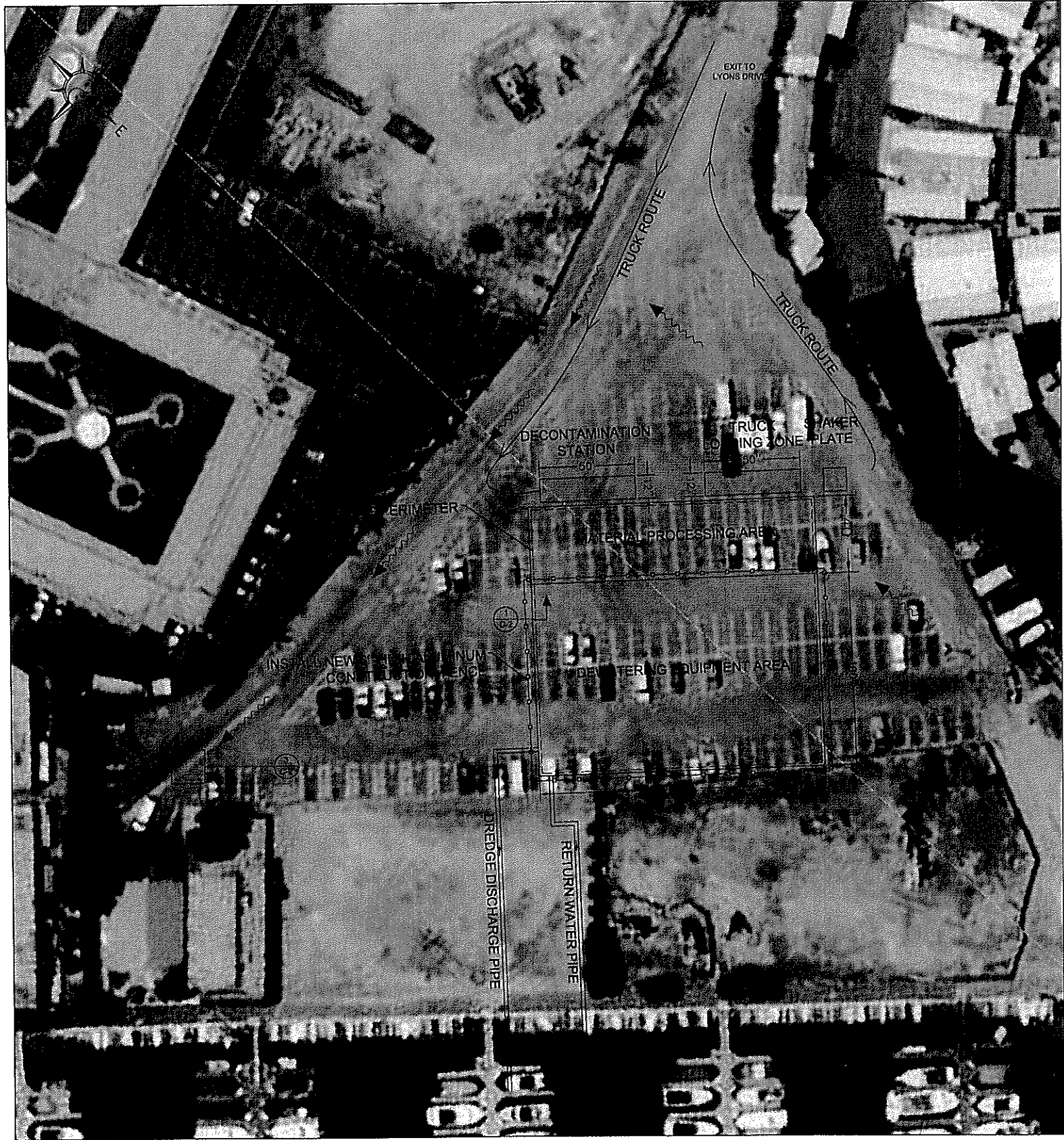
CERRITOS BAHIA MARINA
DREDGE PROJECT

C-1

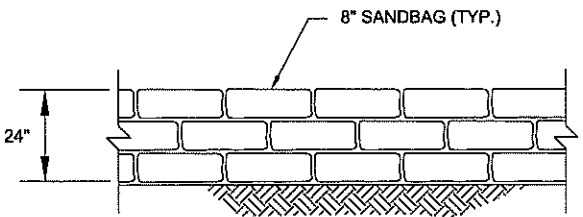
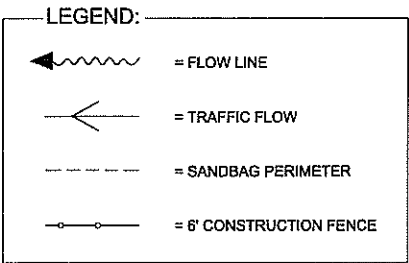
CERRITOS BAHIA MARINA

DRAWING TITLE: SITE PLAN

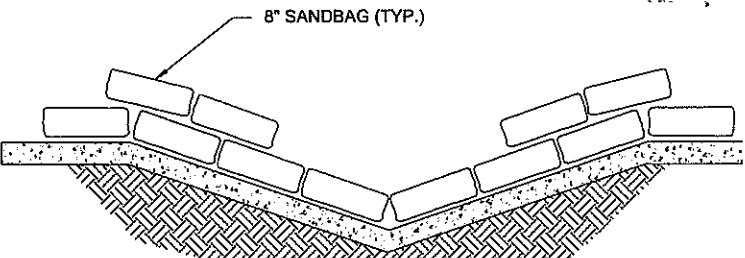
SHEET NUMBER: 3 OF 4



A
D-1 **PLAN: PROCESSING PLAN**
SCALE: NTS



1
C-2 **TYPICAL STANDARD DETAIL**
SCALE: NTS



2
C-2 **SURFACE DRAINAGE PROTECTION**
SCALE: NTS

ISSUE DATES

MARCH 2009

SUBCONSULTANTS

KELLSURVEYS, INC.

TETRA TECH, INC.
401 EAST OCEAN BLVD., SUITE 420
LONG BEACH, CA 90802
PH: 562.495.0495
FAX: 562.495.5029
WWW.TETRATECH.COM

TC: T23068

DRAWN BY: RJH/NSC/SM

CHECKED BY: RJH/SM

SCALE: AS NOTED

APPROVED BY:

DATE: MAR 2009

CAD FILE: Final/BAHIA Site Planning

CERRITOS BAHIA MARINA
DREDGE PROJECT

C-2

CERRITOS BAHIA MARINA

DRAWING TITLE: PROCESSING PLAN

SHEET NUMBER: 4 OF 4