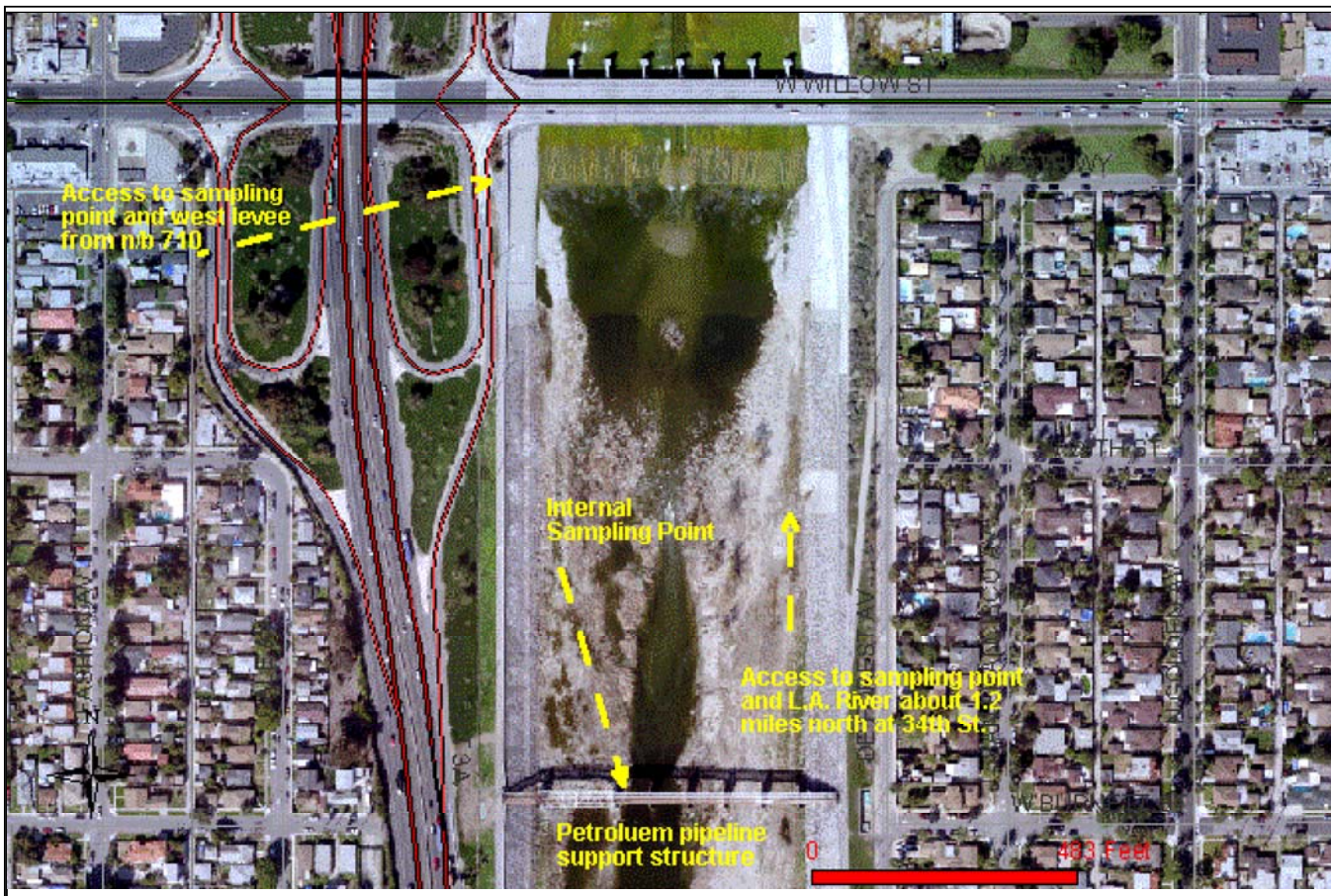


LOS ANGELES COUNTY DEPARTMENT OF PUBLIC WORKS



NOTES:

Figure 2 - Internal sampling point (#2) located about 1175' s/o Willow St. Bridge
 over L.A. River; sampling point between 2nd and 3rd supports of pipeline support
 structure; access from n/b 710 off-ramp to E. Willow St. or from access ramp to
 L.A. River about 1.2 miles north at west end of 34th St., s/o Wardlow Rd.



LOS ANGELES COUNTY
 DEPARTMENT OF PUBLIC WORKS
 900 S. Fremont Ave.
 Alhambra, CA 91803

L.A. River West/Reach 25 SBC Cleanout - Fall 2012

(Printed using View LA 15-Jan-13)



Data contained in this map is produced in whole or part from the Thomas Bros. Maps® digital database. This map is copyrighted, and reproduced with permission granted by Thomas Bros. Maps®. All rights reserved.

Data contained in this map was produced in whole or part from the Los Angeles County Department of Public Works.