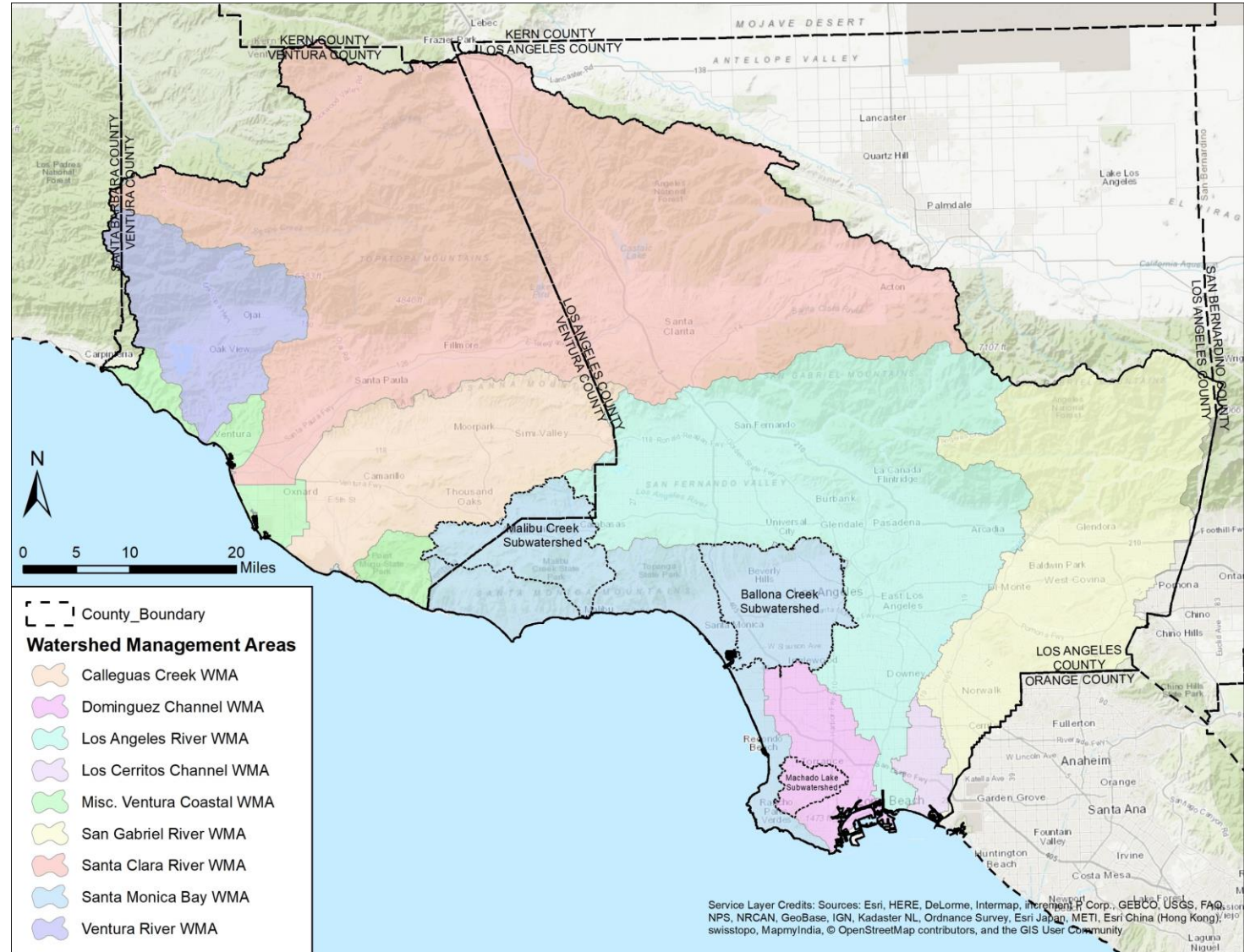


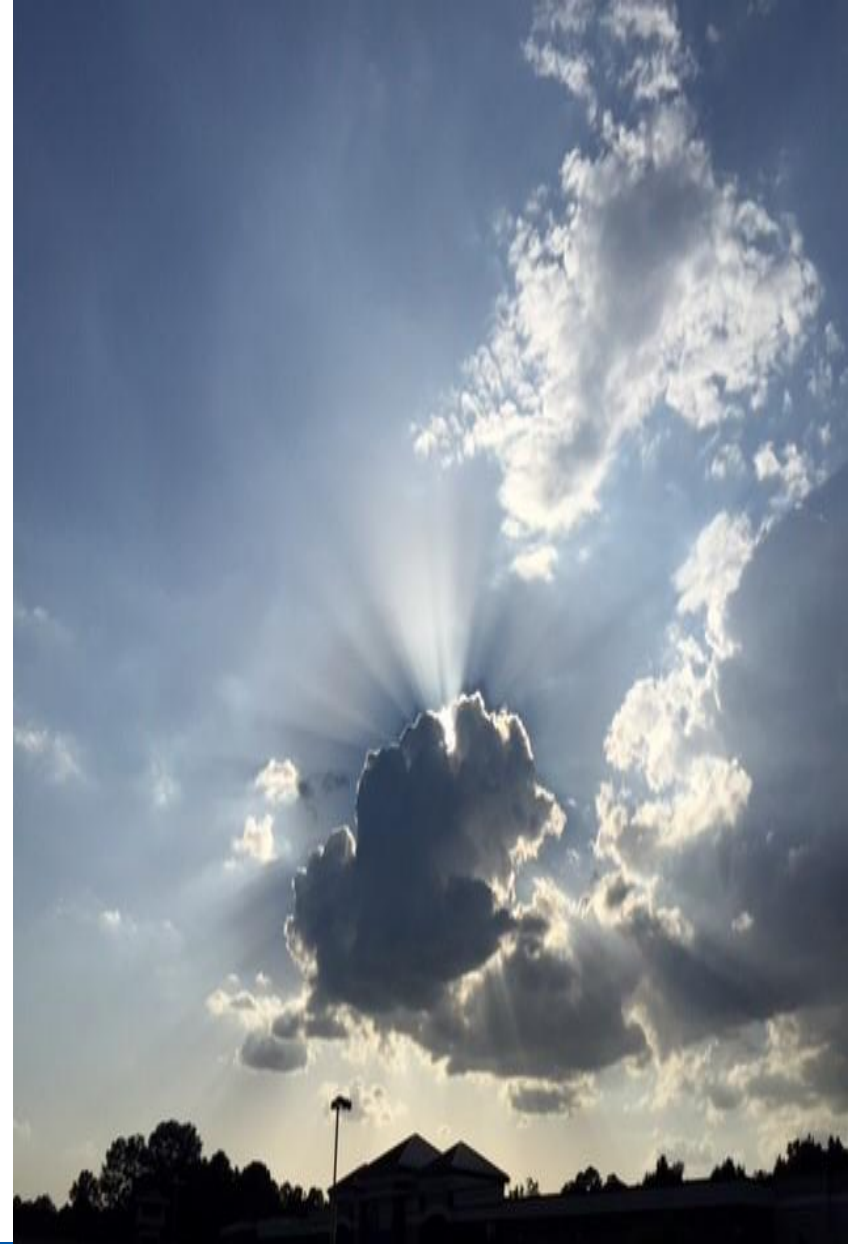
Los Angeles Regional Water Quality Control Board

- One of 9 regional boards in the California Water Boards
- Coastal watersheds of Los Angeles and Ventura Counties
- NPDES permit authority
- Additional authority under Division 7 of the California Water Code, State Water Board plans and policies, and Basin Plan



CII Permit Considerations

- Coordination between Los Angeles Water Board, USEPA, State Water Board, and stakeholders
- Permit limited to two watersheds
- General permit for all CII facilities
 - Individual permittees enroll under general permit
 - Enrollment package specific to each permittee



Potential Permit Requirements

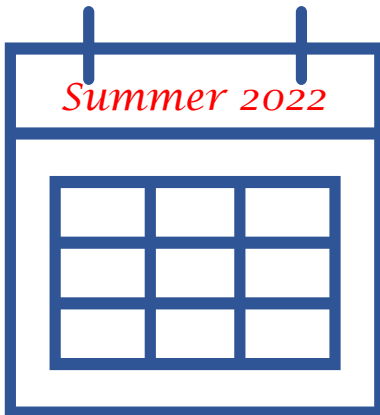
- Enroll via Stormwater Multiple Application and Report Tracking System (SMARTS)
- Pay fees
- Prohibit discharges during dry weather
- Conduct monitoring and reporting
- Implement controls to reduce pollutants in stormwater
- Meet numeric limits for stormwater
- Reasonable enrollment dates and date(s) for compliance

Potential Compliance Options for Numeric Limits


- Onsite compliance with numeric limits
- Onsite capture and use, infiltration, or evapotranspiration of runoff produced by the 85th percentile 24-hour storm
- Agreement with local watershed management group to help fund watershed management program



Next Steps



- Ongoing coordination between USEPA, Los Angeles Water Board, and State Water Board
- December: Public meetings with stakeholders, including potential permittees
- Spring 2022: Simultaneously notice draft permit and draft designation for public comment
- Spring 2022: Potential workshops
- Spring/Summer 2022: USEPA final designation and Los Angeles Water Board adoption hearing



For more information contact:
R9RDA@epa.gov

Questions?