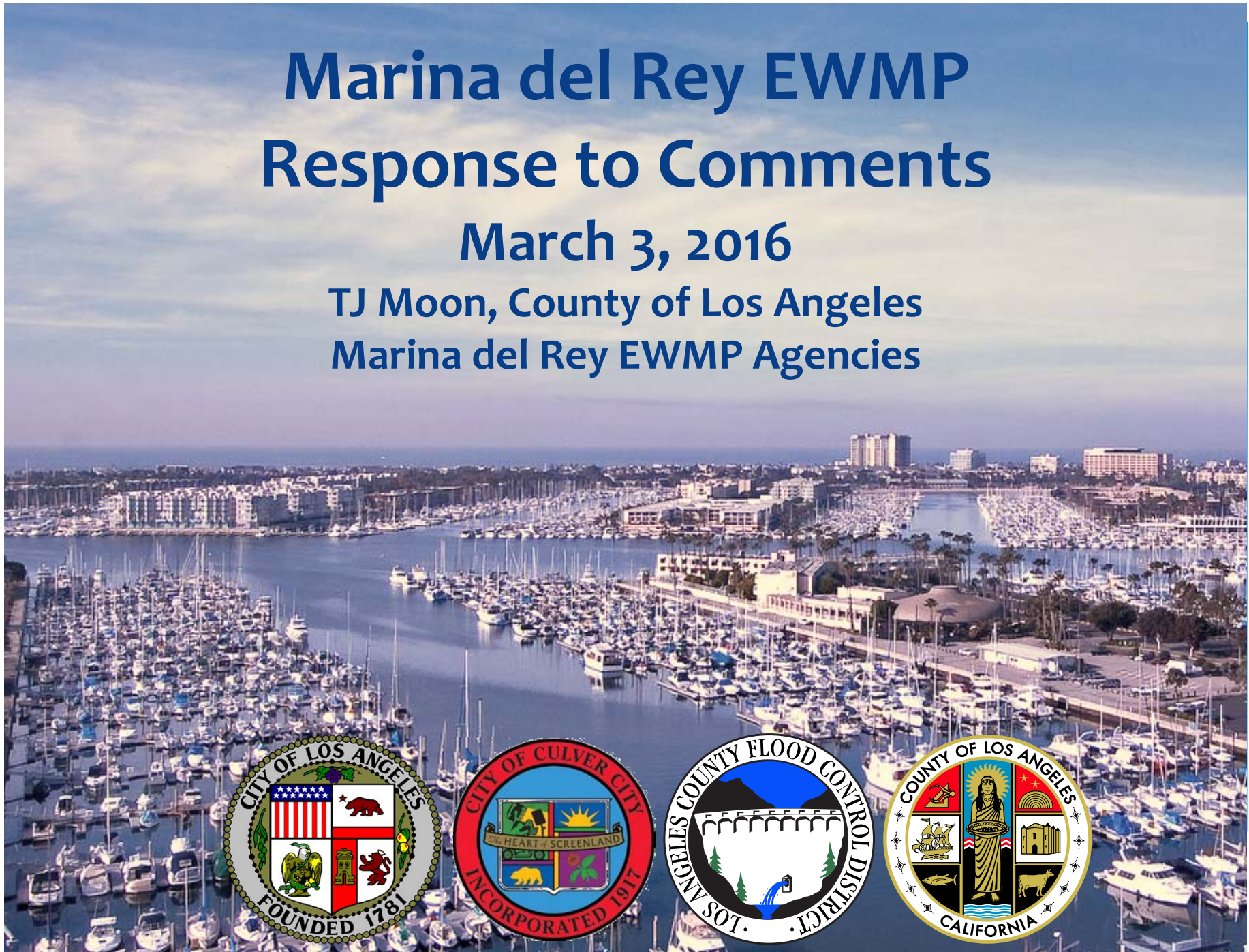


Marina del Rey EWMP Response to Comments

March 3, 2016

TJ Moon, County of Los Angeles
Marina del Rey EWMP Agencies



Marina del Rey Watershed

- 1,409 Acres
- High groundwater
- Limited open space
- TMDLs
 - Metals/Toxics (2018 & 2021)
 - Bacteria - Dry (2017)
 - Bacteria - Wet (2021)
 - Trash (2015)
 - Organic Pesticides



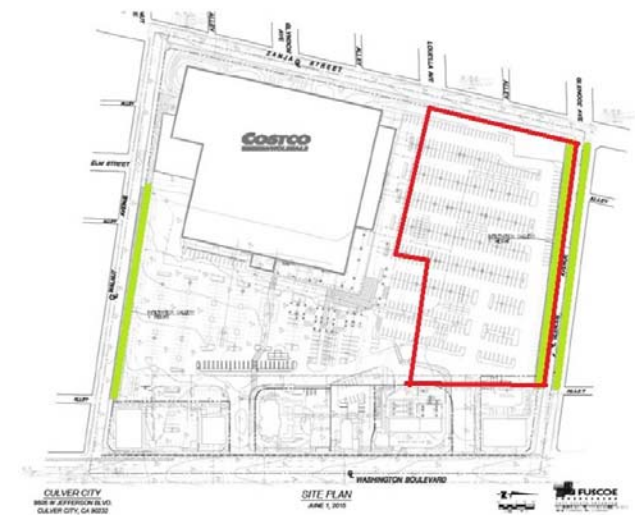
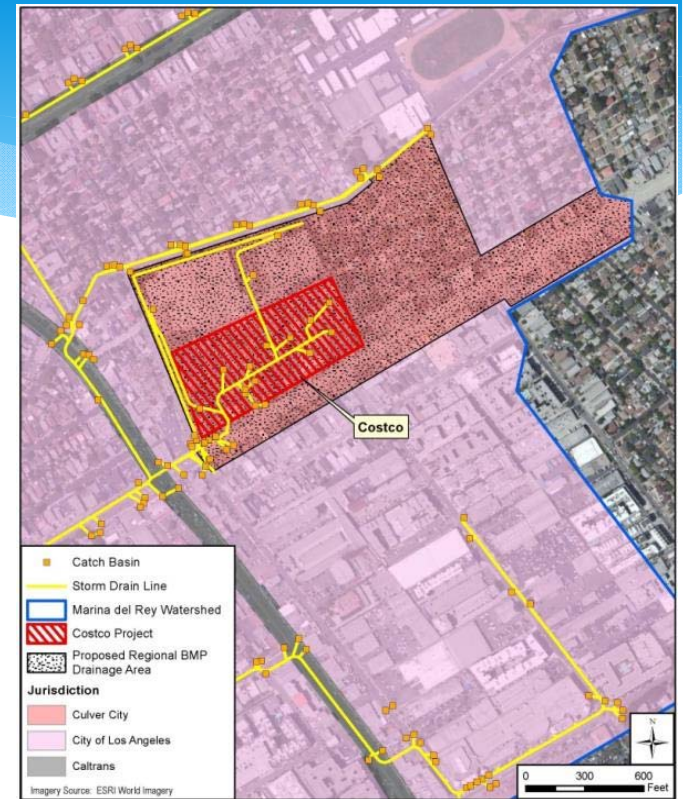
Regional Board Comments

Major Comments	Incorporated
Provide clarification for non-structural assumptions, schedules, figures, MCMs	✓
Provide additional Project milestones	✓
Update Water Body Pollution Combinations	✓
Include Discussion of Costco and Oxford Basin projects	✓
Further discuss funding strategy	✓
RAA – Clarifications, controlling pollutant, 85 th percentiles, critical years, calibration coefficients	✓

Submitted revised EWMP on January 27, 2016
with comment response matrix

Costco Project

- Culver City – Costco partnership
- Capture 100% of 85th Percentile event from 57 acres (42 – Culver City, 15 – City of LA)
- Awarded \$767,136 by the 2015 Countywide Competitive Grant Program (Prop A – LA County Regional Park and Open Space District)
- Total Project Cost: ~\$4 M
- Remaining funds of to be paid by Costco & Culver City
- Project Completion - late 2017/early 2018



Oxford Basin Project

- LACFCD – County project
- Converts detention basin to wetlands
- Awarded \$2M by Prop. 84 (SMBRC)
- Awarded \$1.5 M by Prop. 84 (IRWMP)
- Total Project Cost: ~\$12 M
- In-Basin work completed – December 2015
- Project Completion – Summer 2016



Conclusion



Library Parking Lot – Summer 2017



Parking Lot 9 – Summer 2016