

NORTH SANTA MONICA BAY COASTAL WATERSHEDS

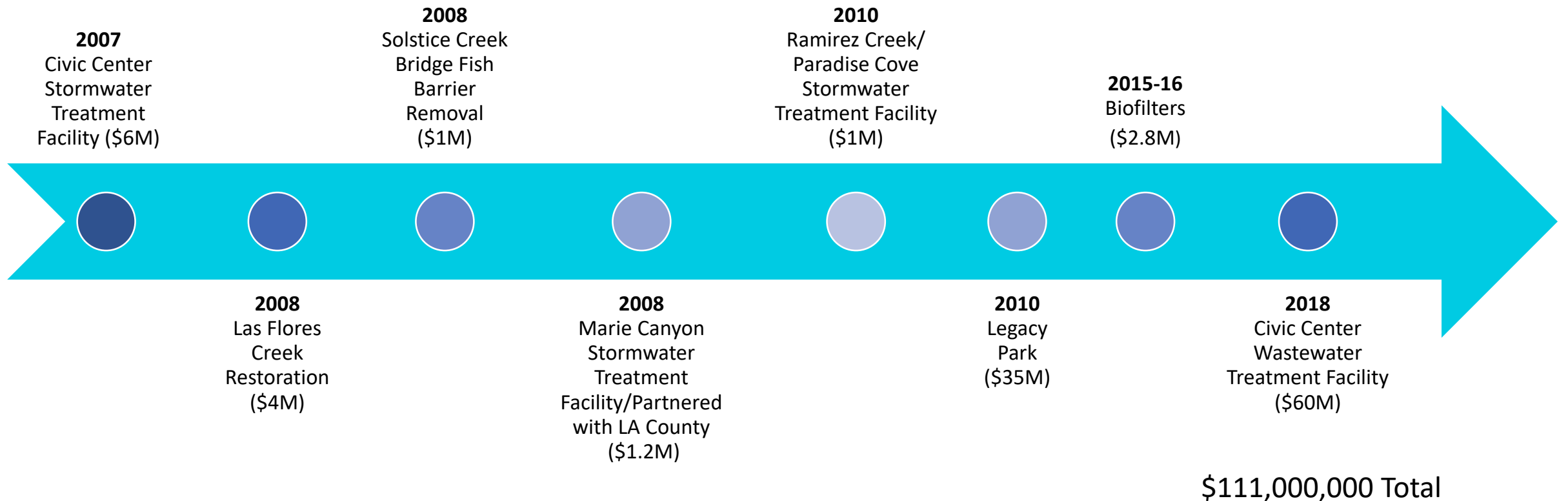
Los Angeles Regional Water Quality
Control Board

MS4 Permit Workshop
July 12, 2018



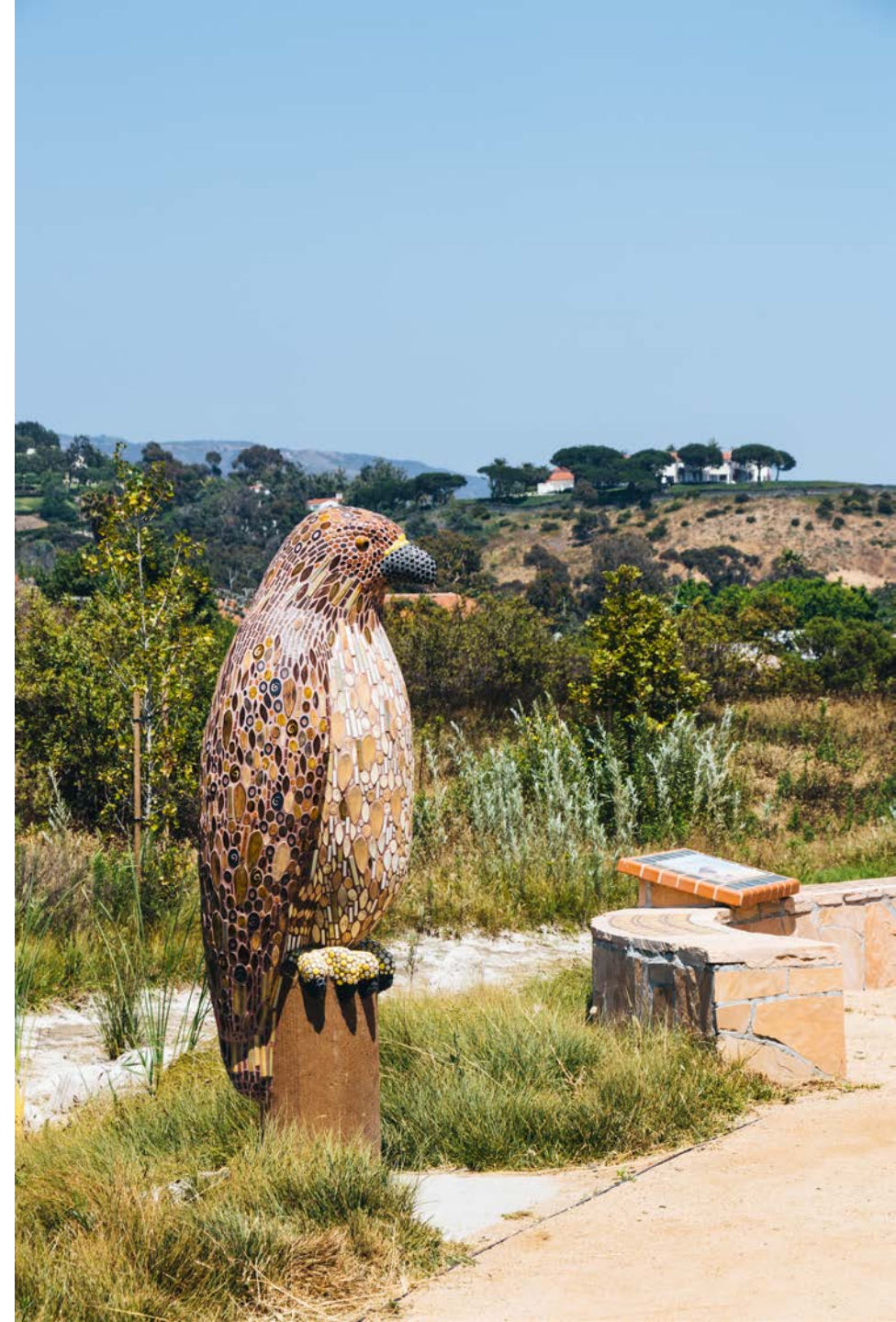
STORMWATER AND NON-STORMWATER TREATMENT

Early (Pre-EWMP) Water Quality Improvement Projects



LEGACY PARK

- Reduces stormwater pollution loads
- Captures up to 2.6 million gallons per day of stormwater runoff from 300 acres
- Capable of retaining an 85th percentile, 24-hour storm
- Operates as part of NSMBCW Enhanced Watershed Management Program



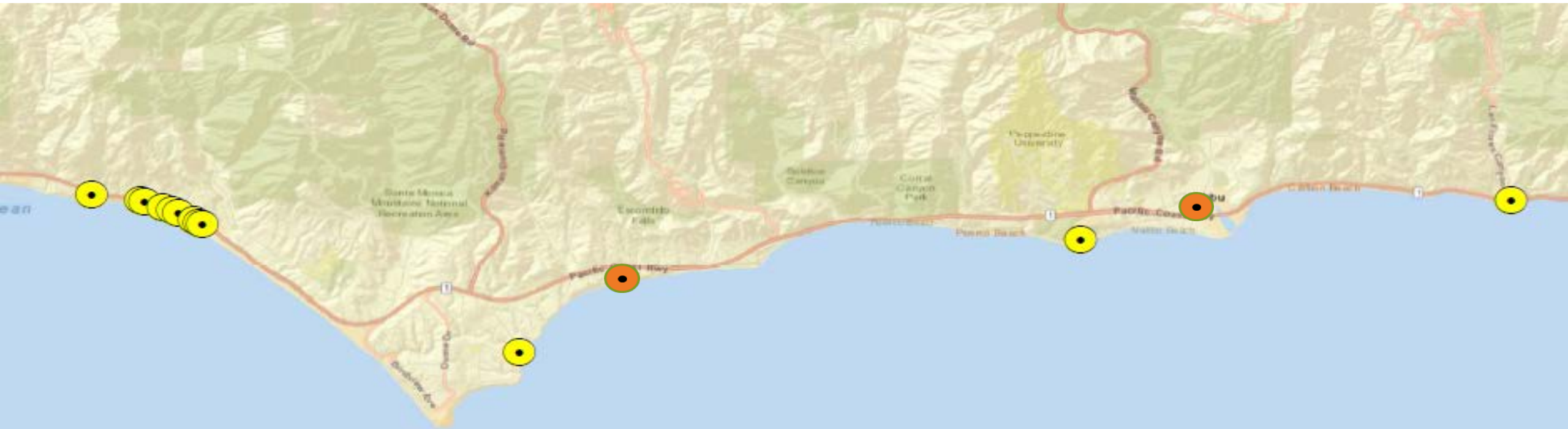
RUNOFF TREATMENT

Biofilters 

- City Locations

Storm Drain Diversions 

- Civic Center / Legacy Park
- Paradise Cove / Ramirez Creek



PUBLIC INFORMATION AND PARTICIPATION PROGRAM

Events

- Malibu Arts Festival
- Malibu Farmers Market
- Earth Day Festival
- Malibu One Water Festival
- 21 Events in Malibu since 2012

Storm Drain Art

- Cross Creek Road
- Morning View Drive
- Trancas Canyon Park
- Heathercliff Road

Fall 2018

- 3 new designs
- 1 touch up
- 1 new project

WATER QUALITY MONITORING AND REPORTING

- Integrated Monitoring and Reporting (TMDL and CIMP sites)
- Non-stormwater Outfall Monitoring
- Semi-Annual and Annual Reports

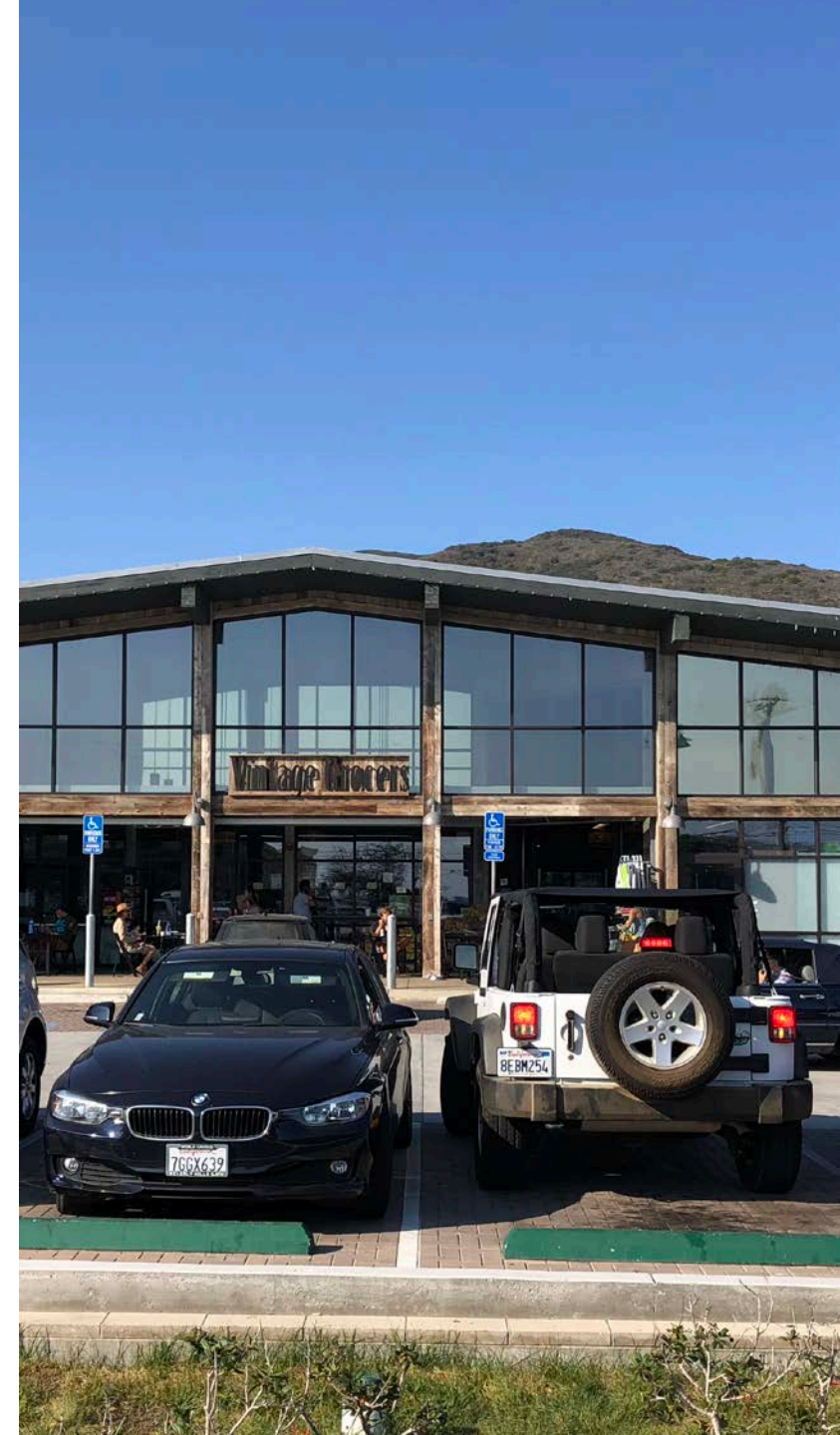
MALIBU PLASTIC BANS

- Polystyrene Foam
- Plastic Shopping Bags and Sandbags
- Plastic Straws, Stirrers, and Cutlery

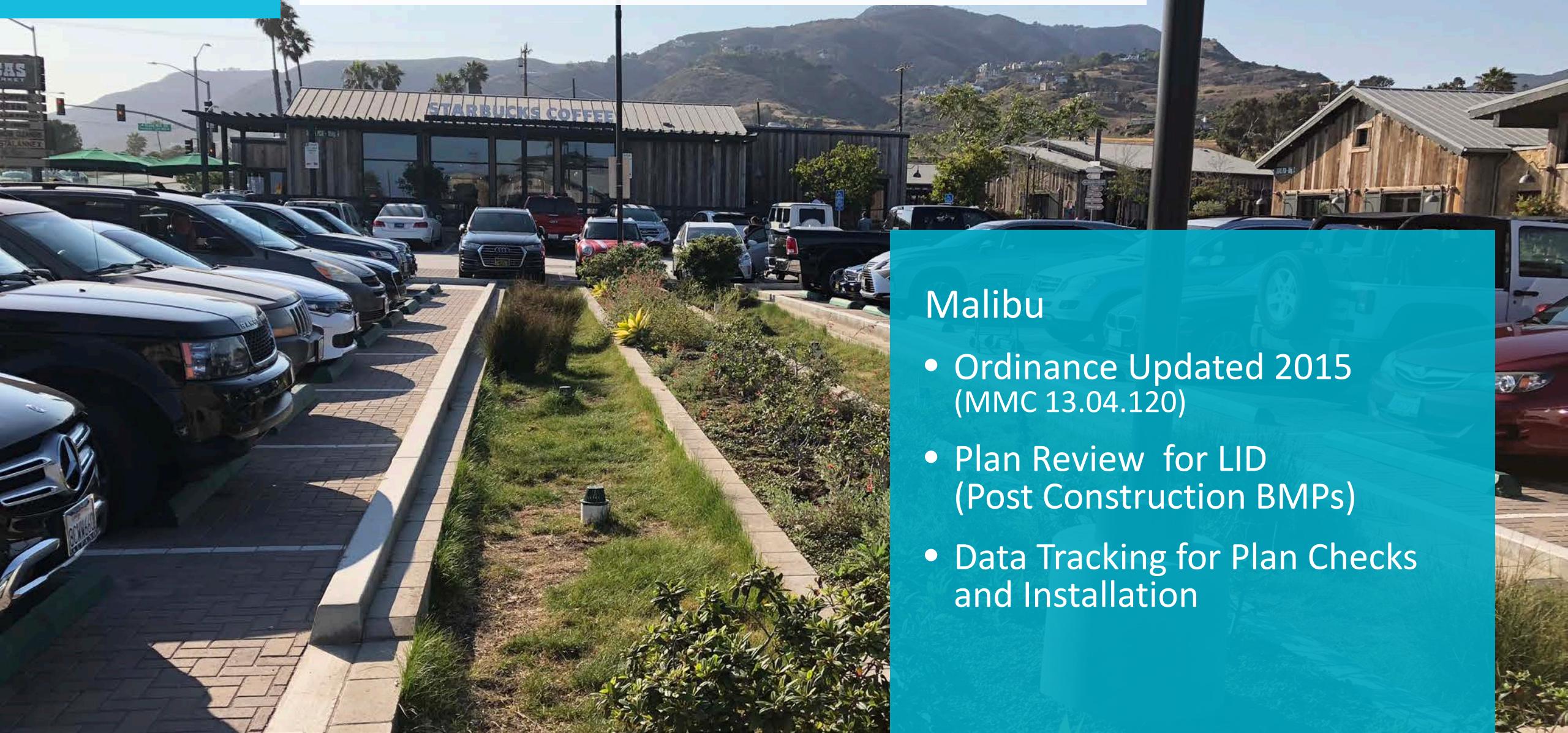


COMMERCIAL AND INDUSTRIAL INSPECTION PROGRAM

- Clean Bay Certified Restaurants
- 2x Per Year – Enhanced MCM
- Trash and Plastic Reduction



PLANNING AND LAND DEVELOPMENT PROGRAM



Malibu

- Ordinance Updated 2015 (MMC 13.04.120)
- Plan Review for LID (Post Construction BMPs)
- Data Tracking for Plan Checks and Installation

COUNTY OF LOS ANGELES LID ORDINANCE

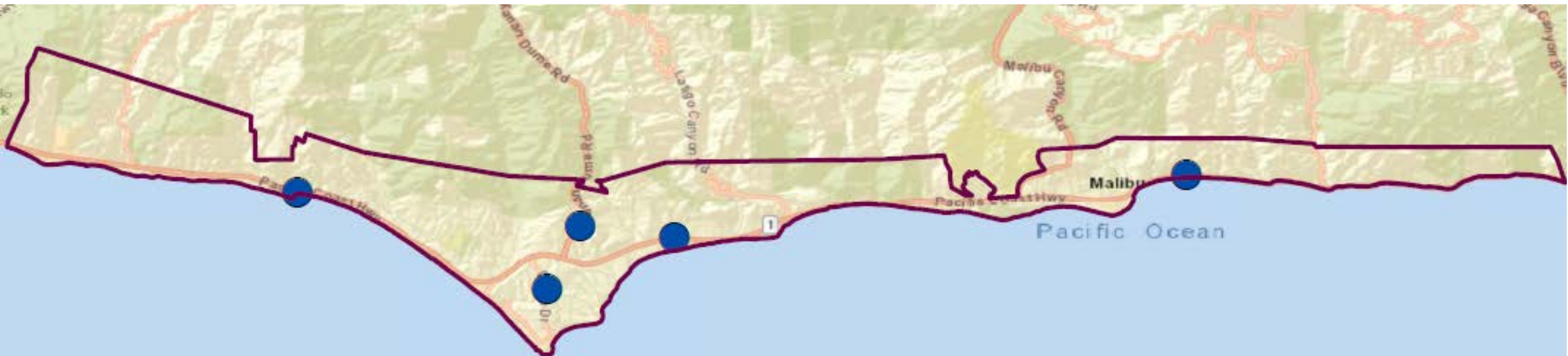
- Introduced in 2009 and Revised in 2012
- Redevelopment & New Development



CITY OF MALIBU LID SITES

Stormwater Capture

- Onsite Retention
- Biofiltration



DEVELOPMENT CONSTRUCTION PROGRAM

- Ordinance Updated 2015 (MMC 13.04.120)
- Construction Inspections
- Data Tracking



ILLICIT DISCHARGE AND ILLICIT CONNECTION ELIMINATION PROGRAM

- Source Identification and Elimination
- Identification and Response to Illicit Connections
- Public Reporting Hotline
- Spill Response
- Training

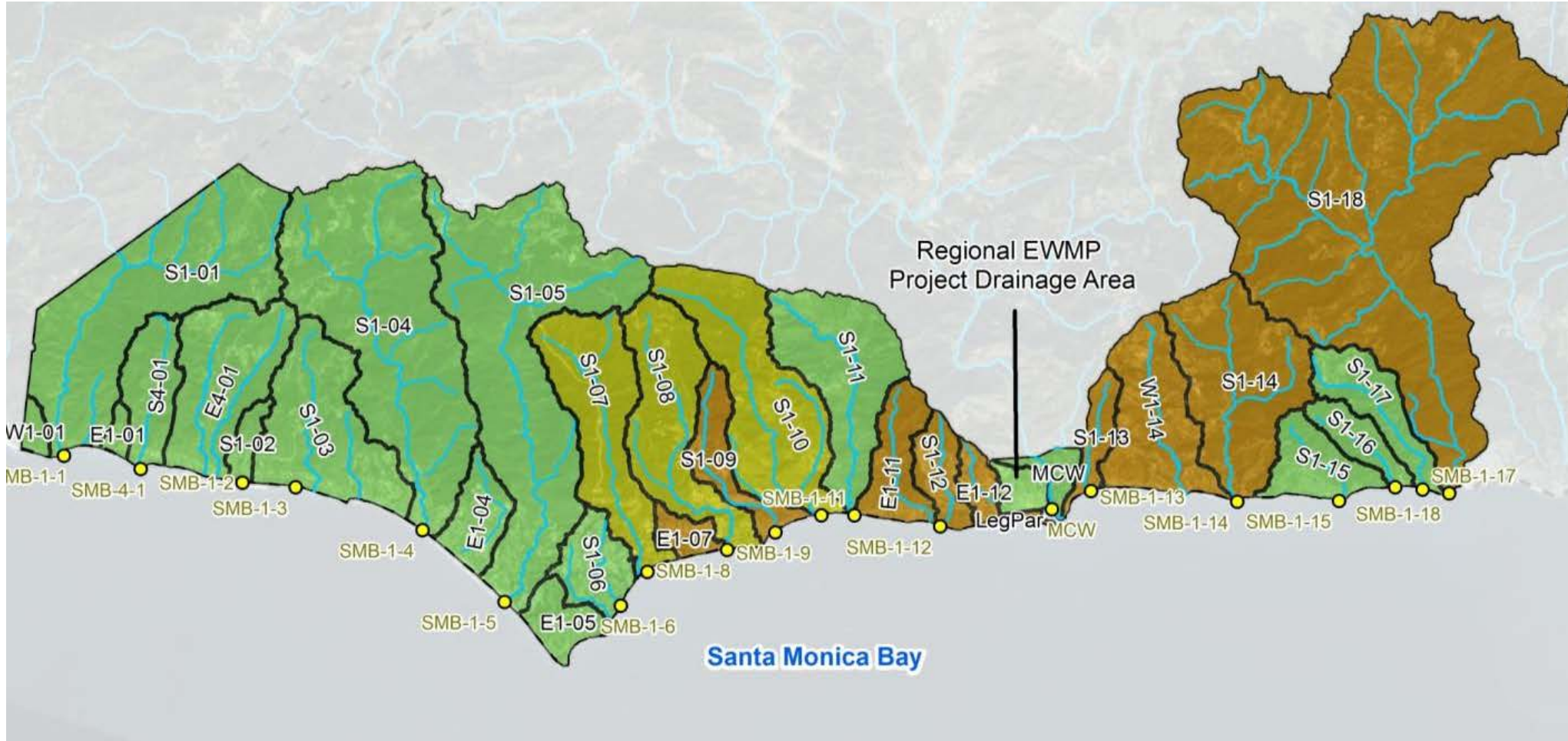


MCMs & MCM ENHANCEMENTS/MODIFICATIONS

- Catch Basin Cleaning Program Enhancements
- Street Sweeping Enhancements
- Evaluated Metal Building Controls



ENHANCED WATERSHED MANAGEMENT PROGRAM

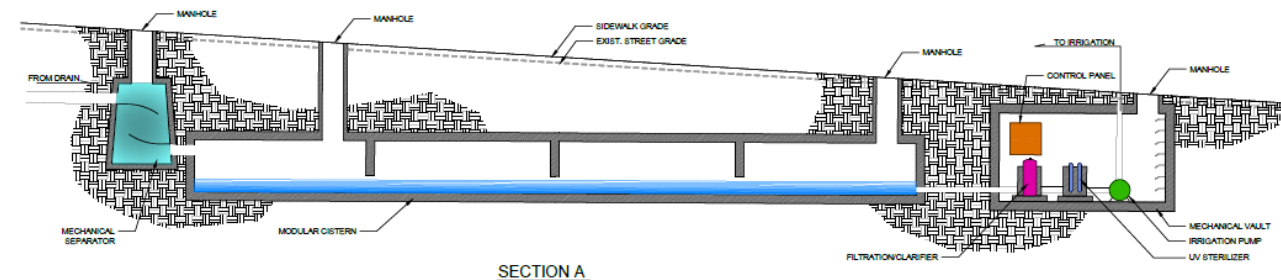
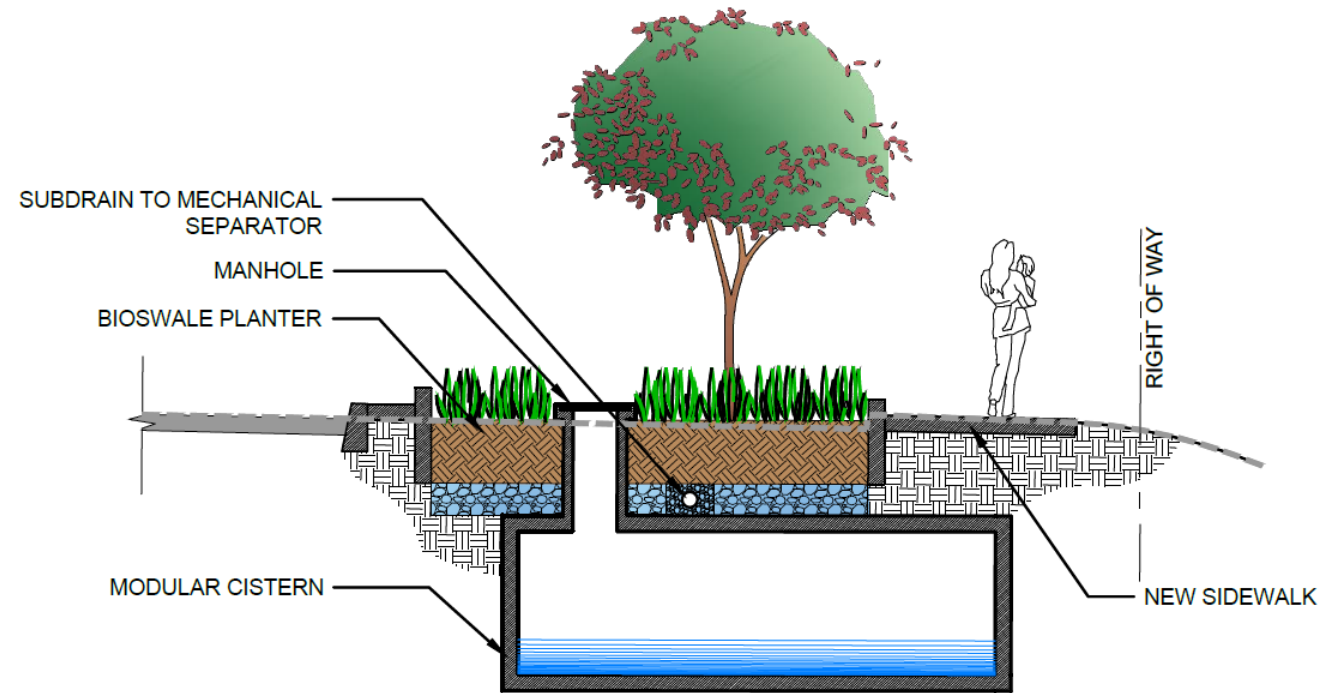


Brown: Additional structural and non-structural controls

Yellow: Additional non-structural controls

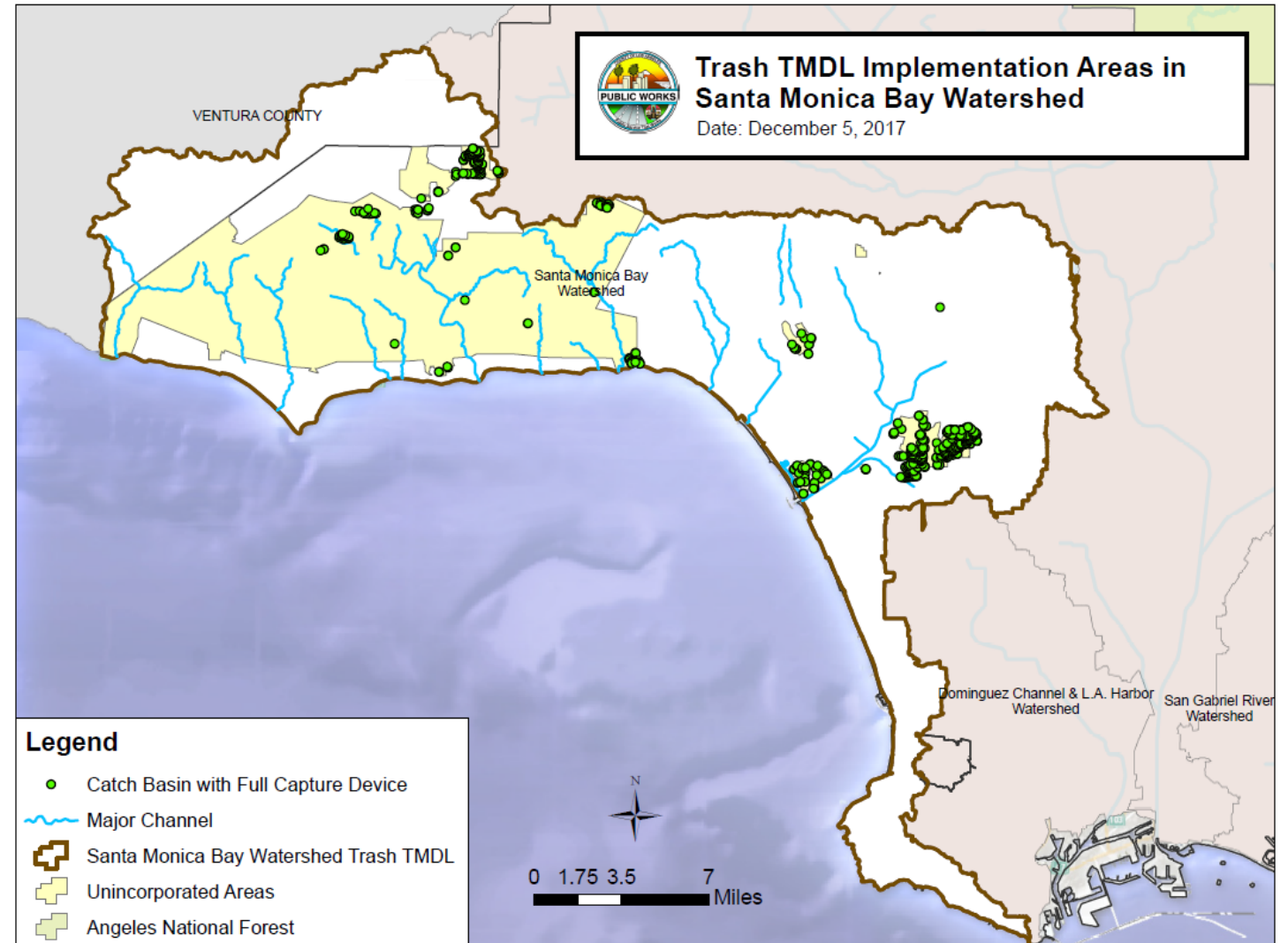
COUNTY OF LOS ANGELES VIEWRIDGE ROAD SUPER GREEN STREETS

- Above & Below Ground Regional BMP
- Estimated 81 acre drainage area
- Multi benefit (recreation, water supply, flood control)
- Estimated cost \$4.3 million



FULL CAPTURE DEVICES RETROFITTED IN SMB

- Installed in Phases Throughout LA County Catch Basins
- 716 Devices Installed Between 2005-2016



EWMP STRUCTURAL CONTROL MEASURES

EWMP Distributed Green Streets BMPs

- Ramirez Canyon
- Las Flores Canyon
- Latigo Canyon
- Corral Canyon
- Marie Canyon
- Winter Canyon
- Sweetwater Canyon

Multiple Benefits of Green Street Distributed BMPs

- Beneficial Use Protection
- Neighborhood Greening
- Water Conservation/Supply
- Public Education/Awareness





QUALITY • CONSERVATION • REUSE
ONE WATER
malibu

