



# Progress of NPDES Permit Implementation Upper Santa Clara River Watershed

Presentation to Los Angeles Regional Water Quality Control Board

July 12, 2018



## Upper Santa Clara River Watershed

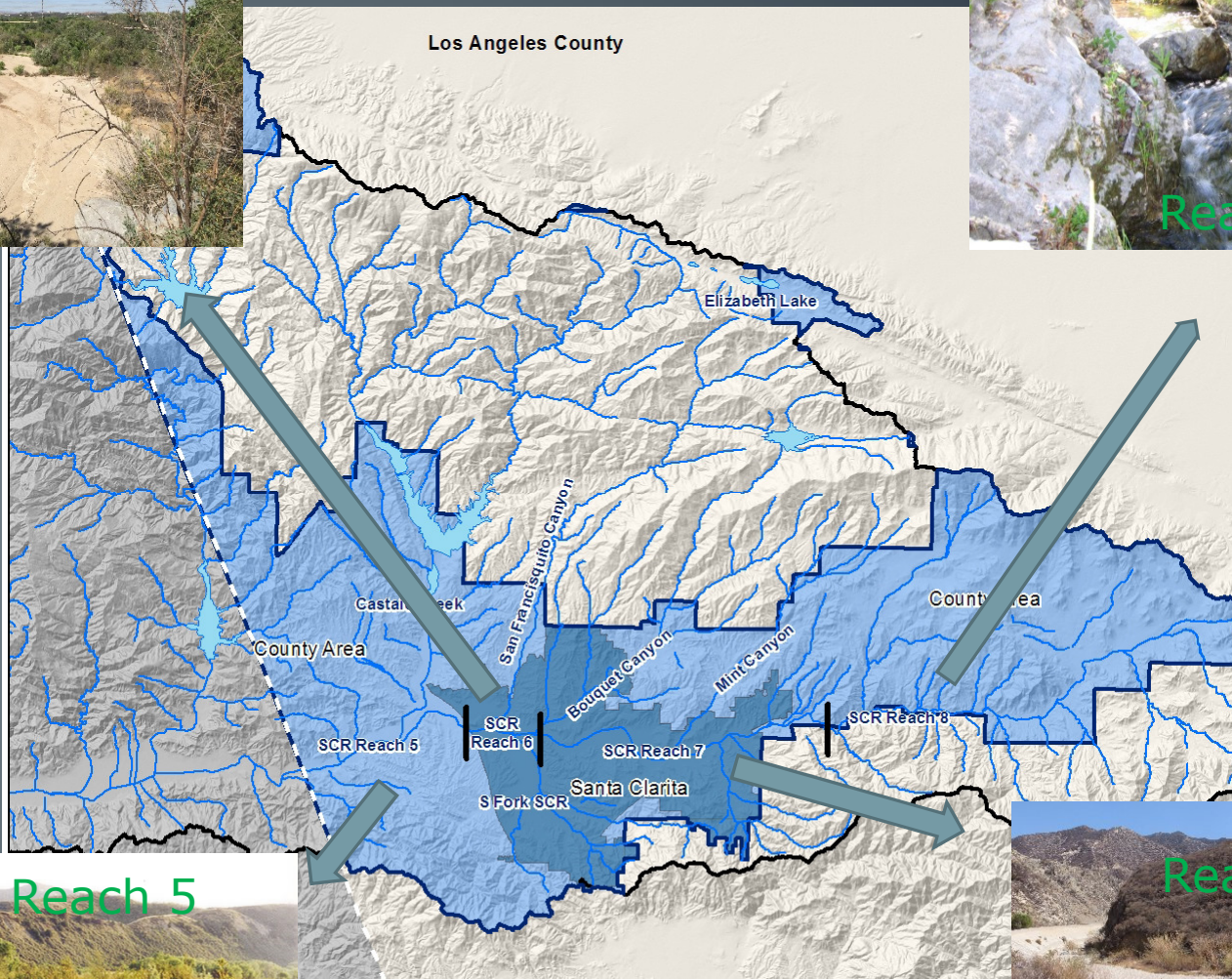


- One of the most natural rivers left in southern California
- Total Upper Watershed over 262,000 acres - EWMP Area over 121,000 acres
- 90% open, undeveloped land
- Nearly half of the Santa Clarita Valley's water supply travels through the Santa Clara River
- 14 endangered bird species, six endangered plant species, 57 archeological sites and 12 historical landmarks





# Typical View Santa Clara River Reaches





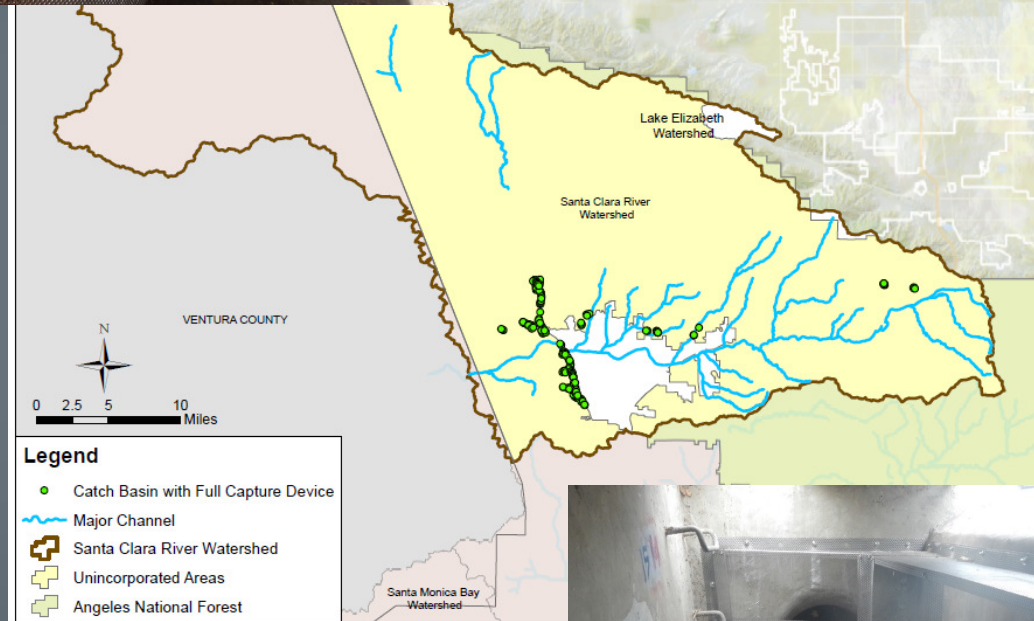
## Full Capture Devices Retrofitted in USCRW

- Installed in Phases
- Devices Installed in Catch Basins between 2013-2015
- 255 in County Unincorp.
- 87 in City limits



### Catch Basins with Full Capture Device in Santa Clara River Watershed

Date: December 5, 2107





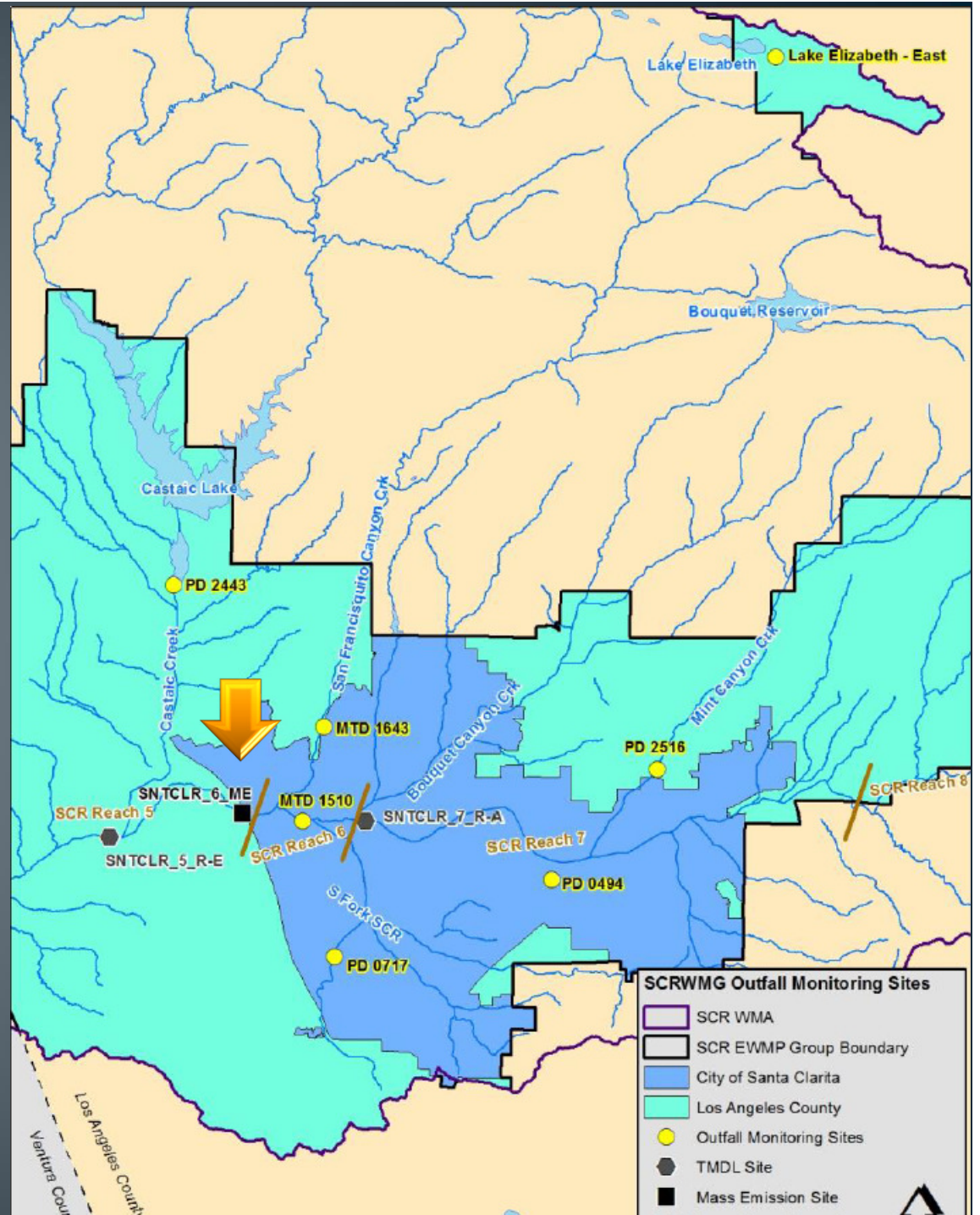
# Coordinated Integrated Monitoring Program

- Coordination partners
  - MOU
    - City of Santa Clarita
    - Los Angeles County
  - Contract – Tetra Tech
  - Other partners
    - Newhall Land and Farming/Five Points
    - Los Angeles County Sanitation District



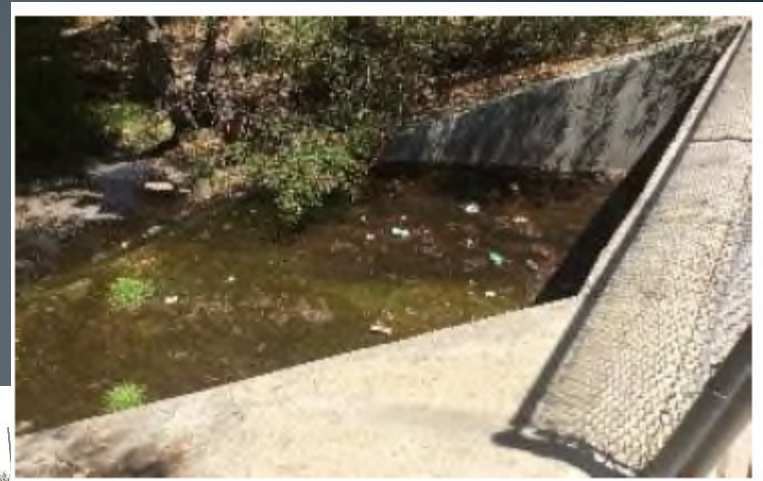
# Coordinated Integrated Monitoring Program

- Three receiving water sites
- Seven outfall locations





# MTD 1510 Source Identification





## LID Ordinance

- Redevelopment & New Development
- County Introduced in 2009/Revised 2012
- City General Plan 2011/ Ordinance 2015





- **Since 2014 distributed 3,000 dog bone bag dispensers**
- **River Rally – September 2017 participation 1,238 volunteers**
- **Enviroscape presentation – school environmental events and City Hall tours**
- **Discovery Cube participation - 665 6<sup>th</sup> graders**





# Current Calculated Infiltration Capacity at least 19 acre feet





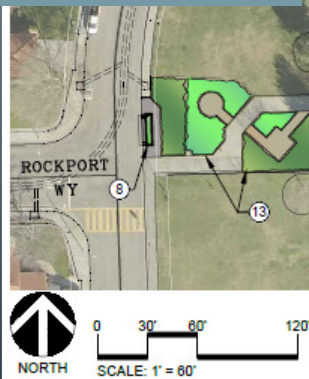


## County of Los Angeles Hasley Canyon Park

- Above & Below Ground Regional BMP
- Estimated 5.09 ac-ft capacity per 85<sup>th</sup> percentile storm
- Multi benefit (groundwater, flood control, park function)
- Estimated cost \$10 million



- LEGEND:**
- ① BELOW GRADE DIVERSION STRUCTURE
  - ② BELOW GRADE TRASH BAFFLE FILTER BOX
  - ③ BELOW GRADE STORAGE CISTERN
  - ④ BELOW GRADE INFILTRATION GALLERIES
  - ⑤ FILTRATION, AERATION, AND MECHANICAL EQUIPMENT
  - ⑥ SERVICE VEHICLE PATH OF ACCESS
  - ⑦ CONNECTION TO IRRIGATION SYSTEM
  - ⑧ PARKWAY BIOSWALE
  - ⑨ DECOMPOSED GRANITE PATHWAY
  - ⑩ FITNESS STATION (6 TOTAL)
  - ⑪ BENCH (3 TOTAL)
  - ⑫ PICNIC SHELTER WITH 2 PICNIC TABLES AND TRASH RECEPTACLES
  - ⑬ DROUGHT TOLERANT PLANTS DEMONSTRATION GARDEN



**Hasley Canyon Park**  
Castaic  
**Conceptual Plan**

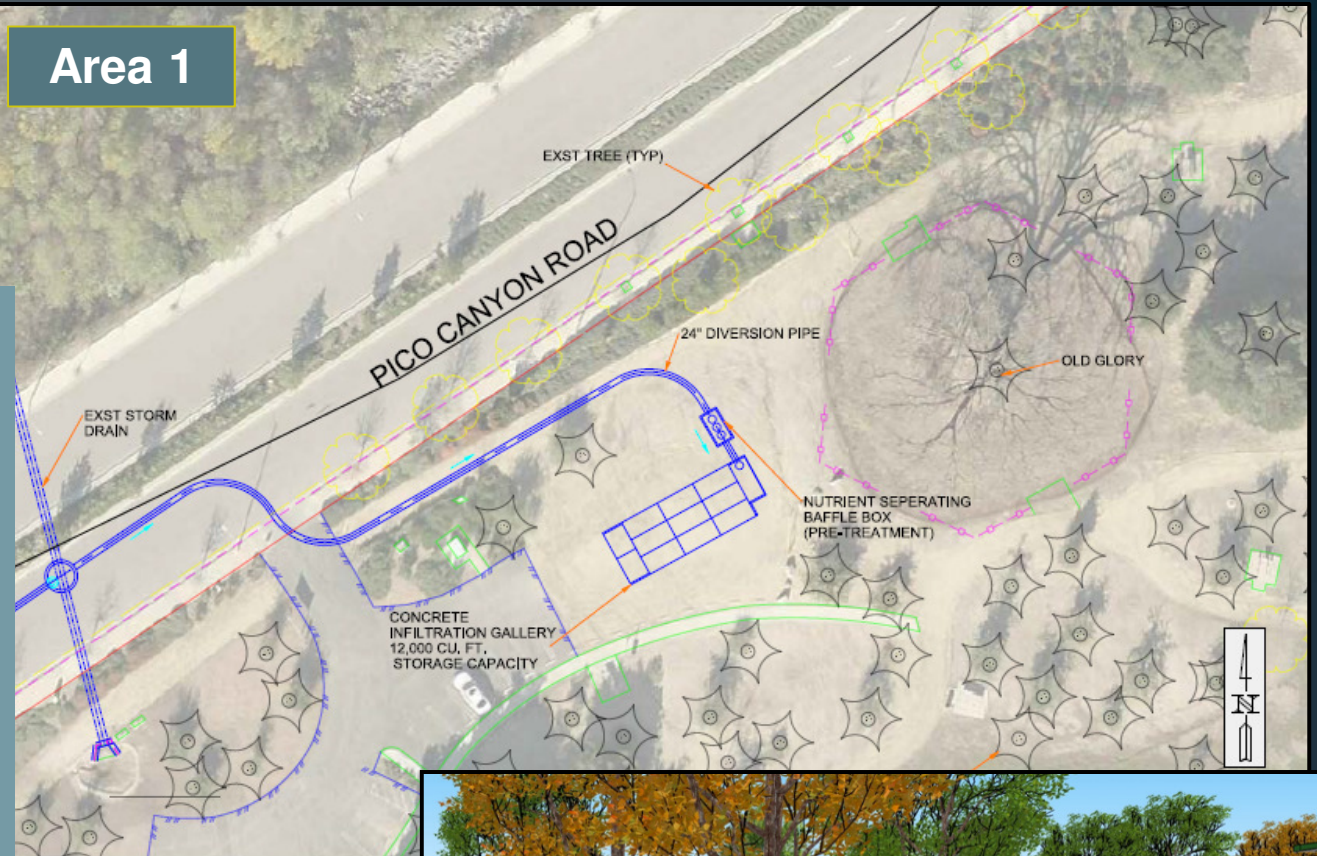
**DPW**  
LANDSCAPE ARCHITECTURE



## Area 1

### County of Los Angeles Pico Canyon Park

- Above & Below Ground Regional BMP
- Estimated 0.6 ac-ft capacity per 85<sup>th</sup> percentile storm
- Multi benefit (groundwater, flood control, park function)
- Estimated cost \$3.5 million



Example Bioinfiltration Area



## County of Los Angeles Jake Kuredjian Park

- Above & Below Ground Regional BMP
- Estimated 8 ac-ft capacity per 85<sup>th</sup> percentile storm
- Multi benefit (groundwater, flood control, park function)
- Estimated cost \$8.5 million







## Canyon Country Community Center

- Underground regional BMP
- Estimated 7.5 acre-foot capacity per 85<sup>th</sup> percentile storm
- Multi benefit (groundwater, flood control, park function)
- Estimate \$3-5 million



City of  
**SANTA CLARITA**



**CANYON COUNTRY COMMUNITY CENTER**  
COMMUNITY ENGAGEMENT PROJECT  
2015





## SCR Site

- Underground regional BMP
- Estimated 18 acre-foot capacity per 85<sup>th</sup> percentile storm
- Multi benefit (groundwater, public education, new park)
- Estimate \$10 million





## Newhall Park

- Underground regional BMP
- Estimated 9 to 33 acre-foot capacity per 85<sup>th</sup> percentile storm
- Multi benefit (groundwater, flood control, park function)
- Estimate \$10 million





## Santa Clarita Park

- Estimated 7.7 to 20 acre-foot capacity per 85<sup>th</sup> percentile storm
- Multi benefit (groundwater, public education, new park)
- Estimate \$10 million





## Valencia Glen Park

- Wetland basin
- Estimated 2.8 to 7.6 acre-foot capacity per 85<sup>th</sup> percentile storm
- Multi benefit (groundwater, public education, new park)





# Upper Santa Clara River Group







**Lead Agency**

**City of Santa Clarita**

**Environmental Services  
Division**

**Neighborhood Services  
Department**

**Heather Merenda**

**661-286-4098**

**[hmerenda@santa-clarita.com](mailto:hmerenda@santa-clarita.com)**