

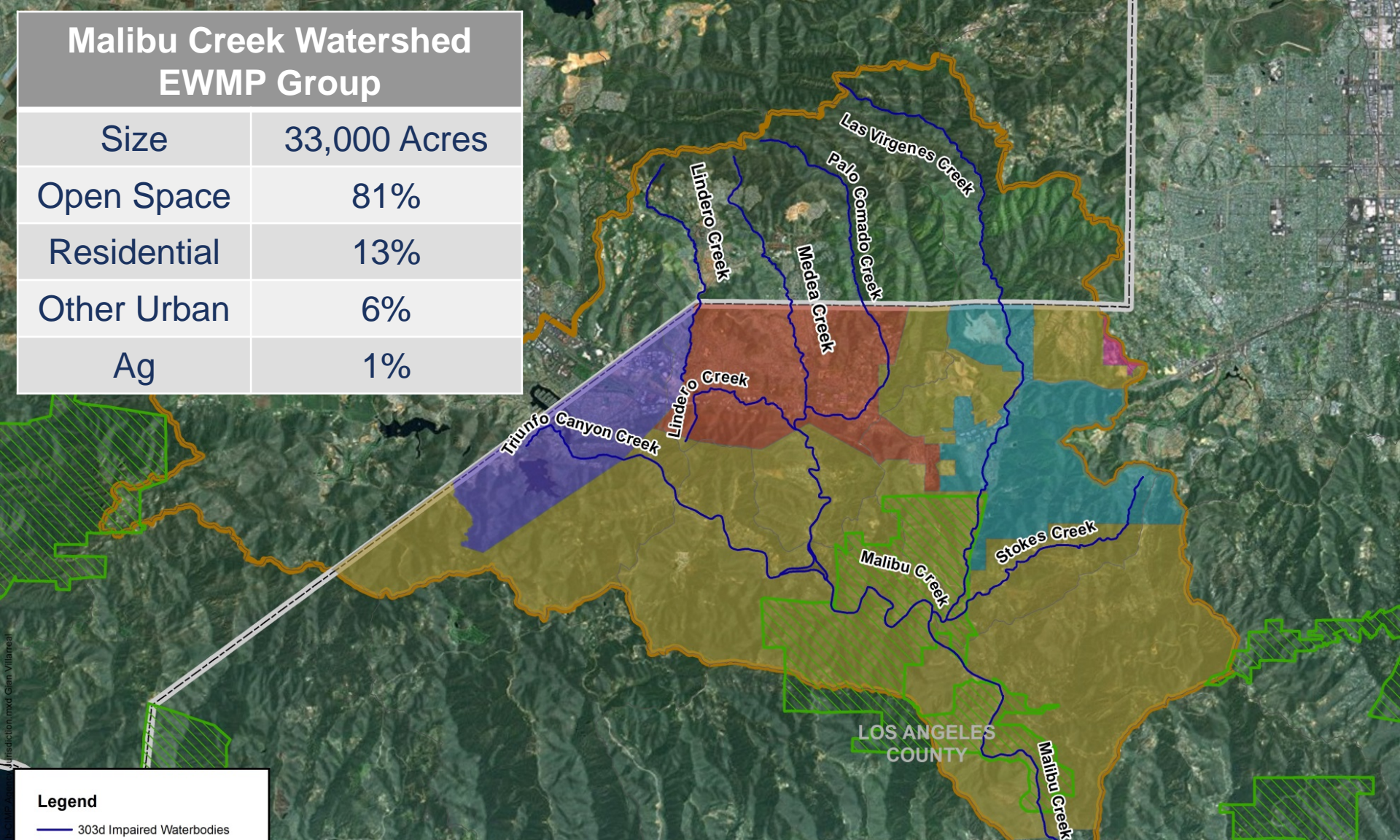


Malibu Creek Watershed Permit Implementation Update

July 12, 2018

Malibu Creek Watershed EWMP Group

Size	33,000 Acres
Open Space	81%
Residential	13%
Other Urban	6%
Ag	1%



Legend

- 303d Impaired Waterbodies
- State Park or Forest Boundary
- CIMP Agencies**
- Agoura Hills
- Calabasas
- Hidden Hills
- Unincorporated
- Westlake Village
- County Boundary

Malibu Creek Watershed EWMP Group



Aspects of Our Approach

- Minimum Control Measures
- Low Impact Development
- Green Streets
- Regional Projects
- Trash Capture Devices
- Creek Restoration



Key Minimum Control Measures

- Targeted Ordinances
 - Water Conservation
 - Food Packing
 - Mobile Commercial Washing Operations
- Utilization of Smart Irrigation
- Community Engagement and Participation

Community Engagement and Participation: Public Outreach

- Project Signage (purpose of the project, etc.)
- Ribbon Cutting Ceremonies
- Public Forums: Projects, Habitat and Your Home
- Targeted Public Outreach:
 - K-5 Environmental Defenders
 - 8-12 Generation Earth
- Annual Earth Day Events

Community Engagement and Participation: Watershed Clean Ups



Community Engagement and Participation: Hazardous Waste

- 60 events
Countywide
- 4.4 million pounds
- 59,000 pounds in
Agoura Hills event



LID: Westlake Private Detention



LID: Westlake Private Detention



Green Streets: Agoura Road Sidewalk



Quick Facts

Approach

Sidewalk Pervious
Pavers

Completed

2016

Pollutants: Bacteria, Sediment, and
Nutrients

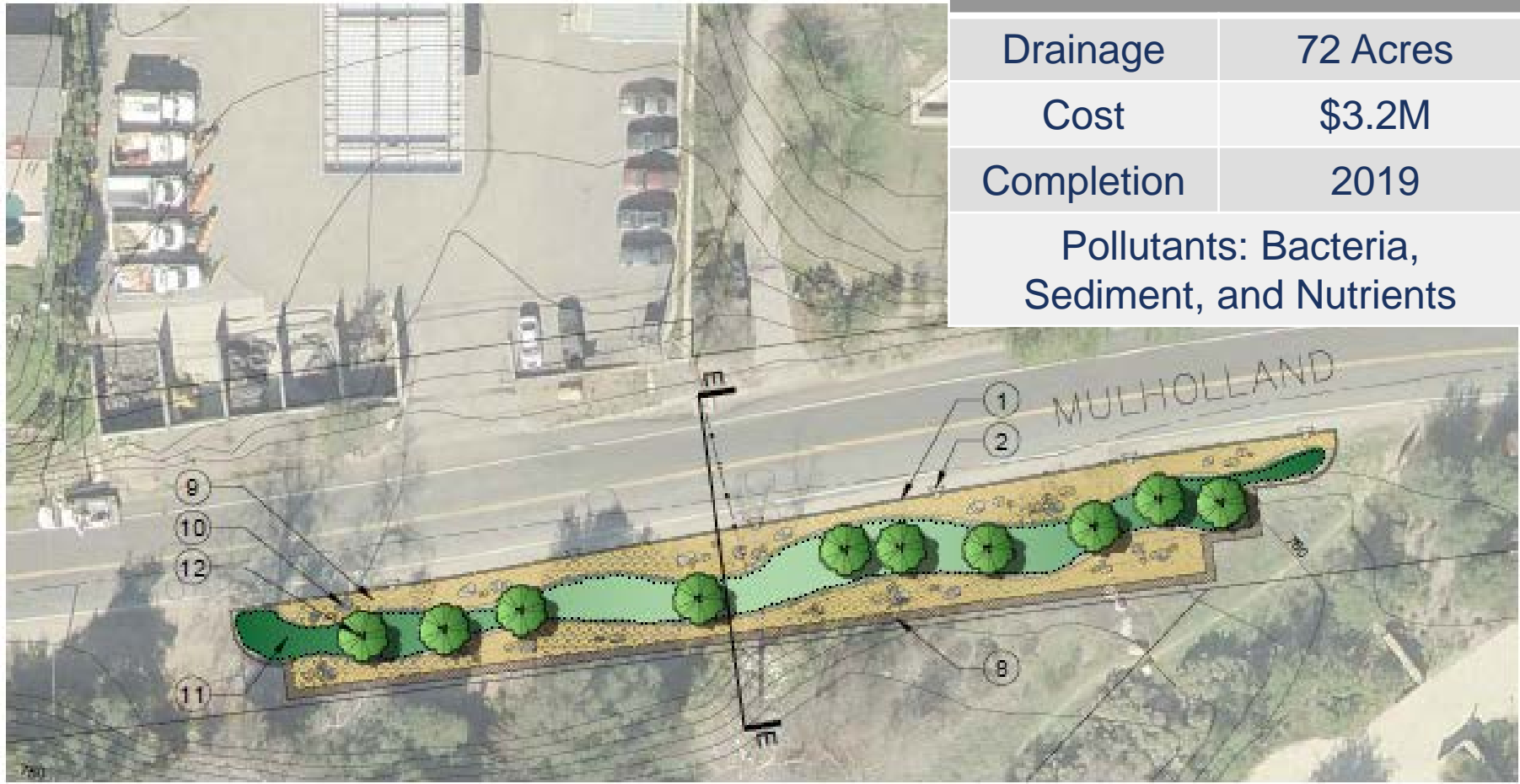
Green Streets: Malibu Hills Road

Quick Facts

Approach	Median Redesign
Phase I	2017
Phase II	2019
Pollutants: Bacteria, Sediment, Nutrients, and Trash	



Green Streets: Mulholland Highway



Quick Facts

Drainage	72 Acres
Cost	\$3.2M
Completion	2019

Pollutants: Bacteria,
Sediment, and Nutrients

Regional:



Quick Facts

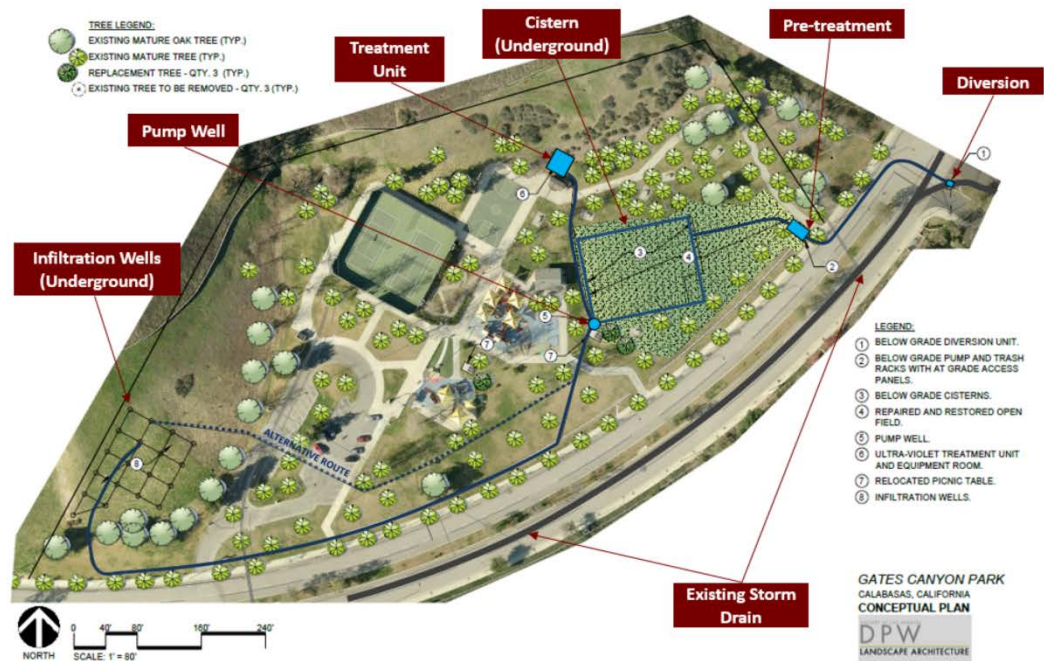
Design Volume: 3.5 Acre Feet

Cost: \$11M

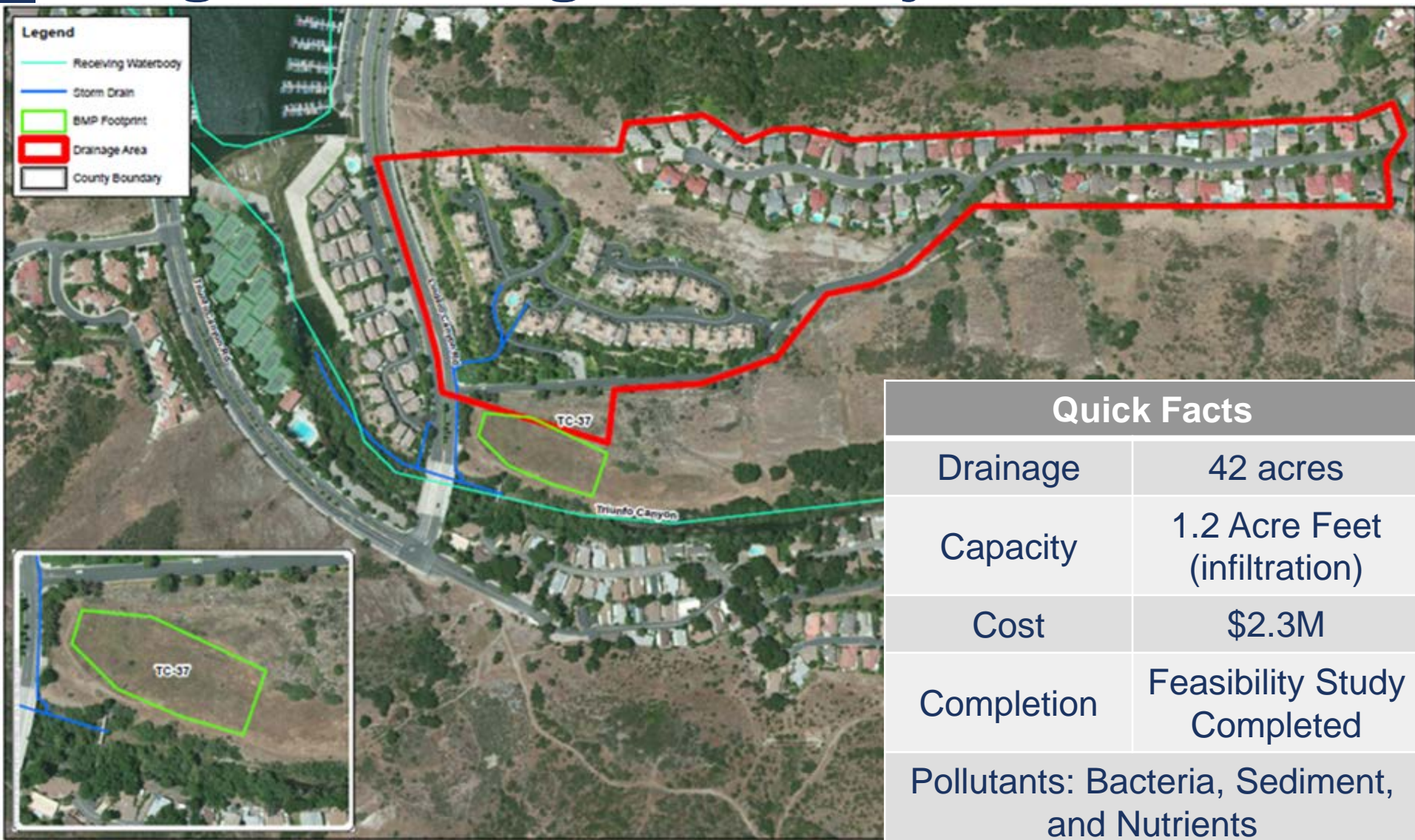
Funding: Local + Grant

Completion: 2019

Benefits: Water Quality and Supply, Flood Control, Recreation, Educational



Regional: Ridgford Project



Restoration: Las Virgenes Creek





Quick Facts

Restored native habitat

Protected fish passage

Phase I:	2008 \$1.8M
----------	----------------

Phase II:	2018 \$TBD
-----------	---------------

Restoration: Medea Creek



Quick Facts

Removed concrete and used
natural channel stabilization

Incorporated native vegetation

Completed in 2016 for \$2M



Closing

- Thank you for the opportunity to present our progress
- Look forward to continued collaboration with the Regional Board and Stakeholders

