

## **Attachment A**

### **Site Photos from Recent Site Inspection of the Willits Bypass Mitigation Lands**

Photos from May 5, 2017



Photo taken on 5/5 – Standing just northeast of the Watson 037-221-30 parcel facing southwest. Ponding seen within bermed area, highlighted in yellow.



Photo taken on 5/5 - Standing on berm facing northeast. Lower edge of the berm highlighted in yellow.

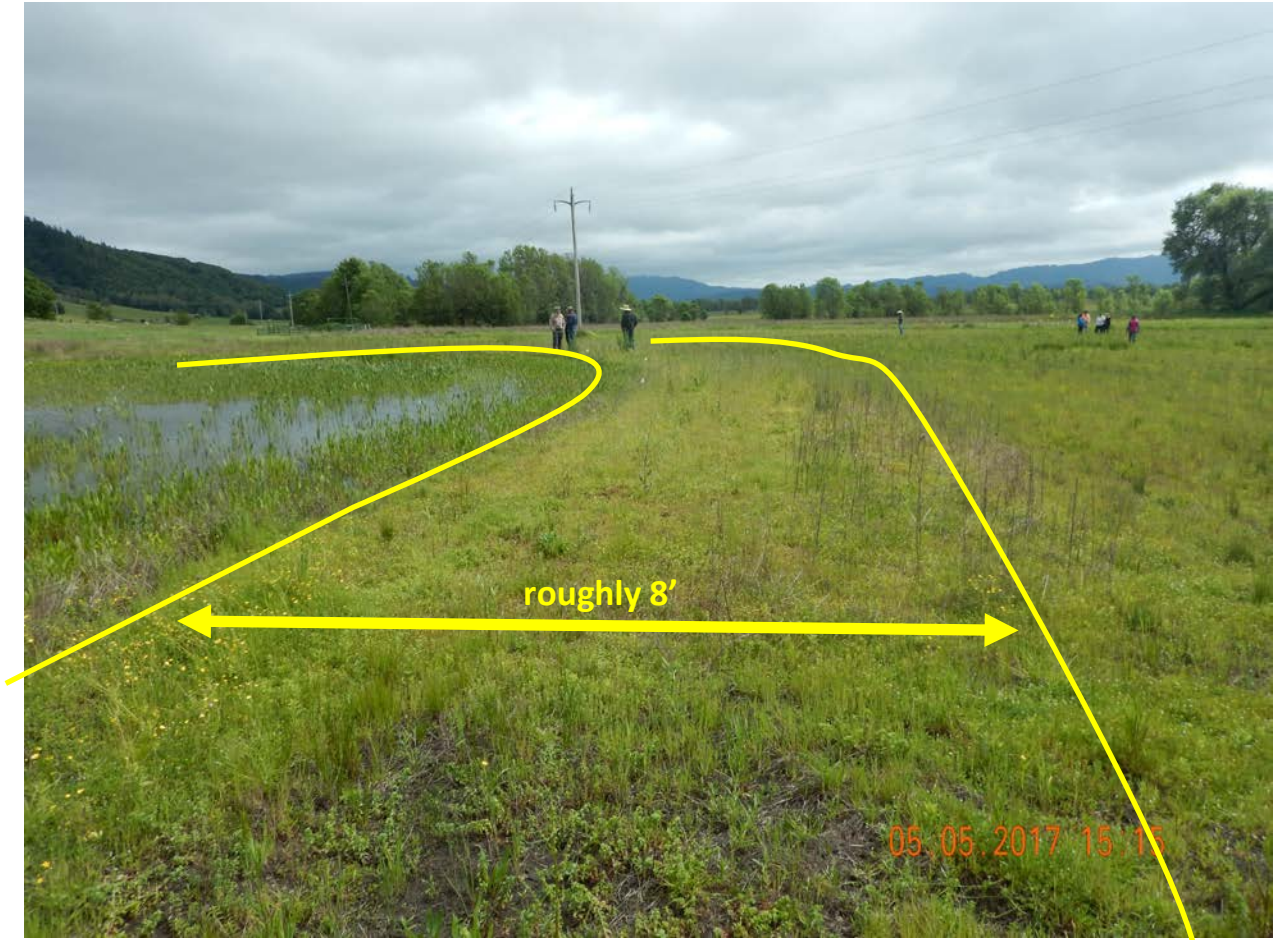


Photo taken on 5/5 - Standing on berm facing south. Ponding seen behind berm. Berm limits highlighted in yellow.



Photo taken on 5/5 - Standing on berm facing south. Ponding seen within berm limits, highlighted in yellow.

Photos from June 29, 2017



Photo taken on 6/29 - Standing in previously inundated pond facing west. Lower limit of berm highlighted in a dotted yellow line, top of berm highlighted with a solid yellow line.



Photo taken on 6/29 - Standing on berm facing south/southwest. Berm highlighted in yellow. Ponding not present in this photo.



Photo taken on 6/29 - Standing in previously inundated pond facing southwest. Lower limit of berm highlighted in a dotted line, top of berm highlighted with a solid line.

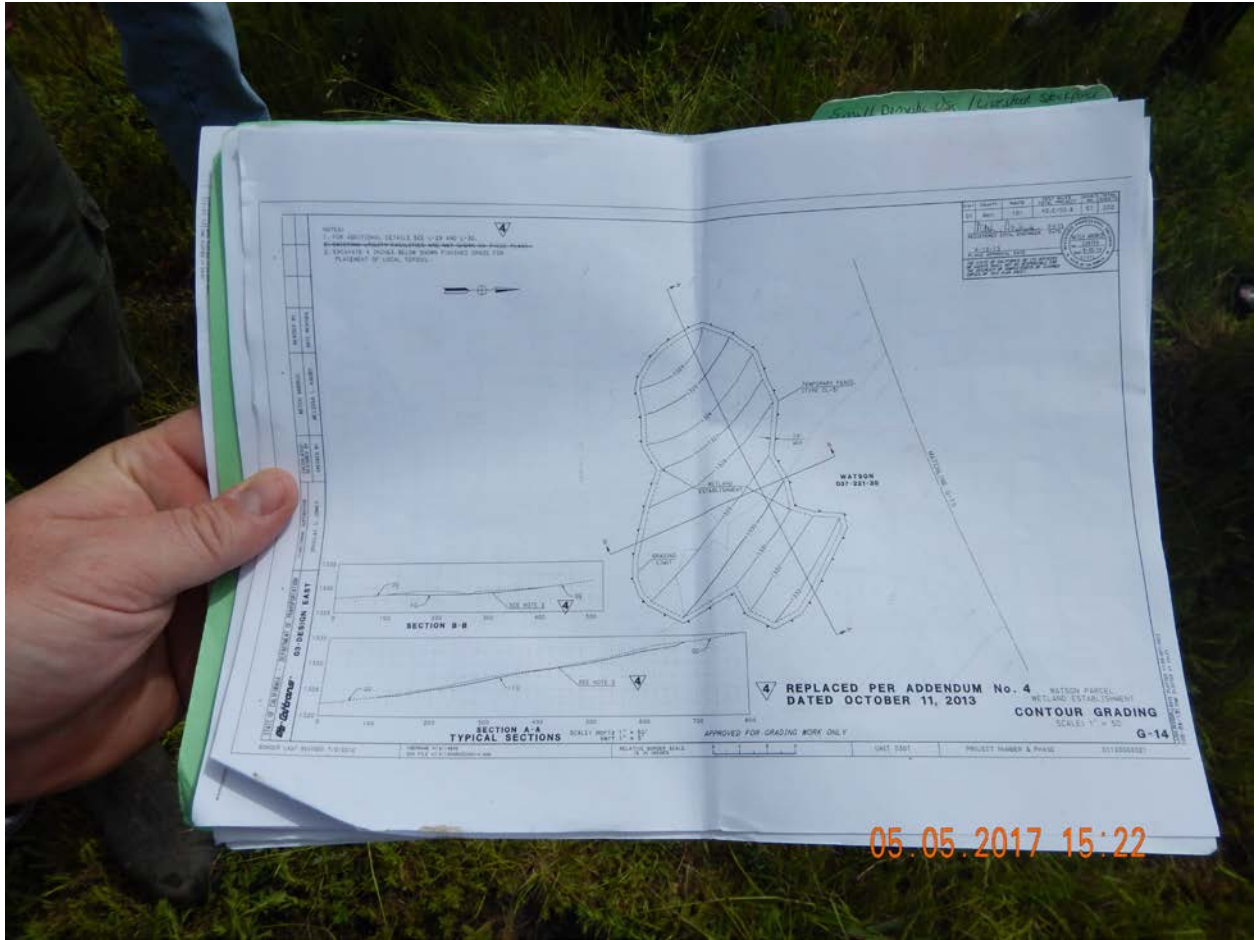


Photo taken on 5/5 - No artificial ponded feature is shown on the original MMP.