

**California Regional Water Quality Control Board
North Coast Region**

**Monitoring and Reporting Program
Order No. R1-2018-0058**

FOR THE

**CITY OF UKIAH
RECYCLED WATER PROGRAM
WDID NO. 1B14046RMEN**

MENDOCINO COUNTY

Contents

I.	General Monitoring Provisions.....	2
II.	Recycled water Monitoring Requirements.....	2
III.	Receiving Water Monitoring Requirements – Groundwater.....	3
	A. Groundwater Monitoring.....	3
IV.	Other Monitoring Requirements.....	4
	A. Recycled Water Use.....	4
	B. Industrial/Other Uses of Recycled Water	5
	C. Pond System Monitoring.....	5
V.	Reporting Requirements.....	5
	A. General Monitoring and Reporting Requirements.....	5
	B. Annual Report.....	6
	C. Non-compliance Reporting	6
	D. Recycled Water Spills.....	7

Tables

Table 1.	Recycled Water Monitoring	3
Table 2.	Recycled Water Monitoring Requirements – Monitoring Location REC-002.....	3
Table 3.	Groundwater Monitoring Requirements – Monitoring Locations RW1 through RW-5 ^{1, 2}	3
Table 4.	Recycled Water Use Area Requirements ¹	4
Table 5.	Cross-Connection and Backflow Monitoring Requirements	5
Table 6.	Pond System Monitoring Requirements.....	5

Figures and Attachments

Figure 1: Location of Ukiah WWTP and Southern Monitoring Wells

Figure 2: Location of City of Ukiah Northern Groundwater Monitoring Wells

MRP Attachment 1: Tables 5 through 9 from the July 2018 City of Ukiah Water Recycling Program Technical Report and Notice of Intent

MRP Attachment 2: General Order Attachment C: Standard Provisions and Reporting Requirements, Order WQ 2016-0068-DDW, Water Reclamation Requirements for Recycled Water Use

The City of Ukiah owns and operates a wastewater treatment plant (Facility) that produces disinfected tertiary recycled water for beneficial reuse for urban, agricultural, and industrial uses as allowed by the California Code of Regulations, Title 22, Division 4, Chapter 3. The City of Ukiah (hereafter Administrator) has applied for and received coverage for its Recycled Water Program that is subject to the Notice of Applicability (NOA) of Enrollment under Order WQ 2016-0068-DDW (hereafter General Order). The General Order delegates the responsibility of administering water recycling programs to a designated Administrator to the fullest extent possible. The City of Ukiah will act as the Administrator of the City's Recycled Water Program. The details of the enrollment are described in the NOA letter issued by the North Coast Regional Water Quality Control Board (Regional Water Board) Executive Officer on October 16, 2018

This monitoring and reporting program (MRP) replaces the MRP in the General Order and serves as a project-specific MRP to address use area specific water quality concerns. In addition, water recycling specifications and requirements, including monitoring requirements that apply to the production of recycled water, are established in Order No. R1-2018-0035, Waste Discharge Requirements (WDR) and Water Recycling Requirements (WRR) for the City of Ukiah Wastewater Treatment Plant, Mendocino County (NPDES No. CA0022888 and WDIID No. 1B8840290MEN) and the associated MRP Order No. R1-2018-0035.

This MRP describes requirements for monitoring the Administrator's recycled water system and for documenting administrative Recycled Water Program requirements of the General Order. This MRP is issued pursuant to Water Code section 13267 and establishes monitoring and reporting requirements that implement California regulations. The Administrator shall not implement any changes to this MRP unless and until a revised MRP is issued by the Regional Water Board Executive Officer or the State Water Board Executive Director. The Administrator shall implement this monitoring and reporting program.

I. GENERAL MONITORING PROVISIONS

- A. Wastewater Monitoring Provision.** Composite samples may be taken by a proportional sampling device approved by the Executive Officer or by grab samples composited in proportion to flow. In compositing grab samples, the sampling interval shall not exceed 1 hour.
- B. Supplemental Monitoring Provision.** If the Administrator monitors any pollutant more frequently than required by this Order, using test procedures approved by Title 40 of the Code of Federal Regulations (40 C.F.R.) part 136 or as specified in this Order, the results of such monitoring shall be included in the calculation and reporting of the data submitted in the monthly and annual discharge monitoring reports.
- C. Data Quality Assurance Provision.** Laboratories analyzing monitoring samples shall be certified by the State Water Resources Control Board (State Water Board), Division of Drinking Water (DDW) in accordance with the provisions of Water Code section 13176 and must include quality assurance/quality control data with their analytical reports.
- D. Sample Documentation.** All samples shall be representative of the volume and nature of the discharge or matrix of material sampled. The name of the sampler, sample type (grab or composite), time, date, location, bottle type, and any preservative used for each sample shall be recorded on the sample chain of custody form. The chain of custody form must also contain all custody information including date, time, and to whom samples were relinquished. If composite samples are collected, the basis for sampling (time or flow weighted) shall be approved by Regional Water Board staff.
- E. Instrumental and Calibration Provision.** All monitoring instruments and devices used by the Administrator to fulfill the prescribed monitoring program shall be properly maintained and calibrated as necessary to ensure their continued accuracy. All flow measurement devices shall be calibrated no less than the manufacturer's recommended intervals or one-year intervals, (whichever comes first) to ensure continued accuracy of the devices.
- F. Field test Instruments.** Field test instruments (such as those used to test pH, dissolved oxygen, and electrical conductivity) may be used provided that they are used by a California Environmental Laboratory Program (ELAP) certified laboratory or:
 - 1. The user is trained in proper use and maintenance of the instruments;
 - 2. The instruments are field calibrated prior to monitoring events at the frequency recommended by the manufacturer;
 - 3. Instruments are serviced by the manufacturer or authorized representative at the recommended frequency; and
 - 4. Field calibration reports are maintained and available for at least three years.
- G. Minimum Levels (ML) and Reporting Levels (RL).** Compliance monitoring analyses shall be conducted using detection limits that are lower than the applicable effluent limitations and/or water quality criteria. If no Minimum Level (ML) value is below these levels, the lowest ML shall be selected as the Reporting Level (RL).
- H. Duplicative Monitoring Requirements.** If monitoring requirements listed below duplicate existing monitoring requirements under other orders including WDRs or waivers of WDRs, then duplication of sampling and monitoring activities are not required if the monitoring activity satisfies the requirements of this MRP. In addition to submitting the results under another order, the results shall be submitted in the reports required by the General Order and this MRP.
- I. Approved Test Methods.** All monitoring must be conducted using approved test methods or other test methods specified in this MRP.
- J. Sampling Method.** Collecting composite samples is acceptable in most cases. Due to short holding times, bacteriological samples collected to verify disinfection effectiveness must be grab samples.

II. RECYCLED WATER MONITORING REQUIREMENTS

- A.** MRP No. R1-2018-0035 establishes Monitoring Location REC-001 as the location for monitoring the production of recycled water from the Facility. REC-001 samples are collected at a point following disinfection but prior to discharge to a 66-million gallon (MG) recycled water storage pond operated and maintained by the Administrator. This MRP establishes Monitoring Location REC-002 as the location for monitoring the quality of the recycled water distributed to recycled water users. REC-002 samples are to be collected at a location where a representative sample of recycled water to be distributed can be collected following all treatment and storage in the 66-MG recycled water storage pond and immediately before the distribution system.
- B. Monitoring Locations REC-001 and INT-001B.** The Administrator currently monitors disinfected tertiary effluent that will be recycled prior to discharge to the 66-MG recycled water storage pond at Monitoring Locations INT-001B and REC-001 and submits monitoring results pursuant to reporting requirements established in WDR Order No. R1-2018-0035, as detailed in Table 1 below. All monitoring requirements identified in Table 1 are reported to the Regional Water Board under WDR and MRP Order No. R1-2018-0035. Total coliform, turbidity, and CT (contact time) monitoring data shall also be submitted with the annual report required by this MRP (Order No. R1-2018-0058). In addition, the Administrator is required to conduct monitoring at location REC-002 as detailed in Recycled Water Monitoring Provision II.C of this MRP.

Table 1. Recycled Water Monitoring

Parameter	Units	Sample Type	Minimum Sampling Frequency	Required Analytical Test Method ²
Recycled Water Flow ³	mgd	Meter	Continuous	--
Biochemical Oxygen Demand 5-day @ 20°C (BOD ₅)	mg/L	Grab	Weekly	Standard Methods
Total Suspended Solids (TSS)	mg/L	Grab	Weekly	Standard Methods
pH	s.u.	Grab	Weekly	Standard Methods
Total Coliform Bacteria	MPN/100 mL	Grab	Daily	Standard Methods
Chlorine, Total Residual	mg/L	Meter	Continuous	Standard Methods
CT (Contact Time) ⁴	mg-min/L	Calculation	Continuous	---
Modal Contact Time	minutes	Calculation	Continuous	---
Turbidity	NTU	Meter	Continuous	---

Table Notes:

- Recycled water monitoring occurs at REC-001, with the exception of turbidity which is monitored at INT-001B. These monitoring locations are defined in WDR Order No. R1-2018-0035 as:
 - REC-001: Treated wastewater following advanced wastewater treatment disinfection but prior to discharge to the recycled water storage pond.
 - INT-001B: Treated wastewater immediately following the advanced wastewater treatment process and prior to the chlorine contact basins. This monitoring locations is used for continuous monitoring of turbidity.
- In accordance with the current edition of *Standard Methods for Examination of Water and Wastewater* (American Public Health Administration) or current test procedures specified in 40 C.F.R. part 136.
- Each month, the Administrator shall report the daily average and monthly average recycled water flows to the 66 MG recycled water storage pond.
- The product of chlorine residual and modal contact time.

- C. **Monitoring Location REC-002.** The Administrator shall monitor disinfected tertiary recycled water that will be recycled after storage in the 66-MG recycled water storage pond and prior to distribution at Monitoring Location REC-002 as follows:

Table 2. Recycled Water Monitoring Requirements – Monitoring Location REC-002

Parameter	Units	Sample Type	Minimum Sampling Frequency	Required Analytical Test Method ¹
Recycled Water Flow ²	mgd	Meter	Continuous	--
Nitrate Nitrogen (as N)	mg/L	Grab	Monthly	Standard Methods
Nitrite Nitrogen (as N)	mg/L	Grab	Monthly	Standard Methods
Total Kjeldahl Nitrogen (as N)	mg/L	Grab	Monthly	Standard Methods
Total Nitrogen (as N) ³	mg/L	Calculation	Monthly	Standard Methods
Total Dissolved Solids	mg/L	Grab	Monthly	Standard Methods
Sodium	mg/L	Grab	Monthly	Standard Methods
Chloride	mg/L	Grab	Monthly	Standard Methods
Boron	mg/L	Grab	Monthly	Standard Methods

Table Notes:

- In accordance with the current edition of *Standard Methods for Examination of Water and Wastewater* (American Public Health Administration) or current test procedures specified in 40 C.F.R. part 136.
- Each month, the Administrator shall report the daily average and monthly average recycled water flows from the 66 MG recycled water storage pond to the recycled water distribution system.
- The Administrator shall calculate and report Total Nitrogen as the sum of nitrate-nitrogen, nitrite-nitrogen, and Total Kjeldahl nitrogen.

III. RECEIVING WATER MONITORING REQUIREMENTS – GROUNDWATER

A. Groundwater Monitoring

- The Administrator shall monitor groundwater at approved groundwater monitoring locations as shown in Figures 1 and 2 to this MRP as follows:

Table 3. Groundwater Monitoring Requirements – Monitoring Locations RW1 through RW-5^{1,2}

Parameter	Units	Sample Type	Minimum Sampling Frequency	Required Analytical Test Method ³
Depth to Groundwater	0.01 feet	Measurement	Quarterly ⁴	--
Groundwater Elevation	0.01 feet MSL	Measurement	Quarterly ⁴	--
pH	standard units	Measurement	Quarterly ⁴	Standard Methods
Conductivity	µmhos/cm	Measurement	Quarterly ⁴	Standard Methods
Dissolved Oxygen	mg/L	Measurement	Quarterly ⁴	Standard Methods
Oxidation Reduction Potential (ORP)	millivolts	Measurement	Quarterly ⁴	Standard Methods
Temperature	°C or °F	Measurement	Quarterly ⁴	Standard Methods
Nitrate (as N)	mg/L	Grab	Quarterly ⁴	Standard Methods
Total Kjeldahl Nitrogen (as N) ⁵	mg/L	Grab	Quarterly ⁴	Standard Methods
Nitrite (as N)	mg/L	Grab	Quarterly ⁴	Standard Methods
Nitrogen, Total (as N)	mg/L	Calculation	Quarterly ⁴	Standard Methods
Total Dissolved Solids	mg/L	Grab	Quarterly ⁴	Standard Methods

Parameter	Units	Sample Type	Minimum Sampling Frequency	Required Analytical Test Method ³
Chloride	mg/L	Grab	Quarterly ⁴	Standard Methods
Boron	mg/L	Grab	Quarterly ⁴	Standard Methods
Sodium	mg/L	Grab	Quarterly ⁴	Standard Methods
Total Trihalomethanes ⁶	µg/L	Grab	Semi-Annually ⁷	Standard Methods

Table Notes:

1. Groundwater monitoring wells are identified as RW (recycled water) to differentiate them from the groundwater monitoring wells identified in WDR Order No. R1-2018-0035 as GW which are used to monitor for impacts from the City's percolation ponds.
2. Pre-project groundwater monitoring shall be conducted at RW3 through RW5 and post-project monitoring shall be conducted at RW1 through RW5 in accordance with the June 2018 City of Ukiah Groundwater Monitoring Plan.
3. In accordance with the current edition of *Standard Methods for Examination of Water and Wastewater* (American Public Health Administration) or current test procedures specified in 40 C.F.R. part 136.
4. The June 2018 City of Ukiah Groundwater Monitoring Plan identifies the quarterly monitoring months as February, May, July, and October with pre-project monitoring to begin in July 2018 and post-project monitoring to begin in July 2019.
5. The Administrator shall calculate and report Total Nitrogen as the sum of nitrate-nitrogen, nitrite-nitrogen, and Total Kjeldahl nitrogen.
6. The sum of bromoform, chlorodibromomethane, chloroform, and dichlorobromomethane.
7. Semi-annual monitoring for total trihalomethanes shall be conducted at monitoring wells RW2 and RW5 in May and October each year. This monitoring requirement will be re-evaluated after two years of monitoring data is available and may be reduced or eliminated if monitoring results demonstrate that trihalomethanes are not impacting groundwater.

2. By October 1, 2021, the Discharger shall submit for Regional Water Board Executive Officer review, a groundwater characterization technical report that presents, at a minimum, a summary of all pre-project and post-project groundwater monitoring data and an analysis of that data to evaluate whether or not there is evidence that recycled water application is impacting groundwater. The analysis should include a comparison of groundwater data to recycled water quality data and provide statistical analysis, including trend and other appropriate analysis. Based on the results of this report, the Regional Water Board Executive Officer may modify the groundwater monitoring requirements. Monitoring requirements may be reduced or eliminated if groundwater monitoring demonstrates no impact to groundwater. Monitoring may be increased or modified, if needed, to gather any additional data that is determined necessary to properly evaluate the impact of recycled water use on groundwater.

IV. OTHER MONITORING REQUIREMENTS

A. Recycled Water Use

1. The Administrator shall monitor use area(s) at a frequency appropriate to determine compliance with the General Order and the Administrator's Recycled Water Use Program requirements. The Administrator may assign monitoring responsibilities to a recycled water user as part of the Water Recycling Use Permit program; however, the Administrator retains responsibility to ensure the data is collected, as well as prepare and submit the annual report.
2. The following shall be recorded for each recycled water user with additional reporting for use areas as appropriate. The frequency of use area inspections shall be based on the complexity and risk of each use area. Use areas may be aggregated to combine acreage for calculation or observation purposes. Use area monitoring shall include the following parameters:

Table 4. Recycled Water Use Area Requirements¹

Parameter	Units	Sample Type	Minimum Sampling/Observation Frequency ²
Recycled Water User	---	---	---
Recycled Water Flow ³	gpd ⁴	Meter ⁵	Monthly
Acreage Applied ⁶	Acres	Calculated	Monthly
Application Rate (hydraulic)	Inches/acre/year	Calculated	Monthly
Total Nitrogen Application Rate ^{7,8}	Lbs/acre/month	Calculated	Monthly
Soil Saturation/Ponding	---	Observation	Monthly
Runoff	---	Observation	Monthly
Nuisance Odors/Vectors	---	Observation	Monthly
Leaks or breaks in equipment	---	Observation	Monthly
Notification Signs ⁹	---	Observation	Monthly
Rainfall	Inches	Gage	Daily
ETo/ETc ¹⁰	Inches	Gage/Calculation	Daily
Maximum Allowable Hydraulic Agronomic Rate ¹¹	Inches	Calculation	Annually

Parameter	Units	Sample Type	Minimum Sampling/ Observation Frequency ²
<p>Table Notes:</p> <ol style="list-style-type: none"> Recycled water production and use area monitoring shall be reported with the annual report (section V.B of this MRP). Non-compliance incidents shall be reported as specified in section V.C of this MRP. Or less frequently if approved by the Regional Water Board Executive Officer. Recycled water flow shall not include other potable or non-potable “make-up” water used in conjunction with recycled water. If potable or non-potable “make-up” water is used to supplement recycled water use, this shall be reported in the annual report as a component of the hydraulic application rate. The combination of recycled water use and supplemental water use shall not exceed the hydraulic agronomic rate for each use type. gpd denotes gallons per day Meter requires meter reading, a pump run time meter, or other approved method of flow monitoring. Acreage applied denotes the acreage to which recycled water is applied. Nitrogen application rate shall consider nitrogen content of recycled water at REC-002. Nitrogen concentrations shall be calculated and reported “as N”. For example, nitrate-nitrogen = 27 mg/l as NO₃ shall be converted and reported as nitrate-nitrogen = 6.1 mg/L as N using a conversion factor of 14.067 (N)/62.0049 (NO₃). Notification signs shall be consistent with the requirements of title 22. ET_o is the reference evapotranspiration from the nearest operating California Irrigation Management Information System (CIMIS) station. ET_c is the amount of full potential water use by a crop and is calculated as ET_o times a crop coefficient that accounts for the amount of sun interception and is specific to each use type (vineyard, pasture, pear orchard). The crop coefficient increases with canopy growth. The crop coefficients for each irrigation use type are included in Tables 6 through 9 of the Administrator’s July 23, 2018 NOI. Maximum allowable hydraulic agronomic rates for each recycled water use type will be calculated using real-time ET_o, precipitation, and crop coefficients that are specific to the crop type as described in the Administrator’s NOI, Irrigation Operations and Management Plan, including Tables 5 through 9, that is included in the July 23, 2018, NOI. Agronomic rate (feet)= (ET_o (inches) x crop coefficient – precipitation (inches)) x irrigation efficiency x 1 inch/12 feet. Tables 5 through 9 of the NOI are included as Attachment 1 to this MRP. 			

B. Industrial/Other Uses of Recycled Water

- The potential for cross-connections and backflow prevention devices shall be monitored at use sites where cross-connection or backflow incident potential exist, as listed, below, or more frequently if specified by DDW.

Table 5. Cross-Connection and Backflow Monitoring Requirements

Requirement	Sampling Frequency	Reporting Frequency
Cross-connection testing	Four Years ¹	30 days/Annually ²
Backflow Incident	Continuous	24 hours from discovery
Backflow Prevention Device Testing and Maintenance	Annually ³	Annually

Table Notes:

- Testing shall be performed at least every four years, or more frequently at the discretion of DDW.
- Cross-connection testing shall be reported pursuant to title 22 section 60314. The report shall be submitted to DDW within 30 days and included in the annual report to the Regional Water Board.
- Backflow prevention device maintenance shall be tested by a qualified person as described in title 17, section 7605.

C. Pond System Monitoring

- The Administrator’s 66-MG recycled water storage pond and all off-site recycled water storage ponds permitted through the Administrator’s Recycled Water Program shall be monitored as follows:

Table 6. Pond System Monitoring Requirements

Parameter	Units	Sample Type	Minimum Sampling Frequency	Reporting Frequency
Freeboard	0.1 feet	Measurement	Quarterly	Annually
Odors	--	Observation	Quarterly	Annually
Berm Condition	--	Observation	Quarterly	Annually

V. REPORTING REQUIREMENTS

A. General Monitoring and Reporting Requirements

- Standard Provision and Reporting Requirements.** The Administrator shall comply with all Standard Provisions and Reporting Requirements (Attachment C to the General Order) related to monitoring, reporting, and recordkeeping. General Order Attachment C is attached to this MRP.
- Electronic Reporting.** The Administrator shall submit electronic Self-Monitoring Reports (eSMRs) using the State Water Board’s California Integrated Water Quality System (CIWQS) Program Web site (<http://www.waterboards.ca.gov/ciwqs/index.html>). The CIWQS Web site will provide additional directions for SMR submittal in the event there will be service interruption for electronic submittal. The Administrator shall maintain sufficient staffing and resources to ensure it submits eSMRs that are complete and timely. This includes provision of training and supervision of individuals (e.g., Administrator’s personnel or consultant) on how to prepare and submit eSMRs.

The Administrator shall also submit all groundwater monitoring data to the State Water Board’s Geographic Environmental Information Management System database (GeoTracker) at http://www.waterboards.ca.gov/ust/electronic_submittal/index.shtml.

In the event that an alternate method for submittal of electronic self-monitoring reports is required, the Administrator shall submit electronically via email to NorthCoast@waterboards.ca.gov or on disk (CD or DVD) in Portable Document Format (PDF) file in lieu of paper-sourced documents. The guidelines for electronic submittal of documents can be found on the Regional Water Board website at <http://waterboards.ca.gov/northcoast>.

3. **Complete Reporting.** All monitoring results reported shall be supported by the inclusion of the complete analytical report from the laboratory that conducted the analyses.
4. **Reporting Protocols.** The Administrator shall report with each sample result the applicable ML, the RL, and the current Method Detection Limit (MDL), as determined by the procedure in 40 C.F.R. part 136.

The Administrator shall report the results of analytical determinations for the presence of chemical constituents in a sample using the following reporting protocols:

- a. Sample results greater than or equal to the reported ML shall be reported as measured by the laboratory (i.e., the measured chemical concentration in the sample).
- b. Sample results less than the reported ML, but greater than or equal to the laboratory's MDL, shall be reported as "Detected, but Not Quantified," or DNQ. The estimated chemical concentration of the sample shall also be reported.

For the purposes of data collection, the laboratory shall write the estimated chemical concentration next to DNQ as well as the words "Estimated Concentration" (may be shortened to "Est. Conc."). The laboratory may, if such information is available, include numerical estimates of the data quality for the reported result. Numerical estimates of data quality may be percent accuracy (\pm a percentage of the reported value), numerical ranges (low to high), or any other means considered appropriate by the laboratory.
- c. Sample results less than the laboratory's MDL shall be reported as "Not Detected," or ND.
- d. The Administrator is to instruct laboratories to establish calibration standards so that the ML value (or its equivalent if there is differential treatment of samples relative to calibration standards) is the lowest calibration standard. At no time is the Administrator to use analytical data derived from extrapolation beyond the lowest point of the calibration curve.

B. Annual Report

The Administrator shall submit an annual report to the Regional Water Board for each calendar year through the CIWQS Program Web site. The annual report shall be submitted by April 1st following the monitoring year. The annual report shall, at a minimum, include the following:

1. A cover letter, included as an electronic attachment in CIWQS. The cover letter shall clearly identify whether the facility is operating in compliance with the General Order. The information contained in the cover letter shall clearly identify:
 - a. Facility name (Ukiah City Recycled Water Program) and address;
 - b. WDID number(1B14046RMEN) and CIWQS Place ID (806315);
 - c. Applicable period of monitoring and reporting;
 - d. The transmittal letter shall contain the following penalty of perjury statement and shall be signed by the Administrator or the Administrator's authorized agent:

"I certify under penalty of law that I have personally examined and am familiar with the information submitted in this document and all attachments and that, based on my inquiry of those individuals immediately responsible for obtaining the information, I believe that the information is true, accurate, and complete. I am aware that there are significant penalties for submitting false information, including the possibility of fine and imprisonment."
2. All monitoring specified in this MRP under sections II through IV. When CIWQS does not provide for entry into a tabular format within the system, the Administrator shall electronically submit the data in a tabular format as an attachment. If the Administrator monitors any pollutant more frequently than required by this MRP, the results of this monitoring shall be included in the calculations and reporting of the data.
3. A summary table of all recycled water users, date and term of recycled water user agreements, and use areas. Maps should be included to identify use areas. Newly permitted recycled water users and use areas shall be clearly identified. The Administrator shall maintain all Recycled Water User Agreements on file.
4. A summary of any operational problems, equipment or process malfunctions, including incidents of delivering recycled water that does not meet all recycled water quality requirements as established in WDR Order No. R1-2018-0035, and a detailed description of any corrective or preventative actions taken.
5. A summary of all other violations of the General Order, NOA, and this MRP, including a description of the requirement that was violated, and a description of and the severity of each violation; and actions taken to correct the violations and prevent future violations;
6. A summary table of all inspections conducted by the Administrator and recycled water users, as well as any enforcement activities initiated by the Administrator. Include all site inspection reports and a discussion of compliance and the correction action(s) taken, as well as any planned or proposed actions needed to bring the discharge into compliance with the NOA, this MRP, and/or General Order. Copies of any enforcement actions taken by the Administrator shall be provided with the Annual Report.
7. An evaluation of the performance of the recycled water treatment facility, including a discussion of capacity issues, system problems, and a forecast of the flows anticipated in the next year.
8. An evaluation of the hydraulic and nitrogen application rates at each use site and a comparison to the agronomic rates calculated using real-time ETo data and as further described in Tables 5 through 9 of the NOI which are included as attachments to this MRP (Attachment 1). If the data indicates that recycled water application rates are in excess of agronomic rates, the annual report shall also include a plan to ensure that agronomic rates identified in the NOA are not exceeded in the coming year.
9. An evaluation of groundwater monitoring data to determine whether or not recycled water use is impacting groundwater quality. The evaluation should include graphical representations of trends of all available groundwater data.
10. The name and contact information for the recycled water operator responsible for operation, maintenance, and system monitoring.
11. A statement certifying when the flow meter(s) and other monitoring instruments and devices were last calibrated, including identification of who performed the calibration.

C. Non-compliance Reporting

1. The Administrator shall notify the Regional Water Board within one (1) business day of determining that delivery of off-specification recycled water has taken place. In circumstances where the emergency requires termination of delivery to

recycled water users, the Regional Water Board shall be copied on any correspondence concerning non-compliance between the Administrator and recycled water user. This requirement does not supersede notification requirements contained within WDR/WRR Order No. R1-2018-0035 (or any future revisions) which contain requirements for the production of recycled water.

2. The Administrator shall notify the Regional Water Board within one (1) business day of any violations of the General Order, NOA, and this MRP. A written submission shall be provided within five (5) business days of the time the Permittee becomes aware of the violation. The written submission shall include:
 - a. A description of the requirement that was violated, and a description of and the severity of each violation;
 - b. Actions taken or planned to correct the violations and prevent future violations; and
 - c. The proposed time schedule for corrective actions.

D. Recycled Water Spills

Notification and reporting of spills and unauthorized discharges of recycled water discharged in or on any waters of the state, as defined in Water Code section 13050, shall be conducted in accordance with the following:

1. Tertiary Recycled Water¹

- a. For unauthorized discharges of 50,000 gallons or more of tertiary recycled water, the Administrator shall immediately notify the Regional Water Board as soon as (a) the Administrator has knowledge of the discharge or probable discharge, (b) notification is possible, and (c) notification can be provided without substantially impeding cleanup or other emergency measures.
- b. For unauthorized discharges of more than 1,000 gallons, but less than 50,000 gallons of tertiary recycled water, the Administrator shall notify the Regional Water Board as soon as possible, but no longer than 3 days after becoming aware of the discharge.

Ordered By: _____
Matthias St. John
Executive Officer

18_0058_Ukiah_RecycledWater_MRP

Figure 1: Location of Ukiah WWTP and Southern Monitoring Wells

Figure 2: Location of City of Ukiah Northern Groundwater Monitoring Wells

MRP Attachment 1: Tables 5 through 9 from the July 2018 City of Ukiah Water Recycling Program Technical Report and Notice of Intent

MRP Attachment 2: General Order Attachment C: Standard Provisions and Reporting Requirements, Order WQ 2016-0068-DDW, Water Reclamation Requirements for Recycled Water Use

¹ Tertiary Recycled Water means “disinfected tertiary recycled water” as defined in CCR, Title 22, section 60301.230 or wastewater receiving advanced treatment beyond disinfected tertiary recycled water (Water Code section 13529.2).

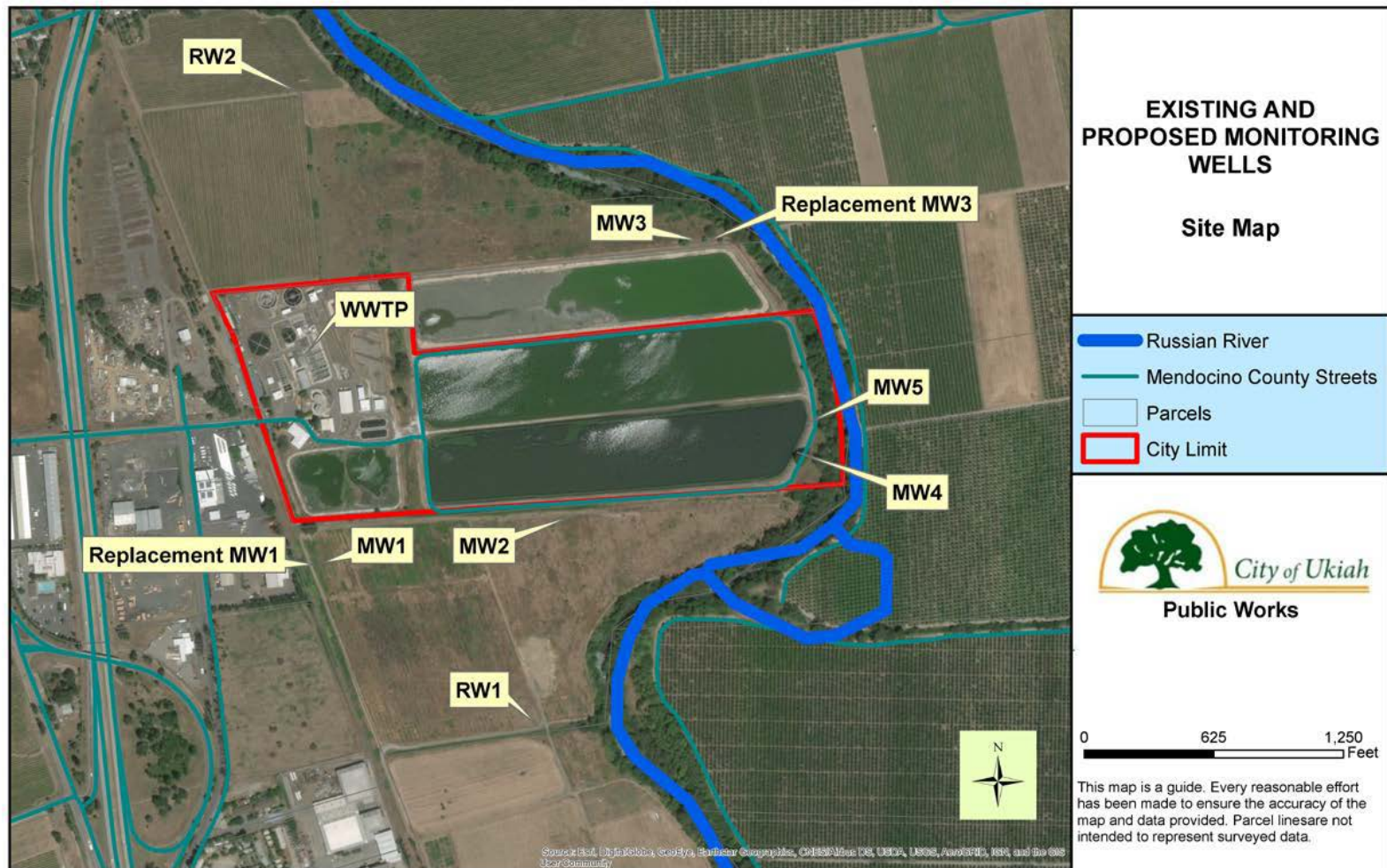


Figure 1. Location of Ukiah WWTP and Southern Monitoring Wells. Wells MW1 through MW5, located immediately adjacent to the percolation ponds are for the purpose of monitoring the discharge to the percolation ponds. Wells RW1 and RW2 are located on agricultural irrigation fields immediately north and south of the WWTP.

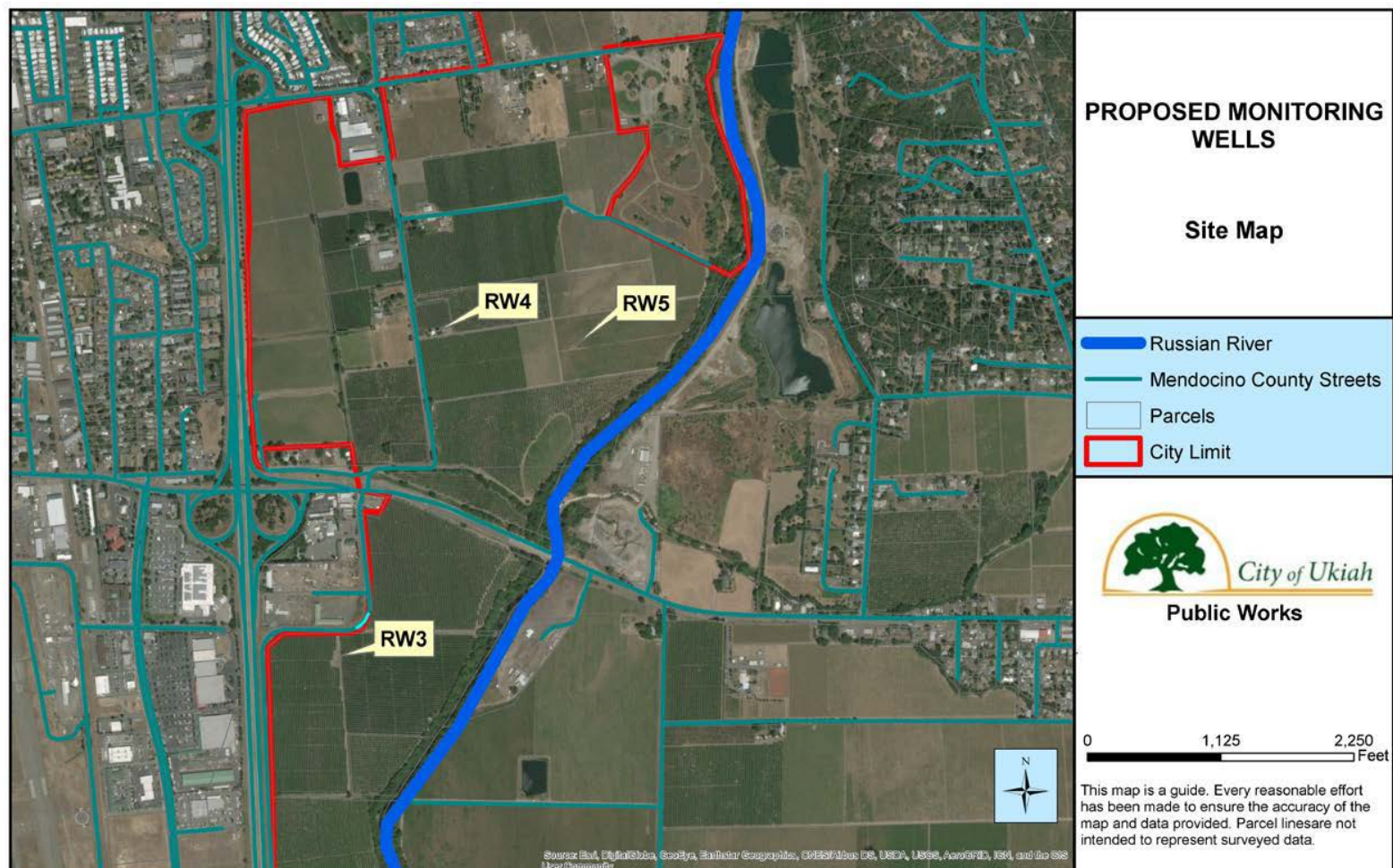


Figure 2. Location of City of Ukiah Northern Groundwater Monitoring Wells. These wells are for the purpose of monitoring recycled water irrigation areas and are located approximately 4 miles north of the Ukiah WWTP.

MRP ATTACHMENT 1
Agronomic Rate Calculation Tables
Tables 5 through 9 from the July 2018 City of Ukiah
Water Recycling Program Technical Report and Notice of Intent

Table 5. Water and Nitrogen Requirements for Turf Grass Irrigation in Ukiah Area: Based on 2010-2017 Conditions

Month	ET _o (in) ¹	Crop Coefficient (in) ²	Full ET _c (in)	Precip. (in) ³	Irrigation Req. (ET _c -P) (in)	Irrigation Efficiency ⁴	Hydraulic Agronomic Rate ⁵ (ft)	Recycled Water Total N ⁶ (mg/L)	N Loading from Recycled Water ⁷ (lb N/acre)	Irrigation Limited by Hydraulic or Nitrogen Agronomic Rate?	Maximum Recycled Water Application (ft)
January	1.47	0.61	0.90	6.38	0.00	0.80	0.00	11.0	---	Nitrogen	---
February	2.07	0.64	1.32	5.6	0.00	0.80	0.00	13.6	---		---
March	3.16	0.75	2.37	6.93	0.00	0.80	0.00	13.5	---		---
April	4.67	1.04	4.85	2.46	2.40	0.80	0.25	17.1	11.60		0.21
May	6.22	0.95	5.91	0.95	4.96	0.80	0.52	18.6	26.15		0.44
June	7.35	0.88	6.47	0.46	6.01	0.80	0.63	26.6	45.24		0.54
July	7.78	0.94	7.31	0.0	7.31	0.80	0.76	27.5	56.96		0.65
August	6.92	0.86	5.95	0.01	5.94	0.80	0.62	25.0	42.07		0.53
September	5.29	0.74	3.92	0.44	3.47	0.80	0.36	21.4	21.05		0.31
October	3.31	0.75	2.49	2.78	0.00	0.80	0.00	19.5	---		---
November	1.66	0.69	1.14	3.79	0.00	0.80	0.00	20.9	---		---
December	1.08	0.60	0.65	8.35	0.00	0.80	0.00	11.1	---		---
Annual Total	51.0	----	43.3	38.1	30.1	----	3.14	18.8	203		2.69
								Average Concentration			Based on applying 174 lbs N/acre-year ⁸

1 Monthly average ET_o for CIMIS Station #106 – Sanel Valley (January 2010 to July 2017) (downloaded from CIMIS website on 9/25/17).

2 Crop coefficients for cool-season turfgrasses in California: Meyer, J.L. and Gibeault, V.A., 1987. Turfgrass Performance when Under-irrigated. Applied Agricultural Research Vol. 2, No. 2, pp. 117-119.

3 Monthly average precipitation data obtained from the National Weather Service (UKH - Ukiah station). (January 2010 to July 2017).

4 Green, R.L. (2005). Golf Course Water Use and Regulation in California. Golf Course Management, October 2005. Efficient golf course rotary sprinkler operation is 80%.

5 Represents the hydraulic agronomic rate, acre-ft/acre.

6 Total N is the sum of ammonia-N, nitrate-N, nitrite-N and organic N. Values estimated from monthly averages at the Ukiah WWTP from October 2012-October 2016.

7 Represents the estimated nitrogen load from irrigating at the hydraulic agronomic rate.

8 The nitrogen agronomic rate is estimated at 174 lbs N/acre-year. UCANR. (2002). *Practical Lawn Fertilization. Publication 8065*. Regents of the University of California, Division of Agriculture and Natural Resources. (2- 4 lbs N/1,000 ft²-year)

Table 6. Water and Nitrogen Requirements for Vineyard Irrigation and Frost Control in the Ukiah Area: Based on 2010-2017 Conditions

Month	ETo (in) ¹	Kc, Crop Coefficient (in) ²	Full ETc (in)	P, Precip. (in) ³	Irrigation Reqt. (ETc-P) (in)	Irrigation Efficiency ⁴	Hydraulic Agronomic Rate for Irrigation Only (ft) ⁵	Recycled Water Total Nitrogen ⁶ (mg/L)	N Loading from Recycled Water ⁷ (lb N/acre)	Irrigation Only		Irrigation and Frost Control	
										Irrigation Limited by Hydraulic or Nitrogen Agronomic Rate?	Maximum Recycled Water Application (ft)	Irrigation Limited by Hydraulic or Nitrogen Agronomic Rate?	Recycled Water Application for Irrigation and Frost Control ⁹ (ft)
January	1.47	0	0	6.38	0	0.89	----	11.0	----	Nitrogen	----	Hydraulic	----
February	2.07	0	0	5.6	0	0.89	----	13.6	----		----		----
March	3.16	0	0	6.93	0	0.89	----	13.5	----		0.32		
April	4.67	0.15	0.70	2.46	0	0.89	----	17.1	----		0.32		
May	6.22	0.3	1.87	0.95	0.92	0.89	0.09	18.6	4.36		0.21		
June	7.35	0.3	2.21	0.46	1.74	0.89	0.16	26.6	11.80		0.09		
July	7.78	0.3	2.33	0.0	2.33	0.89	0.22	27.5	16.34		0.13		
August	6.92	0.3	2.08	0.01	2.07	0.89	0.19	25.0	13.16		0.11		
September	5.29	0.3	1.59	0.44	1.15	0.89	0.11	21.4	6.24		0.06		
October	3.31	0.3	0.99	2.78	0	0.89	----	19.5	----		----		
November	1.66	0	0.00	3.79	0	0.89	----	20.9	----		----		
December	1.08	0	0.00	8.35	0	0.89	----	11.1	----		----		
Annual Total	51.0	----	11.8	38.1	8.21	----	0.77	18.8 Average	51.9	0.44 Based on applying 30 lbs N/acre-year ⁸	1.24 Total nitrogen loading is 65 lbs N/acre-year ¹⁰		

1 Monthly average ETo for CIMIS Station #106 – Sanel Valley (January 2010 to July 2017) (downloaded from CIMIS website on 9/25/17).

2 Crop coefficients were obtained from "Characterization of the Ukiah Valley Groundwater Basin, Final Report", Marquez et al, June 2017.

3 Monthly average precipitation data obtained from the National Weather Service (UKH - Ukiah station). (January 2010 to July 2017).

4 Application efficiency obtained from "Irrigated Agriculture Water Needs and Management in the Mendocino County Portion of the Russian River Watershed," Prepared for the Mendocino County Water Agency, UCCE County of Mendocino, July 2008.

5 Represents the hydraulic agronomic rate, acre-ft/acre.

6 Total Nitrogen is the sum of ammonia-N, nitrate-N, nitrite-N and organic N. Values estimated from monthly averages at the Ukiah WWTP from October 2012-October 2016.

7 Represents the estimated nitrogen load from irrigating at the hydraulic agronomic rate.

8 The nitrogen agronomic rate is estimated at 30 lbs N/acre-year ("Third Edition California Code of Sustainable Winegrowing Workbook," California Sustainable Winegrowing Alliance 2012), but the vineyard requirement may be adjusted up or down based on vine vigor and crop load.

9 Frost control demand is based on 5 frost events from March to May, 2 days of frost/event, 8 hours/day of recycled water application at 0.12 acre-inches/hour.

10 Additional nitrogen added from frost control application is 35 lbs N/acre. Cover crop nitrogen requirements for perennial/annual rye grass or fescue ranges from 87 to 174 lbs N/acre.

Table 7. Water and Nitrogen Requirements for Pear Orchard Irrigation in Ukiah Area: Based on 2010-2017 Conditions

Month	ETo (in) ¹	Kc, Crop Coefficient (in) ²	Full ETC (ETo*Kc) (in)	P, Precip. (in) ³	Irrigation Req't, (ETc-P) (in)	Irrigation Efficiency ⁴	Hydraulic Agronomic Rate (ft) ⁵	Recycled Water Total N ⁶ (mg/L)	N Loading from Recycled Water ⁷ (lb N/acre)	Irrigation Limited by Hydraulic or Nitrogen Agronomic Rate?	Maximum Recycled Water Application (ft)
January	1.47	0	0	6.38	0.00	0.88	----	11.0	----	Nitrogen	----
February	2.07	0	0	5.6	0.00	0.88	----	13.6	----		----
March	3.16	0	0	6.93	0.00	0.88	----	13.5	----		----
April	4.67	0	0	2.46	0.00	0.88	----	17.1	----		----
May	6.22	0.28	1.74	0.95	0.80	0.88	0.08	18.6	3.81		0.05
June	7.35	0.67	4.92	0.46	4.46	0.88	0.42	26.6	30.56		0.30
July	7.78	0.83	6.46	0.0	6.46	0.88	0.61	27.5	45.72		0.43
August	6.92	0.87	6.02	0.01	6.01	0.88	0.57	25.0	38.69		0.40
September	5.29	0.87	4.60	0.44	4.16	0.88	0.39	21.4	22.93		0.28
October	3.31	0.87	2.88	2.78	0.11	0.88	0.01	19.5	0.54		0.01
November	1.66	0.81	1.34	3.79	0.00	0.88	----	20.9	----		----
December	1.08	0.68	0.74	8.35	0.00	0.88	----	11.1	----		----
Annual Total	51.0	----	28.7	38.1	22.0	----	2.08	18.8 Average	142.3		1.46

Based on applying 100 lbs N/acre-year⁸

¹ Monthly average ETo for CIMIS Station #106 – Sanel Valley (January 2010 to July 2017) (downloaded from CIMIS website on 9/25/17).

² Crop coefficients were obtained from "Characterization of the Ukiah Valley Groundwater Basin, Final Report", Marquez et al, June 2017 and "Understanding Your Orchard's Water Requirements," Reducing Runoff from Irrigated Lands Publication 8212, UCANR.

³ Monthly average precipitation data obtained from the National Weather Service (UKH - Ukiah station). (January 2010 to July 2017).

⁴ Application efficiency obtained from "Irrigated Agriculture Water Needs and Management in the Mendocino County Portion of the Russian River Watershed," Prepared for the Mendocino County Water Agency, UCCE County of Mendocino, July 2008.

⁵ Represents the hydraulic agronomic rate, acre-ft/acre.

⁶ Total Nitrogen is the sum of ammonia-N, nitrate-N, nitrite-N and organic N. Values estimated from monthly averages at the Ukiah WWTP from October 2012-October 2016.

⁷ Represents the estimated nitrogen load from irrigating at the hydraulic agronomic rate.

⁸ The nitrogen agronomic rate is estimated at 100 lbs N/acre-year. Discussed during meeting with Ukiah Area pear farmers and representatives of the Mendocino County Farm Bureau on September 15, 2017 and referenced in "Fertilizer Guide for Pears," FG39, Oregon State University.

Table 8. Water and Nitrogen Requirements for Pasture Irrigation in Ukiah Area: Based on 2010-2017 Conditions

Month	ETo (in) ¹	Kc, Crop Coefficient (in) ²	Full ETc (ETo*Kc) (in)	P, Precip. (in) ³	Irrigation Req't, (ETc-P) (in)	Irrigation Efficiency ⁴	Hydraulic Agronomic Rate (ft) ⁵	Recycled Water Total N ⁶ (mg/L)	N Loading from Recycled Water ⁷ (lb N/acre)	Irrigation Limited by Hydraulic or Nitrogen Agronomic Rate?
January	1.47	0	0	6.38	0.00	0.69	----	11.0	----	Hydraulic
February	2.07	0	0	5.6	0.00	0.69	----	13.6	----	
March	3.16	0	0	6.93	0.00	0.69	----	13.5	----	
April	4.67	0	0	2.46	0.00	0.69	----	17.1	----	
May	6.22	0.8	4.98	0.95	4.03	0.69	0.49	18.6	24.62	
June	7.35	0.8	5.88	0.46	5.42	0.69	0.65	26.6	47.32	
July	7.78	0.8	6.22	0.0	6.22	0.69	0.75	27.5	56.20	
August	6.92	0.8	5.54	0.01	5.53	0.69	0.67	25.0	45.37	
September	5.29	0.8	4.23	0.44	3.79	0.69	0.46	21.4	26.64	
October	3.31	0.8	2.65	2.78	1.00	0.69	---	19.5	---	
November	1.66	0	0	3.79	0.00	0.69	----	20.9	----	
December	1.08	0	0	8.35	0.00	0.69	----	11.1	----	
Annual Total	51.0	----	29.5	38.1	25.0	----	3.02	18.8	200	
								Average	Nitrogen Requirement is 206 lbs N/acre-year⁸	

1 Monthly average ETo for CIMIS Station #106 – Sanel Valley (January 2010 to July 2017) (downloaded from CIMIS website on 9/25/17).

2 Crop coefficients were obtained from "Characterization of the Ukiah Valley Groundwater Basin, Final Report", Marquez et al, June 2017.

3 Monthly average precipitation data obtained from the National Weather Service (UKH - Ukiah station). (January 2010 to July 2017).

4 Application Efficiency obtained from "Characterization of the Ukiah Valley Groundwater Basin, Final Report", Marquez et al, June 2017.

5 Represents the hydraulic agronomic rate, acre-ft/acre.

6 Total Nitrogen is the sum of ammonia-N, nitrate-N, nitrite-N and organic N. Values estimated from monthly averages at the Ukiah WWTP from October 2012-October 2016.

7 Represents the estimated nitrogen load from irrigating at the hydraulic agronomic rate.

8 The nitrogen agronomic rate is estimated at 206 lbs N/acre-year. Based on the average of five different pasture crop requirements: Clover (228 lb N/acre), Orchardgrass (210 lb N/acre), Rye Grass (192 lb N/acre), Tall Fescue (192 lb N/acre), Timothy Grass (210 lb N/acre). "Crop Nutrient Harvest Removal," (2009), University of California Cooperative Extension. The nitrogen requirements of the pasture crop under cultivation will be used for ongoing agronomic rate assessments.

Table 9. Water and Nitrogen Requirements for Alfalfa Irrigation in Ukiah Area: Based on 2010-2017 Conditions

Month	ET _o (in) ¹	Kc, Crop Coefficient (in) ²	Full ET _c (ET _o *Kc) (in)	P, Precip. (in) ³	Irrigation Req _t , (ET _c -P) (in)	Irrigation Efficiency ⁴	Hydraulic Agronomic Rate (ft) ⁵	Recycled Water Total N ⁶ (mg/L)	N Loading from Recycled Water ⁷ (lb N/acre)	Irrigation Limited by Hydraulic or Nitrogen Agronomic Rate?
January	1.47	0.95	1.40	6.38	0.00	0.7	---	11.0	---	Hydraulic
February	2.07	0.95	1.96	5.6	0.00	0.7	---	13.6	---	
March	3.16	0.95	3.00	6.93	0.00	0.7	---	13.5	---	
April	4.67	0.95	4.43	2.46	1.98	0.7	0.24	17.1	10.94	
May	6.22	2.50	7.07	0.95	6.04	0.7	0.72	18.6	36.39	
June	7.35	2.50	6.34	0.46	5.98	0.7	0.71	26.6	51.51	
July	7.78	2.50	6.50	0.0	6.50	0.7	0.77	27.5	57.86	
August	6.92	2.50	5.48	0.01	5.37	0.7	0.64	25.0	43.43	
September	5.29	2.50	4.02	0.44	3.40	0.7	0.41	21.4	23.57	
October	3.31	0.95	2.84	2.78	0.33	0.7	0.04	19.5	2.08	
November	1.66	0.95	1.57	3.79	0.00	0.7	---	20.9	---	
December	1.08	0.95	1.03	8.35	0.00	0.7	---	11.1	---	
Annual Total	51.0	---	45.7	38.1	29.6	---	3.53	18.8	225.8	
								Average	Nitrogen Requirement is 480 lbs N/acre- year⁸	

1 Monthly average ET_o for CIMIS Station #106 – Sanel Valley (January 2010 to July 2017) (downloaded from CIMIS website on 9/25/17).

2 Crop coefficients were obtained from "FAO Irrigation and Drainage Paper 24, Crop Water Requirements, revised 1977." Assumed four cuttings/year; Kc = 0.4 (low), Kc = 0.95 (mean), Kc = 1.15 (peak)

3 Monthly average precipitation data obtained from the National Weather Service (UKH - Ukiah station). (January 2010 to July 2017).

4 Application Efficiency obtained from "Agronomist Report to Carollo Engineers, Inc.," RB Smith Consulting, September 2015.

5 Represents the hydraulic agronomic rate, acre-ft/acre.

6 Total Nitrogen is the sum of ammonia-N, nitrate-N, nitrite-N and organic N. Values estimated from monthly averages at the Ukiah WWTP from October 2012-October 2016.

7 Represents the estimated nitrogen load from irrigating at the hydraulic agronomic rate.

8 The nitrogen agronomic rate is estimated at 480 lbs N/acre-year. Alfalfa nitrogen requirement is from the "Western Fertilizer Handbook (9th Edition)," California Plant Health Association.

MRP Attachment 2

**General Order Attachment C: Standard Provisions and Reporting Requirements,
Order WQ 2016-0068-DDW, Water Reclamation Requirements for
Recycled Water Use**

ATTACHMENT C: STANDARD PROVISIONS AND REPORTING REQUIREMENTS
ORDER WQ 2016-0068-DDW
WATER RECLAMATION REQUIREMENTS
FOR RECYCLED WATER USE

A. GENERAL PROVISIONS

1. Duty to Comply

- a. An Administrator must comply with all of the conditions of this General Order and the MRP. Any General Order or MRP non-compliance constitutes a violation of the Water Code and/or Basin Plan and is subject to enforcement action.
- b. The filing of a request by the Administrator for a modification, revocation and reissuance, termination, a notification of planned changes, or anticipated non-compliance does not stay any General Order or MRP condition.

2. Duty to Mitigate

The Administrator shall take all reasonable steps to minimize or prevent any discharge in violation of this General Order which has a reasonable likelihood of adversely affecting public health or the environment, including such accelerated or additional monitoring as requested by the State or Regional Water Board to determine the nature and impact of the violation.

3. Property Rights

This General Order does not convey any property rights of any sort or any exclusive privileges. The requirements prescribed herein do not authorize the commission of any act causing injury to the property of another, nor protect the discharger from liabilities under federal, state, or local laws.

4. Duty to Provide Information

The Administrator shall furnish, within a reasonable time, any information the Regional Water Board may request to determine whether cause exists for modifying, revoking and reissuing, or terminating the General Order coverage. The Administrator shall also furnish to the Regional Water Board, upon request, copies of records required to be kept by its General Order.

5. Availability

A copy of this General Order, the NOA, and the MRP shall be maintained at the Administrator facilities and be available at all times to operating personnel.

B. GENERAL REPORTING REQUIREMENTS

1. Signatory Requirements

- a. All reports required by this General Order and other information requested by the Regional Water Board shall be signed by the Administrator principal owner or operator, or by a duly authorized representative of that person.

ATTACHMENT C: STANDARD PROVISIONS AND REPORTING REQUIREMENTS
ORDER WQ 2016-0068-DDW
WATER RECLAMATION REQUIREMENTS
FOR RECYCLED WATER USE

Duly authorized representative is one whose:

- 1) Authorization specifies either an individual or a position having responsibility for the overall operation of the regulated facility or activity, such as general manager in a partnership, manager, operator, superintendent, position of equivalent responsibility, or an individual or position having overall responsibility for environmental matters for the company. (A duly authorized representative may thus be either a named individual or any individual occupying a named position), and
- 2) Written authorization is submitted to the Regional Water Board. If an authorization becomes no longer accurate because a different individual or position has responsibility for the overall operation of the facility, a new authorization satisfying the requirements above must be submitted to the Regional Water Board prior to or together with any reports, information, or applications to be signed by an authorized representative.

b. Certification

All reports signed by a duly authorized representative under Provision C.1 shall contain the following certification:

"I certify under penalty of law that this document and all attachments are prepared under my direction or supervision in accordance with a system designed to assure that qualified personnel properly gathered and evaluated the information submitted. Based on my inquiry of the person or persons who managed the system, or those persons directly responsible for gathering the information, the information submitted is, to the best of my knowledge and belief, true, accurate, and complete. I am aware that there are significant penalties for submitting false information, including the possibility of fine and imprisonment for knowing violations."

2. Should the responsible reporting party discover that it failed to submit any relevant facts or that it submitted incorrect information in any report, it shall promptly submit the missing or correct information. All violations of any requirements in this General Order, including Uniform Statewide Recycling Criteria requirements shall be submitted in the annual self-monitoring reports.

3. False Reporting

Any person who knowingly makes any false statement, representation, or certification in any record or other document submitted or required to be maintained under this General Order, including monitoring reports or reports of compliance or non-compliance shall be subject to enforcement procedures as identified in Section C of these Provisions.

ATTACHMENT C: STANDARD PROVISIONS AND REPORTING REQUIREMENTS
ORDER WQ 2016-0068-DDW
WATER RECLAMATION REQUIREMENTS
FOR RECYCLED WATER USE

C. ENFORCEMENT

1. The provision contained in this enforcement section shall not act as a limitation on the statutory or regulatory authority of the State and Regional Water Board.
2. Any violation of this General Order constitutes violation of the Water Code and regulations adopted thereunder, and are the basis for enforcement action, General Order termination, General Order revocation and reissuance, denial of an application for General Order reissuance, or a combination thereof.
3. The State and Regional Water Board may impose administrative civil liability, may refer a discharger to the State Attorney General to seek civil monetary penalties, may seek injunctive relief or take other appropriate enforcement action as provided in the Water Code for violation of this General Order.