

North Coast Regional Water Quality Control Board

ORDER No. R1-2021-0016
WDID No. 1A84073OSIS
WASTE DISCHARGE REQUIREMENTS
for
CITY OF YREKA
WASTEWATER TREATMENT FACILITY
SISKIYOU COUNTY

The following Discharger is subject to waste discharge requirements (WDRs) as set forth in this Order:

Table 1. Discharger Information

Discharger	City of Yreka
Name of Facility	City of Yreka Wastewater Treatment Facility
Facility Address	856 North Main Street
	Yreka, CA 96097

The discharge by the City of Yreka from the discharge point identified below is subject to waste discharge requirements as set forth in this Order

Table 2. Discharge Location

Discharge Point	Effluent Description	Discharge Point Latitude	Discharge Point Longitude	Receiving Water
001	Treated Municipal Wastewater	41.744603	122.630377	Groundwater

IT IS HEREBY ORDERED, that Order No. R1-2003-0047 is rescinded, except for enforcement purposes, and in order to meet the provisions contained in division 7 of the Water Code (commencing with section 13000) and regulations adopted thereunder, the Discharger shall comply with the requirements in this Order.

I, Matthias St. John, Executive Officer, do hereby certify that this Order with all attachments is a full, true, and correct copy of an Order adopted by the California Regional Water Quality Control Board, North Coast Region, on **June 17, 2021**.

Matthias St. John, Executive Officer

21_0016_Yreka_WDR

I. FACILITY INFORMATION

The following Discharger is subject to waste discharge requirements as set forth in this Order:

Table 3. Facility Information

Discharger	City of Yreka
Name of Facility	City of Yreka Wastewater Treatment Facility
Facility Address	856 North Main Street
	Yreka, CA 96097
	Siskiyou County
Facility Contact, Title, and Phone	Matthew Bray, Director of Public Works, (530) 841-2386
Mailing Address	701 Fourth Street, Yreka, CA 96097
Type of Facility	Publicly Owned Treatment Works (POTW)
Facility Design Flow	1.0 million gallons per day (mgd) monthly Average Dry Weather Flow (ADWF); 6.8 mgd Peak Wet Weather Flow (PWWF)

II. FINDINGS

The California Regional Water Quality Control Board, North Coast Region (hereinafter Regional Water Board), finds:

A. Basis and Rationale for Requirements

The Regional Water Board developed the requirements in this Order based on information submitted as part of the Discharger's application for permit renewal, monitoring data submitted during the term of the Discharger's previous Order, and other available information.

B. Background and Facility Description

The City of Yreka (hereinafter Discharger) owns and operates facilities for the collection, treatment and disposal of municipal wastewater from the city of Yreka. These facilities consist of a collection system, pumping stations, screening, activated sludge secondary treatment, aerobic sludge digestion, clarification, filtration and disinfection by chlorination. The wastewater treatment facility (Facility) was originally constructed in 1972 and is located at the north end of the City, as shown on Attachments A, B and C, incorporated herein and made part of this Order. Treated and disinfected effluent is pumped to four percolation ponds and to approximately 22.4-acre subsurface drip disposal fields located north of the Facility and adjacent to Yreka Creek. Treated effluent flows under approximately 1.0 mgd discharge to the subsurface drip disposal fields; treated effluent flows over 1.0 mgd discharge to both the subsurface drip disposal fields and the

percolation ponds. The four percolation ponds are used primarily during high flow periods to accommodate larger effluent flows, while the subsurface drip disposal fields are used primarily during summertime low flow periods. The subsurface drip disposal fields were designed to accommodate up to 1.3 mgd of treated effluent disposal. Aerobically digested sludge is pumped to a centrifuge for mechanical dewatering and final disposal at a permitted landfill.

The Facility has a design average dry weather flow (ADWF) of 1.0 mgd and a design peak wet weather flow (PWWF) of 6.8 mgd. The Discharger submitted a complete Report of Waste Discharge (ROWD) on March 30, 2018. Waste Discharge Requirements (WDRs) Order No. R1-2003-0047, adopted by the Regional Water Board on May 15, 2003, are currently in effect for the Facility.

Norcal Products is a categorical industrial user (CIU) connected to the Discharger's wastewater collection system. Section VIII General Provisions F requires the Discharger is to develop a pretreatment program to regulate this CIU and other industrial users in accordance with National Pretreatment Requirements as set forth in Section 40, Part 403 of the Code of Federal Regulations.

Attachment A provides a map of the general location of the Facility. Attachment B provides a map of the Facility and the City of Yreka service area. Attachment C provides a design Facility layout. Attachment D provides a Facility flow schematic. Attachment E is the Monitoring and Reporting Program.

Legal Authorities

This Order serves as WDRs for discharges to land issued pursuant to section 13263 of the California Water Code (Water Code).

C. Basin Plan

As required by Water Code section 13263(a), these WDRs are crafted to implement the Water Quality Control Plan for the North Coast Region (Basin Plan), and in so doing, the Regional Water Board has taken into consideration the beneficial uses to be protected, the water quality objectives (both numeric and narrative) reasonably required for that purpose, other (including previous) waste discharges, the need to prevent nuisance, and the provisions of Water Code section 13241. The Basin Plan contains implementation plans and policies for protecting waters of the basin. The Basin Plan implements State Water Resources Control Board (State Water Board) Resolution No. 88-63, which established state policy that all waters, with certain exceptions, should be considered suitable or potentially suitable for municipal or domestic supply.

The Basin Plan identifies beneficial uses for each hydrologic area in the Region, as well as for specific waterbodies and broad categories of waters. Protection will be afforded to the present and potential beneficial uses of waters of the North

Coast Region as designated and presented in Table 2-1 of the Basin Plan. The beneficial uses of any specifically identified water body generally apply to all its tributaries. Thus, beneficial uses applicable to area groundwater within the Shasta Valley Hydrologic Area to be protected are as follows:

- a. Municipal and domestic supply
- b. Agricultural water supply
- c. Industrial service supply
- d. Industrial process supply
- e. Aquaculture
- f. Native American Culture

Table 2-1 of the Basin Plan identifies the following existing and potential beneficial uses of surface waters in the Shasta Valley Hydrologic Area are as follows:

- a. Municipal and domestic supply
- b. Agricultural supply
- c. Industrial service supply
- d. Industrial process supply
- e. Groundwater recharge
- f. Freshwater replenishment
- g. Navigation
- h. Hydropower generation
- i. Water contact recreation
- j. Non-contact water recreation
- k. Commercial and sport fishing
- l. Warm freshwater habitat
- m. Cold freshwater habitat
- n. Wildlife habitat
- o. Rare, threatened, or endangered species
- p. Migration of aquatic organisms
- q. Spawning, reproduction, and/or early development
- r. Aquaculture
- s. Wetland Habitat
- t. Water Quality Enhancement
- u. Flood Peak Attenuation/ Flood Water Storage
- v. Native American Cultural Use
- w. Subsistence Fishing

D. Water Code

The Water Code establishes the authority for the Regional Water Board to establish water quality objectives, impose discharge prohibitions, and prescribe waste discharge and reclamation requirements. Water Code section 13241

requires each regional board to “establish such water quality objectives in water quality control plans as in its judgment will ensure the reasonable protection of beneficial uses and the prevention of nuisance [...].” The control of waste is established through effluent limitations and other requirements in Waste Discharge Requirement permits. Water Code section 13243 provides that “A regional board, in a water quality control plan or in waste discharge requirements, may specify certain conditions or areas where the discharge of waste, or certain types of waste, will not be permitted.”

It is the Regional Water Board’s intent that this Order shall ensure attainment of water quality standards, applicable water quality objectives, and protection of beneficial uses of receiving waters. This Order therefore requires the Discharger to comply with all prohibitions, discharge specifications, receiving water limitations, standard provisions, and monitoring and reporting requirements. The Order further prohibits discharges from causing violations of water quality objectives or causing conditions to occur that create a condition of nuisance or water quality impairment in receiving waters as a result of the discharge.

E. Title 27 Exemption.

The wastewater treatment, storage, and disposal activities described in this Order are exempt from the requirements of Consolidated Regulations for Treatment, Storage, Processing, or Disposal of Solid Waste in California Code of Regulations, title 27, division 2, Subdivision 1, section 20005, et seq. The activities are exempt from the requirements of title 27 so long as the activity meets, and continues to meet, all preconditions listed below. (Cal. Code Regs., tit. 27, § 20090.)

1. Sewage—Discharges of domestic sewage or treated effluent which are regulated by WDRs issued pursuant to California Code of Regulations, title 23, division 3, chapter 9, or for which WDRs have been waived, and which are consistent with applicable water quality objectives, and treatment or storage facilities associated with municipal wastewater treatment plants, provided that residual sludge or solid waste from wastewater treatment facilities shall be discharged only in accordance with the applicable State Water Board promulgated provisions of this division. (Cal. Code Regs., tit. 27, § 20090(a).)
2. Wastewater—Discharges of wastewater to land, including but not limited to evaporation ponds, percolation ponds, or subsurface leach fields if the following conditions are met:
 - a. the applicable Regional Water Board has issued WDRs, reclamation requirements, or waived such issuance;
 - b. the discharge is in compliance with the applicable water quality control plan; and

- c. the wastewater does not need to be managed according to, California Code of Regulations, title 22, division 4.5, chapter 11, as a hazardous waste. (Cal. Code Regs., tit. 27, § 20090(b).
3. Underground Injection—Discharges of waste to wells by injection pursuant to the Underground Injection Control Program established by the U.S. Environmental Protection Agency under the Safe Drinking Water Act, 42 US Code section 300(h), see Code of Federal Regulations title 40, Parts 144 to 146. (Cal. Code Regs., tit. 27, § 20090(c).)
4. Fully Enclosed Units—Waste treatment in fully enclosed facilities, such as tanks, or in concrete lined facilities of limited areal extent, such as oil water separators designed, constructed, and operated according to American Petroleum Institute specifications. (Cal. Code Regs., tit. 27, § 20090(i).)

F. Antidegradation Policy

State Water Board Resolution 68-16, the Statement of Policy with Respect to Maintaining High Quality Waters of California (hereafter the Antidegradation Policy) requires the disposal of waste be regulated to achieve the highest water quality consistent with the maximum benefit to the people of the state. The Antidegradation Policy applies when a discharge may degrade high quality waters¹ and requires the following:

1. Higher quality water will be maintained until it has been demonstrated to the state that any change will be consistent with the maximum benefit to the people of the state, will not unreasonably affect present and anticipated beneficial use of the water, and will not result in water quality less than prescribed in the policies.

Any activity that produces a waste and discharges to existing high quality waters will be required to meet Waste Discharge Requirements that will result in the best practicable treatment or control of the discharge necessary to assure pollution or nuisance will not occur, and the highest water quality consistent with the maximum benefit to the people of the state will be maintained.

Limited degradation of groundwater by some waste constituents associated with domestic wastewater effluent, after effective source control, treatment, and control measures are implemented, is consistent with the maximum benefit to the people of the state. The economic prosperity of a small disadvantaged community and

¹ The Board interprets “high quality waters” as the best water quality that has existed since the Policy was adopted in 1968 after considering any subsequently authorized degradation that has been allowed in compliance with the Policy.

associated industry is of maximum benefit to the people of the state and provides sufficient justification for allowing the limited groundwater degradation that may occur pursuant to this Order provided the terms of the Basin Plan, and other applicable State Water Board and Regional Water Board policies are consistently met.

This Order is consistent with Resolution No. 68-16 because implementation of the Order will result in the application of management measures to treat the discharge of waste that constitutes the best practicable treatment or control of the discharge. This Order contains discharge prohibitions, effluent limitations, receiving water limitations, monitoring requirements, and a requirement for the Discharger to continue to assess whether the discharges are affecting groundwater quality. These provisions will ensure that the discharge does not result in exceedances of water quality standards and is protective of beneficial uses of groundwater and surface waters within the Shasta Valley Hydrologic Area.

This Order does not authorize an increased volume or concentration of waste, or a decreased level of treatment. This Order includes requirements to develop and implement a source control program to prevent toxic pollutants from passing through or interfering with the operation of the wastewater treatment system.

This Order also includes monitoring requirements to assess the concentration of nitrogen in the treated effluent to ensure that the best practicable treatment and control measures are effective and protective of beneficial uses of groundwater and surface waters.

G. Human Right to Water

It is the policy of the State of California that every human being has the right to safe, clean, affordable, and accessible water adequate for human consumption, cooking, and sanitary purposes (Water Code §106.3, subd. (a)). The Safe Drinking Water Act provides that all Californians have a right to pure and safe drinking water (Health & Safety Code § 116270, subd. (a)). This Order promotes that policy by requiring the Discharger to handle and dispose of waste in a manner that will protect water quality objectives, including those that protect drinking water supplies.

H. Endangered Species Act

This Order does not authorize any act that results in the taking of a threatened or endangered species or any act that is now prohibited, or becomes prohibited in the future, under either the California Endangered Species Act (Fish and Game Code sections 2050 to 2097) or the Federal Endangered Species Act (16 U.S.C.A sections 1531 to 1544). The Discharger is responsible for meeting all requirements of the applicable Endangered Species Act.

I. Monitoring and Reporting

Water Code section 13267 authorizes the Regional Water Board to require technical and monitoring reports. The Monitoring and Reporting Program establishes monitoring and reporting requirements to implement State requirements. The Monitoring and Reporting Program is necessary to determine compliance with the conditions of this Order and to determine the discharges impacts, if any, on groundwater. As such, the burden, including costs, of this monitoring bears a reasonable relationship to the need for that information and the benefits to be obtained from that information. This Monitoring and Reporting Program is provided in Attachment E. The Executive Officer of the Regional Water Board is delegated the authority to modify the Monitoring and Reporting Program, as determined appropriate to protect water quality.

J. California Environmental Quality Act (CEQA)

The discharges covered under this permit are exempt pursuant to California Code of Regulations, title 14, section 15301 (ongoing or existing projects). The Facility is an existing wastewater treatment facility with no expansion of use or wastewater flow beyond existing use or design capacity.

K. Notification of Interested Parties

The Regional Water Board has notified the Discharger and interested agencies and persons of its intent to prescribe Waste Discharge Requirements for the discharge and has provided them with an opportunity to submit their written comments and recommendations.

L. Consideration of Public Comment

The Regional Water Board provided a 30-day written comment period and in a public meeting, heard and considered all comments pertaining to the discharge.

M. Petition of Action

Any person aggrieved by this action of the Regional Water Board may petition the State Water Board to review the action in accordance with Water Code section 13320 and California Code of Regulations, title 23, sections 2050 and following. The State Water Board must receive the petition by 5:00 p.m., 30 days after the date of this Order, except that if the thirtieth day following the date of this Order falls on a Saturday, Sunday, or state holiday, the petition must be received by the State Water Board by 5:00 p.m. on the next business day. Copies of the law and regulations applicable to filing petitions may be found on the Internet at the North Coast Regional Water Quality Control Board [Website](https://www.waterboards.ca.gov/public_notices/petitions/water_quality/) for notices or will be provided upon request.
(https://www.waterboards.ca.gov/public_notices/petitions/water_quality/)

III. DISCHARGE PROHIBITIONS

- A.** The discharge of waste to Yreka Creek, Shasta River and the Klamath River and its tributaries is prohibited.
- B.** The discharge of any waste not disclosed by the Discharger or not within the reasonable contemplation of the Regional Water Board is prohibited.
- C.** The presence of surfacing effluent from leach field areas is prohibited.
- D.** Creation of pollution, contamination, or nuisance as defined by section 13050 of the Water Code is prohibited.
- E.** The discharge of untreated or partially treated waste (receiving a lower level of treatment than described in Finding II.B) from anywhere within the collection, treatment, or disposal system is prohibited.
- F.** Any sanitary sewer overflow (SSO) that results in a discharge of untreated or partially treated wastewater to (a) waters of the state or (b) land that creates pollution, contamination, or nuisance as defined in Water Code section 13050 is prohibited.
- G.** The discharge of waste to land that is not owned by or under agreement to use by the Discharger is prohibited.
- H.** The discharge of waste at any point not described in Table 2 or authorized by a permit issued by the State Water Board or Regional Water Board is prohibited.
- I.** The average monthly dry weather flow of waste through the Facility shall not exceed 1.0 mgd. Compliance with this prohibition shall be determined as defined in section IX.B of this Order.
- J.** Discharges of waste that violate any narrative or numerical water quality objective that are not authorized by waste discharge requirements or other order or action by the Regional or State Water Board are prohibited.
- K.** The discharge of septage or other bulk, high-strength wastes into the Facility or the sanitary sewer system is prohibited.

IV. EFFLUENT LIMITATIONS

- A.** The Discharger shall maintain compliance with the following effluent limitations for the discharge of treated wastewater to the leach field beds, with compliance measured at Monitoring Location EFF-002 as described in the Monitoring and Reporting Program.

Table 4. Effluent Limitations

Parameter	Units	Average Weekly Effluent Limitation	Maximum Daily Effluent Limitation	Instantaneous Minimum Effluent Limitation	Instantaneous Maximum Effluent Limitation
Biochemical Oxygen Demand (5-day @ 20°C)	mg/L	30	60	--	--
Total Suspended Solids	mg/L	30	60	--	--
Settleable Solids	ml/L	0.1	0.2	--	--
pH	Standard units	--	--	6.5	8.5
Total Coliform Organisms	MPN/100 mL	23 ²	230	--	--

V. DISCHARGE SPECIFICATIONS

A. Objectionable Odor

The Discharger shall prevent objectionable odors originating at the Facility from being perceivable beyond the limits of the wastewater treatment and disposal areas.

B. Public Contact

The Discharger shall preclude or control public contact with wastewater through such means as fences and signs, or other applicable alternatives.

C. Vector Control

The Discharger shall manage the Facility and effluent disposal area to prevent the breeding of mosquitos.

² Median

VI. SOLIDS HANDLING REQUIREMENTS

- A.** Sludge, as used in this Order, means the solid, semisolid, and liquid residues removed during primary or secondary wastewater treatment processes.
- B.** All collected sludges and other solid waste removed from liquid wastes shall be removed from lift stations, headworks, clarification, filtration and recirculation as needed to ensure optimal plant operation.
- C.** All collected sludges and other solid waste removed from liquid wastes shall be disposed of at a legal point of disposal, in accordance with applicable federal and State regulations.
- D.** The use and disposal of biosolids shall comply with all of the land application and disposal requirements in 40 Code of Federal Regulations (CFR) Part 503, which are enforceable by the U.S. EPA, not the Regional Water Board. If during the life of this Order, the state accepts primacy for implementation of 40 CFR Part 503, the Regional Water Board may also initiate enforcement where appropriate.
- E.** Sludge or biosolids that are disposed of in a municipal solid waste landfill or used as daily landfill cover shall meet the applicable requirements of 40 CFR Part 258. In the annual self-monitoring report, the Discharger shall report the amount of sludge placed in a landfill and the landfill(s) which received the sludge or biosolids.
- F.** The Discharger shall prevent and minimize any sludge use or disposal in violation of this Order that may adversely affect human health or the environment.
- G.** Solids and sludge storage shall not create a nuisance, such as objectionable odors or flies, and shall not result in groundwater contamination.
- H.** Solids and sludge storage sites shall have facilities adequate to divert surface water runoff from adjacent areas, to protect the boundaries of the site from erosion, and to prevent drainage from the storage site. Adequate protection is defined as protection from at least a 100-year storm with a 100-year recurrence interval and 24-hour duration.
- I.** The storage of sludge and solids shall not cause waste material to be in a position where it is, or can be, conveyed from the storage site and deposited in waters of the state.

VII. RECEIVING WATER LIMITATIONS

A. Groundwater Limitations

1. The collection, treatment, storage, and disposal of wastewater shall not cause or contribute to degradation of groundwater quality unless a technical evaluation is performed that demonstrates that any degradation that could reasonably be expected to occur, after implementation of all regulatory requirements (e.g., Basin Plan) and reasonable best management practices, will not violate groundwater quality objectives or cause impacts to beneficial uses of groundwater.
2. The collection, treatment, storage and disposal of the treated wastewater shall not cause or contribute to levels of chemical constituents in groundwater that exceed the primary and secondary maximum contaminant levels specified in California Code of Regulations, title 22, Table 64431-A, Table 64444-A, Table 64449-A, and Table 64449-B. (Cal. Code Regs., tit. 22, § 64444 and § 64449.).
3. The collection, treatment, storage and disposal of the treated wastewater shall not cause or contribute to levels of radionuclides in groundwater in excess of the limits specified in California Code of Regulations, title 22, Table 64442 and Table 64443. (Cal. Code Regs., tit. 22, § 64442, and § 64443.).
4. The collection, treatment, storage, and disposal of wastewater shall not cause groundwater to contain taste- or odor-producing substances in concentrations that cause nuisance or adversely affect beneficial uses.
5. The collection, treatment, storage and disposal of the treated wastewater shall not cause the median concentration of coliform organisms over any 7-day period to exceed 1.1 MPN per 100 milliliters or 1 colony per 100 milliliters in groundwater used or potentially used for domestic and municipal supply (MUN).
6. The collection, treatment, storage and disposal of wastewater shall not cause groundwater to contain toxic substances in concentrations that are toxic to, or that produce detrimental physiological responses in humans, or that adversely affects beneficial uses. This limitation applies regardless of whether the toxicity is caused by a single substance or the synergistic effect of multiple substances.

VIII. GENERAL PROVISIONS

Failure to comply with provisions or requirements of this Order, may subject the Discharger to administrative or civil liabilities, criminal penalties, and/or other enforcement remedies. Additionally, certain violations may subject the Discharger to

civil or criminal enforcement from appropriate local, state, or federal law enforcement entities. The Discharger shall comply with the following provisions:

A. Availability

A copy of this Order and the associated Monitoring and Reporting Program shall be maintained at the Facility and be available at all times to operating personnel.

B. Enforcement

The Discharger shall operate and maintain the Facility as described in this Order. Violation of any requirements contained in this Order subject the Discharger to enforcement action, including administrative civil liability or civil liability, under the Water Code.

C. Severability

Provisions of these waste discharge requirements are severable. If any provision of these requirements is found invalid, the remainder of these requirements shall not be affected.

D. Sanitary Sewer Overflows

On May 2, 2006, the State Water Board adopted State Water Board Order No. 2006-0003-DWQ, Statewide General WDRs for Sanitary Sewer Systems. Order No. 2006-0003-DWQ requires that all public agencies that currently own or operate sanitary sewer systems apply for coverage under the General WDRs by November 2, 2006. On September 9, 2013, the State Water Board adopted Order No. WQ-2013-0058-EXEC amending Monitoring and Reporting Program for Statewide General Waste Discharge Requirements for Sanitary Sewer Systems. The Discharger has coverage under, and is separately subject to the requirements of Order Nos. 2006-0003-DWQ and WQ-2013-0058-EXEC and any future revisions thereto for operation of its wastewater collection system.

E. Operation and Maintenance

The Discharger shall at all times properly operate and maintain all facilities and systems of collection, treatment and control (and related appurtenances) that are installed or used by the Discharger to achieve compliance with this Order. Proper operation and maintenance include adequate laboratory control and appropriate quality assurance procedures. This provision requires the operation of backup or auxiliary facilities or similar systems that are installed by a Discharger only when necessary to achieve compliance with the conditions of this Order.

The Discharger shall maintain an updated Operation and Maintenance Manual (O&M Manual) for the operational components of the Facility. The Discharger

shall update the O&M Manual, as necessary, to conform to changes in operation and maintenance of the Facility. The Discharger shall operate and maintain the Facility in accordance with the most recently updated O&M Manual. The O&M Manual shall be readily available to operating personnel on-site and for review by state inspectors.

F. Source Control and Pretreatment Provisions

The Discharger shall submit a source control program technical report to the Regional Water Board Executive Officer that describes the Discharger's source control program, including identification of staff and budget resources, and a written plan for ensuring that the Discharger is adequately assessing industrial, commercial, and residential discharges to the Facility. The written plan shall address how the Discharger will implement the specific source control provisions identified in items (1) through (5), below. The source control program technical report shall be submitted to the Regional Water Board Executive Officer by **June 15, 2023**.

The Permittee shall perform source control functions and provide a summary of source control activities conducted in the Annual Report (due **March 1st** to the Regional Water Board). Source control functions and requirements shall include the following:

1. Implement the necessary legal authorities to monitor and enforce source control standards, restrict discharges of toxic materials to the collection system and inspect facilities connected to the system.
2. If waste haulers are allowed to discharge to the Facility, establish a waste hauler permit system, to be reviewed by the Executive Officer, to regulate waste haulers discharging to the collection system or Facility.
3. Industrial Waste Survey (IWS) – The Discharger shall conduct an IWS of all the industrial users (IUs) in the service area of the Facility to determine whether any IUs are subject to pretreatment standards specified in 40 C.F.R. part 403. The Discharger shall also perform a priority pollutant scan of the influent to the Facility. At a minimum, the IWS must identify the following for each industrial user and zero-discharging categorical industrial user: whether it qualifies as a significant user; the average and peak flow rates; the SIC code; any pretreatment being implemented by each industrial user; and whether or not the Discharger has issued a permit to any of the identified industrial users. The IWS and priority pollutant monitoring is required during the 12-month period that begins on **January 1, 2023**.

The results of the IWS and priority pollutant monitoring shall be submitted to the Regional Water Board in a written report no later than **June 15, 2024**. The written report shall include a certification report indicating whether the Facility

receives pollutants from any IU that would require the Discharger to establish a pretreatment program in accordance with 40 C.F.R. part 403.

4. Perform public outreach to educate industrial, commercial, and residential users about the importance of preventing discharges of industrial and toxic wastes to the collection system or Facility
5. Perform ongoing inspections and monitoring, as necessary, to ensure adequate source control.

In the event that the Discharger identifies industrial wastes subject to regulation under the Pretreatment Program being discharged to the wastewater treatment plant, or the Regional Water Board or its Executive Officer determines that circumstances warrant pretreatment requirements in order to prevent interference [40 C.F.R. §403.3(j)] with the wastewater treatment Facility or Pass Through [40 C.F.R. §403.3(n)], then:

1. The Discharger shall notify the Regional Water Board within 30 days after there are discharges that trigger the pretreatment requirements;
2. The Discharger shall submit a revised ROWD and the pretreatment program for the Regional Water Board's review and approval as soon as possible, but **not more than one year after the Permittee's notification** to the Regional Water Board of the need for pretreatment requirements being triggered;
3. The Discharger shall enforce the federal categorical pretreatment standards on all categorical industrial users (CIUs);
4. The Discharger shall notify each CIU of its discharge effluent limits. The limits must be as stringent as the pretreatment standards contained in the applicable federal category (40 C.F.R. part 400-699). The Discharger may develop more stringent, technology-based local limits if it can show cause; and
5. The Discharger shall notify the Regional Water Board if any CIU violates its discharge effluent limits.

The Regional Water Board retains the right to take legal action against an industrial user and/or the Discharger where a user fails to meet the approved applicable federal, state, or local pretreatment standards.

The Regional Water Board may amend this Order, at any time, to require the Discharger to develop and implement an industrial pretreatment program pursuant to the requirements of 40 C.F.R. part 403 if the Regional Water Board finds that the Facility receives pollutants from an IU that is subject to pretreatment standards, or if other circumstances so warrant.

G. Change in Discharge

The Discharger shall promptly report to the Regional Water Board any material change in the character, location, or volume of the discharge.

H. Change in Control or Ownership

In the event of any change in control or ownership of land or waste discharge facilities presently owned or controlled by the Discharger, the Discharger shall notify the Regional Water Board of such changes in writing, and shall also notify the succeeding owner or operator of the existence of this Order and current compliance status in writing.

The succeeding owner or operator, in order to obtain authorization for discharges regulated by this Order, must apply in writing to the Regional Water Board Executive Officer, requesting transfer of the Order. This request must include complete identification of the new owner or operator, the reasons for the change, and effective date of the change. Discharges conducted without submittal of this request will be considered discharges without waste discharge requirements, which are violations of the Water Code.

I. Vested Rights

This Order does not convey any property rights of any sort or any exclusive privileges. The requirements prescribed herein do not authorize the commission of any act causing injury to persons or property, nor protect the Discharger from liability under federal, state, or local laws, nor create a vested right for the Discharger to continue the waste discharge.

J. Monitoring and Reporting

The Discharger shall comply with the Monitoring and Reporting Program (MRP) and any modifications to these documents as specified by the Regional Water Board Executive Officer. Chemical, bacteriological, and bioassay analyses shall be conducted at a laboratory certified for such analyses by the State of California Environmental Laboratory Accreditation Program. The Discharger shall comply with the MRP in Attachment E of this Order and any future revisions thereto.

K. Records Retention

The Discharger shall maintain records of all monitoring information, including calibration and maintenance records and all strip chart recordings for continuous monitoring instrumentation, copies of all reports required by this Order, and records of all data used to complete the application for this Order, for a period of at least three (3) years from the date of the sample, measurement, report or

application. This period may be extended upon notification of extension by the Regional Water Board Executive Officer.

L. Signatory Requirements

All reports shall be signed by persons identified below:

1. For a corporation: by a principal executive officer of at least the level of senior vice-president.
2. For a partnership or sole proprietorship: by a general partner or the proprietor.
3. For a municipality, state, federal or other public agency: by either a principal executive officer or ranking elected or appointed official.
4. A duly authorized representative of a person designated in L1, L2 or L3 of this requirement if;
 - a. the authorization is made in writing by a person described in L1, L2 or L3 of this requirement;
 - b. the authorization specifies either an individual or a position having responsibility for the overall operation of the regulated facility or activity, such as the position of plant manager, operator of a waste management unit, superintendent, or position of equivalent responsibility. (A duly authorized representative may thus be either a named individual or any individual occupying a named position);
 - c. the written authorization is submitted to the Regional Water Board prior to or together with any reports, information, or applications signed by the authorized representative.

Any person signing a document under paragraph (a) or (b) of this provision shall make the following certification:

"I certify under penalty of law that this document and all attachments were prepared under my direction or supervision in accordance with a system designed to assure that qualified personnel properly gather and evaluate the information submitted. Based on my inquiry of the person or persons who manage the system, or those persons directly responsible for gathering the information, the information submitted, is, to the best of my knowledge and belief, true, accurate, and complete. I am aware that there are significant penalties for submitting false information, including the possibility of fine and imprisonment for knowing violations."

M. Inspections

The Discharger shall permit authorized staff of the Regional Water Board the following:

1. Entrance to the premises in which treatment, collection or management of waste occurs, where an effluent source is located or in which any records required by this Order are kept;
2. Access to inspect and copy any monitoring equipment or records required for compliance with terms and conditions of this Order; and
3. Access to sample any discharge or monitoring location associated with the Facility.

N. Noncompliance

In the event the Discharger is unable to comply with any of the conditions of this Order due to breakdown of waste treatment equipment, accidents caused by human error or negligence, or other causes such as acts of nature, the Discharger shall notify Regional Water Board staff by telephone as soon as it or its agents have knowledge of the incident and confirm this notification in writing within five (5) business days of the telephone notification. The written notification shall include pertinent information explaining reasons for the noncompliance and shall indicate the steps taken to correct the problem and the dates thereof, and the steps being taken to prevent the problem from recurring.

O. Revision of Requirements

The Regional Water Board will review this Order periodically and may revise requirements when necessary.

P. Operator Certification

Supervisors and operators of wastewater treatment plants shall possess a certificate of appropriate grade in accordance with title 23, California Code of Regulations, section 3680. The State Water Board may accept experience in lieu of qualification training. In lieu of a properly certified wastewater treatment plant operator, the State Water Board may approve use of a water treatment plant operator of appropriate grade certified by the State Water Board Division of Drinking Water where water reclamation is involved.

Q. Adequate Capacity

If the Discharger's wastewater treatment plant will reach capacity within 4 years, the Discharger shall notify the Regional Water Board. A copy of such notification shall be sent to appropriate local elected officials, local permitting agencies, and

the press. Factors to be evaluated in assessing reserve capacity shall include, at a minimum, (1) comparison of the wet weather design flow with the highest daily flow, and (2) comparison of the average dry weather design flow with the lowest 30-day flow. The Discharger shall demonstrate that adequate steps are being taken to address the capacity problem. The Discharger shall submit a technical report to the Regional Water Board showing how flow volumes will be prevented from exceeding capacity, or how capacity will be increased, within 120 days after providing notification to the Regional Water Board, or within 120 days after receipt of Regional Water Board notification, that the Facility will reach capacity within 4 years. The time for filing the required technical report may be extended by the Regional Water Board. An extension of 30 days may be granted by the Executive Officer, and longer extensions may be granted by the Regional Water Board itself (title 23, Cal. Code of Regs., section 2232).

R. Special Study to Evaluate the Potential Impact to Surface Water and Groundwater

The Discharger continues to conduct evaluations to confirm that the discharge of treated municipal wastewater from the Facility to the disposal ponds and leach fields complies with the groundwater limitations set forth in section VII.A. of this Order, and does not threaten the beneficial uses of Yreka Creek, the Shasta River and the Klamath River. These evaluations include the monitoring and sampling of 11 groundwater monitoring wells in the vicinity of discharge and surface water monitoring and sampling of Yreka Creek. In the event that these evaluations indicate that the discharge is not attaining groundwater limitations, or threatens the beneficial uses of Yreka Creek, the Shasta River or the Klamath River, the Discharger shall submit a work plan with a proposed compliance schedule to bring the discharge into compliance as soon as practicable.

S. Disaster Preparedness Assessment Report and Action Plan

Natural disasters, extreme weather events, sea level rise, and shifting precipitation patterns, some of which are projected to intensify due to climate change, have significant implications for wastewater treatment and operations. Some natural disasters are expected to become more frequent and extreme according to the current science on climate change. In order to ensure that Facility operations are not disrupted, compliance with conditions of this Order are achieved, and receiving waters are not adversely impacted by permitted and unpermitted discharges, the Discharger shall submit a Disaster Preparedness Assessment Report and Action Plan to the Regional Water Board by **December 1, 2023**, for Executive Officer review and approval.

The Discharger shall: (1) conduct an assessment of the wastewater treatment facility, operations, collection, and discharge systems to determine areas of short and long-term vulnerabilities related to natural disasters and extreme weather, and other conditions projected by climate change science, if applicable; the

assessment shall consider, as applicable, impacts to plant operations due to changing influent and receiving water quality, storm surges, fires, floods, earthquakes, back-to-back severe storms, and other extreme conditions that pose a risk to plant operations and water quality; (2) identify control measures needed to protect, improve, and maintain wastewater infrastructure, waste discharge compliance, and receiving water quality in the event of a natural disaster or, if applicable, under conditions resulting from climate change; (3) develop a schedule to implement necessary control measures. Control measures shall include, but are not limited to, emergency procedures, contingency plans, alarm/notification systems, training, backup power and equipment, and the need for planned mitigations to ameliorate potential risks associated with extreme weather events and changing conditions resulting from climate change; and (4) implement the necessary control measures per the approved schedule of implementation.

T. Influent Flow Measurement Assessment Report and Action Plan

In order to ensure compliance with conditions of this Order and protection of receiving waters from permitted and unpermitted discharges, the Discharger shall submit an Influent Flow Measurement Assessment Report and Action Plan (Action Plan) to the Regional Water Board by **June 15, 2023**, for Executive Officer review and approval. The Discharger shall: (1) conduct an assessment of the proposed location and equipment for determining wastewater flow into the treatment facility; and (2) develop a schedule to implement and construct.

IX. COMPLIANCE DETERMINATION

Compliance with this Order will be determined as specified below.

A. Multiple Sample Data

When determining compliance with an average effluent limitation, and more than one sample result is available, the Discharger shall compute the arithmetic mean unless the data set contains one or more reported determinations of “Detected, but Not Quantified” (DNQ) or “Not Detected” (ND). In those cases, the Discharger shall compute the median in place of the arithmetic mean in accordance with the following procedure:

1. The arithmetic mean of all samples collected in a calendar month, calculated as the sum of all samples in a calendar month divided by the number of samples. If only one sample is collected in a calendar month, that sample result will constitute the monthly average and daily maximum results for the purpose of determining compliance with effluent limitations.
2. If the average of daily discharges over a calendar month exceeds the AMEL for a given parameter, this will represent a single violation, though the Discharger will be considered out of compliance for each day of that month

for that parameter (e.g., resulting in 31 days of non-compliance in a 31-day month). If only a single sample is taken during the calendar month and the analytical results for that sample exceeds the AMEL, the Discharger will be considered out of compliance for that calendar month. The Discharger will only be considered out of compliance for days when the discharge occurs. For any one calendar month during which no sample (daily discharge) is taken, no compliance determination can be made for that calendar month.

B. Monthly Average Dry Weather Flow

Compliance with the monthly average dry weather flow prohibition in section III.I of this Order will be determined once each month by evaluating all flow data collected in the corresponding calendar month. The flow through the Facility, measured daily and averaged monthly, must be 1.0 mgd or less, during dry weather conditions, for the month in any calendar year with the lowest average monthly flow.

C. Average Weekly Effluent Limitation (AWEL)

1. The arithmetic mean of all samples collected in a calendar week, calculated as the sum of all samples in a calendar week divided by the number of samples. If only one sample is collected in a calendar week, that sample result will constitute the weekly average and daily maximum results for the purpose of determining compliance with effluent limitations.
2. If the average of daily discharges over a calendar week exceeds the AMEL for a given parameter, this will represent a single violation, though the Discharger will be considered out of compliance for each day of that week for that parameter (e.g., resulting in 7 days of non-compliance in a 7-day week). If only a single sample is taken during the calendar week and the analytical results for that sample exceeds the AMEL, the Discharger will be considered out of compliance for that calendar week. The Discharger will only be considered out of compliance for days when the discharge occurs. For any one calendar week during which no sample (daily discharge) is taken, no compliance determination can be made for that calendar week.

D. Maximum Daily Effluent Limitation (MDEL)

If a discharge (or when applicable, the median determined by subsection A, above, for multiple sample data of a daily discharge) exceeds the MDEL for a given parameter, the Discharger will be considered out of compliance for that parameter for that one day only within the reporting period. For any one day during which no sample is taken, no compliance determination can be made for that day.

E. Instantaneous Minimum Effluent Limitations

If the analytical result of a single grab sample is lower than the instantaneous minimum effluent limitation for a parameter, the Discharger will be considered out of compliance for that parameter for that single sample. Non-compliance for each sample will be considered separately (e.g., the results of two grab samples taken within a calendar day that both are lower than the instantaneous minimum effluent limitation would result in two instances of non-compliance with the instantaneous minimum effluent limitation).

F. Instantaneous Maximum Effluent Limitations

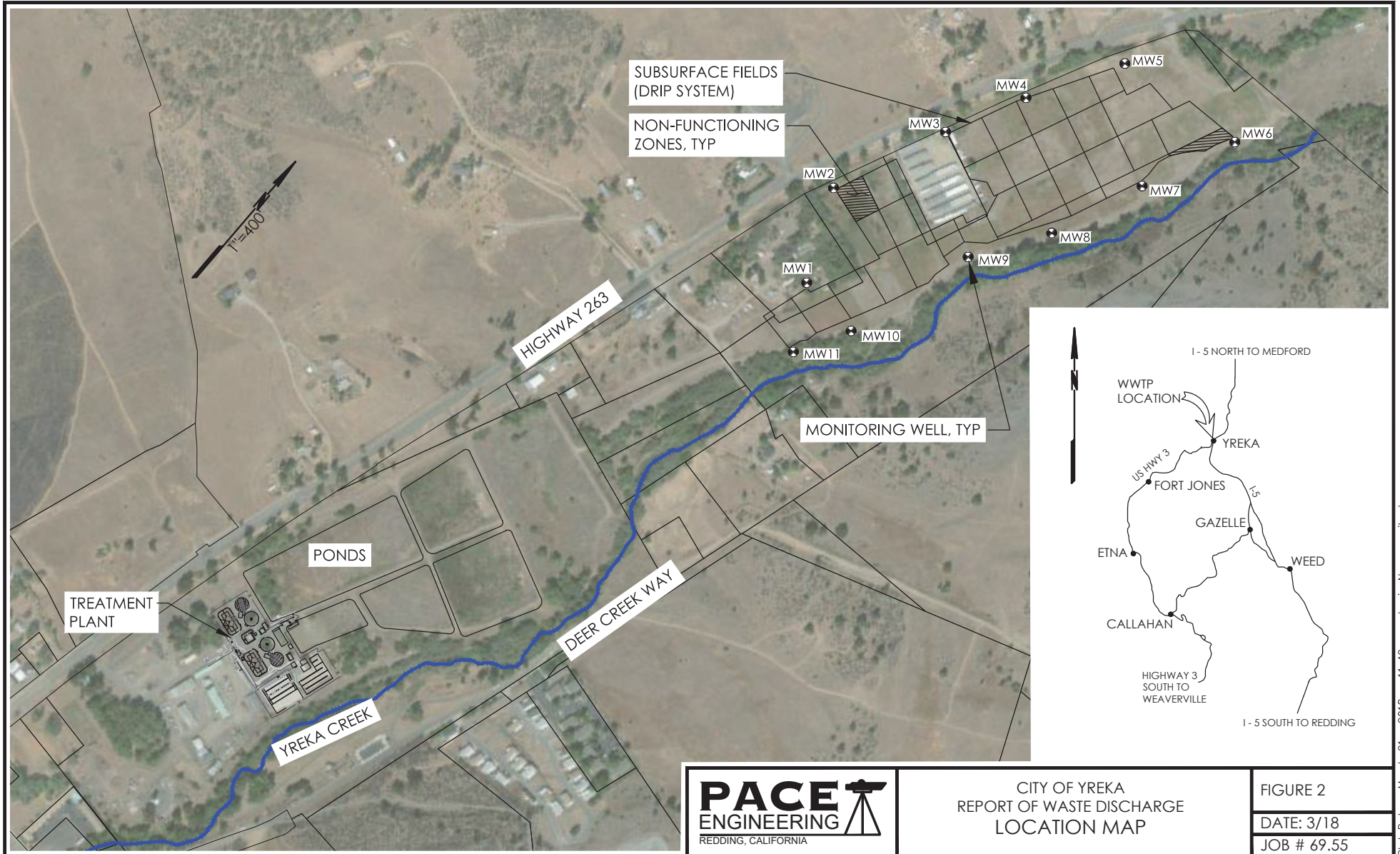
If the analytical result of a single grab sample is higher than the instantaneous maximum effluent limitation for a parameter, the Discharger will be considered out of compliance for that parameter for that single sample. Non-compliance for each sample will be considered separately (e.g., the results of two grab samples taken within a calendar day that both exceed the instantaneous maximum effluent limitation would result in two instances of non-compliance with the instantaneous maximum effluent limitation).

G. Bacteriological Limitations

The median is the central tendency concentration of the pollutant. The data set shall be ranked from low to high, ranking the ND concentrations lowest, DNQ determinations next, followed by quantified values. The order of the individual ND and DNQ determinations is not important. The median value is determined based on the number of data points in the data set. If the data set has an odd number of data points, then the median is the middle value. If the data set has an even number of data points, the median is the average of the two middle values, unless one or both points are ND or DNQ, in which case the median value shall be the lower of the two middle data points. DNQ is lower than a detected value, and ND is lower than DNQ.

Waste Discharge Requirements
City of Yreka CSD WWTF
Order No. R1-2021-0016

ATTACHMENT A - FACILITY LOCATION MAP



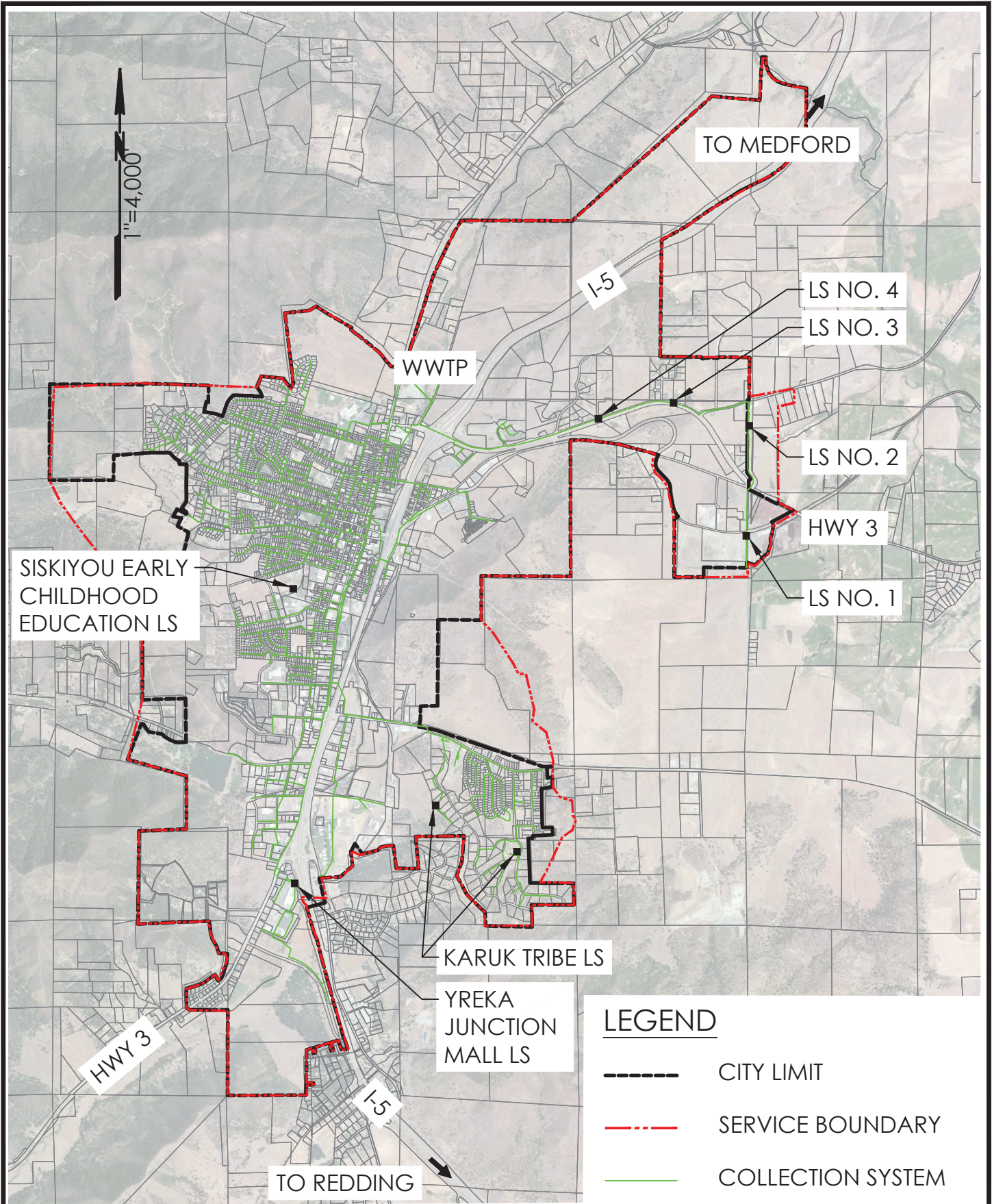
PACE
ENGINEERING
REDDING, CALIFORNIA

CITY OF YREKA
REPORT OF WASTE DISCHARGE
LOCATION MAP

FIGURE 2
DATE: 3/18
JOB # 69.55

Waste Discharge Requirements
City of Yreka CSD WWTF
Order No. R1-2021-0016

ATTACHMENT B - FACILITY SITE MAP



DATE
3/18

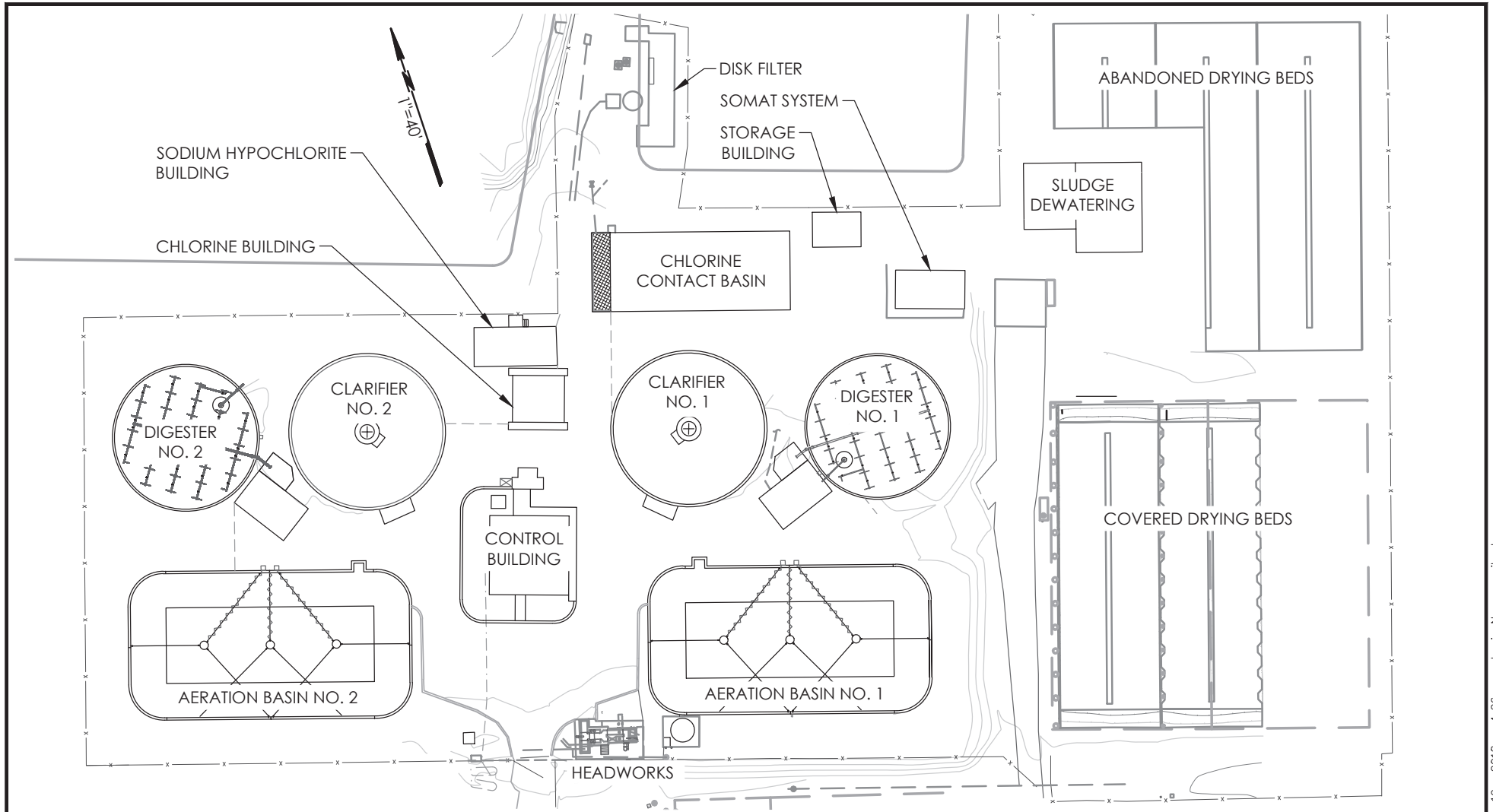


CITY OF YREKA
REPORT OF WASTE DISCHARGE
SERVICE AREA

FIGURE 1
JOB #69.55

Waste Discharge Requirements
City of Yreka CSD WWTF
Order No. R1-2021-0016

ATTACHMENT C - WWTF LAYOUT

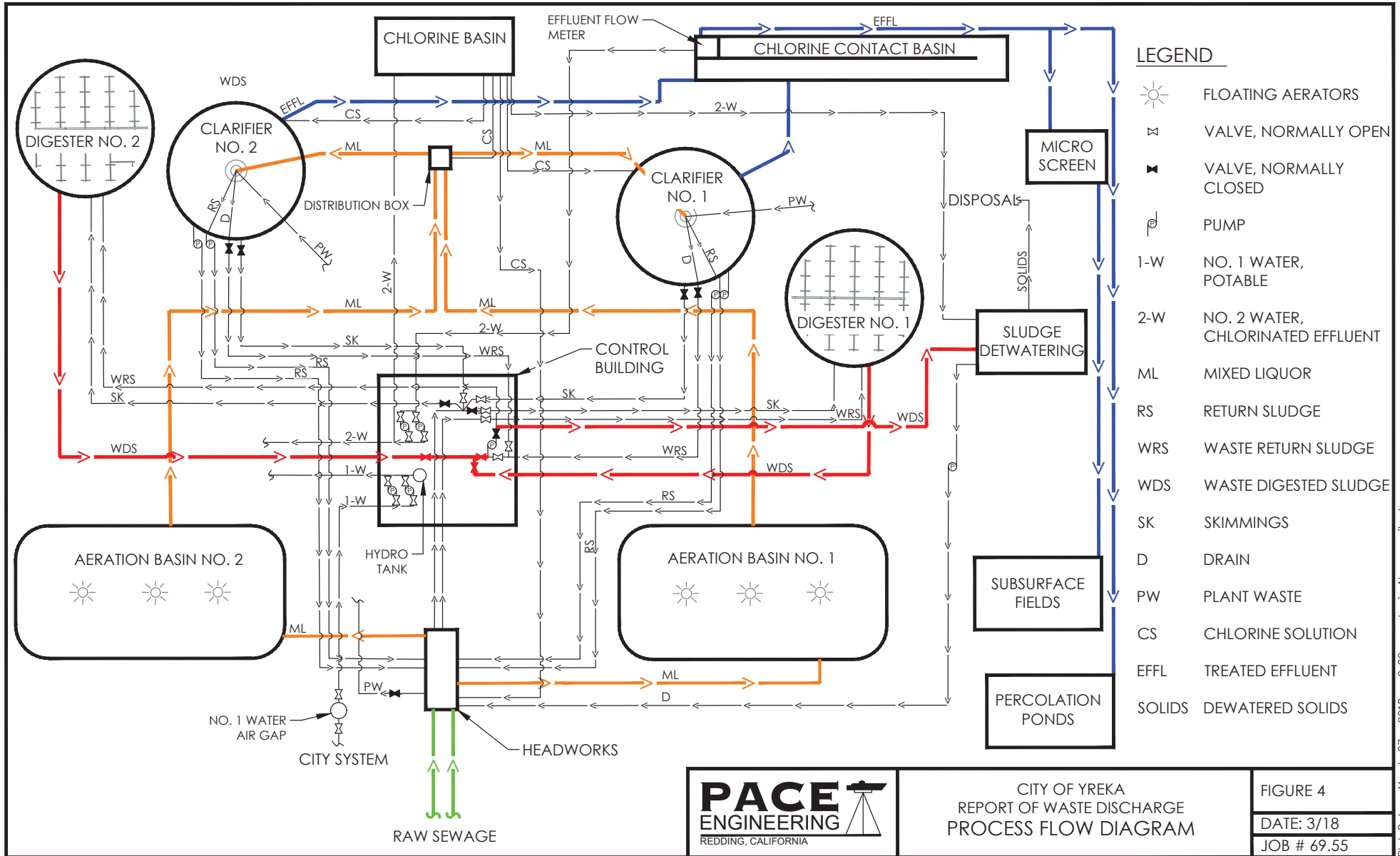


CITY OF YREKA
REPORT OF WASTE DISCHARGE
FACILITY MAP

FIGURE 3
DATE: 3/18
JOB # 69.55

Waste Discharge Requirements
City Of Yreka CSD WWTF
Order No. R1-2021-0016

ATTACHMENT D - FLOW SCHEMATIC



LEGEND

- FLOATING AERATORS
- VALVE, NORMALLY OPEN
- VALVE, NORMALLY CLOSED
- PUMP
- 1-W NO. 1 WATER, POTABLE
- 2-W NO. 2 WATER, CHLORINATED EFFLUENT
- ML MIXED LIQUOR
- RS RETURN SLUDGE
- WRS WASTE RETURN SLUDGE
- WDS WASTE DIGESTED SLUDGE
- SK SKIMMINGS
- D DRAIN
- PW PLANT WASTE
- CS CHLORINE SOLUTION
- EFFL TREATED EFFLUENT
- SOLIDS DEWATERED SOLIDS



CITY OF YREKA
 REPORT OF WASTE DISCHARGE
 PROCESS FLOW DIAGRAM

FIGURE 4
DATE: 3/18
JOB # 69.55

Plot Date: March 27, 2018 - 2:22 pm Login Name: pcibart
 File Name: M:\Land Projects\0069.55 Report of Waste Discharge\WWTP SIMPLIFIED PROCESS DIAGRAMNEW.dwg, Layout: 11x17

ATTACHMENT E - MONITORING AND REPORTING PROGRAM

California Water Code section 13267 authorizes the Regional Water Quality Control Board (Regional Water Board) to require technical and monitoring reports. This MRP establishes monitoring and reporting requirements, which are necessary to assure the discharges of waste that could impact water quality complies with waste discharge requirements and water quality objectives. This MRP may be modified, as necessary by the Executive Officer. Pursuant to Water Code section 13268, failure to submit the report(s) as described by this Order is a misdemeanor and may subject you to an administrative civil liability if the reports are not received by the deadline.

I. GENERAL MONITORING PROVISIONS

A. Wastewater Monitoring Provision

Composite samples may be taken by a proportional sampling device approved by the Executive Officer or by grab samples composited in proportion to flow. In compositing grab samples, the sampling interval shall not exceed 1 hour.

B. Supplemental Monitoring Provision

If the Discharger monitors any pollutant more frequently than required by this Order, the results of this monitoring shall be included in the calculation and reporting of the data submitted in the monthly and annual self-monitoring reports.

C. Laboratory Certification

Laboratories analyzing monitoring samples shall be certified by the State of California Environmental Laboratory Accreditation Program (ELAP), in accordance with Water Code section 13176, and must include quality assurance/quality control data with their reports. The Discharger may analyze pollutants with short hold times (e.g., pH, chlorine residual, settleable solids, EC, temperature etc.) in its on-site laboratory provided that the Discharger has standard operating procedures (SOPs) that identify quality assurance/quality control procedures to be followed to ensure accurate results.

D. Minimum Levels

Compliance and reasonable potential monitoring analyses shall be conducted using commercially available and reasonably achievable detection limits that are lower than the applicable effluent limitation. If no minimum level (ML) value is below the effluent limitation, the lowest ML shall be selected as the reporting level (RL).

E. Monitoring Equipment Provision

All monitoring and analysis instruments and devices used by the Discharger to fulfill this MRP shall be properly maintained and calibrated as recommended by the manufacturer to ensure their continued accuracy. The calibration interval for flow measurement devices shall not exceed 5 years.

F. Sample Documentation

All samples shall be representative of the volume and nature of the discharge or matrix of material sampled. The name of the sampler, sample type (grab or composite), time, date, location, bottle type, and any preservative used for each sample shall be recorded on the sample chain of custody form. The chain of custody form must also contain all custody information including date, time, and to whom samples were relinquished. If composite samples are collected, the basis for sampling (time or flow weighted) shall be approved by Regional Water Board staff.

G. Field Test Instruments

Field test instruments (such as those used to test pH, dissolved oxygen, and electrical conductivity) may be used provided that they are used by an ELAP certified laboratory or:

1. The user is trained in proper use and maintenance of the instruments;
2. The instruments are field calibrated prior to monitoring events at the frequency recommended by the manufacturer;
3. Instruments are serviced by the manufacturer or authorized representative at the recommended frequency; and
4. Field calibration reports are maintained and available for at least three years.

H. Duplicative Monitoring Requirements

If monitoring requirements listed below duplicate existing monitoring requirements under other orders including WDRs or waivers of WDRs, then duplication of sampling and monitoring activities are not required if the monitoring activity satisfies the requirements of this MRP. In addition to submitting the results under another order, the results shall be submitted in the reports required by this MRP.

I. Approved Test Methods

All monitoring must be conducted using approved test methods or other test methods specified in this MRP.

J. Sampling Method

Collecting composite samples is acceptable in most cases. Due to short holding times, bacteriological samples collected to verify disinfection effectiveness must be grab samples.

II. MONITORING LOCATIONS

The Discharger shall establish the following monitoring locations to demonstrate compliance with the discharge prohibitions, discharge specifications, and other requirements in this Order:

Table E-1. Monitoring Station Locations

Discharge Point Name	Monitoring Location Name	Monitoring Location Description
--	INF-001	Influent flume and sensor located at or prior to headworks.
--	EFF-001	Effluent monitoring location at chlorine contact basin.
001	EFF-002	Effluent monitoring location following treatment and chlorination prior to discharge to leach fields or disposal ponds.
--	LEACH-001	Visual observation of leach field.

III. MONITORING REQUIREMENTS

A. Influent

The Discharger shall measure and record the volume of influent wastewater and monitor influent at Monitoring Location INF-001 as follows:

Table E-2. Influent Flow – Monitoring Location INF-001

Parameter	Units	Sample Type	Minimum Sampling Frequency
Flow (Daily, Monthly Average)	mgd	Flow Sensor	Continuous
Biochemical Oxygen Demand (5-day @ 20°C)	mg/L	Grab	Monthly
Total Suspended Solids	mg/L	Grab	Monthly

B. Effluent Chlorine Contact Basin

The Discharger shall monitor the effluent chlorine residual at Monitoring Location EFF-001 as follows:

Table E-3. Effluent Chlorine Contact Basin – Monitoring Location EFF-001

Parameter	Units	Sample Type	Minimum Sampling Frequency
Chlorine, Total Residual	mg/L	Flow Sensor	Daily

C. Effluent

The Discharger shall measure and record the volume of effluent wastewater and monitor treated effluent at Monitoring Location EFF-002 as follows:

Table E-4. Effluent Monitoring – Monitoring Location EFF-002

Parameter	Units	Sample Type	Minimum Sampling Frequency
Flow (Daily, Monthly Average)	Mgd	Flow Sensor	Continuous
Biochemical Oxygen Demand (5-day @ 20°C)	mg/L	Grab	Weekly
Total Suspended Solids	mg/L	Grab	Weekly
Settleable Solids	ml/L	Grab	Weekly
pH	Standard Units	Grab	Weekly
Total Coliform Organisms	MPN/ 100 mL	Grab	Weekly
Nitrogen, Nitrate (as N)	mg/L	Grab	Monthly
Nitrogen, Total (as N)	mg/L	Grab	Monthly

D. Leach Field Monitoring

The Discharger shall monitor for the presence or absence of surfacing effluent at Monitoring Location LEACH-001:

Table E-5. Leach Field Monitoring – Monitoring Location LEACH-001

Parameter	Units	Sample Type	Minimum Sampling Frequency
Presence or Absence of Surfacing Effluent	Feet	Measured	Weekly

E. Groundwater Monitoring

Where groundwater monitoring wells are installed, the Discharger shall monitor groundwater in the groundwater monitoring wells as follows:

Table E-6. Groundwater Monitoring – Analytes and Frequency

Parameter	Units	Sample Type	Monitoring Point	Minimum Sampling Frequency
Depth to Groundwater	0.01 feet	Measured	MW-1 through MW-11	Monthly
Total Coliform Organisms	MPN/100mL	Grab	MW-2, MW-5, MW-6, MW-7, MW-9, MW-11	Quarterly
Nitrogen, Total (as N)	mg/L	Grab	MW-2, MW-5, MW-6, MW-7, MW-9, MW-11	Quarterly
Nitrogen, Nitrate (as N)	mg/L	Grab	MW-2, MW-5, MW-6, MW-7, MW-9, MW-11	Quarterly

Table E-7. Groundwater Monitoring – Monitoring Well Location and Descriptions

Monitoring Location Name	Monitoring Location Description
MW-1, MW-2, MW-3, MW-4, MW-5	Groundwater monitoring wells located northwest of the disposal field between the disposal field and Highway 263.
MW-6, MW-7, MW-8, MW-9, MW-10, MW-11	Groundwater monitoring wells located southeast of the disposal field between the disposal field and Yreka Creek.

F. Surface Water Monitoring

The Discharger shall sample surface water in Yreka Creek at established sampling stations located upstream of the Facility and downstream of the subsurface drip disposal field as follows:

Table E-8. Surface Water Monitoring – Yreka Creek

Parameter	Units	Sample Type	Minimum Sampling Frequency
Total Coliform Organisms	MPN/100mL	Grab	Quarterly
Nitrogen, Total (as N)	mg/L	Grab	Quarterly
Nitrogen, Nitrate (as N)	mg/L	Grab	Quarterly

IV. REPORTING REQUIREMENTS

A. Self-Monitoring Reports (SMRs)

1. The Discharger shall submit monthly SMRs including the results for all monitoring specified in this MRP. If the Discharger monitors any pollutant more frequently than required by this Order, the results of this monitoring shall be included in the calculations and reporting of the data submitted in the SMR.
2. Monthly SMRs shall be submitted by the first day of the second calendar month, following the month of sampling. All monitoring results shall include complete laboratory data sheets for each analysis and be submitted in

conjunction with the monthly SMR. Annual summary reports shall be submitted by March 1st each year.

3. Monitoring periods for all required monitoring shall be completed according to the following schedule:

Table E-9. Monitoring Periods and Reporting Schedule

Sampling Frequency	Monitoring Period Begins On	Monitoring Period
Daily	Order Effective Date	(Midnight through 11:59 PM) or any 24-hour period that reasonably represents a calendar day for purposes of sampling.
Weekly	Sunday following order effective date or on order effective date if on a Sunday	Sunday through Saturday
Monthly	First day of calendar month following order effective date or on order effective date if that date is first day of the month	1 st day of calendar month through last day of calendar month
Quarterly	Closest of January 1, April 1, July 1, or October 1 following (or on) order effective date	January through March April through June July through September October through January
Annually	January 1 following (or on) order effective date	January 1 through December 31

4. The Discharger shall report with each sample result the applicable ML, the RL and the current MDL, as determined by the procedure in Standard Methods.
5. The Discharger shall report the results of analytical determinations for the presence of chemical constituents in a sample using the following reporting protocols:
 - a. Sample results greater than or equal to the reported ML shall be reported as measured by the laboratory (i.e., the measured chemical concentration in the sample).
 - b. Sample results less than the RL, but greater than or equal to the laboratory's MDL, shall be reported as "Detected, but Not Quantified," or DNQ. The estimated chemical concentration of the sample shall also be reported.

documents. The guidelines for electronic submittal of documents can be found on the [Regional Water Board website](https://www.waterboards.ca.gov/northcoast/publications_and_forms/available_documents/pdf/2014/ECM_Letter-Guidelines.pdf).
(https://www.waterboards.ca.gov/northcoast/publications_and_forms/available_documents/pdf/2014/ECM_Letter-Guidelines.pdf)

At any time during the term of this permit, the Regional Water Board may notify the Discharger to electronically submit both technical and Self-Monitoring Reports (SMRs) to the State Water Board's GeoTracker database in searchable Portable Document Format (pdf). In addition, analytical data will be required to be uploaded to the GeoTracker database under a site-specific global identification number that will be assigned to the Discharger. Information on the GeoTracker database is provided on the [State Water Board website](https://www.waterboards.ca.gov/resources/data_databases/groundwater.html).

(https://www.waterboards.ca.gov/resources/data_databases/groundwater.html)

B. Other Reports

1. **Annual Report.** The Discharger shall submit an annual report, as per section IV.A.6.C, to the Regional Water Board for each calendar year. The report shall be submitted by March 1 of the following year. The report shall, at a minimum, include the following:
 - a. **Monitoring Data Summaries.** Both tabular and, where appropriate, graphical summaries of the monitoring data and disposal records from the previous year. If the Discharger monitors any pollutant more frequently than required by this Order, the results of this monitoring shall be included in the calculation and report of the data submitted in the SMR.
 - b. **Compliance Reporting.** A comprehensive discussion of the Facility's compliance (or lack thereof) with all effluent limitations and other WDRs, and the corrective actions taken or planned, which may be needed to bring the discharge into full compliance with the Order.
 - c. **Solids Reporting.** A summary report of solids pumping, handling and disposal. If the Discharger is required to monitor sludge prior to final disposal, the results of this monitoring shall be included in the summary report.
2. **Source Control Activity Report.** The Discharger shall submit a Source Control Activity Report, as per MRP section IV.A.6.C, to the Regional Water Board for each calendar year. The report shall describe source control activities performed by the Discharger during the calendar year, as required by General Provision VIII.F of the Order, including:

- a. A copy of any source control standards;
- b. A description of any waste hauler permit system;
- c. A summary of compliance and enforcement activities during the past year. The summary shall include the names and addresses of any industrial or commercial users under surveillance by the Discharger, an explanation of whether they were inspected, sampled, or both, the frequency of these activities at each user, and the conclusions or results from the inspection or sampling of each user.

C. Spill Notification

1. **Spills and Unauthorized Discharges.** Information regarding all spills and unauthorized discharges (except SSOs) that may endanger health or the environment shall be provided verbally to the Regional Water Board ³ within 24 hours from the time the Discharger becomes aware of the circumstances and a written report shall also be provided within five (5) days of the time the Discharger becomes aware of the circumstances of the spill or unauthorized discharge.

Information to be provided verbally to the Regional Water Board includes:

- a. Name and contact information of caller;
- b. Date, time and location of spill occurrence;
- c. Estimates of spill volume, rate of flow, and spill duration, if available and reasonably accurate;
- d. Surface water bodies impacted, if any;
- e. Cause of spill, if known at the time of the notification;
- f. Cleanup actions taken or repairs made at the time of the notification;

³. The contact number of the Regional Water Board during normal business hours is (707) 576-2220. After normal business hours, spill reporting to the California Governor's Office of Emergency Services Warning Center (CalOES) will satisfy the 24 hour spill reporting requirement for the Regional Water Board. The contact number for spill reporting for the CalEMA is (800) 852-7550.

