



---

## North Coast Regional Water Quality Control Board

To: Mona Dougherty

From: Kate Hawken

Date: August 24, 2023

Subject: Inspection Report for August 1, 2023, Warrant Inspection of Trinity County Assessor's Parcel Number 019-650-016

File: Cannabis Program Inspections, Trinity County, Rafael Iraheta, CIWQS Place ID 889947

### Property Information

County: Trinity

APN: 019-650-016

Owner: Rafael Iraheta

Size: 3.56 acres

Watershed: Middle South Fork Trinity River; Cal Water 106.23; HUC-12 180102120401

Clean Water Act Section 303(d) Listings: Sedimentation/ Siltation and Temperature

TMDLs: 1998 U.S. Environmental Protection Agency South Fork Trinity River and Hayfork Creek Sediment Total Maximum Daily Loads

Regulatory status with the Regional Water Board  
Not enrolled

### Inspection information

Date: August 1, 2023

---

HECTOR BEDOLLA, CHAIR | VALERIE QUINTO, EXECUTIVE OFFICER

5550 Skylane Blvd., Suite A, Santa Rosa, CA 95403 | [www.waterboards.ca.gov/northcoast](http://www.waterboards.ca.gov/northcoast)

Type: Warrant

Attendance:

Kate Hawken, North Coast Regional Water Quality Control Board  
Matthew Mitchell and Jacqueline Matthews, California Department of Fish and Wildlife  
Rikki Townzen, Trinity County Department of Environmental Health  
Law enforcement personnel

Background/Objective:

Inspection objectives for Regional Water Board staff included observing site development and activities and identifying and assessing onsite features or conditions that are causing or may cause adverse impacts to the quality and beneficial uses of receiving waters, including surface and ground water.

Inspection Map

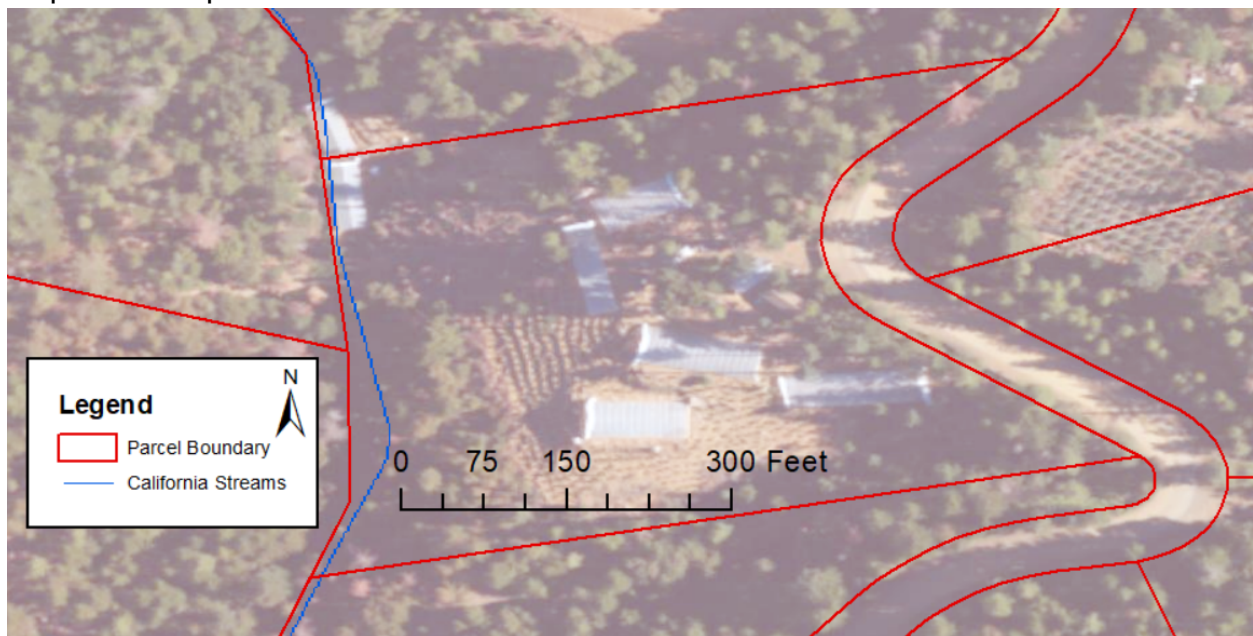


Figure 1: Map of property with parcel boundaries, and Glade Creek on west side.

Inspection Observations

Starting at the top of the property, on the east side, I observed a well, generators, and gas cans (Photo 1). Moving downhill and west I observed bare dirt terraces with cannabis plants in the ground (Photo 2). I observed irrigation runoff from the plants discharging towards Glade Creek (Photo 3). I observed an outhouse discharging human waste to land (Photo 4). I observed multiple burn piles containing plastics and metals (Photos 5 and 6). At the base of the property, I observed two hoop houses constructed partially in the creek, with a gas can nearby and barrels containing dark liquids (Photo 7). I observed fill, rock, and trash placed in the creek, constricting the channel width to 6 feet (Photos 8 and 9). Upstream, I observed more cultivation related waste, and measured a less disturbed channel width of 10 feet (Photo 10). I measured the fill berm

in the creek to be approximately 75 feet long, with depths ranging from half a foot to 3 feet. I left a field notice on the property with the warrant (Photo 11).

A comparison of conditions observed on the site with categories of activities typically associated with water quality concerns at cannabis cultivation sites:

1. Site maintenance, erosion control and drainage features: I observed bare dirt throughout the property with no erosion control practices in place.
2. Stream crossing maintenance and improvement: I did not observe water quality issues associated with stream crossings.
3. Riparian and wetland protection and management: I observed fill, hoop houses, cannabis plants, and trash in Glade Creek and within its setbacks.
4. Spoils management: I did not observe water quality issues associated with spoils management.
5. Water storage and use: I did not observe water quality issues associated with water storage and use.
6. Irrigation runoff: I observed irrigation runoff from terraced plants perched above Glade Creek.
7. Fertilizers and soil amendments: I observed open barrels full of dark liquids.
8. Pesticides: I did not observe water quality issues associated with pesticides.
9. Petroleum products and other chemicals: I observed generators stored without adequate secondary containment, and gas cans in the setbacks to Glade Creek.
10. Cultivation-related wastes: I observed waste in and adjacent to Glade Creek.
11. Refuse and human waste: I observed refuse, including burn piles, throughout the property. I observed an outhouse discharging human waste to land.

#### Recommendations

1. If you and/or your tenant(s) plan to continue commercial cannabis cultivation, enroll for coverage under the State Water Board's Order WQ 2019-0023-DWQ, General Waste Discharge Requirements and Waiver of Waste Discharge Requirements for Discharges of Waste Associated with Cannabis Cultivation Activities.
2. Relocate all cannabis cultivation activities, supplies, and trash outside of the riparian setbacks (50 feet from Class III, 100 feet from Class II, 150 feet from

Class I). Use hand tools to dismantle the hoop houses in Glade Creek and to haul all materials out of the riparian setbacks.

3. Retain a qualified professional to assess and stabilize the bare dirt terraces, and fill placed along Glade Creek, and apply for a 401 Water Quality Certification prior to work in a stream.
4. Store and contain all chemicals, including fertilizers and petroleum products, properly to prevent spillage and potential for migration/transport into receiving waters. Store generators in an area with secondary containment.
5. Discontinue burning of trash. Regularly contain and dispose of all waste/ trash at a licensed transfer site. Remove trash from creek.
6. Discontinue use of outhouse discharging to ground. Adhere to Trinity County regulations on human waste management.

**Photos** (taken by Kate Hawken on August 1, 2023)



Photo 1: Well, generators, and gas cans without secondary containment.



Photos 2 and 3: Terraces with cannabis plants in the ground, and irrigation runoff.



Photo 4: Outhouse discharging human waste to land.



Photos 5 and 6: Burn piles containing domestic and cultivation related waste.

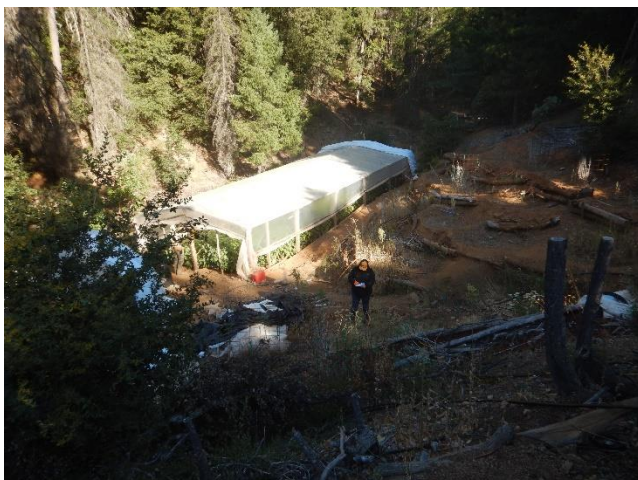


Photo 7: Looking downhill at hoop houses in Glade Creek.



Photos 8 and 9: Fill, and trash including plastic pipes, plastic bottles, metal cages, and metals cans in Glade Creek.



Photo 10: View from upstream of cultivation related waste, and hoop houses in creek.

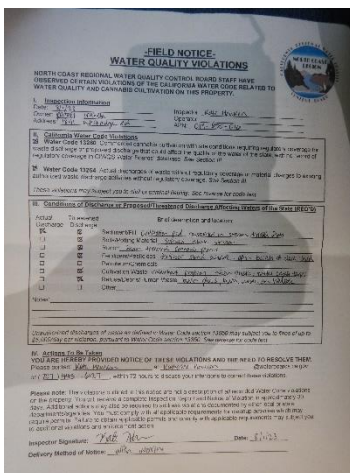


Photo 11: I left a field notice on the property with the warrant.