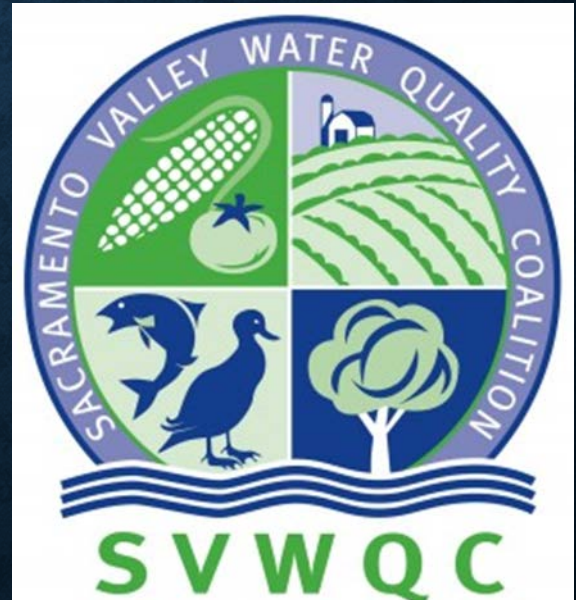




NCWA
Northern California Water Association

THE SACRAMENTO VALLEY

A Proactive Partnership Protecting Water Quality





OVERVIEW

Introduction

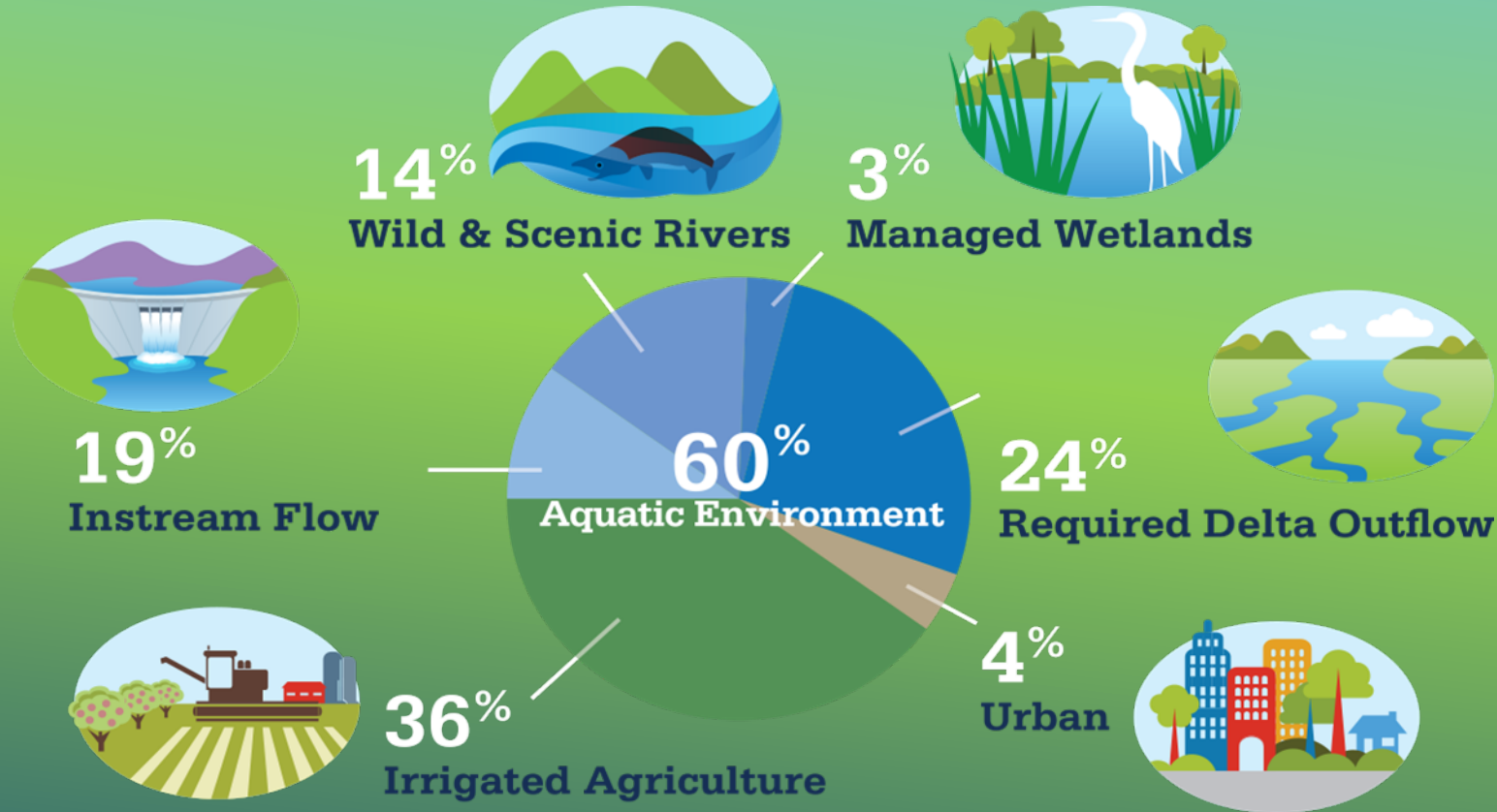
Larry Domenighini, President of Colusa Glenn Subwatershed Program, former Glenn County Farm Bureau President and Willows City Councilmember and Mayor – 1100 acres of field and row crops and rice.

Tami Humphry, Executive Director, Northeastern California Water Association, 3200 acres of irrigated pasture, orchard grasses, and wild rice.

OVERVIEW

- The Landscape - Agricultural and Water Quality
- Generations of Stewardship Before Regulation
- The Results – Surface and Groundwater
- Expenses, Costs and Consequences
- Questions, Comments and Recommendations

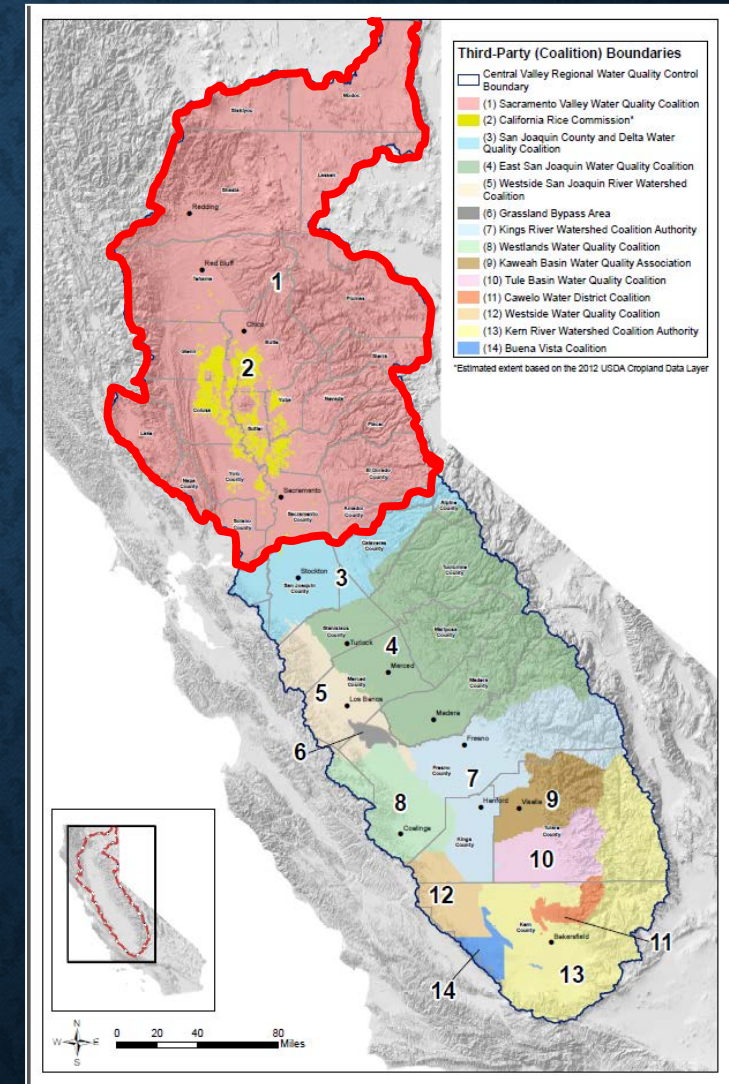
A UNIQUE NATURAL AND WORKING LANDSCAPE



This water produces food for consumption in urban areas while also providing terrestrial and aquatic habitat for a multitude of species.

IRRIGATED LANDS IN SACRAMENTO VALLEY

- ~1.3 million irrigated acres
- ~8150 owners and operators
- ~\$15 million invested in protecting water quality



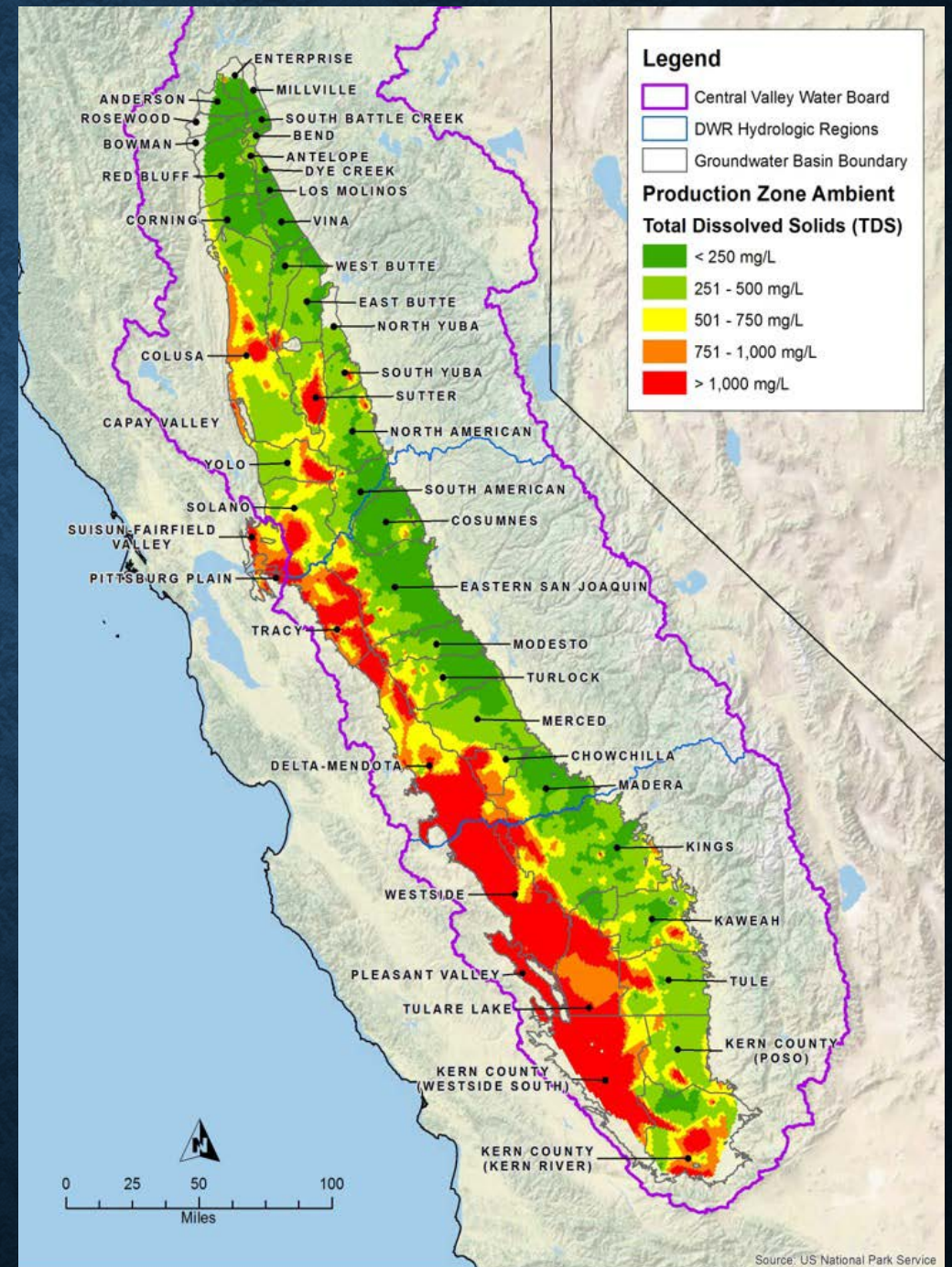
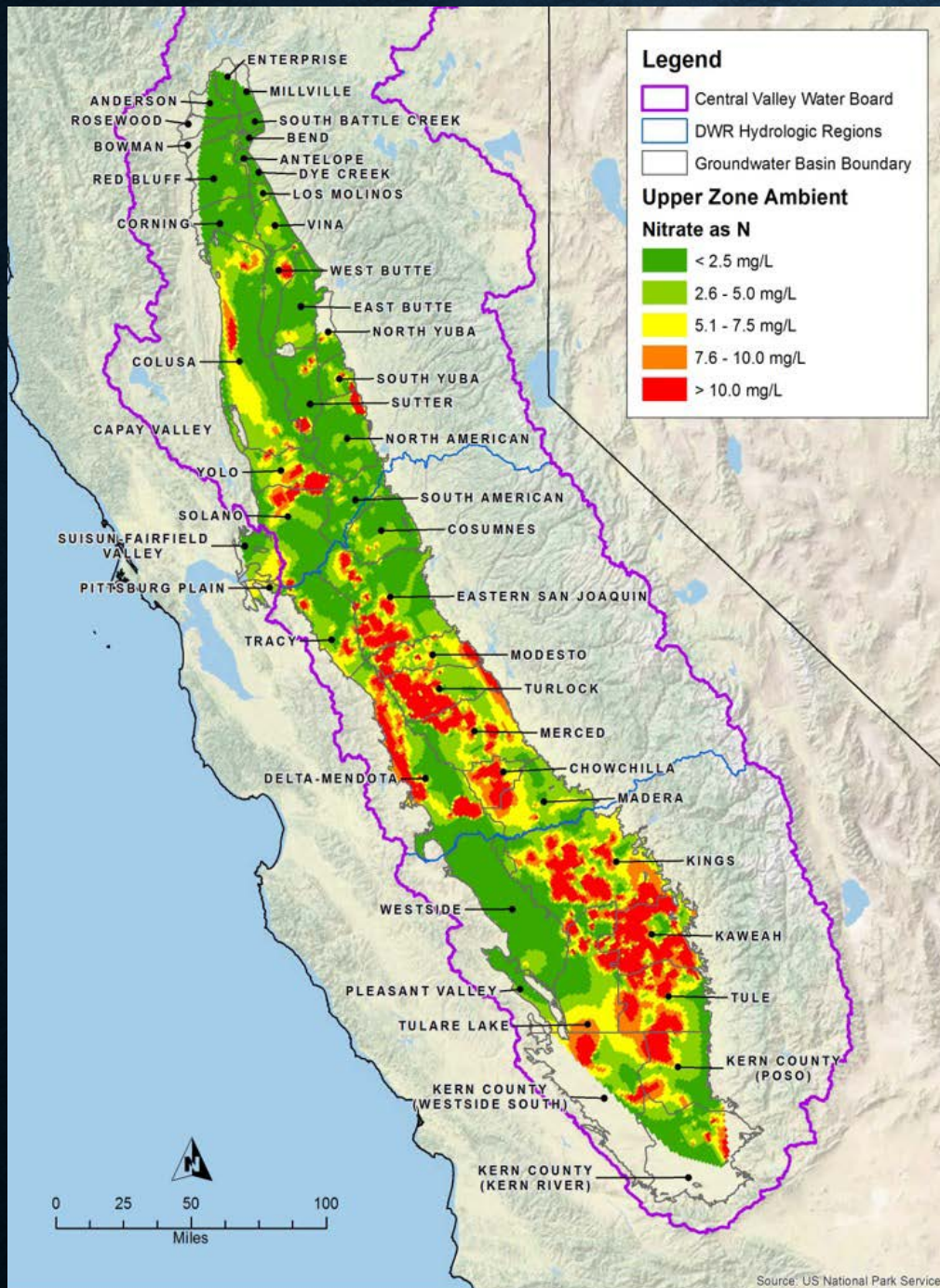
MOST ACREAGE, BUT NOT WATER QUALITY ISSUES

- 0.3%
- 2.7%
- Much of the ~130,000 acres of irrigated pasture don't apply pesticides or nitrogen

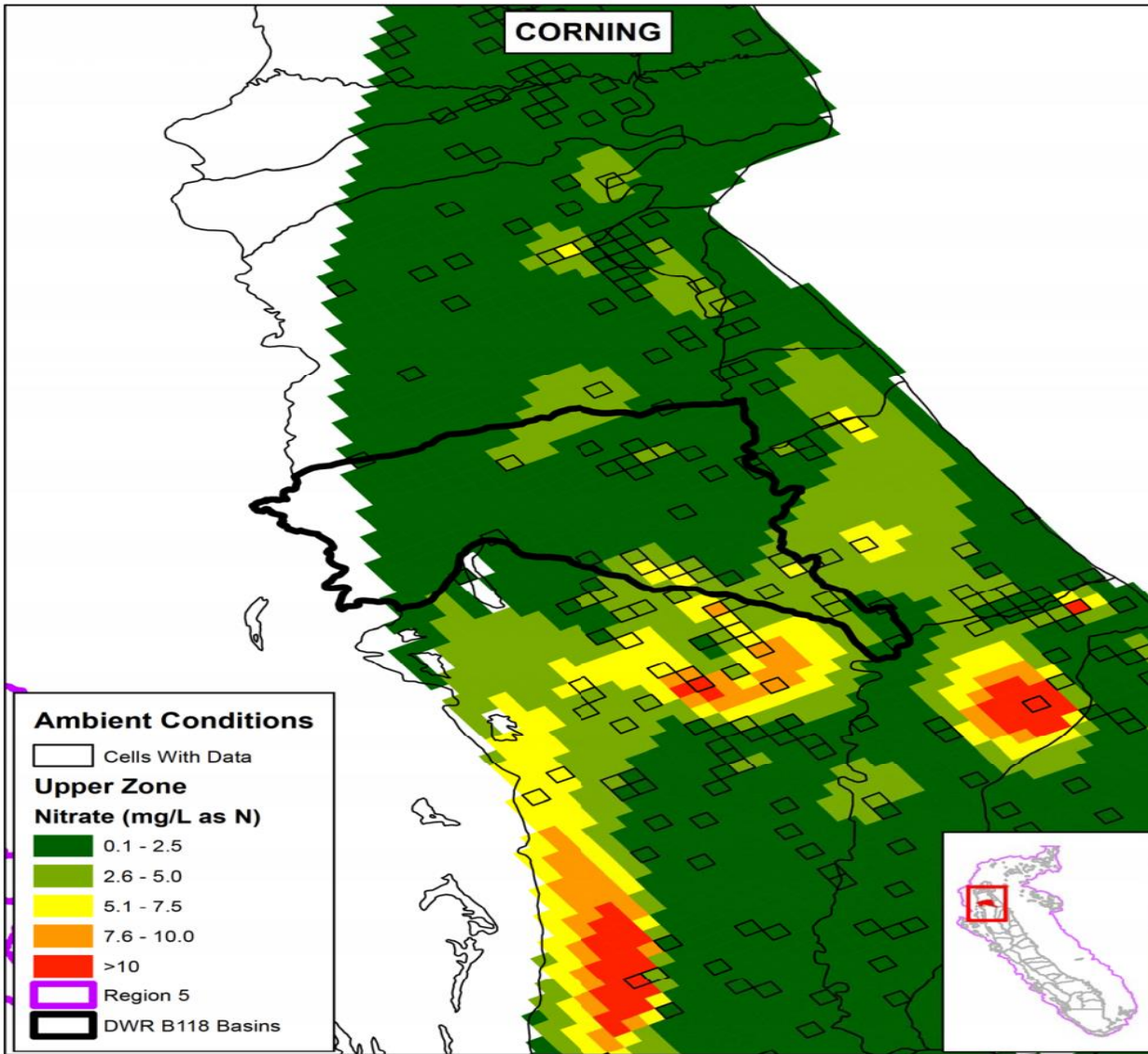
MOST ACREAGE, BUT NOT WATER QUALITY ISSUES

- The Sierra Nevada foothills have no groundwater basins
- Groundwater Basins Coast Range and Intermountain region are designated low priority basins by DWR and have no groundwater quality impairment based on numerous technical studies
- In fact, much of the Sacramento Valley has excellent SURFACE and GROUNDWATER Quality

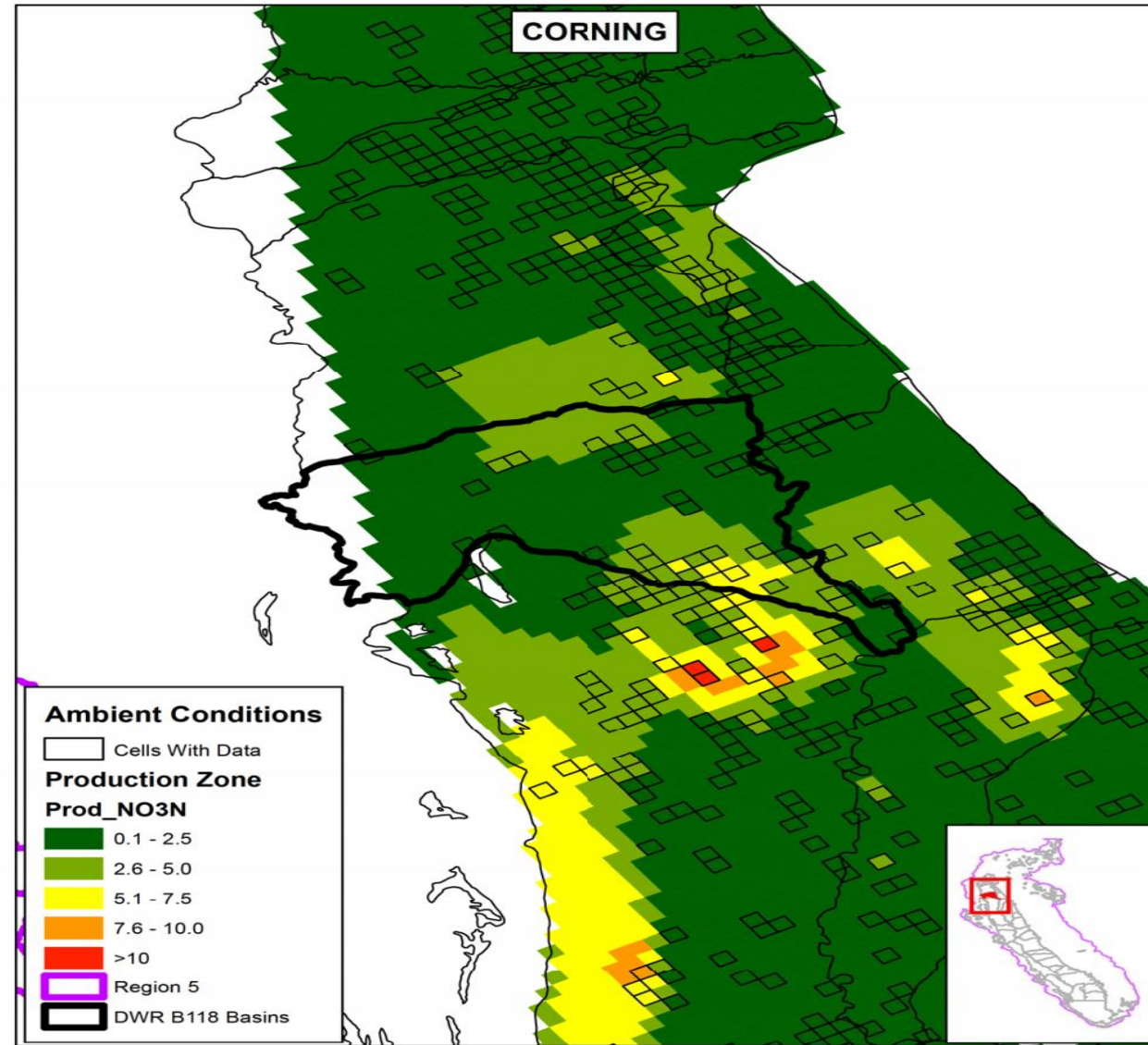




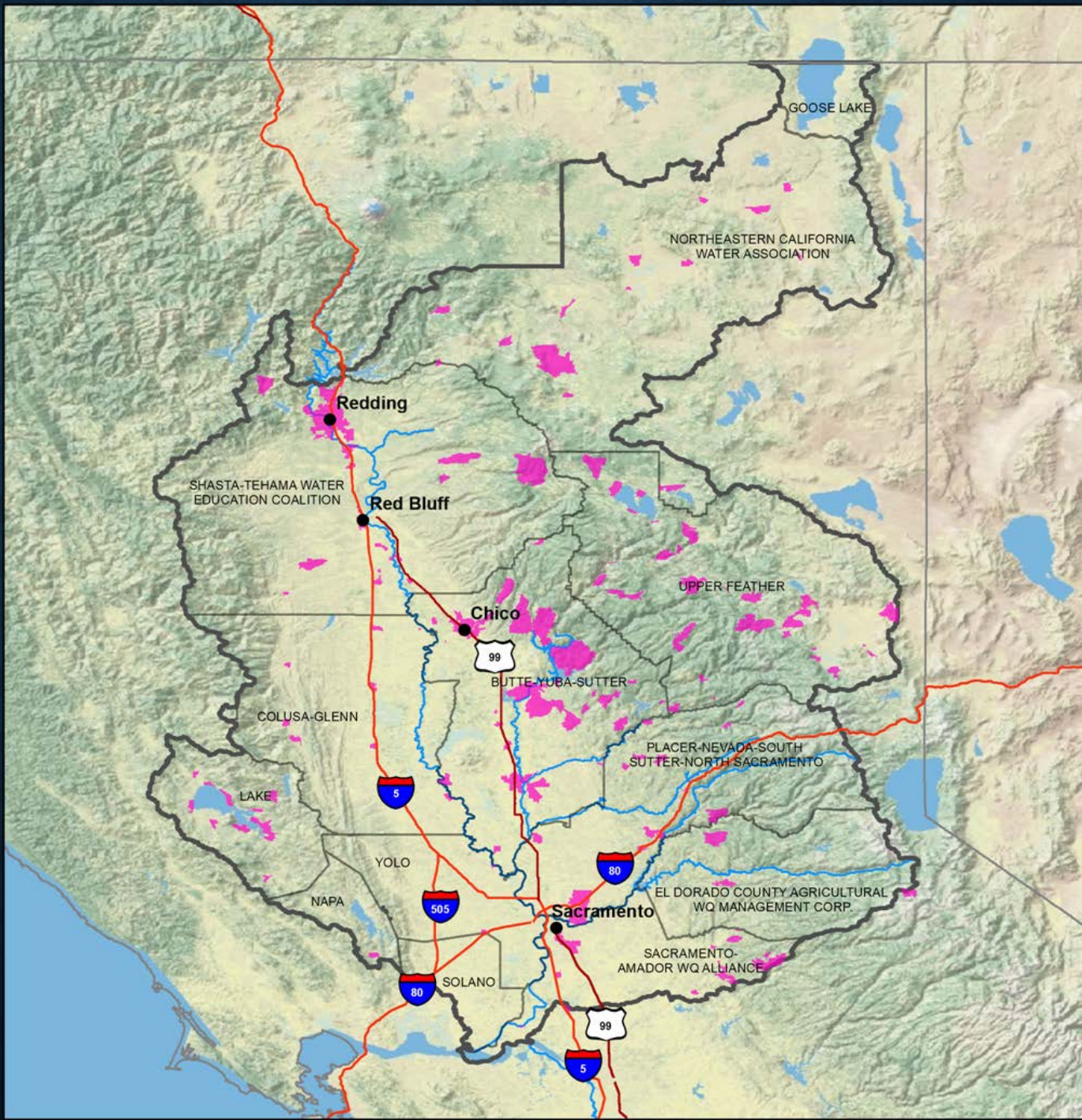
Ambient Nitrate Concentrations Upper Zone: Corning Subbasin



Attachment Figure 12



Attachment Figure 94



THE STEWARDSHIP

- 15 years of partnership in the Sacramento Valley

NCWA + Farm Bureaus + Resource Conservation Districts + Agricultural Commissioners + Cooperative Extension Crop Advisors + Landowners

- Stewardship way of life predates regulations.
- Sharing the hydrogeological footprint and groundwater basins with the California Rice Commission, the Sacramento Valley Water Quality Coalition is over 8149 owners and operators of irrigated lands, agronomically and ecologically sustainably cultivates over 1.3 million irrigated acres.
- Almond and walnut orchards comprise the largest crops grown.

SUCCESS STORIES OF EDUCATION

- Glenn County Surface Water Stewardship Program (mid-90s)
- Walker Creek Success Story

EDUCATION NOT REGULATION IMPROVES WATER QUALITY



FAMILY FARMS PRACTICING STEWARDSHIP OF THE LAND

- Multiple Generations have farmed in the Sacramento Valley and Upper Watersheds since the mid-to-late 1800s
- Pasture/Hay/Grain comprise 27% a significant amount grown with no nitrogen applications in areas where no groundwater basins exist





EXPENSES, COSTS AND CONSEQUENCES

- An estimated \$100,000,000 in expenses
- An increased burden for Members and Coalitions puts Water Quality at risk.
- Puts ecosystems at risk.
- Puts Family Farms at risk.



QUESTIONS, COMMENTS AND RECOMMENDATIONS

- Why Precedential?
 - Ag Operations NOT the same Statewide
 - Groundwater Quality Conditions are NOT the same Statewide
- Why require collection of MORE information, MORE often at MORE cost?
 - Do NOT view ILRP Costs in Isolation – other costs all come from the same pocket
- Follow Sustainable Groundwater Act approach of local action NOT mandating statewide solution.
- Utilize CV SALTS Toolbox.

**THANK YOU FOR CONSIDERING OUR
COMMENTS**