

GEOTRACKER GAMA

SEARCH FOR WELLS

Wells With Results

Any Chemical

All Years

Go

473 WELLS FOUND (64.69% ABOVE COMPARISON CONCENTRATION)

The list comparison concentration is 100.00 mg/L. The list comparison concentration is 100.00 mg/L.

DATASETS

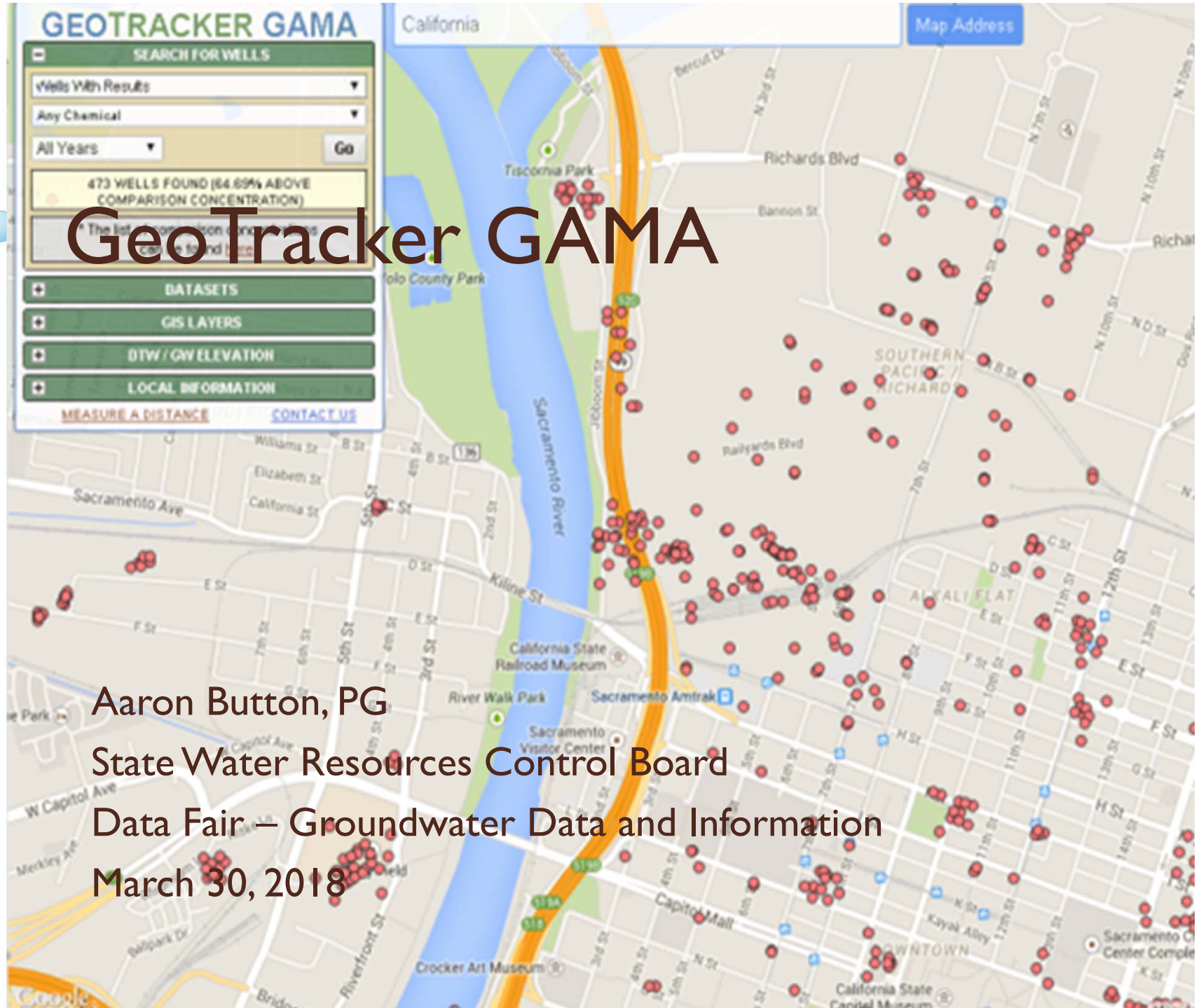
GIS LAYERS

DTW / GW ELEVATION

LOCAL INFORMATION

[MEASURE A DISTANCE](#) [CONTACT US](#)

GeoTracker GAMA



Aaron Button, PG
State Water Resources Control Board
Data Fair – Groundwater Data and Information
March 30, 2018



Presentation Overview

- What is GeoTracker GAMA
- Key Elements of GeoTracker GAMA
- GAMA future developments
- Questions



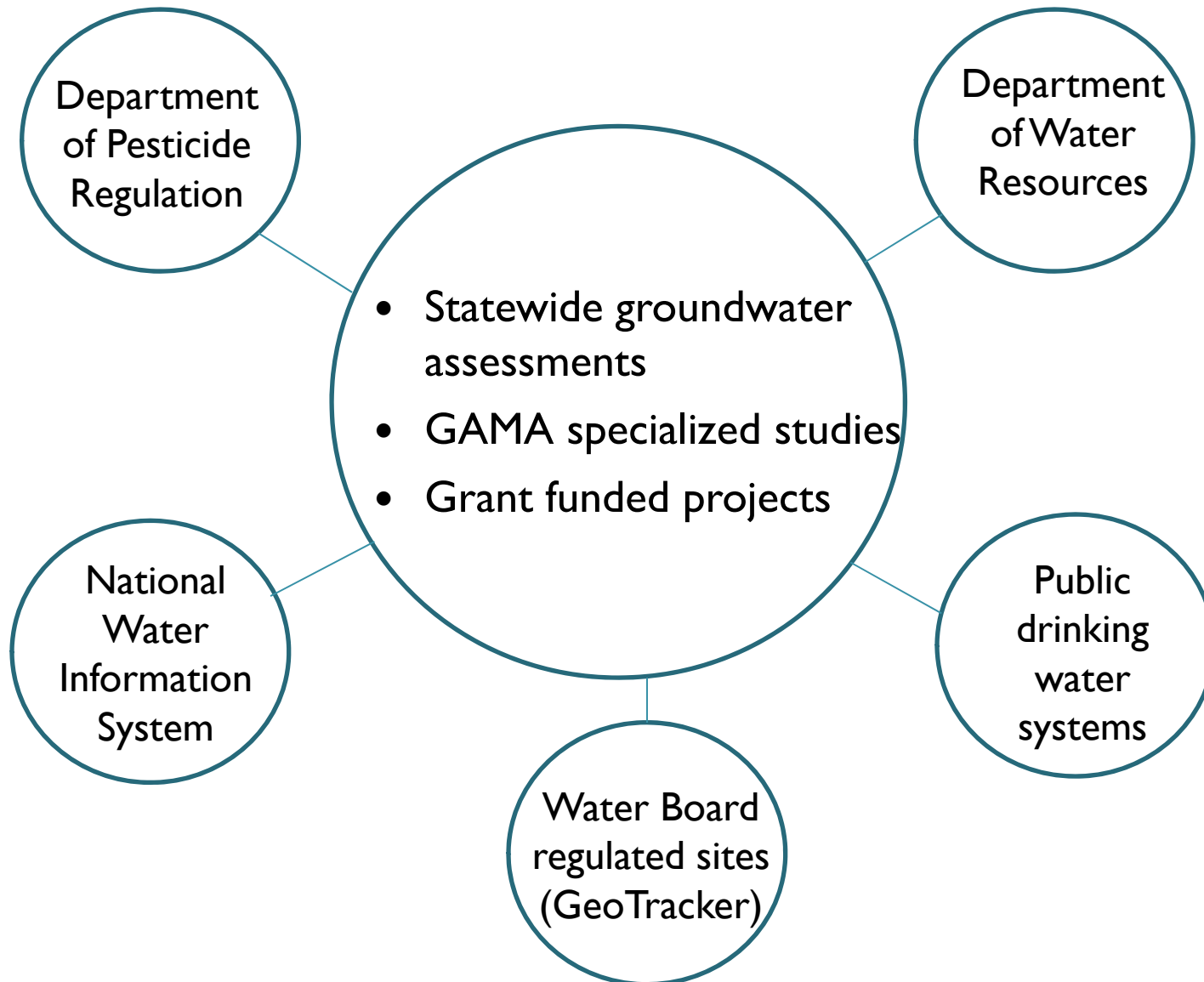
GeoTracker GAMA

- Integrates and displays water quality data
- Standardized datasets values
- Offers more than 82 million analytical records from over 285,000 wells
- Provides basic analytical tools and reporting features

STATE WATER RESOURCES CONTROL BOARD
GEOTRACKER GAMA
GROUNDWATER AMBIENT MONITORING AND ASSESSMENT



GeoTracker GAMA Data Sources



Important Details

- Analytical data standardized between datasets
 - All data uses one standard list of values
- Datasets updated weekly to yearly depending on data owner
- Well locations available for most datasets (excluding Department of Pesticide Regulation)

Available Groundwater Information

- Well locations
- Chemical data
- Groundwater elevation data
- Soil stratigraphy

GEOTRACKER GAMA

Select Data to Display

Select a Data Category:

- Groundwater Well Locations
- Wells with Groundwater Chemical Data
- Groundwater Elevation / Depth Data

Select Datasets:

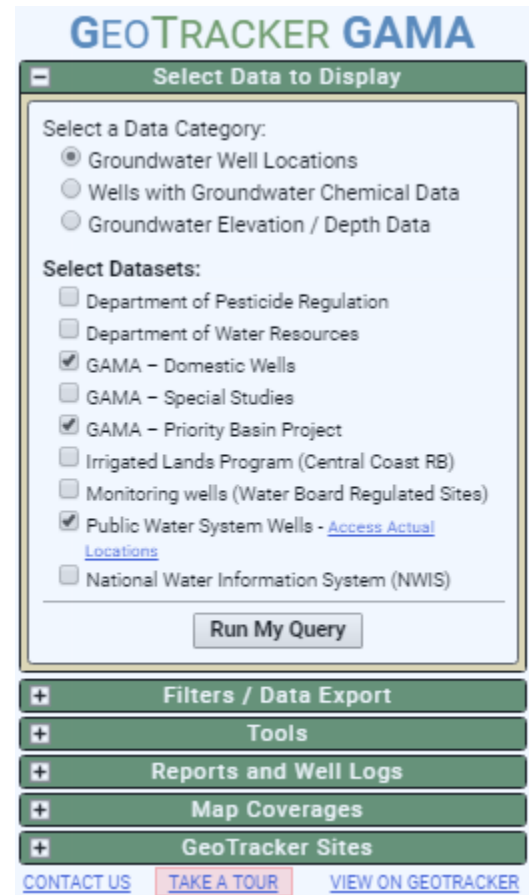
- Department of Pesticide Regulation
- Department of Water Resources
- GAMA - Domestic Wells
- GAMA - Special Studies
- GAMA - Priority Basin Project
- Irrigated Lands Program (Central Coast RB)
- Monitoring wells (Water Board Regulated Sites)
- Public Water System Wells - [Access Actual Locations](#)
- National Water Information System (NWIS)

[CONTACT US](#) [TAKE A TOUR](#) [VIEW ON GEOTRACKER](#)



Typical Data Uses

- Groundwater well surveys
- Statewide groundwater assessments
- Local groundwater quality
- Trend data



GEOTRACKER GAMA

Select Data to Display

Select a Data Category:

- Groundwater Well Locations
- Wells with Groundwater Chemical Data
- Groundwater Elevation / Depth Data

Select Datasets:

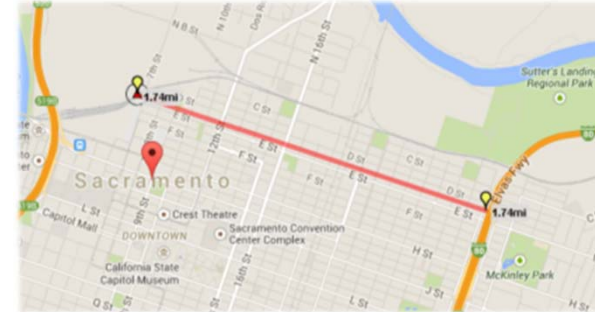
- Department of Pesticide Regulation
- Department of Water Resources
- GAMA - Domestic Wells
- GAMA - Special Studies
- GAMA - Priority Basin Project
- Irrigated Lands Program (Central Coast RB)
- Monitoring wells (Water Board Regulated Sites)
- Public Water System Wells - [Access Actual Locations](#)
- National Water Information System (NWIS)

[CONTACT US](#) [TAKE A TOUR](#) [VIEW ON GEOTRACKER](#)

Basic Functions

Consistent with
Google Maps

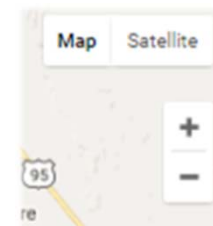
- Zoom
- Street View
- Various base maps
- Right-click tools
- Distance measuring



Center map here

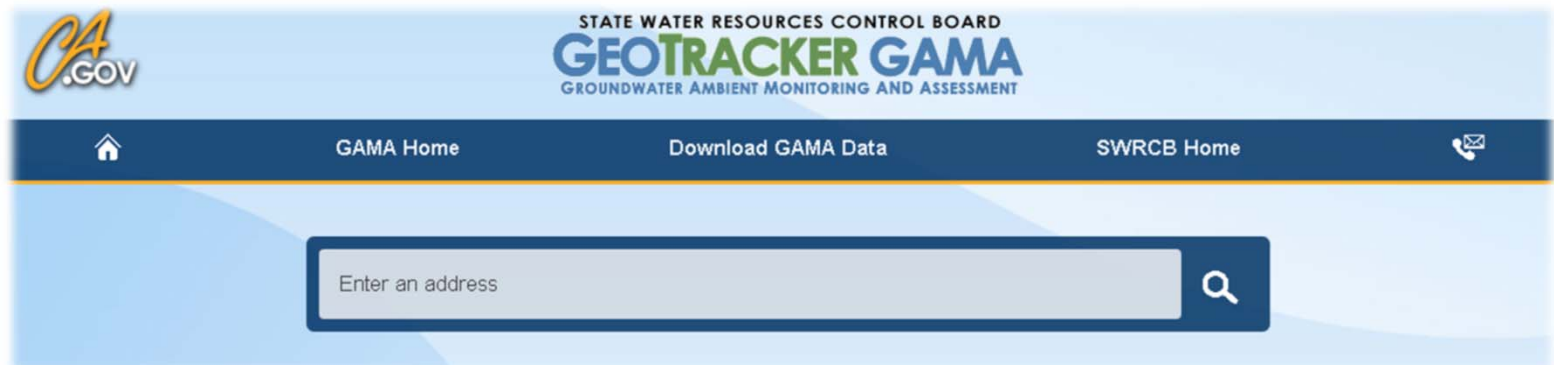
Identify Lat / Lng

Identify Elevation



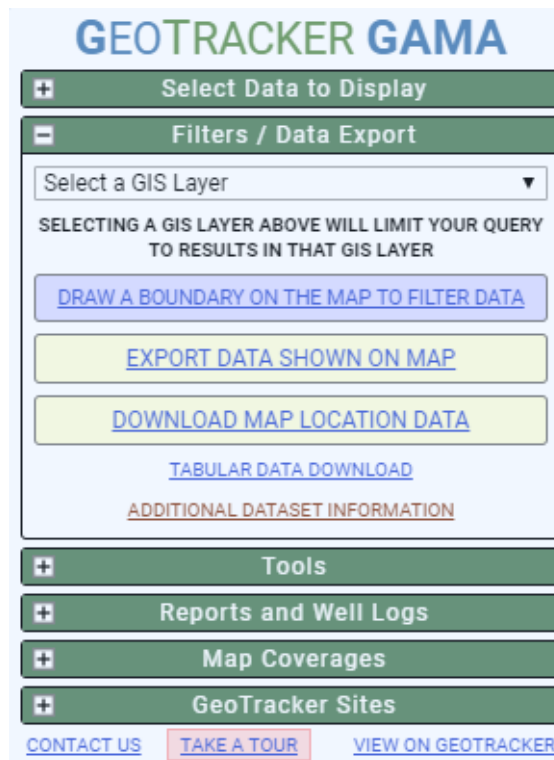
Getting Started

- Visit geotracker.waterboards.ca.gov/gama/
- Signup for a Public Supply Well access account
 - <https://geotracker.waterboards.ca.gov/securewells/password/>



Accessing Data

- System filters - based upon selected GIS coverages
- Map filters - based on selected map area



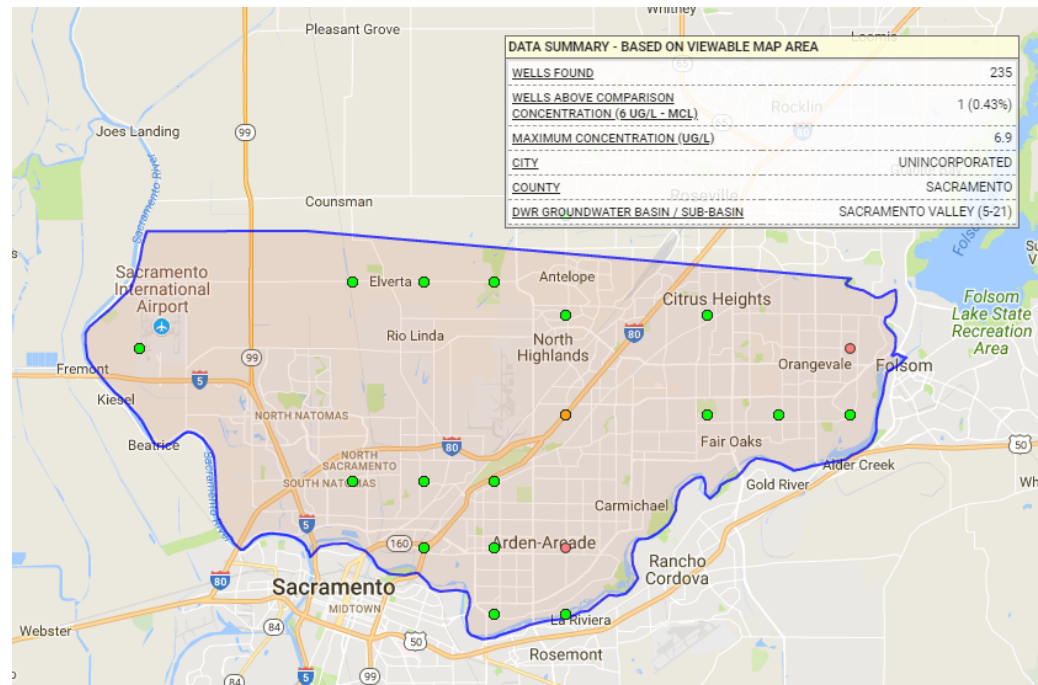
The screenshot displays the GEOTRACKER GAMA interface. At the top, the title "GEOTRACKER GAMA" is shown in blue. Below the title, there are several sections:

- Select Data to Display**: A green button with a plus icon.
- Filters / Data Export**: A green button with a minus icon. Below it is a dropdown menu labeled "Select a GIS Layer". A warning message states: "SELECTING A GIS LAYER ABOVE WILL LIMIT YOUR QUERY TO RESULTS IN THAT GIS LAYER". Below the dropdown are four buttons: "DRAW A BOUNDARY ON THE MAP TO FILTER DATA" (blue), "EXPORT DATA SHOWN ON MAP" (green), "DOWNLOAD MAP LOCATION DATA" (green), and "TABULAR DATA DOWNLOAD" (blue). At the bottom of this section is a link for "ADDITIONAL DATASET INFORMATION".
- Tools**: A green button with a plus icon.
- Reports and Well Logs**: A green button with a plus icon.
- Map Coverages**: A green button with a plus icon.
- GeoTracker Sites**: A green button with a plus icon.

At the bottom of the interface, there are three links: "CONTACT US" (blue), "TAKE A TOUR" (pink), and "VIEW ON GEOTRACKER" (blue).

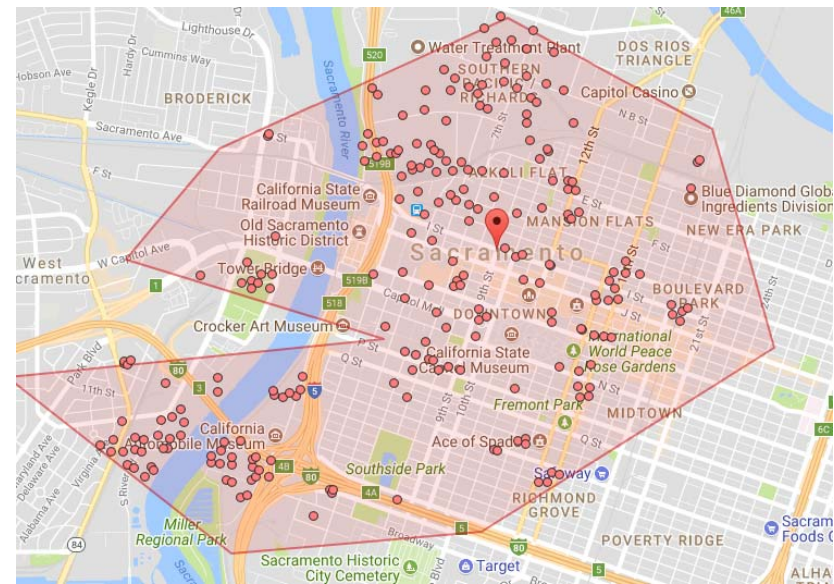
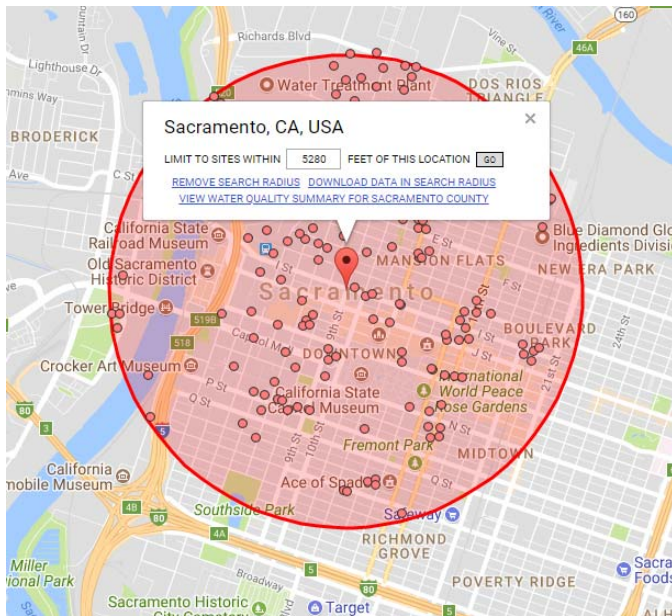
System Filters

- GIS layer based (examples):
 - Groundwater Basins
 - Ground Sustainability Agencies
 - Regional Board Boundaries



Map Filters

- Location specific searches
 - Based on user defined area



Additional Data Access

- Tab delimited format
 - Larger downloads
- Native data
- State wide downloads available
 - Chemical data
 - Depth to water

Data Assessment

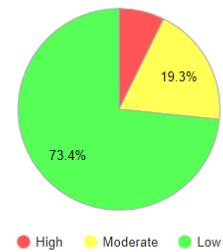
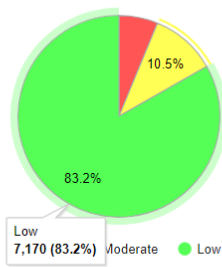
- Selectable GIS layer data statistics and summaries

CUSTOM GIS WELL REPORT - General Minerals and Ions

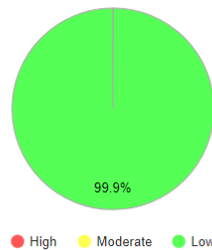
GIS LAYER: Groundwater Basins | GIS NAME: SALINAS VALLEY - 180/400 FOOT AQUIFER (3-4.01) | TIMEFRAME: All Years | Go

DATASETS: Monitoring Wells, Dairy Wells (Secure), Public Water System Wells, GAMA - Domestic Wells, GAMA - Priority Basin Project, GAMA - Special Studies, Department of Pesticide Regulation, Department of Water Resources, National Water Information System (NWIS), U.C. Davis Nitrate Report (Sec Dev)

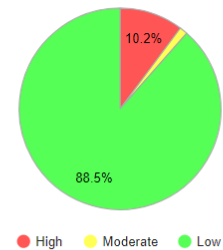
CHEMICAL	MCL TYPE	MCL	UNITS	WELLS SAMPLED	NUM SAMPLES	NUM EXCEED MCL	NUM DETECTIONS	MAX DETECTION
Chloride	SMCL	500	MG/L	619	2565	120	2565	17600
Fluoride	MCL	2	MG/L	390	1318	8	1234	530
Nitrite as N	MCL	1	MG/L	139	519	5	31	3.6
Perchlorate	MCL	6	UG/L	104	410	1	21	10.5
Sulfate	MCL	500	MG/L	589	2109	61	2104	1700
Total Dissolved Solids	SMCL	1000	MG/L	372	1323	294	1264	27700



Pesticides

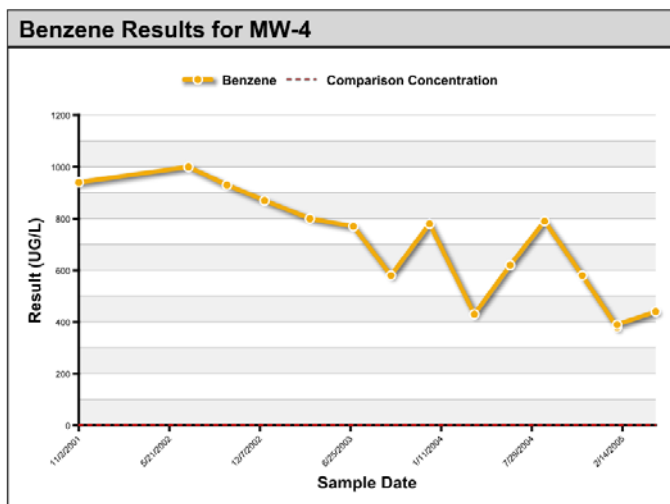


Volatile Organic Compounds



Data Assessment

- Chemical statistics and summaries
- Data trends



DATA SUMMARY - BASED ON VIEWABLE MAP AREA

WELLS FOUND	477
WELLS ABOVE COMPARISON CONCENTRATION (10 MG/L - MCL)	39 (8.18%) Mol Ranch
MAXIMUM CONCENTRATION (MG/L)	700
CITY	UNINCORPORATED
COUNTY	San Andreas CALAVERAS
DWR GROUNDWATER BASIN / SUB-BASIN	SAN JOAQUIN VALLEY (5-22)
WATER SYSTEM (GAMA SECURE)	
HYDROGEOLOGIC VUL AREA (GAMA SECURE)	Calaveritas

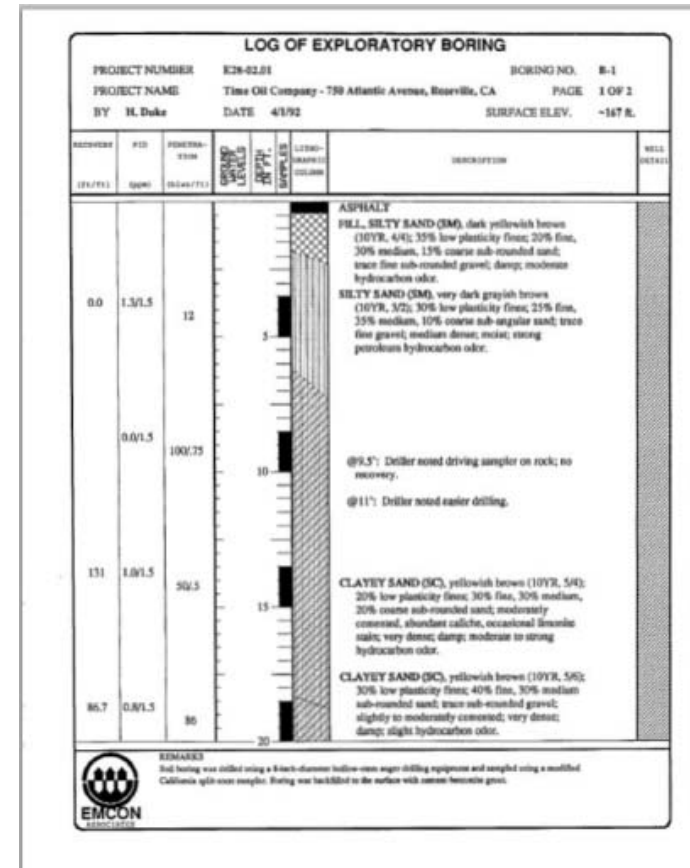
Available Soil Boring Logs

Cleanup site well and soil boring logs

GEOTRACKER GAMA

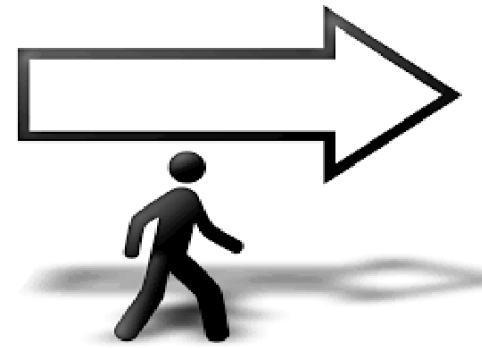
- + Select Data to Display
- + Filters / Data Export
- + Tools
- Reports and Well Logs
 - Data Summary (Based on Viewable Map or Selected Filter)
 - Concentration Summary
 - [County Water Quality Summary](#)
 - [GeoTracker Boring Logs](#)
 - [Local Groundwater Publications](#)
- + Map Coverages
- + GeoTracker Sites

[CONTACT US](#) [TAKE A TOUR](#) [VIEW ON GEOTRACKER](#)



GAMA Future Developments

- Incorporate outside data
 - Current
 - Historical
- Vertical data filters
- Access to DWR well logs



Contact us

Aaron Button

Aaron.Button@waterboards.ca.gov

(916) 341-5577



Questions?

