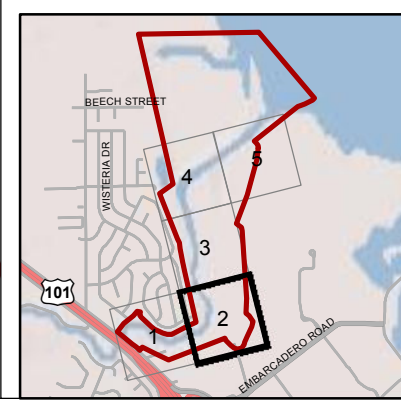
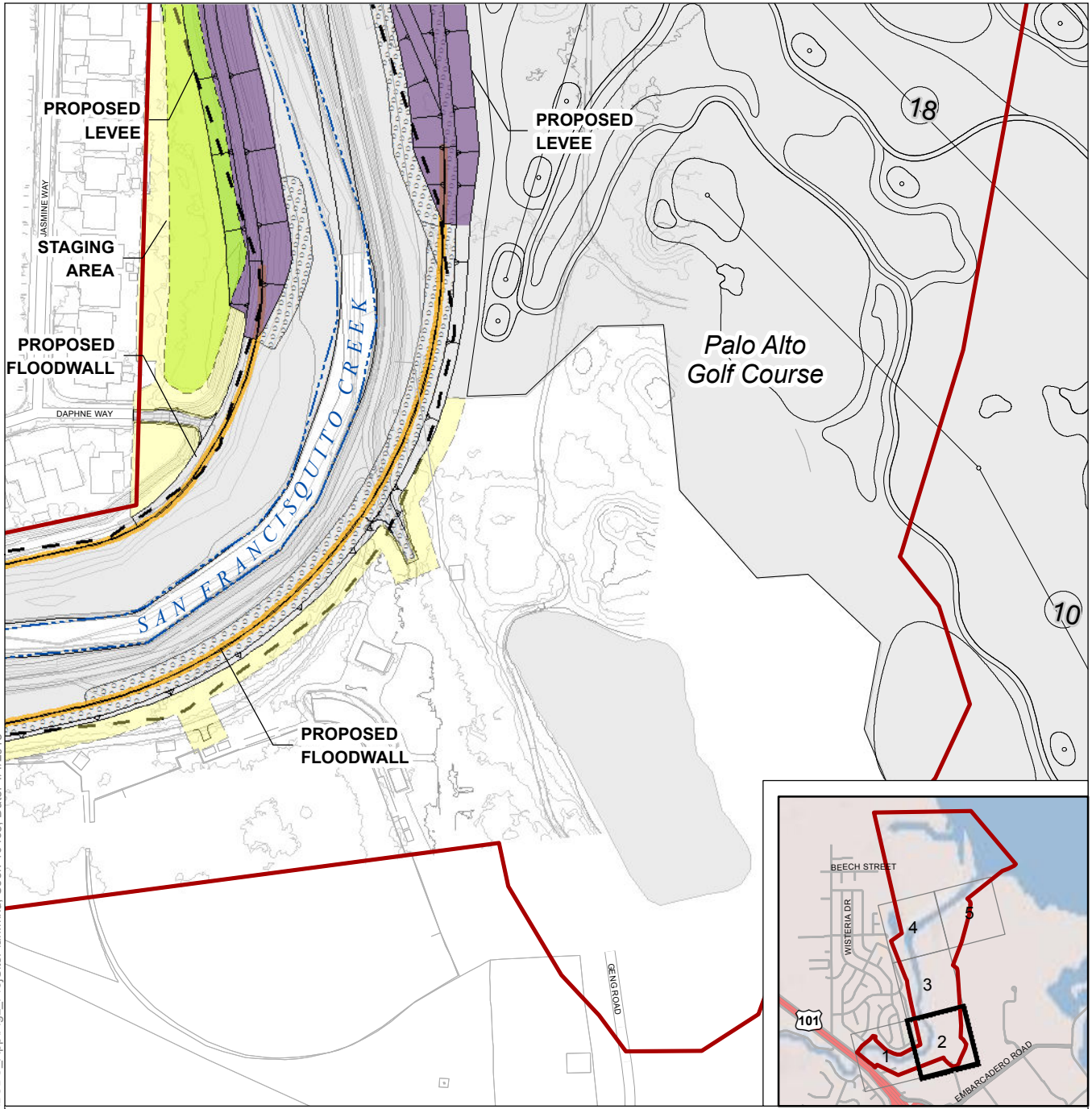


Path: K:\Projects_1\JointPowersAuthority\00882_09\mapdoc\ECDC_App\Fig2_ProjSitePlan.mxd; User: 19435; Date: 4/4/2013

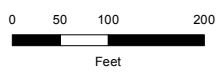


- | | | | |
|--|-------------------------------------------|--|----------------------------------|
| | Existing Features | | Levee |
| | Major contours (5 ft) | | Levee Degrade |
| | Minor contours (1 ft) | | Staging Area |
| | Delineation Study Area Boundary | | Floodwall |
| | Shoreline, Generalized (MHW, 7ft NAVD 88) | | Proposed Rock, Gravel, or Paving |
| | 100-Foot Shoreline Setback | | Temporary Construction Easement |
| | | | Limit of Earthwork |

Prepared by:
ICF International
 75 East Santa Clara Street
 Suite 300
 San Jose, CA 95113
 (408) 216-2815

Prepared on:
 27 Feb 2013

Prepared for:
**San Francisquito
 Joint Powers
 Authority**
 1231 Hoover Street
 Menlo Park, CA 94025
 (650) 561-4580



Note: Mean High Water (6.544 feet NAVD 88) and High Tide Line (7.034 feet NAVD 88) are both represented by the 7.0 foot NAVD 88 contour. This contour is shown only in the tidally-influenced parts of the delineation study area.



Figure 2.2
 Project Site Plan
 San Francisquito Creek Flood Reduction, Ecosystem Restoration & Recreation Project