

Figure 1: Berm/embankment and service road (on left) separating agricultural field (not seen) from spray irrigation disposal area (on right)

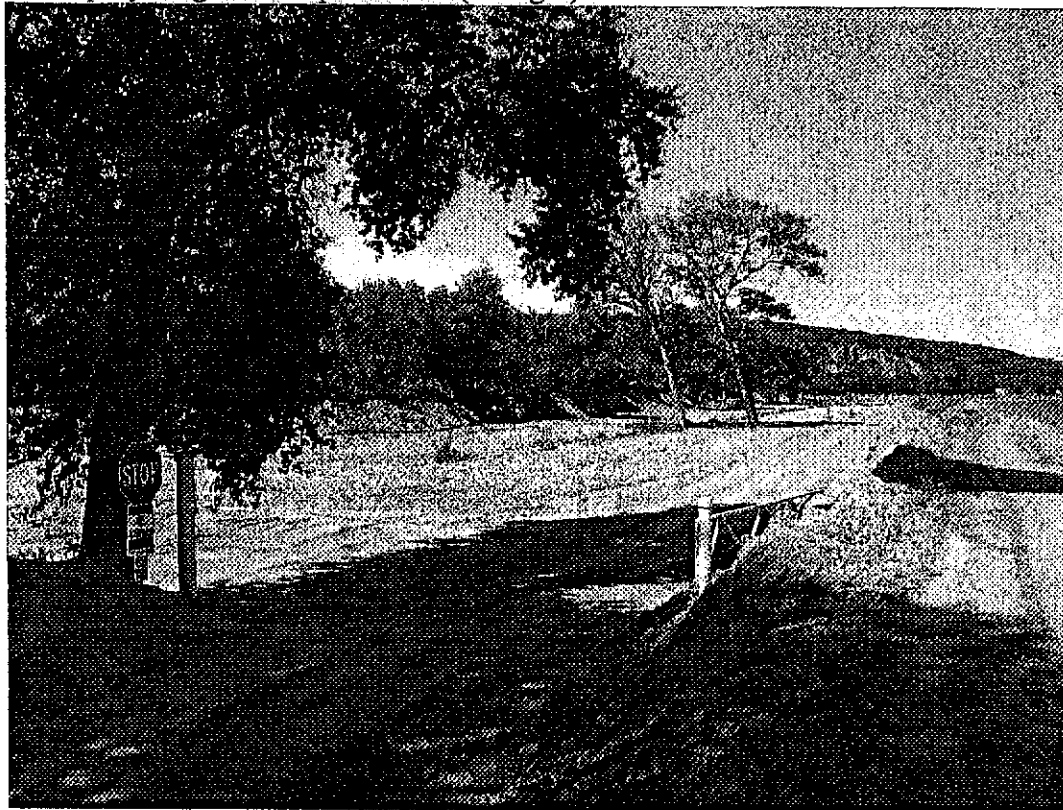


Figure 2: Gated access to disposal area (south from HWY 68); service roads and berm/embankment separating disposal area from agricultural fields (on right)

California Utilities Service – Update regarding disposal area access and signage



Figure 3: Gated access to disposal area (north from Davis Road)

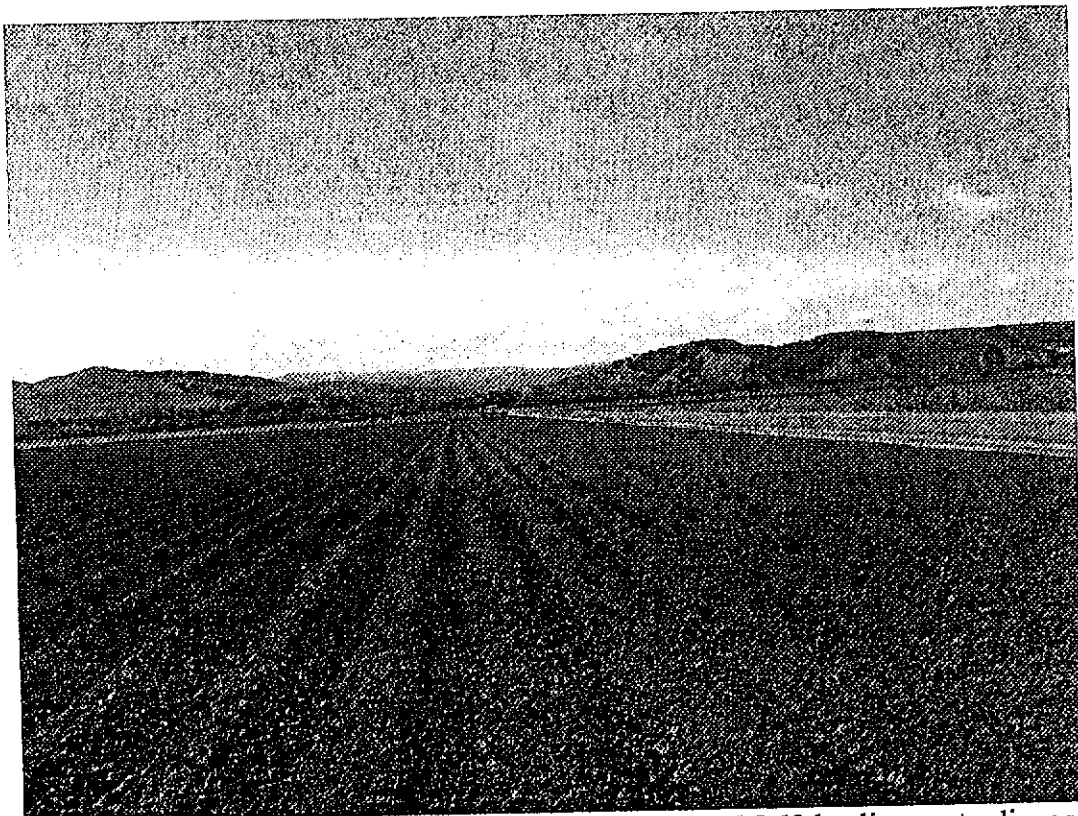


Figure 4: Agricultural service road (on right) from HWY 68 leading up to disposal area in the distance

California Utilities Service – Update regarding disposal area access and signage

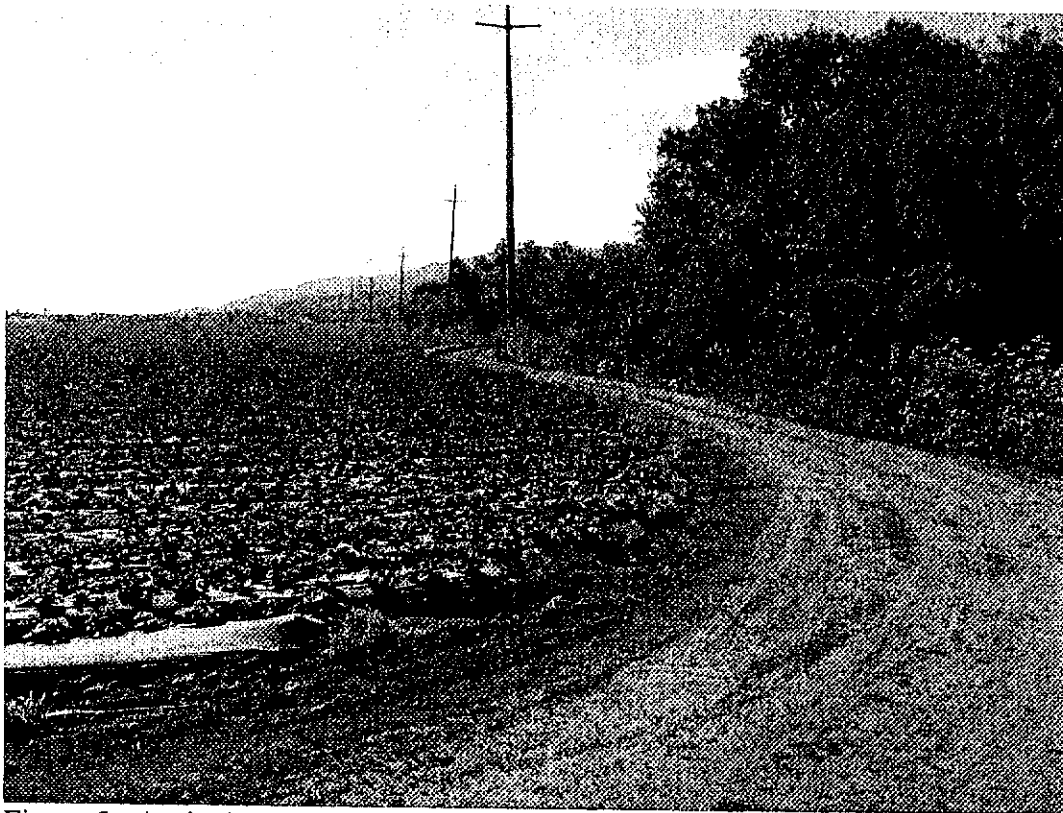


Figure 5: Agricultural service road from Davis Road leading up to disposal area beyond tree line on right



Figure 6: Signage at Discharger's gated access road along Davis Road

California Utilities Service – Update regarding disposal area access and signage

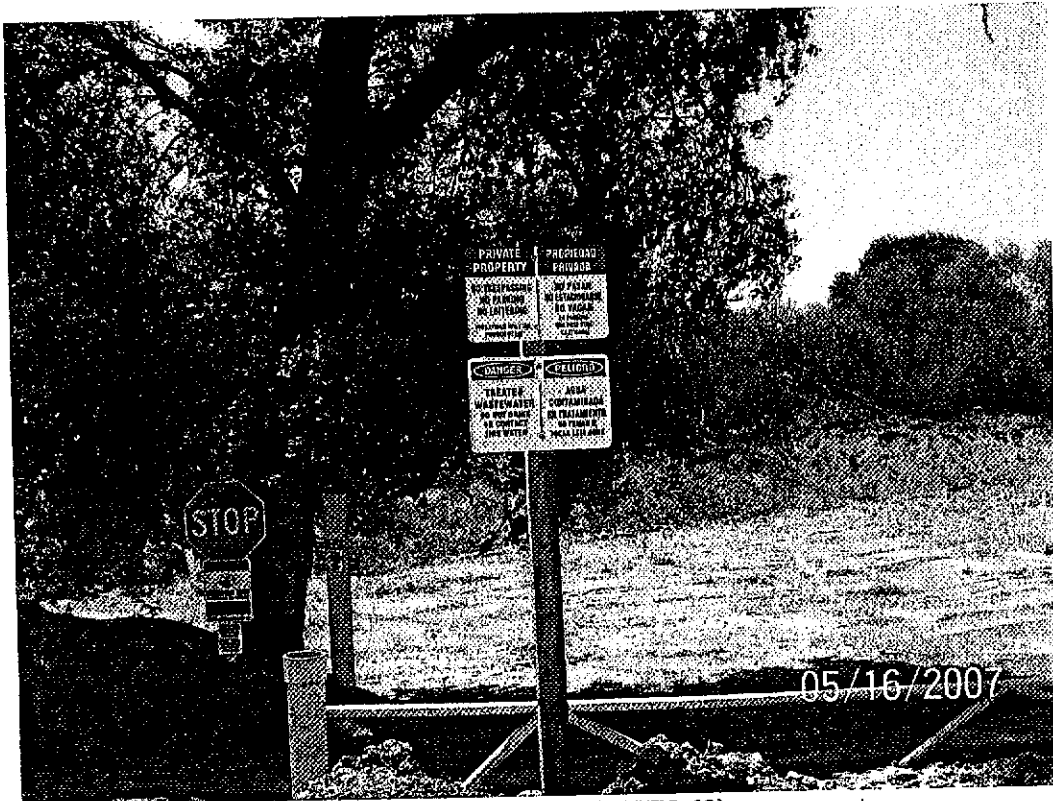


Figure 7: Signage at Discharger's southern (HWY 68) access gate



Figure 8: Signage on agricultural service road side of berm/embankment every 500 feet

California Utilities Service – Update regarding disposal area access and signage

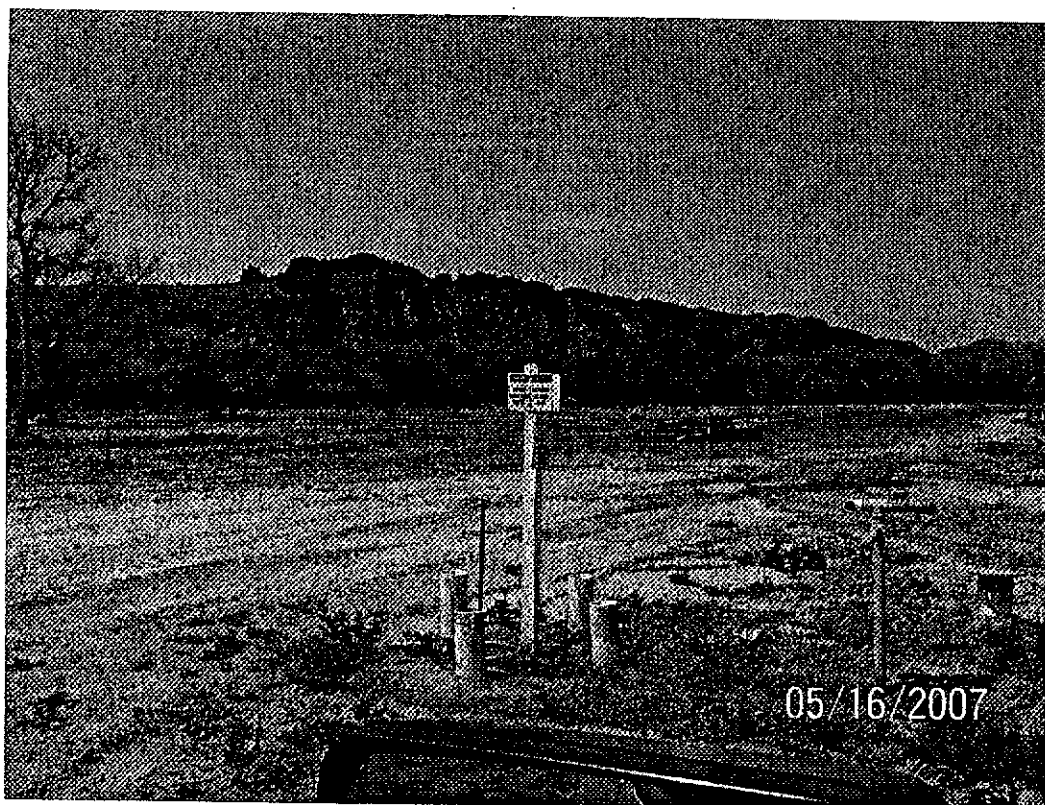


Figure 9: Signage at valve junction and riser

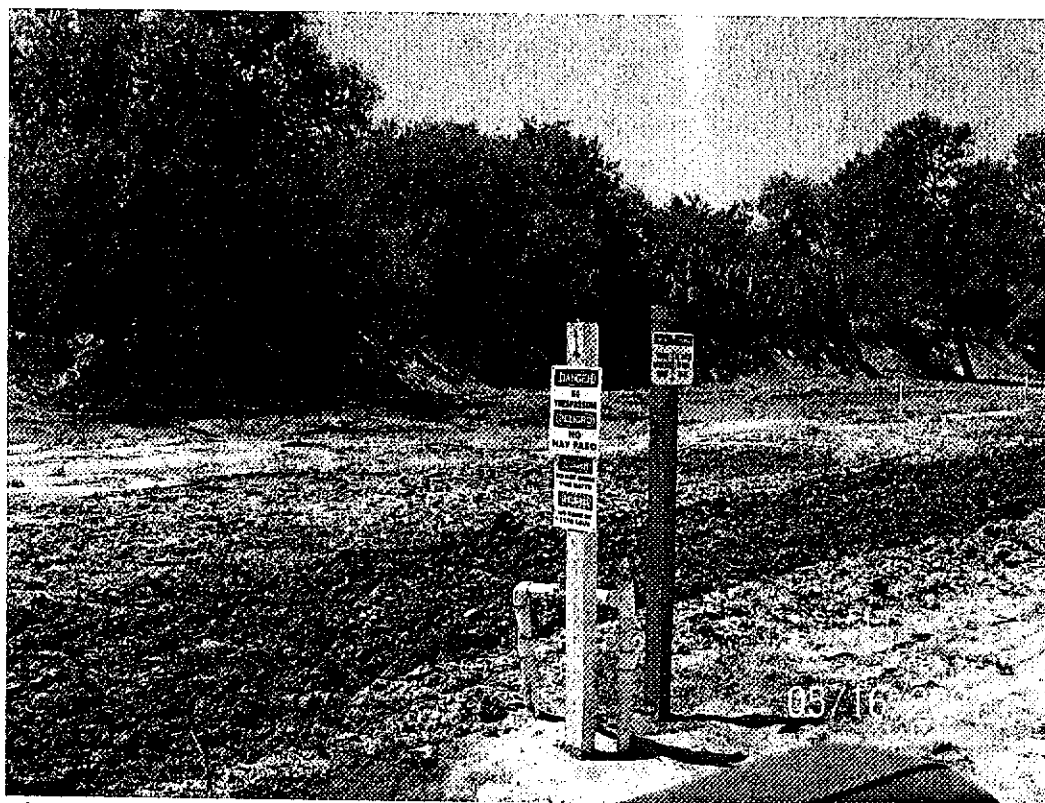


Figure 10: Signage at valve riser

California Utilities Service – Update regarding disposal area access and signage



Figure 11: Close up of typical signage along agricultural service road