

LEGEND

--- APPROXIMATE SITE BOUNDARY
 - - - APPROXIMATE SUBSURFACE PIPING

● MW-11
 ● HVE-1
 ⊗ P-2
 ● MW-22

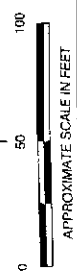
○ GROUNDWATER MONITORING WELL
 ⊗ HIGH VACUUM EXTRACTION WELL
 ⊗ PIEZOMETER

○ DESTROYED MONITORING WELL

○ MTBE ISOCONCENTRATION IN MICROGRAMS PER LITER (ug/L) (APPROXIMATE)

NOTES:

1. SOURCE OF MAP: WILSON LAND SURVEYS NORTH COAST ENGINEERING INC., AND SECOR FIELD MEASUREMENTS.
2. SITE DETAIL INFORMATION APPROXIMATE
3. APPROXIMATE SUBSURFACE PIPING LOCATIONS PROVIDED BY WAYNE PERRY.



<p>SECOR 3437 EMPRESA DR. SUITE A SAN LUIS OBISPO, CALIFORNIA PHONE: (800) 546-5353 (TOLL FREE) FAX: (800) 546-5353 (TOLL FREE)</p>	<p>FOR: Chevron STATION NO. 9-0919 2104 MAIN STREET CAMBRIA, CALIFORNIA</p>	<p>FIGURE 7</p>
	<p>JOB NUMBER: 06CHUR001.00 DRAWN BY: J. KENNEDY CHECKED BY: T. PORTER</p>	<p>APPROVED BY: S. LITTLE DATE: APRIL 10, 2007</p>

Item No. 7 Attachment No. 2
 July 6, 2007 Meeting
 Underground Storage Tank Program
 MTBE Priority Sites