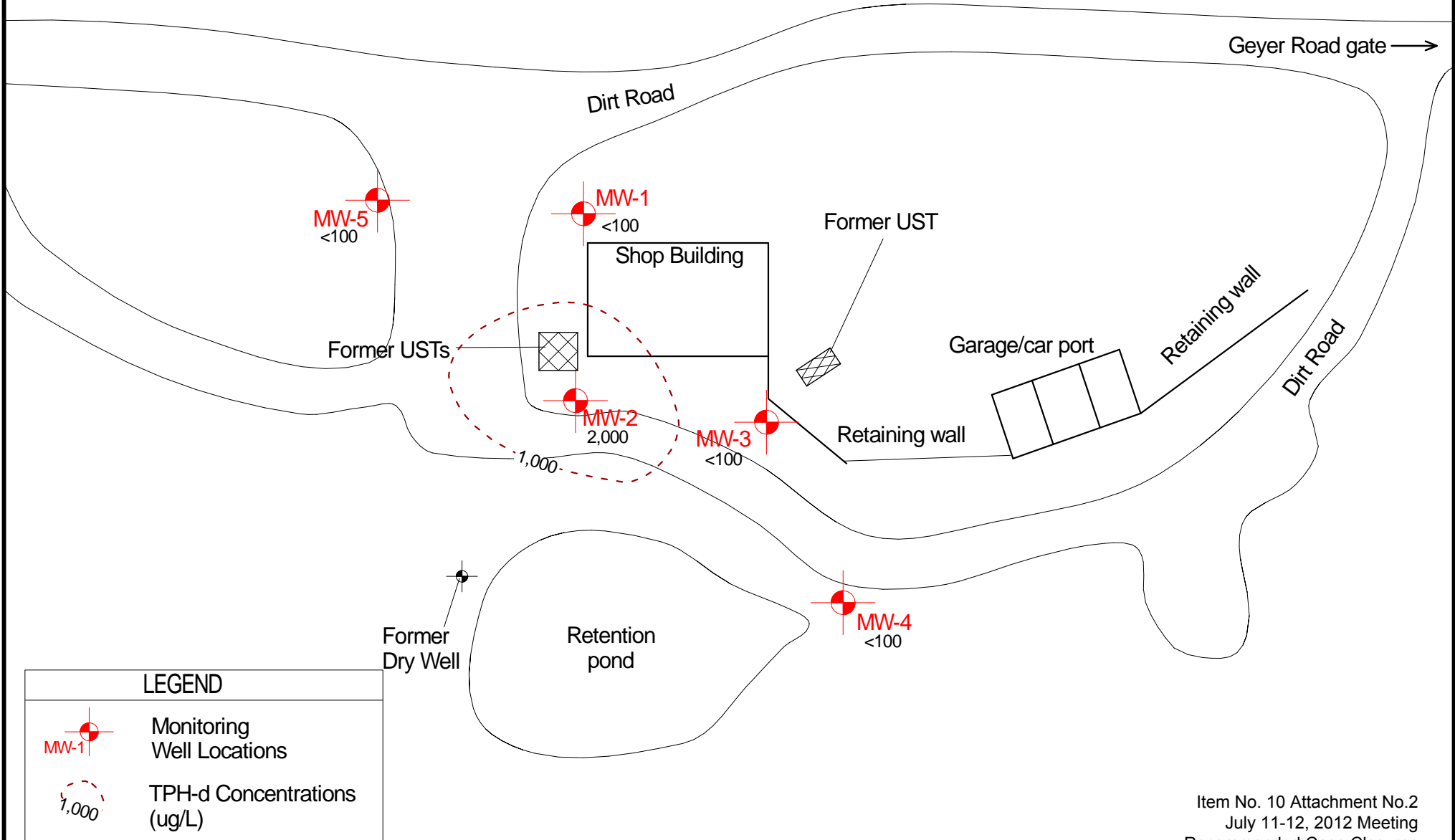
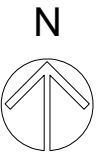


Approximate Scale:

1" = 60'



LEGEND

- Monitoring Well Locations
- TPH-d Concentrations (ug/L)

Item No. 10 Attachment No.2
July 11-12, 2012 Meeting
Recommended Case Closures

ENVIRONMENTAL INVESTIGATION SERVICES, INC.

170 Knowles Drive Suite 212 Los Gatos, CA 95032
(408) 871-1470 Fax: (408) 871-1520

EIS Project # 815-3P

August 2011

Figure

TPH-d Concentrations
250 Geyer Road
Scotts Valley, California