

# Salinas Watershed Invasive Non-native Plant Control and Restoration Program

Paul Robins

Resource Conservation District of  
Monterey County

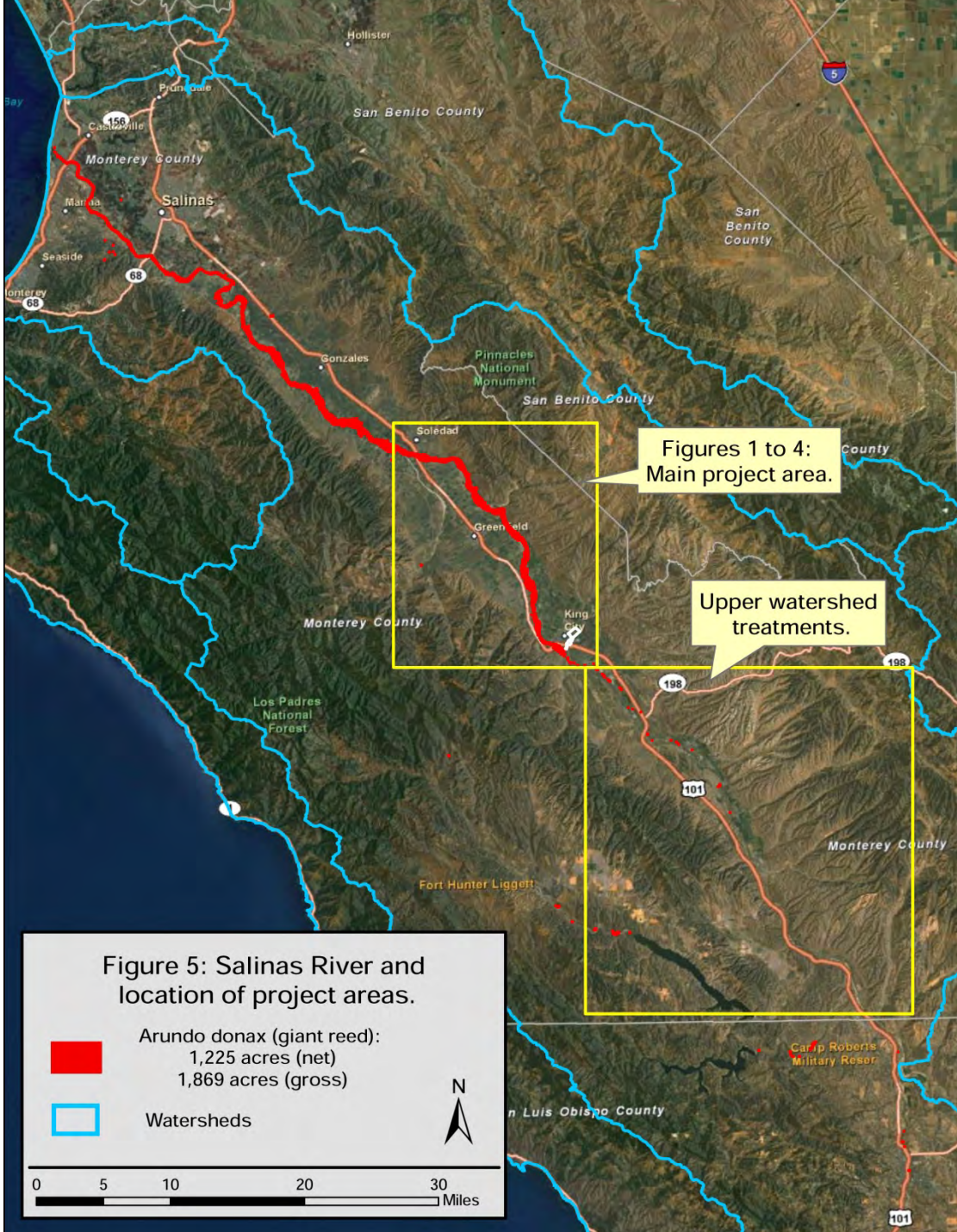


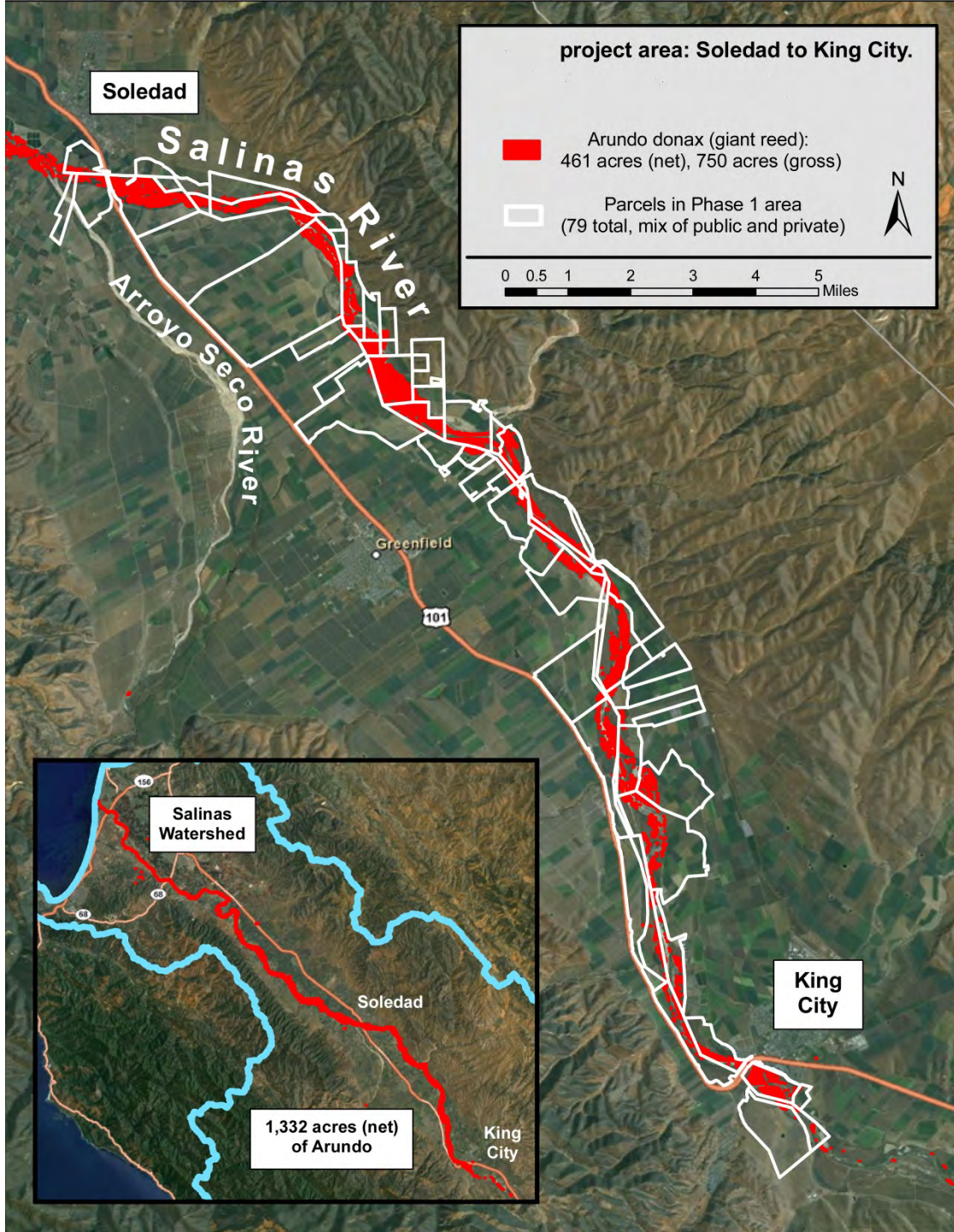
# The Situation

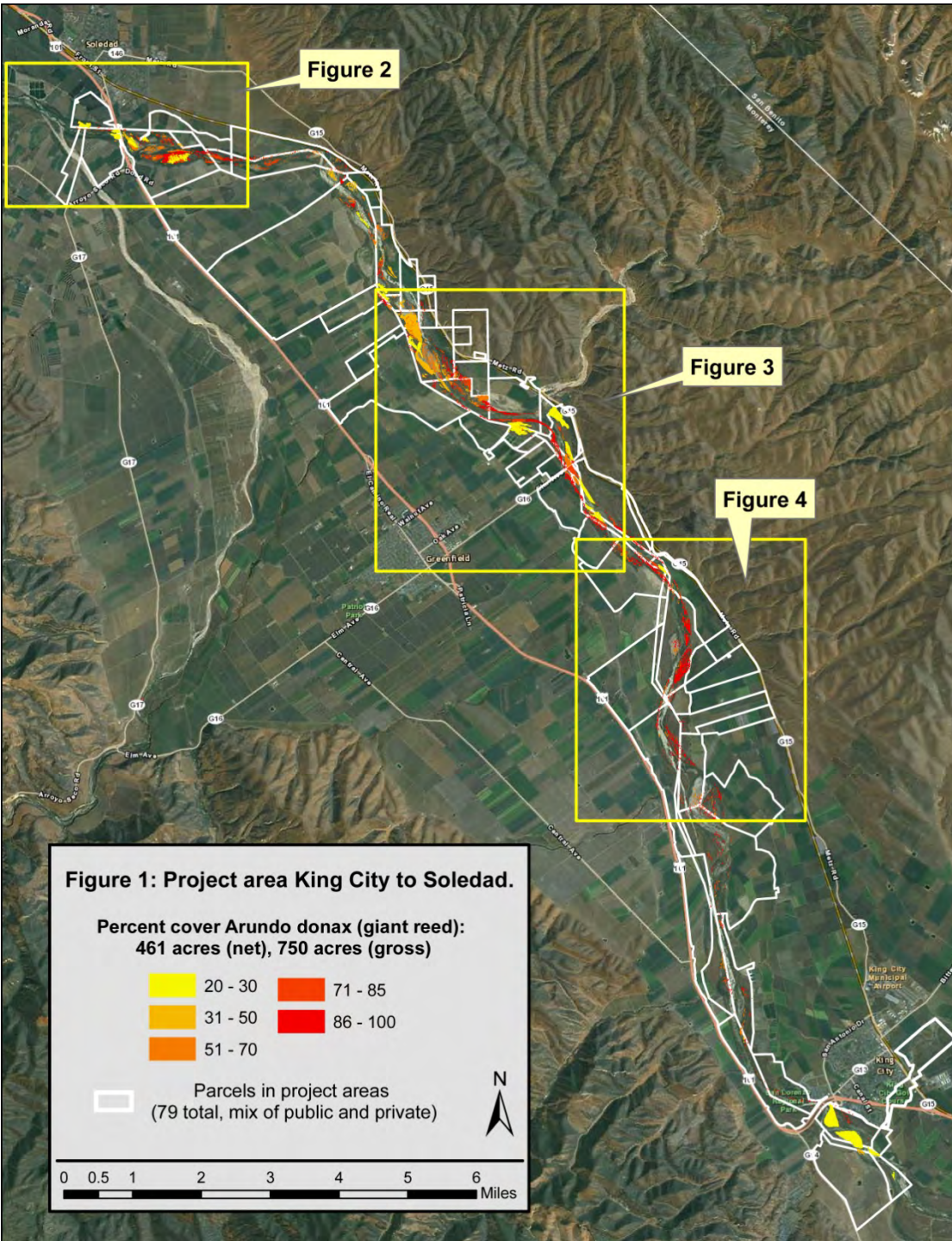
- ~1870 gross acres infested along the river
- Extent and density of infestation likely to increase with year-round water
- Poor quality habitat, worsens erosion and flood risk
- Resource agencies' goals align with landowners' for removal
- Highly effective programs modeled in California

# Approach

- Top-to-bottom of watershed treatment
  - SLO County infestations under management
  - Upstream of King City treated once
- Minimize environmental impacts and focus on positive benefits of control
- Near end of permit 'shuffle'
- Pursuing funding to augment landowner efforts.
  - CA Wildlife Conservation Board \$\$ by fall 2014







**Figure 2**

**Figure 3**

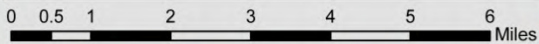
**Figure 4**

**Figure 1: Project area King City to Soledad.**

**Percent cover Arundo donax (giant reed):  
461 acres (net), 750 acres (gross)**

- |   |  |
|---|--|
| <span style="display: inline-block; width: 15px; height: 15px; background-color: yellow; border: 1px solid black;"></span> 20 - 30  | <span style="display: inline-block; width: 15px; height: 15px; background-color: orange; border: 1px solid black;"></span> 71 - 85 |
| <span style="display: inline-block; width: 15px; height: 15px; background-color: #FFD700; border: 1px solid black;"></span> 31 - 50 | <span style="display: inline-block; width: 15px; height: 15px; background-color: red; border: 1px solid black;"></span> 86 - 100   |
| <span style="display: inline-block; width: 15px; height: 15px; background-color: #FF8C00; border: 1px solid black;"></span> 51 - 70 |  |

Parcels in project areas  
(79 total, mix of public and private)



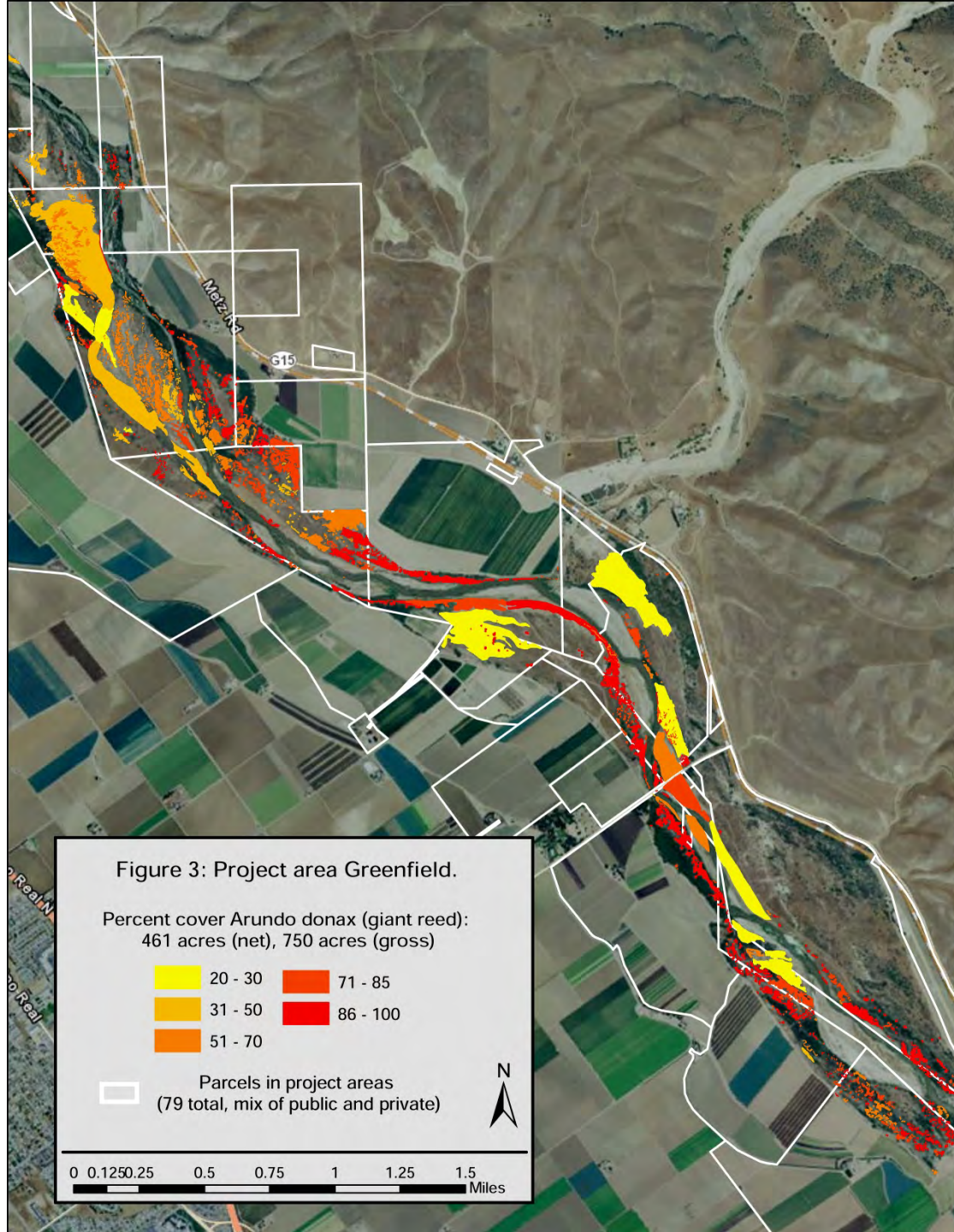
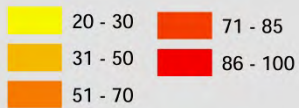


Figure 3: Project area Greenfield.

Percent cover Arundo donax (giant reed):  
461 acres (net), 750 acres (gross)



White outline: Parcels in project areas  
(79 total, mix of public and private)

0 0.125 0.25 0.5 0.75 1 1.25 1.5 Miles

# Methods

- Patches: Herbicide (glyphosate and/or imazapyr) ‘treat and leave’
  - Haul out, burn and/or chip if flood hazard a concern
- Large stands, depending on density/stature:
  - bend and treat, then mow
  - Mow and treat re-growth (less common)
- Mulch from mowing provides organic soil cover
- Revegetate with native, ‘floppy’ vegetation where natural recruitment unlikely but critical for soil stabilization



# Treatment Process

Treat



Reduce

Re-vegetate



# Biomass reduction:

- **Fixed tooth attachment**









Typical program costs (treatment, re-treatment, re-veg)

\$30k per acre (low efficiency)

\$13k per acre (efficient)

\$7k per acre (very high efficiency)

Many programs operate in the 'low efficiency range'

- Probably not fundable

Need to get to the efficient large scale implementation range

Multiple funding sources- large pots of funding:

Coastal Conservancy, WCB, IRWM, River Parkways, SWRCB

# Time and Cost

- Average \$7,500/acre treated.
  - Cost dependent on scale
  - Spraying \$4.5 k to \$5 k (prep and treat).
  - Reducing/mowing: \$2.5 to \$3k
- Focused on starting in King City and moving downstream, but can work opportunistically, especially if retreatment/ monitoring is solid
- Need to also treat tributaries and re-treat upstream areas.



# Permitting

- **CEQA 'Mitigated Negative Declaration'** complete in 2011
- **Army Corps of Engineers:** 'no impact'
- **NOAA National Marine Fisheries Service:** 'Technical Assistance' letter received 2013
- **CA Dept of Fish and Wildlife** 'Streambed Alteration Agreement' (10-year) draft received and commented upon
- **US Fish and Wildlife Service** 'Technical Assistance' letter promised but still pending
- **Water Quality Control Board:** no 401 'needed', NPDES for weed control in process

# Protection measures

- Primarily ‘avoidance’ of protected wildlife
  - Timing of work (fall) avoids nesting and active periods for most species
  - Location of work outside of wetted areas
  - Lack of ‘federal nexus’ through ACOE means no option for ‘take’ (which would include relocation)
- Pre-project monitoring and flagging
- No removal of native vegetation
- Chemical treatment only (no mechanical) within 10’ of channel

# Contact information

[paul.robins@rcdmonterey.org](mailto:paul.robins@rcdmonterey.org)

Office: 831-424-1036, ext. 124

Mobile: 831-236-1740