

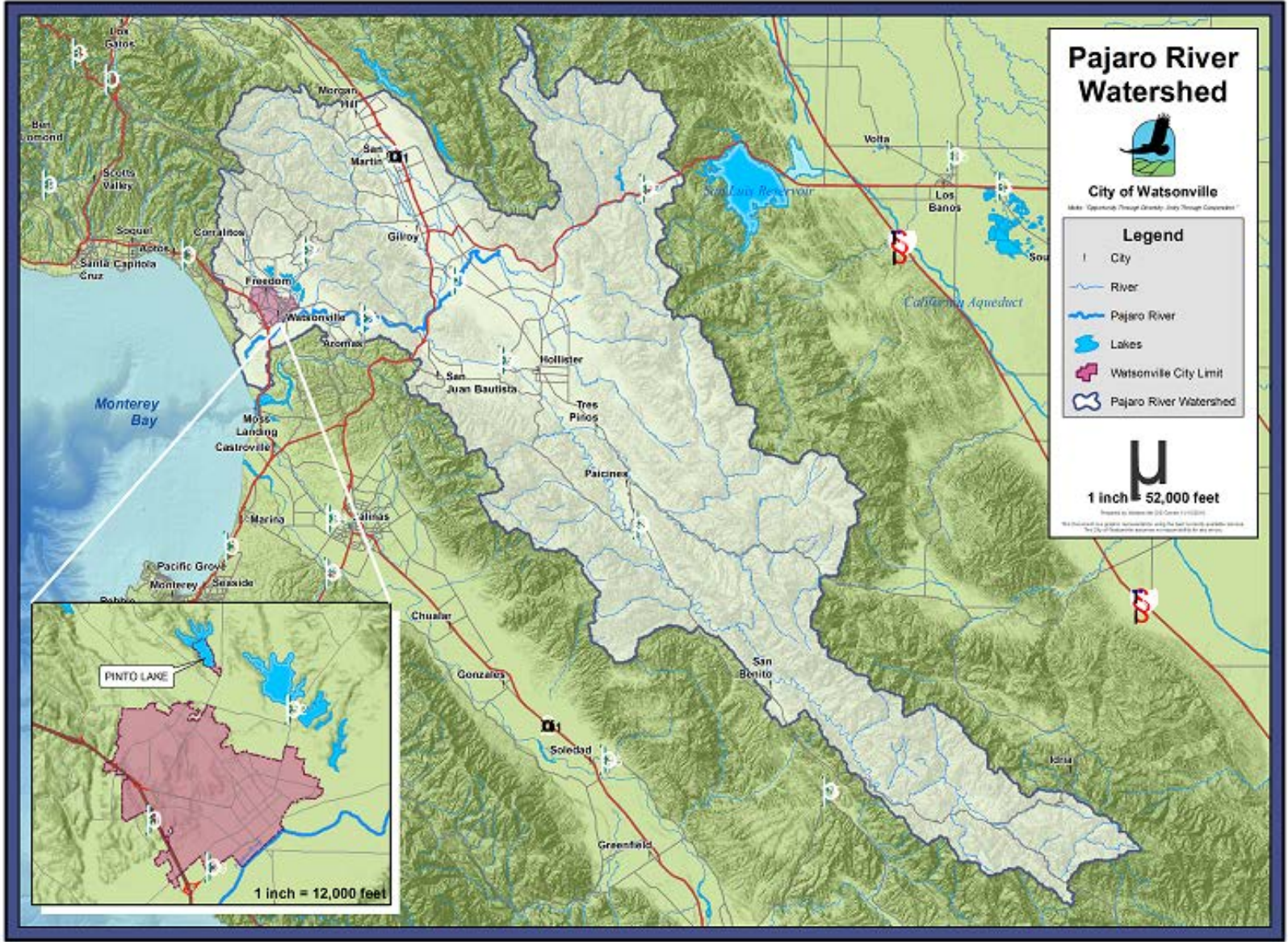
Water Quality Management Programs



Jackie McCloud

Environmental Projects Manager

December 9, 2016



Pinto Lake Provides Water-Based Recreational Activities To Thousands of Visitors Every Year



Pinto Lake



Massive cyanobacteria blooms occur in spring, summer and fall.

- Predominantly aphanizomenon, dolicospermum and microcystin.

OEHHA and WHO Public Health Goal of 0.8ppb.

Multi agency effort to coordinate monitoring, notifications and solutions.

Partners include: UCSC, CSUMB, RCD, County of Santa Cruz, Regional Board Staff



In-Lake Activities



Multiple management measures have been implemented:

- Carp removal
- Outreach and stakeholder involvement
- Treatment of lake in 2017

Watershed Activities and Improvements



**Amesti
Creek**

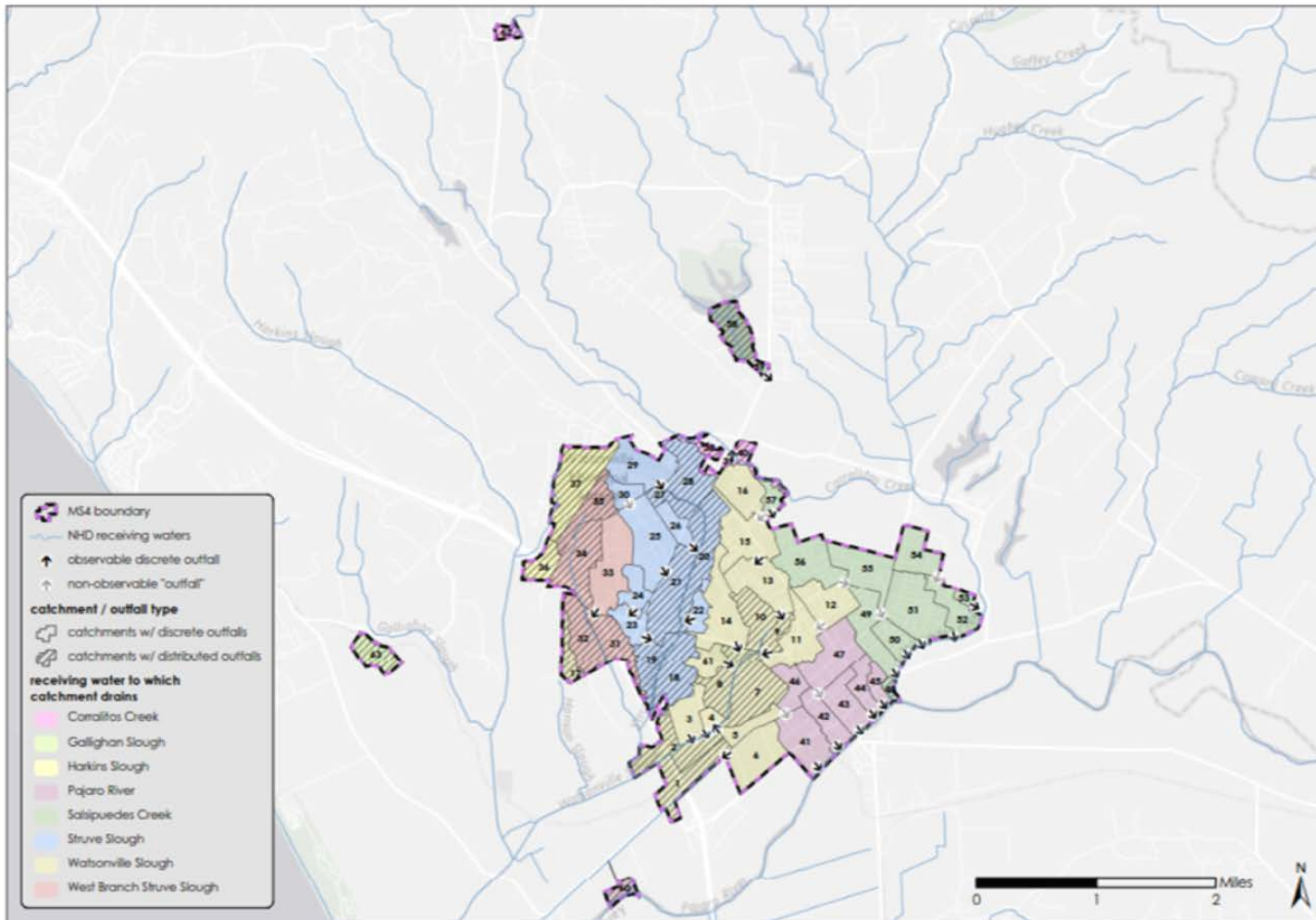


CCC Creek

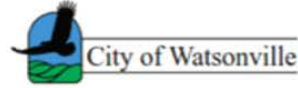


Municipal Stormwater Program





Map 1a: Stormwater urban catchment boundaries for the City of Watsonville, CA. Catchment attributes can be found in the accompanying tables. [Full MS4].



Investment in a Disadvantaged Community

Impact on community

- Investigation of key public health issues with outside resources
- Implementation of projects and programmatic changes that benefit the community
- Increased collaboration between regional board staff and municipalities

Thank you for your time!



If you have more questions or need more information:

Jackie McCloud

jackie.mccloud@cityofwatsonville

(831) 768-3172