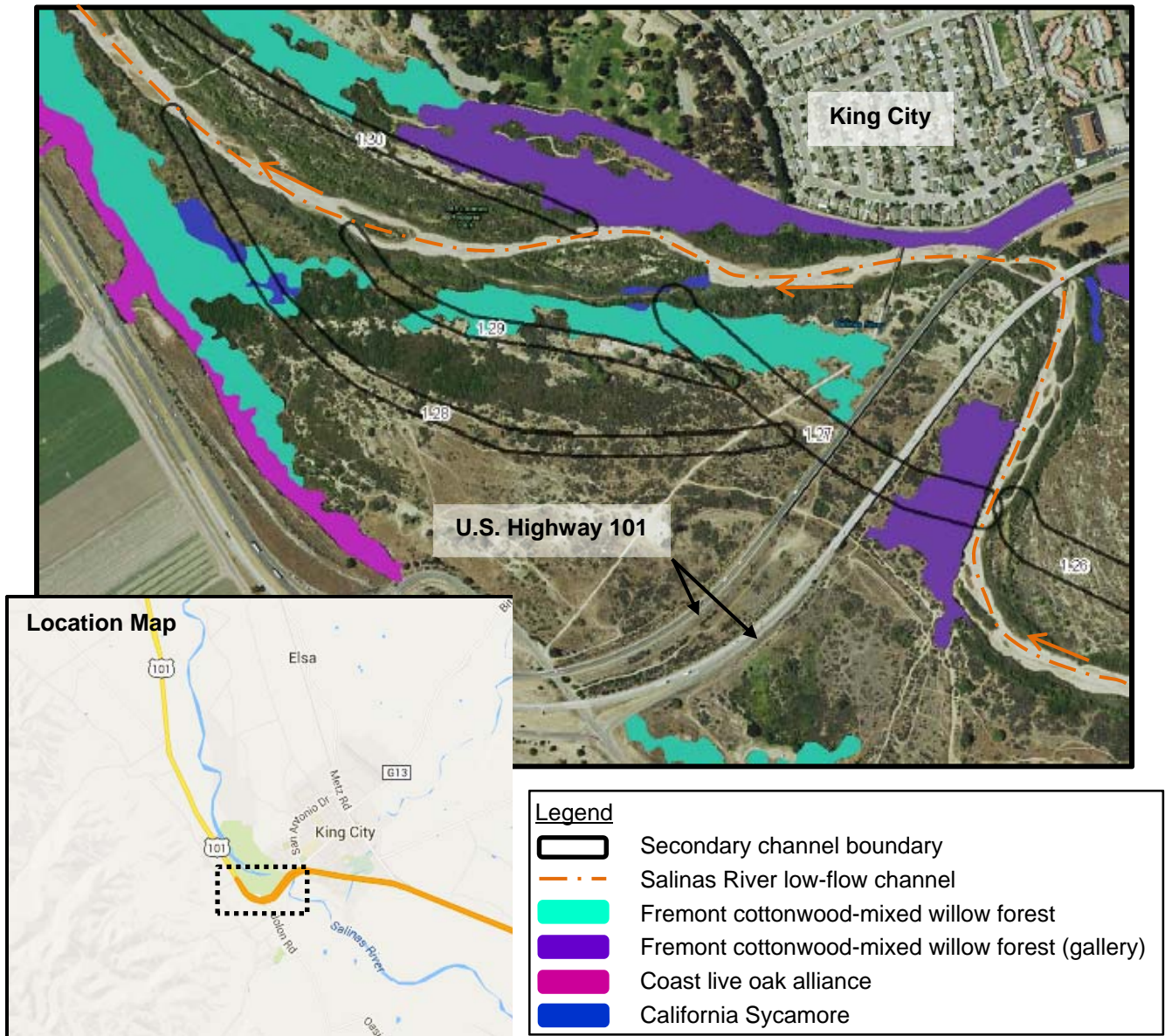


ATTACHMENT 3

Salinas River 2016-2025 Stream Maintenance Program
 EXAMPLE OF SECONDARY CHANNELS

SECONDARY CHANNELS 1.26, 1.27, 1.28, 1.29, AND 1.30 (near King City)

As seen below, Project secondary channels are designed as much as possible to follow existing secondary channels, avoid the low-flow channel except at tie-in locations, and avoid high-value habitat while providing limited flood reduction benefits. (Existing secondary channels are frequently identified by the absence of mature riparian vegetation, particularly trees and other large woody species.) Secondary channel 1.27 is designed to reduce pressure on the riverbank protecting King City.



Notes

1. Imagery, habitat mapping, and secondary channel mapping provided by MCWRA.
2. Habitat types as identified for the 2013 Draft Environmental Impact Report.