

REGIONAL BOARD WORKSHOP

MARCH 03, 2016

PALOS VERDES PENINSULA WMG



TIMELINE

June 28, 2013

Notice of
Intent
Submitted

June 26, 2015

Draft EWMP
Submitted

January 25,
2016

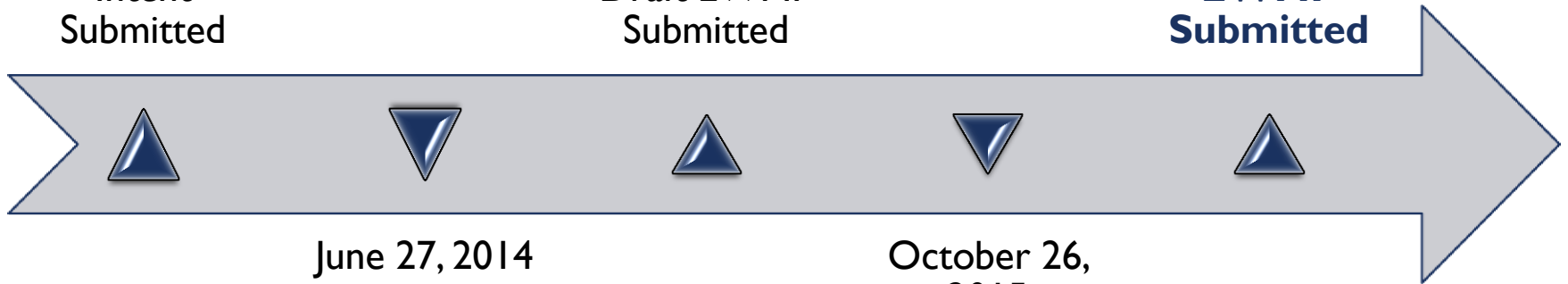
**Revised
EWMP
Submitted**

June 27, 2014

EWMP Work
Plan
Submitted

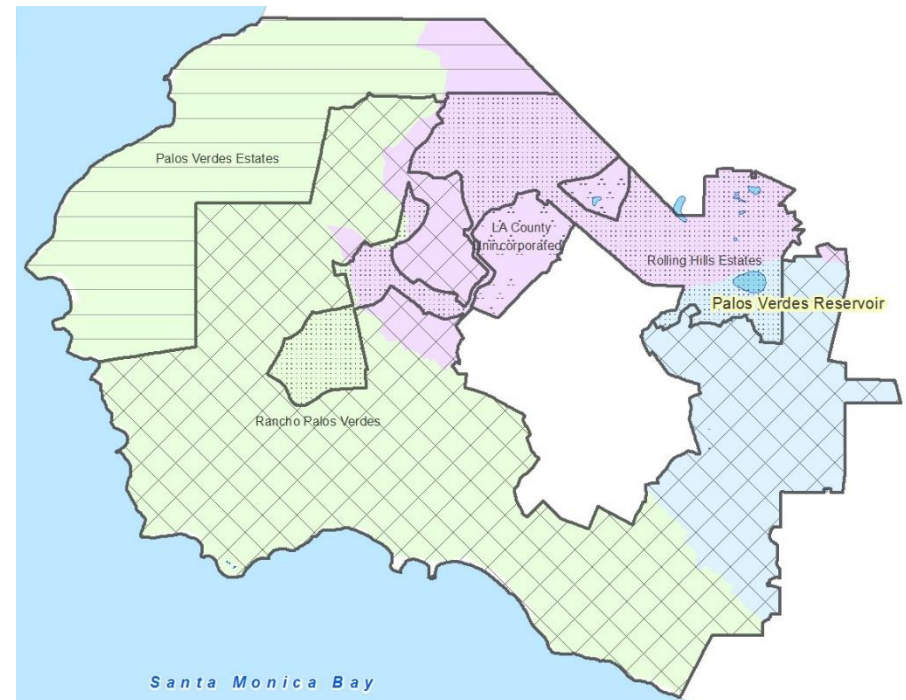
October 26,
2015

**Comments
Received**



HIGHLIGHTED CHANGES

- BMP Information Updates
 - BMP Selection Process
 - Interim Milestones & Implementation Dates
 - Multiple Benefits
- TMDL Compliance
- Financial Strategy Updates
- RAA Changes
- EWMP Updated to Address **Stormwater Resource Plan** Checklist and Self-Certification for Prop I Grant



PENINSULA PROJECTS

- Project Progress
 - San Ramon Canyon (Early Action) – **Complete**
 - Equestrian Center (Early Action) – **Complete**
 - Casaba Estates – **Complete**
 - Chandler Quarry – **Under Construction**
 - SCBG Wetland and Lake Revitalization Project – **Design Phase**
- Currently seeking opportunities to collaborate with **agencies outside of the Peninsula**



STATUS

- The group has been and will be **proactive** in looking for and implementing projects - Actively implementing TMDLs since adoption
- Successes already achieved with regional BMPs & 30-month projects
- The Peninsula is committed and ready to be **creative** in finding funding
- Looking forward to an **approved** plan



QUESTIONS

