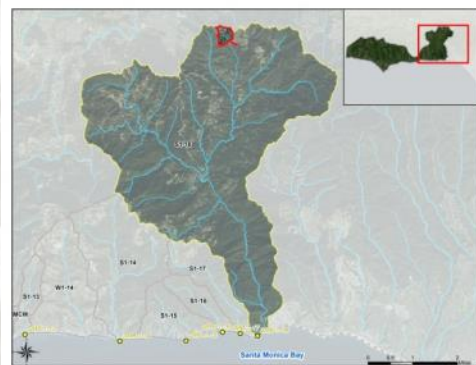
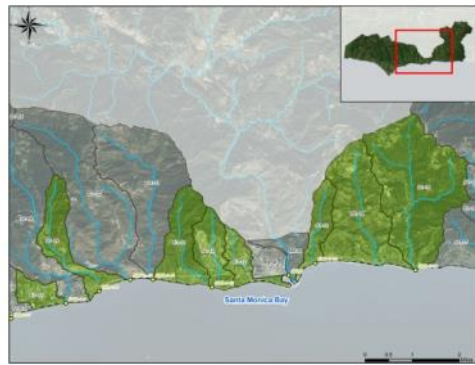


NORTH SANTA MONICA BAY COASTAL WATERSHEDS (NSMBCW) ENHANCED WATERSHED MANAGEMENT PROGRAM (EWMP)

Los Angeles Regional Water Quality Control Board
Informational Workshop
July 9, 2015

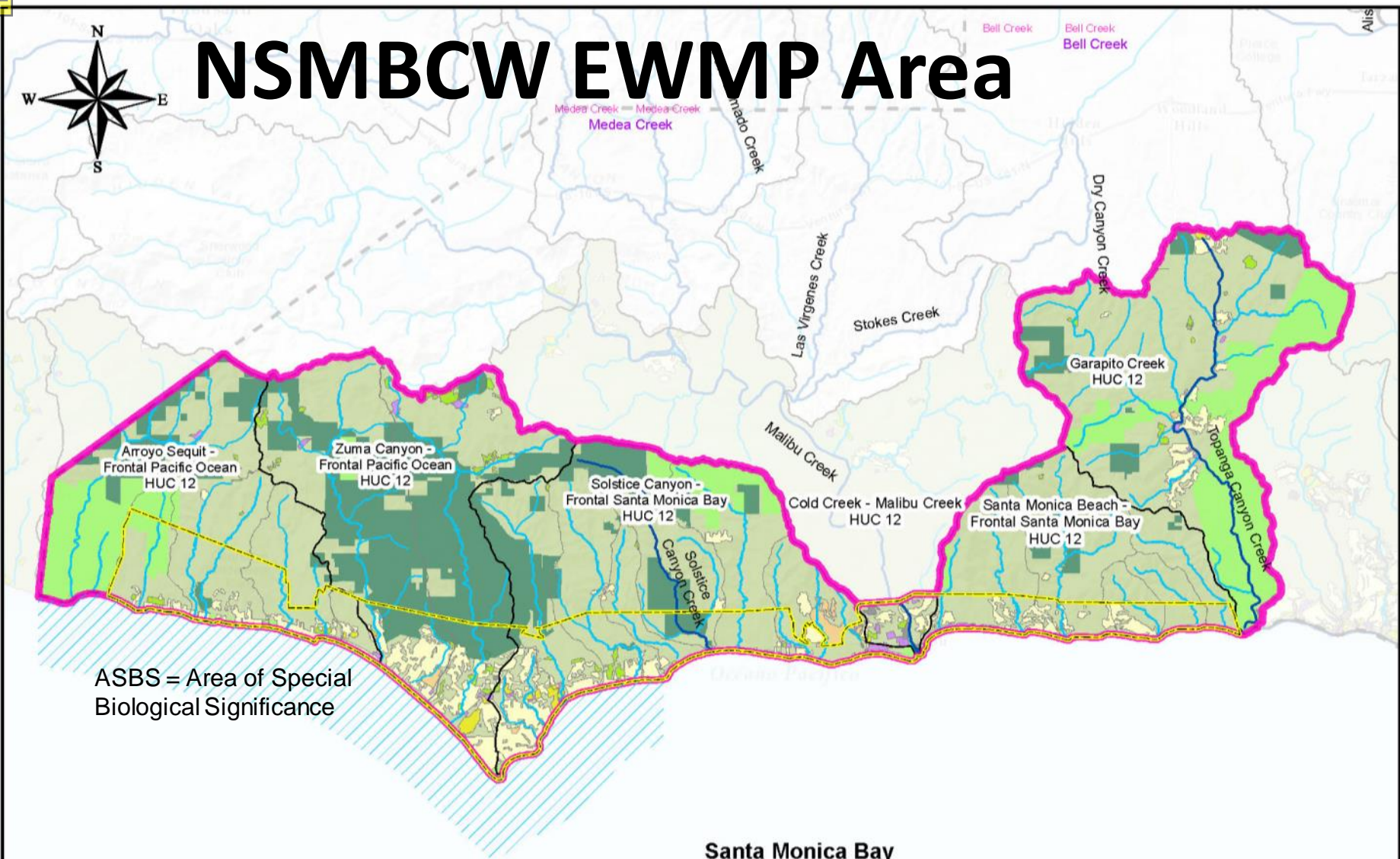


Agenda

- Watershed introduction
- Stakeholder outreach
- EWMP overview, including early action and future BMPs
- Status of ordinances and policies
- Financial strategy
- Adaptive management



NSMBCW EWMP Area



ASBS = Area of Special Biological Significance

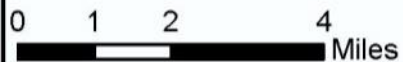
Santa Monica Bay

NSMBCW Agencies:

City of Malibu (Lead)

County of Los Angeles

Los Angeles County Flood Control District



NSMBCW is Unique

- Minimally (7%) developed
- Substantial State Park and federal land
- Only nine “major” MS4 outfalls
- Bacteria is the primary watershed-wide controlling pollutant



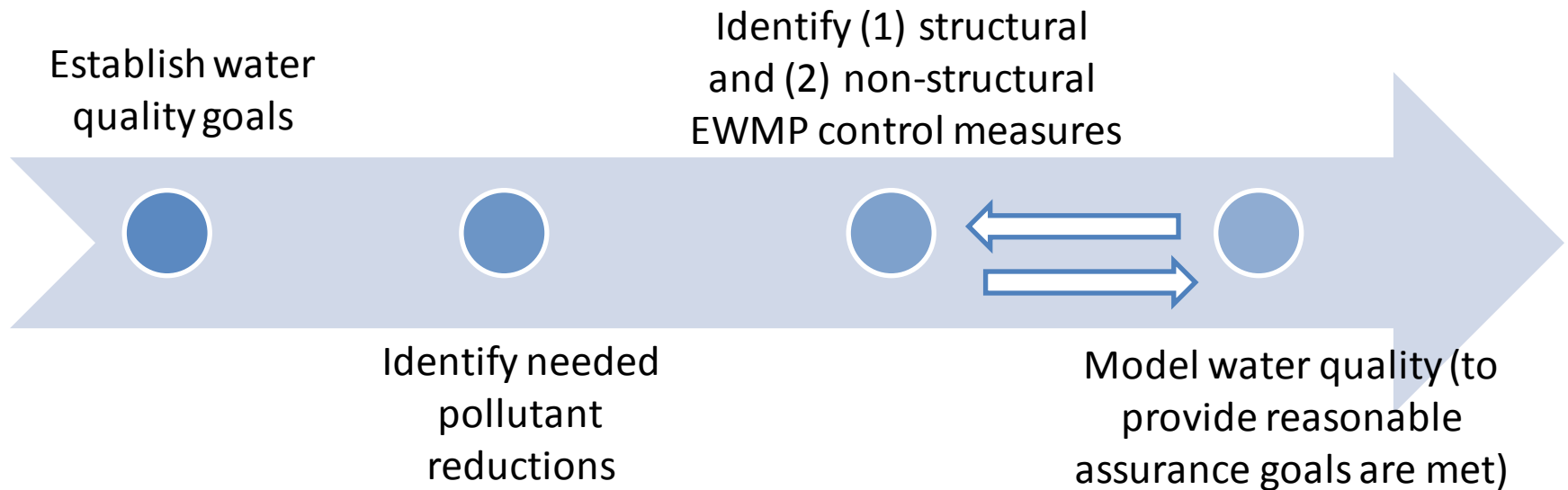
Stakeholder Outreach

- **Public Workshops:** informational presentations and Q&A
- **Website:** information and documents posted at www.malibucity.org/EWMP
- **Technical Advisory Committee:** active participation in the TAC and RAA subcommittee
- **Outreach to City and County Departments as well as elected officials**

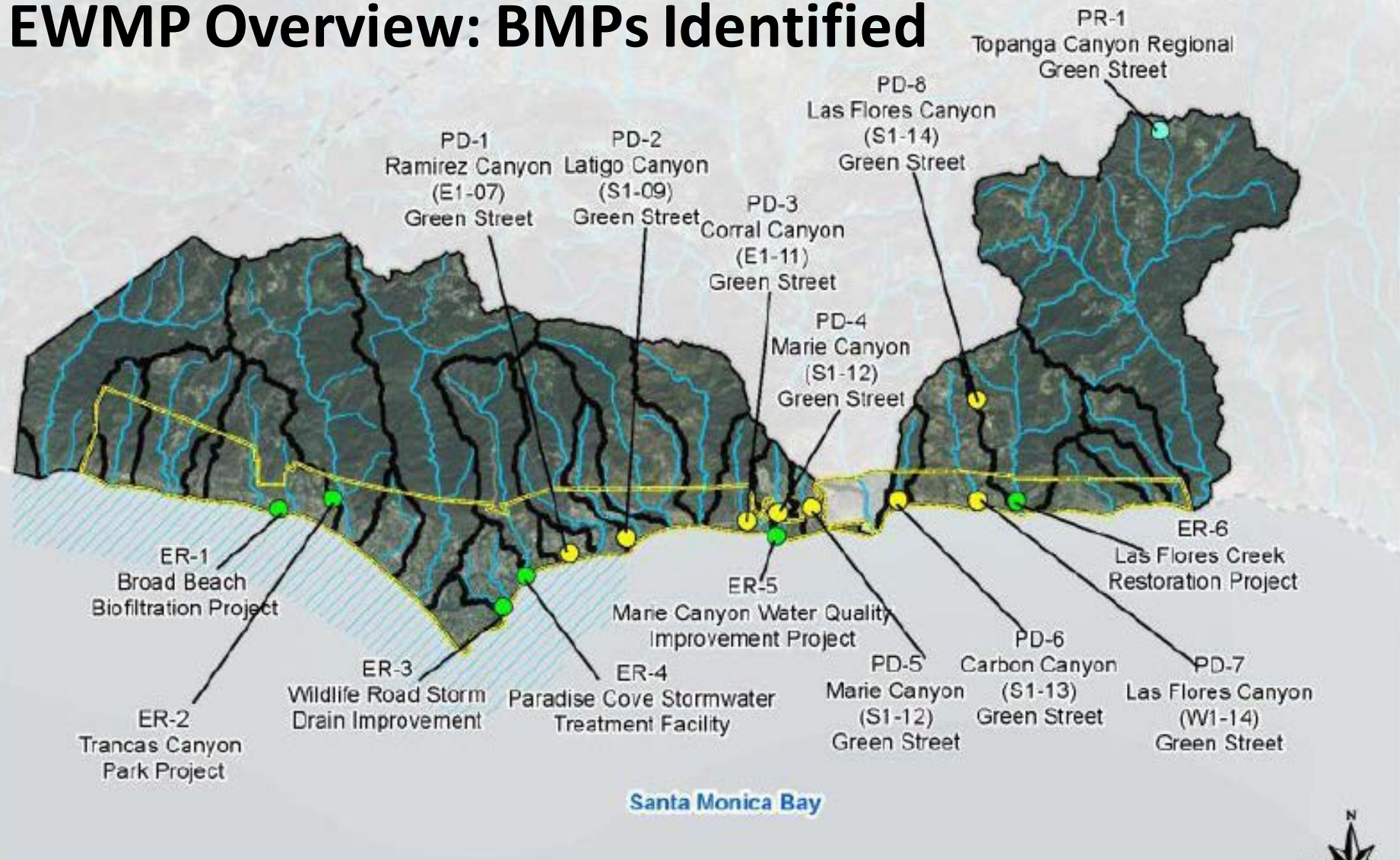




EWMP Overview: Reasonable Assurance Analysis



EWMP Overview: BMPs Identified



Legend

● BMP Location		ASBS*
● Existing Regional BMP		City of Malibu Boundary
● Proposed Distributed BMP		LA County Boundary
● Proposed Regional BMP		Water Body
		Minor Streams
		Analysis Region Boundary

*ASBS boundary is in the ocean up to the mean high tide line



Figure 22.
BMP Locations in Santa Monica Bay Watershed.
NSMBCW EWMP

June 2015

Non-Structural and Institutional BMPs




Environmental Sustainability Department
 Clean Water Team

Together, we can make a difference 

Bu's Tips
For Horse Owners




CITY OF MALIBU
 WWW.MALIBUCITY.ORG



Environmental Sustainability Department

Clean Water Team
Together, we can make a difference.

Bu's Tips for Irrigation and Preventing Runoff



CITY OF MALIBU
 WWW.MALIBUCITY.ORG



MALIBU LEGACY PARK PROJECT

FULFILL A DREAM, LEAVE A LEGACY

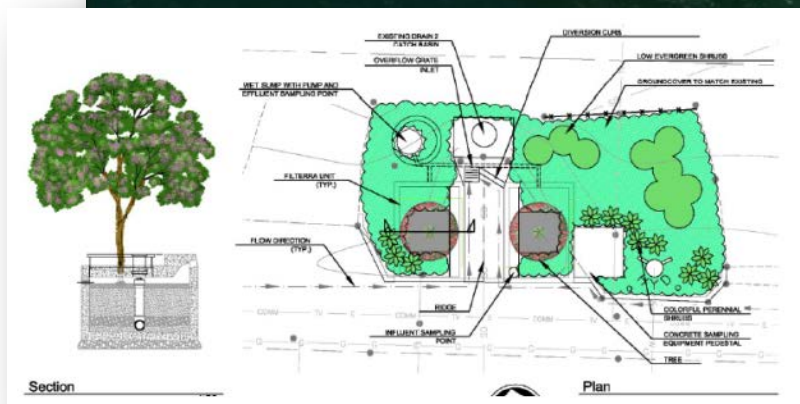
- Regional EWMP Project
- 306 acre Civic Center area
- Stormwater capture, disinfection and use
- Multi-benefit: habitat, public education, neighborhood greening, and recreation
- Upgrading to increase capacity/area



MALIBU LEGACY PARK: A WALK THROUGH THE PARK

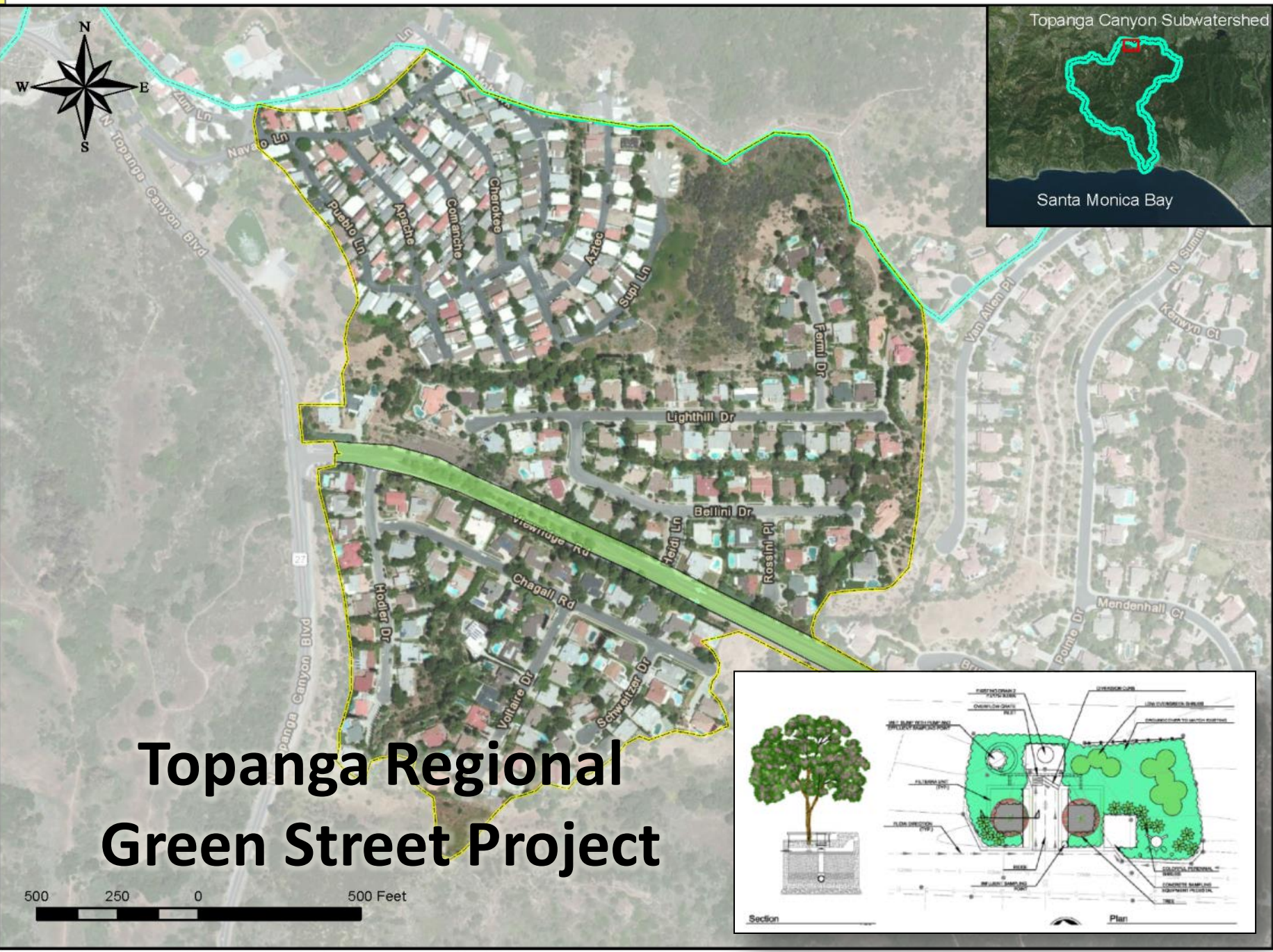


Early Action Projects Being Completed This Year (2015)

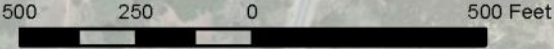


☒ Catch basin (city-owned)





Topanga Regional Green Street Project



Areas Requiring Future Green Street Projects Based on RAA



LID Ordinance and Green Streets Policy

City and County have both adopted theirs

ATTACHMENT A: DRAFT LID ORDINANCE

ORDINANCE NO. _____

An ordinance amending [MUNICIPAL CODE SECTION REFERENCE(S)] of the [CITY NAME] Municipal Code to expand the applicability of the existing [NAME OF POST-CONSTRUCTION REQUIREMENTS – LIKELY “SUSMP” FOR MOST MUNICIPALITIES] requirements by imposing Low Impact Development (LID) strategies on projects that require

City of Malibu Green Street Policy

Purpose

The City of Malibu Public Works Department shall implement green street BMPs for transportation corridors associated with new and redevelopment street and roadway projects, including Capital Improvement Projects (CIPs). This policy is enacted to demonstrate compliance with the NPDES MS4 Permit for the Los Angeles Region (Order No. R4-2012-0175).

Green streets are an amenity that provides many benefits including water quality improvement, groundwater replenishment, creation of attractive streetscapes, creation of parks and wildlife habitats, and pedestrian and bicycle accessibility. Green streets are defined as right-of-way areas that incorporate infiltration, biofiltration, and/or storage and use BMPs to collect, retain, or detain stormwater runoff as well as a design element that creates attractive streetscapes.

Policy

- A. Application. The Public Works Department shall require new development and/or redevelopment streets and roadway projects and CIP projects conducted within the right-of-way of transportation corridors to incorporate green street BMPs. Transportation corridors projects where the construction costs are >\$500,000. Routine maintenance or repair and linear utility projects are excluded from these requirements. Routine maintenance includes slurry seals, repaving, and reconstruction of the road or street where the original line and grade are maintained and new impervious surface is not added.
- B. Amenities. The Public Works Department shall consider opportunities to replenish groundwater, create attractive streetscapes, create parks and wildlife habitats, and provide pedestrian and bicycle accessibility through new development and redevelopment of streets and roadway projects and CIPs.
- C. Guidance. The Public Works Department shall use the City of Los Angeles Green Streets guidance, USEPA's *Managing Wet Weather with Green Infrastructure Municipal Handbook: Green Streets*, or equivalent guidance for use in public and private developments.
- D. Retrofit Scope. The Public Works Department shall use the City's Watershed Management Program or Enhanced Watershed Management Program to identify opportunities for green street BMP retrofits. Final decisions regarding implementation will be determined by the [CITY ENGINEER] based on the availability of adequate funding.
- E. Training. The Public Works Department shall incorporate aspects of green streets into internal annual staff trainings.

¹ EPA-833-F-08-009, December 2008.

authorized by Article XI, §5 and §7 of the State Constitution to of the State by adopting regulations to promote public health, prosperity.

authority under the California Water Code to adopt and enforce conditions, restrictions and limitations with respect to any activity quality of waters of the State.

under the "Waste Discharge Requirements for Municipal Separate §4) Discharges within the Coastal Watersheds of Los Angeles Discharges Originating from the City of Long Beach MS4," issued by the Water Quality Control Board--Los Angeles Region." (Order No. CAS004001), as well as Waste Discharge Requirements under the Municipal NPDES permit"). In order to participate in a Watershed Management Program, the Municipal permittees to develop and implement a LID Ordinance.

applied an integrated approach to incorporate wastewater and recycled water management into a single strategy through its plan.

committed to a stormwater management program that protects water supply by employing watershed-based approaches that balance environmental and economic considerations.

increased impervious surface areas resulting in increased water runoff to groundwater aquifers causing the transport of pollutants to waters.

is to take a new approach to managing rainwater and urban runoff to reduce the negative impacts of development and urbanization.



Financial Strategy

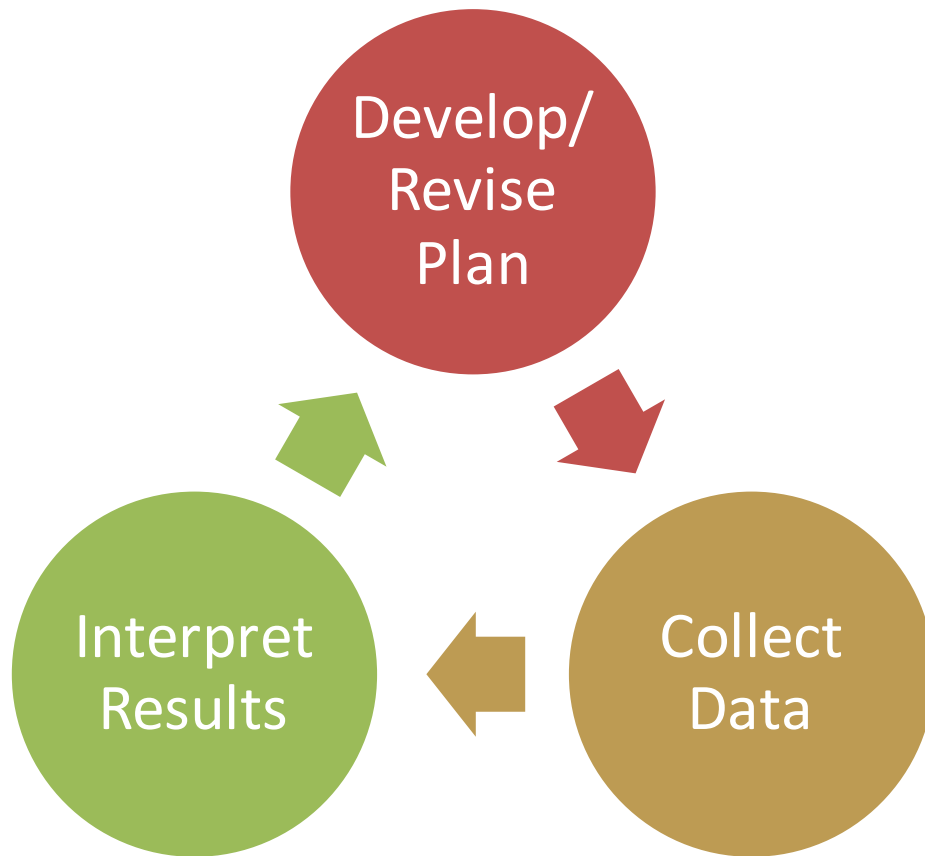
Potential funding strategies identified:

- Enhanced Infrastructure Financing Districts
- State Revolving Fund Loans
- Traditional Infrastructure Bonds
- Proposition 1 Grants
- IRWM Grants
- Climate Change/Greenhouse Gas Emission Funding
- Stormwater Fees
- Collaborative Opportunities with Other Agencies
- Public/Private Partnerships





Adaptive Management





THANK YOU

Questions/Comments