

Los Angeles Regional Water Quality Control Board



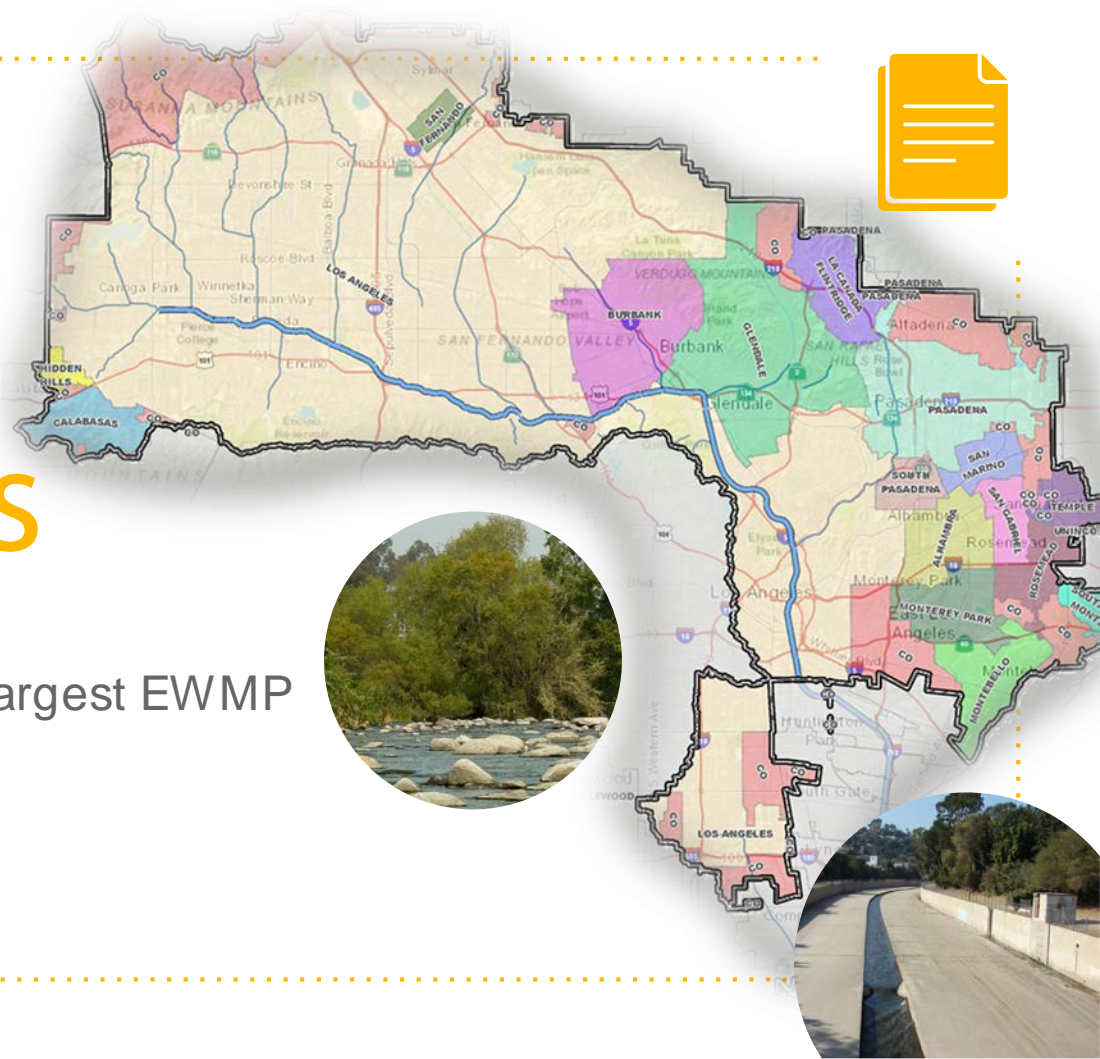
Upper LA River EWMP

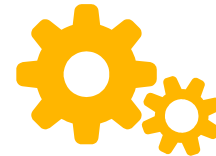
Dawn Petschauer, City of LA

May 10, 2018

Stats & Numbers

- 19 participating agencies
- 485 sq miles (approx.) – largest EWMP
- 21 waterbodies
- Diverse hydrology





Our growth



Implementation

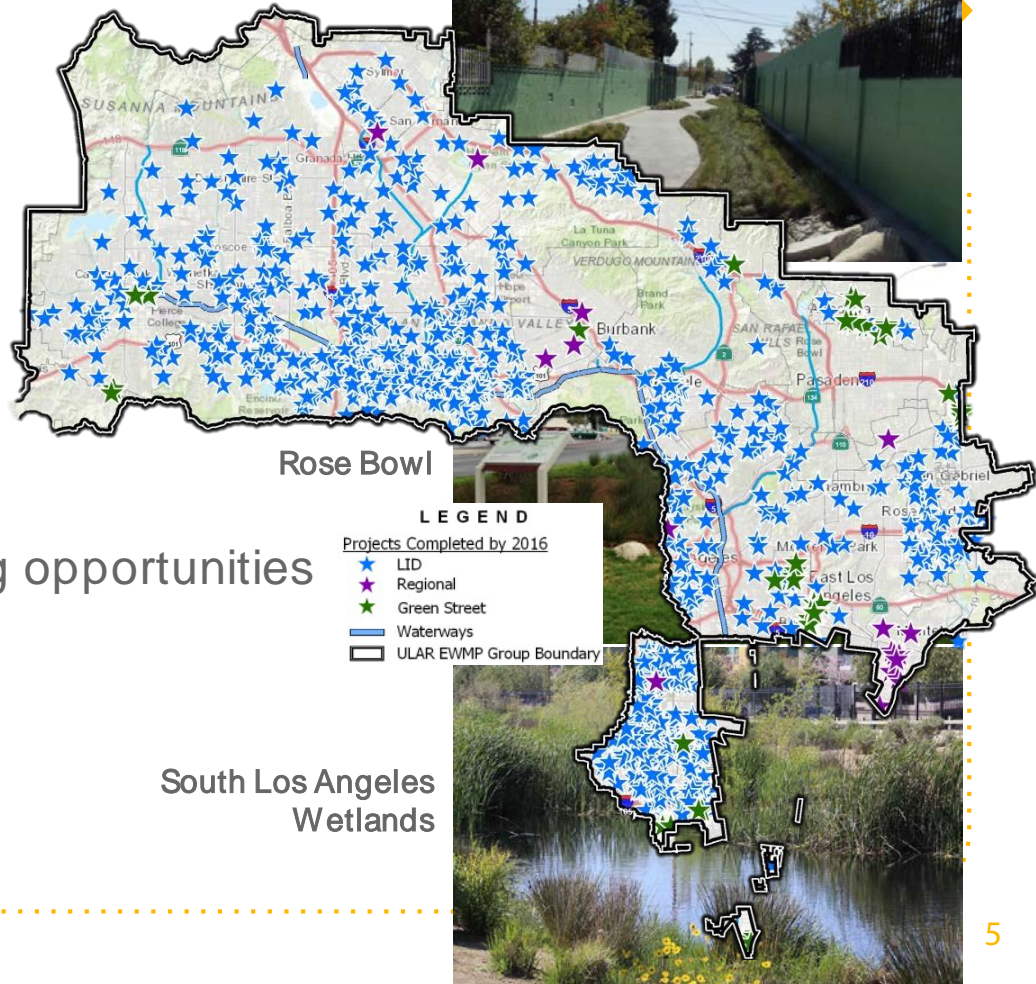


Pre-EW MP Projects

ULAR EW MP

Early Projects

- Agencies actively pursuing opportunities
- Green Streets
- Low Impact Development
- City of LA – Prop O





Trash TMDL

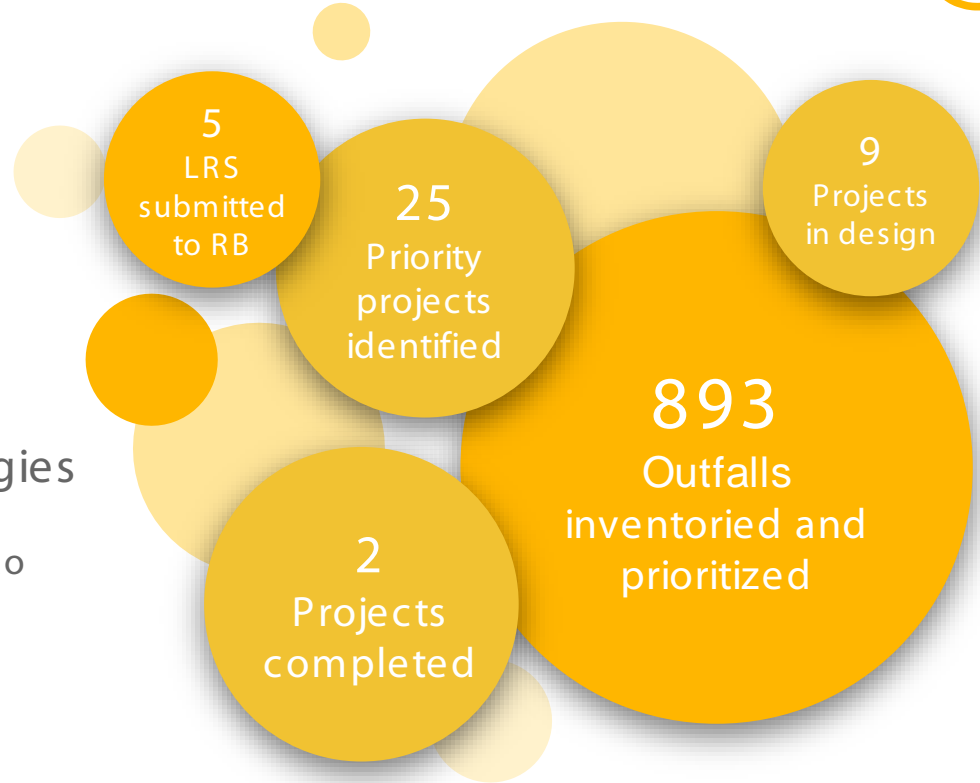
- ~70K+ catch basins retrofitted
- Myriad of structural controls
- New technologies
- Institutional measures
- Enhanced MCMs
- In-River monitoring





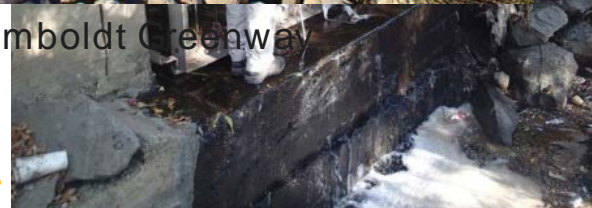
Bacteria TMDL

- Phased Approach
- Load Reduction Strategies
 - LA River Segment B
 - Arroyo Seco / Rio Hondo
 - LA River Segment E
 - Compton Creek



Bacteria TMDL

- Outfall Screening
- Prioritization
- Projects



LA City Humboldt Greenway

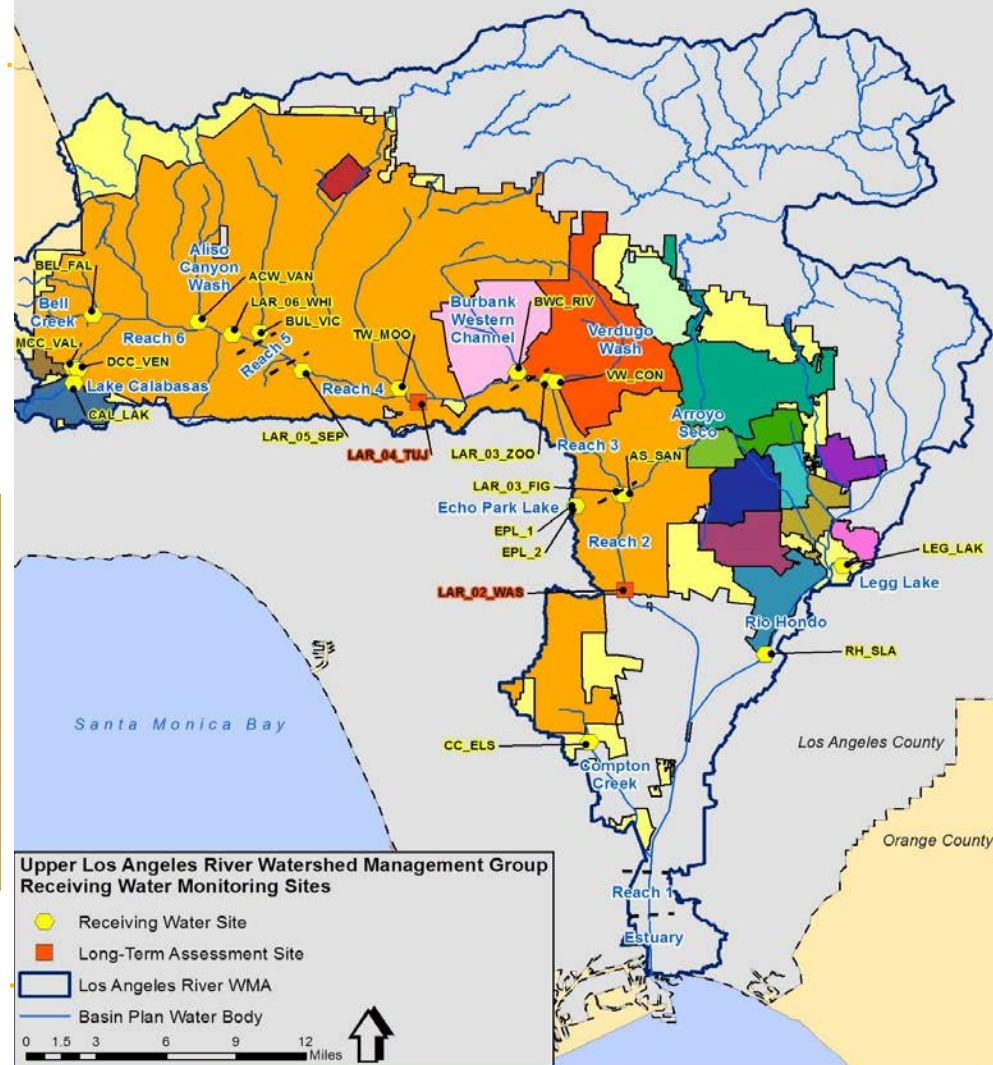


Watershed Monitoring

ULAR EWMP

Watershed Monitoring

Station Type	# of monitoring locations	Automated sampling stations (wet weather)
Main Stem RW	6 (2 ME sites)	4
Tributary RW	11	N/ A
Lakes	3	N/ A
SWO	12	12
Total	32	16





Storm Event Monitoring Prep

Watershed Monitoring

NSWO Screening and Monitoring Progress



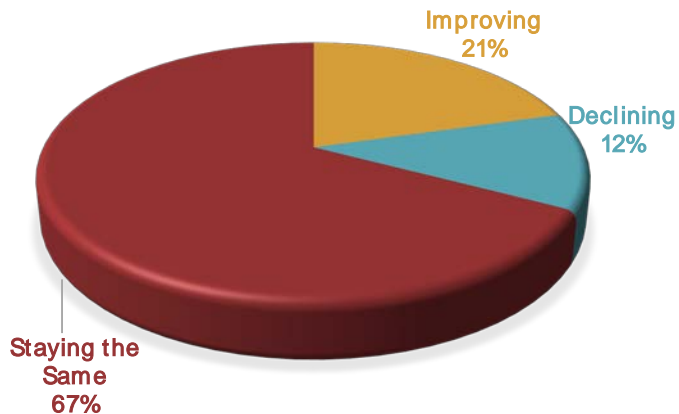
Summary of Non-Storm Water Based Screening and Monitoring Program

Receiving Water	No. of Outfalls	No. of Screening Events Since Dec 28, 2012	Significant Non-Storm Water Discharges	
			Total Confirmed	Total No. Being Monitored
Rio Hondo	29	6	2	2
Alhambra Wash	188	6	4	4
Arcadia Wash	30	6	0	0
Eaton Wash	175	6	1	1
Rubio Wash	99	6	0	0
Arroyo Seco	194	6	4	4
Compton Creek	84	6	2	2
Segment E	96	6	5	5
Aliso Canyon Wash	84	2	TBD	TBD
Bell Creek	56	2	TBD	TBD
Dry Canyon Creek	31	2	TBD	TBD
McCoy Canyon Creek	18	2	TBD	TBD
Total	1084	56	18	16

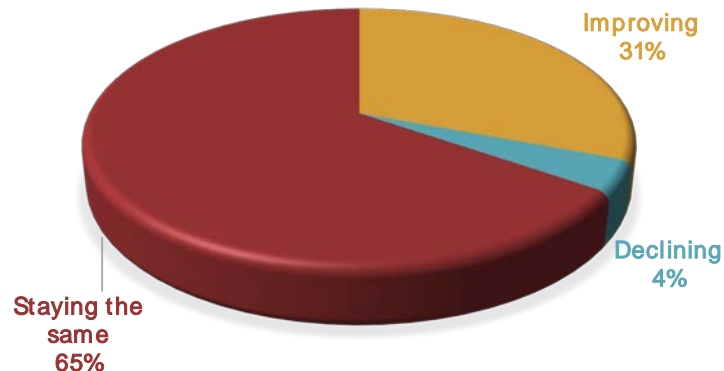


Watershed **Monitoring** **Water Quality** Trends Analysis

DRY WEATHER



WET WEATHER





Post-EWMP Projects

ULAR EWMP



The Projects

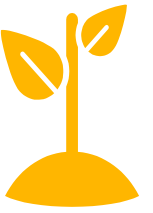
- Reinvigorated “multi-benefit projects”
- New grant programs prioritized water quality, greening, & DAC
- New opportunities identified



Glendale Green Street



San Fernando Regional Park

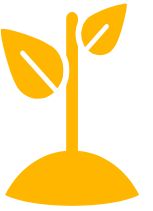


The Projects

- 21 ac-ft of runoff
- Enhanced recreational space
- Urban greening
- Aesthetic beautification
- Groundwater recharge

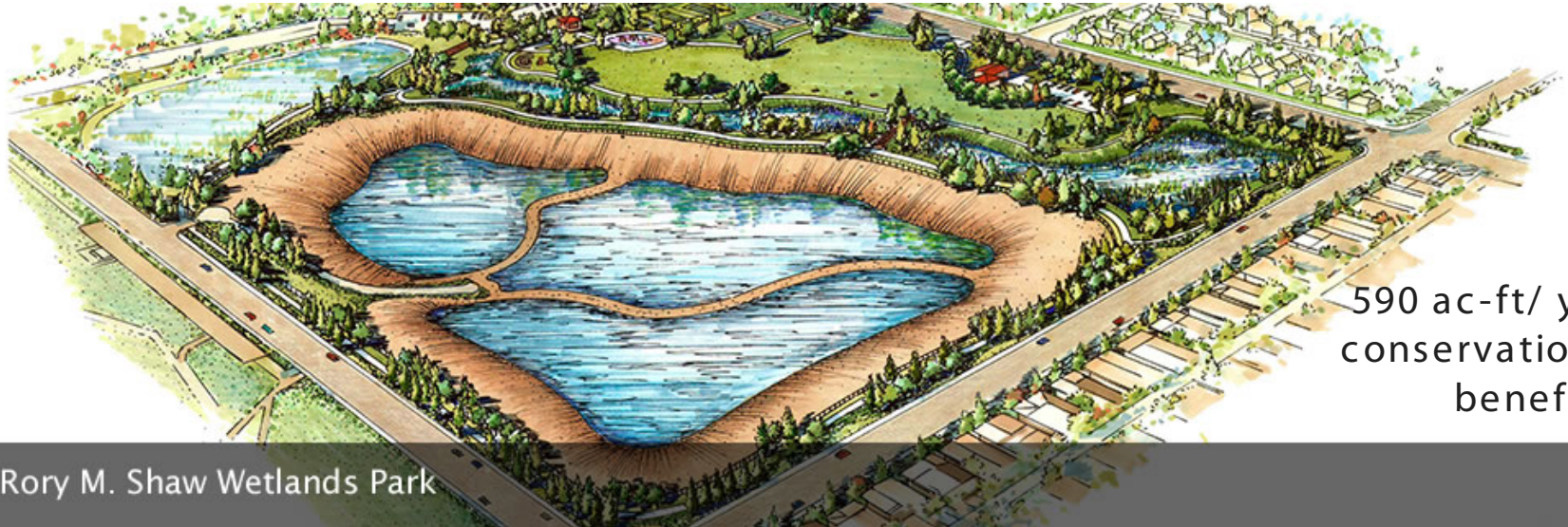


East Los Angeles Sustainable Median Stormwater Capture Project



The Projects

- Create 21-acre detention pond
- Create 10-ac wetlands
- Create 15-ac recreational space
- Create new aquatic/ riparian habitat
- Groundwater recharge



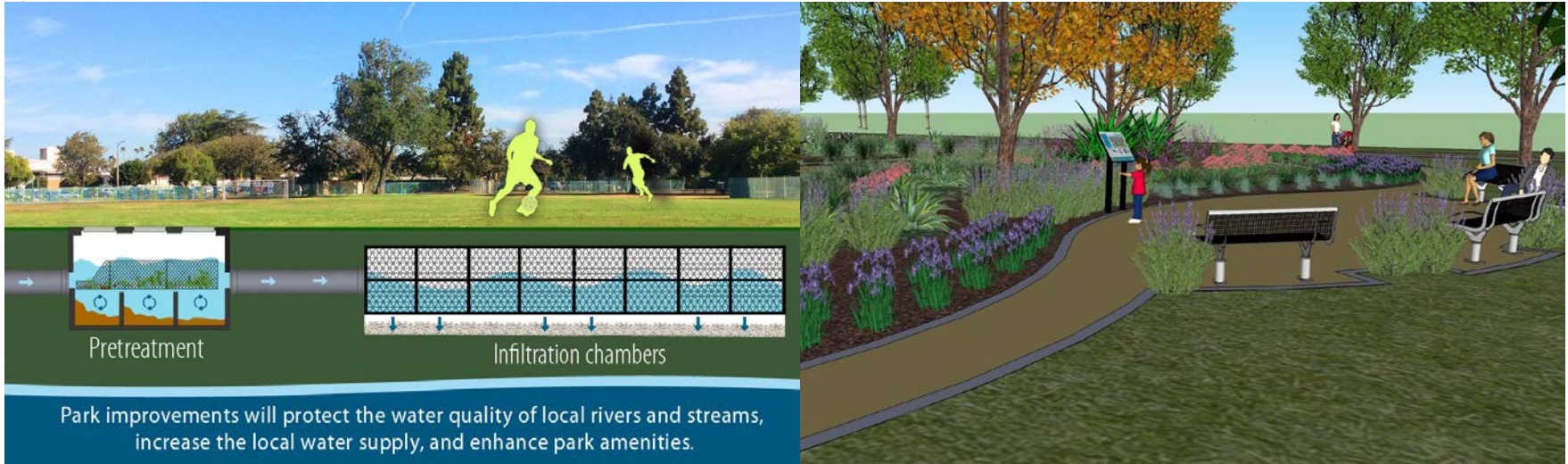
590 ac-ft/ yr
conservation
benefit

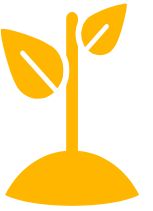
Rory M. Shaw Wetlands Park



The Projects

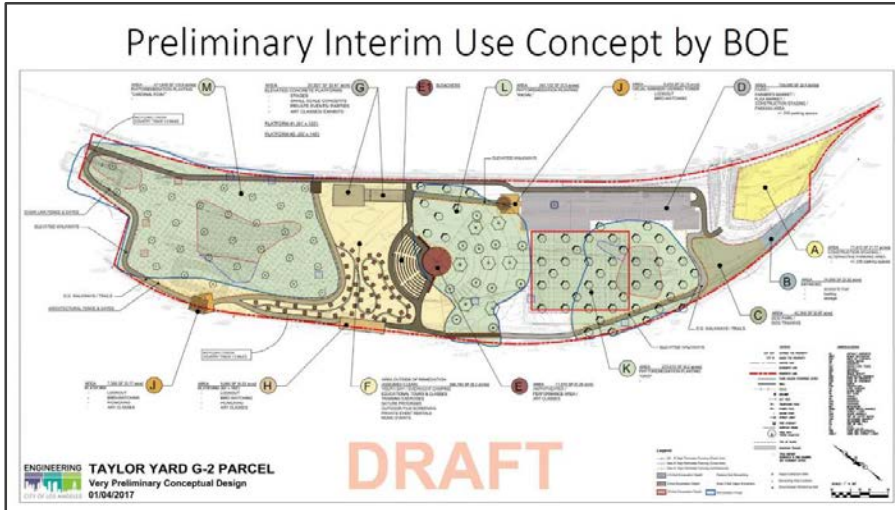
- 8 ac-ft of runoff and dry weather flows
- Enhanced recreational space
- Groundwater recharge





The Projects

- 42 acre green space
- Extensive habitat restoration
- Diverting (3) stormdrains from 4600 ac drainage are for treatment and potential reuse





The Projects

Almanson Park

- 31 ac-ft of runoff
- Capture and reuse
- Groundwater recharge



The Projects



Avalon Green Alley North

- 2 ac-ft of runoff
- Pedestrian connectivity
- Groundwater recharge



The Projects



Avalon Green Alley South

- 4.1 ac-ft of runoff
- Pedestrian connectivity
- Groundwater recharge



The Projects



Branford Street Dry Well Project

- 18 ac-ft of runoff
- Enhanced flood control



The Projects



Broadway Neighborhood Greenway

- 41 ac-ft of runoff
- Enhanced flood control
- Groundwater recharge



The Projects



Calabasas City- Wide Green Street Project

- 6 ac-ft of runoff
- Urban greening
- Groundwater recharge





The Projects



Desiderio Park

- 3.8 ac neighborhood park
- Infiltration of on-site runoff
- Reduce localized flooding
- New habitat and recreational green space



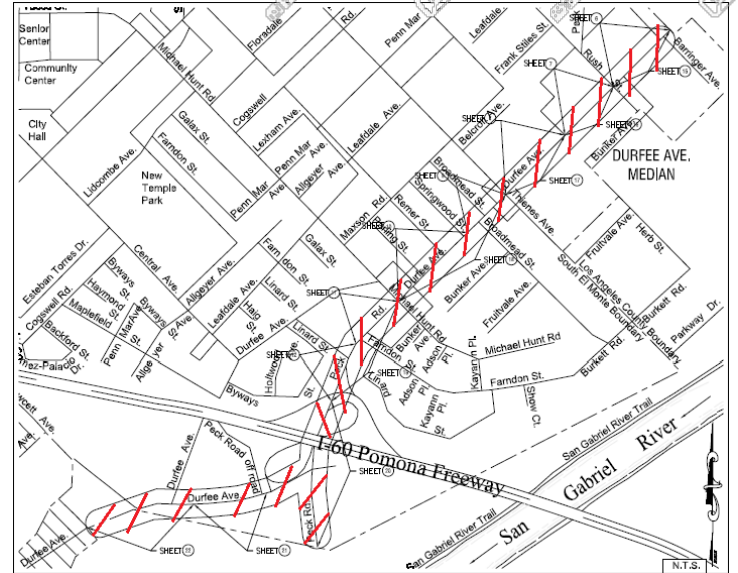


The Projects



Durfee Avenue Street and Median Improvement Project

- Bioretention areas for runoff
- Urban greening
- Pedestrian connectivity/ safety





The Projects

Eaton Wash LFD

- LFD to route dry weather flows to Water Reclamation Plant
- Water Conservation

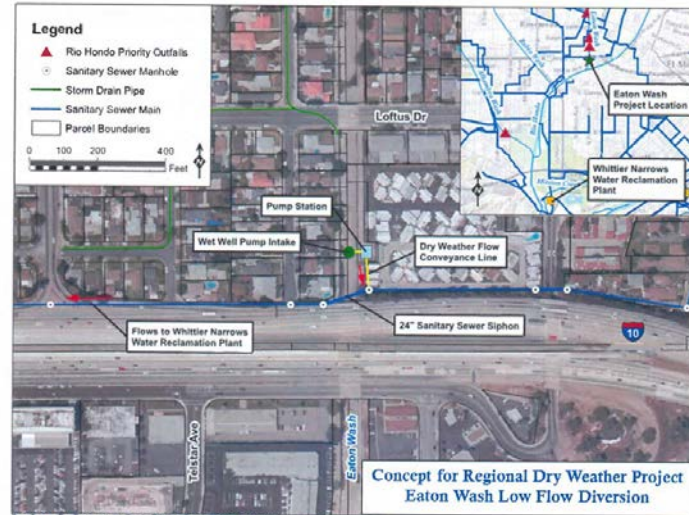


Figure 5. Eaton Wash Regional Dry Weather Project: Low Flow Diversion Conceptual Layout

The Projects



Echo Park Lake Rehabilitation

- 305 ac-ft of runoff
- Capture and treatment
- Reduced localized flooding
- Enhanced aquatic habitat



The Projects



Elmer Avenue Green Street

- 16 ac-ft of runoff
- Enhanced flood control
- Groundwater recharge
- Urban greening

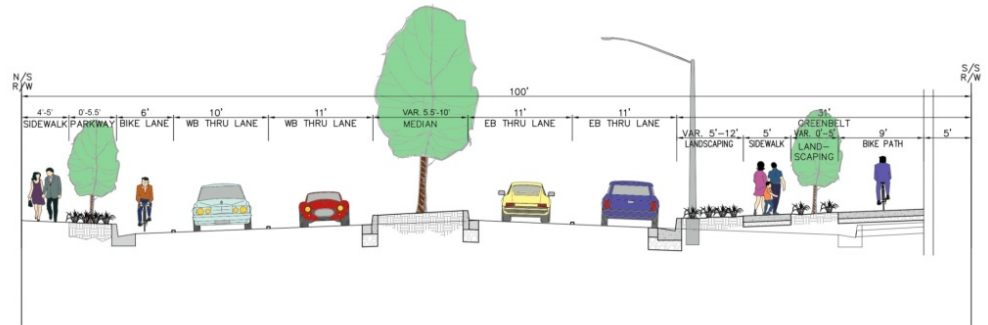




The Projects

Foothill Boulevard Link Bikeway & Greenbelt Project

- Stormwater capture and infiltration
- Urban greening
- Enhanced pedestrian connectivity



The Projects



Garvanza Park Stormwater Capture Project

- 50 ac-ft of runoff
- Capture and reuse
- Water conservation



The Projects



Glenoaks-Sunland Stormwater Capture

- 28 ac-ft of runoff
- Enhanced flood control
- Urban Greening

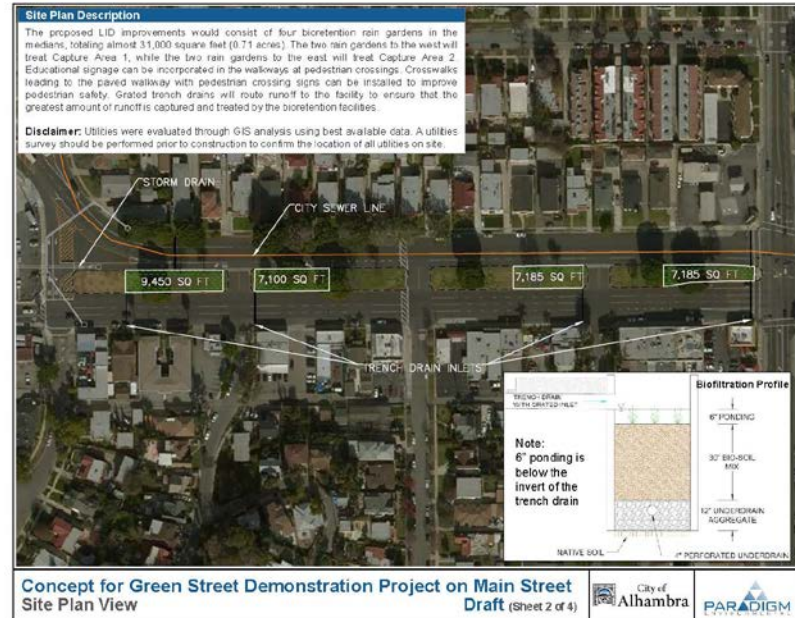




The Projects

Green Street Demonstration Project

- (4) Bioretention rain gardens
- Urban greening



The Projects



Hansen Dam Wetlands Restoration

- 31 ac-ft of runoff
- Restored habitat
- Enhanced green space
- Groundwater recharge

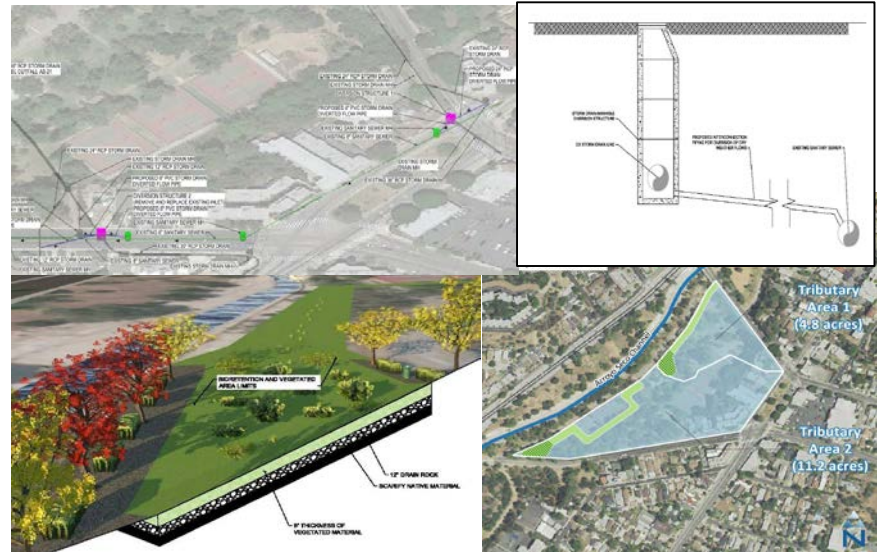




The Projects

Hermon Dog Park

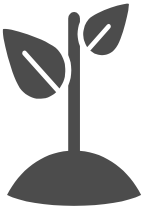
- LFD dry weather flows to sewer
- Treat wet weather flows through bioretention areas
- Urban greening
- Water conservation



The Projects

Laurel Canyon Boulevard Green Street

- 50 ac-ft of runoff
- Enhanced flood control
- Urban Greening



The Projects



LA Zoo Parking Lot Retrofit

- 25 ac-ft of runoff
- Reduce localized flooding
- Reduce “heat island” effect



The Projects



Manchester Greenway

- 2 ac-ft of runoff
- Water conservation
- Improved public health



The Projects



Marshall Community Park

- New recreational park space and habitat
- Reduce localized flooding
- Reduce “heat island” effect

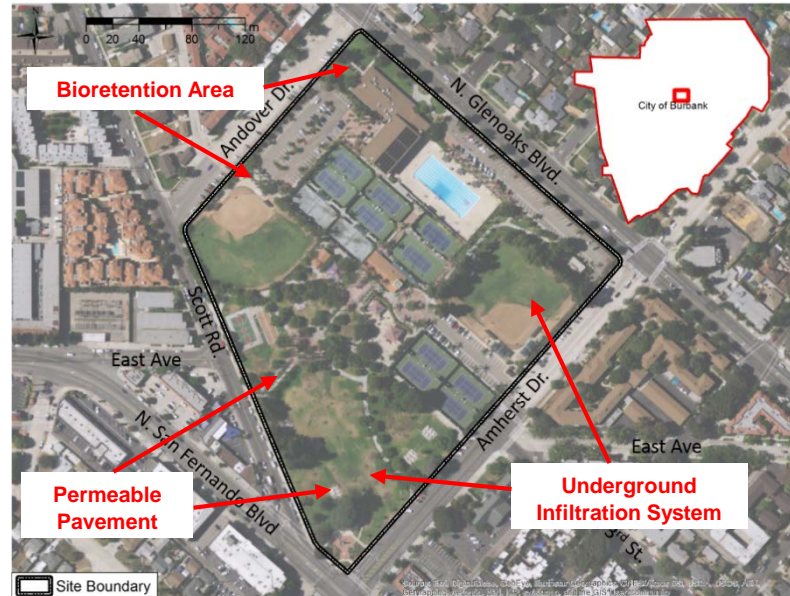




The Projects

McCambridge Park

- 26 ac-ft of runoff
- Enhanced habitat
- Groundwater recharge





The Projects

Montebello Boulevard

- Bioretention and treatment of runoff
- Urban greening
- Enhanced pedestrian connectivity





The Projects

Montezuma Avenue

- Bioretention rain garden
- Enhanced recreational green space



The Projects



North Hollywood Green Alley

- 14 ac-ft of runoff
- Water conservation
- Improved public health



The Projects



North Atwater Creek Restoration

- 39 ac-ft of runoff
- Streambed restoration
- Enhanced open space/ habitat



The Projects



Oros Green Street

- 3 ac-ft of runoff
- Reduced localized flooding
- Pre-treatment to LA River

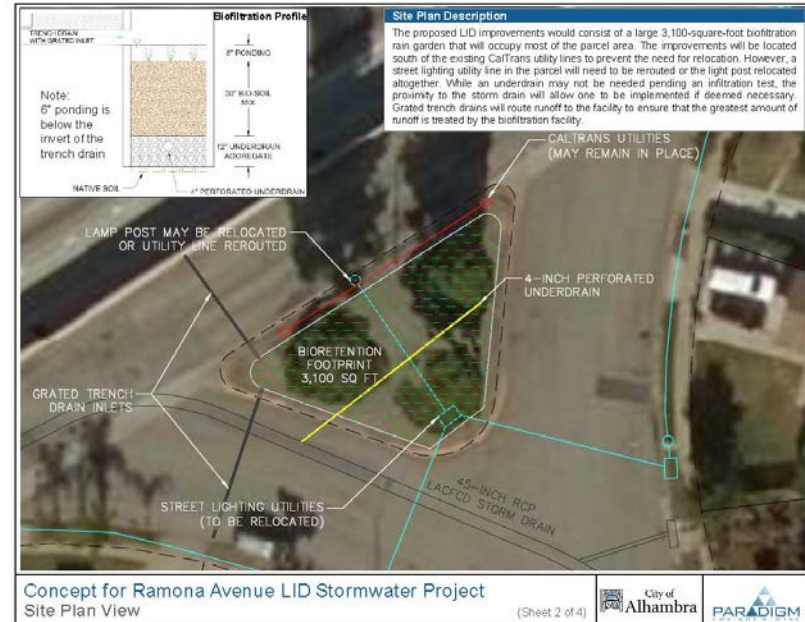




The Projects

Ramona Avenue

- Bioretention rain garden
- Urban greening



The Projects



Ramona Rain Gardens

- 1 ac-ft of runoff
- Water conservation
- Improved public health



The Projects



Riverdale Avenue Green Street

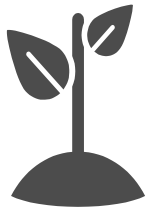
- 14 ac-ft of runoff
- Water conservation
- Improved public health



The Projects

Rosemead Boulevard Safety and Beautification

- Bio retention of runoff
- Urban greening
- Aesthetic beautification





The Projects

Rubio Wash LFD

- LFD to route dry weather flows to Water Reclamation Plant
- Water Conservation

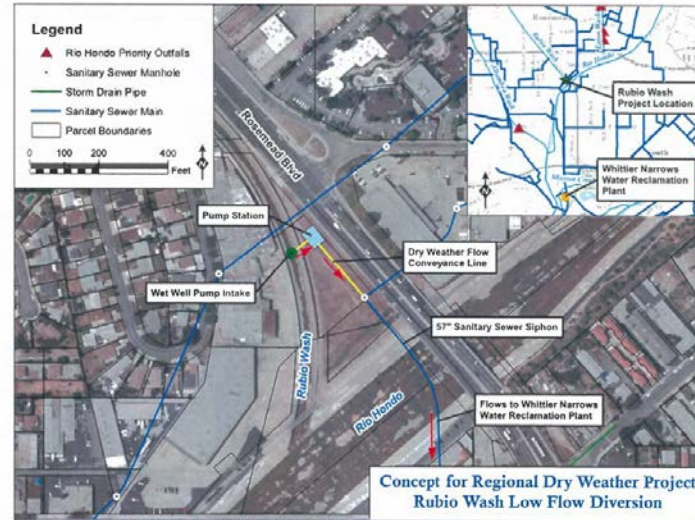


Figure 4. Rubio Wash Regional Dry Weather Project: Low Flow Diversion Conceptual Layout

The Projects



Sun Valley Park Stormwater Infiltration Project

- 30 ac-ft of runoff
- Reduce localized flooding
- Groundwater recharge
- Enhanced green space and habitat



The Projects



Temple City Parking Lot Retrofit

- On-site LID
- Urban greening
- Aesthetic beautification



The Projects



Woodman Avenue Median Green Street

- 46 ac-ft of runoff
- Reduce localized flooding
- Water conservation





Looking Ahead

ULAR EW MP



Regional Permit

Monitoring

Identify, based on lessons learned, monitoring program elements for optimization

Synchronicity

Enhance regulatory correlation among the various Regional/ State permits impacting water quality

Watershed-specific metrics

Recognize uniqueness of the various watersheds and provide allowances for compliance reporting metrics

Implement • Learn • Rework



Upper Los Angeles River W MG

The hard working agency staff and consultants of the ULAR W MG





Thanks!

Any questions?

You can find me at dawn.petschauer@lacity.org