

**SAFE
CLEAN
WATER
PROGRAM**




Water Resiliency Challenges

A circular inset image showing a concrete drainage grate with a metal mesh, set against a background of a dry, cracked landscape. A dark semi-transparent box with white text is overlaid on the image.

Pollution

A circular inset image showing a weather station or sensor in a field of dry, cracked earth. A dark semi-transparent box with white text is overlaid on the image.

Climate Change

A circular inset image showing a street with a concrete curb and a utility pole, set against a background of a dry, cracked landscape. A dark semi-transparent box with white text is overlaid on the image.

Fractured Jurisdiction

A circular inset image showing a wide, deep, dry riverbed or channel, set against a background of a dry, cracked landscape. A dark semi-transparent box with white text is overlaid on the image.

Reliance on Imported Water

A circular inset image showing a large concrete dam or reservoir, set against a background of a dry, cracked landscape. A dark semi-transparent box with white text is overlaid on the image.

Limited Infrastructure



Regional Issue... Regional Approach

**CAPTURE
CLEAN
CONSERVE**

1

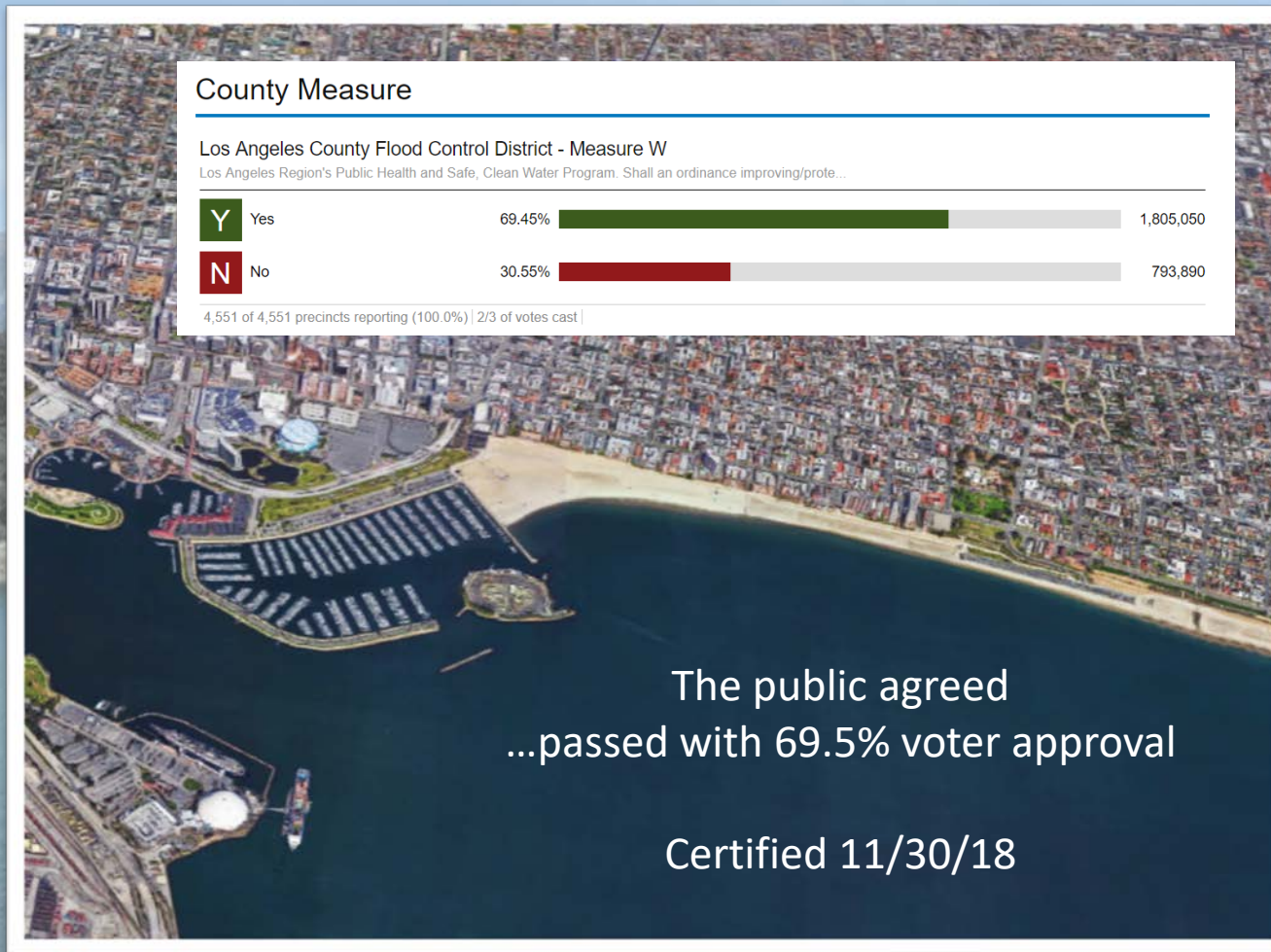
Improve Water Quality



2 Increase Local Water Supply



3 Enhance Communities





Six Core Service Areas

Development Services
Emergency Management

Public Buildings
Transportation

Environmental Services
Water Resources

LA County Flood
Control District

Other Districts
& Programs

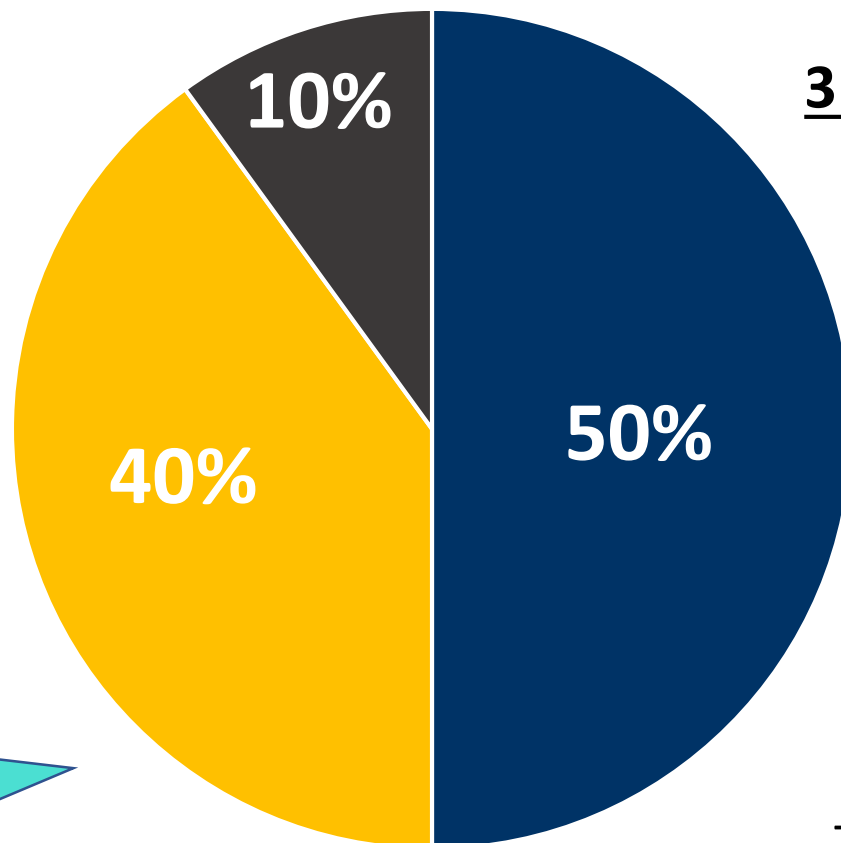




Safe, Clean Water Program Fund Allocation

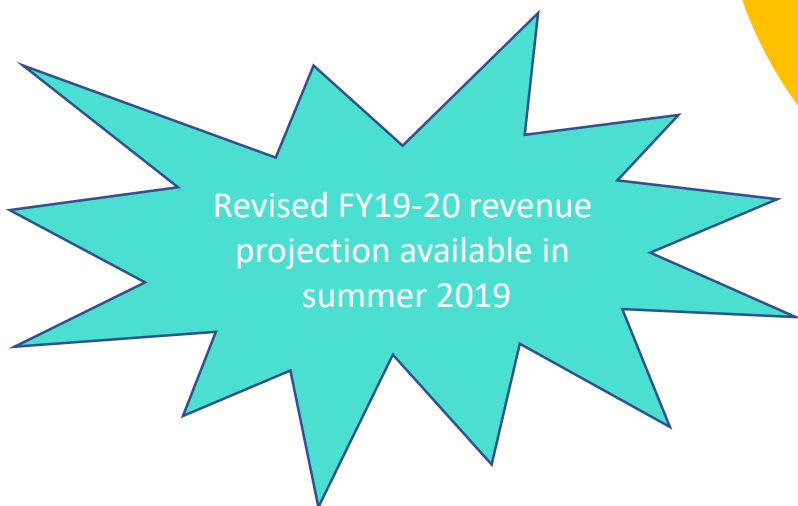
Parcel tax

- 2.5 cents per square foot of impermeable area
- Watershed-based Projects
- Local & Regional Projects



3 programs to be implemented:

- Regional Program
(50% ~ \$150M annually)
(\$750M in first 5 years)
- Municipal Program
(40% ~ \$120M annually)
(\$600M in first 5 years)
- FCD Program
(10% ~ \$30M annually)
(\$150M in first 5 years)



Total Program: Up to \$300M annually
or
Up to \$1.5 Billion in first 5 years

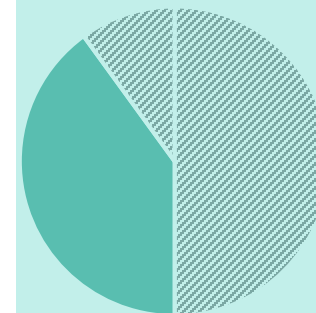


Safe, Clean Water Program



50% of total revenue collected within each City goes to the Watershed Area (Regional Program)

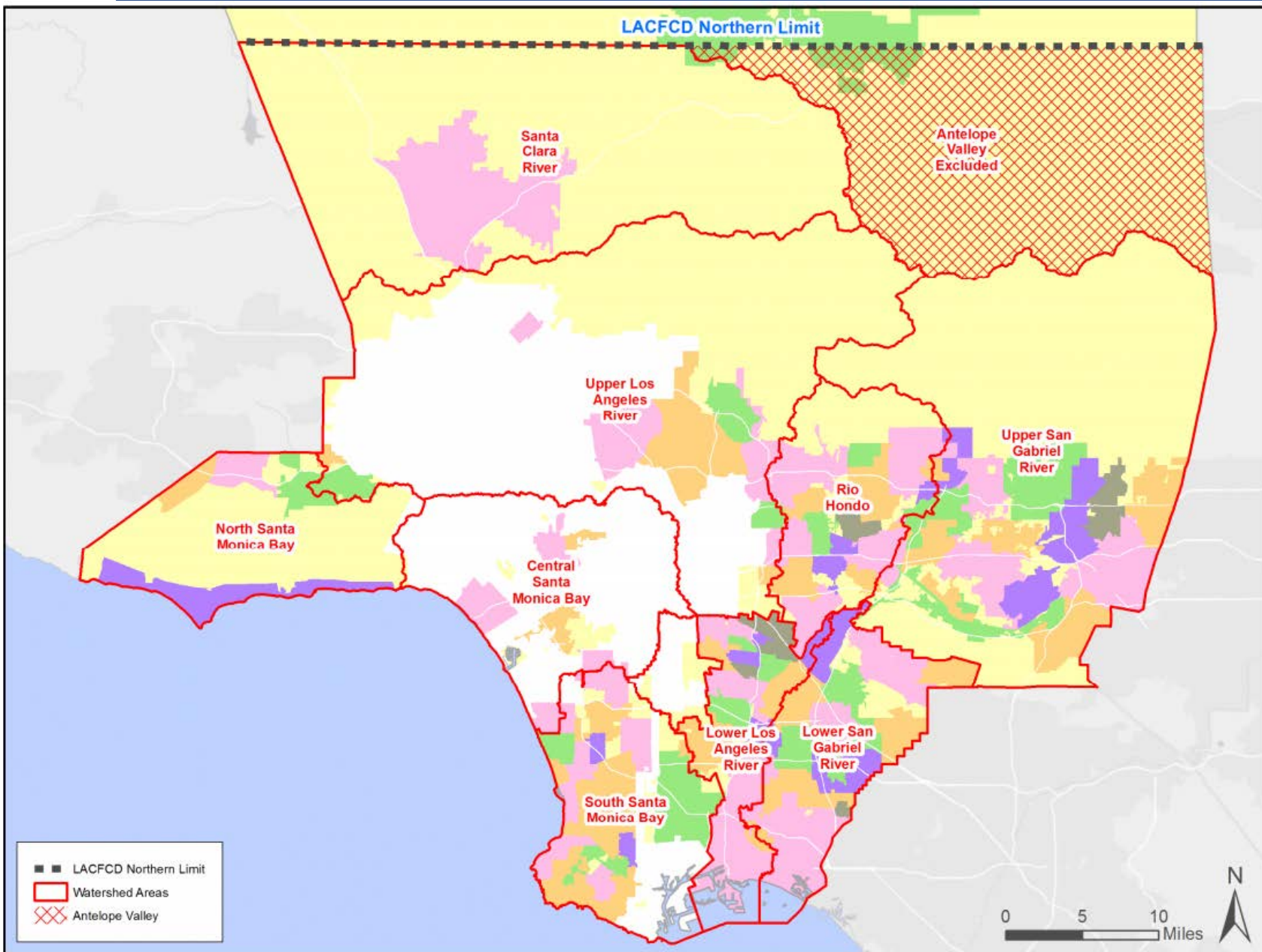
WATERSHED AREA	EST. MAX ANNUAL ALLOCATION
Central Santa Monica Bay	\$18.1 Million
Lower Los Angeles River	\$13.9 Million
Lower San Gabriel River	\$17.4 Million
North Santa Monica Bay	\$2.2 Million
Rio Hondo	\$12 Million
Santa Clara River	\$7.1 Million
South Santa Monica Bay	\$19.5 Million
Upper Los Angeles River	\$39.9 Million
Upper San Gabriel River	\$20.1 Million



40% of total revenue collected within each City goes back to the City (Municipal Program)



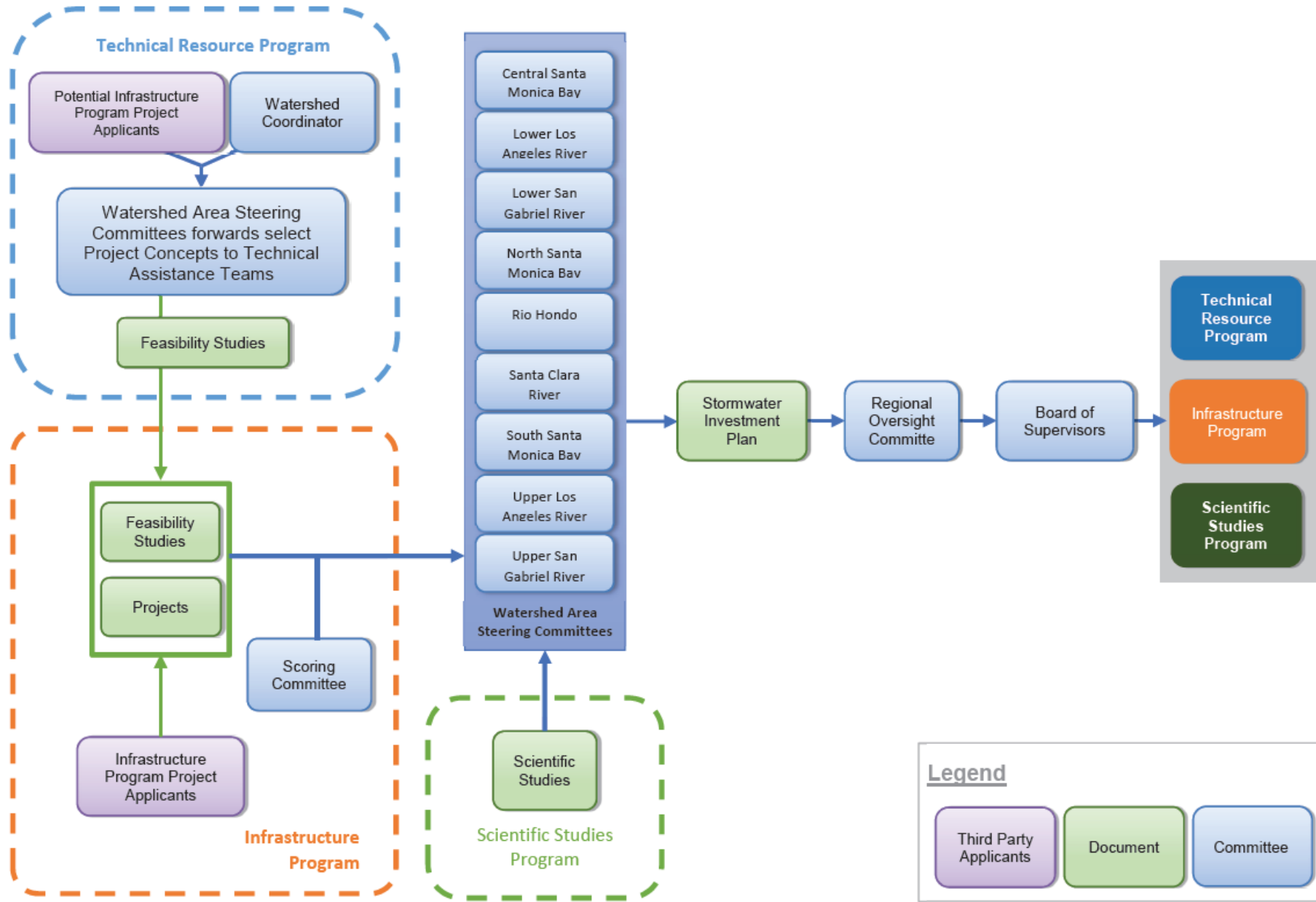
Watershed Areas



- Central Santa Monica Bay
- Lower Los Angeles River
- Lower San Gabriel River
- North Santa Monica Bay
- Rio Hondo
- Santa Clara River
- South Santa Monica Bay
- Upper Los Angeles River
- Upper San Gabriel River



Regional Program Flow Chart





Regional Program-Watershed Area Steering Committee Membership

- Central Santa Monica Bay
- Lower Los Angeles River
- Lower San Gabriel River
- North Santa Monica Bay
- Rio Hondo
- Santa Clara River
- South Santa Monica Bay
- Upper Los Angeles River
- Upper San Gabriel River

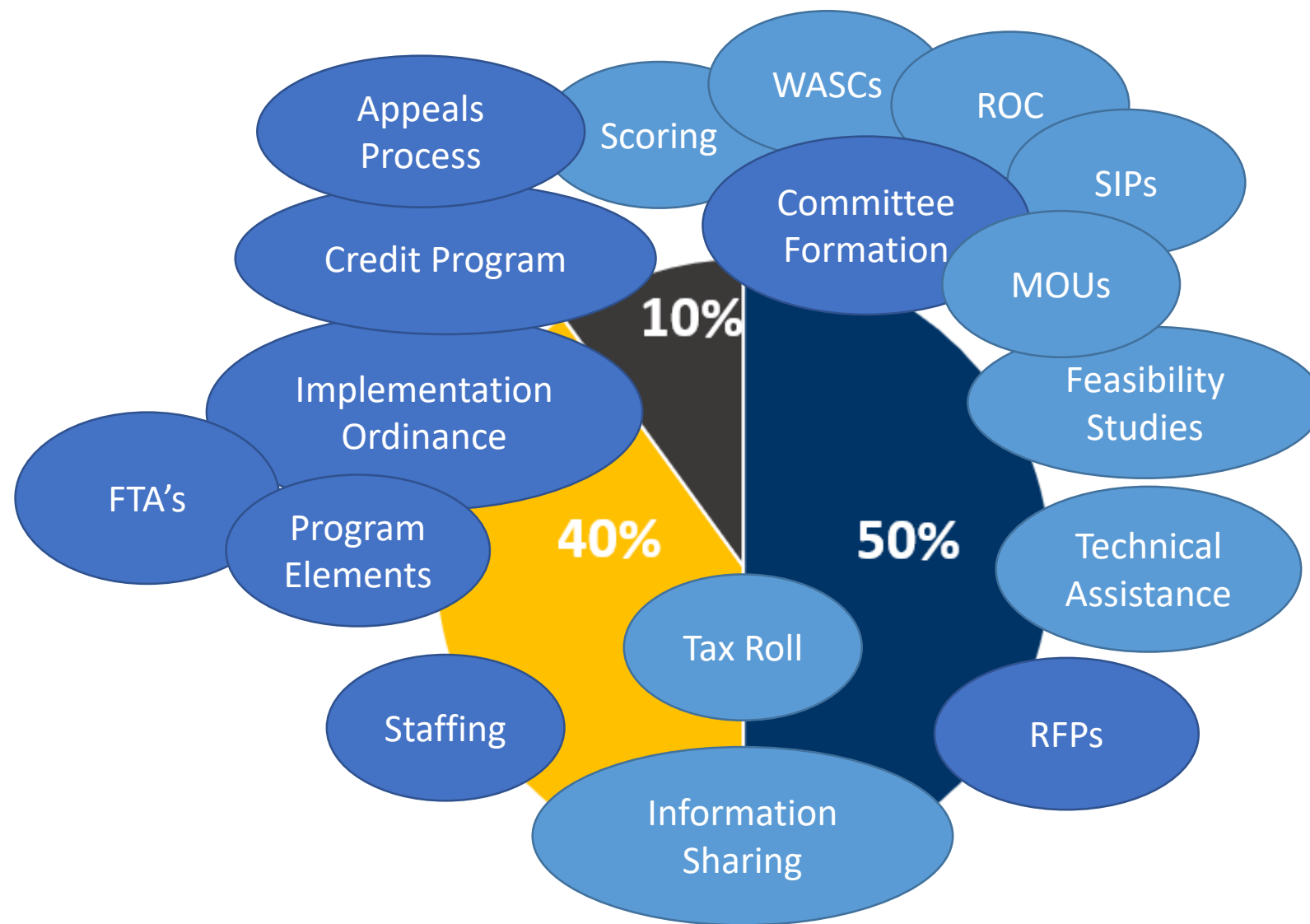
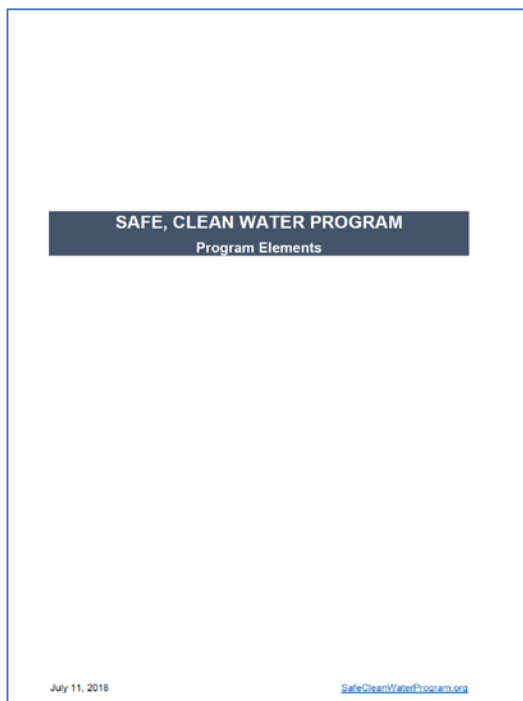
	Member	Appointed By
1	Municipality	Varies for Each Watershed Area
2	Municipality	Varies for Each Watershed Area
3	Municipality	Varies for Each Watershed Area
4	Municipality	Varies for Each Watershed Area
5	Municipality	Varies for Each Watershed Area
6	Municipality	Varies for Each Watershed Area
7	Municipality	Varies for Each Watershed Area
8	District	Appointed by Board of Supervisors
9	Largest Service Provider- Water Agency	Appointed by Board of Supervisors
10	Largest Service Provider- Groundwater/Water Agency #2	Appointed by Board of Supervisors
11	Largest Service Provider- Sanitation	Appointed by Board of Supervisors
12	Largest Municipality Agency- Municipal Parks/Open Space/Recreation	Appointed by Board of Supervisors
13	Business	Appointed by Board of Supervisors
14	Environmental Justice	Appointed by Board of Supervisors
15	Environment	Appointed by Board of Supervisors
16	At large	Appointed by Board of Supervisors
17	At large	Appointed by Board of Supervisors
	Watershed Coordinator	Non-voting

Pre-determined members were based on Impermeable Area and others were self-selected by municipalities in January and February 2019

<u>Membership Breakdown</u>	
Municipality	7
Sector-Specific	5
Community Stakeholders	5



Safe, Clean Water Program Components





Implementation Timeline – Municipal Program

Ordinance before Board of Supervisors (BOS) – by August 1, 2019

- Completes & Codifies Program Elements, including Credit/Trading Program

Revenue Collection Begins – Fall 2019

- Tax roll solidified in the summer; Auditor-Controller sends tax bills

Transfer Agreements – Fall/Winter 2019

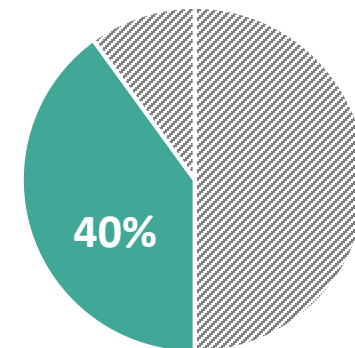
- Municipalities enter a Transfer Agreement with the District

Revenue Disbursement – Spring 2020

- First installment of revenue available for disbursement

Construction/reporting begins – Spring 2020

- Funds become available and disbursement begins for implementation





Implementation Timeline – Regional Program

Ordinance before Board of Supervisors (BOS) – by August 1, 2019

- Completes & Codifies Program Elements and Credit Program

Governance Committee – Fall 2019

- Regional Oversight Committee reviews watershed area Stormwater Improvement Plans (SIPs) and makes recommendation to County BOS

Revenue Collection Begins – Fall 2019

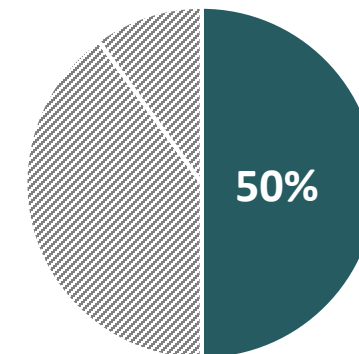
- Anticipated revenue identified and tax roll sent to Auditor-Controller

SIPs approved by BOS – Fall/Winter 2019

- District and Project Developers able to enter Fund Transfer Agreements

Construction/reporting begins – Spring 2020

- Funds become available and disbursement begins for implementation





Anticipated Overall Timeline for Implementation

April
2019

May
2019

June
2019

July
2019

Aug
2019

Sep
2019

Oct
2019

Nov
2019

Dec
2019

Jan
2020

REVENUE

*Development of Exemptions,
Appeals, and Credits Processes*

*Final FY19-20 Tax
Roll Submitted*

*FY19-20 Tax
Bills Mailed*

*Allocations in
Spring 2020 >>*

MUNICIPAL PROGRAM

*District drafts
Fund Transfer
Agreements*

*Review Period for Draft
Fund Transfer
Agreements*

*Municipalities enter
into Fund Transfer
Agreements*

REGIONAL PROGRAM

*Committee
Formations*

Request(s) for Projects

Begin scoring Projects / Feasibility Studies

WASCs prepare Stormwater Investment Plans (SIPs)

*ROC
reviews
SIPs*

*Board
approves
SIPs*

*Project Developers
enter into Transfer
Agreements*

DISTRICT PROGRAM

*Initiate RFSQs for
Educational Programs
and Watershed
Coordinators**

County Board of Supervisors adopt:

- Implementation Ordinance*
- Template Fund Transfer Agreements and Reports*
- Committee Memorandum of Understanding*

**Funded by Regional Program*



Safe, Clean Water Program

Questions?

For additional information, please contact:

Matthew Frary

mfrary@dpw.lacounty.gov

Program Email

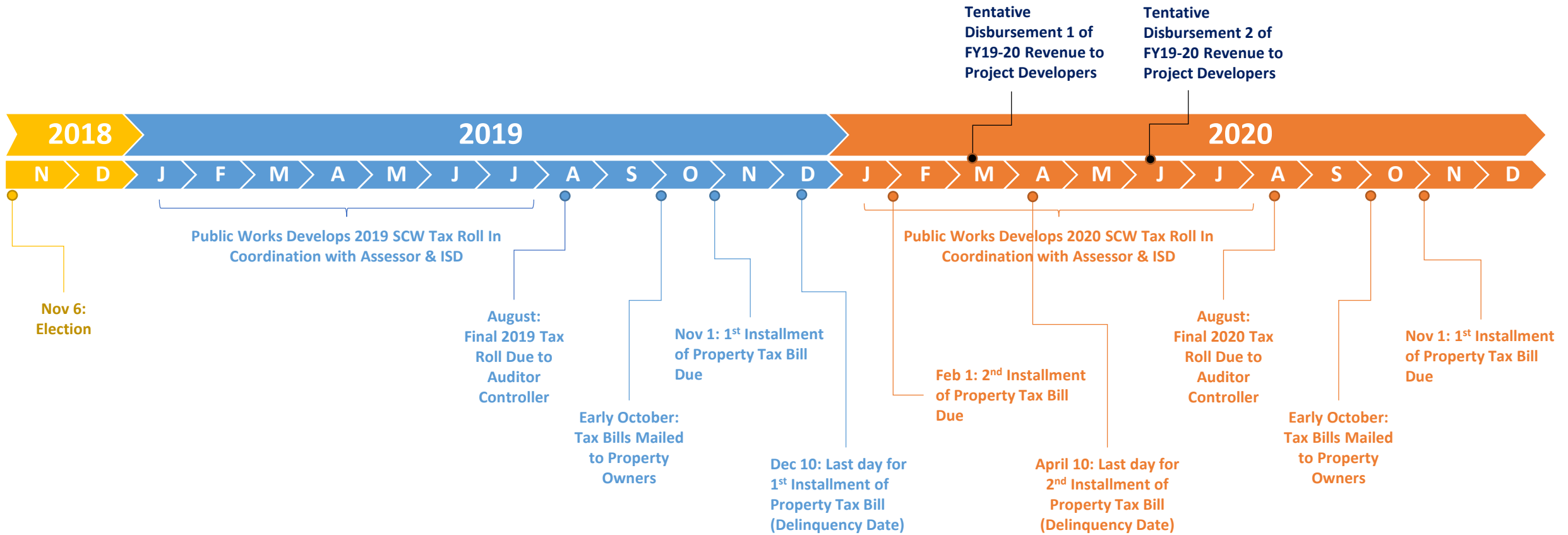
safecleanwaterla@dpw.lacounty.gov

Program website

www.safecleanwaterla.com



Tax Timeline Flowchart





Safe, Clean Water Program – DAC populations

Table 1. Disadvantaged Community Population by Watershed

Watershed Area	Population*	DAC Population*	Percent DAC
Central Santa Monica Bay	1,757,708	885,846	50%
Lower Los Angeles River	895,933	607,650	68%
Lower San Gabriel River	903,045	177,905	20%
North Santa Monica Bay	71,764	0	0%
Rio Hondo	744,634	259,860	35%
Santa Clara River	286,114	23,753	8%
South Santa Monica Bay	1,003,438	342,049	34%
Upper Los Angeles River	2,969,577	1,496,863	50%
Upper San Gabriel River	1,015,552	218,467	22%
Total	9,647,765	4,012,392	42%

***These figures are based on the 2016 US Census and will be updated periodically.**

In the Regional Infrastructure program, funds for projects provided DAC Benefits must not be less than 110% of the ratio of the DAC population to the total population in each Watershed Area.



Exemptions, Credits, and Appeals

Exemptions

- Government owned parcels
- Parcels already exempt from Ad Valorem taxes (including qualifying non-profits and other)
- Antelope Valley Watershed Area
- Low-income senior-owned parcels (*under development*)

Credits (*under development*)

- Tax reduction for qualifying stormwater improvements (SUSMP, IGP, LID, and equivalent)
- Up to 100% credit for qualifying additional activities

Appeals (*under development*)

- If parcel owners feel their tax is wrong, appeals will be available
- Web tool being developed to help expedite appeals process





Regional Program-Watershed Area Steering Committee Membership

WATERSHED AREA STEERING COMMITTEES												
	Central Santa Monica Bay	Lower Los Angeles River	Lower San Gabriel River	North Santa Monica Bay	Rio-Hondo	Santa Clara River	South Santa Monica Bay	Upper Los Angeles River	Upper San Gabriel River			
Supervisor Districts within Watershed Area (with % of Tax/Impervious Area by SD)	2nd (48%) 3rd (42%) 1st (5%) 4th (5%)	1st (47%) 4th (33%) 2nd (20%)	4th (95%) 1st (5%)	3rd (100%)	5th (60%) 1st (40%)	5th (100%)	4th (53%) 2nd (47%)	3rd (49%) 5th (29%) 1st (14%) 2nd (9%)	1st (63%) 5th (22%) 4th (15%)			
Municipal Representation (Self-selecting process to occur in January/February 2019)												
Municipal Representation (7 seats)	Los Angeles (ALL)	77%	3							Unincorporated	19%	1
	Santa Monica (3)	6%	1							Pomona (1)	13%	1
	El Segundo (4)	4%								Industry (1)	11%	1
	Culver City (2)	4%	1							West Covina (1)	9%	
	Beverly Hills (3)	4%	1							Glendora (5)	6%	1
	Inglewood (2)	2%								Diamond Bar (4)	6%	
	Unincorporated (ALL)	2%	1							Covina (5)	5%	
	West Hollywood (3)	2%								Baldwin Park (1)	5%	1
	Long Beach (4)	22%	1							Los Angeles (ALL)	19%	1
	Commerce (1)	11%	1							Carson (2)	18%	1
	Compton (2)	11%		Long Beach (4)	17%	1				Torrance (4)	16%	1
	Vernon (1)	10%	1	Santa Fe Springs (4)	11%	1				Unincorporated (ALL)	10%	1
	South Gate (1)	9%	1	Whittier (4)	9%	1				Gardena (2)	6%	
	Downey (4)	6%	1	Norwalk (4)	8%	1				Hawthorne (2)	5%	1
	Lynwood (2)	5%	1	Lakewood (4)	8%	1				Redondo Beach (4)	5%	1
Huntington Park (1)	4%		Unincorporated	7%					Unincorporated (ALL)	8%	1	
Paramount (4)	4%		Cerritos (4)	7%	1				Glendale (5)	5%	1	
Unincorporated	4%		La Mirada (4)	7%					Burbank (5)	5%		
Bell Gardens (1)	3%		Downey (4)	6%	1				San Dimas (5)	4%	1	
Bell (1)	3%		Bellflower (4)	6%					Manhattan Beach (4)	3%	1	
Pico Rivera (1)	2%		Pico Rivera (1)	5%					El Segundo (4)	2%	1	
Cudahy (1)	2%		Paramount (4)	2%					Palms (4)	2%	1	
Maywood (1)	2%		Artesia (4)	2%					Lomita (4)	2%		
Signal Hill (4)	1%	1	La Habra Heights (4)	1%					Lawndale (2)	1%		
Carson (2)	0%		Signal Hill (4)	1%					San Fernando (3)	1%		
Lakewood (4)	0%		Hawaiian Gardens (4)	1%					South Pasadena (5)	1%		
									Rolling Hills Estates	1%		
									Hermosa Beach (4)	1%		
									Monterey Park (1)	0%		
									Hidden Hills (3)	0%		
									Los Angeles (ALL)	0%		
									South Pasadena (5)	0%		
									Unincorporated (ALL)	36%	3	
									Compton (2)	0%		
									Santa Clarita (5)	64%	4	
									Unincorporated (ALL)	36%	3	
LACFCD	FCD	FCD	FCD	FCD	FCD	FCD	FCD	FCD	FCD			
Water Agency	LA-DWP	Central Basin	Central Basin	Las Virgenes	Upper San Gabriel District	Santa Clarita Valley Water Agency	West Basin	LA-DWP	Upper San Gabriel District			
Ground Water / Water Agency 2	West Basin	Water Replenishment District	Water Replenishment District	County-Waterworks District	Main San Gabriel Basin	GSA for the Santa Clara River Valley	Water Replenishment District	LA-DWP	Main San Gabriel Basin			
Sanitation	LA-SAN	San Districts	San Districts	Las Virgenes	San Districts	San Districts	San Districts	LA-SAN	San Districts			
Municipal Parks / Open Space	LA Rec & Parks	City of Long Beach Parks and Recreation	City of Long Beach Parks and Recreation	Mountains Recreation and Conservation Authority	City of Pasadena Parks and Recreation	City of Santa Clarita Parks and Recreation	LA Rec & Parks	LA Rec & Parks	County Parks and Rec			
Business	Appointed by BoS	Appointed by BoS	Appointed by BoS	Appointed by BoS	Appointed by BoS	Appointed by BoS	Appointed by BoS	Appointed by BoS	Appointed by BoS			
Environmental Justice	Appointed by BoS	Appointed by BoS	Appointed by BoS	Appointed by BoS	Appointed by BoS	Appointed by BoS	Appointed by BoS	Appointed by BoS	Appointed by BoS			
Environment	Appointed by BoS	Appointed by BoS	Appointed by BoS	Appointed by BoS	Appointed by BoS	Appointed by BoS	Appointed by BoS	Appointed by BoS	Appointed by BoS			
At Large	Appointed by BoS	Appointed by BoS	Appointed by BoS	Appointed by BoS	Appointed by BoS	Appointed by BoS	Appointed by BoS	Appointed by BoS	Appointed by BoS			
At Large	Appointed by BoS	Appointed by BoS	Appointed by BoS	Appointed by BoS	Appointed by BoS	Appointed by BoS	Appointed by BoS	Appointed by BoS	Appointed by BoS			

Seven Municipal membership seats determined by impermeable area in the Watershed area (100% Watershed land area ÷ 7 seats = ~14%)



Taxing Impermeable Area

LA County Landcover Survey



Identifies



VEGETATION



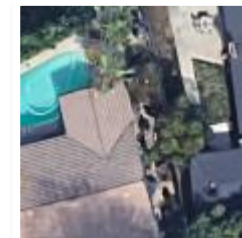
SOIL



STRUCTURES



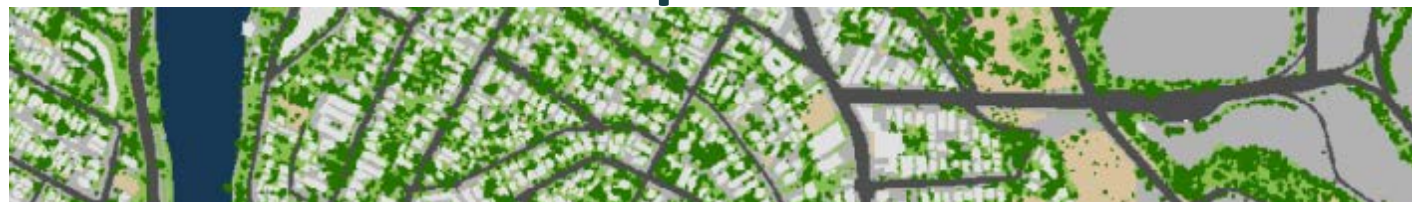
PAVEMENT



OTHER



Calculate Impermeable Area





Sample Projects

ELMER AVE GREEN STREET

BASSETT HIGH SCHOOL

DOMINGUEZ GAP WETLANDS

Los Angeles

20



Los Angeles County



**LA County:
11.5 million by 2025***

* California Department of Finance