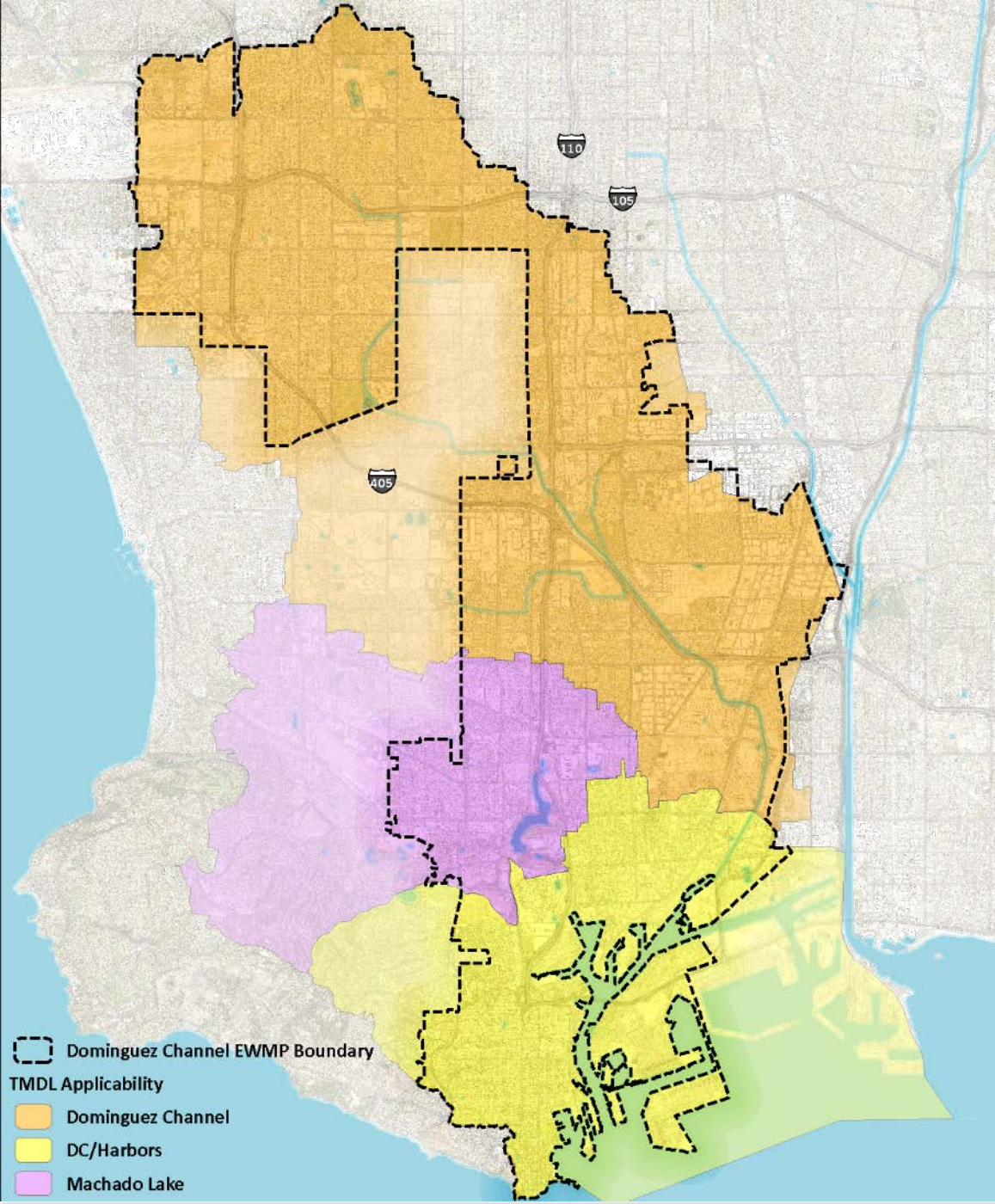




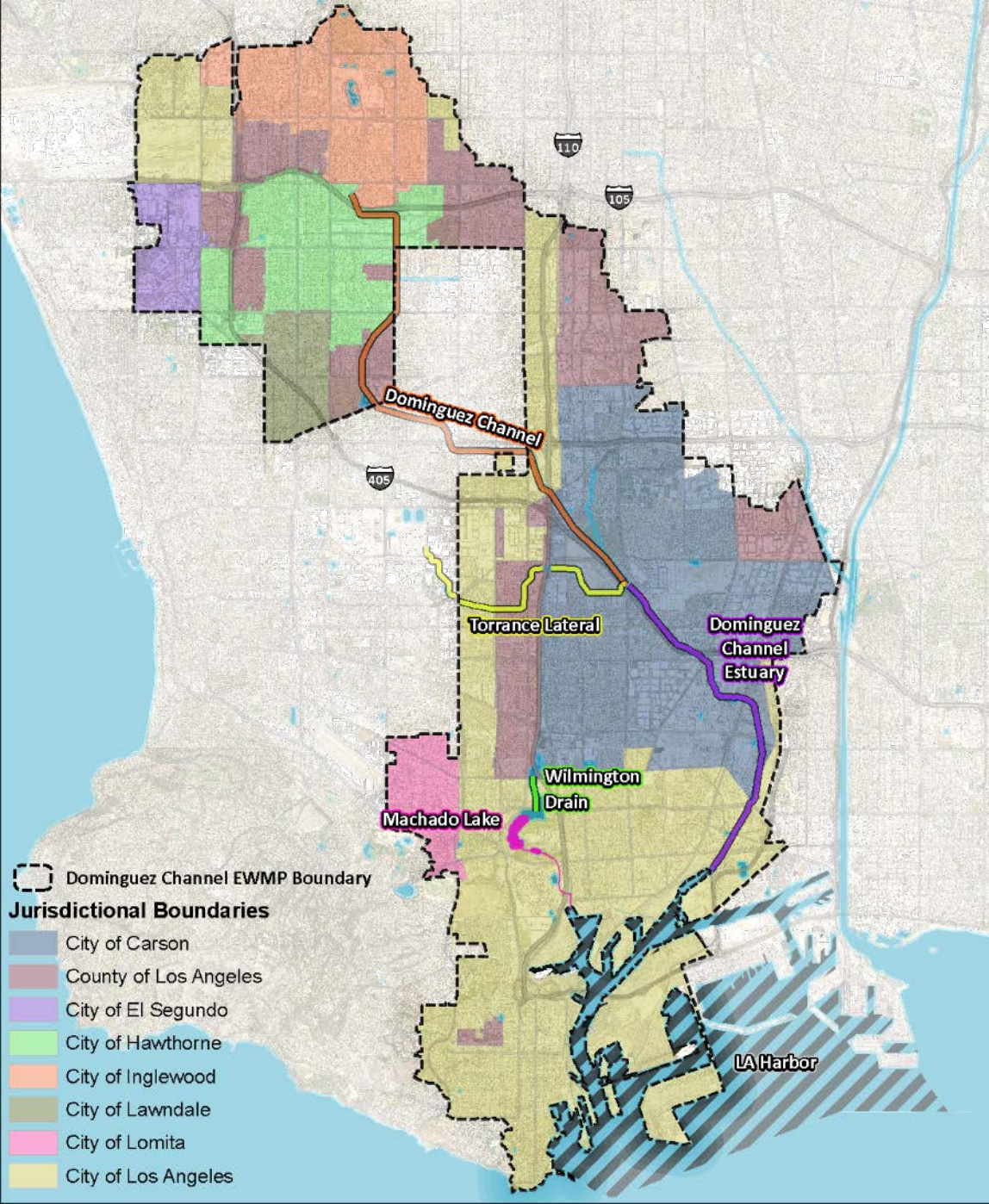
DOMINGUEZ CHANNEL WATERSHED MANAGEMENT GROUP
ENHANCED WATERSHED MANAGEMENT PROGRAM
July 12, 2018

DOMINGUEZ CHANNEL WMG SUB- WATERSHEDS

- Dominguez Channel
- Machado Lake
- Los Angeles Harbor



DOMINGUEZ CHANNEL WMG JURISDICTIONS



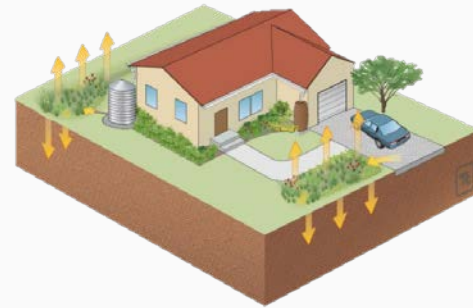
- Carson
- El Segundo
- Hawthorne
- Inglewood
- Lawndale
- Lomita
- Los Angeles
- County of Los Angeles
- LA County Flood Control District

WATERSHED CONTROL MEASURES

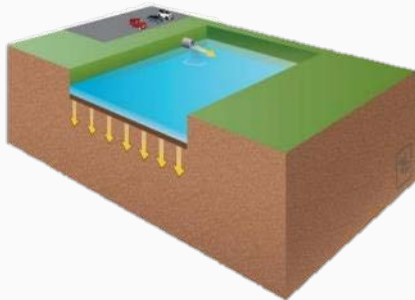
1. Non-Structural Measures



2. Low Impact Development



3. Regional Projects



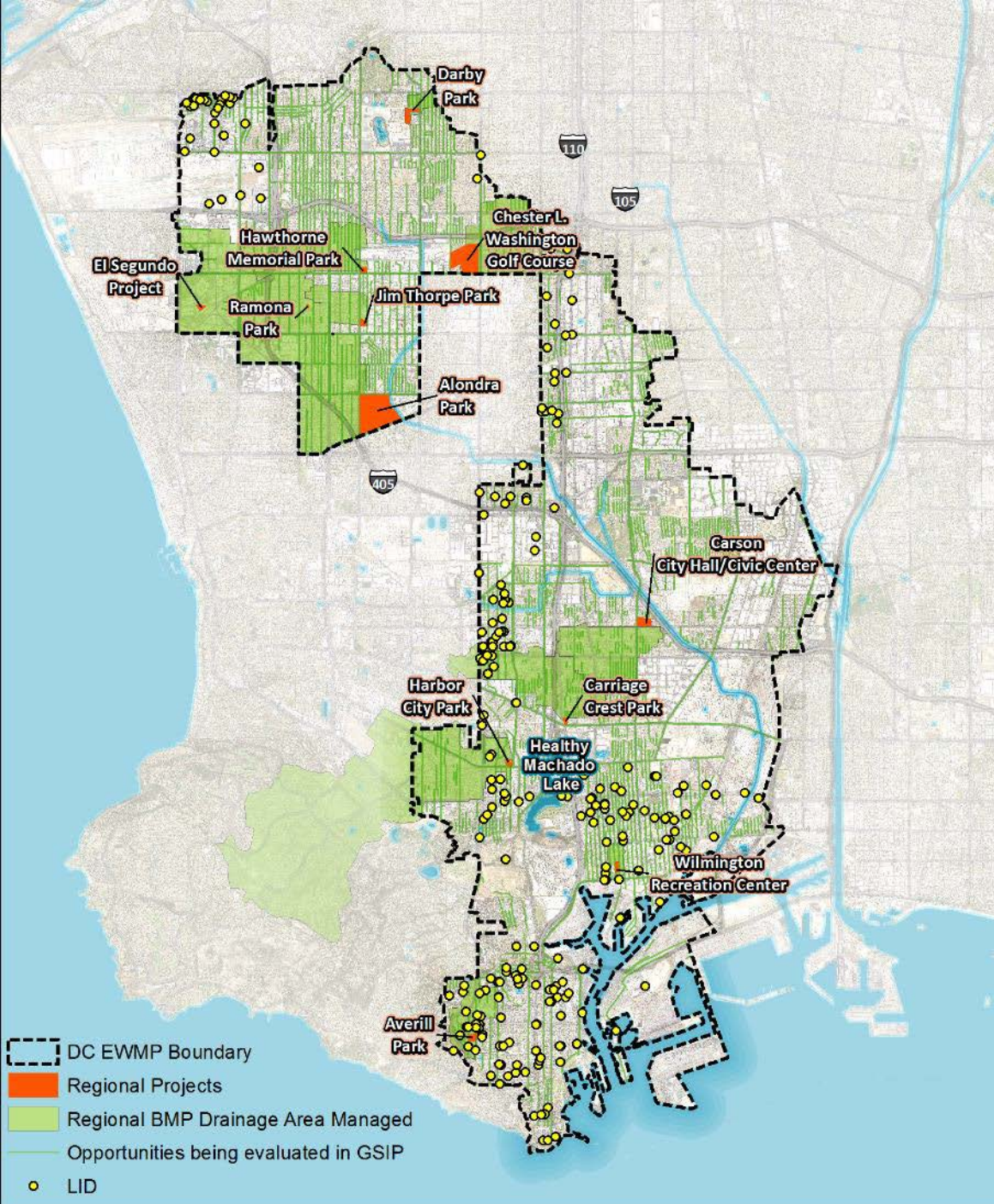
4. Green Streets



STRUCTURAL MEASURES



LOW IMPACT DEVELOPMENT



LOW IMPACT DEVELOPMENT

Rudolph Park



- Open Space
- Biofiltration
- Completed: May 2016



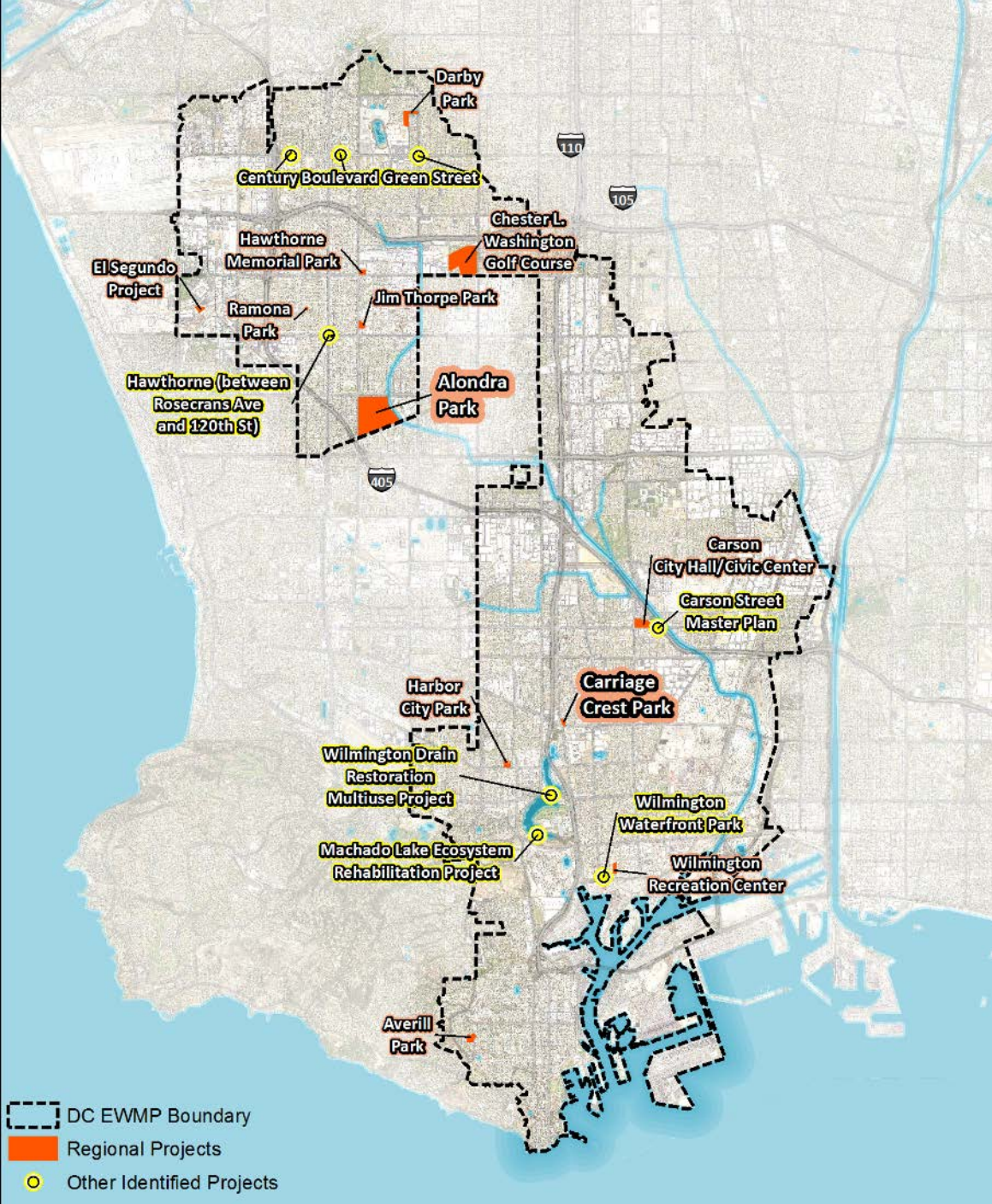
LOW IMPACT DEVELOPMENT

TraPac

- Biofiltration
- Completed: 2015



REGIONAL PROJECTS



REGIONAL PROJECTS

Machado Lake Phase 1 (Wilmington Drain)



Before



After

- Open space, habitat , and recreational benefits
- Cost: \$25,100,000
- Prop O, Prop 50, LA County
- Completed: June 2015



REGIONAL PROJECTS

Machado Lake Ecosystem Rehabilitation



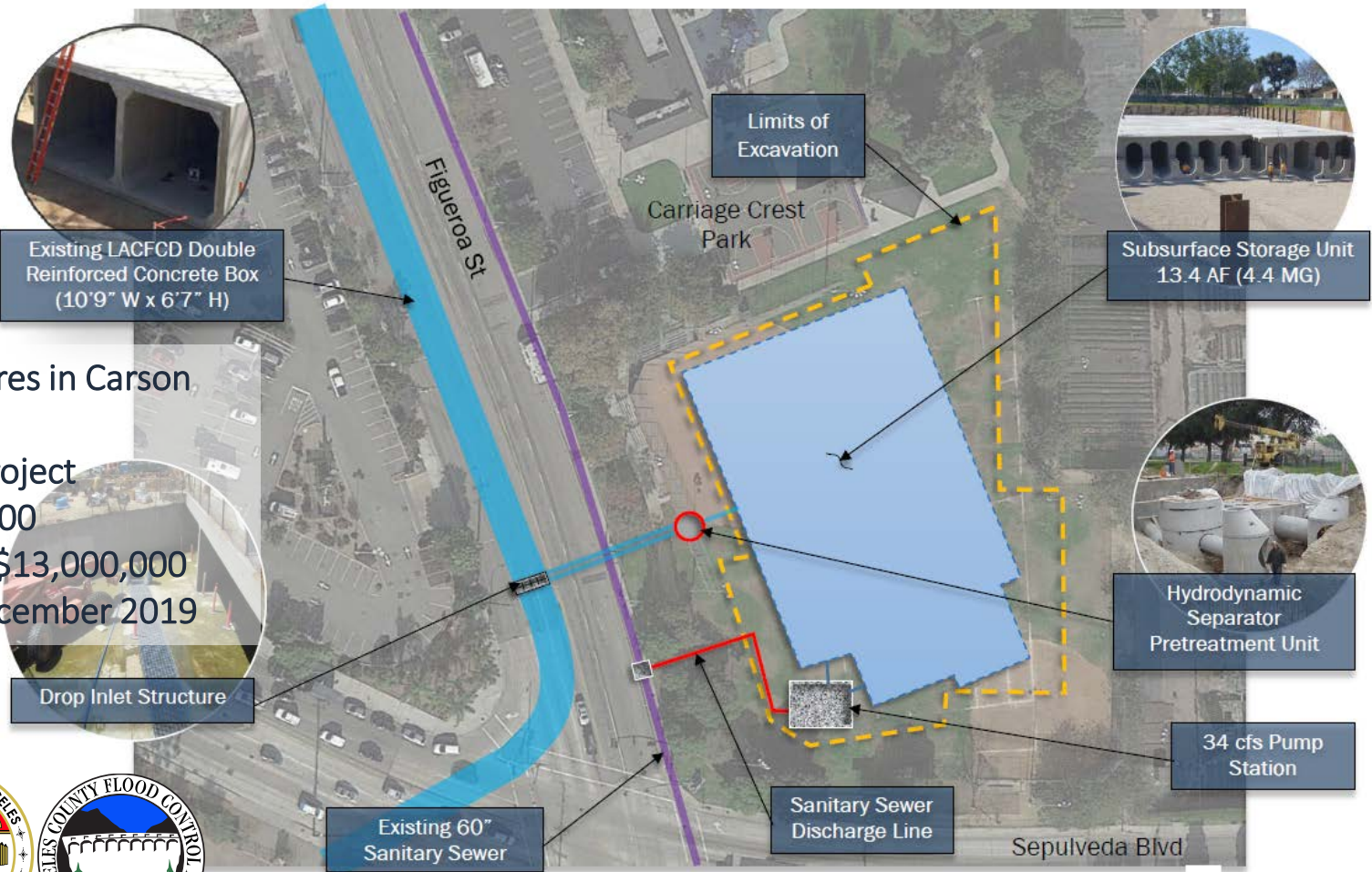
- Captures 6,820 AF per year
- Multiple Benefits
- Cost: \$111,900,000
- Prop O, Prop K, Prop CC funding
- Completed: November 2017



REGIONAL PROJECTS

Stormwater and Runoff Capture Project at Carriage Crest Park

- Serves 1,146 acres in Carson and LA County
- Multi-Benefit Project
- Cost: \$18,200,000
- Grant Funding: \$13,000,000
- Completion: December 2019



REGIONAL PROJECTS

Alondra Park MultiBenefit Stormwater Capture Project

- Drainage from multiple cities
- Multi-benefit project
- Planning in progress



GREEN STREETS

Hawthorne Blvd. Mobility Improvement Project

- Comprehensive street improvement
- 45 acre drainage area
- Cost: \$1.5 M (stormwater)
- Completed: 2015



GREEN STREETS

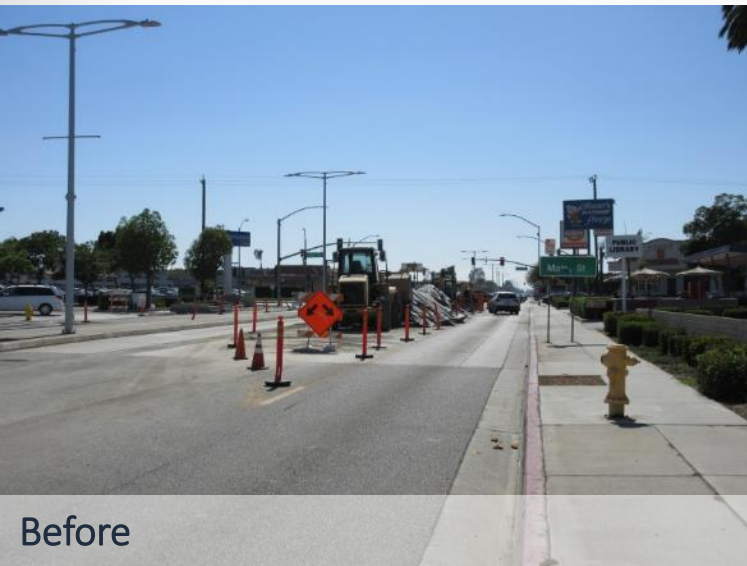
Century Boulevard Green Street

- Three dry wells
- 7.56 acre drainage area
- Under Construction



GREEN STREETS

Carson Street Master Plan



Before

After

- Comprehensive street improvements



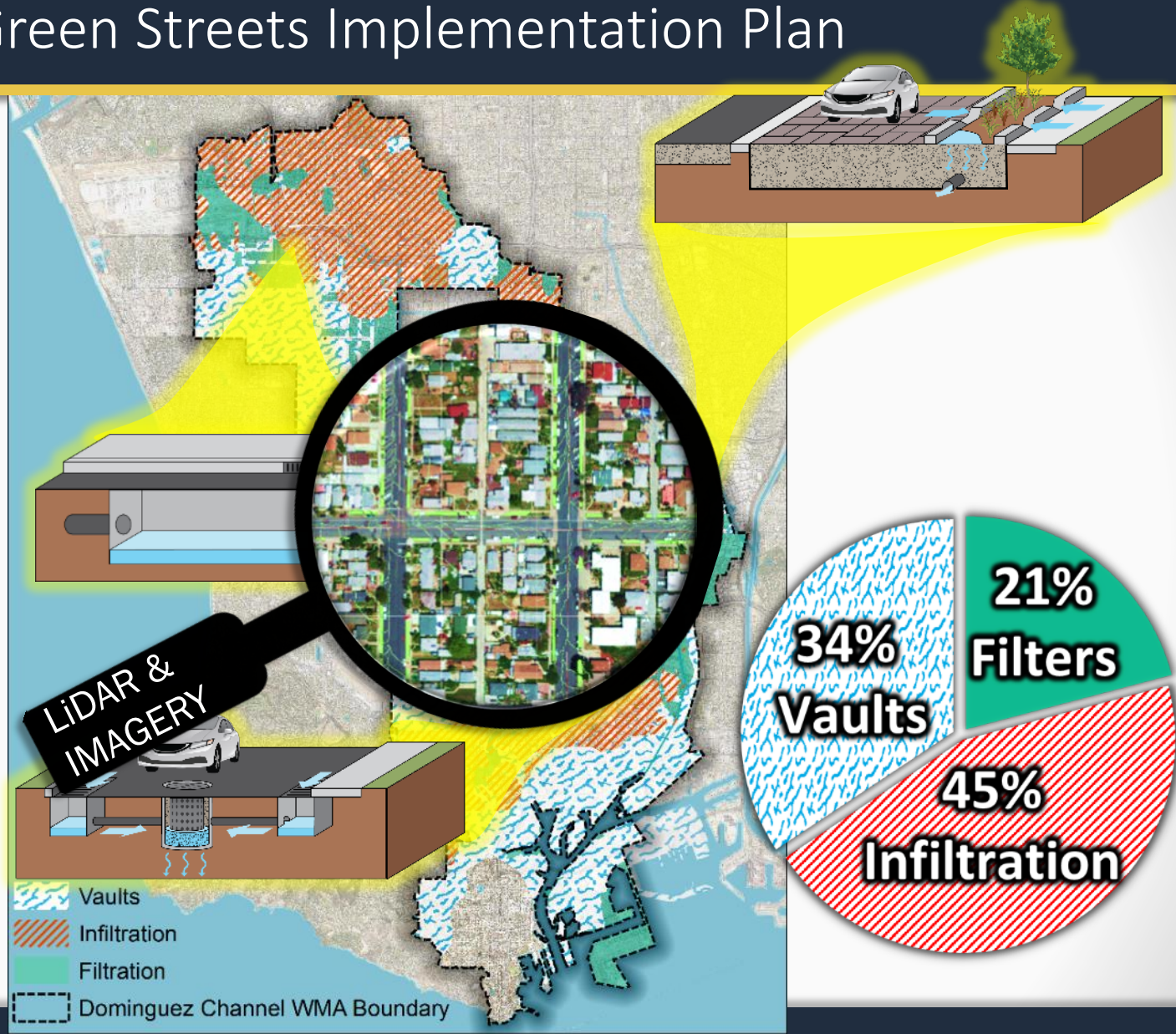
GREEN STREETS

Green Streets Implementation Plan



GREEN STREETS

Green Streets Implementation Plan

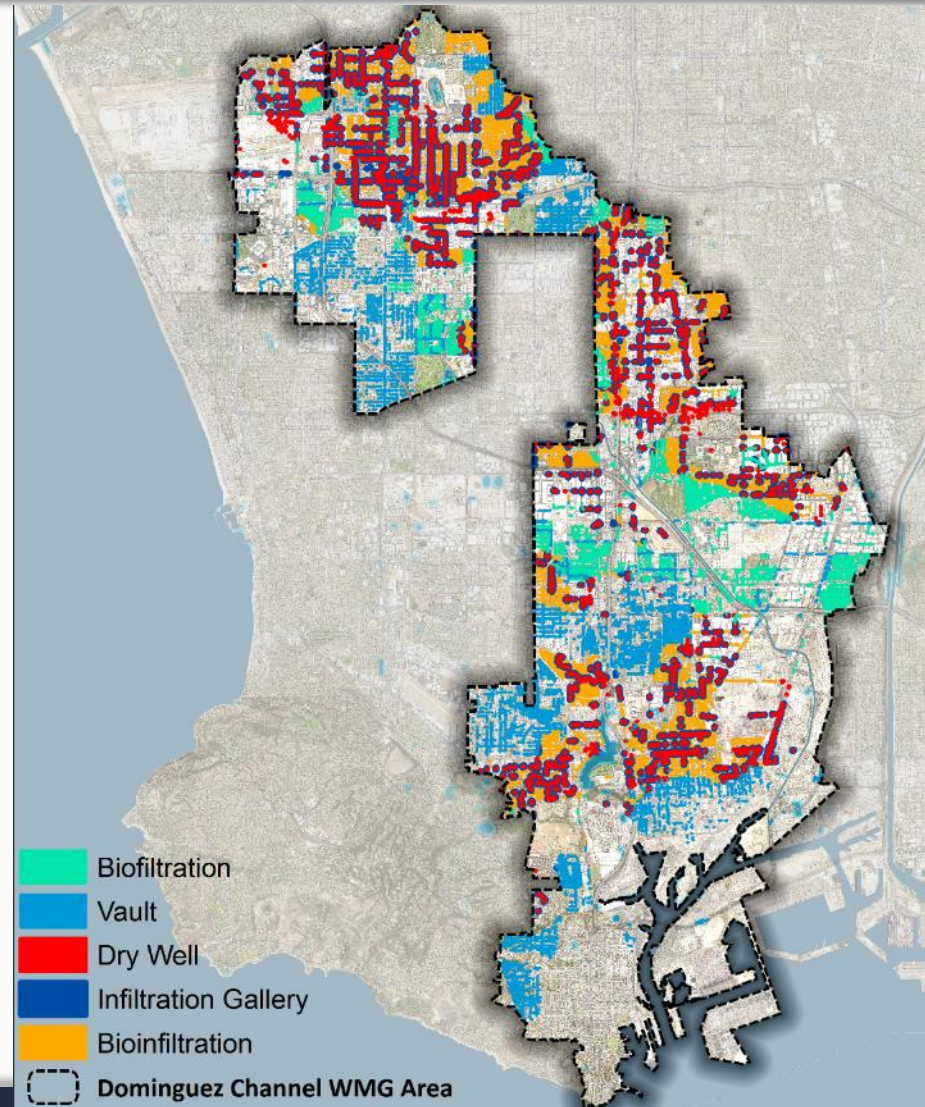


GREEN STREETS

Green Streets Implementation Plan

<u>BMP Type</u>	<u>#</u>
Biofiltration	7,000
Vault	16,000
Dry Well	23,700
Bioinfiltration	19,400
Green Alley	50
Infiltration Gallery	3,900

Total:
70,050 Potential Opportunities



INNOVATIVE PARTNERSHIPS



DOMINGUEZ CHANNEL

ENHANCED WATERSHED MANAGEMENT PROGRAM

Thank you

