

Los Angeles County Municipal Storm Water
Permit: Limited Reopener to Incorporate Waste
Load Allocations for the Los Angeles River
Watershed Trash Total Maximum Daily Load

Public Workshop

Los Angeles Regional Board

July 29, 2009

Proposal - Limited Re-opener

- Revise the County of Los Angeles Municipal Separate Storm Sewer System (MS4) Permit (NPDES No. CAS004001) to include waste load allocations for trash in the Los Angeles River Watershed

LA County MS4 Permit Background

- LA County MS4 Permit – 2001
 - Compliance with water quality standards
 - Mitigation criteria for new development and redevelopment
 - Regional monitoring, tributary monitoring and bioassessment
 - Controls to reduce trash
- LA County MS4 Permit Re-opener – 2006
 - Receiving Water Limitations = REC-1 Bacteria Objectives
 - Prohibition on summer dry weather discharges that cause or contribute to exceedances of bacteria objectives at Santa Monica Bay beaches

Background - 2

- LA County MS4 Permit Re-opener – 2007
 - Receiving Water Limitations = REC-1 Bacteria Objectives
 - Prohibition on summer dry weather discharges that cause or contribute to exceedances of bacteria objectives at Mothers' Beach and Basins D, E, and F in Marina del Rey Harbor
- LA County MS4 Permit Re-opener – 2009 (proposed)
 - Incorporate Waste Load Allocations established in TMDL for trash discharges in the Los Angeles River Watershed

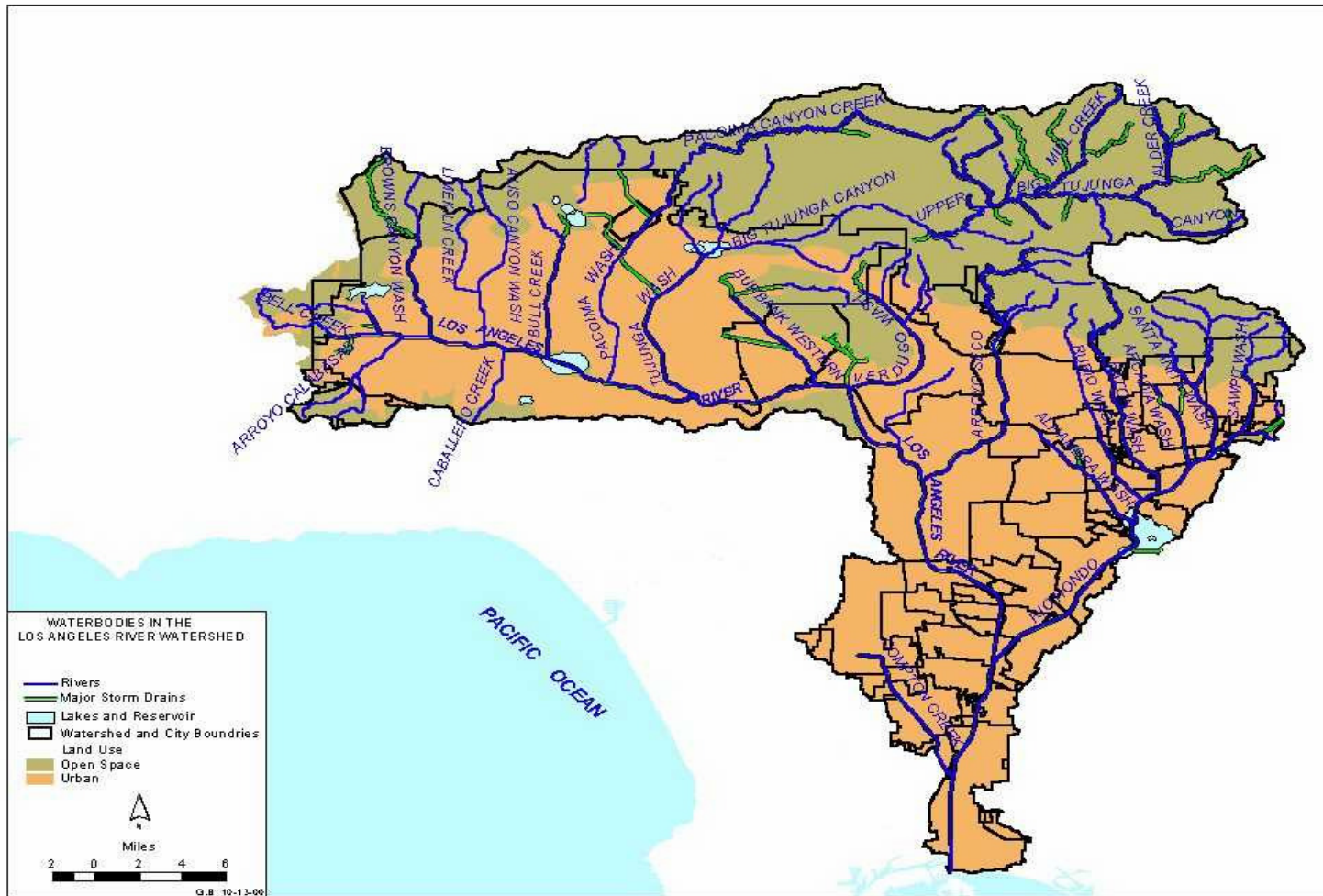
Limited Re-opener

- Covers urban runoff and stormwater discharges within the Los Angeles River Watershed
- Incorporates Waste Load Allocations for trash as provided in the Los Angeles River Trash TMDL
- Provides Compliance Monitoring Requirements

LA River Watershed Trash TMDL

- Regional Board adopted TMDL on August 9, 2007
- State Board approved on April 15, 2008
- Office of Administrative Law approved on July 1, 2008
- U.S. EPA approved on July 24, 2008
- TMDL Effective Date - September 23, 2008

Los Angeles River Watershed



LA River Watershed Trash TMDL - Scope

- Impaired Reaches
 - Los Angeles River (Reaches 1, 2, 3, 4 & 5)
 - Los Angeles River Estuary
 - Los Angeles River Tributaries
 - Peck Road Lake, Echo Park Lake & Lincoln Park Lake
- 609 square miles
- 44 Responsible Jurisdictions
 - County of Los Angeles
 - 42 Cities
 - California Department of Transportation (Caltrans)

Sources of Trash

- Storm drain discharges - primary source of trash in Los Angeles River



Water Quality Objectives

Floating Material

- “Waters shall not contain floating materials including solids, liquids, foams, and scum in concentrations that cause nuisance or adversely affect beneficial use.”

Solid, Suspended, or Settleable Materials

- “Waters shall not contain suspended or settleable material in concentrations that cause nuisance or adversely affect beneficial uses.”

Waste Load Allocation (WLA)

- **Baseline WLA =**
Summation of: Land use area x trash generated (by land use)
- **Interim WLAs =**
% reductions of the Baseline WLA
- **Final WLA = Numeric Target = 0**

Applicable WLAs & Compliance Dates

Date	WLA	Compliance Point
Sep 30, 2010	40% of Baseline WLA	50% of the baseline (re-opener)
Sep 30, 2011	30% of Baseline WLA	40% of Baseline
Sep 30, 2012	20% of Baseline WLA	30% of Baseline
Sep 30, 2013	10% of Baseline WLA	20% of Baseline
Sep 30, 2014	0% of Baseline WLA	10% of Baseline
Sep 30, 2015	0% of Baseline WLA	3.3% of Baseline
Sep 30, 2016	0% of Baseline WLA	0% of Baseline

WLA Compliance Strategies

- Full capture systems
 - Installation results in full compliance for drainage area (subject to proper operation and maintenance).
- Partial capture systems
 - Compliance determined by annual calculation of trash discharges
- Institutional controls
 - Also requires annual determination of trash discharges

Trash TMDL Implementation Mechanism

- Per the Los Angeles River Watershed Trash TMDL:

“This TMDL will be implemented through stormwater permits and via the authority vested in the Executive Officer by section 13267 of the Porter-Cologne Water Quality Control Act: (Water Code section 13000 et seq.).”

Legal and Regulatory Basis

- 40 CFR 122.44(d)(1)(vii)

The Permitting Authority shall ensure that:

- (A) The level of water quality to be achieved by limits on point sources established under this paragraph is derived from, and complies with all applicable water quality standards; and
- (B) Effluent limits developed to protect a narrative water quality criterion, a numeric water quality criterion, or both, are consistent with the assumptions and requirements of any available waste load allocation for the discharge prepared by the State and approved by EPA pursuant to 40 CFR 130.7.

Proposed Amendments

- New section created and added to current LA MS4 Permit
 - Part 7. TMDL Provisions
 - LA River Trash TMDL WLAs and Compliance Points
 - Full Capture Certification Process
 - Compliance Monitoring (Daily Generation Rate [DGR]) Calculation
 - New Definitions

Next Steps

- Comments on Workshop (August 12, 2009)
 - Submit comment - *to attention of Ivar Ridgeway* - via e-mail or regular mail
- Public Notice Draft Permit (Aug/Sept 2009)
- Comment Period - 45 days
- Board Hearing (Fall 2009)

For More Information

- Subscribe to “Storm Water – Los Angeles Co MS4” LYRIS list at:

http://www.waterboards.ca.gov/resources/email_subscriptions/reg4_subscribe.shtml

- Ivar Ridgeway
Stormwater Permitting
(213) 620-2150
Iridgeway@waterboards.ca.gov
- Ginachi Amah
Basin Planning
(213) 576-6685
gamah@waterboards.ca.gov