
Central Valley Regional Water Quality Control Board

11 April 2025

Ryan Brown
Pacific Gas and Electric Company
350 Salem Street
Chico, CA 95928

**NOTICE OF APPLICABILITY: STATE WATER RESOURCES CONTROL BOARD
CLEAN WATER ACT SECTION 401 GENERAL WATER QUALITY CERTIFICATION
FOR REGIONAL GENERAL PERMIT 8 (ORDER WQ 2023-0061-DWQ), PACIFIC
GAS AND ELECTRIC COMPANY, PG&E EMERGENCY TOWER STABILIZATION
PROJECT, SHASTA COUNTY, WDID NO. 5A45CR00671**

This letter serves to notify Pacific Gas and Electric the PG&E Emergency Tower Stabilization Project (Project) is certified under State Water Resources Control Board's Clean Water Act Section 401 General Water Quality Certification for Regional General Permit 8 for Emergency Repair and Protection Activities (General Order; Order WQ 2023-0061-DWQ). The project site is located at approximate latitude 40.8138 and longitude -121.9293 in Shasta County, California.

This Notice of Applicability (NOA) is being issued to Pacific Gas and Electric Company (hereinafter Enrollee) by the Central Valley Regional Water Quality Control Board (Central Valley Water Board) under the General Order pursuant to Section 3838 of the California Code of Regulations. A copy of the General Order is enclosed and may also be accessed on [State Water Resources Control Board's General Orders Web Page](https://www.waterboards.ca.gov/water_issues/programs/cwa401/generalorders.html#yr_2023) (https://www.waterboards.ca.gov/water_issues/programs/cwa401/generalorders.html#yr_2023).

The Project must proceed in accordance with the requirements contained in this NOA and the General Order. The Project is described in the Notice of Intent requesting coverage and supplemental information (Application Package) submitted by the Enrollee and is limited to the impacts identified in the Application Package and described in this NOA. If the Project is modified from that described in the Application Package, then coverage under the General Order is no longer valid.

I. EMERGENCY WORK DESCRIPTION

The south bank of Minnow Creek at approximate latitude 40.8138 and longitude -121.9293 in Shasta County experienced severe erosion during the winter of 2024-2025. The creek bank eroded horizontally last winter and encroached on structure 094/478 on the Enrollee's Malin-Round Mountain #2 500 kV transmission tower. The structure is at risk of collapsing due to this instability and could likely take out other structures.

The project involves placing approximately 120 cubic yards of rock slope protection (RSP) along 133 linear feet of creek bank that will impact 0.03 acre below the ordinary high water mark (OHWM). Additional RSP will be placed from the stream upslope to the tower, with the total acreage (below the OHWM and upland) estimated to be 0.14 acre and the total volume estimated at 1,200 cubic yards of rock. Matting has been placed on the off-road access to the tower to reduce soil disturbance. Crews will use a small excavator to move rock into the slide area, along with small dump trucks to transport material, and trucks to transport crews and hand tools. Materials have been staged in a laydown area adjacent to Dunn Moody Road. The total project size is 0.77 acre and is expected to last 3 to 5 days.

II. DESCRIPTION OF DIRECT IMPACTS TO WATERS OF THE STATE

Total Project fill/excavation quantities for all impacts are summarized in Tables 1. Permanent impacts are categorized as those resulting in a physical loss in area and also those degrading ecological condition.

Table 1: Total Project Fill/Excavation Quantity for Permanent Physical Loss of Area Impacts

Aquatic Resources Type	Acres	Cubic Yards	Linear Feet
Stream Channel	0.03	120	133

III. COMPENSATORY MITIGATION

Compensatory mitigation is required for permanent physical loss and permanent ecological degradation of a water of the state. The Enrollee is required to provide compensatory mitigation for the authorized impact to 0.03 acre of stream channel by purchasing 0.03 acre stream channel credit from a U.S. Army Corps of Engineers approved mitigation bank or 0.03 aquatic resource credit from the National Fish and Wildlife Foundation's Sacramento District California In-Lieu Fee Program in the Pit River Basin Aquatic Resource Service Area.

Mitigation credits shall be purchased within 90 days of initiating the emergency project and prior to the Central Valley Water Board's approval of a Notice of Completion.

IV. REPORTING

The Enrollee must notify the Central Valley Water Board no less than forty-eight (48) hours prior to initiating the emergency project.

A Notice of Completion (NOC) shall be submitted by the Enrollee within 45 calendar days of completion of Project activities. The NOC shall demonstrate that the work has been carried out in accordance with the description provided in the Enrollee's Notice of Intent.

Failure to comply with the terms and conditions of this NOA may expose the Enrollee to enforcement action pursuant to the Clean Water Act and California Water Code.

V. CENTRAL VALLEY REGIONAL WATER QUALITY CONTROL BOARD CONTACT:

If you have any questions regarding this Notice of Applicability, please contact Daniel Warner at (530) 224-4848 or Daniel.Warner@Waterboards.ca.gov.

Original Signed by Clint E. Snyder, AEO
For Patrick Pulupa, Executive Officer
Central Valley Regional Water Quality Control Board

4/11/2025
Date

DLW: db

Enclosure: State Water Resources Control Board's Clean Water Act Section 401 General Water Quality Certification for Regional General Permit 8 for Emergency Repair and Protection Activities (Order WQ 2023-0061-DWQ)

cc via email: U.S. EPA, Region 9, San Francisco
Water Quality Certification Program, SWRCB, Sacramento
Maya Bickner, U.S. Army Corps of Engineers, Sacramento District
Kyle Schneider, Pacific Gas and Electric Company, Sacramento

(This page intentionally left blank)

Attachment A – Project Maps

Figure 1. Project Location Map

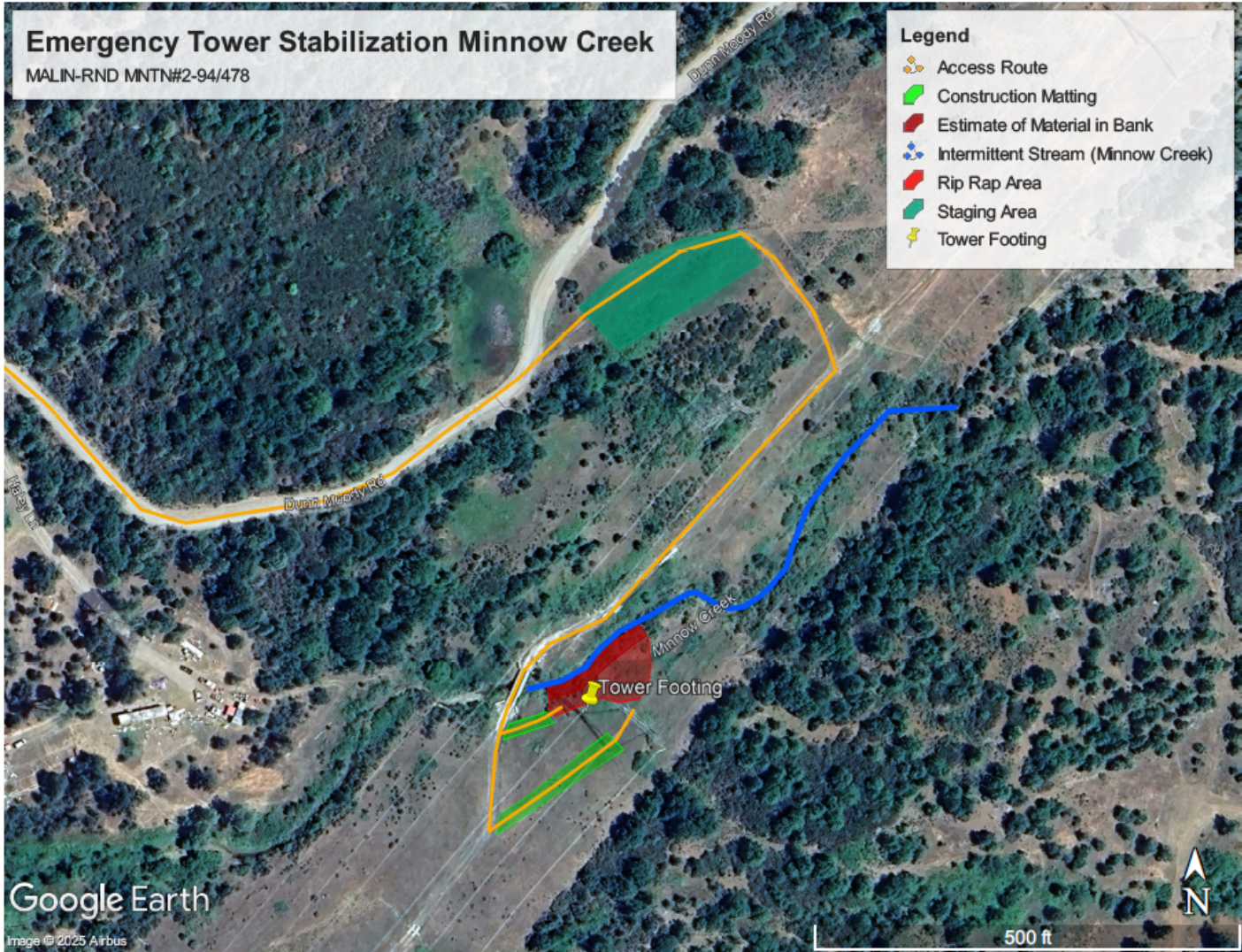


Figure 2. Project Impact Map

