
Central Valley Regional Water Quality Control Board

24 May 2017

Adam O'Connor
Pacific Gas & Electric Company
6111 Bollinger Canyon Road, 3130G
San Ramon, CA 94583

CERTIFIED MAIL
91 7199 9991 7035 8420 2432

REVISED NOTICE OF APPLICABILITY

WAIVER OF REPORT OF WASTE DISCHARGE AND WASTE DISCHARGE REQUIREMENTS FOR SPECIFIC TYPES OF DISCHARGE WITHIN THE CENTRAL VALLEY REGION, PACIFIC GAS & ELECTRIC COMPANY, R-356 PIPELINE RETIREMENT PROJECT, SACRAMENTO COUNTY

On 11 May 2017, Pacific Gas & Electric Company (PG&E) submitted a Notice of Intent (NOI) to obtain coverage under the *Waiver of Report of Waste Discharge and Waste Discharge Requirements for Specific Types of Discharge within the Central Valley Region, Order R5-2013-0145* (the Waiver). Additional information was submitted on 23 May 2017 to include additional land application areas (LAAs). The submittal contains all the information required to evaluate the applicability of the Waiver; therefore, the NOI is considered complete and the discharge meets the conditions of the Waiver. The discharge is hereby covered under the Waiver Order R5-2013-0145-0071. Please include this number on all correspondence related to this discharge.

PROJECT LOCATION AND DESCRIPTION

PG&E is planning on decommissioning approximately 1.5 miles of natural gas pipeline located near Isleton in Sacramento County. The construction work areas and access roads are located on parcel APN 142-0110-088. The project is expected to begin in late June 2017 and should take approximately six to eight weeks to complete.

The project will involve excavating around portions of the pipeline to be abandoned. The pipeline will be deactivated, cut, filled with inert gas, capped, and left in place. Groundwater is expected to be encountered in the excavations and dewatering will generate approximately 20,000 gallons per day. Extracted water will be stored in frac tanks, settled, and then discharged for use as dust control on the areas identified on Attachments A and B. The land application area will be used with the property owner's permission. Prior to discharge, visual and olfactory observations of the discharge will be made. If any unexpected conditions, such as sheen, discoloration, or odors are observed, water will be segregated, sampled, and handled appropriately based on the results of the samples. Once cleared for discharge, the water will be applied to land using a water buffalo, water truck, or other appropriate alternative, depending on the volume of water to be discharged. Discharges will be contained within the

land application areas shown on Attachments A and B. Some of the water discharged may be used for dust suppression on the unpaved access roads within the project area. Water discharged must infiltrate within 24 to 48 hours and will not be allowed near any sensitive site features (water ways, drain inlets, drainage or irrigation canals, etc). Stormwater BMPs will be utilized as needed to prohibit migration of water off of land application areas, if needed.

A review of Geotracker indicates that the nearest site with historical contamination is approximately one mile from the project area and is not expected to impact the project.

The Water Quality Control Plan for the Sacramento River and San Joaquin River Basins, Fourth Edition, revised October 2011 (hereafter Basin Plan), designates beneficial uses, establishes water quality objectives, contains implementation plans and policies for protecting waters of the basin, and incorporates by reference plans and policies adopted by the State Water Resources Control Board. Pursuant to §13263(a) of the California Water Code (CWC), waste discharge requirements must implement the Basin Plan.

FACILITY-SPECIFIC REQUIREMENTS

Please review the attached waiver documents and ensure that the discharge complies with the Conditions of Discharge contained in Attachment A of the Waiver. PG&E is responsible for compliance with the waiver and must provide sufficient contractor oversight to ensure compliance and prompt reporting of any noncompliance.

DOCUMENT SUBMITTALS

All monitoring reports and other correspondence should be converted to searchable Portable Document Format (PDF) and submitted electronically. Documents that are less than 50 MB should be emailed to:

centralvalleysacramento@waterboards.ca.gov.

To ensure that your submittal is routed to the appropriate staff person, the following information must be included in the body of the email or any documentation submitted to the mailing address for this office:

Facility Name: PG&E R-356 Pipeline Retirement Project, Sacramento County		
Program: Non-15 Compliance	Order: R5-2013-0145-XXXX	CIWQS Place ID: 835183

Documents that are 50 MB or larger must be transferred to a CD, DVD, or flash drive and mailed to:

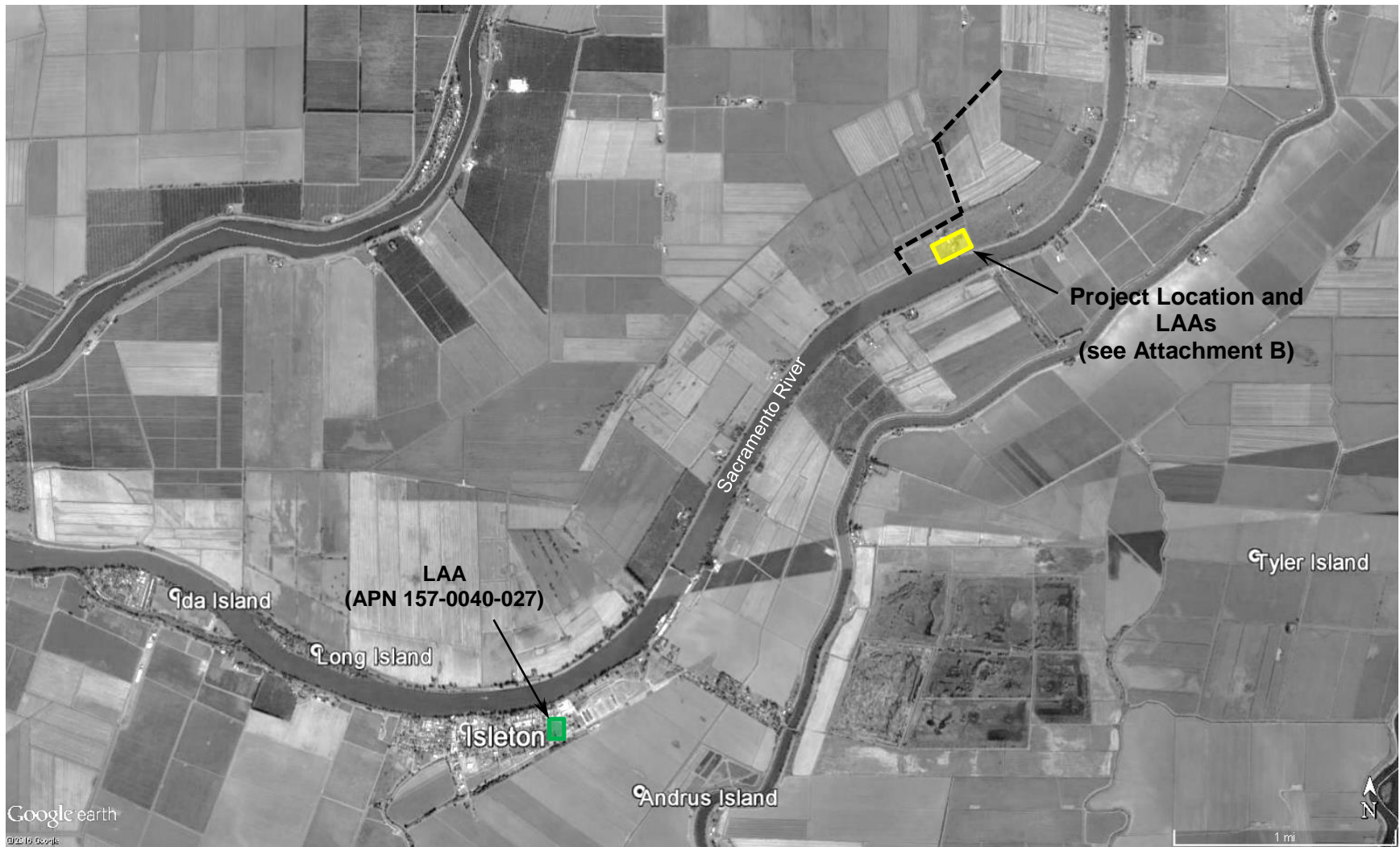
Central Valley Regional Water Quality Control Board
ECM Mailroom
11020 Sun Center Drive, Suite 200
Rancho Cordova, CA 95670

Now that the NOA has been issued, the Board's Compliance and Enforcement section will take over management of your case. Guy Childs is your new point of contact for any questions about the Waiver. If you find it necessary to make a change to your permitted operations, Guy will direct you to the appropriate Permitting staff. You may contact Guy at (916) 464-4648 or at gchilds@waterboards.ca.gov.

PAMELA C. CREEDON
Executive Officer

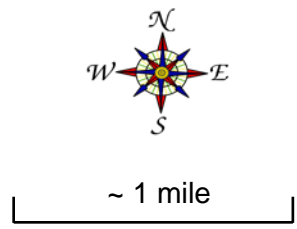
Enclosure: Waiver Order R5-2013-0145

cc w/o: Sacramento County Environmental Management Department, Mather



Legend

----- Unpaved Property Access Roads for Dust Suppression



**PG&E R-356 PIPELINE
RETIREMENT PROJECT**

SACRAMENTO COUNTY