

---

## Central Valley Regional Water Quality Control Board

31 May 2022

Heather Trejo  
Placer County Water Agency  
P.O. Box 6570  
Auburn, CA 95603

**CERTIFIED MAIL**  
**7021-0950-0000-9918-6188**

**NOTICE OF APPLICABILITY  
OF  
WAIVER OF REPORTS OF WASTE DISCHARGE AND WASTE DISCHARGE  
REQUIREMENTS FOR SPECIFIC TYPES OF DISCHARGE WITHIN THE CENTRAL  
VALLEY REGION,  
MIDDLE MEADOWS CAMPGROUND WELL INSTALLATION PROJECT,  
PLACER COUNTY WATER AGENCY, PLACER COUNTY**

On 9 May 2022, Placer County Water Agency (Discharger) submitted a Notice of Intent (NOI) to obtain coverage under the Waiver of Report of Waste Discharge and Waste discharge Requirements for Specific Types of Discharge within the Central Valley Region, Order R5-2018-0085 (the Waiver). The submittal contains all the information required to evaluate the applicability of the Waiver; therefore, the NOI is considered complete, and the discharge meets the conditions of the Waiver. The discharge is hereby covered under the Waiver, Order R5-2018-0085-0069. Please include this number on all correspondence related to this discharge. A copy of the Waiver is enclosed and is also available at the [State Water Boards' Adopted Orders: Waivers webpage](https://www.waterboards.ca.gov/centralvalley/board_decisions/adopted_orders/waivers/r5-2018-0085.pdf) ([https://www.waterboards.ca.gov/centralvalley/board\\_decisions/adopted\\_orders/waivers/r5-2018-0085.pdf](https://www.waterboards.ca.gov/centralvalley/board_decisions/adopted_orders/waivers/r5-2018-0085.pdf)).

### **PROJECT LOCATION**

The Discharger plans to install a new drinking water supply well on the Discharger's Middle Meadows Campground (Campground) on Hell Hole Road, in an unincorporated area of Placer County in the El Dorado National Forest. The Campground is located 22 miles east of Georgetown off of Wentworth Springs Road. This is in Township 14N, Range 13E, and Section 24 NE1/4 in the Sacramento River Basin. The well site is on 0.5 acres at 120° 27' 50.33" W, 39° 03' 09.20" N. The nearest surface water body, South Fork Long Canyon Creek, is more than 1000 feet from the well installation site.

The *Water Quality Control Plan for the Sacramento River and San Joaquin River Basins, Fifth Edition*, revised May 2018 (Basin Plan) establishes water quality objectives, contains implementation plans and policies for protecting waters of the basin, and incorporates by reference plans and policies adopted by the State Water

Resources Control Board. Pursuant to §13263(a) of the California Water Code (CWC), waste discharge requirements must implement the Basin Plan.

## **PROJECT DESCRIPTION**

The purpose of this project is to drill a fresh water supply well at the Middle Meadows Campground to replace a spring that is currently serving as the water supply. The well will be drilled to approximately 600 to 720 feet below ground surface. The well will be connected to the existing water tank via a new subsurface pipeline that will be installed by excavating a trench.

During well installation, development, and testing, groundwater will be discharged to forested ground north of the well building location. The contractor is to use approximately 200 feet of temporary discharge piping to convey the pumped groundwater away from the well site. Discharged water will flow out onto a clearing with approximately 30 feet by 30 feet of bermed area on a relatively flat open space surrounded by a heavily forested area with a slight surface gradient away from the well and trench site, allowing the water to percolate into the surface soil while avoiding direct contact of the water with the South Fork Long Canyon Creek. The contractor is required to implement best management practices (e.g., wattles, riprap, or other appropriate measures) to contain and control the dissipation of the water to prevent erosion and sediment transport to the South Fork Long Canyon Creek.

## **FACILITY-SPECIFIC REQUIREMENTS**

The discharge must comply with the Conditions of Discharge contained in Attachment A of the Waiver. The Discharger is responsible for compliance with the Waiver and must provide sufficient oversight to ensure compliance and prompt reporting of any noncompliance.

## **DOCUMENT SUBMITTALS**

All monitoring reports and other correspondence should be converted to searchable portable document format (PDF) and submitted electronically. Documents that are less than 50 MB should be emailed to: [centralvalleysacramento@waterboards.ca.gov](mailto:centralvalleysacramento@waterboards.ca.gov).

To ensure that your submittal is routed to the appropriate staff person, the following information should be included in the body of the email or any documentation submitted to the mailing address for this office:

Program:	Non-15 Compliance
Facility Name:	Middle Meadows Campground
CIWQS Place ID:	881200
Order:	R5-2018-0085-0069

Documents that are 50 MB or larger should be transferred to a CD, DVD, or flash drive and mailed to:

Central Valley Regional Water Quality Control Board  
ECM Mailroom  
11020 Sun Center Drive, Suite 200  
Rancho Cordova, CA 95670

Now that the NOA has been issued, the Board's Compliance and Enforcement section will take over management of your case. Guy Childs is your point of contact for any questions about compliance with the Waiver. If you find it necessary to make a change to your permitted operations, he will direct you to the appropriate permitting staff. You may contact Guy at (916) 464-4648 or at [guy.childs@waterboards.ca.gov](mailto:guy.childs@waterboards.ca.gov).

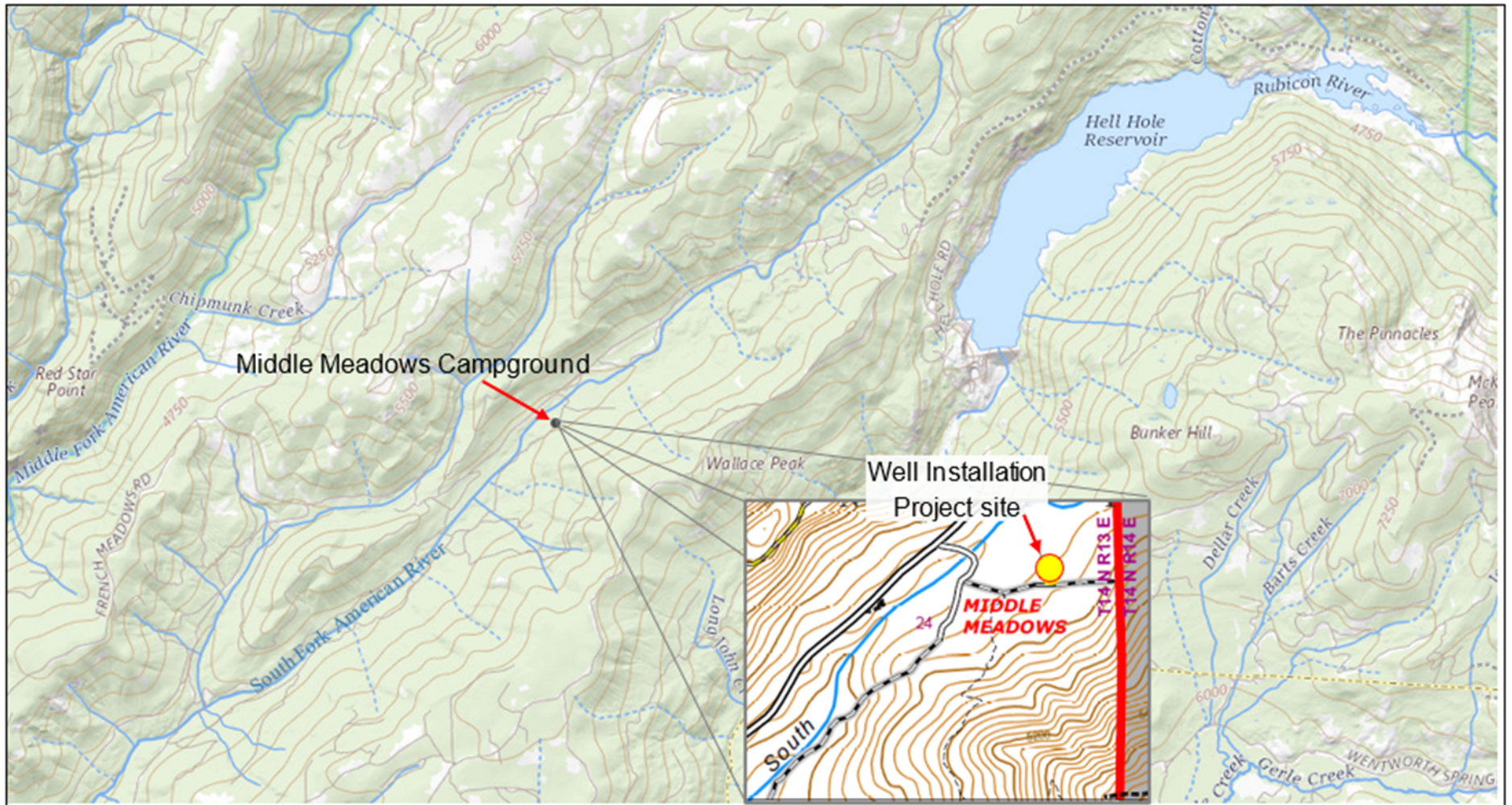
for Patrick Pulupa  
Executive Officer

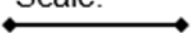

Enclosure: Attachment A: Site Location Map  
Attachment B: Site Plan  
Resolution No. R5-2018-0085

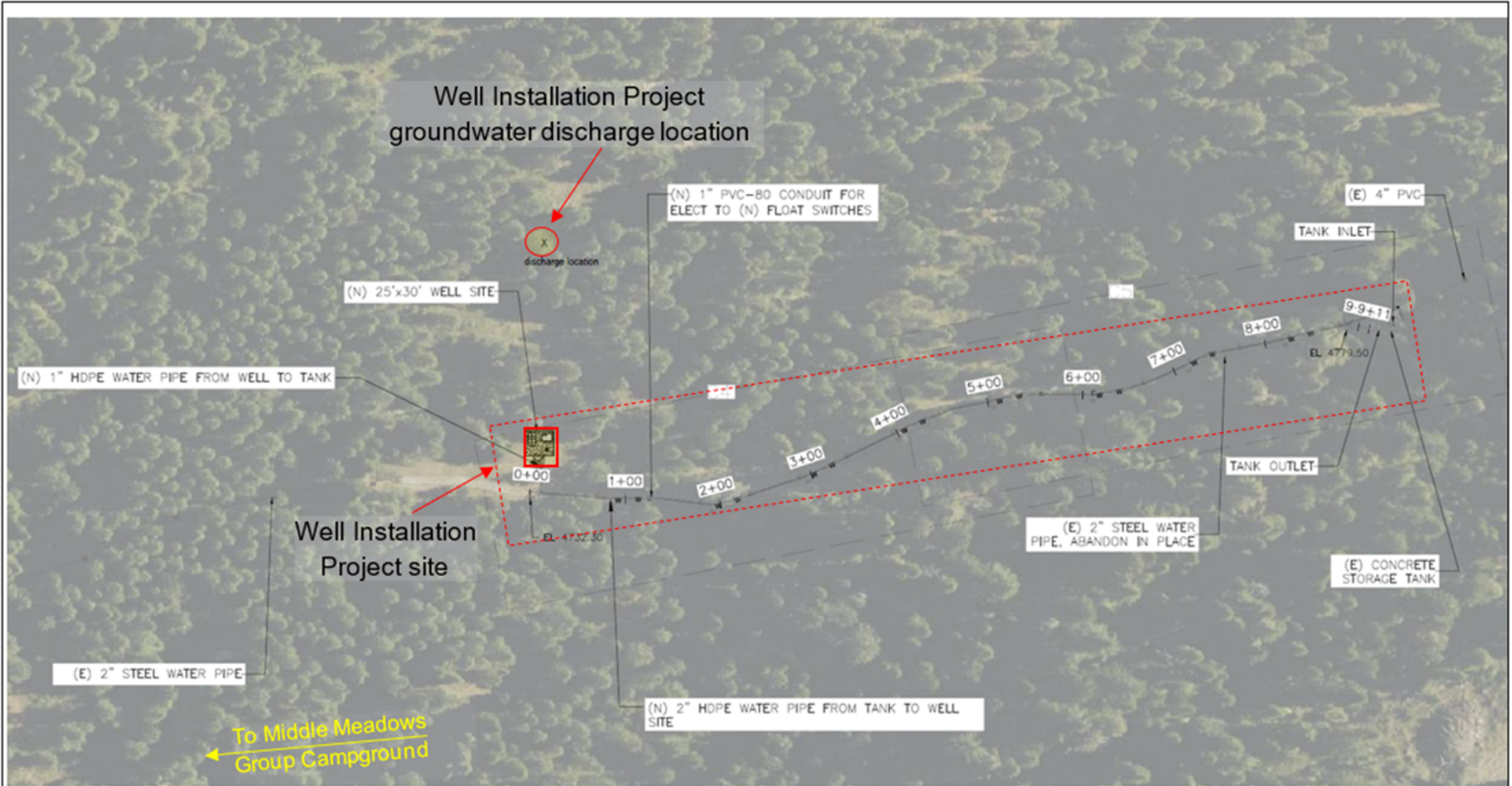
cc w/o enc: Mohan Ganapathy, Placer County Environmental Health Dept., Auburn  
Howard Hold, Central Valley Water Board, Rancho Cordova  
Guy Childs, Central Valley Water Board, Rancho Cordova

**PLACER COUNTY WATER AGENCY  
MIDDLE MEADOWS CAMPGROUND WELL INSTALLATION PROJECT  
PLACER COUNTY**

**ATTACHMENT A**



<p>Source: USGS 7.5-minute quadrangles <a href="https://viewer.nationalmap.gov">https://viewer.nationalmap.gov</a></p>	<p><b>SITE LOCATION</b> Placer County Water Agency Middle Meadows Campground Placer County</p>	<p>Scale:  1 mile</p> 
--	--	--



Source:  
 PCWA Middle Meadows Well Plan, Preliminary  
 by Peterson-Brustad Inc., 8 March 2022

**SITE PLAN**  
 Placer County Water Agency  
 Middle Meadows Campground  
 Well Installation Project  
 Placer County

Scale:  
 1 in. = approx. 70 ft.