

Figure 3-4. Number of UVA 254 data points at each station in the Central Valley Drinking Water Policy Workgroup database.

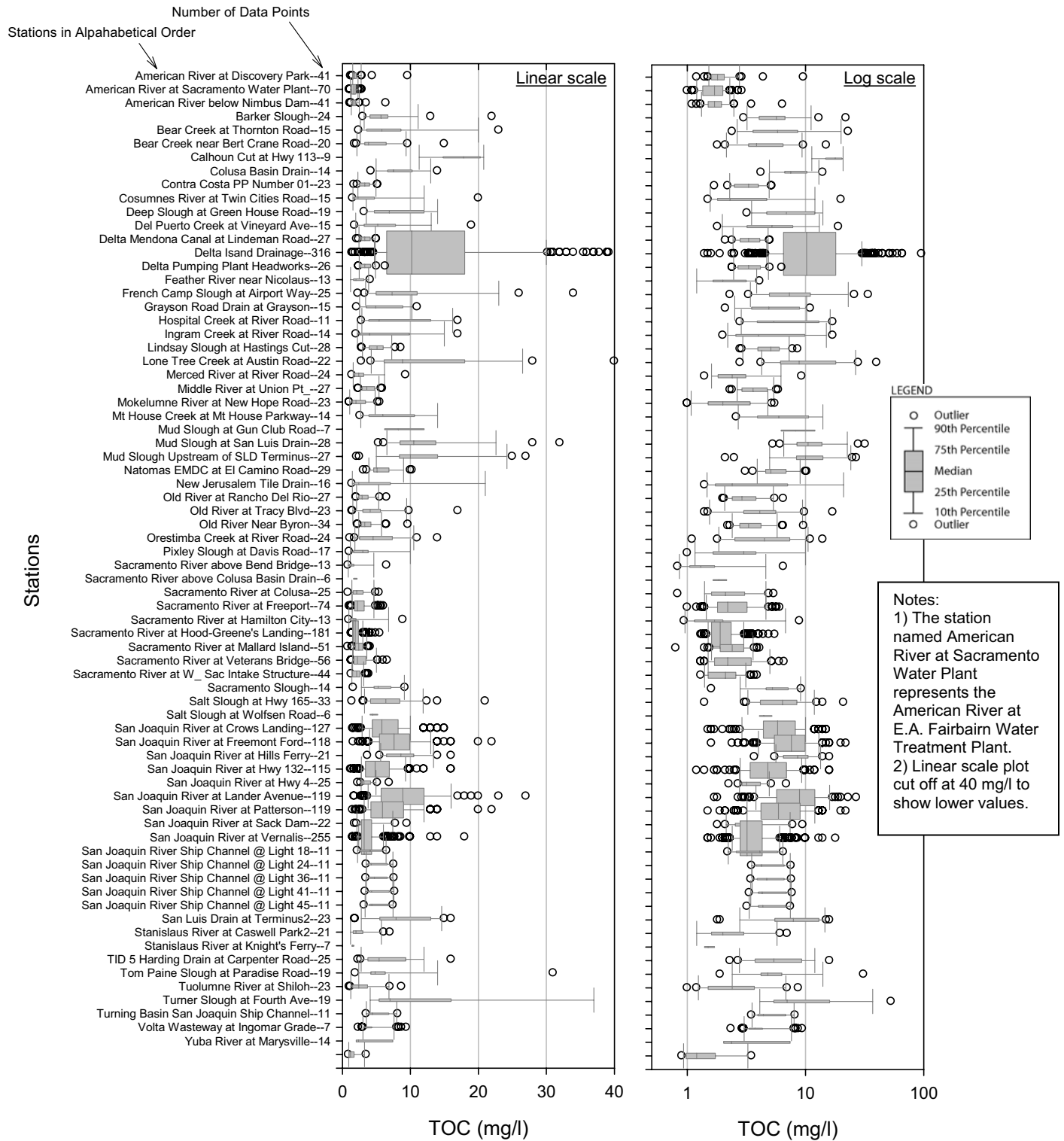


Figure 3-5. The range of TOC concentrations observed at different stations in the Central Valley and Delta. Box widths are proportional to the number of data points.

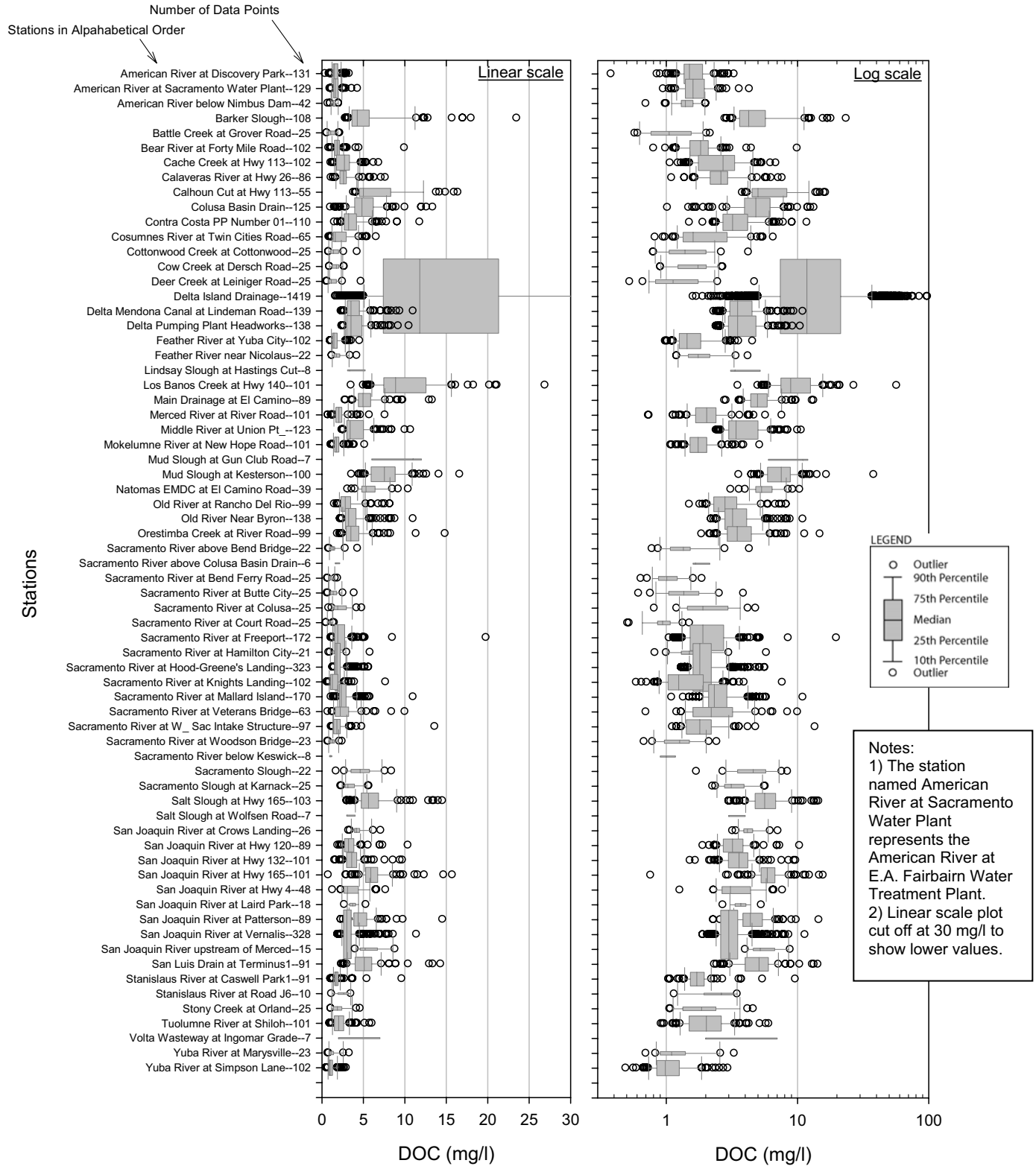


Figure 3-6. The range of DOC concentrations observed at different stations in the Central Valley and Delta. Box widths are proportional to the number of data points.

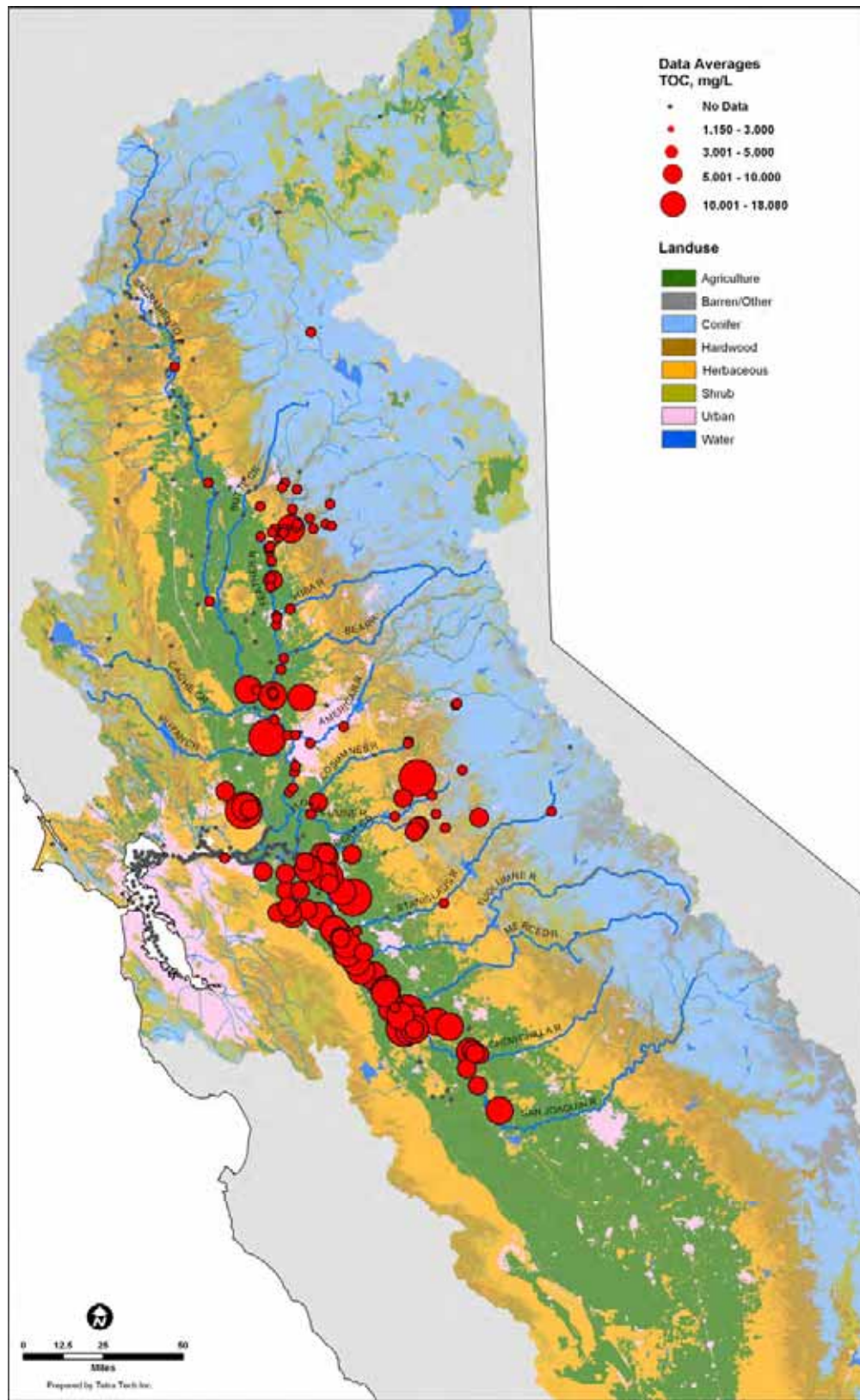


Figure 3-7. TOC concentrations in the Central Valley and Delta.

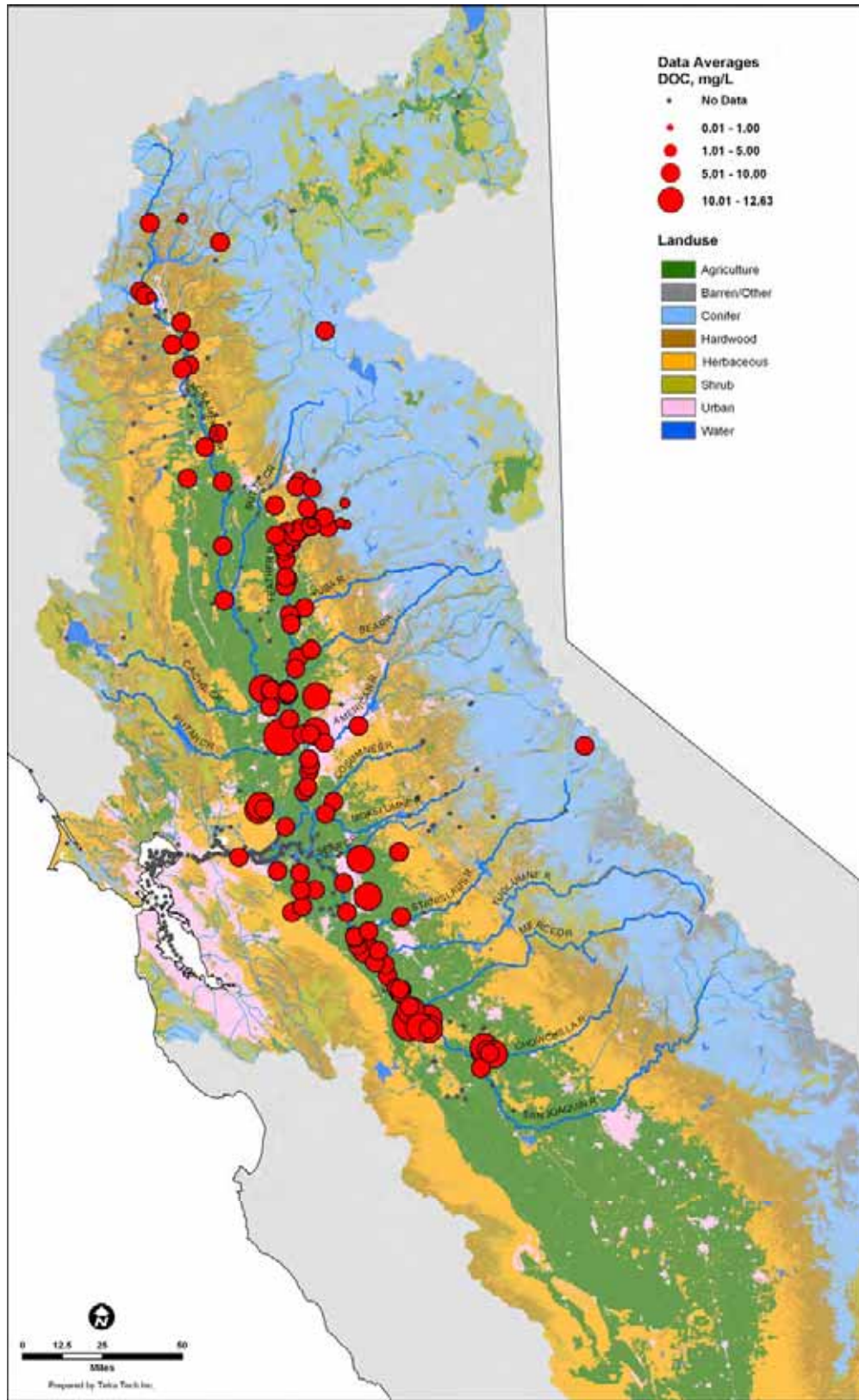


Figure 3-8. DOC concentrations in the Central Valley and Delta.