

W. J. ...

**CALIFORNIA REGIONAL WATER QUALITY CONTROL BOARD
COLORADO RIVER BASIN REGION**

ORDER NO. 88-53

**WASTE DISCHARGE REQUIREMENTS
FOR
COUNTY OF RIVERSIDE
MECCA II CLASS III WASTE MANAGEMENT FACILITY
East of Mecca - Riverside County**

The California Regional Water Quality Control Board, Colorado River Basin Region, finds that:

1. The County of Riverside, (hereinafter also referred to as the discharger), 11728 Magnolia Avenue, Suite A, Riverside, CA 92503 submitted current information on February 10, 1988, to update the waste discharge requirements for the existing disposal facility located in the S $\frac{1}{2}$ of the SW $\frac{1}{4}$ of Section 12, T7S, R9E, SBB&M.
2. The disposal facility has been subject to waste discharge requirements under Board Order No. 82-28. The waste discharge requirements are being updated to comply with Section 13263 of the California Water Code, and to incorporate the applicable provisions of Subchapter 15, Chapter 3, Title 23 of the California Code of Regulations.
3. The discharger submitted a technical report entitled, "Mecca II Sanitary Landfill Information Report", dated February 1988 containing technical information on the site and operational data including some of the technical information required in said Subchapter 15. The remainder of the required information of Subchapter 15 will be submitted with the Solid Waste Assessment Testing (SWAT) report, required by Section 13273 of the California Water Code, due on July 1, 1990, and in accordance with a time schedule included in the provisions of this Order.
4. The discharger reports that they are presently discharging 78 cubic yards per day of wastes. The site covers 80 acres which includes two separate (but adjacent) disposal fill areas, consisting of 53 acres with a capacity of 1,300,000 cubic yards, and 27 acres of an undetermined capacity for future expansion. The 53-acre site is anticipated to be operational until the year 2004. Berms would be constructed on the disposal site perimeters to provide a visual, sound, wind and drainage barrier to shield operations from adjacent properties.
5. The facility will be reclassified, in accordance with the criteria set forth in Subchapter 15 for Class III landfills, at the time the SWAT report is reviewed and a determination made as to the need to construct a liner with a leachate collection and removal system in new landfill areas within the facility or to relocate the facility. This will be based on the technical data contained in the SWAT report and other relevant information.
6. The discharger reports that the site presently receives residential/commercial refuse, plant trimmings, agricultural produce, tires and construction/demolition

*3-13-91
Superseded
with Order
91-0012*

wastes. The discharger further reports that hazardous wastes and septic wastes are not and will not be accepted.

7. A flood control levee constructed to protecte the Coachella Canal from runoff from the Mecca Hills crosses the site upgradient to the north and effectively prevents flood waters from reaching the site.
8. Wells near the site indicate that ground water, which is suitable for domestic use, is about 120 feet deep. No groundwater was encountered in a boring drilled at the site to 45 feet.
9. Annual averages for evaporation and precipitation in the area are 100 inches and 3.3 inches, respectively.
10. The disposal site is located approximately one mile southwest of the San Andreas fault zone.
11. The 100-year, 24-hour precipitation event for the site is 3.08 inches.
12. The site is not located within the 100-year floodplain.
13. The disposal site is constructed to slope generally to the southwest. The site is underlain by old alluvial deposits, consisting mostly of sand, gravel and streaks of clay. The soils in the area are highly permeable.
14. Attachments "A" and "B", which show the location of the site, are part of this Order.
15. The Water Quality Control Plan for the Colorado River Basin Region of California was adopted by the Regional Board on November 14, 1984.
16. The Basin Plan delineates the location of discharge to be in the Coachella Hydrologic Subunit which has the following beneficial uses of the groundwaters:
 - a. Municipal supply
 - b. Industrial supply
 - c. Agricultural supply
17. The Board has notified the discharger and interested agencies and persons of its intent to udpate waste discharge requirements for the discharge.
18. The Board in a public meeting heard and considered all comments pertaining to the existing discharge.
19. These waste discharge requirements govern an existing facility, which the discharger is currently operating, and therefore is exempt from the provisions of the California Environmental Quality Act in accordance with Section 15301, Chapter 3, Title 14 of the California Code of Regulations.

IT IS HEREBY ORDERED, the discharger shall comply with the following:

A. Discharge Specifications

1. The treatment or disposal of waste shall not cause pollution or a nuisance as defined in Section 13050 of the California Water Code.
2. Waste material shall be confined to the waste management facility as shown on the attached site maps.
3. Waste material shall not be discharged on any surface which is less than five feet above the highest anticipated ground water level.
4. The discharge shall not cause degradation of surface or ground waters.
5. The waste management units shall be designed, constructed, operated and maintained to prevent inundation or washout due to floods from a 100-year, 24-hour storm.
6. Surface drainage from tributary areas, and internal site drainage from surface or subsurface sources, shall not contact or percolate through the wastes discharged at this site.
7. The exterior surfaces of the disposal area including the intermediate and final landfill covers shall be graded and maintained to promote lateral runoff of precipitation and to prevent ponding.
8. The discharger shall remove and relocate any wastes which are discharged at this site in violation of these requirements.

B. Prohibitions

1. The discharge or deposit of hazardous waste (as defined in said Subchapter 15) at this site is prohibited.
2. The discharge or deposit of designated waste (as defined in said Subchapter 15) at this site is prohibited unless otherwise approved by the Executive Officer.
3. The discharge of liquid or semi-solid waste (i.e., waste containing less than 50 percent solids) to the landfill units is prohibited.
4. The discharge of wastes to surface waters or surface water drainage courses is prohibited.

C. Provisions

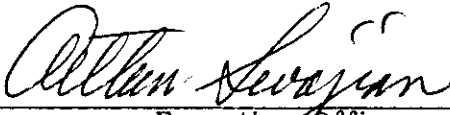
1. The discharger shall maintain a copy of this Order at the site and make it available at all times to site-operating personnel.
2. The discharger shall notify the Regional Board, in writing, of any proposed change in ownership or responsibility for construction or operation of the waste management facility.

3. The discharger shall notify the Regional Board of any material change or proposed change in the character, location, or volume of the wastes discharged and of any proposed expansion plans. This notification shall be accompanied by an amended report of waste discharge and any additional information as may be required by the Regional Board's Executive Officer.
4. The discharger shall comply with "Monitoring and Reporting Program No. 88-53" and future revisions thereto, as specified by the Regional Board's Executive Officer.
5. The discharger shall maintain legible records on the volume and type of each waste discharged at the site. These records shall be available for review by representatives of the Board at any time during normal business hours.
6. The discharger shall maintain monuments identifying the boundary limits of the entire waste management facility.
7. By May 1, 1989, the discharger shall submit to the Regional Board and to the State Department of Health Services for review and approval, a report describing a periodic load-checking program to be implemented by the discharger to ensure that wastes prohibited by this Order are not discharged to the disposal site.
8. One year prior to the anticipated closure of the facility or any unit (portion) thereof, the discharger shall submit to the Regional Board, for review and approval by the Executive Officer, a closure and post-closure maintenance plan in accordance with Section 2597 of said Subchapter 15.
9. By October 1, 1988, the discharger shall submit to the Regional Board for approval by the Executive Officer, a plan and time schedule for compliance with the requirements of the following sections of said Subchapter 15:
 - a. Section 2551: Required Programs
 - b. Section 2555: General Ground Water Monitoring Requirements
 - c. Section 2595: Waste Management Unit Characteristics
 - d. Section 2596: Design Report and Operations Plan
10. The discharger shall immediately notify the Regional Board of any flooding, slope failure or other change in site conditions which could impair the integrity of waste containment facilities or of precipitation and drainage control structures.
11. Annually, prior to the 1st day of November, any necessary erosion control measures shall be implemented and any necessary construction, maintenance, or repairs of precipitation and drainage control facilities shall be completed to prevent erosion or flooding of the site.
12. Water used for site maintenance shall be limited to the minimum amount necessary for dust control.
13. In the event of any change in ownership of the disposal site, the discharger shall notify the succeeding owner or operator in writing of the existence of this Order. A copy of that notification shall be sent to the Regional Board.

14. The discharger shall comply with all applicable provisions of Subchapter 15 that are not specifically referred to in this Order.

15. This Order supersedes Board Order No. 82-28.

I, Arthur Swajian, Executive Officer, do hereby certify the foregoing is a full, true and correct copy of an Order adopted by the California Regional Water Quality Control Board, Colorado River Basin Region, on May 12, 1988.



Executive Officer

CALIFORNIA REGIONAL WATER QUALITY CONTROL BOARD
COLORADO RIVER BASIN REGION

MONITORING AND REPORTING PROGRAM NO. 88-53
FOR
COUNTY OF RIVERSIDE
MECCA II CLASS III WASTE MANAGEMENT FACILITY
East of Mecca - Riverside County

Location of Discharge: S 1/2 of SW 1/4 of Section 12, T7S, R9E, SBB&M

MONITORING

The discharger shall monitor all wastes discharged to the disposal site and report to the Regional Board the following:


<u>Item</u>	<u>Reporting Unit</u>	<u>Frequency</u>
1. Refuse discharged	Cubic Yards	Quarterly
2. Any wastes discharged other than those allowed in the requirements	Type, Volume and exact Location	Immediately upon becoming aware that the waste has been discharged.
3. Landfill capacity remaining	Percent	Annually

REPORTING

1. Quarterly monitoring reports shall be submitted to the Regional Board by January 15, April 15, July 15, and October 15 of each year and an annual report by January 15 of each year.
2. Monitoring reports shall be certified under penalty of perjury to be true and correct and shall contain the required information at the frequency designated in the monitoring program.
3. Submit monitoring reports to:

California Regional Water Quality Control Board
Colorado River Basin Region
73-271 Highway 111, Suite 21
Palm Desert, CA 92260

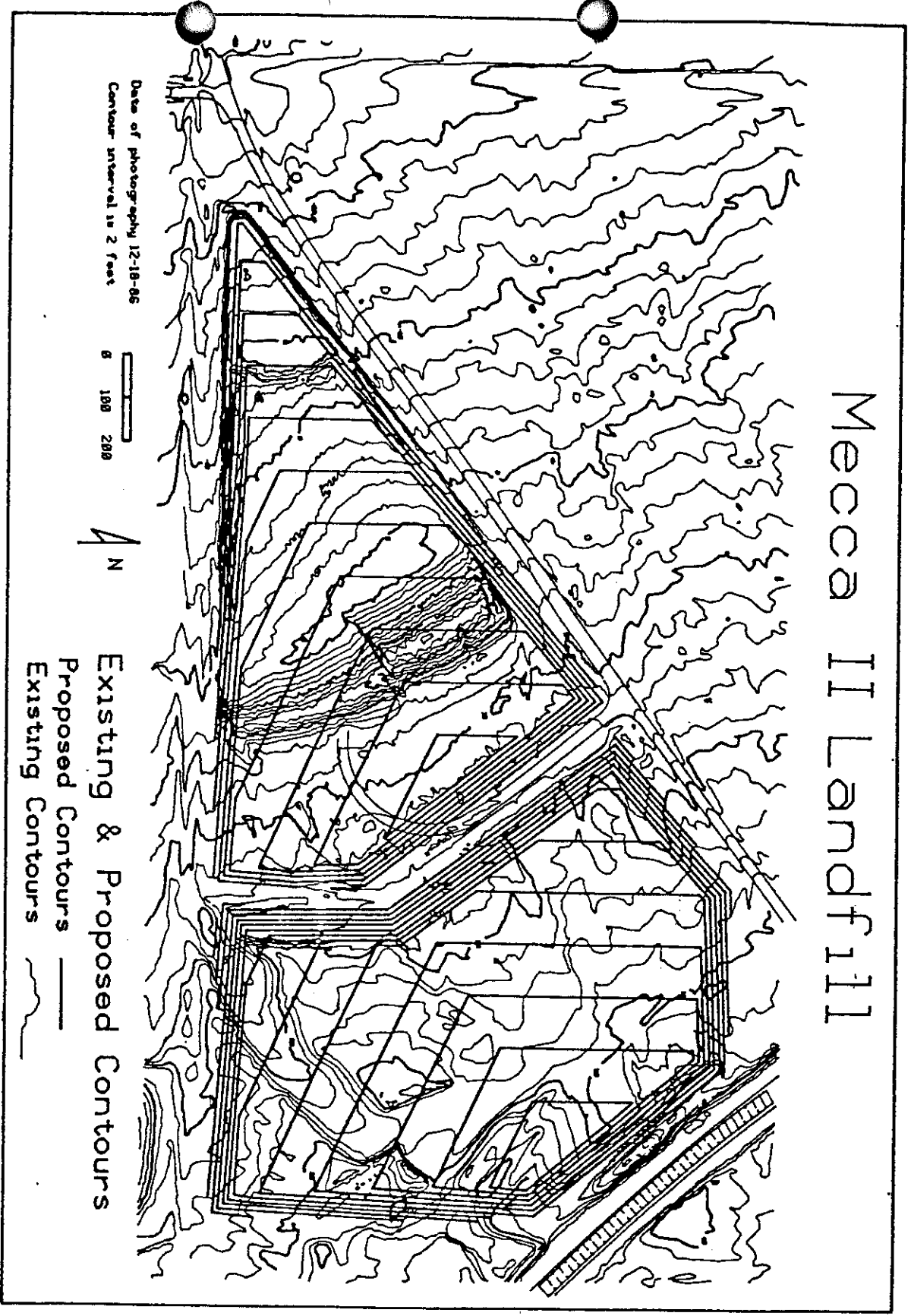
ORDERED BY:


Executive Officer

May 12, 1988

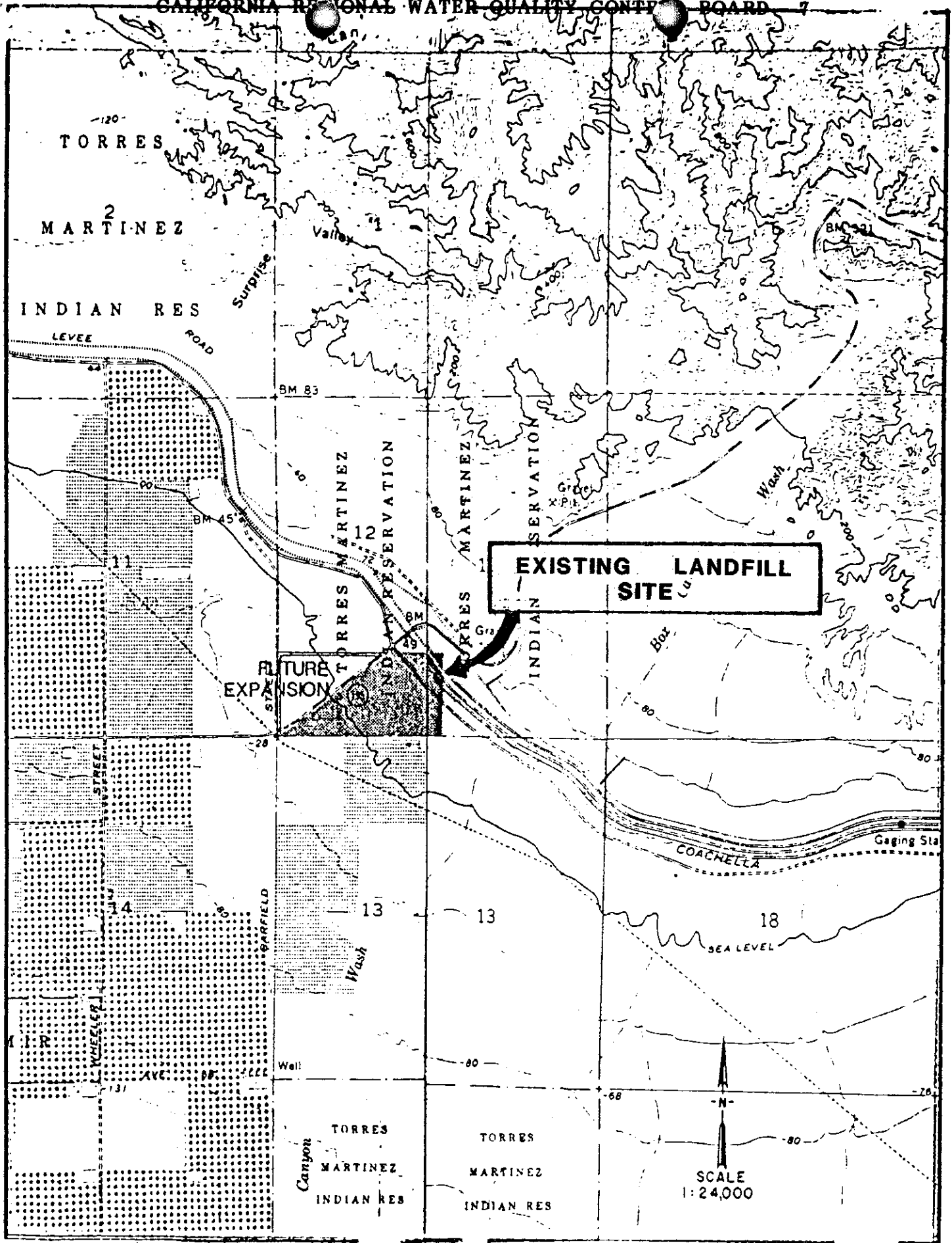
Date

Mecca II Landfill



COUNTY OF RIVERSIDE
 MECCA II CLASS III WASTE MANAGEMENT FACILITY
 East of Mecca - Riverside County

Order No. 88-53
 Attachment 'A'



COUNTY OF RIVERSIDE
 MECCA II CLASS III WASTE MANAGEMENT FACILITY
 East of Mecca - Riverside County