

CALIFORNIA REGIONAL WATER QUALITY CONTROL BOARD
COLORADO RIVER BASIN REGION

73-720 Fred Waring Dr. #100
Palm Desert, CA 92260
(760) 346-7491

[Regional Board Website](https://www.waterboards.ca.gov/coloradoriver) (<https://www.waterboards.ca.gov/coloradoriver>)

WASTE DISCHARGE REQUIREMENTS ORDER R7-2026-0007



ORDER INFORMATION

Order Type(s): Waste Discharge Requirements (WDRs)
Status: ADOPTED
Program: Non-15 Discharges to Land
Discharger(s): Two-Nine Hospitality, Inc. , doing
business as "Holiday Inn Express"
Facility: Holiday Inn Express 29 Palms
Wastewater Treatment and Disposal
Systems
Address: 72535 Twentynine Palms Highway,
Twentynine Palms, California 92277
County: San Bernardino County
APN(s): 0616-101-14-0-000
GeoTracker ID: WDR100033831
WDID: 7A361023001
Prior Order(s): R7-2009-0010, R7-2009-0010-01, R7-
2023-0043

GeoTracker ID: WDR100033831
WDID: 7A361023001

CERTIFICATION

I, Michael Placencia, Executive Officer, hereby certify that the following is a full, true, and correct copy of the order adopted by the California Regional Water Quality Control Board, Colorado River Basin Region, on April 14, 2026.

Original signed by

MICHAEL PLACENCIA

Executive Officer

TABLE OF CONTENTS

Table Index	iii
Glossary	iv
Findings	1
Introduction	1
Facility	2
General Site Conditions	4
Subsurface Conditions Groundwater	5
Regulatory Considerations.....	7
Waste Discharge Permitting Authority	7
Basin Plan Implementation	8
Antidegradation Policy	9
Stormwater	12
California Environmental Quality Act	12
Public Participation	12
Additional Water Quality Considerations	14
Requirements	15
A. Prohibitions.....	15
B. Groundwater Limitations.....	16
C. Discharge Specifications	17
D. Effluent Limitations	17
E. Subsurface Disposal System Specifications.....	18

TWO-NINE HOSPITALITY, INC.

HOLIDAY INN EXPRESS 29 PALMS WASTEWATER TREATMENT AND DISPOSAL SYSTEMS

SAN BERNARDINO COUNTY

TABLE OF CONTENTS

F. Solids Disposal Requirements..... 19

G. Monitoring Reporting and Notification Requirements 20

H. Other Provisions..... 24

Attachment A—Monitoring and Reporting Program 27

A. General Requirements 27

B. Monitoring Requirements 29

C. Reporting Requirements..... 33

Attachment B—Maps and Facility Diagrams 34

Figure 1. Facility Location..... 34

Figure 2. Facility Layout..... 35

Figure 3. Process Flow Diagram WWTF..... 36

Figure 4. Process Flow Diagram Laundry system..... 37

Attachment C—Typical Septic Tank Diagram..... 38

TABLE INDEX

Table 1. Main WWTF Effluent Characterization Data..... 3
Table 2. Laundry WWTF Effluent Characterization Data..... 3
Table 3. Capacity and Flow Design..... 4
Table 4. Twentynine Palms Water District Water Quality Results 6
Table 5. Effluent Limitations. 17
Table 6. Required Signatories for Submittals. 23
MRP Table 1. Source Water Monitoring Schedule..... 29
MRP Table 2. Influent Monitoring Schedule 29
MRP Table 3. Primary WWTF Effluent Monitoring Schedule 30
MRP Table 4. Secondary WWTF Effluent Monitoring Schedule. 31
MRP Table 5. Septic Tank Monitoring Schedule..... 32

TWO-NINE HOSPITALITY, INC.

HOLIDAY INN EXPRESS 29 PALMS WASTEWATER TREATMENT AND DISPOSAL SYSTEMS

SAN BERNARDINO COUNTY

GLOSSARY

Antidegradation PolicyStatement of Policy with Respect to Maintaining High Quality Waters in California, State Water Resources Control Board Resolution 68-16

AGRAgriculture

Basin PlanWater Quality Control Plan for Colorado River Basin Region (inclusive of all amendments)

BATBest Available Technology Economically Achievable

BCTBest Conventional Pollutant Control Technology

bgsBelow Ground Surface

BOD5/BODFive-Day Biochemical Oxygen Demand at 20°C

BPTCBest Practicable Treatment and Control

Cal OESCalifornia Governor's Office of Emergency Services

CDOCease and Desist Order

CEQACalifornia Environmental Quality Act
(Pub. Resources Code, § 21000 et seq.)

CEQA GuidelinesRegulations for Implementation of CEQA
(Cal. Code Regs., tit. 14, § 15000 et seq.)

CFRCode of Federal Regulations

DBADoing Business As

DTSCCalifornia Department of Toxic Substances Control

DWRCalifornia Department of Water Resources

ELAPEnvironmental Laboratory Accreditation Program

FEMAFederal Emergency Management Agency

TWO-NINE HOSPITALITY, INC.

HOLIDAY INN EXPRESS 29 PALMS WASTEWATER TREATMENT AND DISPOSAL SYSTEMS

SAN BERNARDINO COUNTY

GLOSSARY

ft.....feet

GPDGallons per Day

INDIndustrial

LOQlimits of quantitation

MBAmethylene blue active substances

MCL[s]Maximum Contaminant Level[s] for Drinking Water under Title 22

MDLmethod detection limits

mg/L.....Milligrams per Liter

MGDMillion Gallons per Day

MRPMonitoring and Reporting Program

MUNMunicipal

NOAA.....National Oceanic and Atmospheric Administration

NPDES.....National Pollutant Discharge Elimination System

PQL.....practical quantitation limit

ROWD.....Report of Waste Discharge

TDSTotal Dissolved Solids

Title 22.....California Code of Regulations, Title 22

Title 23.....California Code of Regulations, Title 23

Title 27.....California Code of Regulations, Title 27

TSSTotal Suspended Solids

TWO-NINE HOSPITALITY, INC.

HOLIDAY INN EXPRESS 29 PALMS WASTEWATER TREATMENT AND DISPOSAL SYSTEMS

SAN BERNARDINO COUNTY

GLOSSARY

USEPA.....United States Environmental Protection Agency

WDRs.....Waste Discharge Requirements

WOTUS.....Waters of the United States

WTTFWastewater Treatment Facility

WQO[s].....Water Quality Objective[s]

(findings begin on next page)

TWO-NINE HOSPITALITY, INC.

HOLIDAY INN EXPRESS 29 PALMS WASTEWATER TREATMENT AND DISPOSAL SYSTEMS

SAN BERNARDINO COUNTY

FINDINGS

The Colorado River Basin Regional Water Quality Control Board (Colorado River Basin Water Board) hereby finds as follows:

Introduction

1. This Order prescribes waste discharge requirements (WDRs) for Two-Nine Hospitality, Inc. (Discharger), which owns and operates the Holiday Inn Express 29 Palms Wastewater Treatment and Disposal Systems (collectively, Facility) in San Bernardino County.
2. The Facility serves the Holiday Inn Express & Suites Twentynine Palms-Joshua Tree Hotel (Hotel), which is currently discharging treated wastewater to seven seepage pits in its Western parking lot and six seepage pits in its Southern parking lot. The Hotel is located at 72535 Twentynine Palms Highway, Twentynine Palms, San Bernardino County Section 31, Township 1 North (T1N), Range 9 East (R9E), Mount San Bernardino Base and Meridian (SBB&M) as shown on the Maps and Facility Diagrams in [Figure 1](#).
3. On December 4, 2025, the Discharger submitted a Report of Waste Discharge (ROWD) applying for updates to its existing WDRs.
4. Regulatory coverage under this Order is strictly limited in scope to those waste discharges, activities and processes described and expressly authorized herein.
5. Pursuant to Water Code section 13264, subdivision (a), the Discharger is prohibited from initiating the discharge of new wastes (i.e., other than those described herein), or making material changes to the character, volume and timing of waste discharges authorized herein, without filing a new Report of Waste Discharge (ROWD) per Water Code section 13260. Failure to file a new ROWD before initiating material changes to the character, volume or timing of discharges authorized herein, shall constitute an independent violation of these WDRs.
6. This Order is also strictly limited in applicability to those individuals and/or entities specifically designated above as “Discharger,” subject only to the discretion to designate or substitute new parties in accordance with this Order.

TWO-NINE HOSPITALITY, INC.

HOLIDAY INN EXPRESS 29 PALMS WASTEWATER TREATMENT AND DISPOSAL SYSTEMS

SAN BERNARDINO COUNTY

Facility

7. The Facility consists of two separate wastewater treatment facilities (WWTFs) serving the Hotel. The primary WWTF, which handles domestic sewage generated by the 141-bed room hotel, has a disposable design capacity of 8,460 gallons per day (gpd); and the secondary WWTF, which handles gray water generated by the hotel's laundry facility, has a disposable design capacity of 6,472 gpd. Effluent from the laundry facility is kept separate from the effluent flowing to the main WWTF to avoid potential upsets caused by the bleach which is used to wash sheets and towels.
8. Primary WWTF: Located on the northwest corner of the Hotel property, the main WWTF is an activated sludge package treatment plant that includes: a 3,000-gallon holding tank, lift pump station, metering instrumentation, screening, equalization/anoxic tank, a secondary clarifier, and an aerobic sludge digester. Effluent is disposed of via seven seepage pits under the western parking lot, just south of the package plant; however, nine seepage pits, all 5 feet (ft) in diameter and 26 ft deep, have been identified onsite. Solids and sludge are removed by a licensed septage hauler.
9. Secondary WWTF: Wastewater from the laundry flows to a two-chamber (1,500 gallon) septic tank system and can be discharged to six seepage pits in the southern (back) parking lot. Two of the seepage pits are 5 ft in diameter with depths of 11 ft and 12 ft that were constructed as part of the original construction, and there are also four 5-foot diameter and 20-foot-deep pits constructed in 2019. The septic tanks are pumped as needed and there is ample discharge capacity in the laundry facility. A map showing the location of the septic tanks can be found in [Attachment B—Maps and Facility Diagrams](#)
10. The tables below summarize the Facility's effluent quality per Self-Monitoring Reports (SMR) from December 2022 through November 2025 (36 months).

TWO-NINE HOSPITALITY, INC.

HOLIDAY INN EXPRESS 29 PALMS WASTEWATER TREATMENT AND DISPOSAL SYSTEMS

SAN BERNARDINO COUNTY

Table 1. Main WWTF Effluent Characterization Data

Constituent	Units	Min	Average	Max
Effluent Flow	gpd ¹	2,742	4,328 ²	6,222
pH	Std. Units	6.6	7.6	14.4
Biochemical Oxygen Demand (BOD)	mg/L ³	0.2	13.7	67
Total Suspended Solids (TSS)	mg/L	1.2	17.7	121
Total Nitrogen	mg/L	2.7	15.2	44
Total Dissolved Solids (TDS)	mg/L	210	382	1,150

Table 2. Laundry WWTF Effluent Characterization Data

Constituent	Units	Min	Average	Max
Effluent Flow	gpd	923	1,575 ²	1,971 ²
pH	Std. Units	6.7	8.1	9.6
Methylene blue active substances (MBAs)	mg/L	0.3	5.7	47
TDS	mg/L	200	460	890

¹ Gallons per Day

² Value has been calculated and provided by the Discharger.

³ Milligrams per liter

TWO-NINE HOSPITALITY, INC.

HOLIDAY INN EXPRESS 29 PALMS WASTEWATER TREATMENT AND DISPOSAL SYSTEMS

SAN BERNARDINO COUNTY

11. The table below shows the design flow and capacity of the main WWTF and of the Laundry WWTF in gpd. The design is limited by either manufacturer recommendations or ground percolation limits. For the purposes of this order, capacity is defined as the physical ability to contain.

Table 3. Capacity and Flow Design

WWTF	Units	Max Capacity	Design Capacity
Main WWTF	gpd	12,000	8,460
Laundry WWTF	gpd	15,000	6,470

12. Beginning in 2020 (i.e., COVID pandemic), it became industry standard to strip the room and wash all linen, including bedspreads. This resulted in an increase in overall water consumption by the laundry system.
13. In 2023, the Colorado River Basin Water Board issued Cease and Desist Order R7-2023-0043 (CDO) to the Discharger based on numerous violations of the existing WDRs order (e.g., exceedance of effluent limits). The CDO required the Discharger to fully comply with the existing WDRs no later than October 1, 2024. Although the Discharger has submitted all of the technical reports required under the CDO, it is still exceeding the effluent limit for total nitrogen. Consequently, this Order requires the Discharger to conduct a nitrogen study.

General Site Conditions

14. According to National Oceanic and Atmospheric Administration (NOAA) Precipitation Frequency Atlas 14, Vol. 6 version 2, 100-year and 1,000-year, 24-hour rainfall events are estimated to result in 3.64 and 5.34 inches of precipitation, respectively⁴.

⁴ Source: [NOAA Precipitation Frequency Data Server](https://hdsc.nws.noaa.gov/hdsc/pfds)
(<https://hdsc.nws.noaa.gov/hdsc/pfds>)

TWO-NINE HOSPITALITY, INC.

HOLIDAY INN EXPRESS 29 PALMS WASTEWATER TREATMENT AND DISPOSAL SYSTEMS

SAN BERNARDINO COUNTY

15. Total annual precipitation averages 3.6 inches and averages 0.34 inches per month. The mean pan evaporation is approximately 76.3 inches per year⁵.
16. The site is relatively flat and has an average elevation of 2,070 feet above sea level. There are no surface waters in the surrounding area.
17. Land uses in the vicinity are based on the revised 2022 Twentynine Palms zoning map which include: general commercial, office commercial, tourist commercial, residential, public and flood way.
18. According to the Federal Emergency Management Agency's (FEMA) Flood Insurance Rate Map (<https://msc.fema.gov/portal>), the site is not within a Federal Emergency Management Agency (FEMA) designated 100-year flood plain. The site is designated as "Without base flood elevation".

Subsurface Conditions Groundwater

19. The site is located in a seismically active desert region approximately ½ mile from a known fault trace. The U.S Nuclear Regulatory Agency designates the region as a zone 3 with an estimated ground acceleration with a 10 percent probability of exceedance in 50 years of 0.3g.
20. A geotechnical engineering report titled "Geotechnical Investigation, Proposed Hampton Inn and Suites, Twentynine Palms, California, LCI Report No.: LP07249" was produced for the site in September 2007, by Landmark Geo-Engineers and Geologists. Landmark collected data from three (3) borings, B-1, B-2 and B-3 drilled to 41.5 feet, 28.5 feet and 31.5 feet below ground surface (bgs) respectively. The report also indicated the following:
 - a. The site is underlain by silty sands, and sands with some gravel;
 - b. Subsurface soils are medium dense to very dense;
 - c. Percolation rates varied from 4.6 to 5.6 gallons/day/ft²
 - d. No groundwater was encountered in the borings.

⁵ Twentynine Palms Groundwater Management Plan 2024 Update

TWO-NINE HOSPITALITY, INC.

HOLIDAY INN EXPRESS 29 PALMS WASTEWATER TREATMENT AND DISPOSAL SYSTEMS

SAN BERNARDINO COUNTY

21. The Facility does not have a groundwater monitoring network. Given the relatively small discharge volume and continued effluent monitoring, this Order continues to not require groundwater monitoring at the site.
22. The Twentynine Palms Water District (District) provides domestic water services to the City of Twentynine Palms. Water is supplied by eight groundwater wells. Well data indicates high quality areal groundwater is at least 200 feet bgs and moves generally to the Northeast. Table 3 below summarizes the results of the District's 2024 Consumer's Confidence Report.

Table 4. Twentynine Palms Water District Water Quality Results

Constituent	Units	Average	Range
Arsenic	µg	1.9	ND-7.0
Chromium	µg	ND	ND
Copper	mg/L	ND	-
Fluoride	mg/L	1.16	ND-2.0
Nitrate as N	mg/L	2.44	0.64-7.1
TDS	mg/L	228	160-400
Chloride	mg/L	13	7.1-30
Sulfate	mg/L	30	9.1-97
Sodium	mg/L	45	18-120

23. The nearest well to the proposed discharge is more than a mile from the Facility.

TWO-NINE HOSPITALITY, INC.

HOLIDAY INN EXPRESS 29 PALMS WASTEWATER TREATMENT AND DISPOSAL SYSTEMS

SAN BERNARDINO COUNTY

Regulatory Considerations

Waste Discharge Permitting Authority

24. This Order is issued pursuant to Water Code section 13263, subdivision (a), which provides that “[t]he regional board, after any necessary hearing, shall prescribe requirements as to the nature of any proposed discharge, existing discharge, or material change in an existing discharge..., with relation to the conditions existing in the disposal area or receiving waters upon, or into which, the discharge is made or proposed.”
25. The statute further provides that WDRs “shall implement ... water quality control plans and shall take into consideration the beneficial uses to be protected, the water quality objectives reasonably required for that purpose, other waste discharges, the need to prevent nuisance,⁶ and the provisions of Section 13241.” (Wat. Code, § 13263, subd. (a).)
26. The ability to discharge wastewater is a privilege, not a right. The adoption of this Order shall not be construed as establishing a vested right in the continuance of discharge activities. (Wat. Code, § 13263, subd. (g).)
27. For the purposes waste discharge fees under California Code of Regulations, title 23 (Title 23), section 2200, the Facility has a threat-complexity rating of **2B**
 - a. Threat Category “2” reflects waste discharges that can impair receiving water beneficial uses, cause short-term water quality objective violations, cause secondary drinking water standard violations, and cause nuisances.
 - b. Complexity Category “B” reflects any discharger not included in Category A, with either (1) physical, chemical or biological treatment systems (except for septic systems with subsurface disposal), or (2) any Class II or Class III WMUs

⁶ “Nuisance” is defined by statute as a condition that: “(1) Is injurious to health, or is indecent or offensive to the senses, or an obstruction to the free use of property, so as to interfere with the comfortable enjoyment of life or property[;] [¶] (2) Affects at the same time an entire community or neighborhood, or any considerable number of persons...[;] [and] [¶] (3) Occurs during, or as a result of, the treatment or disposal of wastes.” (Wat. Code, § 13050, subd. (m).)

TWO-NINE HOSPITALITY, INC.

HOLIDAY INN EXPRESS 29 PALMS WASTEWATER TREATMENT AND DISPOSAL SYSTEMS

SAN BERNARDINO COUNTY

Basin Plan Implementation

28. The Water Quality Control Plan for the Colorado River Basin Region (Basin Plan) designates beneficial uses of groundwater and surface water within the region, establishes numeric and narrative water quality objectives (WQOs) protective of such uses, and incorporates applicable State Water Resources Control Board (State Water Board) plans and policies.
29. This Order prescribes WDRs for discharges to groundwater within the Coachella Valley Planning Area, Twentynine Palms HA (709.10), for which the designated beneficial uses of groundwater are as follows:
 - a. Municipal and Domestic Supply (MUN);
 - b. Agricultural Supply (AGR); and
 - c. Industrial Supply (IND).
30. The Basin Plan establishes the following WQOs for MUN-designated groundwater:
 - a. Tastes and Odors (Narrative): Groundwater shall not contain taste or odor-producing substances that adversely affect beneficial uses as a result of human activity (Ch. 3, § IV.A);
 - b. Coliform Bacteria (Numeric): Groundwater shall not contain coliform organisms in exceedance of the limits specified in California Code of Regulations, title 22 (Title 22), section 64426.1 (Ch. 3, § IV.B); and
 - c. Chemical Constituents (Numeric): Groundwater shall not contain organic and inorganic chemical constituents in concentrations exceeding the Primary Maximum Contaminant Levels (MCLs) established for drinking water per Title 22, sections 64431, 64444 and 64678 (Ch. 3, § IV.C).
31. Although they are not universally incorporated into the Basin Plan as numeric WQOs for MUN-designated groundwater, the Secondary MCLs, established for drinking water per Title 22, section 64449, are appropriate in most cases for use as site-specific numeric limits supporting the narrative WQO for groundwater tastes and odors. Specifically with respect to Total Dissolved Solids (TDS), the Title 22 Secondary MCL specifies a recommended limit of 500 mg/L, and an

TWO-NINE HOSPITALITY, INC.

HOLIDAY INN EXPRESS 29 PALMS WASTEWATER TREATMENT AND DISPOSAL SYSTEMS

SAN BERNARDINO COUNTY

upper limit of 1,000 mg/L.⁷ Given the relatively low concentrations of TDS in local groundwater and the water supply, this Order incorporates a site-specific numeric limit of 500 mg/L as supporting the narrative WQO.

32. With respect to the numeric WQO for chemical constituents, the Primary MCL for nitrate plus nitrite is 10 mg/L.

Antidegradation Policy

33. The Basin Plan incorporates the State Water Board's *Statement of Policy with Respect to Maintaining High Quality Waters in California*, Resolution 68-16 (Antidegradation Policy), which prohibits the Colorado River Basin Water Board from authorizing discharges that will result in the degradation of "high quality waters," unless it is demonstrated that any such degradation in water quality:
34. Will not unreasonably affect beneficial uses,⁸ or otherwise result in water quality less than that prescribed in applicable plans and policies (e.g., violation of WQOs);
- a. Will be mitigated through best practicable treatment and control (BPTC);
 - b. Is consistent with maximum benefit to the people of the state of California.
35. Based on experiences with similar facilities, Colorado River Basin Water Board staff have identified the following constituents with the potential to degrade groundwater in the Facility's effluent:
- a. Nitrate and Nitrite;
 - b. TDS (Salinity); and

⁷ Salinity may alternatively be expressed in terms of microsiemens per centimeter ($\mu\text{S}/\text{cm}$) of Electrical Conductivity (EC). As a Secondary MCL, Title 22 specifies a recommended limit of 900 $\mu\text{S}/\text{cm}$, and an upper limit of 1,600 $\mu\text{S}/\text{cm}$.

⁸ The Water Code defines "Pollution" in relevant part as the "alteration of the quality of the waters of the state by waste to a degree which unreasonably affects ... [¶] [t]he waters for beneficial uses." (Wat. Code, § 13050, subd. (l)(1)(A).)

TWO-NINE HOSPITALITY, INC.

HOLIDAY INN EXPRESS 29 PALMS WASTEWATER TREATMENT AND DISPOSAL SYSTEMS

SAN BERNARDINO COUNTY

c. Coliform Organisms.

36. **Nitrate/Nitrite:** The numeric WQO (Primary MCL) for Nitrate plus Nitrite is 10 mg/L. To address this WQO, the Board previously required monitoring and compliance with a 10 mg/L effluent limit for total nitrogen. For the reasons discussed below, this Order no longer imposes a strict effluent limit for total nitrogen. Even so, it is not expected that the Facility's discharge will result in groundwater that does not meet the 10 mg/L WQO.

- a. Between December 2022 and November 2025, the primary WWTF's effluent had an average total nitrogen concentration of 15.2 mg/L (range of 2.7 to 44 mg/L). However, following adoption of the CDO and substantial improvements to the treatment system, the average concentration reduced from 27 mg/L in 2023 to 10.8 mg/L in 2025. Despite these improvements, the primary WWTF effluent is still not expected to meet the existing limits.
- b. It should also be noted that the above data is for the primary WWTF that handles the Hotel's domestic wastewater; it does not reflect the secondary WWTF that handles the Hotel's laundry facilities. Further, the secondary WWTF effluent is presumed to have substantially lower concentrations of total nitrogen. Thus, the secondary WWTF effluent is expected to dilute the primary WWTF effluent as it percolates to groundwater.
- c. As noted the findings above, the depth of first-encountered groundwater is not known at this location—though the depth appears to be between 41.5 and 200 feet below ground surface. The Facility also has a relatively small volume of discharge (approx. 4,000 gallons/day in the hotel effluent and 1,900 gallons/day in the laundry effluent). Given the depth to groundwater and small discharge volume, it is likely that any total nitrogen discharges (nitrate, nitrite or otherwise) will be substantially attenuated before reaching the aquifer. As a result, it is not anticipated that the nitrogen in the Facility's effluent will substantially degrade groundwater quality or otherwise cause groundwater to not meet the applicable WQO.
- d. Notwithstanding the foregoing, this Order and its Monitoring and Reporting Program (MRP) require the Discharger to begin monitoring total nitrogen in the influent and effluent of each WWTF, and to calculate the average nitrogen removal percentage for each reporting period. This information will be used to determine whether the Discharger could comply with a nitrogen removal performance standard when these WDRs are revised or updated.

TWO-NINE HOSPITALITY, INC.

HOLIDAY INN EXPRESS 29 PALMS WASTEWATER TREATMENT AND DISPOSAL SYSTEMS

SAN BERNARDINO COUNTY

37. **TDS (Salinity):** This Order incorporates a site-specific numeric limit of 500 mg/L supporting the tastes and odors narrative WQO. Because the Facility's wastewater is less than the limit, it is not anticipated that the discharges will result in underlying groundwater not meeting the narrative WQO. Other WDRs have implemented a 400 mg/L TDS limit above the water supply. To be consistent with other WDRs for other facilities, a TDS limit of 400 mg/L plus the 5-year average water supply TDS shall be implemented. The 5-year average TDS in the water supply and effluent is 288 mg/L and 408 mg/L (493 mg/L in the laundry effluent) respectively. This Order also sets the TDS limit at 688 mg/L for consistency with other orders for similar facilities.
38. **Coliform Organisms:** The most probable number (MPN) of coliform organisms in untreated domestic wastewater is typically 10^7 to 10^8 per 100 mL, and in secondary-treated wastewater, an MPN of 10^5 to 10^6 organisms per 100 mL. (USEPA, Design Manual: Municipal Wastewater Disinfection, EPA/625/1-86/021, Oct. 1986.) The depth to groundwater is approximately 200 feet bgs; it is unlikely that pathogen-indicator bacteria will reach groundwater in excess of that prescribed in Title 22, section 64426.1.
39. The Discharger's wastewater treatment system represents the best practicable treatment and control (BPTC) of the wastewater generated at the Facility. Moreover, the discharge has been and will continue to be confined to a reasonable area (leach field) and is not anticipated to result in a condition of pollution or nuisance.
40. Notwithstanding implementation of BPTC (see above), a limited degree of groundwater quality degradation will occur as a result of the Facility's operation—specifically in terms of nitrate/nitrite and TDS (and possibly total coliform). However, such degradation nevertheless is consistent with the maximum benefit to the people of the state of California. The Facility supports the economic prosperity of the community by the employment of full-time and part-time personnel. The economic prosperity of surrounding communities and associated industries is of maximum benefit to the people of the state and provides sufficient justification for allowing the limited groundwater degradation that may occur under this Order.
41. Based on the foregoing considerations, the wastewater discharges authorized under this Order are consistent with the Antidegradation Policy.

TWO-NINE HOSPITALITY, INC.

HOLIDAY INN EXPRESS 29 PALMS WASTEWATER TREATMENT AND DISPOSAL SYSTEMS

SAN BERNARDINO COUNTY

Stormwater

42. On July 1, 2015, the State Water Board adopted Water Quality Order 2014-0057-DWQ (National Pollutant Discharge Elimination System Permit No. CAS000001), *General Permit for Storm Water Discharges Associated with Industrial Activities* (Industrial General Permit). Facilities used in the storage, treatment, recycling, and reclamation of municipal or domestic sewage with a design flow of one million gallons per day (1.0 MGD) or more, or that are required to have an approved pretreatment program under 40 Code of Federal Regulations part 403, must enroll under the Industrial General Permit, unless there is no discharge of industrial stormwater to waters of the United States (WOTUS).⁹ Because the combined average discharge of the primary and secondary WWTF is below 1.0 MGD, the Facility is not subject to the stormwater program.

California Environmental Quality Act

43. The adoption of this Order is categorically exempt from the procedural requirements of the California Environmental Quality Act (CEQA) (Pub. Resources Code, § 21000 et seq.), as the Facility is “an existing facility” with negligible or no expansions in use. (See Cal. Code Regs., tit. 14, 15301.)

Public Participation

44. Water Code section 13149.2, subdivision (d) requires that the Colorado River Basin Water Board, “[w]hen issuing ... individual waste discharge requirements ... that regulate activity or a facility that may impact a disadvantaged¹⁰ or tribal

⁹ USEPA regulations for stormwater discharges were promulgated on November 16, 1990 (40 C.F.R. parts 122, 123, and 124) to implement the Clean Water Act’s stormwater program set forth in Clean Water Act section 402(p) (33 U.S.C. §1342(p)). In relevant part, the regulations require specific categories of facilities that discharge stormwater associated with industrial activity to WOTUS to obtain National Pollutant Discharge Elimination System (NPDES) permits and to require control of such pollutant discharges using Best Available Technology Economically Achievable (BAT) and Best Conventional Pollutant Control Technology (BCT) to prevent and reduce pollutants and any more stringent controls necessary to meet water quality standards.

¹⁰ For the purposes of this requirement, a “disadvantaged community” is defined as a “community in which the median household income is less than 80 percent of the statewide annual median household income level.” (Wat. Code, § 13149.2, subd. (f)(1).)

TWO-NINE HOSPITALITY, INC.

HOLIDAY INN EXPRESS 29 PALMS WASTEWATER TREATMENT AND DISPOSAL SYSTEMS

SAN BERNARDINO COUNTY

community,¹¹ and that includes a time schedule in accordance with subdivision (c) of Section 13263 for achieving an applicable water quality objective, an alternative compliance path that allows time to come into compliance with water quality objectives, or a water quality variance....” must include finding(s) regarding “potential environmental justice,¹² tribal impact, and racial equity considerations” that are relevant to the permitting action. This Order does not incorporate a time schedule for compliance with applicable WQOs, or any of the other provisions described in Water Code section 13149.2, subdivision (d). Accordingly, no additional findings are necessary under section 13149.2.

45. In developing these WDRs, Colorado River Basin Water Board staff have complied with Water Code section 189.7, subdivision (a)(1), which requires “equitable, culturally relevant community outreach to promote meaningful civil engagement from potentially impacted communities of proposed discharges of waste that may have disproportionate impacts on water quality in disadvantaged communities or tribal communities....”
46. The Board has notified the Discharger and all known interested agencies and persons of its intent to draft WDRs for this discharge and has provided them with an opportunity for a public meeting and an opportunity to submit comments. (Wat. Code, § 13167.5.)
47. The Board, in a public meeting, heard and considered all comments pertaining to this discharge.

¹¹ For the purposes of this requirement, a “tribal community” is defined as a “community within a federally recognized California Native American tribe or nonfederally recognized Native American tribe on the contact list maintained by the Native American Heritage Commission for the purposes of Chapter 905 of the Statutes of 2004.” (Wat. Code, § 13149.2, subd. (f)(2).)

¹² Water Code section 13149.2 incorporates the general definition of “environmental justice” in Public Resources Code section 30107.3, subdivision (a): “the fair treatment and meaningful involvement of people of all races, cultures, incomes, and national origins, with respect to the development, adoption, implementation, and enforcement of environmental laws, regulations, and policies.” (Wat. Code, § 13149.2, subd. (f).)

TWO-NINE HOSPITALITY, INC.

HOLIDAY INN EXPRESS 29 PALMS WASTEWATER TREATMENT AND DISPOSAL SYSTEMS

SAN BERNARDINO COUNTY

Additional Water Quality Considerations

48. This Order, which prescribes WDRs in accordance with the Basin Plan, for wastewater that does not need to be managed as “hazardous waste,” is exempt from the prescriptive requirements of California Code of Regulations, title 27 (Title 27), section 20005 et seq. (Cal. Code Regs., tit. 27, § 20090.)
49. Water Code section 106.3, subdivision (a) provides that it is “the established policy of the state that every human being has the right to safe, clean, affordable, and accessible water adequate for human consumption, cooking, and sanitary purposes.” Although subdivision (a) does not apply directly to the prescribing of WDRs (see Wat. Code, § 106.3, subd. (b)), this Order nevertheless furthers the stated policy by requiring that the receiving groundwater comply with WQOs protective of MUN beneficial uses.
50. This Order may be modified, revoked and reissued, or terminated for cause. The filing of a request by the Discharger for an order modification, rescission, or reissuance, or the Discharger’s notification of planned changes or anticipated noncompliance, does not stay any Order condition. Causes for modification include, but are not limited to, the violation of any term or condition contained in this Order, a material change in the character, location, or volume of discharge, a change in land application plans or sludge use/disposal practices, or the adoption of new regulations by the State Water Board, Colorado River Basin Water Board (including revisions to the Basin Plan), or federal government.

Monitoring and Reporting Requirements

51. This Order is also issued pursuant to Water Code section 13267, subdivision (b)(1), which provides that the Board may require that persons discharging waste within the region “shall furnish, under penalty of perjury, technical or monitoring program reports...,” provided that the discharger’s burdens of compliance, including costs, is reasonable relative to the need for the submittals and the benefits to be obtained.
52. The various notifications, technical reports and monitoring program reports required under this Order, including those contained within Monitoring and Reporting Program (MRP) in [Attachment A—Monitoring and Reporting Program](#), are necessary to ensure compliance with the WDRs. The burdens of monitoring and reporting imposed on the Discharger under this Order and the SMP are reasonable relative to the need for compliance described above.

TWO-NINE HOSPITALITY, INC.

HOLIDAY INN EXPRESS 29 PALMS WASTEWATER TREATMENT AND DISPOSAL SYSTEMS

SAN BERNARDINO COUNTY

53. The Executive Officer may issue a Revised MRP as a standalone order, pursuant to delegated authority under Water Code section 13267. Upon issuance, the Revised MRP shall supersede the provisions of [Attachment A—Monitoring and Reporting Program](#).
54. Water Code section 13267, subdivision (b)(1) authorizes Regional Water Boards to require technical and monitoring reports. The Monitoring and Reporting Program (MRP) establishes monitoring and reporting requirements to implement federal and state requirements.
55. The various notifications, technical reports and monitoring program reports required under this Order, including those contained within the Monitoring and Reporting Program (MRP) in [Attachment A—Monitoring and Reporting Program](#), are necessary to ensure compliance with the WDRs.
56. In accordance with section 13267, the burdens of monitoring and reporting imposed on the Discharger under this Order and the separately adopted MRP, are reasonable relative to the need for compliance described above.

REQUIREMENTS

IT IS HEREBY ORDERED, pursuant to Water Code sections 13263 and 13267, that R7-2009-0010 and its amendment R7-2009-0010-01 is rescinded (except for enforcement purposes), and that the Discharger shall comply with the following requirements.

A. Prohibitions

1. Waste classified as “hazardous,” as defined in Title 27, section 20164, or constituting “designated waste,” as defined in Water Code section 13173, shall not be discharged at the Facility.
2. The storage, treatment, or disposal of waste at the Facility shall not cause conditions constituting a “contamination,” “pollution,” or “nuisance,” as defined per subdivisions (k), (l), and (m) of Water Code section 13050.
3. Discharge of treated or untreated wastewater at a location other than the Designated Disposal Area specified in Findings [8](#) & [9](#), or in a manner other than as described in the findings is prohibited.

TWO-NINE HOSPITALITY, INC.

HOLIDAY INN EXPRESS 29 PALMS WASTEWATER TREATMENT AND DISPOSAL SYSTEMS

SAN BERNARDINO COUNTY

4. The Facility shall be maintained to prohibit sewage or treated effluent from surfacing or overflowing.
5. Except as authorized in another order (i.e., NPDES permit), waste and wastewater shall not be discharged to:
 - a. Any surface waters or water courses; or
 - b. Land that is not owned by the Discharger, or validly authorized for such use by the owner in writing
6. Surfacing or ponding of wastewater outside of the designated disposal locations is prohibited.
7. The discharge of wastewater to land not controlled by the Discharger, or not authorized for such use, is prohibited.
8. Untreated or partially treated wastewater (e.g., bypass or overflow) shall not be discharged at or from the Facility to land, surface water, water courses or groundwater. If a bypass is necessary for emergency use or maintenance, a request to the Executive Officer in writing shall be made for their approval.
9. Objectionable odors, originating from the Facility and associated with the generation, treatment, storage or disposal of waste, shall not be perceivable beyond the boundaries of the Facility or areas not owned/controlled by the Discharger.

B. Groundwater Limitations

Discharge of wastewater from the Facility shall not cause groundwater to:

1. Exceed applicable WQOs;
2. Acquire taste, odor, toxicity, or color that create nuisance conditions;
3. Impair beneficial uses; or
4. Contain constituents or organisms in excess of applicable Title 22 MCLs (see, e.g., Title 22, § 64426.1 [bacteriological constituents], § 64431 [inorganics], § 64444 [organics], § 64678 [lead, copper]).

TWO-NINE HOSPITALITY, INC.

HOLIDAY INN EXPRESS 29 PALMS WASTEWATER TREATMENT AND DISPOSAL SYSTEMS

SAN BERNARDINO COUNTY

C. Discharge Specifications

1. All systems and equipment shall be operated to optimize discharge quality.
2. All conveyance, treatment, storage, and disposal systems shall be designed, constructed, operated, and maintained to prevent inundation or washout due to floods with a 100-year return frequency.
3. Public contact with wastewater at the Facility shall be prevented through such means as fences, signs, or acceptable alternatives.
4. Deodorizing chemicals and chemicals used for facility maintenance shall be stored in containers designed to prevent discharges to groundwater, surface water, or surface water drainage courses.
5. The discharge shall not cause degradation of any water supply.

D. Effluent Limitations

1. Treated wastewater from the Facility shall comply with the limitations specified in the table below, as determined at the designated point of discharge (except as otherwise provided below).

Table 5. Effluent Limitations.

Parameter	Units	Monthly Average Limitation	Determination
Primary WWTF	gpd	8,460	Calculated based for each calendar month.
Secondary WWTF	gpd	2,150	Calculated based for each calendar month.
BOD ₅	mg/L	30	--
TSS	mg/L	30	--

TWO-NINE HOSPITALITY, INC.

HOLIDAY INN EXPRESS 29 PALMS WASTEWATER TREATMENT AND DISPOSAL SYSTEMS

SAN BERNARDINO COUNTY

Parameter	Units	Monthly Average Limitation	Determination
TDS	mg/L	688	400 mg/L + 5-year Average Source Water TDS
pH	Std. Units	6.0 to 9.0	--

E. Subsurface Disposal System Specifications

1. Septic tanks shall be pumped when any one of the following conditions exists:
 - (a) The combined thickness of sludge and scum exceeds one-third of the tank depth of the first compartment.
 - (b) The scum layer is within 3 inches of the outlet device. The sludge layer is within 8 inches of the outlet device
2. The Discharger shall minimize discharges to the system from self-regenerating water softeners; acid and organic chemical solvent septic system additives; kitchen greases and oils; and toxic substances (including chemical pesticides and herbicides).
3. The Discharger shall prevent excessive use of in-sink garbage disposals; stormwater inflow from roof drains, etc.; and draining of swimming pools into the system.
4. The Discharger shall implement pretreatment and/or best management practices as needed to prevent subsurface disposal system failure, including the installation and maintenance of interceptor/collector devices to control and capture fats, oil and grease.
5. Oil/water separators and other pretreatment systems shall be operated and maintained to prevent carryover into the septic system.
6. The Discharger shall remove settled solids and scum from septic tank(s) whenever the solids clear space is less than three inches and/ or the scum clear space is less than eight inches.

TWO-NINE HOSPITALITY, INC.

HOLIDAY INN EXPRESS 29 PALMS WASTEWATER TREATMENT AND DISPOSAL SYSTEMS

SAN BERNARDINO COUNTY

7. The Discharger shall ensure that wastewater is evenly distributed to all of the disposal trenches and repair or modify the distribution system as necessary to optimize distribution.
8. Vegetation growing over subsurface disposal areas shall be cut and removed as needed to prevent root intrusion into drainage media.

F. Solids Disposal Requirements¹³

1. Sludge and Solid Waste shall be removed from screens, sumps, ponds, and clarifiers as needed to ensure optimal plant operation.
2. Onsite handling and storage of Residual Sludge, Solid Waste, and Biosolids shall be temporary (6 months or less); and controlled and contained in a manner that minimizes leachate formation and precludes infiltration of waste constituents into soils in a mass or concentration that will violate the Groundwater Limitations of this Order.
3. Residual sludge, biosolids, and solid waste shall be disposed of in a manner approved by the Executive Officer and consistent with California Code of Regulations, title 27, section 20005 et seq. Removal for further treatment, disposal, or reuse at disposal sites (i.e., landfills, WWTFs, composting sites, soil amendment sites) operated in accordance with valid waste discharge requirements issued by a Regional Water Board will satisfy this specification.
4. Use and disposal of biosolids shall comply with the self-implementing federal regulations of 40 Code of Federal Regulations part 503, which are subject to enforcement by the U.S. EPA, not the Colorado River Basin Water Board. If during the life of this Order, the State accepts primacy for

¹³ For the purposes of this section: “sludge” means the solid, semisolid, and liquid residues removed during primary, secondary, or advanced wastewater treatment processes; “solid waste” includes grit and screenings generated during preliminary treatment at the Facility; “residual sludge” means sludge that will not be subject to further treatment at the Facility; and “biosolids” refers to sludge that has been treated and tested and shown to be capable of being beneficially used as a soil amendment for agriculture, silviculture, horticulture, and land reclamation activities pursuant to federal and state regulations.

TWO-NINE HOSPITALITY, INC.

HOLIDAY INN EXPRESS 29 PALMS WASTEWATER TREATMENT AND DISPOSAL SYSTEMS

SAN BERNARDINO COUNTY

implementation of part 503, the Colorado River Basin Water Board may also initiate enforcement where appropriate.

5. Any proposed change in sludge use or disposal practice shall be reported in writing to the Executive Officer at least 90 days in advance of the change.

G. Monitoring Reporting and Notification Requirements

1. **Compliance with the Monitoring and Reporting Program.** The Discharger shall comply with the MRP or in the event of a subsequently issued Revised MRP, the provisions of that Revised MRP, which shall supersede the provisions of the operative MRP.
2. **Noncompliance Notifications.**
 - a. The Discharger shall report orally, any noncompliance that may endanger human health or the environment. The noncompliance shall be reported immediately within 24 hours to The Colorado River Basin Water Board, and the Office of Emergency Services (Cal OES) as soon as:
 - i. The Discharger has knowledge of the discharge,
 - ii. Notification is possible, and
 - iii. Notification will not substantially impede cleanup or other emergency measures.
 - b. If noncompliance occurs outside of business hours, the Discharger shall leave a message to the primary case manager identified on the GeoTracker website. The Discharger may additionally leave a message on The Colorado River Basin Water Board's office voicemail at (760) 346-7491. Cal OES may be reached at (916)-845-8510
 - c. A written report shall also be provided within five (5) business days of the time the discharger becomes aware of the incident. The written report shall contain a description of the noncompliance and its cause, the period of noncompliance, the anticipated time to achieve full compliance, and the steps taken or planned, to reduce,

TWO-NINE HOSPITALITY, INC.

HOLIDAY INN EXPRESS 29 PALMS WASTEWATER TREATMENT AND DISPOSAL SYSTEMS

SAN BERNARDINO COUNTY

eliminate, and prevent recurrence of the noncompliance. The discharger shall report all intentional or unintentional spills in excess of one thousand (1,000) gallons occurring within the facility or collection system to The Colorado River Basin Water Board office in accordance with the above time limits.

- d. The Discharger shall report all other instances of noncompliance with the Discharger's next scheduled SMR or earlier if requested by The Colorado River Basin Water Board's Executive Officer, or if required by an applicable standard for sludge use and disposal.
3. **Capacity Notification.** The Discharger shall provide a report to The Colorado River Basin Water Board when it determines that the plant's average dry-weather flow rate for any month exceeds 80 percent of the design disposal capacity. The report should indicate what steps, if any, the discharger intends to take to provide for the expected wastewater treatment capacity necessary when the plant reaches design capacity.
 4. **Supplemental Monitoring Activity.** The results of any monitoring activity conducted in addition to those activities already required under the MRP (or conducted on a more frequent basis) shall be reported in the next regularly submitted Self-Monitoring Report required under the MRP General Monitoring Requirements.
 5. **General Reporting Requirements.** The Discharger shall comply with the following General Reporting Requirements:
 - a. **Electronic Submittal.** All materials shall be submitted electronically via the [GeoTracker Database](https://geotracker.waterboards.ca.gov) (<https://geotracker.waterboards.ca.gov>).¹⁴ After uploading, Dischargers shall notify The Colorado River Basin Water Board staff via email to RB7_WDRs_paperless@waterboards.ca.gov, or another address specified by staff. The following information shall be included in the body of the email:

Attention:	Land Disposal Unit
Report Title:	[Report Title]

¹⁴ Large files must be split into appropriately labelled, manageable file sizes and uploaded into GeoTracker.

TWO-NINE HOSPITALITY, INC.

HOLIDAY INN EXPRESS 29 PALMS WASTEWATER TREATMENT AND DISPOSAL SYSTEMS

SAN BERNARDINO COUNTY

Upload ID: [Number]
Facility: Holiday Inn Express 29 Palms Wastewater Treatment and Disposal Systems
County: San Bernardino County
WDID: 7A361023001
GeoTracker ID: WDR100033831

- b. **Qualified Professionals.** All technical reports¹⁵ submitted under this Order shall be prepared by, or under the direct supervision of, a competent licensed civil engineer, engineering geologist, or other Qualified Professional. The submittal shall be signed and stamped (when applicable) by the Qualified Professional and contain a brief summary of the Qualified Professional's qualifications.
- c. **Data Presentation and Formatting.** In reporting monitoring data, the Discharger shall arrange data in tabular form so that the date, the constituents, the concentrations, and the units are readily discernible. Additionally, data shall be summarized in a manner that clearly illustrates compliance/noncompliance.
- d. **Non-Detections / Reporting Limits.** Unless reporting limits are specified in the same table, non-detections and sub-RL concentrations shall be reported as "< [limit]" (e.g., "< 5 µg/L").
- e. **Units.** Absent specific justification, all monitoring data shall be reported in the units specified herein.
- f. **Certification.**
- i. All submittals under this Order shall be accompanied by a transmittal containing the following certification that is signed by either the Required Signatory or their Authorized Representative:

I certify under penalty of law that I have personally examined and am familiar with the information submitted in this document and all attachments and that, based on my inquiry

¹⁵ A "technical report" is one incorporating the application of scientific or engineering principles.

TWO-NINE HOSPITALITY, INC.

HOLIDAY INN EXPRESS 29 PALMS WASTEWATER TREATMENT AND DISPOSAL SYSTEMS

SAN BERNARDINO COUNTY

of those individuals immediately responsible for obtaining the information, I believe that the information is true, accurate, and complete. I am aware that there are significant penalties for submitting false information, including the possibility of fine and imprisonment.

- ii. The Required Signatory shall be the individual identified in **Table 6** below. To act as an Authorized Representative for a Required Signatory (**Table 6**), an individual must be identified¹⁶ and duly authorized in writing by the Required Signatory; this written authorization shall be provided to the Board beforehand, or concurrently with the first submittal signed by the Authorized Representative.

Table 6. Required Signatories for Submittals.

Category of Discharger	Required Signatory
Corporations	Senior Vice President or Equivalent Principal Executive
Limited Liability Companies (LLCs)	Manager
General Partnerships and Limited Partnerships (LPs)	General Partner
Sole Proprietorships	Sole Proprietor
Public Agencies	Principal Executive or Ranking Elected/Appointed Official

¹⁶ This identification may be in reference to the Authorized Representative's title or position, provided it is one that customarily has the responsibility of supervising the Facility's overall operation (e.g., facility manager, superintendent).

TWO-NINE HOSPITALITY, INC.

HOLIDAY INN EXPRESS 29 PALMS WASTEWATER TREATMENT AND DISPOSAL
SYSTEMS

SAN BERNARDINO COUNTY

H. Other Provisions

1. Standby, power generating facilities shall be available to operate the plant during a commercial power failure.
2. Adequate measures shall be taken to assure that flood or surface drainage waters do not erode or otherwise render portions of the discharge facilities inoperable.
3. The Facility shall be supervised and operated by personnel possessing certification of appropriate grade per Title 23, section 3680 et seq.
4. The Discharger shall at all times properly operate and maintain all systems and components of collection, treatment and control, installed or used by the Discharger to achieve compliance with this Board Order. Proper operation and maintenance includes effective performance, adequate process controls, and appropriate quality assurance procedures. This provision requires the operation of backup or auxiliary facilities/systems when necessary to achieve compliance with this Board Order. All systems in service or reserved shall be inspected and maintained on a regular basis. Records of inspections and maintenance shall be retained and made available to The Colorado River Basin Water Board's Executive Officer on request.
5. **Facility Inspection.** Dischargers and their agents shall permit Board staff to inspect the Facility during business to verify compliance with WDRs. Failure to consent to a reasonable request for inspection constitutes a violation of this Order.
6. **Facility Operation and Maintenance.** The Discharger shall at all times properly operate and maintain all systems and components of collection, treatment, and control installed or used by the Discharger to achieve compliance with this Order. Proper operation and maintenance includes, but is not limited to, effective performance, adequate process controls, and appropriate quality assurance procedures. This provision requires the operation of backup or auxiliary facilities/systems when necessary to achieve compliance with this Order. All systems in service or reserved shall be inspected and maintained on a regular basis. Records of inspections and maintenance shall be retained and made available to the Colorado River Basin Water Board Staff on request.

TWO-NINE HOSPITALITY, INC.

HOLIDAY INN EXPRESS 29 PALMS WASTEWATER TREATMENT AND DISPOSAL
SYSTEMS

SAN BERNARDINO COUNTY

7. **Duty to Mitigate.** The Discharger shall take all reasonable steps to minimize or prevent any discharge in violation of this Order that has a reasonable likelihood of adversely affecting human health or the environment.
8. **Disposal Capacity.** The Discharger shall provide a report to the Colorado River Basin Water Board when it is determined that the Facility's average dry-weather flow rate for any month exceeds 80 percent of the design disposal capacity of 8,460 gpd for the primary WWTF and/or 6,470 gpd for the secondary WWTF. The report shall indicate what steps, if any, the Discharger intends to take to provide for the expected wastewater disposal capacity necessary when the plant reaches design capacity.
9. **Material Changes.** Prior to any modifications which would result in any material change in the quality or quantity of wastewater treated or discharged, or any material change in the location of discharge, the Discharger shall report all pertinent information in writing to the Colorado River Basin Water Board, and if required by the Colorado River Basin Water Board, obtain revised requirements before any modifications are implemented.
10. **Operational Personnel.** The Facility shall be supervised and operated by persons possessing the necessary expertise in the operation and maintenance of the wastewater treatment system.
11. **Onsite Physical Copies of Order.** Physical copies of this Order, as well as of the Monitoring and Reporting Program, shall be maintained onsite at the Facility, and shall be identified to all operating personnel; the Discharger shall ensure that such personnel are familiarized with these materials.
12. **Records Retention.** The Discharger shall retain copies of all reports required by this Order and the associated MRP. Records shall be maintained for a minimum of five years from the date of the sample, measurement, report, or application. Records may be maintained electronically. This period may be extended in writing by the Executive Officer.
13. **Changes in Ownership.** Prior to any change in ownership of this operation, the Discharger shall notify the Colorado River Basin Water Board Executive Officer in writing at least 30 days in advance. The notice shall include a written transfer agreement between the existing owner and

TWO-NINE HOSPITALITY, INC.

HOLIDAY INN EXPRESS 29 PALMS WASTEWATER TREATMENT AND DISPOSAL
SYSTEMS

SAN BERNARDINO COUNTY

the new owner. At a minimum, the transfer agreement shall contain a specific date for transfer of responsibility for compliance with this Order, and an acknowledgment that the new owner or operator is liable for compliance with this Order from the date of transfer. The Colorado River Basin Water Board may require modification or revocation and reissuance of this Order to formally substitute the permitted parties, and to incorporate other requirements as appropriate.

LIST OF ATTACHMENTS

Attachment A—Monitoring and Reporting Program

Attachment B—Maps and Facility Diagrams

ENFORCEMENT

If, in the opinion of the Executive Officer, the Dischargers fail to comply with the provisions of this Order, the Executive Officer may refer this matter to the Attorney General for judicial enforcement, may issue a complaint for administrative civil liability, or may take other enforcement actions. Failure to comply with this Order may result in the assessment of Administrative Civil Liability of up to \$10,000 per violation, per day, depending on the violation, pursuant to the Water Code, including sections 13268, 13350 and 13385. The Colorado River Basin Water Board reserves its right to take any enforcement actions authorized by law.

ADMINISTRATIVE REVIEW

Any person aggrieved by this Colorado River Basin Water Board action may petition the State Water Board for review in accordance with Water Code section 13320 and California Code of Regulations, title 23, section 2050 et seq. To be timely, the petition must be received by the State Water Board by 5:00 pm on the 30th day after the date of this Order; if the 30th day falls on a Saturday, Sunday or state holiday, the petition must be received by the State Water Board by 5:00 pm on the next business day. The law and regulations applicable to filing petitions are available on the [State Water Board website](http://www.waterboards.ca.gov/public_notices/petitions/water_quality) (http://www.waterboards.ca.gov/public_notices/petitions/water_quality). Copies will also be provided upon request.

TWO-NINE HOSPITALITY, INC.

HOLIDAY INN EXPRESS 29 PALMS WASTEWATER TREATMENT AND DISPOSAL
SYSTEMS

SAN BERNARDINO COUNTY

ATTACHMENT A—MONITORING AND REPORTING PROGRAM**A. General Requirements**

1. Testing and Analytical Methods. The collection, preservation and holding times of all samples shall be in accordance with United States Environmental Protection Agency (USEPA) approved procedures. All analyses shall be conducted in accordance with the latest edition of either the USEPA's Guidelines Establishing Test Procedures for Analysis of Pollutants Under the Clean Water Act (40 C.F.R. part 136) or Test Methods for Evaluating Solid Waste: Physical/Chemical Methods Compendium (SW-846), unless otherwise approved by the Colorado River Basin Water Board's Executive Officer.
2. Laboratory Certification. All analyses shall be conducted by a laboratory certified by the State Water Resources Control Board (State Water Board), Division of Drinking Water's Environmental Laboratory Accreditation Program (ELAP), unless otherwise approved by the Colorado River Basin Water Board's Executive Officer.
3. Reporting Levels. All analytical data shall be reported with method detection limits (MDLs) and with either the reporting level or limits of quantitation (LOQs) according to 40 Code of Federal Regulations part 136, Appendix B. The laboratory reporting limit for all reported monitoring data shall be no greater than the practical quantitation limit (PQL).
4. Sample Location(s). Samples shall be collected at the location specified in the WDRs. If no location is specified, sampling shall be conducted at the most representative sampling point available.
5. Representative Sampling. All samples shall be representative of the volume and nature of the discharge or matrix of material sampled. The time, date, and location of each grab sample shall be recorded on the chain of custody form for the sample. If composite samples are collected, the basis for sampling (time or flow weighted) shall be approved by staff.
6. Instrumentation and Calibration. All monitoring instruments and devices used by the discharger to fulfill the prescribed monitoring program shall be properly maintained and calibrated as necessary to ensure their continued accuracy. In the event that continuous monitoring equipment is out of service for a period greater than 24-hours, the Discharger shall obtain

TWO-NINE HOSPITALITY, INC.

HOLIDAY INN EXPRESS 29 PALMS WASTEWATER TREATMENT AND DISPOSAL SYSTEMS

SAN BERNARDINO COUNTY

ATTACHMENT A—MONITORING AND REPORTING PROGRAM

representative grab samples each day the equipment is out of service. The Discharger shall correct the cause(s) of failure of the continuous monitoring equipment as soon as practicable. The Discharger shall report the period(s) during which the equipment was out of service and if the problem has not been corrected, shall identify the steps which the Discharger is taking or proposes to take to bring the equipment back into service and the schedule for these actions.

7. Field Test Instruments. Field test instruments (such as those used to test pH, dissolved oxygen, and electrical conductivity) may be used provided:
 - a. The user is trained in proper use and maintenance of the instruments;
 - b. The instruments are field calibrated prior to monitoring events at the frequency recommended by the manufacturer;
 - c. Instruments are serviced and/or calibrated by the manufacturer at the recommended frequency; and
 - d. Field calibration reports are submitted
8. **Records Retention.** The Discharger shall comply with the following:
 - a. Samples and measurements taken for the purpose of monitoring shall be representative of the monitored activity.
 - b. The Discharger shall retain records of all monitoring information, copies of all reports required by this Board Order, and records of all data used to complete the application for this Board Order, for a period of at least 5 years from the date of the sample, measurement, report or application.
 - c. Records of monitoring information shall include:
 - i. The date, exact place, and time of sampling or measurements.
 - ii. The individual(s) who performed the sampling or measurements.
 - iii. The date(s) analyses were performed.

TWO-NINE HOSPITALITY, INC.

HOLIDAY INN EXPRESS 29 PALMS WASTEWATER TREATMENT AND DISPOSAL SYSTEMS

SAN BERNARDINO COUNTY

ATTACHMENT A—MONITORING AND REPORTING PROGRAM

- iv. The individual(s) who performed the analyses.
 - v. The analytical techniques or methods used; and
 - vi. The results of such analyses.
9. **Inoperative Facility.** If the facility is not in operation, or there is no discharge during a required reporting period, the Discharger shall forward a letter to The Colorado River Basin Water Board indicating that there has been no activity during the required reporting period.
10. **Averaging.** If only one sample is available for a given reporting period, compliance with monthly average, or weekly average Discharge Specifications, will be determined from that sample.

B. Monitoring Requirements

1. **Source Water Monitoring.** The Discharger shall monitor the Facility's source water in accordance with **MRP Table 1**.

MRP Table 1. Source Water Monitoring Schedule

Constituent	Units	Sample	Monitoring Freq.	Reporting Freq.
TDS	mg/L	Grab	Quarterly	Quarterly

2. **Primary & Secondary WWTF Influent.** The Facility's influent (i.e., wastewater prior to treatment) shall be monitored in accordance with **MRP Table 2**.

MRP Table 2. Influent Monitoring Schedule

Constituent	Units	Sample	Monitoring Freq.	Reporting Freq.
20°C BOD ₅	mg/L	Grab	Quarterly	Quarterly
TSS	mg/L	Grab	Quarterly	Quarterly

GeoTracker ID: WDR100033831

WDID: 7A361023001

TWO-NINE HOSPITALITY, INC.

HOLIDAY INN EXPRESS 29 PALMS WASTEWATER TREATMENT AND DISPOSAL SYSTEMS

SAN BERNARDINO COUNTY

ATTACHMENT A—MONITORING AND REPORTING PROGRAM

Constituent	Units	Sample	Monitoring Freq.	Reporting Freq.
Total Nitrogen	mg/L	Grab	Quarterly	Quarterly
Alkalinity ¹⁷	mg/L	Grab/Influent	Monthly	Monthly

3. **Primary WWTF Effluent.** The Facility's secondary treated effluent (i.e., treated wastewater discharged to the seepage pits) shall be monitored in accordance with **MRP Table 3**.

MRP Table 3. Primary WWTF Effluent Monitoring Schedule

Constituent	Units	Type	Monitoring Freq	Reporting Freq
Flow	GPD	Measurement	Monthly	Quarterly
20°C BOD ₅	mg/L	Grab	Quarterly	Quarterly
TSS	mg/L	Grab	Quarterly	Quarterly
pH	Std. Units	Grab	Quarterly	Quarterly
Dissolved Oxygen	mg/L	Grab	Quarterly	Quarterly
Total Nitrogen	mg/L	Grab	Quarterly	Quarterly
Nitrogen Removal	%	Calculation ¹⁸	Quarterly	Quarterly
TDS	mg/L	Grab	Quarterly	Quarterly

¹⁷ Alkalinity only needs to be monitored for the Primary WWTF.

¹⁸ Calculated by comparing the total nitrogen in influent with the total nitrogen in effluent.

TWO-NINE HOSPITALITY, INC.

HOLIDAY INN EXPRESS 29 PALMS WASTEWATER TREATMENT AND DISPOSAL SYSTEMS

SAN BERNARDINO COUNTY

ATTACHMENT A—MONITORING AND REPORTING PROGRAM

Constituent	Units	Type	Monitoring Freq	Reporting Freq
VOCs	µg/L	Grab	Annually	Annually

4. **Secondary WWTF Effluent.** The Facility's laundry effluent (i.e., treated wastewater discharged to the seepage pits from the septic tank) shall be monitored in accordance with **MRP Table 4.**

MRP Table 4. Secondary WWTF Effluent Monitoring Schedule.

Constituent	Units	Type of Sample	Monitoring Frequency	Reporting Frequency
Flow	GPD	Measurement	Quarterly ¹⁹	Quarterly
pH	Std. Units	Grab	Quarterly	Quarterly
TDS	mg/L	Grab	Quarterly	Quarterly
Total Nitrogen	mg/L	Grab	Quarterly	Quarterly
Nitrogen Removal	%	Calculation ²⁰	Quarterly	Quarterly
MBAS ²¹	mg/L	Grab	Quarterly	Quarterly
VOCs	mg/L	Grab	Annually	Annually
Effluent filter condition (if equipped, clean as needed)	N/A	N/A	Quarterly	Quarterly

¹⁹ Quarterly monitoring shall be sampled during March, June, September, and December.

²⁰ Calculated by comparing the total nitrogen in influent with the total nitrogen in effluent.

²¹ Methylene Blue Active Substances

TWO-NINE HOSPITALITY, INC.

HOLIDAY INN EXPRESS 29 PALMS WASTEWATER TREATMENT AND DISPOSAL SYSTEMS

SAN BERNARDINO COUNTY

ATTACHMENT A—MONITORING AND REPORTING PROGRAM

- 5. Septic Tank Monitoring.** The Facilities septic tanks shall be monitored as follows:
- a. Septic tanks shall be inspected and/or pumped at least as frequently as described in the table below. Inspections of sludge and scum depth are not required if the tanks are pumped at least annually.
 - b. If a septic tank is pumped during the year, the pumping report shall be submitted with the annual report. At a minimum, the record shall include the date, nature of service, service company name, and service company license number.

MRP Table 5. Septic Tank Monitoring Schedule.

Parameter	Units	Measurement	Monitoring Frequency	Reporting Frequency
Sludge depth and scum thickness in each compartment of each tank ²²	Feet	Staff Gauge	Quarterly	Quarterly
Distance between bottom of scum layer and bottom of outlet device	Inches	Staff Gauge	Quarterly	Quarterly
Distance between top of sludge layer and bottom of outlet device	Inches	Staff Gauge	Quarterly	Quarterly

²² See Attachment C for Sludge Depth and Scum Thickness measurements

TWO-NINE HOSPITALITY, INC.

HOLIDAY INN EXPRESS 29 PALMS WASTEWATER TREATMENT AND DISPOSAL
SYSTEMS

SAN BERNARDINO COUNTY

ATTACHMENT A—MONITORING AND REPORTING PROGRAM**C. Reporting Requirements**

1. **Quarterly Reporting.** The Discharger shall report the results of all monitoring required to be reported on a quarterly basis via Quarterly Self-Monitoring Reports (SMRs).
 - a. **Submittal Deadlines.** Quarterly SMRs shall be submitted on the following dates:
 - i. April 30 (Quarter 1 [Jan. 1 – Mar. 31]);
 - ii. July 31 (Quarter 2 [April 1 – June 30]);
 - iii. October 31 (Quarter 3 [July 1 – Sept. 30]); and
 - iv. January 31 (Quarter 4 [Oct. 1 – Dec. 31]).
 - b. **Required Contents.** Quarterly SMRs shall include the results of all monitoring activity within the subject quarter, and which is required to be reported on a quarterly basis, as well as the following:
 - i. Facility Map depicting sampling points.
 - ii. A discussion of any violations of the WDRs Order occurring during the subject quarter, completed and planned corrective actions.
2. **Annual Reporting.** In addition to the above information, the 4th Quarter SMR, which is due on January 31, shall contain the results of all monitoring that is required to be reported on an annual basis.

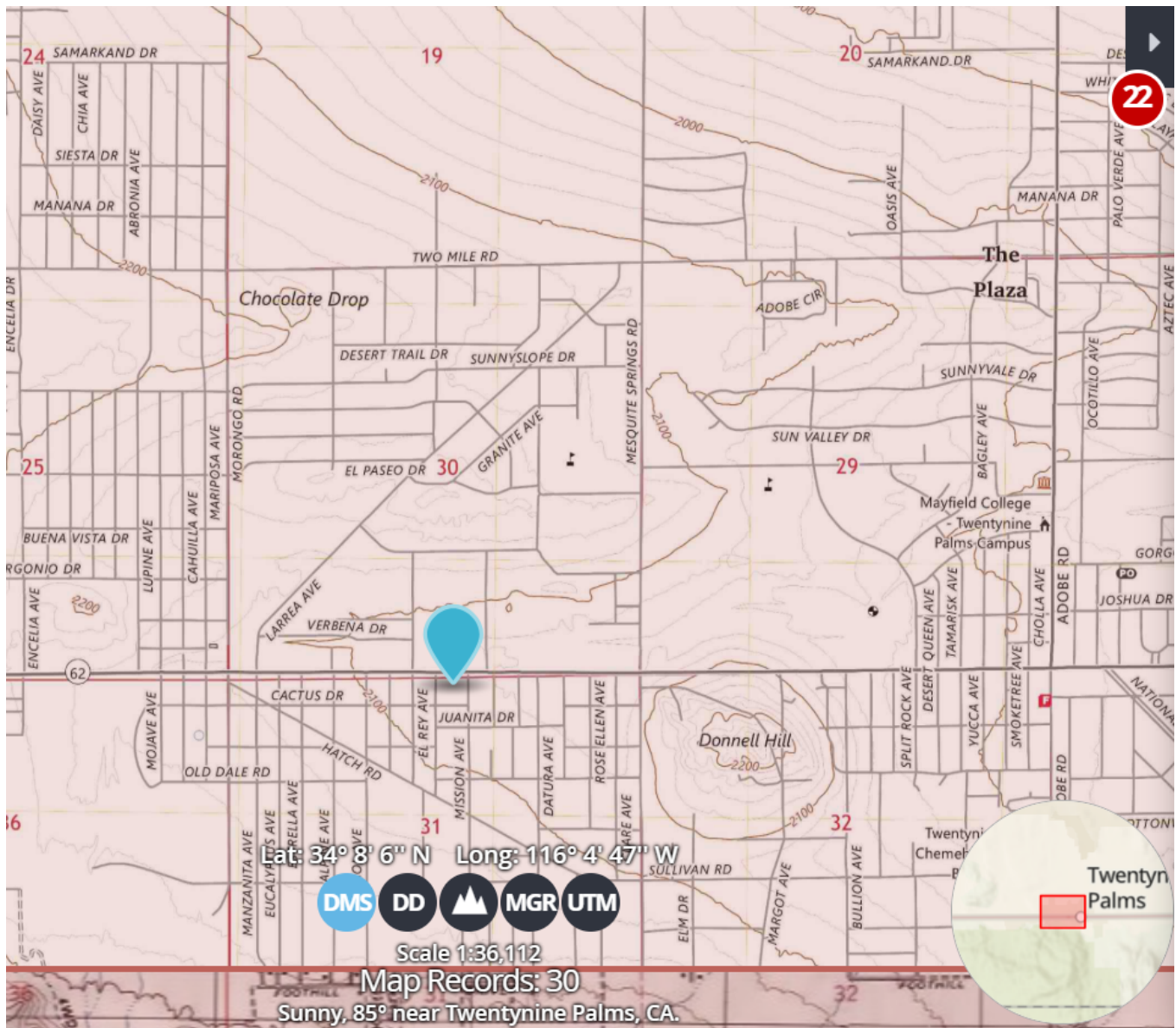
TWO-NINE HOSPITALITY, INC.

HOLIDAY INN EXPRESS 29 PALMS WASTEWATER TREATMENT AND DISPOSAL SYSTEMS

SAN BERNARDINO COUNTY

ATTACHMENT B—MAPS AND FACILITY DIAGRAMS

Figure 1. Facility Location.



Location of Wastewater Treatment Facilities and Discharges:
Section 31, T1N, R9E, SBB&M

TWO-NINE HOSPITALITY, INC.

HOLIDAY INN EXPRESS 29 PALMS WASTEWATER TREATMENT AND DISPOSAL SYSTEMS

SAN BERNARDINO COUNTY

ATTACHMENT B—MAPS AND FACILITY DIAGRAMS

Figure 2. Facility Layout.

HOLIDAY INN EXPRESS SEEPAGE PIT LOCATION MAP



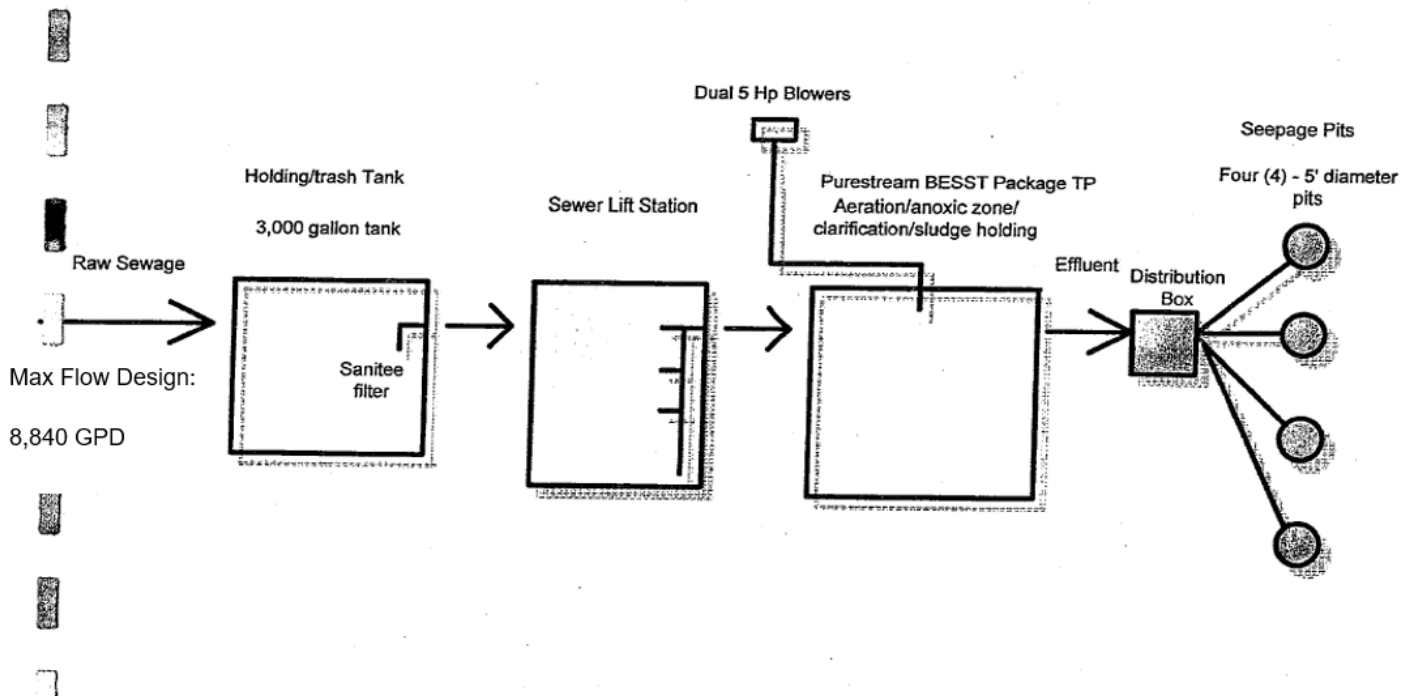
TWO-NINE HOSPITALITY, INC.

HOLIDAY INN EXPRESS 29 PALMS WASTEWATER TREATMENT AND DISPOSAL SYSTEMS

SAN BERNARDINO COUNTY

ATTACHMENT B—MAPS AND FACILITY DIAGRAMS

Figure 3. Process Flow Diagram WWTF.



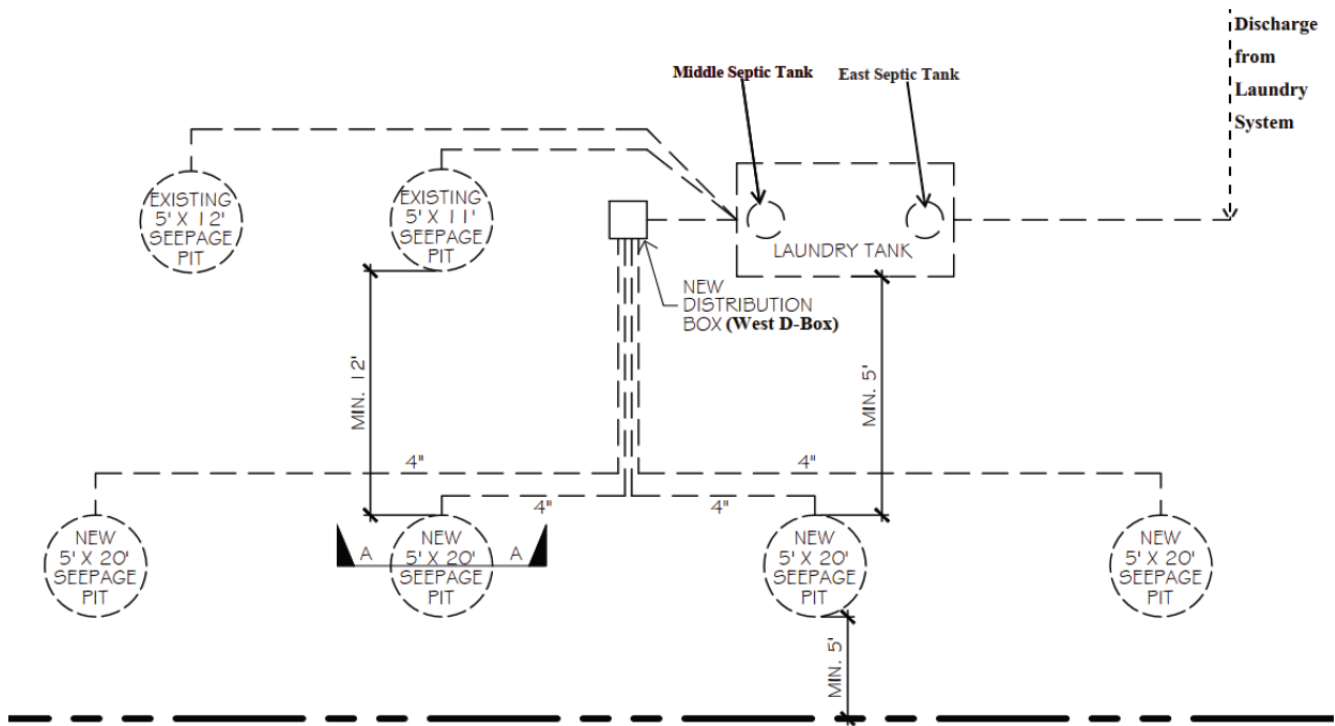
TWO-NINE HOSPITALITY, INC.

HOLIDAY INN EXPRESS 29 PALMS WASTEWATER TREATMENT AND DISPOSAL SYSTEMS

SAN BERNARDINO COUNTY

ATTACHMENT B—MAPS AND FACILITY DIAGRAMS

Figure 4. Process Flow Diagram Laundry system



TWO-NINE HOSPITALITY, INC.

HOLIDAY INN EXPRESS 29 PALMS WASTEWATER TREATMENT AND DISPOSAL SYSTEMS

SAN BERNARDINO COUNTY

ATTACHMENT C—TYPICAL SEPTIC TANK DIAGRAM

