



---

## Colorado River Basin Regional Water Quality Control Board

Certified Mail: **9589 0710 5270 2389 3928 89**

December 18, 2025

Eleftheria Chante, Vice President - Operations & Maintenance  
Avangrid Power, LLC  
2701 NW Vaughn Street, Suite 300  
Portland, OR 97210  
(503) 887-8208  
[Eleftheria.Chante@avangrid.com](mailto:Eleftheria.Chante@avangrid.com)

**SUBJECT: NOTICE OF APPLICABILITY FOR COVERAGE UNDER ORDER WQ 2004-0004-DWQ, STATEWIDE GENERAL WASTE DISCHARGE REQUIREMENTS FOR DREDGE OR FILL DISCHARGES TO WATERS DEEMED BY THE U.S. ARMY CORPS OF ENGINEERS TO BE OUTSIDE OF FEDERAL JURISDICTION, TULE CIVIL UPGRADE PROJECT, SAN DIEGO COUNTY, WDID NO. 7A373009001**

Dear Eleftheria Chante,

On October 22, 2025, Avangrid Power, LLC (Discharger) submitted a Notice of Intent (NOI) to enroll under and comply with State Water Resources Control Board (State Water Board) Order WQ 2004-0004-DWQ, *Statewide General Waste discharge Requirements for Dredge or Fill Discharges to Waters Deemed by the U.S. Army Corps of Engineers to Be Outside of Federal Jurisdiction* (General WDRs). The California Regional Water Quality Control Board, Colorado River Basin Region (Colorado River Basin Water Board) has reviewed the enrollment materials and finds that the dredge or fill discharges associated with the Tule Civil Upgrade (Project) meet the requirements for enrollment under the General WDRs. The Project is hereby enrolled under the General WDRs, and the Discharger may proceed with the Project in accordance therewith.

A copy of the General WDRs is attached to this Notice of Applicability (NOA) and can also be found on the [State Water Board's Adopted Orders webpage](https://www.waterboards.ca.gov/board_decisions/adopted_orders/water_quality/2004/wqo/wqo2004-0004.pdf) at: [https://www.waterboards.ca.gov/board\\_decisions/adopted\\_orders/water\\_quality/2004/wqo/wqo2004-0004.pdf](https://www.waterboards.ca.gov/board_decisions/adopted_orders/water_quality/2004/wqo/wqo2004-0004.pdf).

Please familiarize yourself with the requirements of the General WDRs. You are responsible for complying with all applicable requirements. Failure to comply with the General WDRs constitutes a violation of the California Water Code and may result in enforcement action or termination of enrollment.

---

VIVIAN PEREZ, CHAIR | MICHAEL PLACENCIA, EXECUTIVE OFFICER

## PROJECT DESCRIPTION, IMPACTS, AND MITIGATION

The Project includes repair, maintenance, and installation of erosion control measures and drainage infrastructure along existing access roads and wind turbine pads. Project features will include waterbars, fiber rolls, silt fences, temporary erosion control blankets, vegetated V-ditches, and riprap-lined channels. Project activities will include regrading, compacting, and replenishing gravel along access roads, installing and maintaining low water crossings and culverts, and excavating, forming, and lining roadside drainage channels and berms. Staging areas will be established in uplands on existing turbine pads and access roads outside Waters of the State.

The Project will result in 0.002 acres (71 linear feet) of temporary impacts (fill/excavation) to Waters of the State at the G-14 Pad site and the McCain Valley Road (MVR) 1, 2, and 3 sites due to regrading, installation of vegetation matting, and hydroseeding. The Project will result in 0.002 acres (51 linear feet) of permanent impacts (fill/excavation) to Waters of the State at the MVR - After Road A site due to installation of a concrete low water crossing and at the D Road site due to placement of new riprap.

Temporarily impacted areas will be restored to pre-Project conditions after construction is complete. No compensatory mitigation is required since the permanent and temporary impacts to jurisdictional Waters of the State associated with the Project will not change the functions or values of the waters.

## PROJECT LOCATION

The Project is collocated with the Tule Wind Project which is situated on 12,360 acres of Bureau of Land Management (BLM) administered land near the town of Boulevard in eastern San Diego County, California. The latitude and longitude of the Project site(s) are listed below in Table 1. Maps showing the Project locations and areas of impacted waters are found in Attachment A: Project Maps

**Table 1: Project Site Locations**

Site	Latitude	Longitude
MVR - After Road A	32.798406° N	116.337439° W
D Road	32.77815° N	116.298942° W
G-14 Pad	32.720903° N	116.275011° W
MVR 1	32.723558° N	116.262486° W
MVR 2	32.714508° N	116.258286° W
MVR 3	32.702714° N	116.258728° W

## **FEES RECEIVED**

An application fee of \$4,212 was received on October 23, 2025. The fee amount was determined as required by California Code of Regulations, title 23, sections 3833(b)(3) and 2200(a)(3) and was calculated as a Category E - Low Impact Discharges (fee code 87) with the dredge and fill fee calculator.

## **CALIFORNIA ENVIRONMENTAL QUALITY ACT (CEQA)**

The Project consists of repair and maintenance of existing facilities used to provide electric power and involves negligible or no expansion of existing or former use. The Colorado River Basin Water Board has determined that the Project is exempt from the procedural requirements of CEQA (Public Resources Code, § 21000 et seq.; Pub. Resources Code, § 21084; Cal. Code Regs., tit. 14, § 15300 et seq.) under a Class 1 categorical exemption for “Existing Facilities” (Cal. Code Regs., tit. 14, § 15301) and no exceptions to these exemptions apply (Cal. Code Regs., tit. 14, § 15300.2).

## **AVOIDANCE AND MINIMIZATION MEASURES**

The Discharger shall implement all measures identified in the NOI and supplemental materials to avoid and minimize adverse impacts to Waters of the State and comply with all applicable conditions in the General WDRs.

## **TERMINATION OF COVERAGE**

Upon completion of the Project, the Discharger shall submit a Notice of Termination (NOT) requesting to be un-enrolled from the General WDRs. The NOT form can be found in Attachment 2 of the General WDRs.

Avangrid Power, LLC  
Tule Civil Upgrade Project

WDID: 7A373009001  
Reg. Meas. ID: 463042  
Place ID: 903379

If you require further assistance, please contact Logan Raub, 401 Water Quality Certification Program Manager via phone at (760) 776-8966 or email at [Logan.Raub@waterboards.ca.gov](mailto:Logan.Raub@waterboards.ca.gov).

Sincerely,

*Original Signed By*

---

Michael Placencia, Executive Officer  
Colorado River Basin Regional Water Quality Control Board

Enclosures: 1) Attachment A Project Maps  
2) Attachment B State Water Board Order No. 2004-0004-DWQ

File: WDID: 7A373009001, RM: 463042, Place ID: 903379, Tule Civil Upgrade Project, Water Quality Order No. 2004-0004-DWQ

cc: [via email only] (w/ enclosure):

Matthew Stelmach, Senior Permit Compliance Manager  
Avangrid Power, LLC  
[Matthew.Stelmach@avangrid.com](mailto:Matthew.Stelmach@avangrid.com)

Mary Ngo, Senior Environmental Scientist (Specialist)  
California Department of Fish and Wildlife, South Coast Region  
[Mary.Ngo@wildlife.ca.gov](mailto:Mary.Ngo@wildlife.ca.gov)

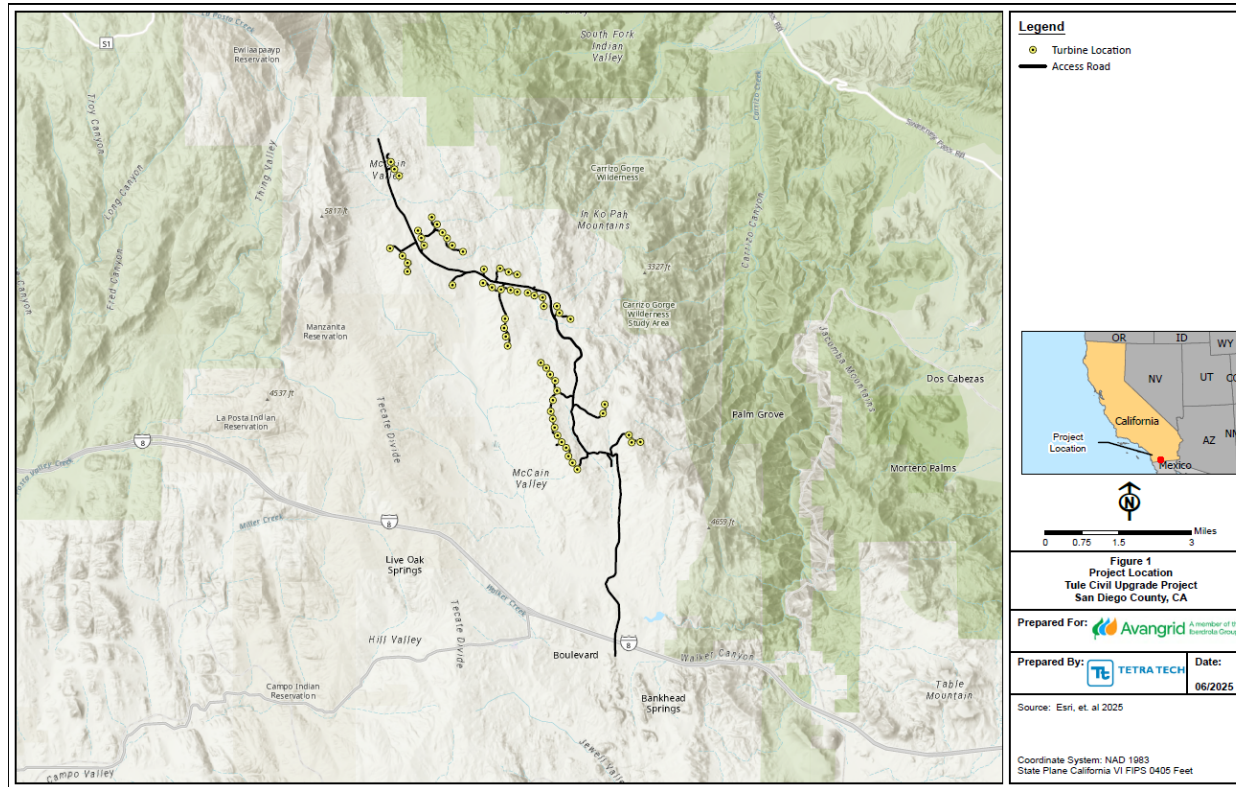
U.S. Fish and Wildlife Service, Carlsbad Fish and Wildlife Office  
[Jesse Bennett@fws.gov](mailto:Jesse_Bennett@fws.gov)

U.S. Fish and Wildlife Service, Carlsbad Fish and Wildlife Office  
[Eric Porter@fws.gov](mailto:Eric_Porter@fws.gov)

Phil Crader, Deputy Director  
Division of Water Quality  
State Water Resources Control Board  
[Phillip.Crader@waterboards.ca.gov](mailto:Phillip.Crader@waterboards.ca.gov)

CWA Section 401 WQC Program  
Division of Water Quality  
State Water Resources Control Board  
[Stateboard401.Stateboard401@waterboards.ca.gov](mailto:Stateboard401.Stateboard401@waterboards.ca.gov)

**Attachment A  
Project Maps**



**Figure 1.** Map showing the Project location including existing wind turbines and access roads. <sup>1</sup>

<sup>1</sup> Figures and photos submitted with the Notice of Intent (NOI) Form and supplemental materials for the Tule Civil Upgrade Project received by Colorado River Basin Regional Water Quality Control Board on October 22, 2025.



**Figure 2.** Jurisdictional features and Project impacts at the McCain Valley Road (MVR) - After Road A site.

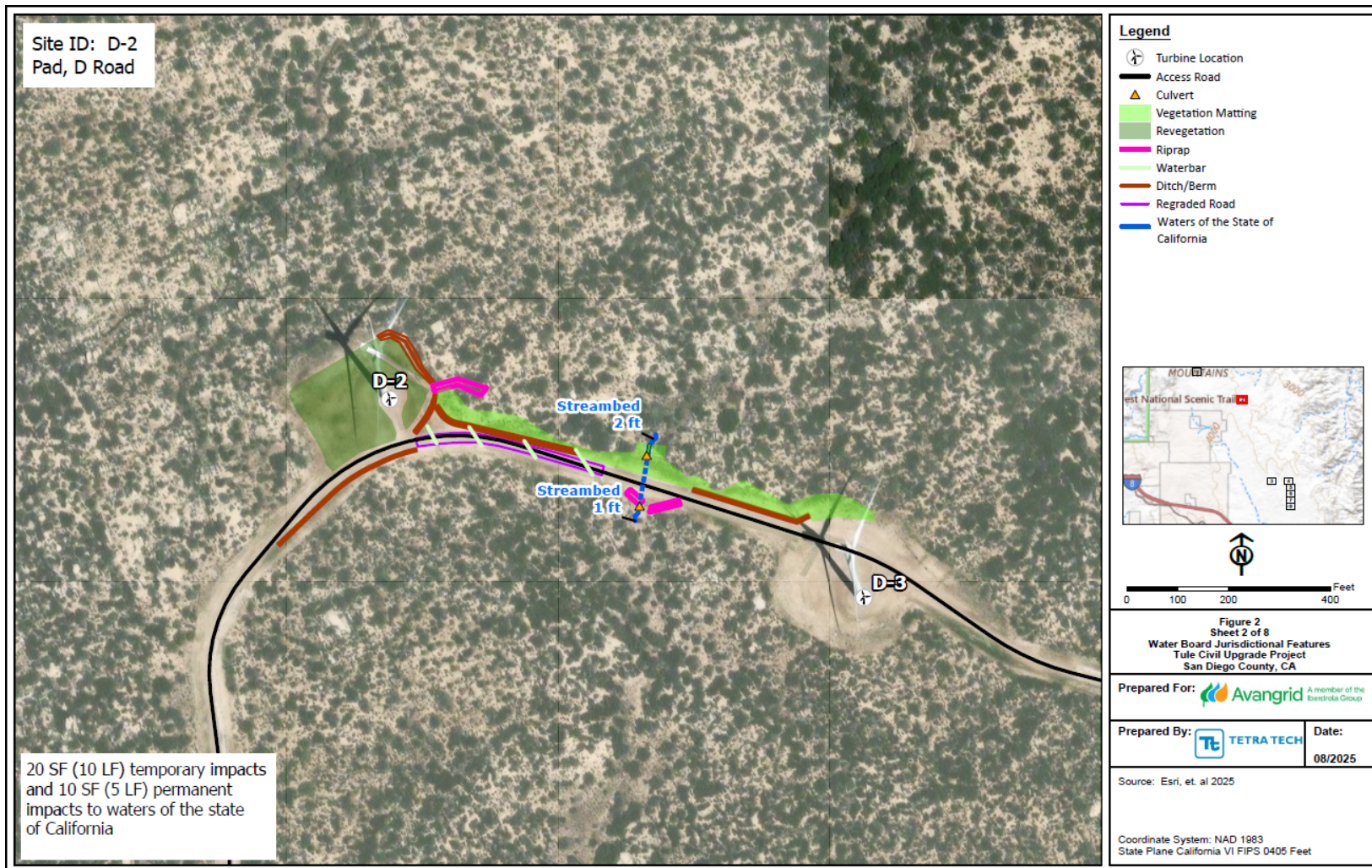
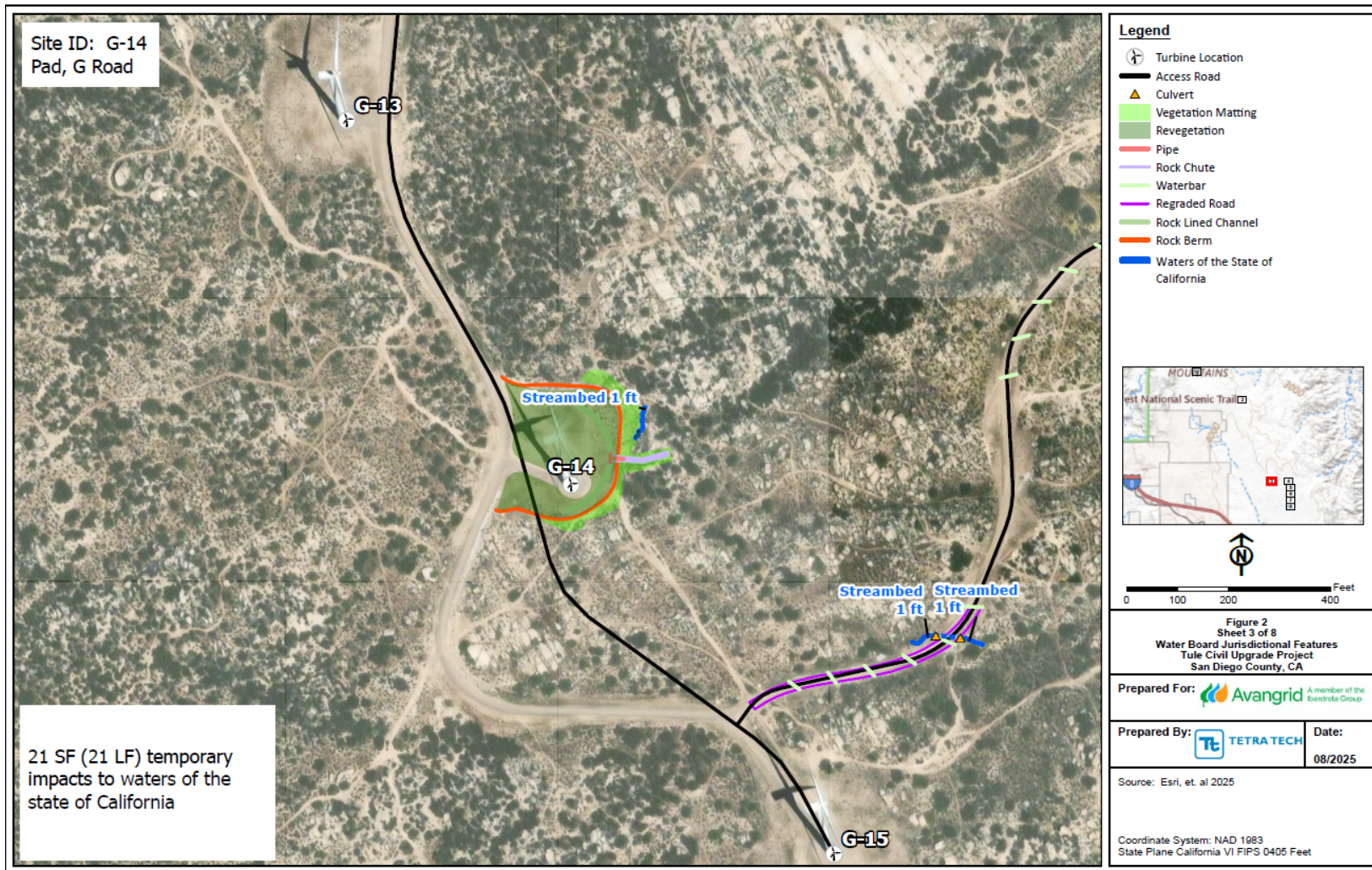


Figure 3. Jurisdictional features and Project impacts at the D Road site.



**Figure 4.** Jurisdictional features and Project impacts at the G-14 Pad site.

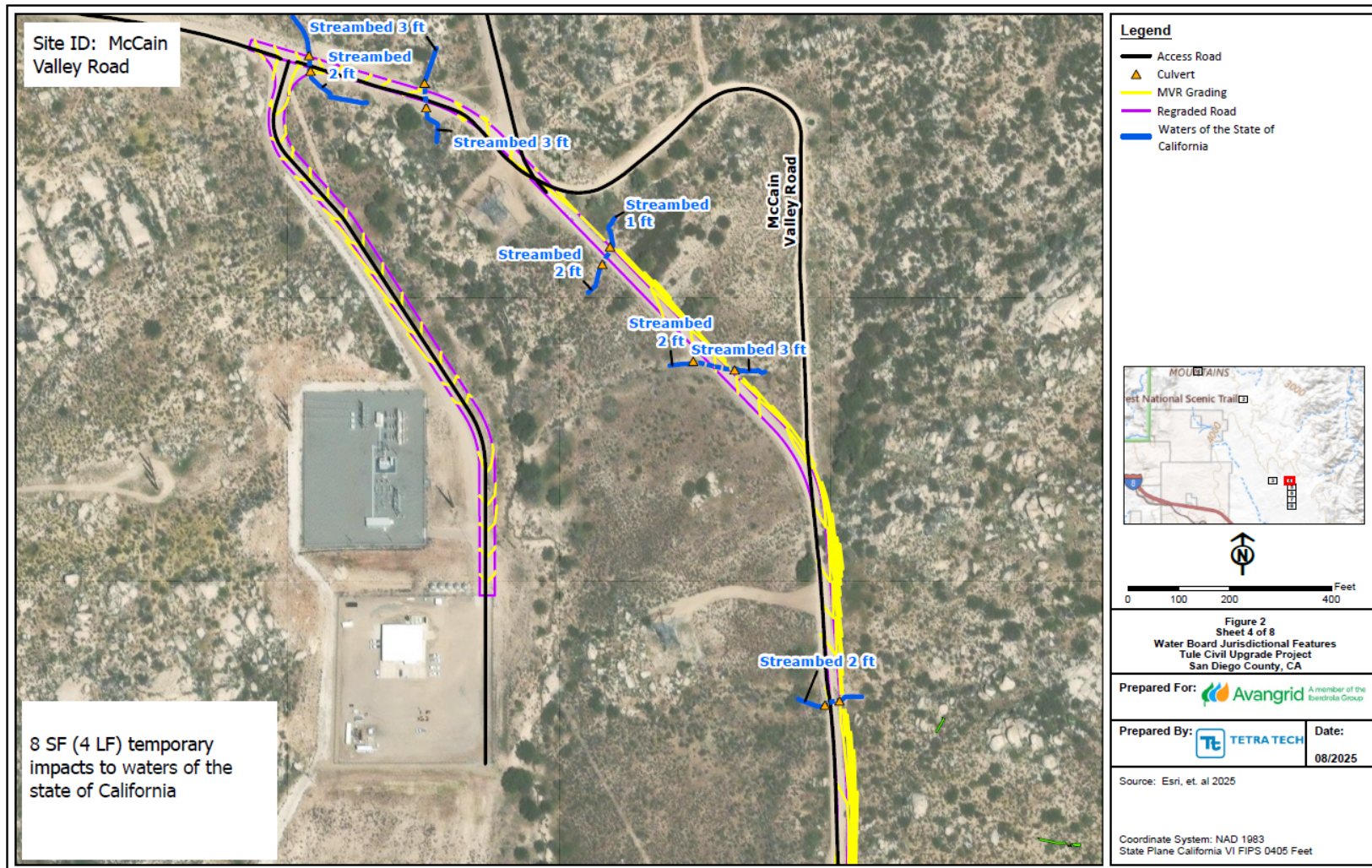
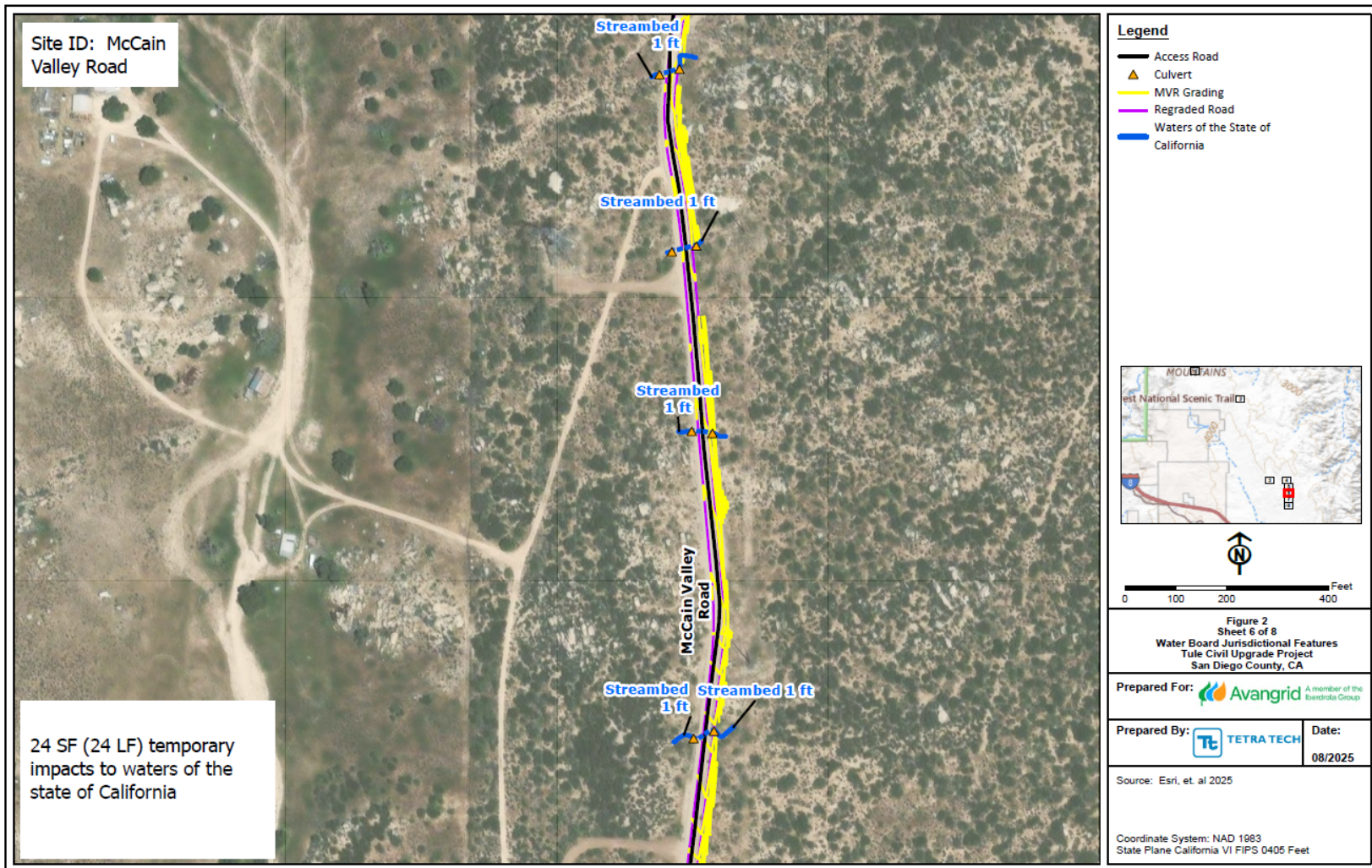
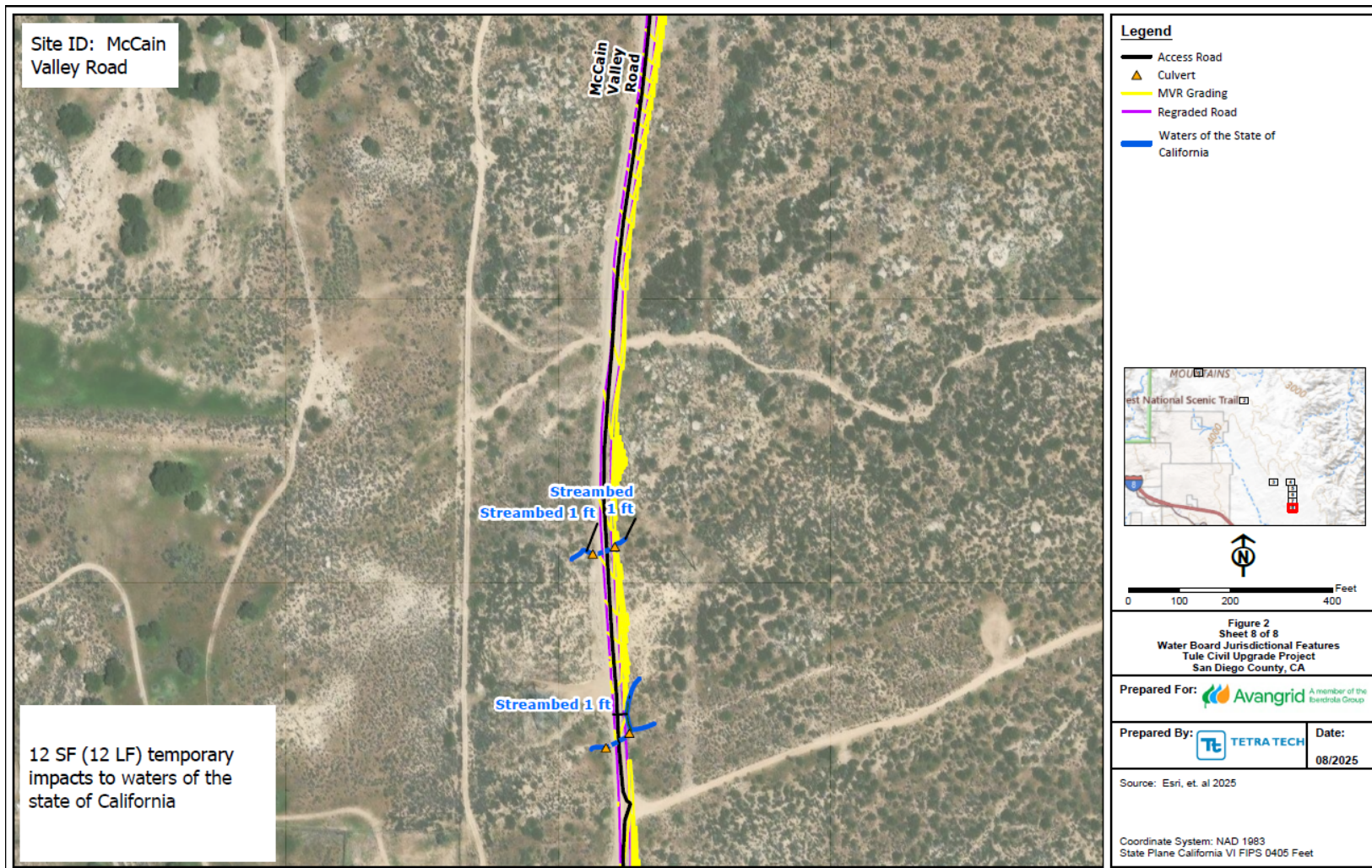


Figure 5. Jurisdictional features and Project impacts at the McCain Valley Road (MVR) 1 site.



**Figure 6.** Jurisdictional features and Project impacts at the McCain Valley Road (MVR) 2 site.



**Figure 7.** Jurisdictional features and Project impacts at the McCain Valley Road (MVR) 3 site.

**Attachment B**  
**State Water Board Order No. 2004-0004-DWQ**

---

A copy of [State Water Board Water Quality Order No. 2004-0004-DWQ](https://www.waterboards.ca.gov/board_decisions/adopted_orders/water_quality/2004/wqo/wqo2004-0004.pdf) ([https://www.waterboards.ca.gov/board\\_decisions/adopted\\_orders/water\\_quality/2004/wqo/wqo2004-0004.pdf](https://www.waterboards.ca.gov/board_decisions/adopted_orders/water_quality/2004/wqo/wqo2004-0004.pdf)) is included with this notice and can also be found on the [State Water Resources Control Board's General Orders webpage](https://www.waterboards.ca.gov/water_issues/programs/cwa401/generalorders.html) ([https://www.waterboards.ca.gov/water\\_issues/programs/cwa401/generalorders.html](https://www.waterboards.ca.gov/water_issues/programs/cwa401/generalorders.html)).