

Comments on Fish Consumption Study

Mark Russell

April 12, 2017

Principal Concerns

- Most important data is missing and therefore unable to confirm the calculations
- Report discussion of survey locations does not match data file
- Multiple data sets used and not labeled leading to inconsistency and possible misinterpretation

Most Important Data Missing

Description of Metadata

Column	Header	Description
I	CompleteSurvey	Would you be willing to complete a survey right now?
J	HowOftenFishHere	On average how many times a week do you come here to fish?
K	FishTimeOfYear	Which Time of year are you most likely to be fishing here?
Separate File	FishCaughtThisWeek	What are the types of fish that you have caught this week in San Diego Bay?
Missing	SizePortionYouEat	Of the fish you catch and eat, from San Diego Bay, what size portion do you typically eat?
L	HowDoYouPrepare	How do you typically prepare this fish?
Missing	PortionFish	Portion of fish that is eaten - Filet or Whole Fish
M - P	CommonLanguage	What is the most common language spoken in your home?
Separate File	CommonFishCatch	Which are common types of fish that you catch when you are fishing in San Diego Bay?
Q	WhoElseEats	Who else eats the fish that you catch?
R	HowManyChildrenEat	How many children eat the fish that you catch?
S	HowManyMealsWeek	How many meals a week do you/yourfamily eat fish that you caught from here?

Actual Row Headers

	I	J	K	L	M	N	O	P	Q	R	S
1	Complete Survey	HowOften FishHere	FishTime OfYear	HowDoYo uPrepare	CommonL nguageCod e	language	language	clanguage broad	WhoElseE ats	HowManyC hildrenEat	MealsWee k

Consumption Rates Impossible to Verify

Table 6. Descriptive statistics for Consumption Rates (grams/day).

Statistic	All Anglers (San Diego Bay)	Asians	Older Than 60 years	Children Eat
Mean (Standard Deviation)	6.3 (18.14)			
Minimum Value	0.0			
Maximum Value	212.6			
Geometric Mean	1.5			
Median (50th Percentile)	0.0			
75th Percentile	5.7			
90th				
95th				
99th				
N				

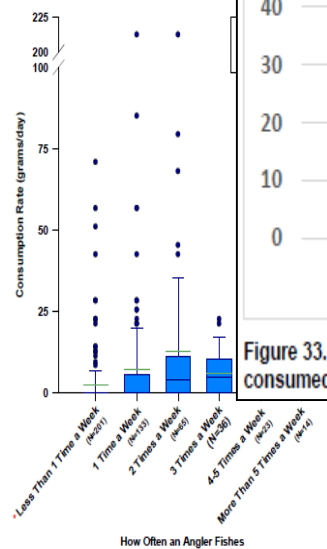


Figure 20. Consumption rate (grams/day) by how often an angler fishes per week. Less Than 1 Time a Week was significantly different ($p < 0.001$) from the rest (red asterisk). The box boundaries indicate the 25th and 75th percentiles, the blue line within the box the median and the green line the mean. Whiskers (error bars) above and below the box indicate the 90th and 10th percentiles.

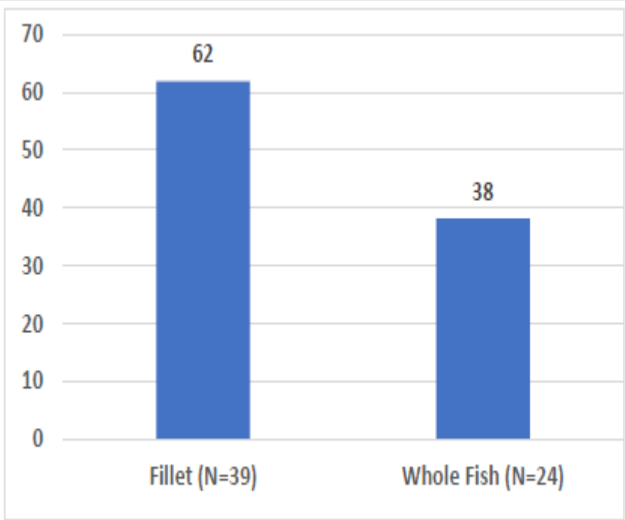


Figure 33. Percent of anglers who shared fish with children who indicated the portion they consumed. Assumed children ate the same portion as angler.

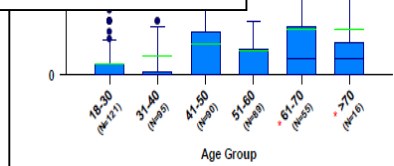
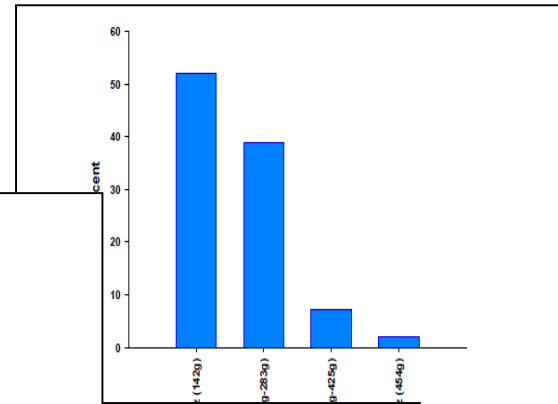


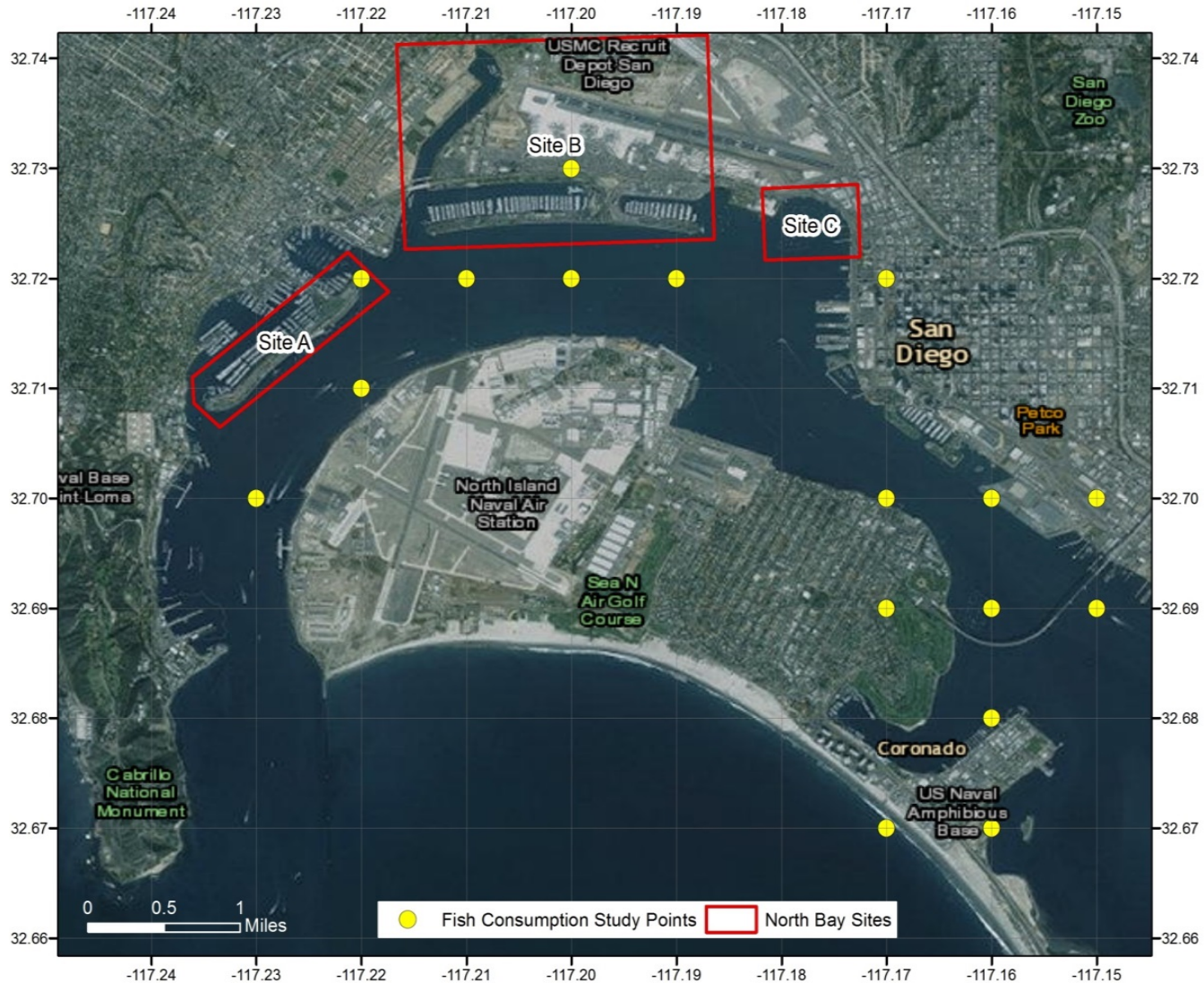
Figure 21. Differences in median and mean values for age group versus consumption rates. Age groups 61-70 and >70 were significantly different ($p < 0.001$) from the rest (red asterisks). The box boundaries indicate the 25th and 75th percentiles, the blue line within the box the median and the green line the mean. Whiskers (error bars) above and below the box indicate the 90th and 10th percentiles.

categories. Approximately 142 g) or less. Less than

Location Issues

surveyid	TypeofAngler	EatFish	HowManyMealsWeek	status	bayregion	CoordinateStatus	latitude	longitude	location
292	Shoreline Angler	No	Zero meals	complete	North	good	32.72	-117.19	Harbor Island
290	Shoreline Angler	No	Zero meals	complete	North	good	32.72	-117.19	Harbor Island
291	Shoreline Angler	No	Zero meals	complete	North	good	32.72	-117.19	Harbor Island
426	Shoreline Angler	Yes	Zero meals	complete	North	good	32.72	-117.19	Harbor Island
827	Shoreline Angler	No	Zero meals	complete	North	good	32.72	-117.19	Harbor Island
830	Shoreline Angler	No	Zero meals	complete	North	good	32.72	-117.19	Harbor Island
938	Shoreline Angler	No	Zero meals	complete	North	good	32.72	-117.19	Harbor Island
939	Shoreline Angler	Yes	1 meal a week	complete	North	good	32.72	-117.19	Harbor Island
940	Shoreline Angler	Yes	Zero meals	complete	North	estimated	32.72	-117.19	Harbor Island
1360	Shoreline Angler	Yes	Zero meals	complete	North	good	32.72	-117.19	Harbor Island
1655	Shoreline Angler	Yes	Zero meals	complete	North	good	32.72	-117.19	Harbor Island
828	Shoreline Angler	Yes	1 meal a week	complete	North	good	32.72	-117.19	Harbor Island
293	Shoreline Angler	Yes	Zero meals	survey mail	North	good	32.72	-117.19	Harbor Island
829	Shoreline Angler	No		refused	North	good	32.72	-117.19	Harbor Island
288	Shoreline Angler	No	Zero meals	complete	North	estimated	32.72	-117.17	Harbor Drive
289	Shoreline Angler	Yes	Zero meals	complete	North	good	32.72	-117.17	Harbor Drive
1530	Pier Angler			surveyed before	North	estimated	32.69	-117.17	Mid Bay Site B - Coronado Tidelands Park
385	Shoreline Angler	Yes	Zero meals	complete	North	estimated	32.64	-117.11	South Bay Site A - Pepper Park
602	Boat Angler	No	Zero meals	complete	North	estimated	32.64	-117.11	South Bay Site A - Pepper Park
1703	Pier Angler	No	Zero meals	complete	North	estimated	32.64	-117.11	South Bay Site A - Pepper Park

Survey Locations



Inconsistent Datasets

- The study identifies a few relevant numbers:
 - 1549: Number of anglers approached
 - 1086: Number of surveys completed
 - 44: Number of repeat surveys
 - 1042: Number of surveys completed, minus repeats (to avoid avidity bias)
 - 477: Number of anglers who eat fish

Inconsistent Datasets

Table/Figure	N	Issues
Figures 12-13, 15 – All Anglers	1,044	If meant to capture non-repeat responses, N=1,042
Figure 16 – All Anglers	1,017	11 respondents refused to give age, so N=1,031
Figure 19, 25, 26 – Consuming Anglers (?)	--	No sample size listed – 1,086, 1042, 477?
Table 7 – Mode of Transportation	472	Why not 1,042?
Figure 27 – Percent of fish reported as caught by anglers	1,111	Only 1,086 completed surveys

Recommendation: always define N, and try to use a consistent N