

California Regional Water Quality Control Board  
Santa Ana Region

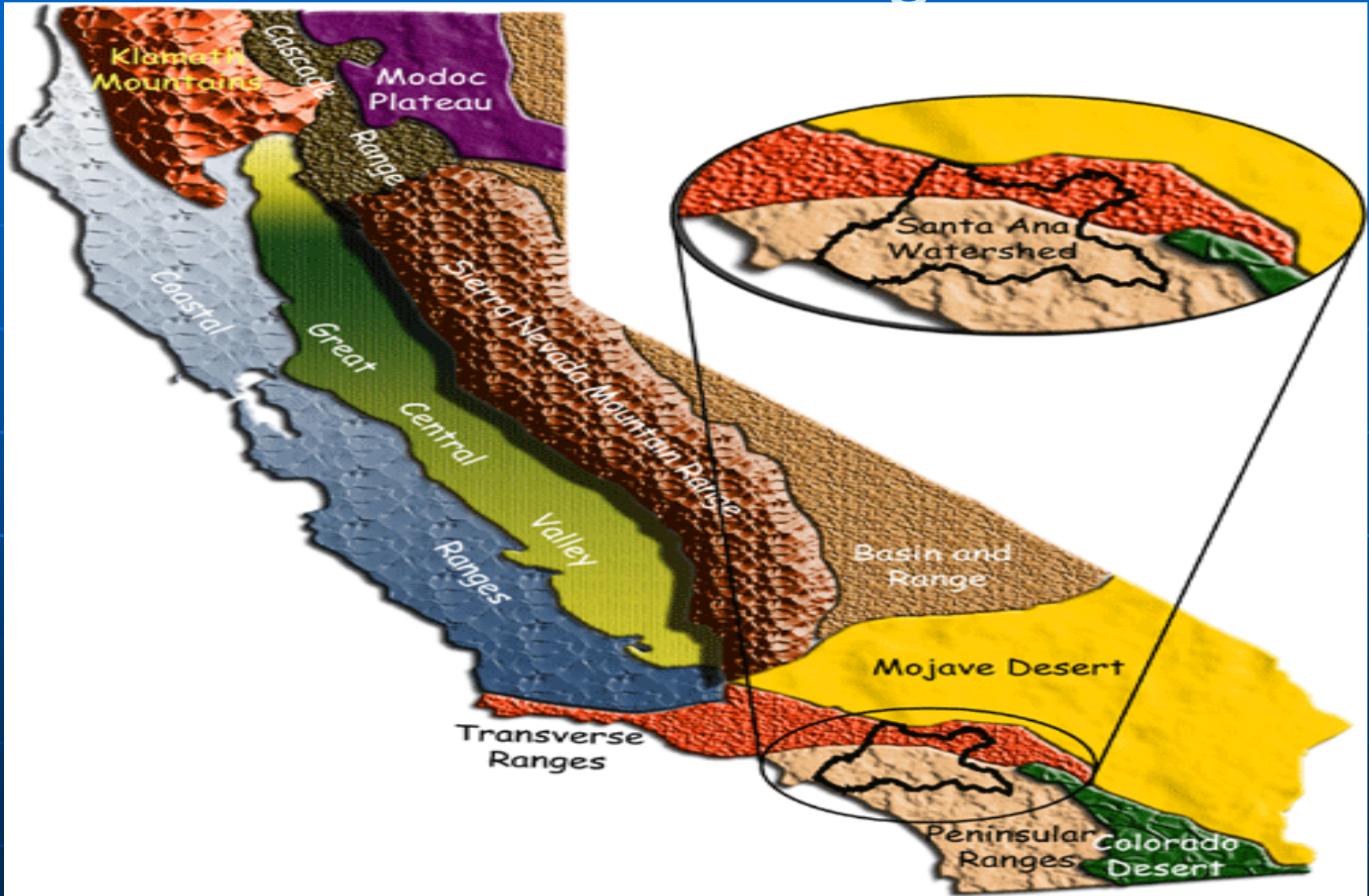


**Current Agricultural Regulations &  
Proposed Conditional Waiver for Ag  
Dischargers (CWAD) in the Santa Ana  
Region**

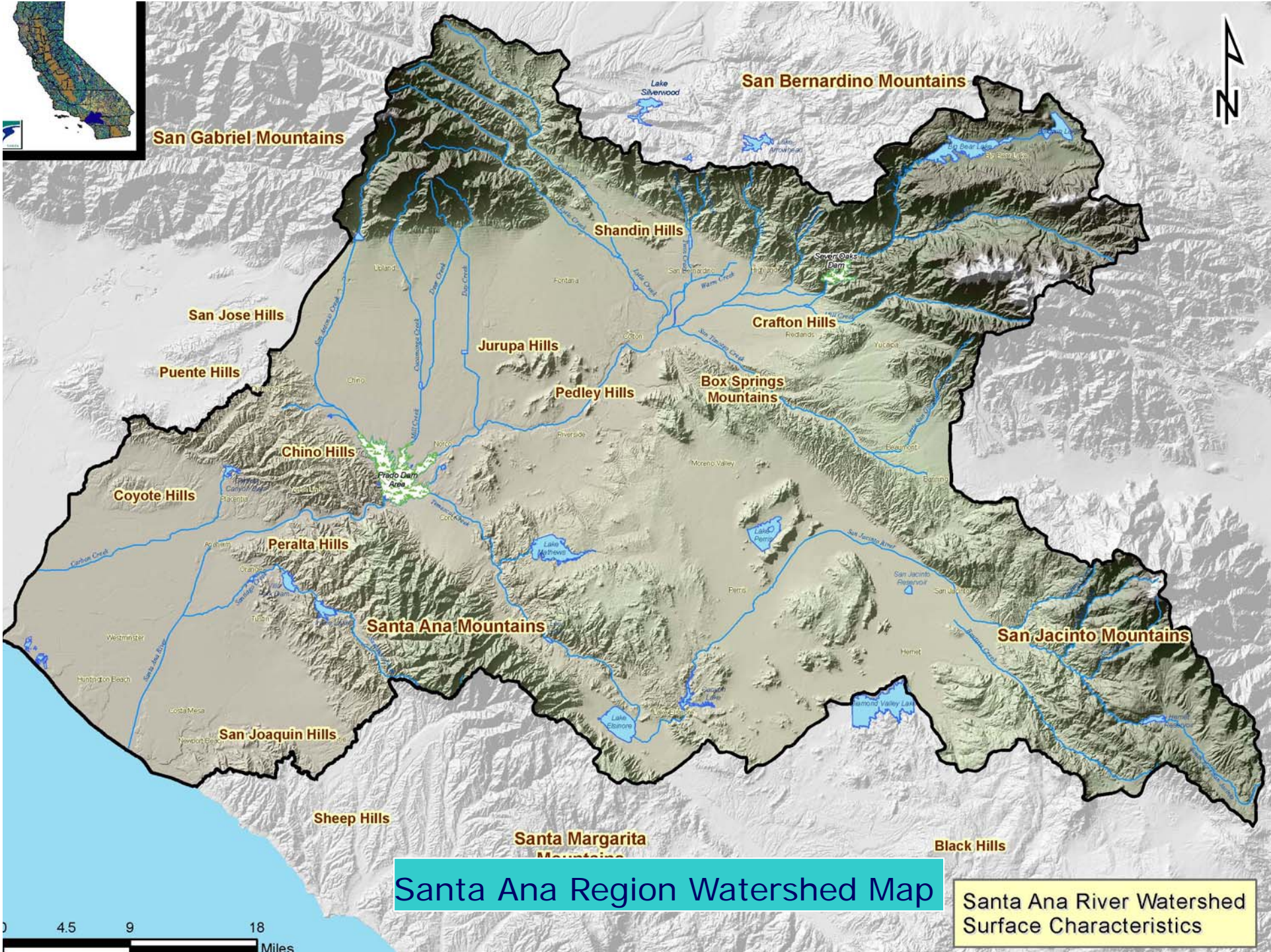
**Mark G. Adelson, Chief  
Regional Planning Programs**



# RB CWAD Program







**Santa Ana Region Watershed Map**

Santa Ana River Watershed  
Surface Characteristics

# Regulatory Programs

- NPDES Permits-for discharges to surface waters
  - General NPDES for Concentrated Animal Feeding Operations (dairies & related facilities)-adopted 9/07
- Waste Discharge Requirements (WDRs)-for discharges to waters of the state
  - Conditional Waivers of WDRs





# CWAD - Related Programs & Policies

- Basin Plan – water quality standards
- Total Maximum Daily Load (TMDL)
  - A Watershed Management Plan
  - Water Quality Monitoring
  - Implementation
- Plan for California's Non-Point Source (NPS) Pollution Control Program
- SWRCB NPS Implementation & Enforcement (I&E) Policy

# SARWQCB's Conditional Waiver (of WDR) for Agricultural Discharges (CWAD) Program

- California Water Code authorizes RWQCBs to regulate waste discharges by conditionally waiving WDRs
- Reduce pollutant loads in ag. discharges to meets WQ standards and/or TMDLs
- Monitor water quality effects from irrigated & non-irrigated ag. facilities
- Mitigate water quality impacts of ag. runoff
- Phased implementation

# Objectives of CWAD Program

- Consistent regulation of waste discharges from ag. operations
- Steps to implement program:
  - Identify stakeholders & potential coalition partnerships
  - Identifying & enrolling dischargers
  - Data collection & analysis
  - Implement BMPs
  - Monitoring & reporting
  - Establish and collect fees
  - Others???

# CWAD Program

- Program Implementation:
  - Enroll discharges
  - Comply with conditions
  - Pay applicable SWRCB fees
  - Monitoring & reporting - individual
  - Monitoring & reporting - group (group management fees)
  - Operate & maintain BMPs
- Meet program individually and/or thru stakeholders group(s)
- Operators who do not enroll in CWAD program will be required to apply for individual WDRs



# CWAD Strategy

- Phased implementation throughout SARWQCB
- Enroll Targeted Dischargers: Irrigated & Non-Irrigated (dry farming) Ag. Operations
- Allow operators to continue discharging wastes to the waters of the state while taking steps to comply with NPS Program, NPS I&E Policy, Basin Plan & TMDLs
- Implement BMPs to reduce NPS pollutant loads

# CWAD Strategy

- Effectively integrate TMDL requirements & SWRCB's NPS Plan and NPS I&E Policy
- Phase II & III-Upper & Lower Santa Ana River Watersheds
- Make CWAD program more attractive than individual WDR

# CWAD Phase I: Lake Elsinore / San Jacinto Watershed

- Canyon Lake & Lake Elsinore are impaired – on 303(d) List of water quality-limited segments
- Discharges from various sources are contributing to impairments / water pollution
- Nutrients, pathogens, & toxicity are the main pollutants of concern in this watershed

# San Jacinto: Nutrient TMDL Issues

## Excessive nutrient input at Lake Elsinore

Algal Blooms - mostly blue-green

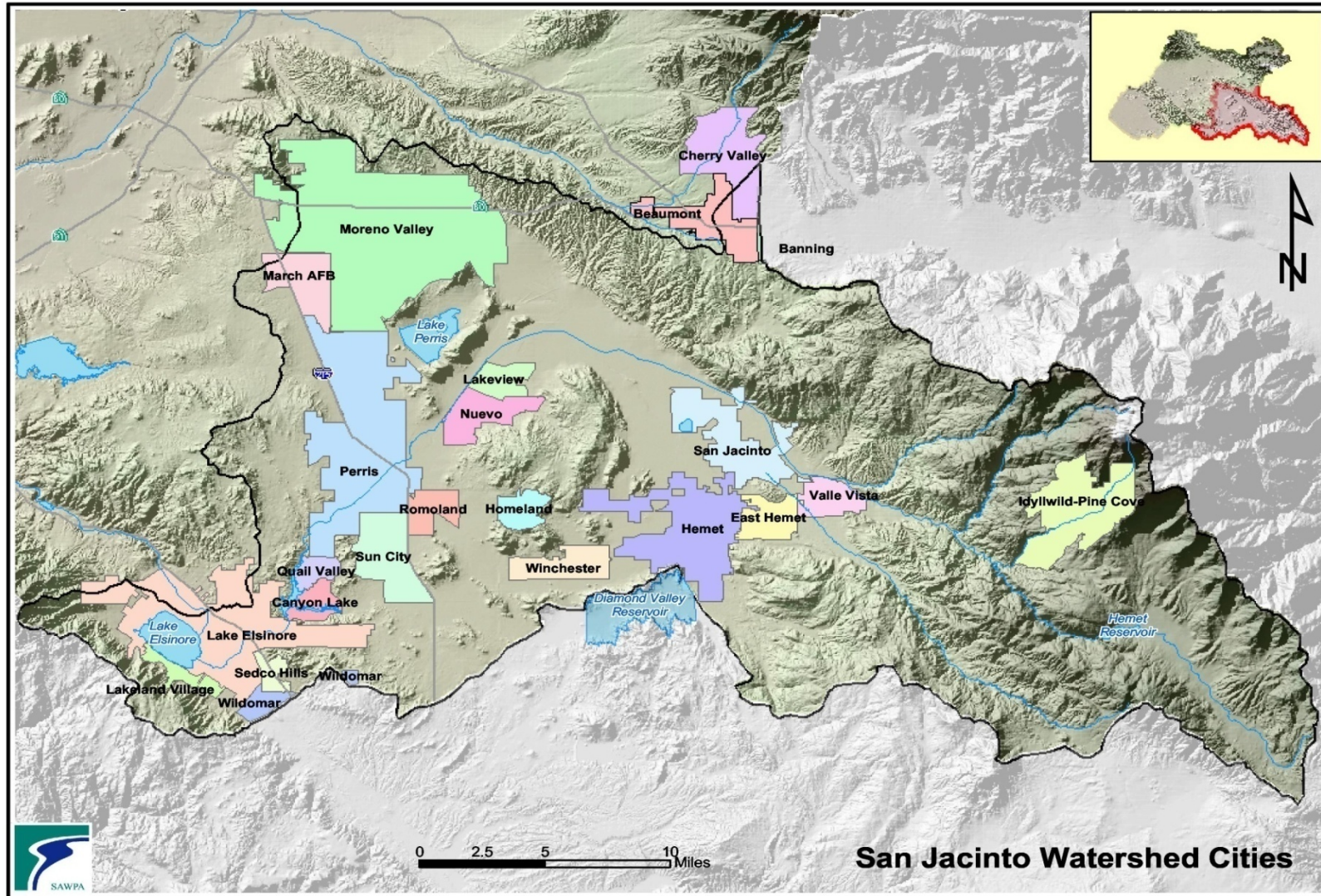
Depressed Oxygen Levels

Fish Kills





# Lake Elsinore/San Jacinto Watershed



# Canyon Lake / Lake Elsinore WQ Challenges

- Nutrient TMDLs adopted by RWQCB in 2006 for Canyon Lake & Lake Elsinore
  - Loads established for Phosphorus and Nitrogen
- TMDLs are now part of the Basin Plan
- TMDLs are watershed management plans for restoring water quality
- Obtain full stakeholder participation in tasks required to implement TMDLs

# CWAD Program – Implementing Phase I

- Enroll by filing a NOI (notice of intent)
- Participate in Canyon Lake & Lake Elsinore TMDL implementation tasks
- Comply individually, or join a Monitoring Group / Coalition
- Who will be required to participate:
  - Irrigated or dry-land farming
  - Livestock operations not covered by CAFO permit
  - Not covered under other SARWQCB permit
  - Commercial ag. operation. i.e, gross income \$1,000/Yr. + ????
  - Acreage threshold: 20 acres???
  - Exception criteria: risk / threat to water quality, inactive / abandoned facility, etc.

# Current Status of the Phase I CWAD Program

- CWAD Fact Sheet
- State Board/RBs/Inter-agency Coordination
- Coordination/w TMDL program
- Program outreach & development
- Identification of potential stakeholders & monitoring groups
- Coordination w/ local watershed group



# CWAD Program Status

- Potential stakeholders:
  - Western Riverside County Ag. Coalition
  - San Jacinto River Watershed Council
  - TMDL Task Force
  - Riverside County Ag. Commissioner
  - Riverside County Farm Bureau
  - UC Cooperative Extension
  - Department of Pesticide Regulation
  - San Jacinto RCD / NRCS
  - Eastern MWD, Nuevo WD, etc.
  - Trade & industry groups
  - Others????

# CWAD Program Status - Watershed Specific

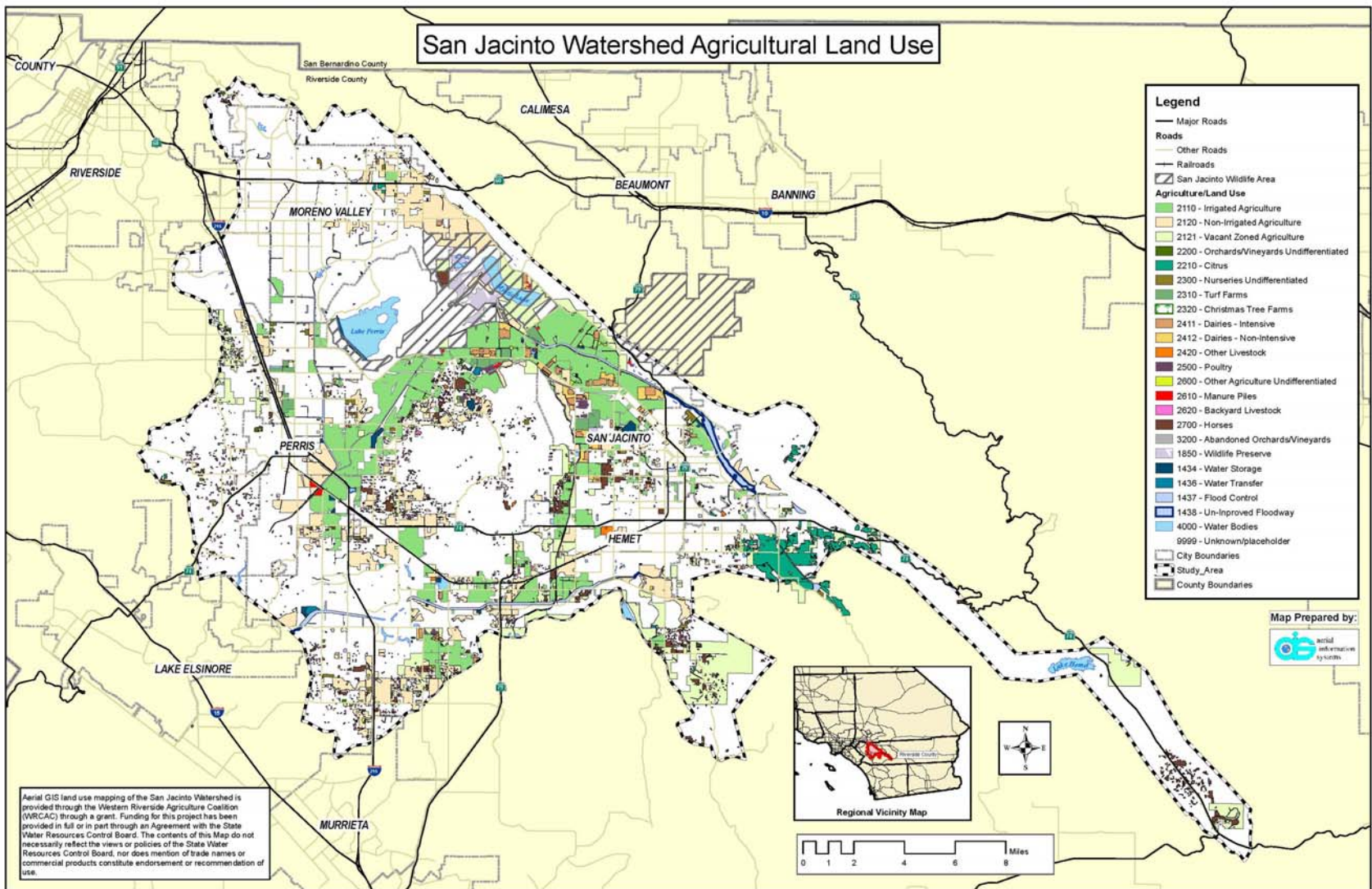
- Information & data sharing – Ag. land use classification & parcel ownership of potential enrollees (number unknown at this time...)
  - GIS / aerial mapping, field investigation & verification
  - Quantification of potential area in the watershed to be covered under CWAD program: ~80,000 ac

# Land Use Classifications

## Phase I CWAD Program

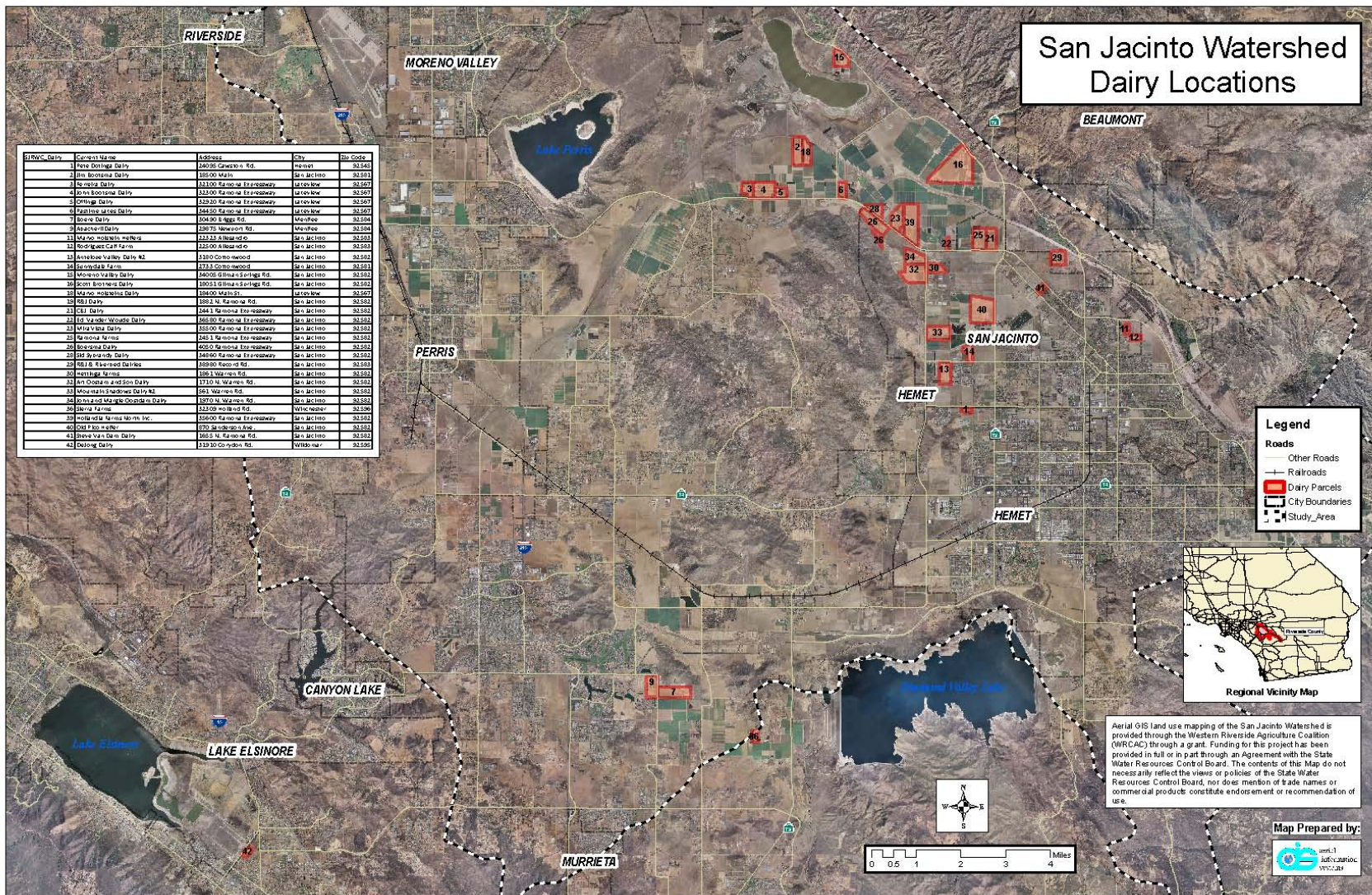
- Irrigated & non-irrigated farming
- Vacant - agriculture & grazing land
- Dairies, commercial livestock, poultry & related
- Orchards, vineyards, turf farms - active & abandoned
- Nurseries – wholesale, retail, tree farms
- Horses/backyard livestock/manure & compost piles
- Others???

# SJR Watershed Ag Land Use Map





# Dairies in San Jacinto Watershed





# *Thank You* ??Questions??

*For further information, contact:*

Athar Khan

(951) 782-3219

[akhan@waterboards.ca.gov](mailto:akhan@waterboards.ca.gov)

Mark Adelson

(951) 782-3234

[madelson@waterboards.ca.gov](mailto:madelson@waterboards.ca.gov)