

**CALIFORNIA REGIONAL WATER QUALITY CONTROL BOARD**  
**SAN DIEGO REGION**

**Public Workshop**

**Draft Tentative General Waste Discharge Requirements  
for Discharges from Commercial Agricultural and  
Nursery Operations within the San Diego Region**

July 15, 2015

City of Oceanside

San Luis Rey Wastewater Treatment Plant

Turner Conference Room



# WELCOME AND OPENING REMARKS

---

- Opening Comments
- Introductions by Sector
- Discussion Highlights from Day 1
- Agenda Review
- Meeting Ground Rules



# AGENDA REVIEW

---

- 9:00 to 9:15 Opening Remarks
- 9:15 to 10:00 Management Measures and Best Management Practices
- 10:00 to 10:10 Monitoring and Reporting Requirements
- 11:10 to 11:25 Break
- 11:25 to 12:20 Effective Implementation



# MEETING GROUND RULES

---

1. Electronics courtesy – please turn all devices to silent or off.
2. Be comfortable – take personal breaks if needed, restrooms and refreshments provided.
3. Honor time – we have a full agenda and need to spend some time with each topic.
4. Humor is welcome – it just should not be at someone else's expense.
5. Common conversational courtesy – don't interrupt others, use appropriate language, and don't make it hard to hear by having third-party conversations at the table.
6. All ideas and points of view have value – you do not have to agree with your neighbor; if you do not agree with something, propose an alternative that could meet everyone's interests.
7. Avoid editorials – avoid judging other people's motives or the value of their actions; instead explain what you need for your interests to be met and our work to be a success

# PROPOSED MANAGEMENT MEASURES AND PRACTICES

---

- Performance-Based Requirement
  - Minimize/Prevent Discharge to Surface Water
  - Minimize/Prevent Infiltration to Groundwater
- Growers Select & Implement
- Water Quality Protection Plan



# PROPOSED MMs/BMPs

---

## DISCUSSION

- Comments, Questions, Concerns
- San Diego Water Board Questions



# PROPOSED MONITORING & REPORTING

---

- Interview Findings
- Proposed Monitoring and Reporting
- Discussion



# FINDINGS: MONITORING & REPORTING

---

- Need to focus on addressing data-based water quality impairments or concerns.
- Biological assessment indicators may not be feasible.
- Need to integrate data already being gathered by other efforts.
- Suggested to develop a database to pilot and demonstrate the utility of integrated watershed monitoring, including necessary data sharing protocols.
- Suggested to prioritize sub/watersheds based on data, and tailor scope and intensity of requirements accordingly.



7/15/2015



# FINDINGS: MONITORING & REPORTING

---

## *CONTINUED*

- Need to share Board analyses of data, and use analyses to clarify goals and questions for sub/watersheds, and adjust requirements over time.
- Need to provide feedback on sufficiency of monitoring plans and and significance monitoring results.
  - This is critical for dischargers, as well as for communication to constituencies and enrollment.
- Need to work across divisions and across agencies to integrate permitting, monitoring requirements and reporting, and inspections where possible, as a cost efficiency measure.



# PROPOSED MONITORING & REPORTING

## CONSIDERATIONS

- What Monitoring Questions Need to be Asked
- Regional Monitoring
- Lessons Learned
- Cost



# PROPOSED MONITORING AND REPORTING

---

## COMPARISON OF DRAFT NO. 1 TO DRAFT NO. 2

Comparison	Draft No. 1	Draft No. 2
Regional Monitoring Sites	Rotating Watersheds	Select SMC Sites
Bioassessment Conducted	Yearly	Once Every 5 Years
Trend Monitoring Sites	No	Yes
Bacteria TMDL Monitoring	No	Yes



# PROPOSED MONITORING AND REPORTING

---

## CORE MONITORING QUESTIONS

- Where the MMs/BMPs employed as in the WQPP?
- Where the MMs/BMPs effective?
- Are Dischargers in the Rainbow Creek Watershed following the Nutrient Management Plan?
- Are the Bacteria TMDL WLA being met?



7/15/2015

12

# PROPOSED MONITORING AND REPORTING

---

## CORE MONITORING

- Visual Observations and Reporting
- Quarterly Trend Monitoring
- Quarterly Monitoring for Bacterial Indicators



# PROPOSED MONITORING AND REPORTING

---

## REGIONAL MONITORING QUESTIONS

- What is condition of waterbodies in areas influenced by Agricultural Operations?
- Where the MMs/BMPs effective?



# PROPOSED MONITORING AND REPORTING

---

## REGIONAL MONITORING

- Bioassessment Monitoring
- Once Every Five Years
- SMC Locations



# PROPOSED MONITORING AND REPORTING

---

## INDIVIDUAL DISCHARGER REPORTING

- One-Time Water Quality Protection Plan
- Yearly Self-Assessment
- Yearly Certification of Educational Requirement
- Yearly Monitoring Results, if needed.





# PROPOSED MONITORING AND REPORTING

---

## COALITION GROUP REPORTING

- One-Time Water Quality Protection Plan
- Quarterly Membership Update
- Yearly Self-Assessment Certification
- Yearly Educational Requirement Certification
- Yearly Monitoring Results



# The SMC Stream Survey



Raphaelm@sccwrp.org

## Overview and future directions

# Why collaborative monitoring?

---

The SMC was created in 2001, and began its stream survey in 2009 as a collaborative program of leading stormwater and regulatory agencies

Negotiate tradeoffs to maintain costs within existing budgets

Coordinate efforts to leverage resources and knowledge

Answer regional questions and provide context for site-specific management issues

Create platform for more in-depth studies



# Why bioassessment?

- Sensitive to multiple stressors
- Integrate across time and space
- Easy to sample
- Diverse life history
- Directly related to beneficial uses



# How are the data used?

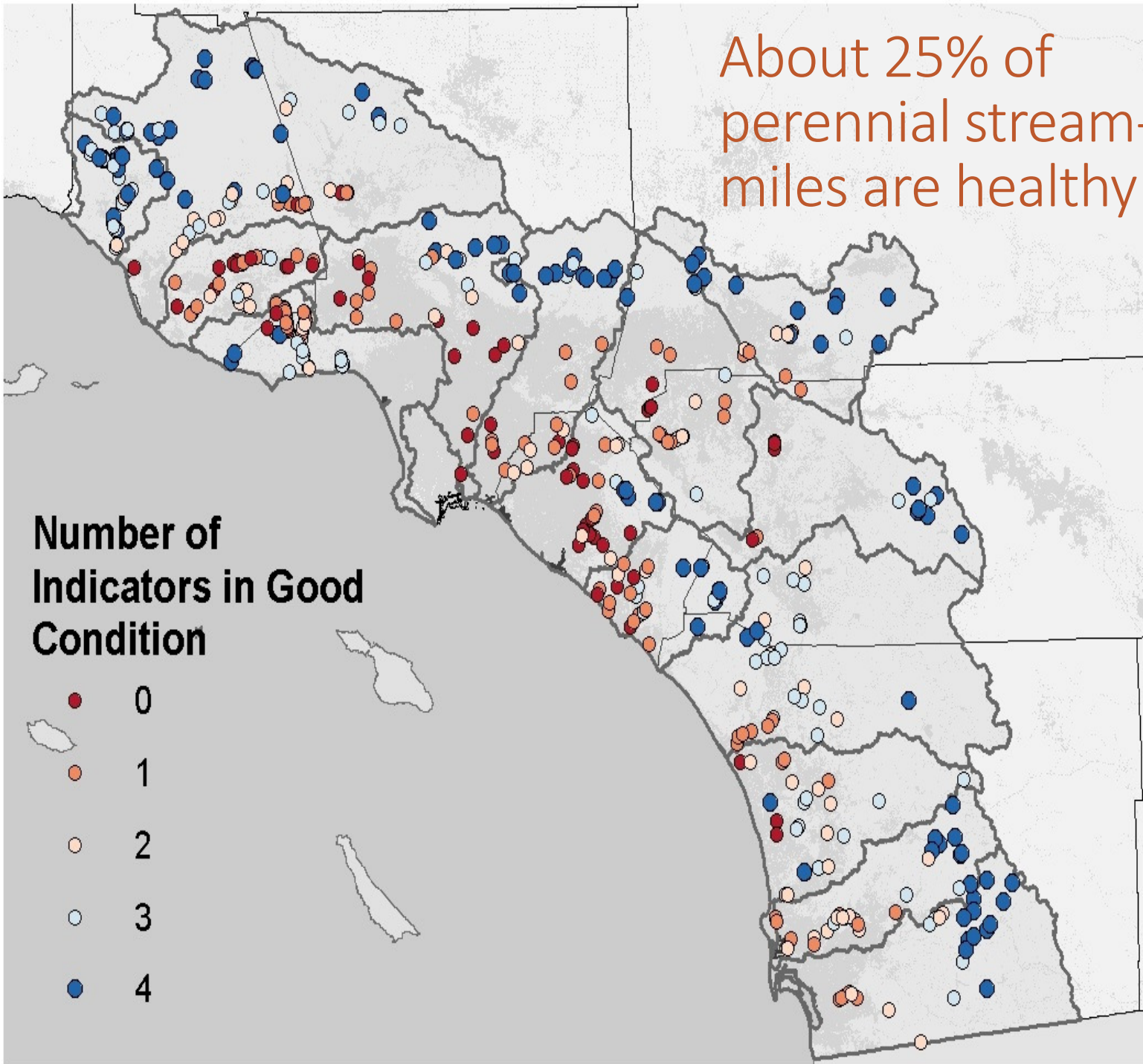
---

- Fulfill permit monitoring requirements (e.g., MS4)
- Provide context for compliance monitoring and impact assessment
- Guide statewide and regional policies (e.g., nutrient criteria, biological objectives)
- 305b/303d listing. The SMC serves as the southern California implementation of the statewide Perennial Stream Assessment
- Causal assessment: A primary source of comparator data

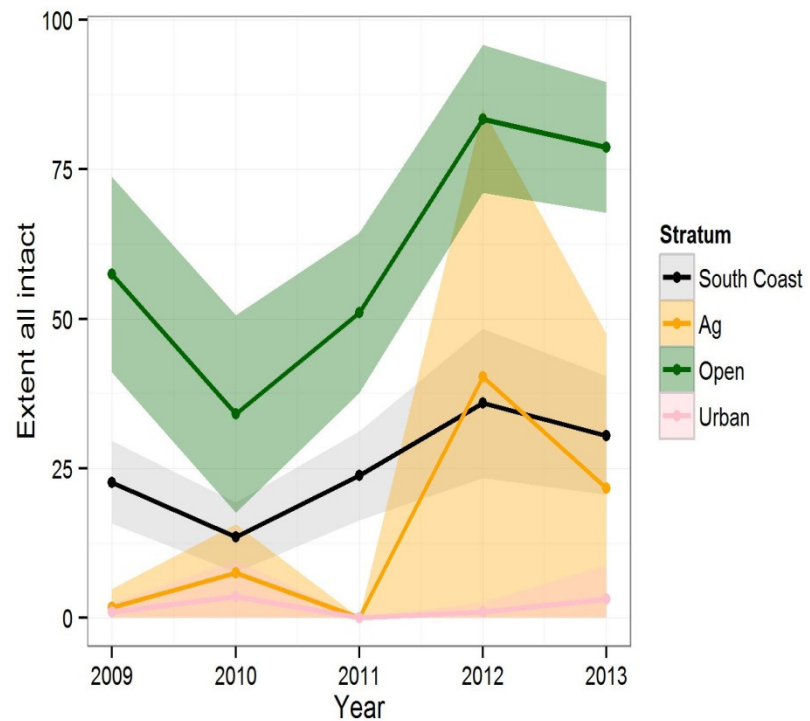
About 25% of perennial stream-miles are healthy

**Number of Indicators in Good Condition**

- 0
- 1
- 2
- 3
- 4



# Hard to see trends



Design obscured site-specific changes.

Few ag sites sampled in any given year.

# New partners for new cycle



Agricultural groups

Watershed monitoring groups

National parks and forests



# What does participation look like?

---

- Participants provide their own data (i.e., no pay-to-play)
- Participants follow our workplan (balance flexibility with group needs and interests)
  - Sites are selected according to our survey design.
  - All critical analytes are sampled at appropriate times
  - All methods adhere to workplan requirements
  - Data are submitted in the right formats at the right time
- Full engagement by representatives who attend technical workgroup meetings
- Group reports represent group consensus, but participants are encouraged use data for their own purposes.

Thank you!



# PROPOSED MRP

---

## DISCUSSION

- Comments, Questions, Concerns
- San Diego Water Board Questions



# EFFECTIVE IMPLEMENTATION

---

- Interview Findings from Facilitator
- Possible Formation of an ILRP Advisory Committee
- Discussion



7/15/2015

28

# Findings: Effective Implementation

---

- Need to play strong and visible leadership role, and interact regularly and directly with farmers and other major stakeholders.
- Can demonstrate collaborative water quality protection.
- Outreach will not be effective if the Board doesn't lead by example and support the efforts of partners.
- Need to meet farmers where they work.
- As noted earlier, need to partner with established and respected organizations.



# FINDINGS: EFFECTIVE IMPLEMENTATION

---

## *CONTINUED*

- As noted earlier, suggested to convene an advisory committee to provide feedback on implementation, support outreach and education, help disseminate findings and analyses, and possibly provide technical advice.
- Need to provide incentive(s) for participation, such as technical assistance.
- As noted earlier, need to justify fee rates and document use of those fees, for transparency and accountability.



# EFFECTIVE IMPLEMENTATION

---

- Outreach
- Establishing and Maintaining Cooperative Alliances
- Inspections
- Enforcement
- Technical Support
- Advisory Committee



# EFFECTIVE IMPLEMENTATION

---

## DISCUSSION

- Comments, Questions, Concerns
- San Diego Water Board Questions





# REVIEW OF ACTION ITEMS

---



7/15/2015

33

# NEXT STEPS

---

- Meeting Notes
- Release of Tentative Order – *End of August*
- August 3, 2015 Public Workshop
- Public Comment Period Closes – *Mid September*
- Public Hearing – *End 2015*



# CALIFORNIA REGIONAL WATER QUALITY CONTROL BOARD SAN DIEGO REGION

## Thank You for Your Participation

For additional information please contact

Barry Pulver

(619) 521-3381

[Barry.Pulver@waterboards.ca.gov](mailto:Barry.Pulver@waterboards.ca.gov)

<http://www.waterboards.ca.gov/sandiego/>

