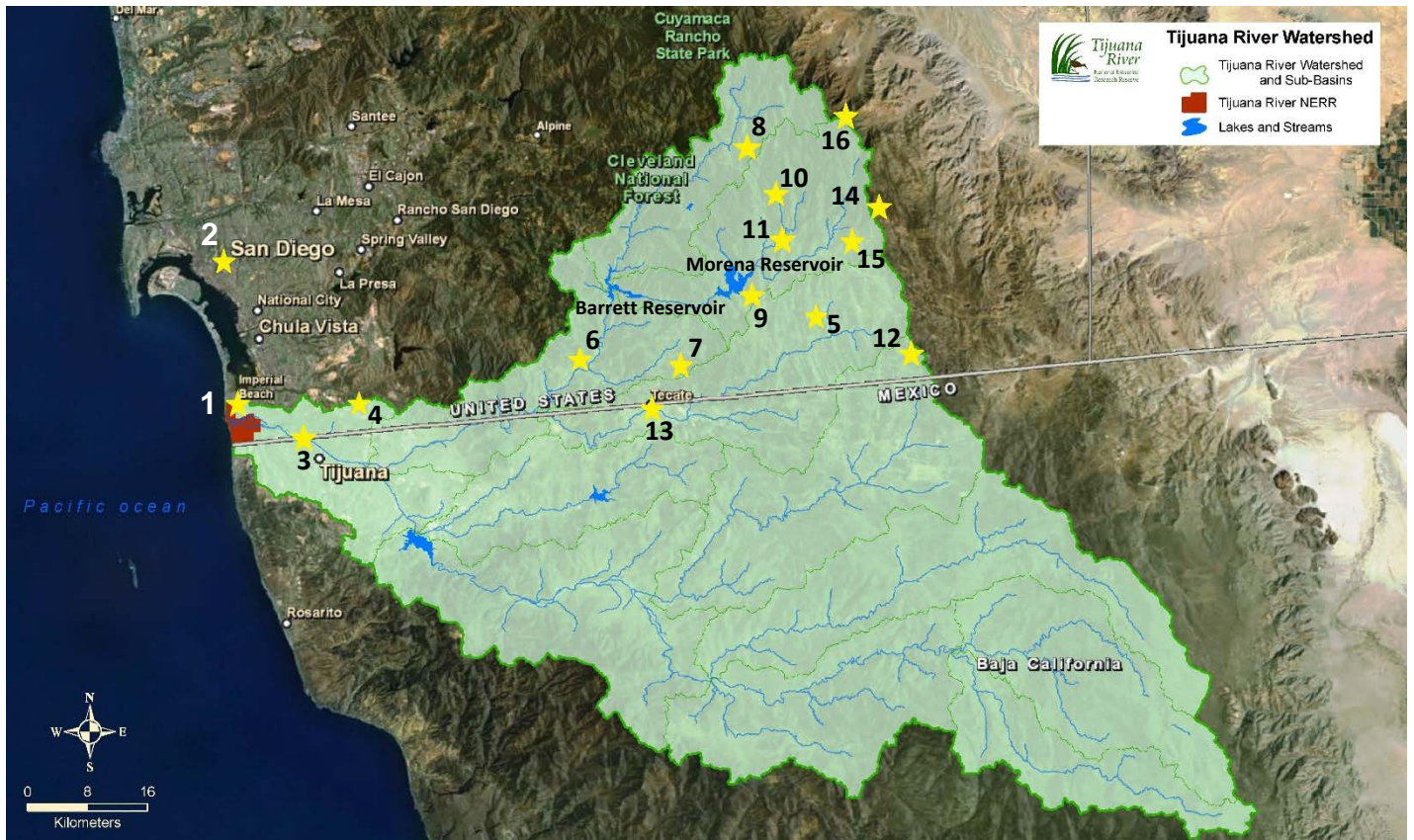


## NATURAL RESOURCE STEWARDSHIP: ROLES, RESPONSIBILITIES, AND ACTIVITIES IN THE TIJUANA RIVER WATERSHED (U.S. SIDE)

**Purpose:** The purpose of this summary is to provide general natural resource and water quality related information for people who are interested in the Tijuana River watershed, but are unfamiliar with some of the roles, responsibilities, and activities in the United States (U.S.) portion of the watershed. Additional information is available through the links provided.

**Description:** Communities in the United States (U.S.) portion of the Tijuana River watershed include the cities of Imperial Beach [1] and San Diego [2]; (including the communities of San Ysidro [3] and Otay Mesa [4]); as well as, several unincorporated communities: Campo [5], Barrett Junction [6], Potrero [7], Pine Valley [8], Morena Village [9], Buckman Springs [10], Boulder Oaks [11], Tierra del Sol [12], and Tecate [13]. Kumeyaay Indian reservations within the watershed include Campo [5], Manzanita [14], and parts of the La Posta [15] and Ewiaapaayp lands [16].



Within the watershed, on the U.S. side, there are two Municipal drinking water supply reservoirs, one open space preserve, two state parks, one national forest, one national reserve that contains a state park and a national wildlife refuge, two military installations, three municipal stormwater copermittees, seven public landowner entities, and two wastewater treatment plants, including one that produces recycled water.

## Table of Contents

<a href="#"><u>Public Landowners</u></a> .....	2
<a href="#"><u>Reservoirs</u></a> .....	3
<a href="#"><u>Open Space Preserve</u></a> .....	4
<a href="#"><u>National Reserve</u></a> .....	5
<a href="#"><u>Wildlife Refuge</u></a> .....	6
<a href="#"><u>State Parks</u></a> .....	7
<a href="#"><u>National Forest</u></a> .....	9
<a href="#"><u>Military Installations</u></a> .....	10
<a href="#"><u>Stormwater Regulations</u></a> .....	12
<a href="#"><u>Wastewater Treatment Plants</u></a> .....	13
<a href="#"><u>California Environmental Protection Agency Role</u></a> .....	15
<a href="#"><u>California-Mexico Border Relations Council</u></a> .....	16
<a href="#"><u>United States Environmental Protection Agency Role</u></a> .....	17
<a href="#"><u>International Boundary and Water Commission Role</u></a> .....	18
<a href="#"><u>Tijuana River Valley Recovery Team Role</u></a> .....	19
<a href="#"><u>Army Corps of Engineers Role</u></a> .....	20
<a href="#"><u>Agency Glossary</u></a> .....	21

## Public Landowners

The public land owners on the U.S. side of the watershed are:

- Federal Entities
  - United States Fish & Wildlife Service
  - United States International Boundary and Water Commission (USIBWC)
  - U.S. Navy
- State of California Department of Parks and Recreation
- County of San Diego
- City Agencies
  - City of San Diego
  - City of Imperial Beach



## Reservoirs

### Two Reservoirs: Barrett Reservoir and Morena Reservoir

In both reservoirs, water levels are monitored weekly. As of September 2016, Barrett Reservoir was 5.4% full and Morena Reservoir was 2.2% full. Both reservoirs are owned and operated by the City of San Diego, but the quality of the water that flows into the reservoirs is regulated by the San Diego Regional Water Quality Control Board, a state agency that enforces the federal Clean Water Act, as well as state laws that protect the quality of surface and ground waters in the San Diego region. The quality of water, with respect to treatment and distribution for potable supply, is regulated by the state Division of Drinking Water. Water from both reservoirs undergo treatment at the Otay Water Treatment Plant.



### Barrett Reservoir

Barrett Dam was completed by the City of San Diego in 1922, creating Barrett Reservoir. It has a water storage capacity of 34,805.5 acre-feet and is located at the confluence of Pine Valley Creek and Cottonwood Creek. Cottonwood Creek is the upstream (U.S. portion) of Mexico's Arroyo Alamar.



### Morena Reservoir

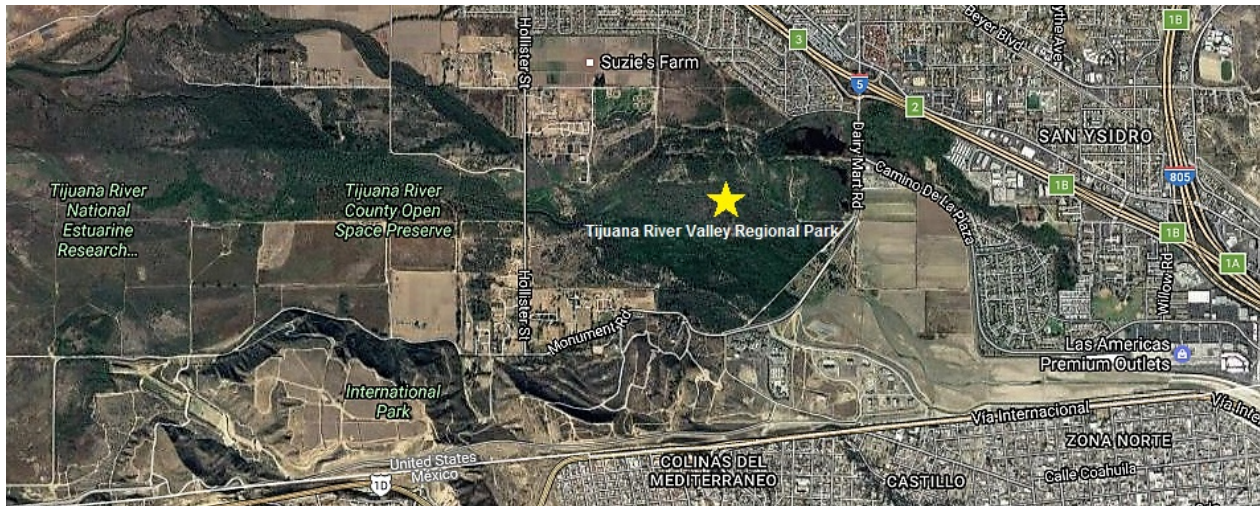
Morena Dam, in Cottonwood Creek, was completed in 1912. Morena Reservoir is located 3,000 feet above sea level. It has a water storage capacity of 50,694 acre-feet and connects to Barrett Reservoir so that water diverts from Morena Reservoir. Barrett Reservoir connects to the Dulzura Conduit, which can divert water to supply a reservoir outside of the watershed, the Lower Otay Reservoir.



**Web links:** Morena Reservoir: <https://www.sandiego.gov/water/recreation/reservoirs/morena>  
 Barrett Reservoir: <https://www.sandiego.gov/water/recreation/reservoirs/barrett>  
 San Diego Regional Water Quality Control Board: <http://www.waterboards.ca.gov/rwqcb9/>  
 Division of Drinking Water:  
[http://www.waterboards.ca.gov/drinking\\_water/programs/index.shtml](http://www.waterboards.ca.gov/drinking_water/programs/index.shtml)

**Open Space Preserve**  
**Tijuana River Valley Regional Park**

The County of San Diego owns and operates the Tijuana River Valley Regional Park, which is located in the southwest corner of San Diego County, adjacent to the Tijuana River National Estuarine Research Reserve and Border Field State Park. Tijuana River Valley Regional Park is home to two dozen sensitive species and more than 340 bird species have been spotted there (more than two-thirds of the total species seen in all of San Diego County). The park offers over 1,800 acres of diverse habitats, from dense riparian forests along the Tijuana River to coastal maritime sage scrub. It includes an extensive system of trails for hiking, biking, and horseback riding.



Dairy Mart Boardwalk



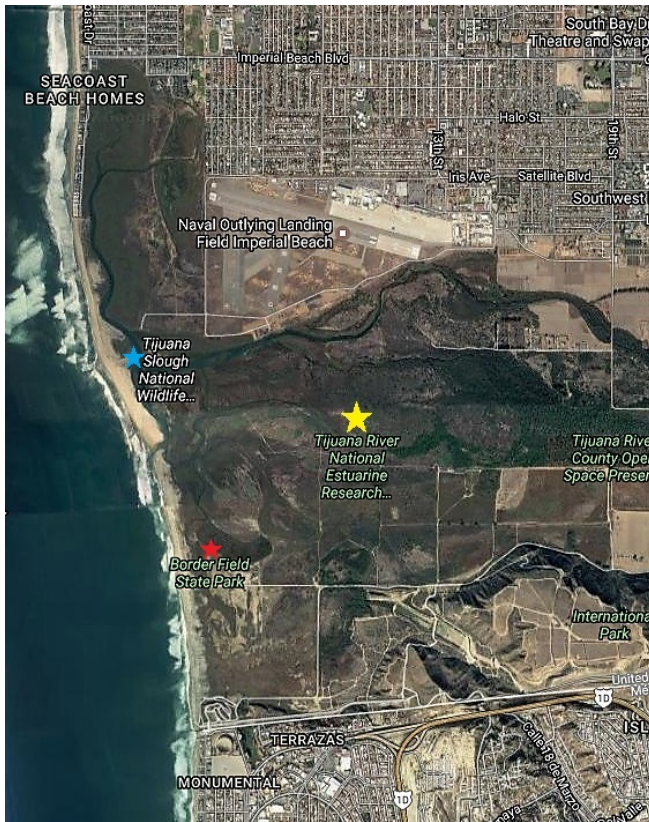
Dairy Mart Pond

**Web link:** <http://www.sandiegocounty.gov/parks/openspace/tjrv.html>

## National Reserve

### Tijuana River National Estuarine Research Reserve

The 2,800-acre Tijuana River National Estuarine Research Reserve (TRNERR) is part of a nation-wide network of protected areas established for long-term research, education, and stewardship. TRNERR is a partnership between federal and state agencies; it involves the National Oceanic and Atmospheric Administration (NOAA), California State Parks, and the U.S. Fish & Wildlife Service. California State Parks operates the reserve's visitor center and maintains Border Field State Park, which is within the reserve. The U.S. Fish and Wildlife Service manages the Tijuana Slough National Wildlife Refuge, which is also within the reserve. The reserve encompasses beach, dune, mudflat, salt marsh, riparian, coastal sage scrub, and upland habitats. Critical issues confronted by the reserve include habitat conservation and restoration, endangered species management, management of the wastewater from Mexico, sediment management, and the integration of recreation.



- ★ = Tijuana River National Estuarine Reserve
- ★ = Tijuana Slough National Reserve
- ★ = Border Field State Park



**Web link:** Tijuana River National Estuarine Research Reserve:

<http://www.sandiegocounty.gov/parks/openspace/tjrv.html>

## Wildlife Refuge

### Tijuana Slough National Wildlife Refuge

Tijuana Slough, located within the reserve, is a 1,072-acre wetland where the Tijuana River meets the sea. The refuge was established in 1980. The slough's habitats include open water, tidal salt marsh, beach dune, riparian, vernal pool and upland coastal sage scrub habitats. Over 340 species of birds have been recorded on the refuge and in the adjacent Tijuana River Valley. The visitor center and native plant gardens offer interactive exhibits, guided bird and nature walks on four miles of available trails, as well as a Junior Ranger program. Hundreds of schoolchildren from kindergarten through high school participate in environmental education programs. Volunteers assist staff with projects such as native plant restoration.



Looking north at the Tijuana Slough



Looking north at the Visitor Center

**Web link:** Tijuana Slough National Wildlife Refuge:  
[https://www.fws.gov/refuge/Tijuana\\_Slough/about.html](https://www.fws.gov/refuge/Tijuana_Slough/about.html)

## State Parks

### Border Field State Park

Located within the TRNERR, Border Field State Park is in the southwestern corner of the continental U.S. The sand dunes and salt marshes give refuge to critically threatened and endangered birds, such as the Western Snowy Plover, the California Least Tern, and the Light-footed Clapper Rail. Park visitors may enjoy beautiful views of the ocean and recreational activities such as walking on the beach, hiking, biking, horseback riding, and bird watching.



Border Field State Park



Horseback riding along the beach

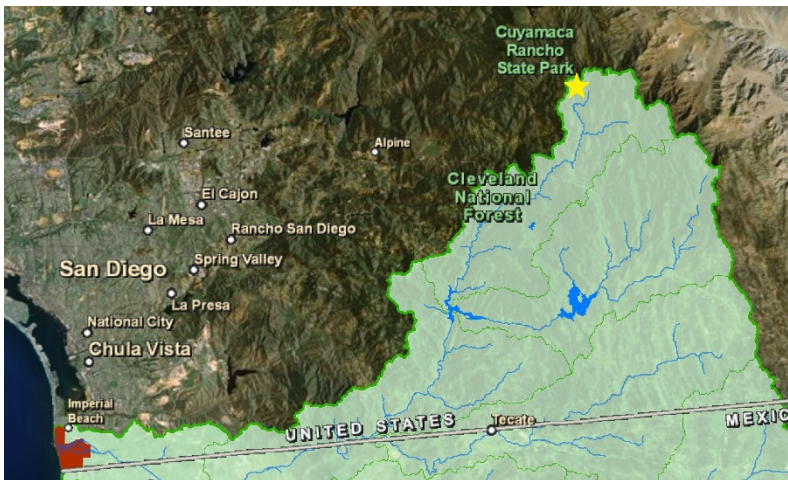


View of Reserve looking north from Monument Mesa

**Web Link:** Border Field State Park: [http://www.parks.ca.gov/?page\\_id=664](http://www.parks.ca.gov/?page_id=664)

## **Cuyamaca Rancho State Park**

A portion of Cuyamaca Rancho State Park is located in the northern portion of the Tijuana River watershed, at elevations over 4,000 feet above sea level. The park offers recreation in a forest with oak and pine trees, meadows, and creeks. There are 166 campsites, and over 100 miles of trails for hiking, biking, and horseback riding.



**Web link:** Cuyamaca Rancho State Park: [http://www.parks.ca.gov/?page\\_id=667](http://www.parks.ca.gov/?page_id=667)

## National Forest

### The Cleveland National Forest

The Cleveland National Forest, settled in greater San Diego area, spans 460,000 acres intersecting parts of Orange and Riverside Counties. It provides ample recreation, sprawling mountain vistas, and an abundance of wildlife and natural resources.

The Descanso District of the Cleveland National Forest extends five miles from the Mexican border northward approximately 20 miles to Cuyamaca Rancho State Park and is the farthest southern district in California. The wild shrub and tree-covered mountains are remnants of a landscape that at one time covered most of Southern California, as the settling of missions, towns, cities, and suburbs scaled back much of the dense growth. The Descanso Ranger District is a haven for many species of plants and wildlife, such as mountain lions, bobcats, mule deer, coyotes, gray foxes, ringtail cats, long tail weasels, opossum, black tail jackrabbits, desert cottontails, California ground squirrels, and a variety of plants.



### Web links:

<http://www.fs.usda.gov/cleveland/>

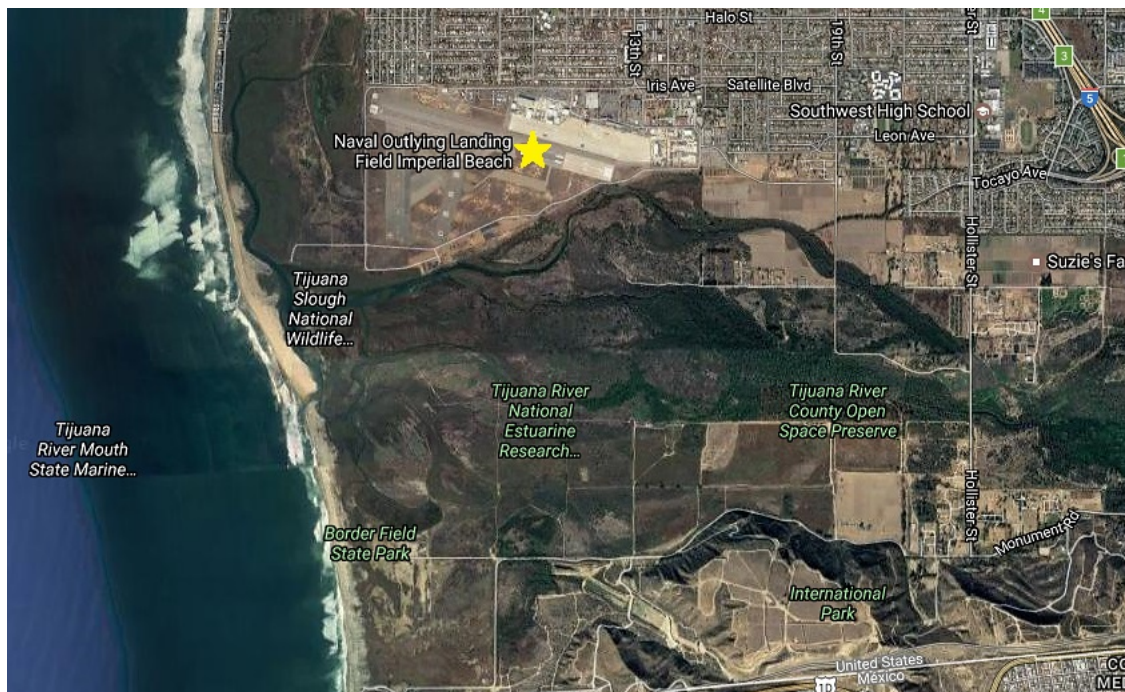
<http://www.fs.usda.gov/detail/cleveland/home/?cid=FSEPRD474997>

## Military Installations

### Naval Base Coronado Imperial Beach Outlying Landing Field

Naval Base Coronado's Imperial Beach Outlying Landing Field (OLF Imperial Beach), owned and operated by the United States Navy, is situated on 1,204 acres within the city limits of Imperial Beach. The installation has been used for military purposes since 1917. Currently, 284 acres of the land south of the OLF Imperial Beach is leased to the State of California. The U.S. Navy and USFWS have an agreement for USFWS to manage over 600 additional acres and the Navy has leased 6 acres to the County of San Diego Department of Parks and Recreation for trails management, with agreements in place for use of land by Job Corps and CBP.

The mission of OLF Imperial Beach is to handle the overflow of helicopter squadron traffic from Naval Air Station (NAS) North Island. As a result, the helicopter squadrons at NAS North Island do 95% of their operations at Imperial Beach.



### Web link:

OLF Imperial Beach:

[http://www.cnrc.navy.mil/regions/cnrsw/installations/navbase\\_coronado/about/installations/imperial\\_beach\\_outlying\\_landing\\_field.html](http://www.cnrc.navy.mil/regions/cnrsw/installations/navbase_coronado/about/installations/imperial_beach_outlying_landing_field.html)

### **La Posta Mountain Warfare Training Facility**

The Mountain Warfare Training Facility Camp Michael Monsoor is located near the city of Campo. The 1,063 acre site has a firing range, an administration building, and a dormitory. The Navy has operated on the site since the early 1960s, and is seeking to set aside an additional 4,486 acres of Federal Bureau of Land Management property for the facility.

In 1998, Naval Base Coronado gave permission for the Special Warfare Community to use the site for mountain warfare training. This site is exceptionally important because of its unique physical characteristics similar to many foreign countries. The unencumbered area around LaPosta makes it an ideal location for special reconnaissance training, map and compass training, and other specialized special warfare training.



**Web link:**

La Posta Mountain Warfare Training Facility:

[http://www.cnic.navy.mil/regions/cnrsw/installations/navbase\\_coronado/about/installations/mountain\\_warfare\\_training\\_camp\\_michael\\_monsoor.html](http://www.cnic.navy.mil/regions/cnrsw/installations/navbase_coronado/about/installations/mountain_warfare_training_camp_michael_monsoor.html)

## **Stormwater Regulations**

All of the discharges of storm water to surface waters in the San Diego region, including the U.S. side of the Tijuana River watershed, are regulated by the San Diego Regional Water Quality Control Board through these four permits:

- San Diego Regional Phase I Municipal Separate Storm Sewer Systems (MS4) Permit
- Construction Storm Water Permit
- Industrial Storm Water Permit
- Caltrans Storm Water Permit

The Phase I MS4 copermittees present in the watershed are the City of San Diego, the City of Imperial Beach, and the County of San Diego. Together, they are implementing a watershed water quality Improvement Plan focused on sedimentation and siltation and turbidity.

### **Web link:**

San Diego Regional Water Quality Control Board Storm Water Program:

[http://www.waterboards.ca.gov/sandiego/water\\_issues/programs/stormwater/index.shtml](http://www.waterboards.ca.gov/sandiego/water_issues/programs/stormwater/index.shtml)

## Wastewater Treatment Plants

Wastewater is managed in two ways on the U.S. side of the watershed: 1) septic tanks and 2) sewage collection and treatment. Septic tanks are regulated by the County of San Diego or the San Diego Regional Water Quality Control Board. Any remaining sewage generated is required to enter into a sewage collection system. Raw and inadequately treated sewage discharges to surface waters and ground waters are prohibited.

Some of the sewage that enters into a sewage collection system pumps to the City of San Diego's Point Loma Wastewater Treatment Plant (outside of the watershed), where it undergoes advanced primary treatment before the effluent is discharged through an ocean outfall (Point Loma Ocean Outfall) approximately 4.5 miles out into the ocean. This plant treats approximately 145 million gallons a day (MGD), but permits to treat up to 240 MGD.



### South Bay Water Reclamation Plant

The remaining sewage that enters into a sewage collection system is sent to the City of San Diego's South Bay Water Reclamation Plant, which is located just north of the border, about two miles west of where the Tijuana River main channel crosses the border. This plant is capable of recycling water (used primarily for irrigation). It treats to secondary or tertiary standards depending on the demand for recycled water. Based on the demand, some portion undergoes secondary treatment and the effluent is discharged through an ocean outfall (South Bay Ocean Outfall) approximately 3.5 miles out into the ocean. The rest (if not all, depending on the demand) undergoes tertiary treatment before it is distributed for reuse. This plant generally treats at least 7.5 MGD, but permits to treat up to 15 MGD.

### **South Bay International Wastewater Treatment Plant**

The USIBWC South Bay International Wastewater Treatment Plant (IWTP) is also just north of the border, about two miles west of where the Tijuana River main channel crosses the border. Sewage collected in Tijuana is conveyed across the border and treated at this plant (secondary treatment). Dry weather runoff captured at the canyon collectors at five north-draining canyons is also conveyed to the plant and treated. These collectors are located at Goat Canyon, Smugglers Gulch, Silva Drain, Canyon del Sol, and Stewart's Drain. After treatment at the IWTP, effluent is discharged through the South Bay Ocean Outfall (comingles with South Bay Water Reclamation Plant effluent) approximately 3.5 miles out into the ocean. This plant treats approximately 25 MGD, which is its permitted limit.



1. Goat Canyon Collector
2. Smuggler's Gulch Canyon Collector
3. Canyon del Sol Collector
4. Silva Drain Canyon Collector
5. Stewart's Drain Canyon Collector

National Pollutant Discharge Elimination System (NPDES) permits adopted and enforced by the San Diego Regional Water Quality Control Board regulate all three abovementioned plants. In addition, Waste Discharge Requirements (WDRs) regulate the South Bay Water Reclamation Plant for the reuse of its tertiary effluent.

#### **Web links:**

South Bay Water Reclamation Plant: <https://www.sandiego.gov/mwwd/facilities/southbay>

South Bay International Wastewater Treatment Plant:

[http://www.ibwc.state.gov/mission\\_operations/sbiwtp.html](http://www.ibwc.state.gov/mission_operations/sbiwtp.html)

## California Environmental Protection Agency Role

The border region faces unique environmental challenges and opportunities, as two countries with different environmental laws meet and share common waterways and airsheds. CalEPA's Border Affairs Program (Border Program) promotes interagency cooperation on environmental programs in California and Baja California to help ensure a cleaner, safer, healthier, and more prosperous border region. The Border Program works towards binational solutions on environmental issues surrounding the California-Mexico border region, such as water quality, air quality and waste and sewage management. The program is a collaborative effort between CalEPA and its boards, departments, and offices to address environmental issues on multiple fronts and coordinate efforts with other California state agencies, Baja California, the U.S. and Mexican federal governments and Tribal Nations in the border region. It also advocates for policies and projects that benefit the environment at the border. With the CalEPA Secretary chairing the Border Relations Council, the Border Program coordinates and oversees Council activities and projects, organizes biannual Council meetings and compiles the Annual Council Report submitted to the Legislature. The program works collaboratively toward implementation of various plans developed recently which target environmental improvements at the border, such as the New River Improvement Project Strategic Plan (published in 2011 and updated in 2016), the Tijuana River Valley Strategic Plan and the Solid Waste and Waste Tire Strategic Plan. The Border Program also oversees the implementation of the Climate Change and Environment MOU.



**CalEPA**  
California Environmental  
Protection Agency

### Web link:

<https://calepa.ca.gov/border-affairs-program/>

## **California-Mexico Border Relations Council**

The California-Mexico Border Relations Council is the central organizational body that coordinates interagency projects, programs, initiatives, and partnerships along the California-Mexico border. It also serves as a representative body of the State of California whose goal is to continue to develop and enhance cross-border relations between California and Mexico.

Border relations initiatives with Mexico have a long history in California. Legislation enacted in 1982 established the Office of California-Mexico Affairs within the Technology, Trade, and Commerce Agency. In 2003, the agency was abolished through Assembly Bill (AB) 1757, (Committee on Budget, Chapter 229, Statutes of 2003), and the duties of the agency were reassigned to other state entities. In 2004, the California Research Bureau released a report that listed California-Mexico programs operating in more than 100 state agencies. A majority of these programs are now defunct because no organizing entity existed to coordinate interagency cooperation.

In 2006, Assembly Bill 3021 (Núñez, Chapter 621, Statutes of 2006) was enacted to fill the need for statewide oversight and coordination of multi-agency involvement with Mexico. It created the California-Mexico Border Relations Council, which serves as the central organizing body that oversees and collaborates on California-Mexico border issues.

The Council:

- Coordinates cross-border programs, initiatives, projects, and partnerships within California state agencies.
- Establishes California state agency policies for the collection and sharing of cross-border data.
- Identifies and recommends changes in the law needed to achieve the goals of the Council.
- Provides an annual report of activities to the Legislature.

Chaired by the Secretary for Environmental Protection, the Council is comprised of eight state secretaries or directors of state offices: the California Environmental Protection Agency (CalEPA); the California Health and Human Services Agency (CHHS); the California Natural Resources Agency (CNRA); the California State Transportation Agency (CalSTA); the California Department of Food and Agriculture (CDFA); the California Governor's Office of Emergency Services (Cal OES); the Business, Consumer Services and Housing Agency (BCSH); the California Governor's Office of Business and Economic Development (GO-Biz); and the U.S. Environmental Protection Agency (U.S. EPA), which is an ex-officio member.

### **Web link:**

<https://calepa.ca.gov/border-affairs-program/california-mexico-border-relations-council/>

## United States Environmental Protection Agency Role

USEPA funds projects that help solve issues the Watershed faces. Some of the projects USEPA is funding are the wastewater improvement projects in Tijuana via the Border Environment Infrastructure Fund (BEIF), administered by the North American Development Bank (NADB) and Border Environment Cooperation Commission (BECC). Over the last two decades, USEPA has invested \$295M to treat wastewater in Tijuana, Tecate, and Rosarito.



The USEPA is also working with partners at US Department of Agriculture, San Diego State University, and Ensenada's Center for Scientific Investigation and Higher Education (CICESE) to develop a sophisticated sediment model for Los Laureles Canyon in Tijuana. Such a model will allow for the forecasting of future sediment loads into the U.S. under various rainfall and land-use scenarios. This model will be completed in 2017.

USEPA and SEMARNAT manage Border 2020, a program implemented under the 1983 La Paz Agreement. Border 2020 funds projects that address the environmental problems, including public health problems, in the border region. The USEPA has recently decided on five new projects, in the priority areas of air, water, and land, to be funded in the California/Baja California border region:



1. San Ysidro Port-Of-Entry Community Air Study (Air)
2. San Diego-Tijuana Border Region Open Space Enhancement Program (Water)
3. Evaluating the 2017 cross-border wastewater spill sources and impacts (Water)
4. Waste Collection network in Mexicali (Land)
5. Reduction of pollution generated by disposable plastic bags (Land)

Finally, via the binational Border 2020 program, The USEPA holds semi-annual Tijuana River Watershed Task Force meetings, which are open to the public. These meetings serve as a venue to discuss water quality issues in the Tijuana River Watershed on both sides of the border, and are often held jointly with the Tijuana River Valley Recovery Team meetings."



### Web link:

<https://www.epa.gov/border2020/region-9-border-2020-funded-projects-2015>

## International Boundary and Water Commission Role



The International Boundary and Water Commission (IBWC) has the responsibility of applying the boundary and water treaties between the United States and Mexico and settling differences that may arise in their application. The IBWC is an international body composed of the United States Section and the Mexican Section, each headed by an Engineer-Commissioner appointed by his/her respective president. Each Section is administered independently of the other. The United States Section of the International Boundary and Water Commission (USIBWC) is a federal government agency and is headquartered in El Paso, Texas. The IBWC operates under the foreign policy guidance of the Department of State. The Mexican Section is under the administrative supervision of the Mexican Ministry of Foreign Affairs and is headquartered in Ciudad Juarez, Chihuahua, Mexico. The Convention of 1889 creating the International Boundary Commission (IBC), and the 1944 Treaty, which expanded its responsibilities and changed its name to the International Boundary and Water Commission (IBWC), both provide that it shall consist of a United States Section and a Mexican Section.

In October 2015, the IBWC Commissioners signed Minute 320 titled, “General Framework for Binational Cooperation on Transboundary Issues in the Tijuana River Basin,” which enables priority issues of sediment, trash, and water quality in the Tijuana River watershed to be addressed cooperatively.

### Web links:

[http://www.ibwc.state.gov/About\\_Us/About\\_Us.html](http://www.ibwc.state.gov/About_Us/About_Us.html)

[http://www.ibwc.state.gov/Files/Minutes/Minute\\_320.pdf](http://www.ibwc.state.gov/Files/Minutes/Minute_320.pdf)

## Tijuana River Valley Recovery Team Role

For many years, trash and sediment deposition have been an enduring problem in the Tijuana River Valley. In 2008, the San Diego Water Board convened its first Tijuana River Valley sediment and trash workshop, which led to the creation of the Tijuana River Valley Recovery Team, a consensus-based collaboration of over 30 federal, state, and local government agencies, environmental and science communities, and other interested organizations and stakeholders from both sides of the border. The Recovery Team developed a Recovery Strategy in 2012 to concisely summarize the first phase of actions in a way that will allow stakeholders, policy makers, and potential funding sources have a clear understanding of both the problems and the solutions and help the Recovery Team to achieve its vision of a healthy Tijuana River Watershed in a manner that is credible, durable, and acceptable to the communities on both sides of the Border. Due to Recovery Team efforts, there is now a better understanding of 1) existing trash and sediment problems in the Tijuana River Valley, 2) how the hydrologic and hydraulic functions of storm flows affect the Tijuana River Valley, and 3) how changes to physical characteristics of the Tijuana River Valley impact the floodplain. In 2015, based on this improved understanding and priorities established by the Recovery Team, specific projects with defined five-year objectives were developed in a 2015 Five-Year Action Plan.



Recovery Strategy



Tijuana River Valley Recovery Team  
Five-Year Action Plan  
March 2015

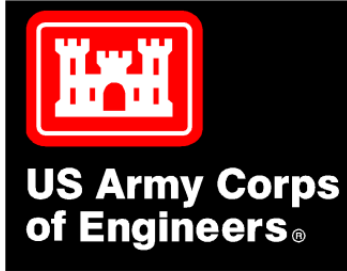


Five-Year Action Plan

**Web link:**

[http://www.waterboards.ca.gov/rwqcb9/water\\_issues/tijuana\\_river\\_valley\\_strategy/index.shtml](http://www.waterboards.ca.gov/rwqcb9/water_issues/tijuana_river_valley_strategy/index.shtml)

## Army Corps of Engineers Role



The Army Corps of Engineers (ACOE) is a U.S. military branch that provides public and military engineering services to strengthen national security and reduce risks from disasters. It conducts projects in the watershed at times, including hydraulics and hydrology evaluations of the watershed (both sides of the border) at this time.

### Web link:

<http://www.usace.army.mil/>

## Agency Glossary

### **Army Corps of Engineers (ACOE)**

A Federal Agency that is responsible for investigating, developing and maintaining the nation's water and related environmental resources.

<http://www.usace.army.mil/>

### **California State Parks**

A state agency that manages 280 park units, which contain the finest and most diverse collection of natural, cultural, and recreational resources to be found within California.

<https://www.parks.ca.gov/>

### **City of Imperial Beach**

<http://www.imperialbeachca.gov/>

### **City of San Diego**

<https://www.sandiego.gov/>

### **International Boundary and Water Commission (IBWC)**

The International Boundary and Water Commission has responsibility for applying the boundary and water treaties between the United States and Mexico and settling differences that may arise in their application.

[http://www.ibwc.state.gov/About\\_Us/About\\_Us.html](http://www.ibwc.state.gov/About_Us/About_Us.html)

### **National Oceanic and Atmospheric Administration (NOAA)**

A federal agency that understands and predicts changes in climate, weather, oceans and coasts

<http://www.noaa.gov/>

### **San Diego Regional Water Quality Control Board (San Diego Water Board)**

A State Water Resources Control Board region that is comprised of the San Diego, Imperial and Riverside counties. The agency develops and enforces water quality objectives and implements plans that will best protect the area's waters while recognizing our local differences in climate, topography, geology and hydrology.

<http://www.waterboards.ca.gov/sandiego/>

### **The County of San Diego**

<http://www.sandiegocounty.gov/>

### **Tijuana River Valley Recovery Team (TRVRT)**

The Recovery Team provides a forum for coordinating regulatory processes and project review that can meet the needs of individual stakeholders while benefitting the overall recovery of the Valley and the watershed. Within the Recovery Team, these agencies include: U.S. IBWC, the EPA, U.S. Army Corp of Engineers, U.S. Fish and Wildlife Service, the California Department of Fish and Game, the California State Water Resources Control Board, the Regional Board, and others. Each of these

agencies has specific and often independent processes to review and approve projects conducted under their jurisdictional authority.

[http://www.waterboards.ca.gov/rwqcb9/water\\_issues/tijuana\\_river\\_valley\\_strategy/index.shtml](http://www.waterboards.ca.gov/rwqcb9/water_issues/tijuana_river_valley_strategy/index.shtml)

**Tijuana River National Estuarine Research Reserve (TRNERR)**

A federal-state partnership for long-term research, education and stewardship.

<http://trnerr.org/>

**United States Fish and Wildlife Service (USFWS)**

A federal agency that conserves protects and enhances fish, wildlife, and plants and their habitats for the continuing benefit of the American people.

<https://www.fws.gov/>

**United States Navy (U.S. Navy)**

<http://www.navy.mil/>

**United States Environmental Protection Agency (USEPA)**

A federal agency that ensures all Americans are protected from significant risks to human health and the environment where they live, learn, and work and that federal laws protecting human health and the environment are enforced fairly and effectively

<https://www.epa.gov/>