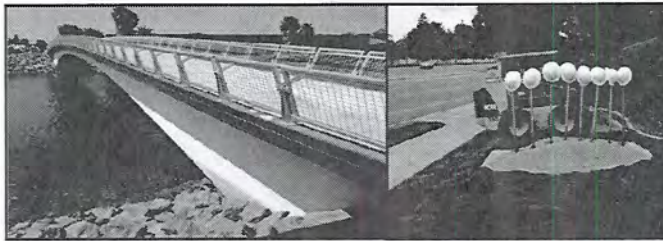


Attachment 5

Field Engineering



Construction Management Program

April 8, 2014

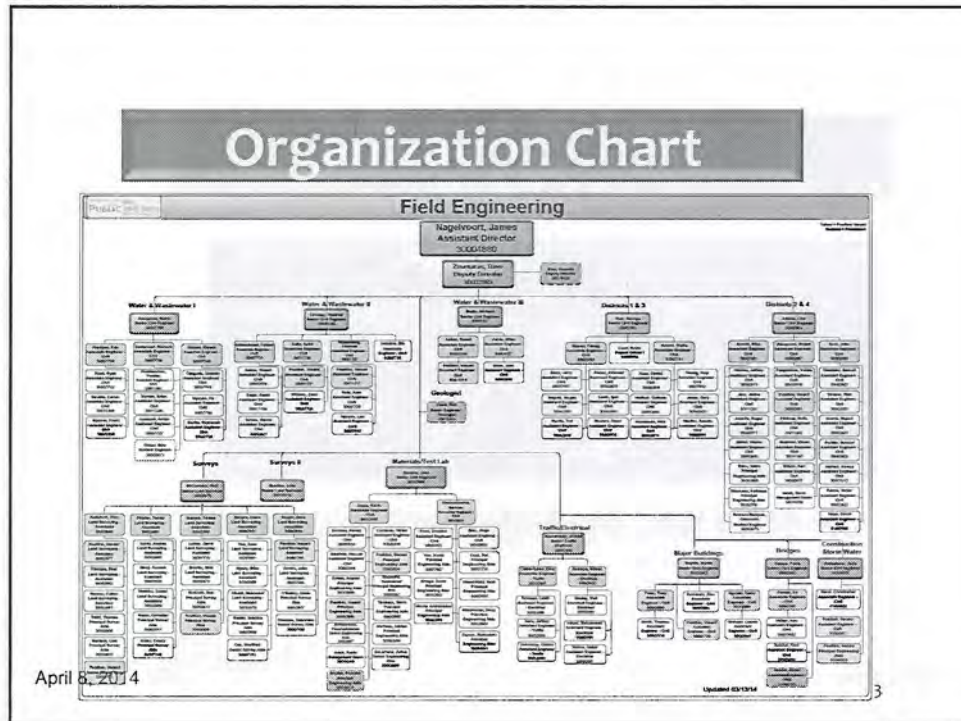


Program Highlights

- Construction
 - Capital Improvement Projects (CIP)
 - *Deferred Capital, Utilities Undergrounding, ADA, Water & Sewer*
 - Private Development
 - Turnkey/Reimbursement Projects
 - Traffic/Electrical
- Non-construction
 - Surveying
 - Geology
 - Materials Testing
 - Storm Water Compliance

April 8, 2014

2



Inspection Program Overview

Capital Improvement Projects

- **Major Buildings Section:** *Deferred Capital including Fire Stations, Recreation Centers, Libraries*
- **Bridges:** *Deferred Capital and Caltrans funded*
- **Water/Wastewater:** *Water & Sewer Group Jobs and Treatment Plants*
- **Districts:** *Storm Drain & Street Improvements, Parks, ADA*

Inspection Program Overview

Private Development & Turnkey/Reimbursement Projects

- **Bridges:** *New development bridges*
- **Major Buildings:** *Public Parks*
- **Districts:** *Subdivision Grading and Improvements, Grading and Public Improvements for Single Family and Commercial, Utilities Undergrounding*

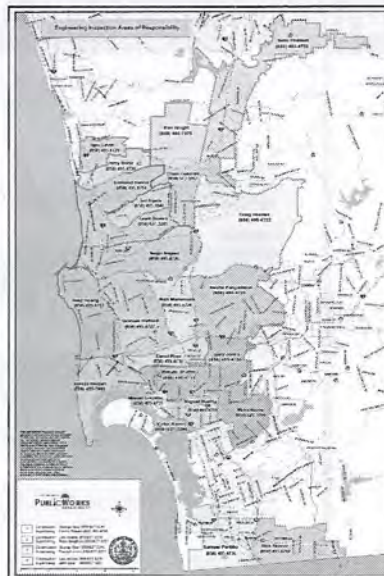
April 8, 2014

5

Districts

City of San Diego is divided into 4 areas/districts

- Northwest
- Northeast
- Central
- Downtown/South San Diego



April 8, 2014

6

RE Responsibilities

- Constructability review and CM cost and Working Days estimate
- Involvement in Design Build projects
- Pre-Pre Construction Meeting
- Pre-Construction Meeting
- Inspection/CM
- Negotiation
- Track Rain delays
- Community outreach (door hangers, complaints)
- City forces coordination
- Environmental compliance (Storm Water compliance monitoring, mitigation, re-vegetation agreements)
- Tracking Time/Personnel Charges
- Review Billings
- RFI/Submittal reviews
- Change orders/Field Orders/T&M
- Dispute Resolution
- Conflicts/Design changes
- Utility coordination
- Redlines/As-builts
- Punchlist
- Project Closeout/BOBU (Beneficial Occupancy)/Notice of Completion (NOC)
- Warranty (defects)
- Contractor ratings

April 8, 2014 7

Storm Water Compliance SOP

Standard Operating Procedure	SOP-3	Revision Revision 1 1/1/2014
Storm Water Compliance	Issue Date	12/1/2013
Author John C. [Name]	Issue Date	12/1/2013
Revised By	Issue Date	

OBJECTIVE
The goal of this SOP is to identify and review the local, state and federal storm water regulations and ensure the contractor's compliance with the submittals.

SCOPE
This procedure outlines the steps to be taken by the construction management entity to ensure that the procedures being conducted during the Management Plan (MPP) review and/or construction start-up are in compliance with the City's storm water compliance system and are in compliance with applicable regulations. This procedure is a minimum requirement at the construction management entity level. The contractor is responsible for the construction management and applicable regulatory requirements for the project.

REFERENCES
The Federal Clean Water Act (CWA) (Public Law 92-503) and the Clean Water Act (CWA) require the city to comply with the requirements of the CWA. The State of California requires storm water management under the CWA as well as the State of California's Storm Water Management Plan. The California State Water Resources Control Board and the State Department of Water Control (SWC) are the regulatory agencies for the project.

PROCEDURE
The contractor shall comply with the construction management entity's storm water compliance permit (CWA) and the State Construction General Permit (CWA) and the State Construction General Permit (CWA) and the State Construction General Permit (CWA).

DEFINITIONS
This document defines the terms used in this document. The terms are defined as follows: (a) storm water, (b) storm water management, (c) storm water management plan, (d) storm water management plan, (e) storm water management plan, (f) storm water management plan, (g) storm water management plan, (h) storm water management plan, (i) storm water management plan, (j) storm water management plan, (k) storm water management plan, (l) storm water management plan, (m) storm water management plan, (n) storm water management plan, (o) storm water management plan, (p) storm water management plan, (q) storm water management plan, (r) storm water management plan, (s) storm water management plan, (t) storm water management plan, (u) storm water management plan, (v) storm water management plan, (w) storm water management plan, (x) storm water management plan, (y) storm water management plan, (z) storm water management plan.

April 8, 2014 8

Construction BMP Inspections

Software: Microsoft Sharepoint/SDShare

- RE inputs inspection results
- Allows issuance of BMP Notices via e-mail along with photos
- Tracking of all project BMP inspections, re-inspections
- Demo

April 8, 2014

9

Training

Prior to Wet Season

- Mandatory for all RE's
- August 13/15, 2014

Industry meetings

- Agenda Item – Construction BMP's
- Feb 13, 2014

RE/Section Meetings

- March 27, 2014

Joint Meeting w/ DSD Building Inspectors

- March 26, 2014



April 8, 2014

10

Upcoming Implementation Items

- Publishing of Escalating Enforcement Policy
- Finalize WPCP template for Group Jobs
- Revise Specifications for CIP projects to include Escalating Enforcement Policy
- Bi-weekly Coordination with DSD
- Annual Report Update– correct data from Sharepoint/SDShare
- Evaluate other reporting software

April 8, 2014

11



Q & A



April 8, 2014

12