

Cost Benefit Analysis

Wet-Weather Indicator Bacteria TMDL Targets

August 31, 2016



The Basin Plan is the blueprint for water quality management and control

Designates
Beneficial
Uses



Inland Surface Waters		Hydrologic Unit Basin Number	Constituent (mg/L or as noted)														Turb NTU	Color Units	F
			TDS	Cl	SO ₄	%Na	N&P	Fe	Mn	MBAS	B	ODOR							
SAN JUAN HYDROLOGIC UNIT		901.00																	
Laguna	HA	1.10	1,000	400	500	60	#	0.3	0.05	0.5	0.75	none	20	20	1.0				
Mission Viejo	HA	1.20	500	250	250	60	#	0.3	0.05	0.5	0.75	none	20	20	1.0				
San Clemente	HA	1.30	500	250	250	60	#	0.3	0.05	0.5	0.75	none	20	20	1.0				
San Mateo Canyon	HA	1.40	500	250	250	60	#	0.3	0.05	0.5	0.75	none	20	20	1.0				
San Onofre	HA	1.50	500	250	250	60	#	0.3	0.05	0.5	0.75	none	20	20	1.0				
750	300	300	60	#	0.3	0.05	0.5	0.75	none	20	20	1.0							
500	250	250	60	#	0.3	0.05	0.5	0.75	none	20	20	1.0							
750	250	250	60	#	0.3	0.05	0.5	0.75	none	20	20	1.0							
750	250	250	60	#	0.3	0.05	0.5	0.75	none	20	20	1.0							
500	250	250	60	#	0.3	0.05	0.5	0.75	none	20	20	1.0							
500	250	250	60	#	0.3	0.05	0.5	0.75	none	20	20	1.0							
750	250	250	60	#	0.3	0.05	0.5	0.75	none	20	20	1.0							
500	250	250	60	#	0.3	0.05	0.5	0.75	none	20	20	1.0							
750	300	300	60	#	0.3	0.05	0.5	0.75	none	20	20	1.0							
750	300	300	60	#	0.3	0.05	0.5	0.75	none	20	20	1.0							
750	300	300	60	#	0.3	0.05	0.5	0.75	none	20	20	1.0							
750	300	300	60	#	0.3	0.05	0.5	0.75	none	20	20	1.0							

Establishes
Water Quality
Objectives

Establishes
Implementation
Plans

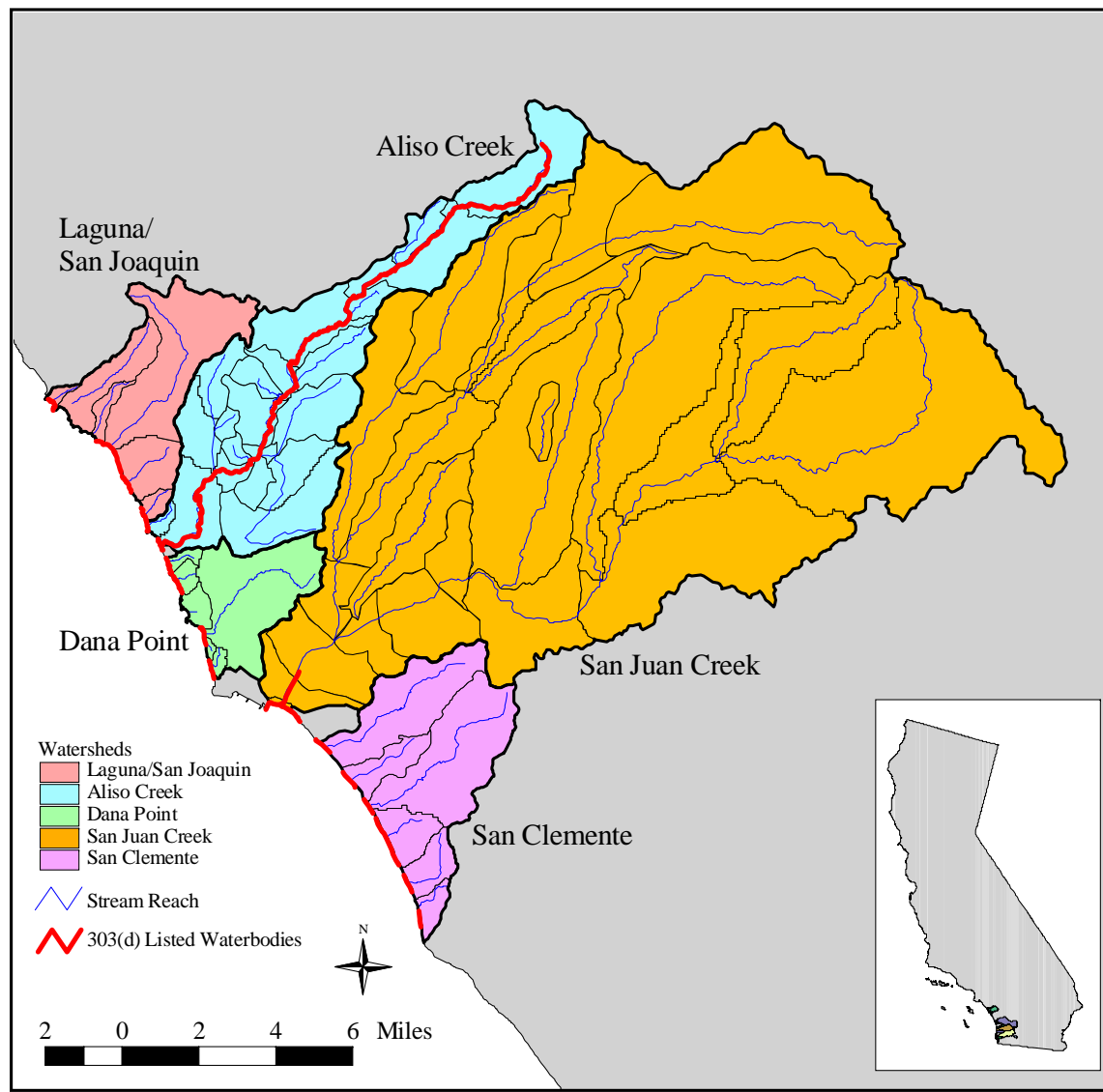
WDR's & NPDES
401 CERTS
WAIVERS
TIME SCHEDULES
ENFORCEMENT

Total Maximum Daily Loads for Indicator Bacteria, Project I – Beaches and Creeks in the San Diego Region

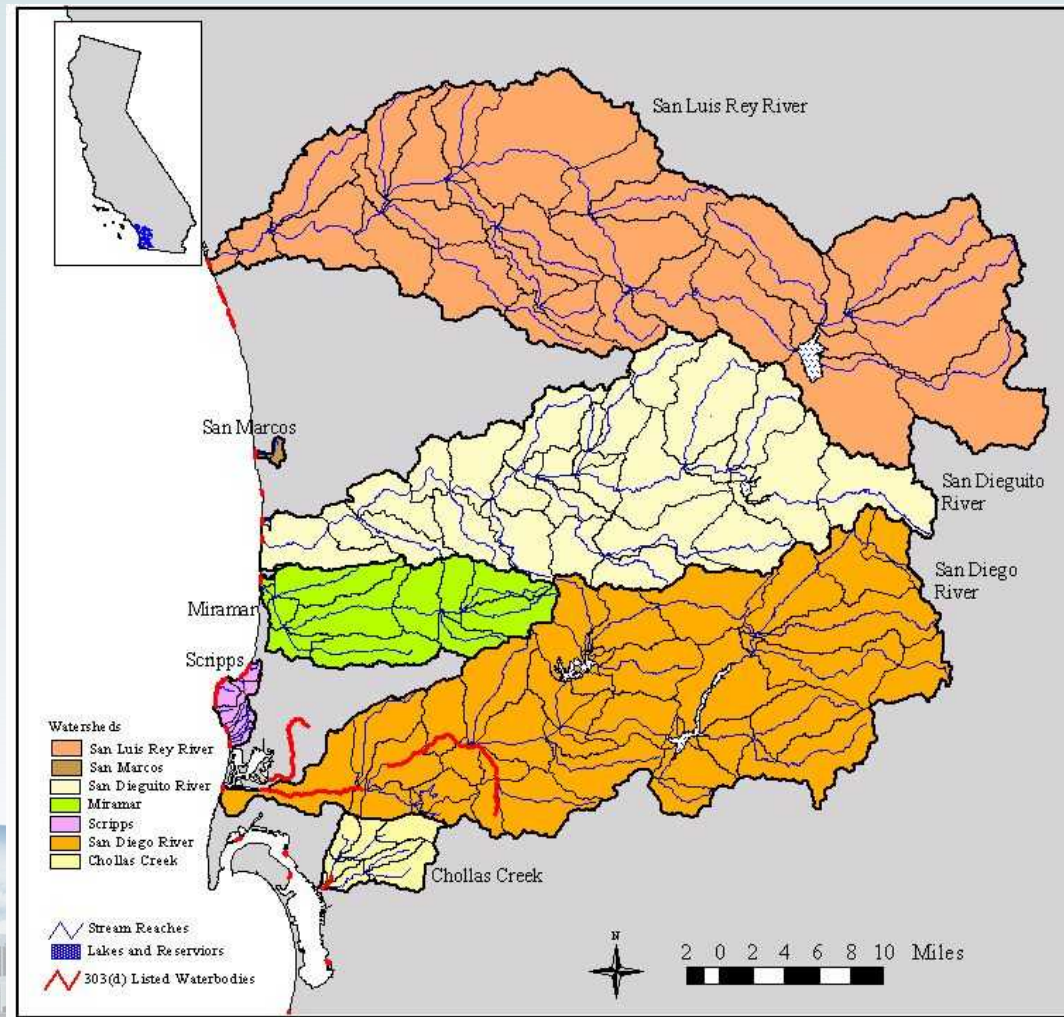
- Addresses 20 waterbodies identified as impaired for indicator bacteria
- Different allowable loads for wet and dry weather
- Implementation Plan with a monitoring component and compliance schedule



Project Scope – South Orange County

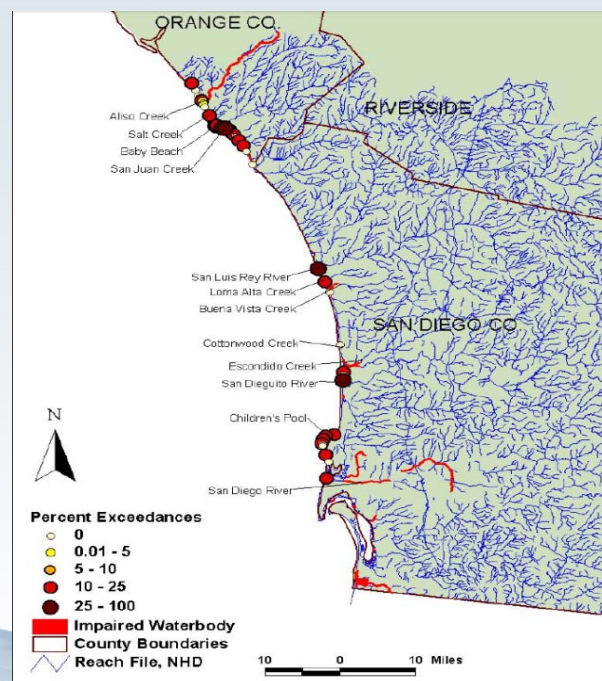


Project Scope – San Diego County



Evaluate Contact Water Recreation (REC-1) WQOs and Assessment

Recommendation: Evaluate the science that could lead to revised REC-1 water quality objectives, TMDLs and compliance determination



http://www.waterboards.ca.gov/sandiego/water_issues/programs/basin_plan/issue3.shtml