

**CALIFORNIA REGIONAL WATER QUALITY CONTROL BOARD
SAN FRANCISCO BAY REGION**

**ORDER NO. R2-2012-XXXX
RESCISSION OF WASTE DISCHARGE REQUIREMENTS FOR**

**CONTRA COSTA COUNTY SANITATION DISTRICT
BOLLINGER CANYON LEACHFIELD
CONTRA COSTA COUNTY**

The California Regional Water Quality Control Board, San Francisco Bay Region, hereinafter called the Board, finds that:

1. Discharger and Facility

The Contra Costa County Sanitation District (District) owned and operated a subsurface wastewater treatment and dispersal system known as the Bollinger Canyon Leachfield (Leachfield). The District is the discharger and the Leachfield is the discharge facility in this matter. The Leachfield extended about 1 mile along a portion of Bollinger Canyon Road in unincorporated Contra Costa County about two miles southwest of Danville. A location map is attached with this Order as Figure 1.

2. Leachfield

The Leachfield was constructed in 1967 to serve an assessment district comprised of several county-owned parcels and a private parcel. The intent was to provide temporary sewage service until municipal sanitary sewers were available. The heart of the Leachfield was a gravel-filled trench with imbedded perforated pipe to distribute septic tank effluent into the gravel and thence into subsurface native soil. The Leachfield also included several segments of watertight pipe, 13 access manholes, flow-control structures within several manholes and connections to lateral pipes for the serviced properties. Lateral pipes and septic tanks on respective properties remained as individual property owner responsibilities. A plan view map of the Leachfield facility is attached with this Order as Figure 2.

3. Regulatory History

The Leachfield has been regulated under Waste Discharge Requirements (WDRs) since the 1960s. Resolution No. 797 was adopted November 17, 1966, and later superceded by Order No. 92-007. Order No. 92-007 was adopted January 15, 1992, and is still in effect.

4. Discharge Termination and Leachfield Closure

The municipal sanitary sewers originally anticipated have not yet been built. Over time, the properties served by the Leachfield constructed their own respective independent onsite wastewater treatment and dispersal systems and were disconnected from the Leachfield. The independent onsite wastewater systems are permitted and regulated by Contra Costa County. In 1998, the District completed a project to formally abandon the Leachfield. The project included filling perforated distribution pipe with grout, excavating and backfilling with impervious material at 16 trench cross sections to prevent water migration along the trench, and securing all manholes with watertight seals. The abandonment project was completed as of September 17, 1998.

5. **Request for Rescission**

By letter of April 6, 2010, the District formally requested the Board rescind Order No. 92-007, because the facility was closed and discharges ceased more than a decade ago and the facility and discharges regulated by the Order no longer exist. The Board concurs and finds that the requirements of Order No. 92-007 are no longer applicable and there is no reason for the Order to remain in effect.

6. **California Environmental Quality Act**

This Order is not subject to the provisions of the California Environmental Quality Act because it is not a "project" as defined in Public Resources Code section 21065.

7. **Notice**

The Board has notified the Discharger and interested agencies and persons of its intent to rescind waste discharger requirements, and has provided them with an opportunity for a public hearing and an opportunity to submit their written views and recommendations.

8. **Meeting**

The Board, in a public meeting, heard and considered all comments pertaining to the discharge.

IT IS HEREBY ORDERED that Order No. 92-007 is rescinded.

I, Bruce H. Wolfe, Executive Officer, do hereby certify the foregoing is full, true, and correct copy of an Order adopted by the California Regional Water Quality Control Board, San Francisco Bay Region on _____.

Bruce H. Wolfe
Executive Officer

Attachments:

Figure 1. Bollinger Canyon Leachfield, Location Map

Figure 2. Bollinger Canyon Leachfield, Facility Map

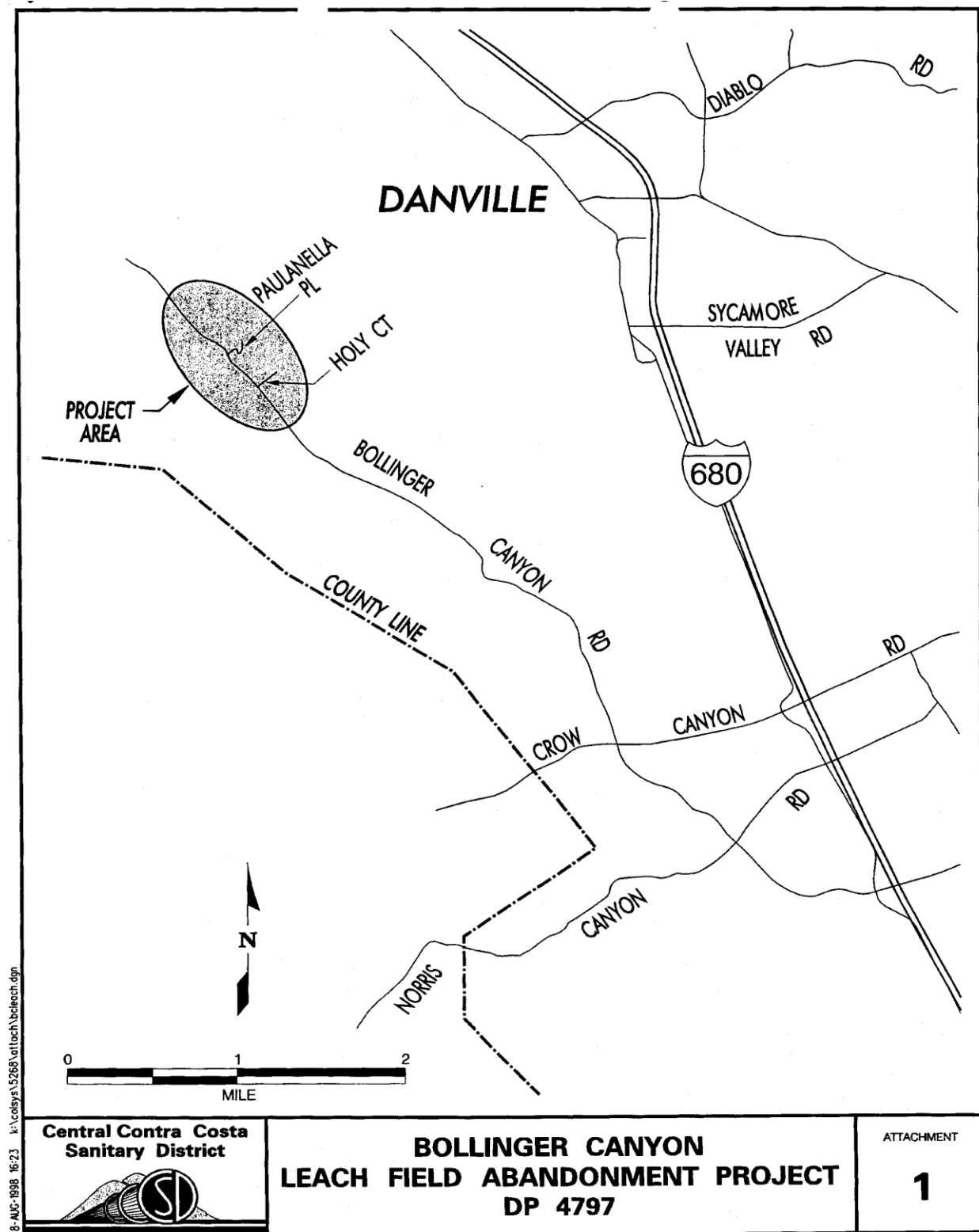


Figure 1. Bollinger Canyon Leachfield, Location Map

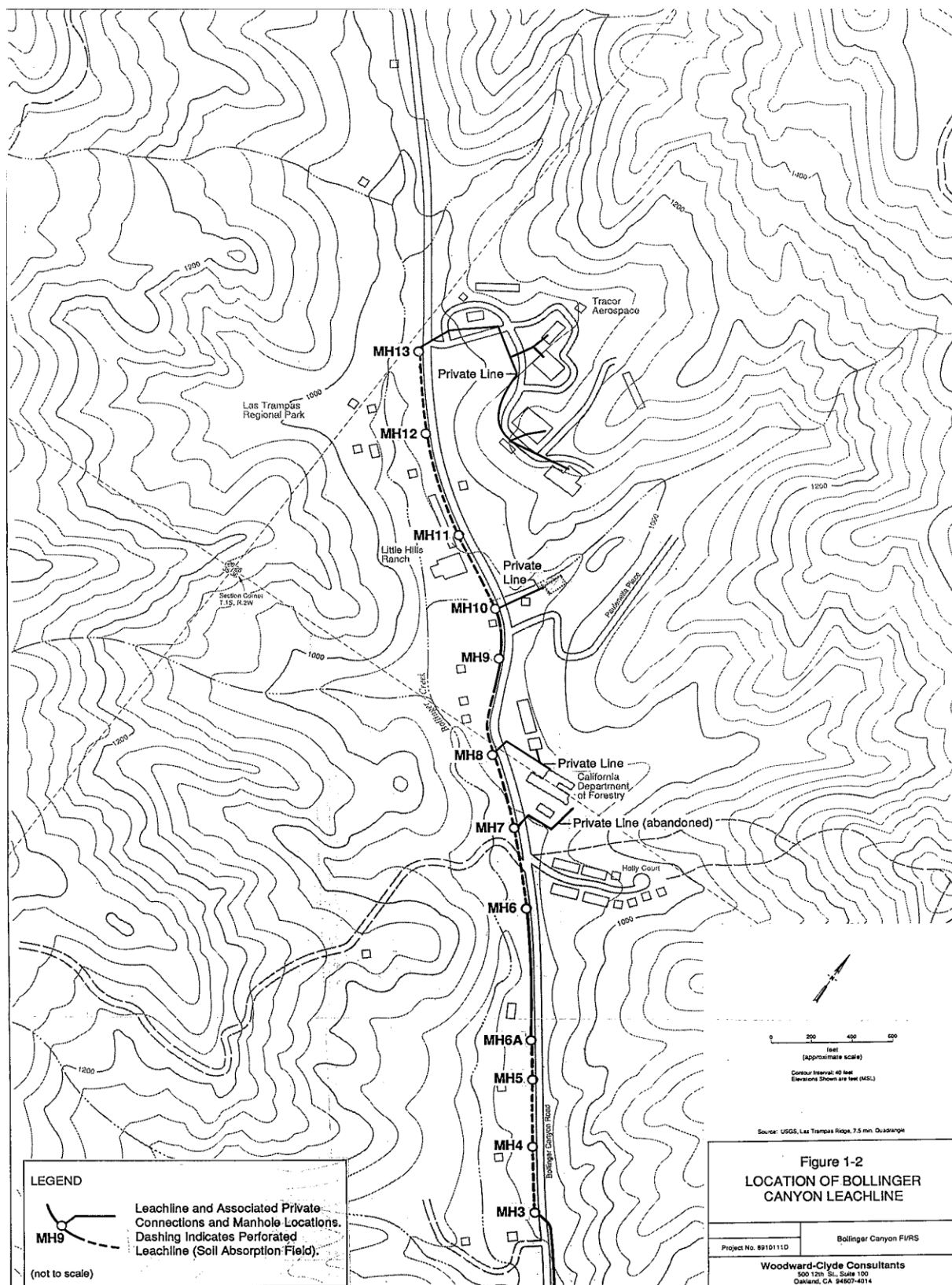


Figure 2. Bollinger Canyon Leachfield, Facility Map