

### Sonoma Valley Fires

In October 2017, the Nuns fire burned 56,556 acres and destroyed 1,355 structures in Sonoma County, making it the 6<sup>th</sup> most destructive fire in California's history<sup>1</sup>. Over 25% of the land in Sonoma Valley burned, totaling 30,033 acres<sup>2</sup>. Surface waters within and downstream of areas affected by the fires include stressed waterbodies, endangered species habitat, and the source water for drinking water systems.



Figure 1. 12:56 AM October 9, 2017. Photo obtained from October 2017 North Bay Fire Images, Sonoma Ecology Center<sup>2</sup>

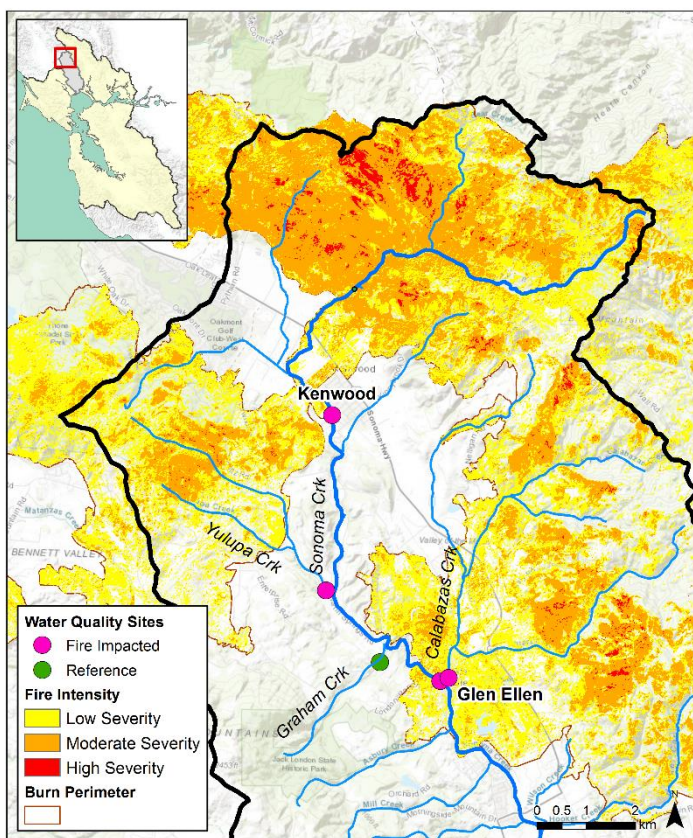


Figure 2. Post-fire water quality monitoring sites in the Sonoma Creek Watershed

### Monitoring Plan

During storm events, surface waters may be affected as rain carries pollutants away from burn areas. The Water Board assessed potential impacts to the surface waters downstream of burned areas by monitoring chemical conditions during storm events. Research shows that fire affected areas in Southern California contained increased concentrations of contaminants including nutrients (e.g. nitrates and phosphorus), polycyclic aromatic hydrocarbons (PAHs), copper, zinc, mercury, lead, and other metals<sup>3,4</sup>. Several of these pollutants, especially metals, can be detrimental to human health and toxic to aquatic life. Many pollutants often attach to suspended particles and enter the water. Therefore, high flows can transport sediment bound pollutants to creeks and downstream to the San Francisco Bay.

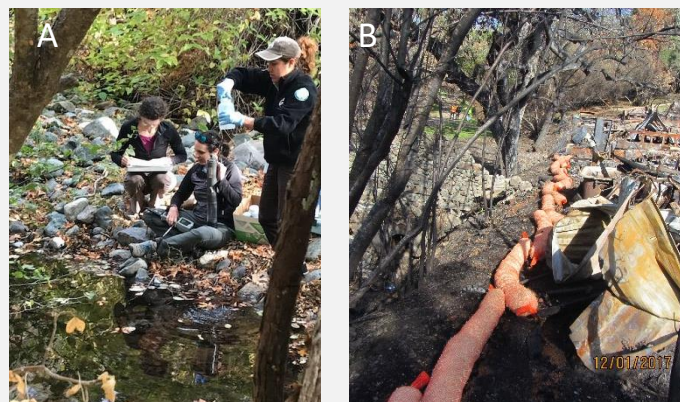


Figure 3. A) Water Board and Sonoma Ecology Center Staff collecting baseline samples at Sonoma Creek. Photo by Melissa Roberts, Sonoma Ecology Center. B) Erosion and drainage controls installed next to burned structure near creek.

The Water Board collected samples from the locations in Fig. 2 on four occasions; pre-storm (baseline), during the beginning of the first storm of the season, and again during two subsequent "qualifying" storms. A qualifying storm was defined as predicted rainfall  $\geq 1$  inch in a 24-hour period. Precipitation and flow rates for each of the three storms are depicted in Fig. 4. More information on the San Francisco Bay Water Board's post-fire monitoring plan is available [here](http://www.sfbaywaterboards.org/post-fire-monitoring-plan).

#### Work Cited

- Top 20 Most Destructive Fires, Cal Fire. [http://www.fire.ca.gov/communications/downloads/fact\\_sheets/Top20Destruction.pdf](http://www.fire.ca.gov/communications/downloads/fact_sheets/Top20Destruction.pdf). Retrieved February 5, 2018.
- Sonoma Valley Fire Recovery. <https://www.sonomaecologycenter.org/fire-recovery/>. Retrieved February 5, 2018.
- Stein, E.D., J.S. Brown, T.S. Hogue, M.P. Burke, and A. Kinoshita. 2012. Stormwater contaminant loading following wildfires. *Environmental Toxicology and Chemistry* 31: 2625–2638. doi:10.1002/etc.1994.
- Burke, M.P., T.S. Hogue, J. Barco, C. Wessel, A.Y. Kinoshita, and E.D. Stein. 2013. Dynamics of pre- and post-fire pollutant loads in an urban fringe watershed. *Environmental Monitoring and Assessment* 185:10131–10145.

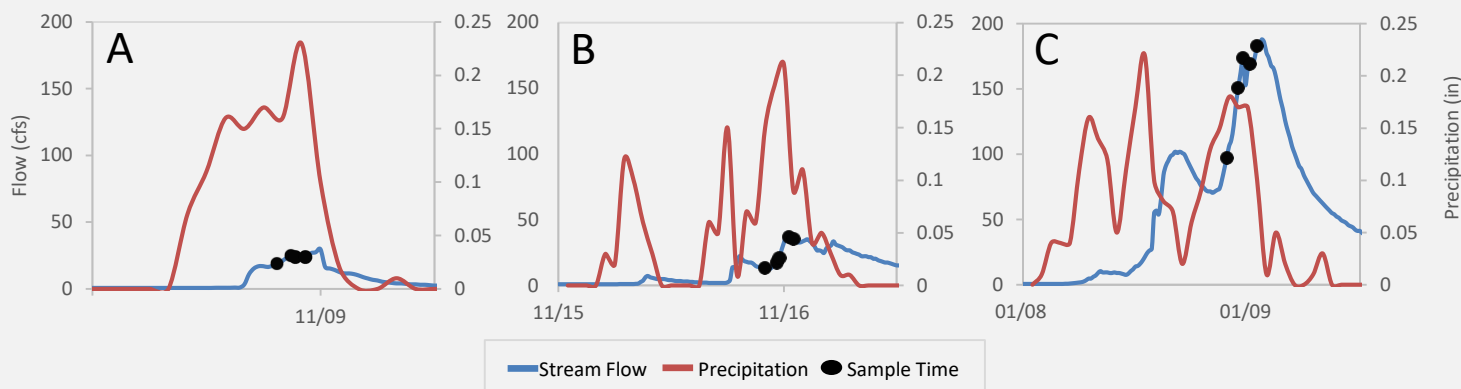


Figure 4. Precipitation, flow, and collection time for samples collected on A) Nov. 8-9, 2017 for a 1.25" storm; B) Nov. 15-16, 2017 for a 1.75" storm; C) Jan. 8-9, 2018 for a 2.65" storm. Flow data from Sonoma Creek at Kenwood, USGS Gage #11458433. Hourly precipitation data from California Irrigation Management System (CIMIS) Bennet Valley Station #158.

### Data Evaluation

Evaluation guidelines for protection of aquatic life and human health were determined from [SF Bay Regional water quality objectives](#), U.S. EPA criteria, or Regional Water Board environmental screening levels. Data for burned sites was compared to baseline data and a reference site in the watershed. The full data set is available [here](#).

- All samples were below acute toxicity thresholds.
- Nine of 576 samples exceeded chronic objectives for selenium, mercury, dissolved oxygen, or pH. Two of these exceedances occurred at the unburned reference site.
- Increased pH at Kenwood during first storm could have been a fire signal. However, no other pH exceedances were observed in this study.
- Observed increases in metals and nutrients are likely a natural increase that occurs during storms and not related to the fire.
- The small increase in metals and nutrients between baseline and storm flows was similar for burned watersheds and the reference, unburned watershed.
- In contrast, metal concentrations from burned areas in Southern California were often hundreds of times higher than burned areas in this study (Figure 5).

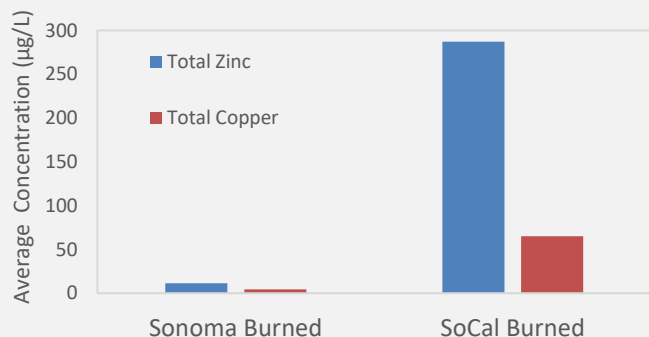
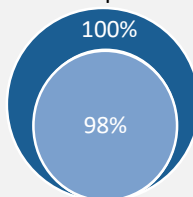


Figure 5. Comparison of metal concentrations in post-fire storm samples for Sonoma Creek and Southern California (Stein et al., 2012).

### Conclusions

- Results to date indicate water quality has not been impacted by fires.
- The 2017-2018 winter has been dry. Storm magnitude and intensity may not have been high enough to mobilize burned material.
- Slope stabilization, erosion and drainage controls, and other similar practices may have prevented burned material from entering the creeks.
  - Efforts were focused at properties in close proximity to creeks and other locations where pollutants would be readily carried to creeks via stormwater.
- 82% of burned structures within 100 ft from the stream have been assessed and stabilized by Cal Fire and Sonoma Ecology Center staff, with some funding provided by the Water Boards.



576 of 576 pollutant measurements were below acute toxicity objectives.

567 of 576 pollutant measurements were below chronic toxicity objectives.

### Future Work

Funding has been allocated for one more storm sampling event in the 2017-2018 water year. The Water Board along with state and local partners will continue to assess protection activities to ensure surface waters are not impacted. The need for future monitoring will be determined based on data from the fourth storm event and watershed recovery over the next year.

#### For more information please contact:

Rebecca Nordenholt  
(510) 622-1013

[RNordenholt@waterboards.ca.gov](mailto:RNordenholt@waterboards.ca.gov)