

SWAMP Data on BDAT Site

- The SF Bay Area SWAMP program provides water and sediment chemistry, toxicity and pathogen data as well as time series data on the BDAT website. Time series (continuous monitoring) basic water quality data is available on BDAT through a Time Series Database maintained by regional SWAMP staff and the Department of Water Resources (DWR).

-Water quality indicators that SWAMP monitors and provides on the BDAT website include:

Total coliform bacteria

Fecal coliform bacteria

E.coli

Water chemistry (metals, organics)

ELIZA for diazinon and chlorpyrifos

Hardness

TSS, TDS

TOC, DOC

Turbidity

Water Velocity (discrete measurement only)

Nutrients

Chlorophyll

Water toxicity

Sediment chemistry (metals, organics)

Grain size

Sediment toxicity

Continuous Monitoring: water temperature, dissolved oxygen, pH, conductivity

Please see the following for instructions on how to access SWAMP data on the BDAT website.

For additional information or questions about SWAMP data, please contact the SF Bay Area's SWAMP Data Manager:

Karissa Anderson, SF Bay Area SWAMP Data Manager

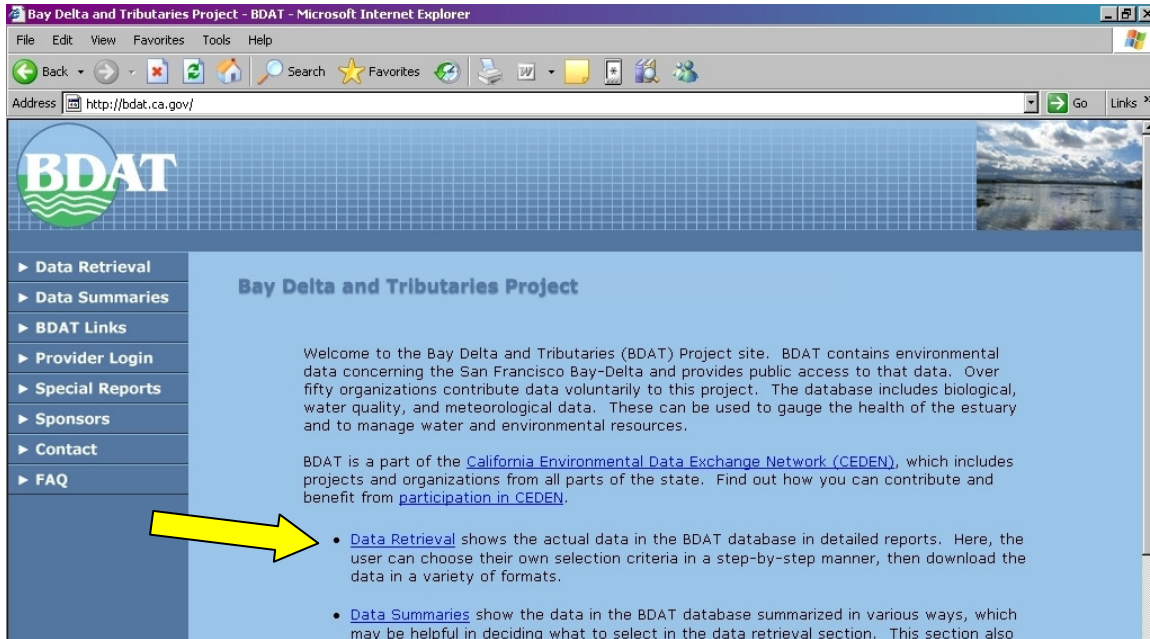
kaanderson@waterboards.ca.gov

(510) 622-2318

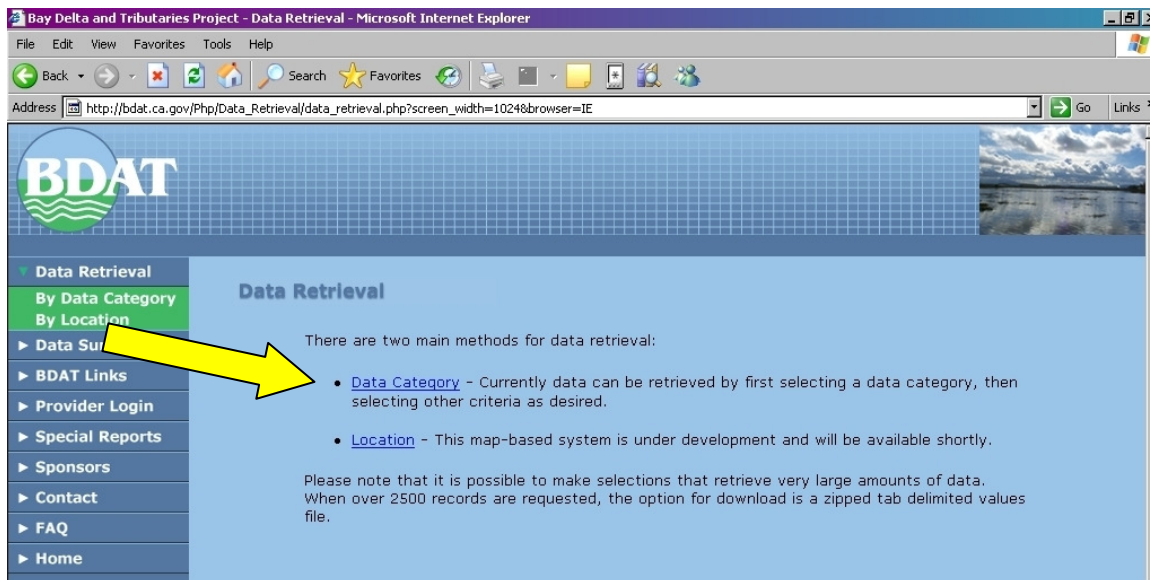
Instructions to SWAMP Data on BDAT Site (last updated May, 2007)

1) Go to BDAT website – <http://bdat.ca.gov/>

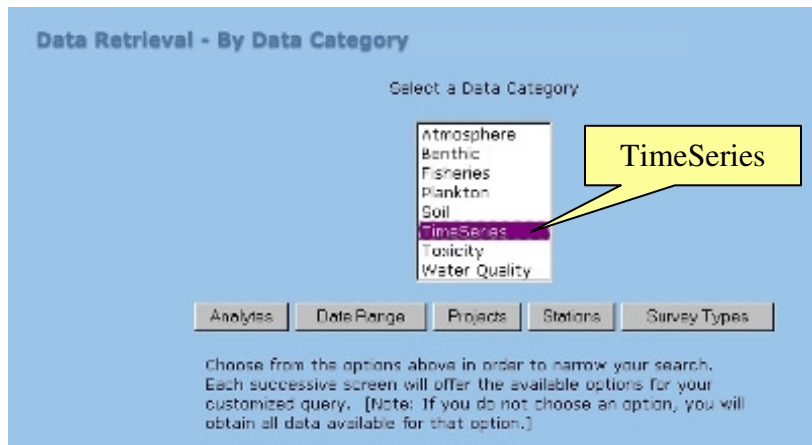
2) Click on Data Retrieval (first option).



3) Click on Data Category.



4) Select a Data Category (Time Series for this example) from the list; a series of option buttons will appear below the Data Category window.



Data Retrieval - By Data Category

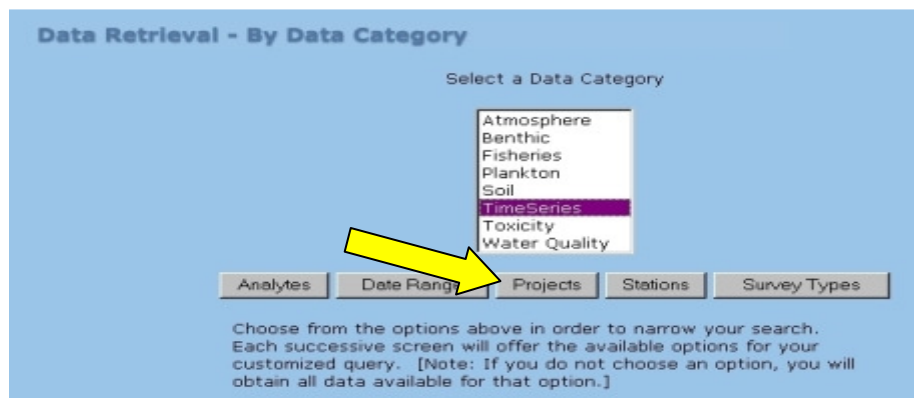
Select a Data Category

- Atmosphere
- Benthic
- Fisheries
- Plankton
- Soil
- TimeSeries**
- Toxicity
- Water Quality

Analyses Date Range Projects Stations Survey Types

Choose from the options above in order to narrow your search. Each successive screen will offer the available options for your customized query. [Note: If you do not choose an option, you will obtain all data available for that option.]

5) To select SWAMP data, click the Projects button.



Data Retrieval - By Data Category

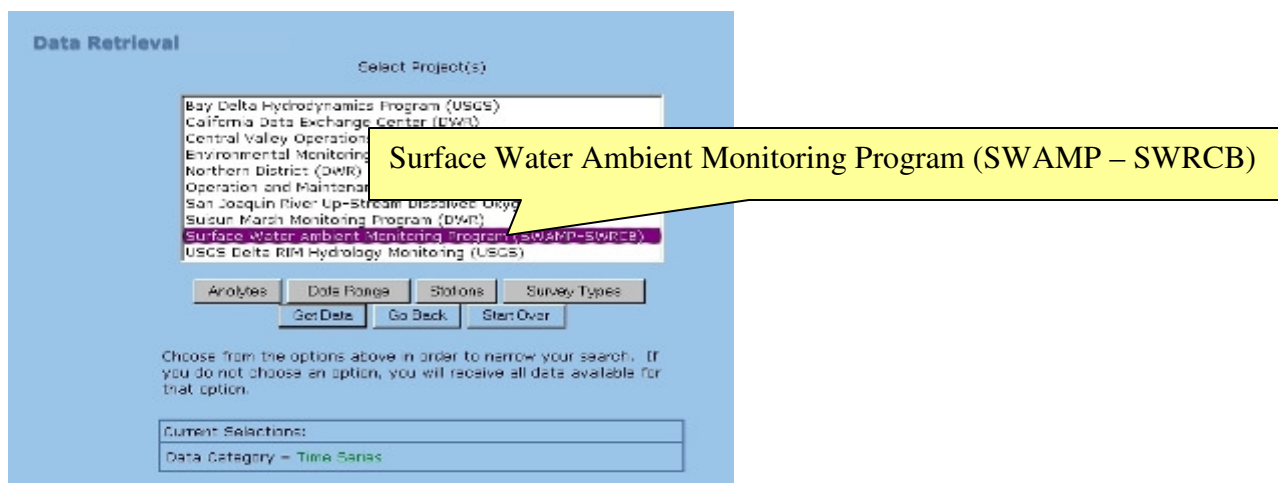
Select a Data Category

- Atmosphere
- Benthic
- Fisheries
- Plankton
- Soil
- TimeSeries**
- Toxicity
- Water Quality

Analyses Date Range Projects Stations Survey Types

Choose from the options above in order to narrow your search. Each successive screen will offer the available options for your customized query. [Note: If you do not choose an option, you will obtain all data available for that option.]

6) Select *Surface Water Ambient Monitoring Program (SWAMP – SWRCB)* from the list. A group of buttons will appear below the Projects List box.



Data Retrieval

Select Project(s)

- Bay Delta Hydrodynamics Program (USGS)
- California Data Exchange Center (CDXC)
- Central Valley Operation
- Environmental Monitoring
- Northern District (DWR)
- Operation and Maintenance
- San Joaquin River Up-Stream Dissolved Oxygen
- Suisun Marsh Monitoring Program (DWR)
- Surface Water Ambient Monitoring Program (SWAMP-SWRCB)**
- USGS Delta RRM Hydrology Monitoring (USGS)

Analyses Date Range Stations Survey Types

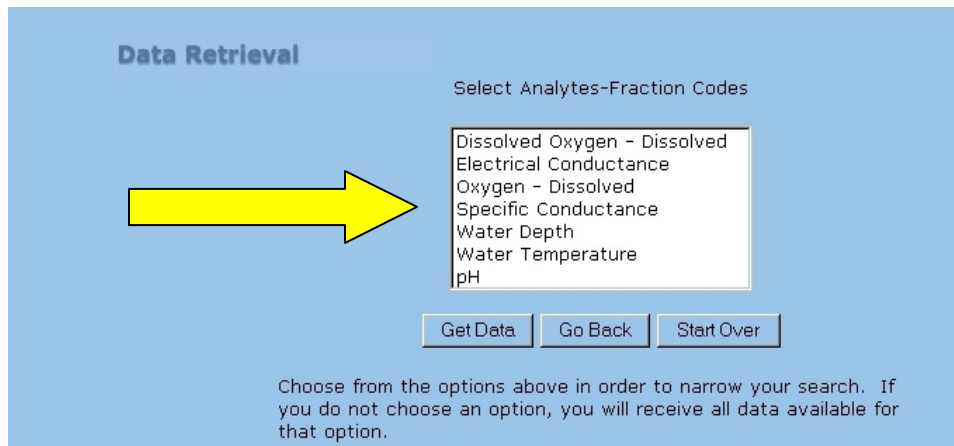
GetData Go Back Start Over

Choose from the options above in order to narrow your search. If you do not choose an option, you will receive all data available for that option.

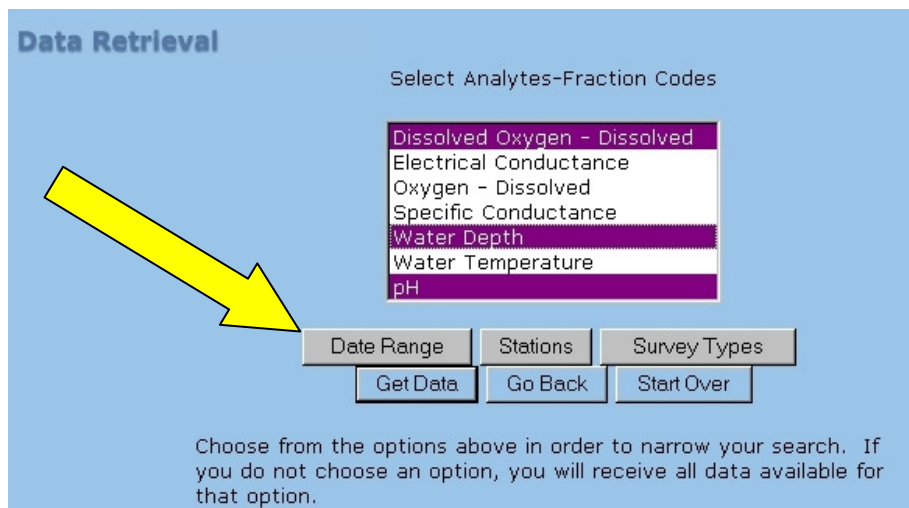
Current Selections:
Data Category = Time Series

7) Click on the Analytes button (below the list of projects window).

8) When this screen (shown below) appears, select one or more analytes; to select more than one, hold down Ctrl to highlight each analyte. If no analytes are selected at this point, the output request will contain all data available.



9) Once the analytes are selected, additional buttons will appear on the screen below the window. Click on the Date Range button (see below).



10) When the Select -Date Range screen (below) appears, use the drop-down menus to enter the dates desired (if no range is selected, all available data will be retrieved).

11) When you've specified the date range desired, click the Stations button. (**Note:** The selections made so far will appear at the bottom of the screen in the ***Current Selections*** box. If you need to undo or change a selection, click either the Go Back or Start Over button. See below.)

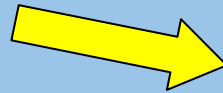
Data Retrieval

Select Date Range

(Dates shown are maximum and minimum dates available.)

From Date: Nov 21 2001

To Date: Feb 21 2006



Stations

Survey Types

Get Data

Go Back

Start Over

Current Selections:

Data Category = Time Series

Analyte = Dissolved Oxygen

Analyte = Water Depth

Analyte = pH

Project = Surface Water Ambient Monitoring Program

Current Selections Box:

Shows all specifications already selected up to this point.

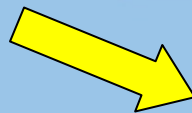
12) After clicking on the Stations button, select the desired stations from the list that appears (hold down Ctrl while selecting to highlight multiple – see below). If no stations are selected, data for all stations will be retrieved.

Data Retrieval

Select Station(s)

20th St at Road 20 (206SPA050)
Above Arroyo Seco (204ALP150)
Above Lake Temescal (203TEM090)
Above Polhemus (204SMA120)
Above SBA Zone 7 (204AMO160)
Above Strawberry Creek Park (203STW020)
Above Vulcan Bridge Zone 7 (204AMO070)
Adobe at Sartori Dr (206PET120)
Airway Blvd Exit (204ALP040)
Albina Ave (203COD080)
Alpine at Confluence (202SGR090)
Altamont-Springtown (204ALP105)
Alvarado Park (206WIL070)
Arroyo Court Park (204SMA060)
Arroyo Viejo Rec Center (204AVJ020)

[\[List station codes\]](#)



Survey Types

Get Data

Go Back

Start Over

Choose from the options above in order to narrow your search. If you do not choose an option, you will receive all data available for that option.

13) After selecting the desired stations, click the Get Data button (see above). The screen below will appear.

Data Retrieval

The number of records that will result from this set of selections is: **19194**

Select Fields:

- Project
- Agency
- Agency link
- Metadata link
- Station Code
- Station Name
- Region
- River km Index
- x coord
- y coord
- Sample Date
- Sample Time
- Sample ID
- Depth
- Analyte

☐ Display up to 2500 rows as HTML

☐ Display up to 2500 rows as Excel

☒ Download up to 65000 rows as zipped text file

☐ Email a link to download all data

[Note: Data will be unsorted.]

[Selecting multiple fields](#)

14) Select fields to be displayed. Hold down Ctrl key for multiple.

15)

14) Select the fields that you'd like to displayed in the final product from the list (hold down Ctrl key to select or un-select multiple fields).

15) Next select how you'd like to view and receive the data. The number of records that will be generated is displayed at the top of the page (see arrows above).

16) If the data is less than 2500 rows, all four options are available (see last page of instructions for a sample Excel spreadsheet). Up to 65000 rows can be downloaded directly from the website. For a larger file, the only option is to receive a link sent through email.

If you select "Email a link to download all data," a box will appear for you to enter an email address. Enter the address and click the Get Data button.

Select Fields:

- Project
- Agency
- Agency link
- Metadata link
- Station Code
- Station Name
- Region
- River km Index
- x coord
- y coord
- Sample Date
- Sample Time

☐ Display up to 2500 rows as HTML

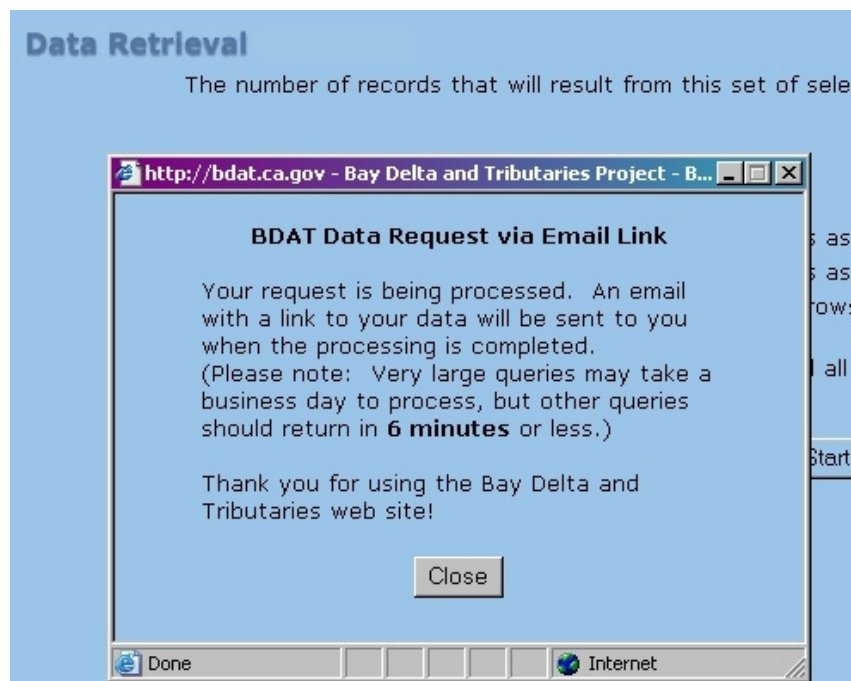
☐ Display up to 2500 rows as Excel

☐ Download up to 65000 rows as zipped text file

☒ Email a link to download all data

Email:

The following pop-up box will appear confirming the request.



17) Once a data display/format is selected, (if not selecting the email option) click the Get Data button to finalize the request.

18) For toxicity data, steps 1-17 are the same. Below is an example of what the ***Current Selections*** box (see Step 11) would look like for toxicity data.

Current Selections:	
Data Category =	Toxicity
Analyte =	Survival (%)
Date Range=	09/18/2001 to 05/27/2005
Project =	Surface Water Ambient Monitoring Program
Station =	204ALP100

19) All steps 1-17 are the same for Water Quality data. Below is an example of the ***Current Selections*** box for Water Quality data.

Current Selections:	
Data Category =	Water Quality
Analyte =	Aluminum
Analyte =	Arsenic
Analyte =	Benz(a)anthracene
Date Range=	09/18/2001 to 09/14/2005
Project =	Surface Water Ambient Monitoring Program
Station =	206SPA020

- The Excel format (see Step 15) will appear as an Excel spreadsheet (see below) which can then be opened or saved.

Example of Excel spreadsheet from BDAT site:

https://bdat.ca.gov/Php/Data_Retrieval/display_retrieval_data_by_category.php - Microsoft Internet Explorer

File Edit View Insert Format Tools Data Go To Favorites Help

Back Forward Stop Home Search Favorites

Address http://bdat.ca.gov/Php/Data_Retrieval/display_retrieval_data_by_category.php Go Links

	A	B	C	D	E	F	G	H	
	Project	Station Code	Station Name	Sample Date	Sample Time	Analyte	Result	Result Type	Qa/Qc Descrip
1	Surface Water Ambient Monitoring Program	204ALP040	Airway Blvd. Exit	1/18/2002	15:30:40	Water Temperature	9	Instant Value	Data has undeclared provider
2	Surface Water Ambient Monitoring Program	204ALP040	Airway Blvd. Exit	1/18/2002	15:45:40	Water Temperature	8.98	Instant Value	Data has undeclared provider
3	Surface Water Ambient Monitoring Program	204ALP040	Airway Blvd. Exit	1/18/2002	16:00:40	Water Temperature	8.93	Instant Value	Data has undeclared provider
4	Surface Water Ambient Monitoring Program	204ALP040	Airway Blvd. Exit	1/18/2002	16:15:40	Water Temperature	8.86	Instant Value	Data has undeclared provider
5	Surface Water Ambient Monitoring Program	204ALP040	Airway Blvd. Exit	1/18/2002	16:30:40	Water Temperature	8.76	Instant Value	Data has undeclared provider
6	Surface Water Ambient Monitoring Program	204ALP040	Airway Blvd. Exit	1/18/2002	16:45:40	Water Temperature	8.63	Instant Value	Data has undeclared provider
7	Surface Water Ambient Monitoring Program	204ALP040	Airway Blvd. Exit	1/18/2002	17:00:40	Water Temperature	8.49	Instant Value	Data has undeclared provider
8	Surface Water Ambient Monitoring Program	204ALP040	Airway Blvd. Exit	1/18/2002	17:15:40	Water Temperature	8.35	Instant Value	Data has undeclared provider
9	Surface Water Ambient Monitoring Program	204ALP040	Airway Blvd. Exit	1/18/2002	17:30:40	Water Temperature	8.21	Instant Value	Data has undeclared provider
10	Surface Water Ambient Monitoring Program	204ALP040	Airway Blvd. Exit	1/18/2002	17:45:40	Water Temperature	8.08	Instant Value	Data has undeclared provider
11	Surface Water Ambient Monitoring Program	204ALP040	Airway Blvd. Exit	1/18/2002	18:00:40	Water Temperature	7.95	Instant Value	Data has undeclared provider
12	Surface Water Ambient Monitoring Program	204ALP040	Airway Blvd. Exit	1/18/2002	18:15:40	Water Temperature	7.84	Instant Value	Data has undeclared provider
13	Surface Water Ambient Monitoring Program	204ALP040	Airway Blvd. Exit	1/18/2002	18:30:40	Water Temperature	7.73	Instant Value	Data has undeclared provider
14	Surface Water Ambient Monitoring Program	204ALP040	Airway Blvd. Exit	1/18/2002	18:45:40	Water Temperature	7.63	Instant Value	Data has undeclared provider
15	Surface Water Ambient Monitoring Program	204ALP040	Airway Blvd. Exit	1/18/2002	19:00:40	Water Temperature	7.54	Instant Value	Data has undeclared provider
16	Surface Water Ambient Monitoring Program	204ALP040	Airway Blvd. Exit	1/18/2002	19:15:40	Water Temperature	7.45	Instant Value	Data has undeclared provider
17	Surface Water Ambient Monitoring Program	204ALP040	Airway Blvd. Exit	1/18/2002					

display_retrieval_data_by_category.php

Unknown Zone

By: Karissa Anderson, SF Bay Regional SWAMP Data Manager (kaanderson@waterboards.ca.gov)