

# **ATTACHMENT E**

## **Supporting Information for Provision C.10.**

**Permittee 2009 Mapped Acreages of Trash  
Generation Rates**

**Minimum Full Trash Capture Area**

**Minimum Trash Hot Spots to be Annually  
Cleaned**

**And**

**Example Trash Generation Rate Map**

Table 1. Trash Generation Areas Mapped as of June 2015

County	Permittee	Trash Generation Category (acres) as presented in Long-Term Trash Reduction Plans				
		Low	Moderate	High	Very High	Total
Alameda	Alameda	3,729	1,496	263	10	<b>5,498</b>
Alameda	Alameda County	229,012	2,434	347	-	<b>231,793</b>
Alameda	Albany	555	305	119	12	<b>991</b>
Alameda	Berkeley	2,792	2,317	763	216	<b>6,088</b>
Alameda	Dublin	6,498	859	289	-	<b>7,645</b>
Alameda	Emeryville	68	351	171	125	<b>715</b>
Alameda	Fremont	30,166	6,465	740	-	<b>37,372</b>
Alameda	Hayward	10,745	7,008	1,395	165	<b>19,312</b>
Alameda	Livermore	11,355	3,325	534	-	<b>15,214</b>
Alameda	Newark	2,918	1,816	631	25	<b>5,391</b>
Alameda	Oakland	14,432	5,663	4,860	3,465	<b>28,420</b>
Alameda	Piedmont	977	109	1	-	<b>1,086</b>
Alameda	Pleasanton	13,172	1,416	176	-	<b>14,765</b>
Alameda	San Leandro	2,818	4,044	790	77	<b>7,729</b>
Alameda	Union City	10,234	1,660	228	-	<b>12,122</b>
Contra Costa	Concord	10,832	2,415	678	72	<b>13,997</b>
Contra Costa	Contra Costa County	174,854	3,707	1,717	118	<b>180,396</b>
Contra Costa	Danville	11,282	106	3	-	<b>11,391</b>
Contra Costa	El Cerrito	1,817	311	169	4	<b>2,301</b>
Contra Costa	Hercules	3,753	188	12	-	<b>3,952</b>
Contra Costa	Lafayette	9,252	245	1	-	<b>9,498</b>
Contra Costa	Martinez	5,004	1,777	93	1	<b>6,875</b>
Contra Costa	Moraga	5,711	92	125	-	<b>5,929</b>
Contra Costa	Orinda	7,764	232	50	-	<b>8,046</b>
Contra Costa	Pinole	2,827	136	171	-	<b>3,134</b>
Contra Costa	Pittsburg	5,824	2,892	210	132	<b>9,058</b>

County	Permittee	Trash Generation Category (acres) as presented in Long-Term Trash Reduction Plans				
		Low	Moderate	High	Very High	Total
Contra Costa	Pleasant Hill	2,873	1,080	371	22	<b>4,346</b>
Contra Costa	Richmond	10,704	4,538	1,774	269	<b>17,285</b>
Contra Costa	San Pablo	325	682	481	72	<b>1,560</b>
Contra Costa	San Ramon	10,536	1,184	-	-	<b>11,720</b>
Contra Costa	Walnut Creek	11,329	963	115	-	<b>12,407</b>
San Mateo	Atherton	2,984	230	-	-	<b>3,214</b>
San Mateo	Belmont	2,517	240	62	-	<b>2,820</b>
San Mateo	Brisbane	1,220	473	60	21	<b>1,775</b>
San Mateo	Burlingame	1,964	592	99	-	<b>2,654</b>
San Mateo	Colma	1,026	122	74	4	<b>1,225</b>
San Mateo	Daly City	2,553	1,015	407	-	<b>3,975</b>
San Mateo	East Palo Alto	97	879	356	97	<b>1,428</b>
San Mateo	Foster City	2,187	109	-	-	<b>2,296</b>
San Mateo	Half Moon Bay	3,657	187	51	-	<b>3,895</b>
San Mateo	Hillsborough	3,944	7	-	-	<b>3,950</b>
San Mateo	Menlo Park	4,811	292	3	-	<b>5,106</b>
San Mateo	Millbrae	1,512	369	79	-	<b>1,959</b>
San Mateo	Pacifica	7,321	472	104	-	<b>7,898</b>
San Mateo	Portola Valley	5,786	5	-	-	<b>5,790</b>
San Mateo	Redwood City	7,128	398	1,576	398	<b>9,502</b>
San Mateo	San Bruno	2,065	965	57	-	<b>3,088</b>
San Mateo	San Carlos	2,584	604	78	-	<b>3,265</b>
San Mateo	San Mateo	4,340	2,343	302	-	<b>6,985</b>
San Mateo	San Mateo County	172,050	272	362	-	<b>172,683</b>
San Mateo	South San Francisco	2,724	2,321	337	-	<b>5,382</b>
San Mateo	Woodside	6,989	2	-	-	<b>6,991</b>
Santa Clara	Campbell	2,335	1,133	273	-	<b>3,741</b>
Santa Clara	Cupertino	5,446	1,161	274	-	<b>6,881</b>
Santa Clara	Los Altos	3,966	10	14	-	<b>3,990</b>
Santa Clara	Los Altos Hills	5,377	6	-	-	<b>5,383</b>
Santa Clara	Los Gatos	6,275	698	-	-	<b>6,973</b>
Santa Clara	Milpitas	5,065	3,002	98	2	<b>8,167</b>

County	Permittee	Trash Generation Category (acres) as presented in Long-Term Trash Reduction Plans				
		Low	Moderate	High	Very High	Total
Santa Clara	Monte Sereno	1,018	9	-	-	<b>1,027</b>
Santa Clara	Mountain View	3,882	2,626	460	-	<b>6,968</b>
Santa Clara	Palo Alto	12,592	1,539	53	-	<b>14,184</b>
Santa Clara	San Jose	73,366	21,823	5,709	549	<b>101,447</b>
Santa Clara	Santa Clara	5,217	4,855	841	12	<b>10,925</b>
Santa Clara	Santa Clara County	380,316	678	1,123	-	<b>382,117</b>
Santa Clara	Saratoga	7,207	409	-	-	<b>7,616</b>
Santa Clara	Sunnyvale	7,082	4,075	907	11	<b>12,075</b>
Solano	Fairfield	18,578	240	57	-	<b>18,875</b>
Solano	Suisun City	2,043	12	9	-	<b>2,064</b>
Solano	Vallejo	10,980	4,314	1,948	476	<b>17,718</b>
	<b>Total</b>	<b>1,404,362</b>	<b>118,302</b>	<b>33,046</b>	<b>6,355</b>	<b>1,562,066</b>

Data Source:

Table 2. Minimum Trash Capture Area and Trash Hot Spots for  
Population Based Permittees

Data Source: <http://quake.abag.ca.gov/mitigation/pickdbh2.html> and Association of Bay Area Governments, 2005  
ABAG Land Use Existing Land Use in 2005: Report and Data for Bay Area Counties

	Population	Retail / Wholesale Commercial Acres	Minimum Full Trash Capture Catchment Area (Acres) <sup>1</sup>	# of Trash Hot Spots per 30K Population	# of Trash Hot Spots per 100 Retail / Wholesale Commercial Acres	Minimum # of Trash Hot Spots <sup>2</sup>
<b>Alameda County</b>						
San Leandro	73,402	721	<b>216</b>	2	7	4
Oakland	420,183	759	<b>228</b>	14	8	8
Dublin	46,934	377	<b>113</b>	1	3	<b>3</b>
Emeryville	9,727	69	<b>21</b>	1	1	1
Albany	16,877	95	<b>28</b>	1	1	1
Berkeley	106,697	183	<b>55</b>	3	1	3
Alameda County Unincorporated.	140,825	375	<b>112</b>	4	3	4
Alameda	75,823	402	<b>121</b>	2	4	<b>4</b>
Fremont	213,512	698	<b>209</b>	7	6	7
Hayward	149,205	726	<b>218</b>	4	7	<b>7</b>
Livermore	83,604	423	<b>127</b>	2	4	<b>4</b>
Newark	43,872	314	<b>94</b>	1	3	<b>3</b>
Piedmont	11,100	1	<del>0-30</del>	1	1	1
Pleasanton	69,388	366	<b>110</b>	2	3	<b>3</b>
Union City	73,402	183	<b>55</b>	2	1	2

<sup>1</sup> 30% of Retail / Wholesale Commercial Acres – [If population under 12,000 and Retail/Wholesale Commercial < 40 acres, Permittee is exempt from Minimum Full Trash Capture Requirement – C.10.iii.a.](#)

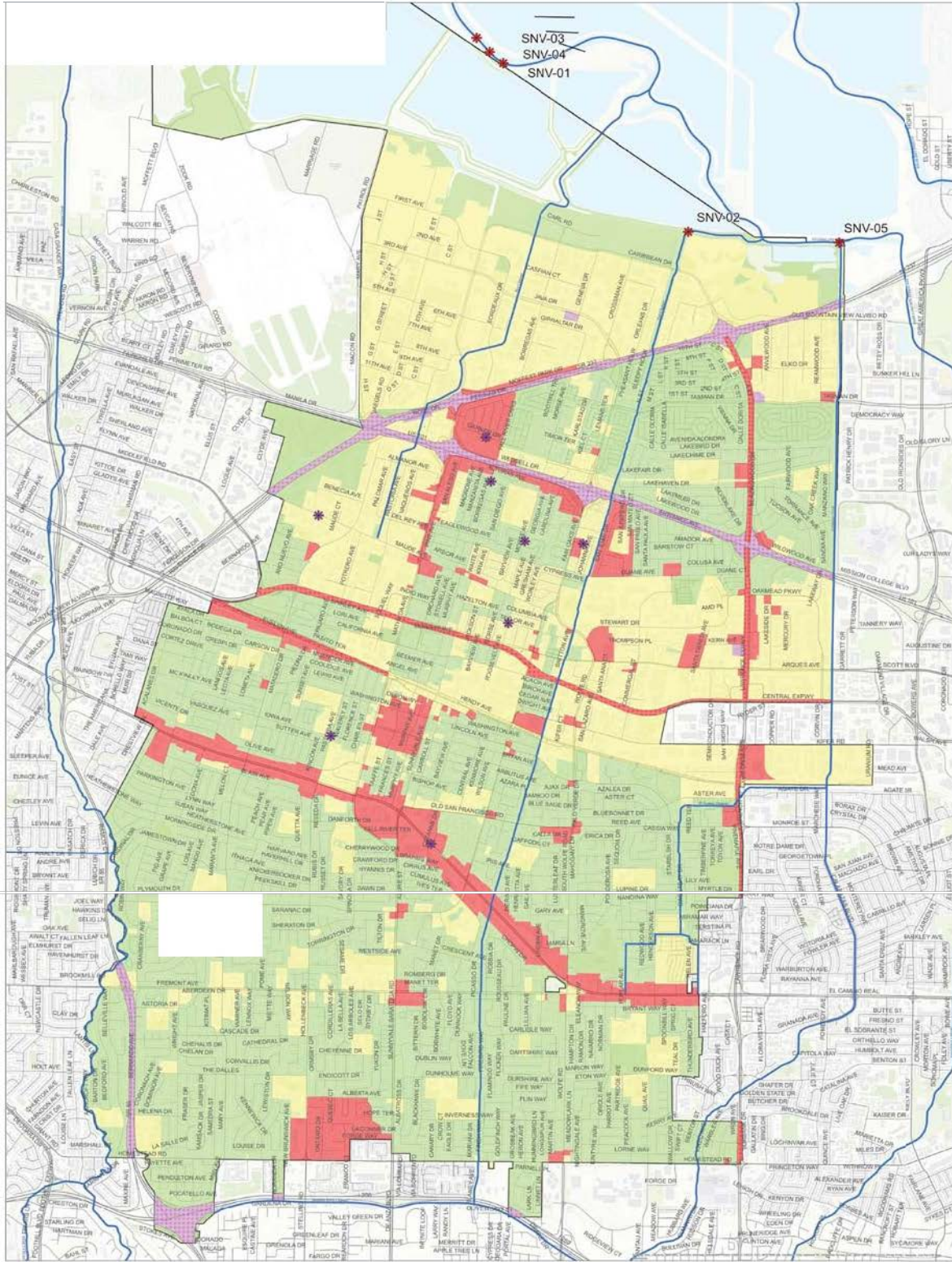
<sup>2</sup> If the hot spot # based on % commercial area is more than twice that based on population, the minimum hot spot # is double the population based #.

	Population	Retail / Wholesale Commercial Acres	Minimum Full Trash Capture Catchment Area (Acres) <sup>1</sup>	# of Trash Hot Spots per 30K Population	# of Trash Hot Spots per 100 Retail / Wholesale Commercial Acres	Minimum # of Trash Hot Spots <sup>2</sup>
<b>San Mateo County</b>						
San Mateo County Unincorporated.	65,844	71	<b>21</b>	2	1	2
Atherton	7,475	0	<b>0</b>	1	1	1
Belmont	26,078	58	<b>17</b>	1	1	1
Brisbane	3,861	16	<del>50</del>	1	1	1
Burlingame	28,867	123	<b>37</b>	1	1	1
Colma	1,613	106	<del>320</del>	1	1	1
Portola Valley	4,639	9	<del>30</del>	1	1	1
Daly City	106,361	242	<b>73</b>	3	2	3
East Palo Alto	32,897	59	<b>18</b>	1	1	1
Foster City	30,308	67	<b>20</b>	1	1	1
Half Moon Bay	13,046	49	<b>15</b>	1	1	1
Hillsborough	11,272	0	<b>0</b>	1	1	1
Menlo Park	31,490	83	<b>25</b>	1	1	1
Millbrae	21,387	68	<b>20</b>	1	1	1
Pacifica	39,616	100	<b>30</b>	1	1	1
Redwood City	77,269	309	<b>93</b>	2	3	<b>3</b>
San Bruno	43,444	137	<b>41</b>	1	1	1
San Carlos	28,857	129	<b>39</b>	1	1	1
San Mateo	95,776	275	<b>82</b>	3	2	3
South San Francisco	63,744	195	<b>58</b>	2	1	2
Woodside	5,625	9	<del>30</del>	1	1	1

	Population	Retail / Wholesale Commercial Acres	Minimum Full Trash Capture Catchment Area (Acres) <sup>1</sup>	# of Trash Hot Spots per 30K Population	# of Trash Hot Spots per 100 Retail / Wholesale Commercial Acres	Minimum # of Trash Hot Spots <sup>2</sup>
<b>Contra Costa County</b>						
Contra Costa County Unincorporated.	<del>473,573</del> <u>152,744</u>	524	<b>157</b>	5	5	5
Concord	123,776	1016	<b>305</b>	4	10	8
Walnut Creek	65,306	329	<b>99</b>	2	3	<b>3</b>
Clayton	10,784	21	<del>6</del> <u>(0)</u>	1	1	1
Danville	42,629	134	<b>40</b>	1	1	1
El Cerrito	23,320	105	<b>32</b>	1	1	1
Hercules	24,324	37	<b>11</b>	1	1	1
Lafayette	23,962	68	<b>20</b>	1	1	1
Martinez	36,144	142	<b>43</b>	1	1	1
Moraga	16,138	108	<b>32</b>	1	1	1
Orinda	17,542	24	<b>7</b>	1	1	1
Pinole	19,193	140	<b>42</b>	1	1	1
Pittsburg	63,652	520	<b>156</b>	2	5	4
Pleasant Hill	33,377	219	<b>66</b>	1	2	<b>2</b>
Richmond	103,577	391	<b>117</b>	3	3	3
San Pablo	31,190	131	<b>39</b>	1	1	1
San Ramon	59,002	274	<b>82</b>	1	2	<b>2</b>
<b>Santa Clara County</b>						
Santa Clara County Unincorporated	99,122	270	<del>81</del> <u>47</u>	3	3	3
<u>Campbell</u>	<u>38,889</u>	<u>137</u>	<u>41</u>	<u>1</u>	<u>1</u>	<u>1</u>
Cupertino	55,551	213	<b>64</b>	2	2	2
Los Altos	28,291	65	<b>20</b>	1	1	1

	Population	Retail / Wholesale Commercial Acres	Minimum Full Trash Capture Catchment Area (Acres) <sup>1</sup>	# of Trash Hot Spots per 30K Population	# of Trash Hot Spots per 100 Retail / Wholesale Commercial Acres	Minimum # of Trash Hot Spots <sup>2</sup>
Los Altos Hills	8,837	0	0	1	1	1
Los Gatos	30,296	163	49	1	1	1
Milpitas	69,419	457	137	2	4	4
Monte Sereno	3,579	0	0	1	1	1
Mountain View	73,932	375	112	2	3	3
Santa Clara	115,503	560	168	3	5	5
Saratoga	31,592	41	12	1	1	1
San Jose	989,496	2983	895	32	29	32
Sunnyvale	137,538	548	164	3	5	5
Palo Alto	63,367	282	84	2	2	2
<b>Solano County</b>						
Vallejo	120,416	559	168	4	5	5
Fairfield	106,142	486	146	3	4	4
Suisun	28,031	75	22	1	1	1
<b>Totals</b>	4,930,339	19057	5718	165	184	349





October 16, 2015  
November 10, 2015

Attachment E-9