

State of California
California Regional Water Quality Control Board
Santa Ana Region

June 9, 2023

STAFF REPORT

ITEM: *

SUBJECT: City of Highland, Line A Storm Drain and Bledsoe Gulch Outfall Reconstruction, Highland, San Bernardino County, Order R8-2023-0039

DISCUSSION:

Under federal Clean Water Act (CWA) section 401, applicants for a federal permit or license for any activity that may result in a discharge to waters of the United States (WOTUS) must obtain a state Water Quality Certification (Certification) that the proposed activity will comply with state water quality standards.

Most Certifications are issued in connection with U.S. Army Corps of Engineers (USACE) CWA section 404 permits for dredged and fill material discharges. The State Water Resources Control Board (State Water Board) and Regional Water Quality Control Boards (Regional Water Boards) (collectively, Water Boards) administer the Certification program in accordance with the requirements of California Code of Regulations, title 23, section 3830 et seq. Since November 2003, Certifications have been issued by the Executive Officer accompanied by authorization to discharge in accordance with State Water Board Order 2003-0017-DWQ, ("Statewide General Waste Discharge Requirements for Dredged or Fill Discharges that Have Received State Water Quality Certification").

Due to the scope of the federal regulatory definition of WOTUS, not all discharge activities are considered discharges of dredged or fill material to WOTUS, and therefore do not require Certification under CWA section 401. However, to the extent that discharges of dredged and fill material are to non-federal waters of the state, the Water Boards retain their permitting authority under the Porter-Cologne Water Quality Control Act, Water Code section 13000 et seq. Permitting occurs in the form of Waste Discharge Requirements (WDRs) prescribed pursuant to Water Code section 13263, subdivision (a).

The Order prescribes WDRs for the discharge of fill material to waters of the state for the Line A Storm Drain and Bledsoe Gulch Outfall Reconstruction (Project) for the City

of Highland (Discharger). The purpose of the Project is to reduce and eliminate the head erosion of an outfall structure causing slope failure.

On March 15, 2023, the USACE issued an Approved Jurisdictional Determination confirming that no WOTUS were present within the Project boundaries.

The existing Line A outfall drainage is a 290-foot-long, 48-inch underground reinforced concrete pipe (RCP) that was installed in 2002 to convey tributary drainage within the East Highlands Ranch development subdivision. Over time, the slope embankment area surrounding the RCP outlet has been severely eroded by high flow velocity flows coming from the RCP outfall, resulting in significant erosion along Bledsoe Gulch/Creek's side slopes and invert which is threatening the backyards of adjacent homes that are situated along the west embankment.

The Project would replace the existing 48-inch RCP with a new 48-inch RCP within the same alignment but at depths up to approximately 15 feet below ground surface which would promote positive flow and reduce erosion within Bledsoe Gulch. The Project would add approximately 100 feet of new storm drain RCP along the existing invert of the drainage and the head, toe, and side slopes would be regraded to mitigate the overly steep invert.

Project activities would impact an existing storm drain, including the Line A outfall drainage, head, and side slopes, as well as the outlet into Bledsoe Gulch. The reconstruction and installation of Project features would occur within the already existing footprint of the Line A storm drain. Maps showing the Project location are found in Attachment A of the tentative Order R8-2023-0039.

The construction and installation of Project features would permanently impact approximately 0.23 acre within the same footprint of the Line A drainage outfall and Bledsoe Gulch through grading and addition of grouted or concrete lined features.

No compensatory mitigation is required for the Project because the Project consists of necessary repairs of head erosion at an existing facility and would enhance water quality by preventing erosion and debris from washing downstream. The Project pipe replacement would prohibit debris and vegetation from the adjacent hillside to the Line A outfall drainage from eroding and washing downstream into Bledsoe Gulch.

For further information on the proposed Project, please contact Santa Ana Water Board staff Kyle Fructuoso at Kyle.Fructuoso@waterboards.ca.gov.

RECOMMENDATION:

Adopt Order R8-2023-0039 as presented.

CALIFORNIA REGIONAL WATER QUALITY CONTROL BOARD
SANTA ANA REGION

3737 Main Street, Suite 500
Riverside, CA 92501-3348
(951) 782-4130

[Regional Board Website](https://www.waterboards.ca.gov/santaana) (<https://www.waterboards.ca.gov/santaana>)

**[TENTATIVE] WASTE DISCHARGE REQUIREMENTS ORDER
R8-2023-0039**

ORDER INFORMATION

Status:	TENTATIVE
Program:	Dredged or Fill Material Program
Discharger(s):	City of Highland
Project:	Line A Storm Drain and Bledsoe Gulch Outfall Reconstruction
County:	San Bernardino County
CIWQS WDID:	362022-20
Prior Order(s):	(none)

CERTIFICATION

I, JAYNE JOY, Executive Officer, hereby certify that the following is a full, true, and correct copy of the order adopted by the California Regional Water Quality Control Board, Santa Ana Region, on June 9, 2023.

JAYNE JOY
Executive Officer

TABLE OF CONTENTS

Updating Table of Contents: Right-click the content below and select “update field” to update the Table of Contents below. It does not matter whether you “update entire table” or “update page numbers only.” The Table of Contents is set up to only include certain custom heading styles. This way, the heading for this section (i.e., the Table of Contents) won’t needlessly appear in the content below. Same goes for the headings on the cover sheet. For reference, styles are labeled as “TOC” and “Non-TOC.”

Findings	1
Introduction	1
Project Description and Discharge Characteristics	2
Regulatory Considerations.....	4
CEQA and Public Participation	5
Requirements	6
A. Discharge Specifications	6
B. Discharge Prohibitions.....	7
C. Provisions	7
Attachment A—MAPS	12
Attachment B—REPORTS and NOTIFICATIONS	15
Attachment C—SIGNATORY REQUIREMENTS	22

CALIFORNIA REGIONAL WATER QUALITY CONTROL BOARD
SANTA ANA BASIN REGION

ORDER R8-2023-0039

WASTE DISCHARGE REQUIREMENTS
FOR
DISCHARGES OF DREDGED OR FILL MATERIAL TO WATERS OF THE STATE
LINE A STORM DRAIN AND BLEDSOE GULCH OUTFALL RECONSTRUCTION
SAN BERNARDINO COUNTY

FINDINGS

The Santa Ana Regional Water Quality Control Board (Santa Ana Water Board) hereby finds as follows:

Introduction

1. This Order prescribes Waste Discharge Requirements (WDRs) for the Line A Storm Drain and Bledsoe Gulch Outfall Reconstruction (Project) for the City of Highland (Discharger).
2. Receiving waters and groundwater potentially impacted by this Project are protected in accordance with the operative Water Quality Control Plan for the Santa Ana River Basin (Basin Plan) and other plans and policies. The Basin Plan includes water quality standards, which consist of existing and potential beneficial uses of waters of the state, water quality objectives to protect those uses, and the state and federal antidegradation policies.
3. The Santa Ana Water Board has the authority to regulate the discharge of dredged and fill materials through the issuance of WDRs pursuant to Water Code section 13263. The Santa Ana Water Board has determined that WDRs are necessary to adequately address the Project's potential impacts on the beneficial uses of waters of the state.
4. This Order regulates the discharge of fill material to waters of the state.
5. This Order is issued in compliance with the State Water Resources Control Board's (State Water Board) *State Policy for Water Quality Control: State Wetland Definition and Procedures for Discharges of Dredged or Fill Material to Waters of the State* (Dredge and Fill Procedures), which was adopted on April 2, 2019, became on effective May 28, 2020, and was revised April 6, 2021.
6. On August 2, 2022, Compass Consulting Enterprises, Inc., on behalf of the Discharger, submitted an Application for Discharges of Dredged or Fill Material to

Waters of the State (Application) for the Project, which was assigned Santa Ana Water Board WDID No. 362022-20.

7. A fee of \$2,417.00 as received on September 28, 2022. The fee amount was determined as per California Code of Regulations, title 23 (Title 23), sections 3833(b)(3) and 2200(a)(3) and was calculated as A - Fill and Excavation Discharge (fee code 84) with the dredge and fill fee calculator. An additional fee of \$2,538.00 based on total Project impacts was received on April 10, 2023.
8. The Application was considered complete on September 2, 2022.
9. On March 15, 2023, the USACE issued an Approved Jurisdictional Determination, which determined that WOTUS were not present within the Project boundaries.

Project Description and Discharge Characteristics

10. The purpose of the Project is to reduce and eliminate the head erosion of an outfall structure causing slope failure.
11. The existing Line A outfall drainage is a 290-foot-long, 48-inch underground reinforced concrete pipe (RCP) that was installed in 2002 to convey tributary drainage within the East Highlands Ranch development subdivision. Over time, the slope embankment area surrounding the RCP outlet has been severely eroded by high flow velocity flows coming from the RCP outfall, resulting in significant erosion along Bledsoe Gulch/Creek's side slopes and invert which is threatening the backyards of adjacent homes that are situated along the west embankment.
12. The Project would replace the existing 48-inch RCP with a new 48-inch RCP within the same alignment but at depths up to approximately 15 feet below ground surface which would discharge flows safely onto a riprap pad and reduce erosion and protect against scour within Bledsoe Gulch. Additionally, the Project would add approximately 100 feet of new storm drain RCP along the existing bottom of the drainage and the head, toe, and side slopes would be regraded to mitigate the overly steep invert.
13. A portion of the Project's proposed activities, including removal of existing RCP, excavation, installation of new RCP and drainage inlet or riser, and construction of an 18-inch and 36-inch inlet would occur within upland area outside of waters of the state.
14. Project activities anticipated to impact the Line A outfall drainage and Bledsoe Gulch include the removal of the existing 0.03-acre of grouted riprap pad

CITY OF HIGHLAND

LINE A STORM DRAIN AND BLEDSOE GULCH OUTFALL RECONSTRUCTION

headwall and riprap, installation of new RCP, regrading of approximately 0.23-acre of side slopes, and the installation and construction of a 0.02-acre newly grouted rip rap apron and headwall. Once the RCP is installed, approximately 386 cubic yards of clean fill material would be compacted on top of the new pipe along the slopes to reduce the steep grade. A new 12-foot-wide approximately 178-foot-long asphalt paved access road would then be constructed on top of the new fill. A 6-inch asphalt dike would also be constructed along the west side of the access road to collect and control surface flows and convey them onto the apron. Additionally, an approximately 106-foot-long concrete swale, approximately 1 foot deep would be constructed along the newly graded slope to drain flows back into Bledsoe Gulch at the new rip rap pad at the creek base. The newly constructed swale would outlet at the new rip rap pad at the creek base and act as the first line of defense for the sheet flow from the top of the slope that is currently causing the slope erosion.

15. The 0.48-acre Project site is located in the city of Highland behind an orange grove along 6892 Cloverhill Drive in San Bernardino County. The Project's Assessor's Parcel Numbers are 0288-251-83 (34°07'41.23" N/ -117°10'13.84" W). Maps showing the Project location are found in Attachment A of this Order.
16. Project activities would impact an existing storm drain, including the Line A outfall drainage, head, and side slopes, as well as the outlet into Bledsoe Gulch. Reconstruction and installation of Project features would occur within the already existing footprint of the Line A storm drain.
17. The construction and installation of Project features would permanently impact approximately 0.23 acre within the same footprint of the Line A drainage outfall and Bledsoe Gulch through grading and addition of grouted or concrete lined features.
18. Bledsoe Gulch has the following designated intermittent beneficial uses: Municipal and Domestic Supply (MUN), Groundwater Recharge (GWR), Water Contact Recreation (REC1), Non-contact Water Recreation (REC2), Cold Freshwater Habitat (COLD), and Wildlife habitat (WILD).
19. The Santa Ana Water Board is not requiring compensatory mitigation for permanent impacts to waters of the state because the Project consists of necessary repair of head erosion at an existing facility and would enhance water quality by preventing erosion and debris from washing downstream. The Project pipe replacement would prohibit debris and vegetation from the adjacent hillside to the Line A outfall drainage from eroding and washing downstream into Bledsoe Gulch.

20. Pursuant to requirements by the California Department of Fish and Wildlife (CDFW), the Discharger plans to restore no less than 0.40 acre of streambed and riparian habitat within or immediately adjacent to the Project area. The Discharger would prepare a Habitat Mitigation and Monitoring Plan. The Discharger proposes to restore native vegetation, reflective of the surrounding associated riparian-scrub habitat, to establish within a minimum of 0.40-acre along the bed, channel, upper banks, and between the un-grouted riprap apron of Bledsoe Gulch.

Regulatory Considerations

21. This Order is adopted pursuant to Water Code section 13263, subdivision (a), which provides that the Santa Ana Water Board may, after any necessary hearing, prescribe requirements (WDRs) as to the nature of any proposed discharge with relation to the conditions existing in the disposal area or receiving waters upon, or into which, the discharge is made or proposed. The WDRs must implement any relevant water quality control plans that have been adopted and take into consideration the beneficial uses to be protected, the water quality objectives reasonably required for that purpose, other waste discharges, the need to prevent nuisance, and the provisions of Water Code section 13241.
22. This Order is also adopted pursuant to Water Code section 13267, subdivision (b)(1) which authorizes the Santa Ana Water Board to require technical and monitoring program reports, submitted under penalty of perjury, from persons discharging or proposing to discharge waste within the Santa Ana Region, in connection with the issuance of WDRs. This Order incorporates requirements for water quality monitoring and Project reporting, which are necessary to ensure that the discharge of dredged and fill material complies with WDRs and is protective of the environment. In accordance with Water Code section 13267, the burden, including costs, of generating these reports bears a reasonable relationship to the need for the report and the benefits to be obtained from them.
23. The Santa Ana Water Board has considered the federal and state antidegradation policies (State Water Board Resolution No. 68-16 and 40 C.F.R. § 131.12) and finds that the discharge permitted under this Order is consistent with those policies. This Order requires that impacts to waters of the state be mitigated through avoidance and minimization to the maximum extent practicable. Further, the Project would enhance water quality in receiving waters by preventing erosion and debris from washing downstream.
24. This Order is subject to modification or revocation upon administrative or judicial review, including review and amendment pursuant to Water Code section 13330 and California Code of Regulations, title 23, section 2050 et seq. Additionally, the Santa Ana Water Board reserves the right to suspend, cancel, or modify and

reissue this Order, after providing notice to the Discharger, if the Santa Ana Water Board determines that the Project fails to comply with any of the conditions of this Order; or when necessary to implement any new or revised water quality standards and implementation plans adopted or approved pursuant to the Porter-Cologne Water Quality Control Act (Wat. Code, § 13000 et seq.).

25. The provisions of this Order are severable and, if any provision of this Order or the application of any provisions of this Order to any circumstance is held invalid, the application of such provision to other circumstances and the remainder of this Order shall not be affected thereby.
26. The filing of a request by the Discharger for modification, revocation and re-issuance, or termination of this Order or a notification of planned changes or anticipated noncompliance does not stay any requirements of this Order.
27. The requirements prescribed herein do not authorize the commission of any act causing injury to the property of another, nor protect the Discharger from liabilities under federal, state, or local laws, nor guarantee the Discharger a capacity right in the receiving waters.
28. This Order does not convey any property rights of any sort, or any exclusive privilege. The ability to discharge waste is a privilege, not a right; nothing in this Order shall create a vested right to continue any discharges authorized herein, which are subject to rescission or modification. (Wat. Code, § 13263, subd. (g).)

CEQA and Public Participation

29. On March 15, 2022, the Discharger, as the lead agency under the California Environmental Protection Act (CEQA; Public Resources Code, § 21000 et seq.) conducted an Initial Study and adopted an Initial Study (IS)/Mitigated Negative Declaration (MND) for the Project (State Clearinghouse 2022020105). The lead agency filed a Notice of Determination with the Clerk of Board Supervisors of San Bernardino County on March 16, 2022.
30. The Santa Ana Water Board is a responsible agency under CEQA for the purposes of issuing this Order. As a responsible agency, the Santa Ana Water Board is “responsible for considering only the effects of those activities involved in a project which it is required by law to carry out or approve.” (Public Resources Code, § 21002.1, subd. (d).) In approving this Order, the Santa Ana Water Board has considered the IS/MND adopted by the Discharger and subsequent information provided by the Discharger. More specifically, the Santa Ana Water Board considered those sections of the IS/MND pertaining to impacts to water quality. The Santa Ana Water Board finds that compliance with the mitigation measures of the IS/MND and conditions in this Order will reduce potentially

adverse impacts to water quality to a less than significant level and protect beneficial uses of receiving waters.

31. The Santa Ana Water Board has notified the Discharger and other interested agencies and persons of its intent to prescribe WDRs for the discharge and has provided them with an opportunity for public hearing to submit comments. There are no known tribal and/or disadvantaged communities in the vicinity of the Project site.
32. The Santa Ana Water Board, in a public meeting, heard and considered all comments pertaining to the WDRs for the discharge.

REQUIREMENTS

IT IS HEREBY ORDERED, pursuant to Water Code sections 13263 and 13267, that the Discharger shall comply with the following:

A. Discharge Specifications

1. No activities associated with the Project shall cause or threaten to cause a condition of nuisance, contamination or pollution as defined in Water Code section 13050.
2. The groundwater in the vicinity of the Project shall not be degraded as a result of the Project activities or placement of fill material for the Project.
3. The Discharger must, as applicable, obtain coverage under and comply with the State Water Board's NPDES *General Permit for Storm Water Discharges Associated with Construction and Land Disturbance Activities* (Order 2009-0009-DWQ, as amended by Order 2012-0006-DWQ; NPDES No. CAS000002) and any subsequent amendments (Construction General Permit). If the Project construction activities do not require coverage under the Construction General Permit, the Discharger must develop and implement a runoff management plan or equivalent construction best management practices (BMP) plan, to prevent the discharge of sediment and other pollutants during construction activities.
4. The Discharger shall comply with the local regulations associated with the Santa Ana Water Board's Municipal Stormwater Permit issued to San Bernardino County and co-permittees under NPDES No. CAS618036 and WDRs Order R8-2010-0036, and subsequent iterations thereof.
5. If construction dewatering discharges, including temporary stream diversions, are necessary to carry out the Project, the Discharger shall enroll and comply with Santa Ana Water Board Order R8-2020-0006,

General Waste Discharge Requirements for Discharges to Surface Waters that Pose an Insignificant (De Minimis) Threat to Water Quality.

6. The discharge of fill materials shall be limited to the placement of native fill and "inert waste", as defined in California Code of Regulations, title 27, section 20230. The discharge of fill material other than native soil is prohibited.
7. Construction and post-construction BMPs shall be implemented.

B. Discharge Prohibitions

1. Permanent impacts to waters of the state from the Project shall not exceed quantities identified in Finding 17.
2. The discharge of waste, in a manner or location other than as described in the Application or findings of this Order, or for which valid WDRs are not in force, is prohibited.
3. Except for authorized fill discharges to waters of the state, the direct discharge of wastes, including rubbish, refuse, bark, sawdust, or other solid or liquid wastes, into channels, surface waters, or any place where they would contact or be eventually transported to surface waters, including flood plains, is prohibited.
4. The discharge of oil or other floating materials from any activity in quantities sufficient to cause deleterious bottom deposits, turbidity, or discoloration in surface waters is prohibited.
5. The discharge of silt, sand, clay, or other earthen materials from any activity in quantities sufficient to cause deleterious bottom deposits, turbidity, or discoloration in surface waters is prohibited.
6. Discharges to surface waters of wastes or pollutants that are not authorized by this Order or regulated by a separate permit are prohibited.
7. During the grading and filling operation, there shall be no onsite fueling, lubrication, changing of oil or other equipment fluids and their filters, or any other maintenance or storage of construction equipment within or next to drainage areas or other surface runoff conveyances.

C. Provisions

1. The Discharger shall maintain a copy of this Order at the Project site so that it is always available to site operating personnel. Key operating personnel shall be familiar with the Order's content.

CITY OF HIGHLAND

LINE A STORM DRAIN AND BLEDSOE GULCH OUTFALL RECONSTRUCTION

2. The Discharger shall take all reasonable steps to minimize or prevent any discharge that has a reasonable likelihood of adversely affecting human health or the environment.
3. This Order is not transferable to any person without written approval by the Santa Ana Water Board's Executive Officer. Prior to any change in ownership, the Discharger shall notify the Santa Ana Water Board's Executive Officer in writing at least 30 days in advance. The notice must include a written transfer agreement between the existing owner and the new owner. At a minimum, the transfer agreement must contain a specific date for transfer of responsibility for compliance with this Order and an acknowledgment that the new owner or operator is liable for compliance with this Order from the date of transfer. The Santa Ana Water Board may require modification or revocation and reissuance of this Order to change the name of the Discharger and incorporate other requirements as may be necessary under the Water Code.
4. The Discharger shall submit an annual report each year on the anniversary of this Order. Annual reporting shall continue until a *Notice of Project Complete Letter* is issued to the Discharger. The contents of the annual report shall include a construction summary, Project status and schedule (including ground disturbance, site clearing and grubbing, and site construction), and the implementation status of Best Management Practices during the active discharge period. If the Project has not started, the Discharger shall provide an estimated start date and reasons for delay.
5. The Discharger shall submit a *Commencement of Construction Report* at least seven days prior to start of initial ground disturbance activities.
6. The Discharger shall submit a *Request for Notice of Completion of Discharges Letter* following completion of active Project construction activities, including any required restoration and Discharger-responsible mitigation. This request shall be submitted to Santa Ana Water Board staff within 30 days following completion of all Project construction activities. Upon acceptance of the request, Santa Ana Water Board staff will issue to the Discharger a *Notice of Completion of Discharges Letter*, which will end the active discharge period and, if appropriate, associated annual fees.
7. The Discharger shall submit a *Request for Notice of Project Complete Letter* when construction and any required post-construction monitoring is complete and no further Project activities will occur. This request shall be submitted to Santa Ana Water Board staff within 30 days following completion of all Project activities. Upon approval of the request, Santa Ana Water Board staff will issue to the Discharger a *Notice of Project*

Complete Letter and prepare a draft order terminating this Order for approval by the Santa Ana Water Board. The *Notice of Project Complete Letter* will end the post-discharge monitoring period, and either the expiration or Board approval of the termination of this Order will end the associated annual fees.

8. The Discharger shall retain records of all monitoring information, including all calibration and maintenance records, copies of all reports required by this Order, and records of all data used to complete the application for this Order. Records shall be maintained for a minimum of five years from the date of the sample, measurement, report, or application. Records may be maintained electronically. This period may be extended during the course of any unresolved enforcement action or litigation regarding this discharge or when requested by the Santa Ana Water Board.
9. The Discharger shall report any noncompliance that may endanger human health or the environment. Information shall be provided orally to the Santa Ana Water Board office and the Office of Emergency Services within twenty-four (24) hours of when the Discharger becomes aware of the incident. If noncompliance occurs outside of business hours, the Discharger shall leave a message on the Santa Ana Water Board's office voicemail. A written report shall also be provided within five business days of the time the Discharger becomes aware of the incident. The written report shall contain a description of the noncompliance and its cause, the period of noncompliance, the anticipated time to achieve full compliance, and the steps taken or planned to reduce, eliminate, and prevent recurrence of the noncompliance. All other forms of noncompliance shall be reported with the Discharger's next scheduled Monitoring Report, or earlier if requested by the Executive Officer.
10. Before initiating a new discharge or making a material change in the character, location, or volume of an existing discharge, the Discharger shall report all pertinent information in writing to the Santa Ana Water Board, and if required by the Santa Ana Water Board, obtain revised requirements before any modifications are implemented.
11. The Discharger shall allow the Santa Ana Water Board, or an authorized representative, upon presentation of credentials and other documents as may be required by law to:
 - a. Enter premises where a regulated facility or activity is located or conducted, or where records are kept under the requirements of this Order;

CITY OF HIGHLAND

LINE A STORM DRAIN AND BLEDSOE GULCH OUTFALL RECONSTRUCTION

- b. Access and copy any records that are kept under the requirements of this Order;
 - c. Inspect any facility, equipment (including monitoring and control equipment), practices, or operations regulated or required under this Order; and
 - d. Photograph, sample, or monitor for the purpose of assuring compliance with this Order or as otherwise authorized by the Water Code.
12. This Order becomes effective on the date of adoption by the Santa Ana Water Board.
13. This Order will remain valid for five years from the date of its adoption. The Discharger must file a new dredge and fill application in accordance with California Code of Regulations, title 23, division 3, chapter 9 no later than 180 days in advance of this expiration date. The application, with filing fee, will be discussed between the Discharger and Santa Ana Water Board staff regarding any need for additional information and changes in fees prior to the issuance of new WDRs.

LIST OF ATTACHMENTS

Attachment A—MAPS

Attachment B—REPORTS and NOTIFICATIONS

Attachment C—SIGNATORY REQUIREMENTS

ENFORCEMENT

The Santa Ana Water Board reserves the right to take any enforcement action authorized by law. Accordingly, failure to timely comply with any provisions of this Order may subject the Discharger to enforcement action. Such actions include, but are not limited to, the assessment of administrative civil liability pursuant to Water Code sections 13323, 13268, and 13350, a Time Schedule Order (TSO) issued pursuant to Water Code sections 13300 and 13308, or referral to the California Attorney General for recovery of judicial civil liability. Failure to comply with this Order may result in the assessment of administrative civil liability of up to \$10,000 per violation, per day, depending on the violation.

ADMINISTRATIVE REVIEW

Any person aggrieved by this Santa Ana Water Board action may petition the State Water Board for review in accordance with Water Code section 13320 and California Code of Regulations, title 23, section 2050 et seq. To be timely, the petition must be received by the State Water Board by 5:00 pm on the 30th day after the date of this Order; if the 30th day falls on a Saturday, Sunday or state holiday, the petition must be received by the State Water Board by 5:00 pm on the next business day. The law and regulations applicable to filing petitions are available on the [State Water Board website](http://www.waterboards.ca.gov/public_notices/petitions/water_quality) (http://www.waterboards.ca.gov/public_notices/petitions/water_quality). Copies will also be provided upon request.

ATTACHMENT A—MAPS

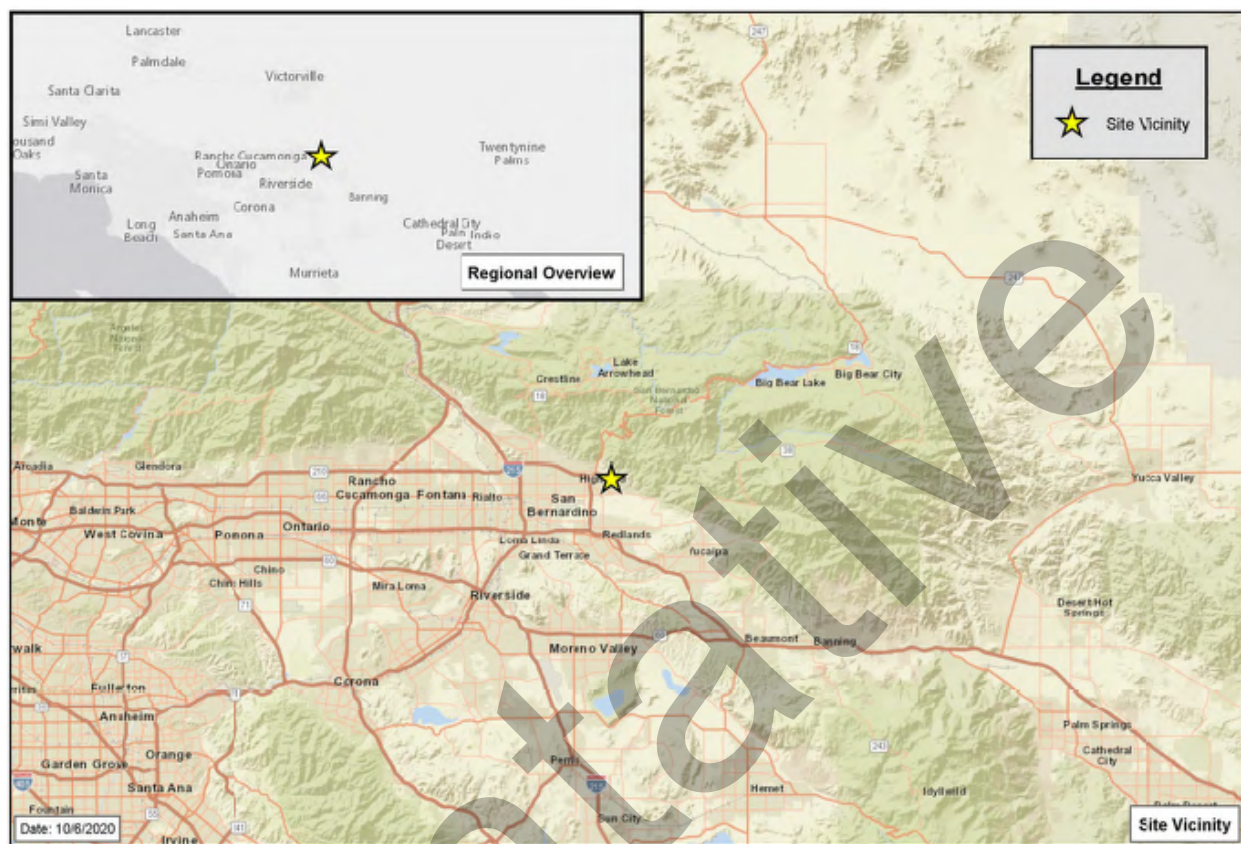




Figure 2. Map of Project Area Limits

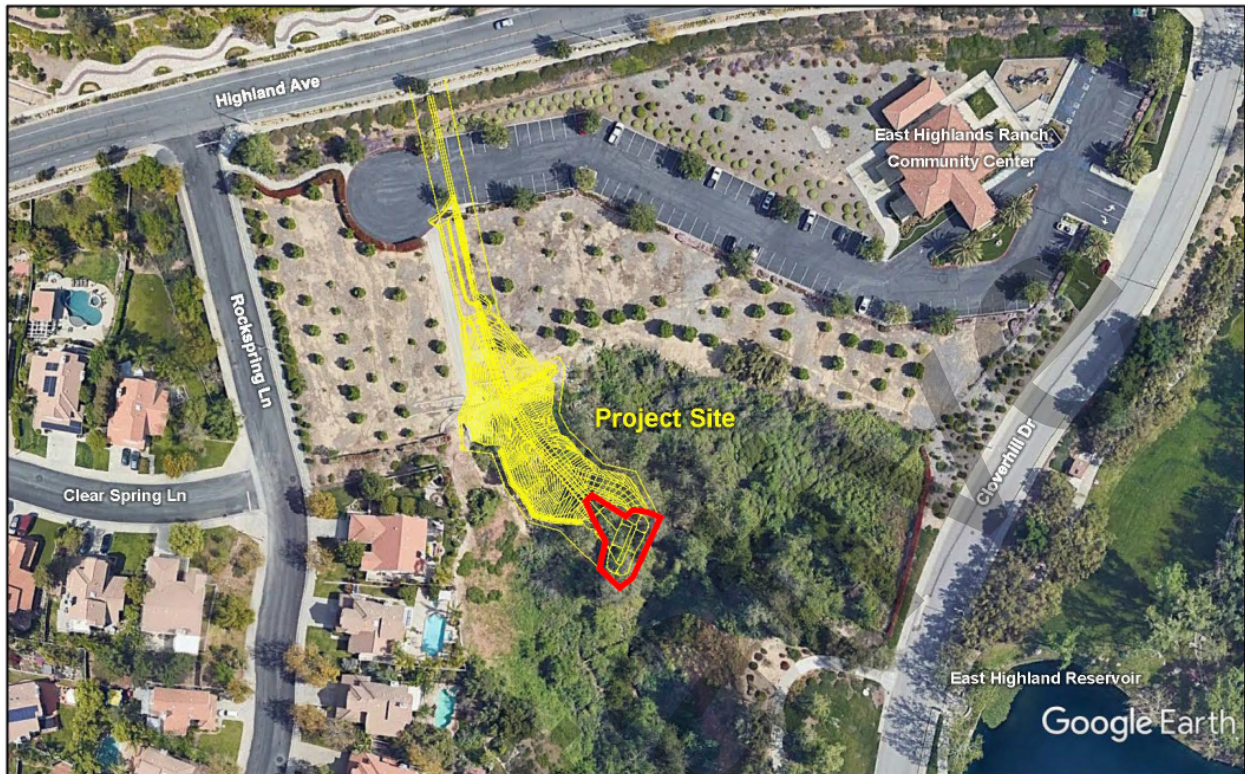


Figure 3. Limits of Waters of the State in Red Area

ATTACHMENT B—REPORTS AND NOTIFICATIONS

Copies of this Form

In order to identify your Project, it is necessary to include a copy of the Project-specific Report and Notification Cover Sheet below with your report (see below). Please retain a copy for your records.

Report Submittal Instructions

- 1) Check the box on the *Report and Notification Cover Sheet* next to the report or notification you are submitting.
 - a) Part A (Annual Report): Submitted annually from the anniversary of the Project effective date until a *Notice of Project Complete Letter* is issued.
 - b) Part B (Project Status Notifications): Used to notify the Santa Ana Water Board of the status of the Project schedule that may affect Project billing.
- 2) Sign the *Report and Notification Cover Sheet* and attach all information requested for the Report Type.
- 3) Electronic Report Submittal Instructions:
 - a) Submit signed *Report and Notification Cover Sheet* and required information via email to: RB8-401Reporting@waterboards.ca.gov
 - b) Include in the subject line of the email: Order R8-2023-0039 and Report Type Name
 - c) Additionally, electronically submit Annual Progress Reports using the State Water Board's California Integrated Water Quality System (CIWQS) Program [website](#). The CIWQS website will provide additional information for report submittal in the event there will be a planned service interruption for electronic submittal.

Definition of Reporting Terms

- 1) **Active Discharge Period:** The active discharge period begins with the effective date of this Order and ends on the date that the Discharger receives a *Notice of Completion of Discharges Letter* or, if no post-construction monitoring is required, a *Notice of Project Complete Letter*. The Active Discharge Period includes all elements of the Project, including site construction and restoration, and any Discharger-responsible compensatory mitigation construction.
- 2) **Request for Notice of Completion of Discharges Letter:** This request by the Discharger to the Santa Ana Water Board staff pertains to projects that have post

Definition of Reporting Terms
<p>construction monitoring requirements (e.g., if site restoration were required to be monitored for five (5) years following construction). Santa Ana Water Board staff will review the request and send a <i>Completion of Discharges Letter</i> to the Discharger upon approval. This letter will initiate the post-discharge monitoring period and a change in fees from the annual active discharge fee to the annual post-discharge monitoring fee.</p> <p>3) <u>Request for Notice of Project Complete Letter:</u> This request by the Discharger to the Santa Ana Water Board staff pertains to projects that either have completed post-construction monitoring and achieved performance standards, or have no post-construction monitoring requirements and no further Project activities are planned. Santa Ana Water Board staff will review the request and send a <i>Project Complete Letter</i> to the Discharger upon approval. Termination of annual invoicing of fees will correspond with the expiration or termination by Board action of this Order.</p>

Map/Photo Documentation Information
<p>When submitting maps or photos, please use the following formats.</p> <p>1. <u>Map Format Information:</u> Preferred map formats of at least 1:24000 (1" = 2000') detail (listed in order of preference):</p> <ul style="list-style-type: none"> • GIS shapefiles: The shapefiles shall depict the boundaries of all Project areas and extent of aquatic resources impacted. Each shape should be attributed with the extent/type of aquatic resources impacted. Features and boundaries should be accurate to within 33 feet (10 meters). Identify datum/projection used and, if possible, provide map with a North American Datum of 1983 (NAD83) in the California Teale Albers projection in feet. • Google KML files saved from Google Maps: My Maps or Google Earth Pro. Maps shall show the boundaries of all Project areas and extent/type of aquatic resources impacted. Include URL(s) of maps. If this format is used, include a spreadsheet with the object ID and attributed with the extent/type of aquatic resources impacted. • Other electronic format (CAD or illustration format) that provides a context for location (inclusion of landmarks, known structures, geographic coordinates, or USGS DRG or DOQQ). Maps shall show the boundaries of all Project areas and extent/type of aquatic resources impacted. If this format is used, include a spreadsheet with the object ID and attributed with the extent/type of aquatic resources impacted.

CITY OF HIGHLAND

LINE A STORM DRAIN AND BLEDSOE GULCH OUTFALL RECONSTRUCTION

ATTACHMENT B—REPORTS AND NOTIFICATIONS

Map/Photo Documentation Information
<ul style="list-style-type: none"> Aquatic resource maps marked on paper USGS 7.5-minute topographic maps or Digital Orthophoto Quarter Quads (DOQQ) printouts. Maps shall show the boundaries of all Project areas and extent/type of aquatic resources impacted. If this format is used, include a spreadsheet with the object ID and attributed with the extent/type of aquatic resources impacted.
<p>2. Photo-Documentation: Include a unique identifier, date stamp, written description of photo details, and latitude/longitude (in decimal degrees) or map indicating location of photo. Successive photos should be taken from the same vantage point to compare pre/post-construction conditions.</p>

Report and Notification Cover Sheet
Project: Line A Storm Drain and Bledsoe Gulch Outfall Reconstruction
Discharger: City of Highland
Order No.: R8-2023-0039
Order Effective Date: June 9, 2023

Report Type Submitted
<input type="checkbox"/> Report Type 1: Annual Report
<input type="checkbox"/> Report Type 2: Commencement of Construction Report
<input type="checkbox"/> Report Type 3: Request for Notice of Completion Discharges Letter
<input type="checkbox"/> Report Type 4: Request for Notice of Project Complete Letter
<input type="checkbox"/> Report Type 5: Transfer of Property Ownership Report

"I certify under penalty of law that I have personally examined and am familiar with the information submitted in this document and all attachments and that, based on my inquiry of those individuals immediately responsible for obtaining the information, I believe that the information is true, accurate, and complete. I am aware that there are significant penalties for submitting false information, including the possibility of fine and imprisonment."

CITY OF HIGHLAND

LINE A STORM DRAIN AND BLEDSOE GULCH OUTFALL RECONSTRUCTION

ATTACHMENT B—REPORTS AND NOTIFICATIONS

STATEMENT OF AUTHORIZATION (include if authorization has changed since application was submitted)

I hereby authorize _____ to act in my behalf as my representative in the submittal of this report, and to furnish upon request supplemental information in support of this submittal.

Report Type 1	Annual Report
Purpose:	Notify the Santa Ana Water Board staff of Project status during both the active discharge and post-discharge monitoring periods.
When to Submit:	Annual reports shall be submitted each year by the effective date. Annual reports shall continue until a <i>Notice of Project Complete Letter</i> is issued to the Discharger.
Report Contents:	<p>Part A:</p> <ol style="list-style-type: none"> 1. Project progress and schedule, including initial ground disturbance, site clearing and grubbing, road construction, site construction, and the implementation status of construction storm water BMPs. If construction has not started, provide estimated start date and reasons for delay. <p>Part B:</p> <ol style="list-style-type: none"> 1. Planned date of initiation of compensatory mitigation site installation. 2. If installation is in progress, a map of what has been completed to date. 3. If the compensatory mitigation site has been installed, provide a final map and information concerning attainment of performance standards contained in the compensatory mitigation plan. 4. For Mitigation Bank or In-Lieu Fee (ILF) mitigation,

CITY OF HIGHLAND

LINE A STORM DRAIN AND BLEDSOE GULCH OUTFALL RECONSTRUCTION

ATTACHMENT B—REPORTS AND NOTIFICATIONS

Report Type 1	Annual Report
	<p>status or proof of purchase of credit types and quantities.</p> <p>5. Include the name of bank/ILF Program and contact information.</p>

Report Type 2	Commencement of Construction
Purpose:	Notify the Santa Ana Water Board staff prior to the start of construction.
When to Submit:	Must be received at least seven (7) days to start of initial ground disturbance activities.
Report Contents:	<ol style="list-style-type: none"> 1. Date of commencement of construction. 2. Anticipated date when discharges to waters of the state will occur. 3. Project schedule milestones, including a schedule for onsite compensatory mitigation, if applicable.

Report Type 3	Request for Notice of Completion of Discharge Letter
Purpose:	Notify Santa Ana Water Board staff that post-construction monitoring is required and that active Project construction, including any mitigation and Discharger-responsible compensatory mitigation, is complete.
When to Submit:	Must be received by Santa Ana Water Board staff within thirty (30) days following completion of all Project activities.
Report Contents:	<ol style="list-style-type: none"> 1. Status of storm water Notice of Termination(s), if applicable. 2. Status of post-construction storm water BMP installation. 3. Pre- and post-photo documentation of all Project activity sites where the discharge of dredge and/or fill/excavation was authorized. 4. Summary of deviation discharge quantities compared to initial authorized impacts to waters of the state, if applicable.

ATTACHMENT B—REPORTS AND NOTIFICATIONS

Report Type 3	Request for Notice of Completion of Discharge Letter
	5. An updated monitoring schedule for mitigation for temporary impacts to waters of the state and Discharger-responsible compensatory mitigation during the post-discharge monitoring period, if applicable.

Report Type 4	Request for Notice of Project Complete Letter
Purpose:	Notify Santa Ana Water Board staff that construction and/or any post-construction monitoring is complete, or is not required, and no further Project activity is planned.
When to Submit:	Must be received by Santa Ana Water Board staff within thirty (30) days following completion of all Project activities.
Report Contents:	<p>Part A: Mitigation for Temporary Impacts (if applicable)</p> <ol style="list-style-type: none"> 1. A report establishing that the performance standards outlined in the restoration plan have been met for Project site upland areas of temporary disturbance that could result in a discharge to waters of the state. 2. A report establishing that the performance standards outlined in the restoration plan have been met for restored areas of temporary impacts to waters of the state. Pre- and post-photo documentation of all restoration sites. <p>Part B: Discharger-Responsible Compensatory Mitigation (if applicable)</p> <ol style="list-style-type: none"> 1. A report establishing that the performance standards outlined in the compensatory mitigation plan have been met. 2. Status on the implementation of the long-term maintenance and management plan and funding of endowment. 3. Pre- and post-photo documentation of all compensatory mitigation sites. 4. Final maps of all compensatory mitigation areas (including buffers).

ATTACHMENT B—REPORTS AND NOTIFICATIONS

Report Type 4	Request for Notice of Project Complete Letter

Report Type 5	Transfer of Property Ownership
Purpose:	Notify Santa Ana Water staff of change in ownership of the Project or Discharger-responsible mitigation area.
When to Submit:	At least 30 working days prior to the transfer of ownership.
Report Contents:	<ol style="list-style-type: none"> 1. A statement that the Discharger has provided the purchaser with a copy of this Order and that the purchaser understands and accepts: <ul style="list-style-type: none"> • the Order's requirements and the obligation to implement them or be subject to administrative and/or civil liability for failure to do so; and • responsibility for compliance with any long-term BMP maintenance plan requirements in this Order. 2. A statement that the Discharger has informed the purchaser to submit a written request to the Santa Ana Water Board to be named as the Discharger in a revised order.

ATTACHMENT C—SIGNATORY REQUIREMENTS

All Documents Submitted in Compliance With this Order Shall Meet the Following Signatory Requirements

1. All applications, reports, or information submitted to the Santa Ana Water Board shall be signed and certified as follows:
 - a. For a corporation, by a responsible corporate officer of at least the level of vice-president.
 - b. For a partnership or sole proprietorship, by a general partner or proprietor, respectively.
 - c. For a municipality, or a State, federal, or other public agency, by either a principal executive officer or ranking elected official.
2. A duly authorized representative of a person designated in items 1.a through 1.c above may sign documents if:
 - a. The authorization is made in writing by a person described in items 1.a through 1.c above.
 - b. The authorization specifies either an individual or position having responsibility for the overall operation of the regulated activity.
 - c. The written authorization is submitted to the Santa Ana Water Board staff contact prior to submitting any documents listed in item 1 above.
3. Any person signing a document under this section shall make the following certification:

“I certify under penalty of law that I have personally examined and am familiar with the information submitted in this document and all attachments and that with the information submitted in this document and all attachments and that, based on my inquiry of those individuals immediately responsible for obtaining the information, I believe that the information is true, accurate, and complete. I am aware that there are significant penalties for submitting false information, including the possibility of fine and imprisonment.”