

CALIFORNIA REGIONAL WATER QUALITY CONTROL BOARD
SANTA ANA REGION

3737 Main Street, Suite 500
Riverside, CA 92501-3348
(951) 782-4130

[Santa Ana Water Board Website](https://www.waterboards.ca.gov/santaana) (<https://www.waterboards.ca.gov/santaana>)

**[TENTATIVE] WASTE DISCHARGE REQUIREMENTS ORDER
R8-2025-0043**

ORDER INFORMATION

Status: TENTATIVE
Program: Dredged or Fill Material Program
Discharger(s): City of Irvine
Project: Hicks Canyon Wash Project
County: Orange County
CIWQS WDID: 302024-19
Prior Order(s): (none)

CERTIFICATION

I, ERIC LINDBERG, Executive Officer, hereby certify that the following is a full, true, and correct copy of the order adopted by the California Regional Water Quality Control Board, Santa Ana Region, on September 12, 2025.

ERIC LINDBERG
Executive Officer

TABLE OF CONTENTS

Findings	1
Project Description and Discharge Characteristics	2
Regulatory Considerations.....	5
CEQA and Public Participation	6
Requirements	7
A. Discharge Specifications	7
B. Discharge Prohibitions.....	8
C. Mitigation Requirements.....	9
D. Provisions.....	10
Attachment A—MAPS	14
Attachment B—REPORTS and NOTIFICATIONS.....	23
Attachment C—SIGNATORY REQUIREMENTS	30

CALIFORNIA REGIONAL WATER QUALITY CONTROL BOARD
SANTA ANA BASIN REGION

ORDER R8-2025-0043

WASTE DISCHARGE REQUIREMENTS
FOR
DISCHARGES OF DREDGED OR FILL MATERIALS TO WATERS OF THE STATE
HICKS CANYON WASH
ORANGE COUNTY

FINDINGS

The Santa Ana Regional Water Quality Control Board (Santa Ana Water Board) hereby finds as follows:

1. This Order prescribes Waste Discharge Requirements (WDRs) for the Hicks Canyon Wash Project (Project) proposed by the City of Irvine (Discharger).
2. Receiving waters and groundwater potentially impacted by this Project are protected in accordance with the operative Water Quality Control Plan for the Santa Ana River Basin (Basin Plan) and all other pertinent water quality plans and policies. The Basin Plan includes water quality standards, which consist of existing and potential beneficial uses of waters of the state, water quality objectives to protect those uses, and the state and federal antidegradation policies.
3. The Santa Ana Water Board has the authority to regulate the discharge of dredged and fill materials by prescribing WDRs pursuant to California Water Code section 13263. The Santa Ana Water Board has determined that WDRs are necessary to protect the Project's potential impacts on the beneficial uses of waters of the State.
4. This Order is issued in compliance with the State Water Resources Control Board's (State Water Board) *State Policy for Water Quality Control: State Wetland Definition and Procedures for Discharges of Dredged or Fill Material to Waters of the State* (Dredge and Fill Procedures), as revised on April 6, 2021.
5. On October 23, 2024, on behalf of the Discharger, Helix Environmental Planning, Inc. submitted an *Application for Discharges of Dredged or Fill Material to Waters of the State* (Application) for the Project, which was assigned Santa Ana Water Board WDID No. 302024-19.
6. The Application was deemed complete on March 13, 2025.
7. On April 8, 2025, the United States Army Corps of Engineers issued an Approved Jurisdictional Determination, which determined that waters of the United States were not present within the Project boundaries.

Project Description and Discharge Characteristics

8. The purpose of the Project is to regrade the channel slopes of Hicks Canyon Wash and extend six (6) existing storm drain segments to an existing subsurface pipe in compliance with the 100-year flow management practices to prevent further erosion, stabilize the channel banks, and protect adjacent residential properties from flooding.
9. The 13.5-acre Project site is located 1.25 miles east of Interstate 5 and 0.6 miles south of State Route 261 in the City of Irvine (Latitude: 33.722691°N Longitude: -117.759799°W). The Project site consists of an approximately 1.2-mile segment of the Hicks Canyon Wash extending from Culver Drive at the western boundary to 1,650 feet east of Yale Avenue. Maps showing the exact Project location are found in Attachment A of this Order.
10. Hicks Canyon Wash is comprised of two types of water conveyances, an existing subsurface 120-inch diameter cast-in-place concrete pipe (CIPP), and an earthen channel.
11. The 120-inch CIPP begins at an inlet located approximately 725 feet east of Portola Parkway and approximately 120 feet north of Jeffrey Road. The CIPP continues approximately 1.9 miles westward under Portola Parkway and along Hicks Canyon Wash, then joins Hicks Canyon Channel.
12. Hicks Canyon Wash is an earthen-sloped channel that originates at the Lomas de Santiago Foothills (approximately 1,650 feet east of Yale Avenue) and continues 1.2 miles westward before joining Hicks Canyon Channel.
13. Hick Canyon Wash is an earthen trapezoidal channel with drop structures that have experienced side slope erosion and sediment accumulation along the bottom channel. The channel bottom varies from approximately three (3) feet wide to eight (8) feet wide, the depth is approximately eight (8) feet, and side slopes range from vertical, at drop structure locations, to two (2) feet horizontal to one (1) foot vertical for most of its reach.
14. Hicks Canyon Wash is currently dominated by mature eucalyptus (*Eucalyptus sp.*) trees and mostly unvegetated land, with small pockets of riparian vegetation.
15. Surface water discharges into Hicks Canyon Wash include stormwater flows from the adjacent residential developments that are conveyed through six (6) storm drain lines.
16. The Project activities include removing abandoned concrete structures and clearing excessive vegetation and accumulated sediments from the channel bottom of Hick Canyon Wash. A total of 4.56 acres of vegetation will be removed through clearing and grubbing.

17. The Project activities also include the removal of all existing eucalyptus trees and decayed trunks within and adjacent to Hicks Canyon Wash.
18. Hick Canyon Wash will be regraded and contoured to achieve a maximum slope of 2:1 on either side for a total elevation change of approximately 10 feet between the base of the channel and the height of the banks on either side.
19. Each of the six (6) existing storm drains will be extended to connect to the existing subsurface 120-inch CIPP, to allow additional stormwater flows to be conveyed.
20. At each storm drain location, Hick Canyon Wash will be excavated to access the existing subsurface CIPP. At each location, an additional pipe segment will be installed using a junction structure and concrete collar attaching to the existing CIPP.
21. The proposed grading will include creating a compacted fill berm over each pipe extension to provide a trail or access crossing over Hick Canyon Wash. Table 1 below summarizes the total dimensions of each earthen berm crossing.
22. Following all the grading activities, the channel bank slopes, and bottom will be planted with native riparian and upland species to increase the wildlife functions and services of Hicks Canyon Wash.

Table 1: Dimensions of the Berm Crossings

Crossing Location	Top Width (feet)	Length (feet)	Maximum Height (feet)
60"-Line A	15	150	10
Urbino-Line B	15	90	6
Quebrada-Line C	15	80	10
Tiempo-Line D	15	150	8
Recodo-Line E	15	90	3

23. A total of 1.29 acres of ephemeral waters of the State which consist of 1.18 acres of non-wetland waters, 0.01 acres of ungrouted rip rap, and 0.1 acres of wetland waters, are present on the Project site. Hicks Canyon Wash is an intermittent drainage that flows southwesterly into Hick Canyon Channel and continues into Peters Canyon Wash located 1.45 miles downstream.

24. The Project will require a raw cut of 4,933 cubic yards and a raw fill material of 2,359 cubic yards. Fill materials will also be discharged to fill areas within Hicks Canyon Wash affected by the removal of the existing concrete structures and eucalyptus trees/trunks, and associated root structures.
25. The implementation of the Project will result in a total of 0.97 acre of permanent impacts to waters of the State. Specifically, the physical modification of 0.93 acre of Hick Canyon Wash by regrading the channel slopes to comply with the 100-year flow management practices, and 0.04 acre for the construction of the earthen berms at each stormdrain connection.
26. Indirect impacts to Hicks Cayon Wash may occur because of surface water flows pooling during minor storm events due to the berm construction at each storm drain location, and redirecting stormwater flows into the existing CIPP.
27. The duration of significant storm events where rainfall exceeds the infiltration rate of the pervious soil, stormwater that does result in minor pooling is expected to discharge to the proposed storm drain extensions through inlets at the bottom of the Hicks Canyon Wash, upstream of each berm. These stormwater discharges will continue to discharge through the main CIPP and continue downstream.
28. The Project will impact Hicks Canyon Wash, an intermittent tributary to San Diego Creek, Reach 2. Hicks Canyon Wash and San Diego Creek, Reach 2 have the following designated beneficial uses (existing or potential): Municipal and Domestic Supply, Groundwater Recharge, Water Contact Recreation, Non-contact Water Recreation, Warm Freshwater Habitat, Wildlife Habitat, Rare, Threatened, or Endangered Species.
29. The Discharger has proposed to provide compensatory mitigation for permanent impacts to waters of the State through permittee-responsible mitigation.
30. The Discharge is proposing 0.04 acres of re-establishment to offset the Project's permanent impacts from the construction of the earthen berms.
31. In addition, the Discharger will enhance 4.51 acres within the channel bank slopes to offset permanent impacts from the modification of Hicks Canyon Wash by increasing the native coverage in the bare and disturbed channel.
32. No additional compensatory mitigation is required because the widening of the channel will prevent further erosion of the channel and stabilize the channel banks with native vegetation to provide additional habitat functions and values within Hick Canyon Wash.
33. Maintenance activities within the mitigation site and enhancement areas will be conducted monthly during the 90-day Plant Establishment Period of the first year, with five additional visits for a total of eight times in Year One. Six visits will occur in

Years Two and Three. Five weeding events in Year Four and four weeding events in Year Five.

Regulatory Considerations

34. This Order is adopted pursuant to Water Code section 13263, subdivision (a), which provides that the Santa Ana Water Board may, after any necessary hearing, prescribe requirements (WDRs) as to the nature of any proposed discharge with relation to the conditions existing in the disposal area or receiving waters upon, or into which, the discharge is made or proposed. The WDRs are required to implement any relevant water quality control plans that have been adopted and take into consideration the beneficial uses to be protected, the water quality objectives reasonably required for that purpose, other waste discharges, the need to prevent nuisance, and the provisions of Water Code section 13241.
35. This Order is also adopted pursuant to Water Code section 13267, subdivision (b)(1) which authorizes the Santa Ana Water Board to require technical and monitoring program reports, submitted under penalty of perjury, from persons discharging or proposing to discharge waste within the Santa Ana Region, in connection with the issuance of WDRs. This Order incorporates requirements for water quality monitoring and Project reporting, which are necessary to ensure that the discharge of dredged and fill material complies with WDRs and is protective of the water quality. In accordance with Water Code section 13267, the burden, including costs, of generating these reports bears a reasonable relationship to the need for the report and the benefits to be obtained from them.
36. The Santa Ana Water Board has considered the federal and state antidegradation policies (State Water Board Resolution 68-16 and 40 C.F.R § 131.12) and finds that the discharge permitted under this Order is consistent with those policies. Filling wetlands, riparian areas, headwaters, and other waters causes partial or complete loss of the beneficial uses provided by those waters. This Order requires that impacts to waters of the state be mitigated through avoidance and minimization to the maximum extent practicable and that unavoidable loss of beneficial uses is offset with compensatory mitigation, including the restoration (reestablishment or rehabilitation), establishment (creation), enhancement, and/or preservation of other waters of the State.
37. This Order is subject to modification or revocation upon administrative or judicial review, including review and amendment pursuant to Water Code section 13330 and California Code of Regulations, title 23, section 2050 et seq. Additionally, the Santa Ana Water Board reserves the right to suspend, cancel, or modify and reissue this Order, after providing notice to the Discharger, if the Santa Ana Water Board determines that the Project fails to comply with any of the conditions of this Order; or when necessary to implement any new or revised water quality standards and implementation plans adopted or approved pursuant to the Porter-Cologne Water Quality Control Act (Wat. Code, § 13000 et seq).

38. The provisions of this Order are severable and, if any provision of this Order or the application of any provisions of this Order to any circumstance is held invalid, the application of such provision to other circumstances and the remainder of this Order shall not be affected thereby.
39. A request for modification, revocation and re-issuance, or termination of this Order or a notification of planned changes or anticipated noncompliance does not stay any requirements of this Order.
40. The requirements prescribed herein do not authorize the commission of any act causing injury to the property of another, nor protect the Discharger from liabilities under federal, state, or local laws, nor guarantee the Discharger a capacity right in the receiving waters.
41. This Order does not convey any property rights of any sort, or any exclusive privilege. The ability to discharge waste is a privilege, not a right; nothing in this Order shall create a vested right to continue any discharges authorized herein, which are subject to rescission or modification. (Wat. Code, § 13263, subd. (g).)

CEQA and Public Participation

42. On October 23, 2023, the City of Irvine, as the lead agency under the California Environmental Protection Act (CEQA; Public Resources Code, § 21000 et seq.) conducted an Initial Study and adopted a Mitigated Negative Declaration (MND) for the Project (State Clearinghouse 2023050528,). The lead agency filed a Notice of Determination with City of Irvine and Office of Planning and Research on April 1, 2025.
43. The Santa Ana Water Board is a responsible agency under CEQA for the purposes of issuing this Order. As a responsible agency, the Santa Ana Water Board is “responsible for considering only the effects of those activities involved in a project which it is required by law to carry out or approve.” (Public Resources Code, § 21002.1, subd. (d).) In approving this Order, the Santa Ana Water Board has considered the MND adopted by the City of Irvine and subsequent information provided by the Discharger. More specifically, the Santa Ana Water Board considered those sections of the MND pertaining to impacts to water quality. The Santa Ana Water Board finds that compliance with MND and terms and conditions specified in this Order will reduce potential adverse impacts to water quality to a less than significant level and protect beneficial uses of receiving waters.
44. The Santa Ana Water Board has notified the Discharger and other interested agencies and persons of its intent to prescribe WDRs for the discharge and has provided them with an opportunity for public hearing to submit comments.
45. The Santa Ana Water Board, in a public meeting, heard and considered all comments pertaining to the WDRs for the discharge.

REQUIREMENTS

IT IS HEREBY ORDERED, pursuant to Water Code sections 13263 and 13267, that the Discharger shall comply with the following:

A. Discharge Specifications

1. Activities associated with the Project shall not cause or threaten to cause a condition of nuisance, contamination or pollution as defined in Water Code section 13050.
2. The groundwater in the vicinity of the Project shall not be degraded resulting from the Project activities or placement of fill materials for the Project.
3. The Discharger shall comply with the local regulations associated with the Santa Ana Water Board's Municipal Stormwater Permit issued to Orange County and co-permittees under NDPES No. CAS618030 and WDRs Order R8-2009-0030 as amended by Order R8-2010-0062, and subsequent iterations thereof.
4. If construction dewatering discharges, including temporary stream diversions, are necessary to carry out the Project, the Discharger shall enroll and comply with the Santa Ana Water Board Order R8-2020-0006, *General Waste Discharge Requirements for Discharges to Surface Waters that Pose an Insignificant (De Minimis) Threat to Water Quality*.
5. Discharges of fill materials shall be limited to the placement of native fill and "inert waste," as defined in California Code of Regulations, title 27, section 20230.
6. Construction and post-construction best management practices (BMPs) shall be implemented. Including but not limited to the following:
 - a. Effective perimeter control shall be implemented to control the discharge of pollutants from the Project site during construction. Construction waste shall be contained and protected against wind and exposure to stormwater, unless it is being actively handled. Chemical, fuel, and lubricant containers shall be kept closed and protected from damage or tipping over, unless being actively used. Dirt and landscaping material stockpiles must employ effective erosion control BMPs to prevent their transport in stormwater or directly into waters of the State.
 - b. Motorized equipment shall not be maintained or parked in or near any stream crossing or channel, in such a manner that petroleum products or other pollutants from the equipment might enter these areas under any flow conditions. Vehicles shall not be driven, or equipment shall not be operated

on-site in waters of the State, except as necessary to conduct proposed Project activities.

- c. Prior to construction, the Discharger shall delineate the authorized work area with brightly colored fencing or other approved methods to prevent impacts to Waters of the State beyond the limits specified in this Order.
- d. The Discharger shall visually inspect the Project site during the rainy season for two (2) subsequent years after Project completion to ensure excessive pooling, erosion, or other water quality pollution is not occurring in or downstream of the Project site. Additional permits may be required to carry out any necessary site remediation. During the post construction monitoring period, the berms shall be inspected following moderate rain events from 0.10 inches or more per hour.

B. Discharge Prohibitions

- 1. Permanent impacts to waters of the State from the Project shall not exceed quantities identified in Finding 25.
- 2. Impacts to waters of the State are not authorized and shall not occur until the final compensatory mitigation plan has been approved by Santa Ana Water Board staff.
- 3. Except as expressly authorized in another WDRs order, waste shall not be discharged in a manner or location other than as described in the findings herein.
- 4. Except for authorized fill material discharges to waters of the state, the direct discharge of wastes, including rubbish, refuse, bark, sawdust, or any other solid or liquid wastes, into water channels, surface waters, or any place where they would contact or be eventually transported to surface waters, including flood plains, is prohibited.
- 5. The discharge of oil or other floating materials from any activity in quantities sufficient to cause deleterious bottom deposits, turbidity, or discoloration in surface waters is prohibited.
- 6. The discharge of silt, sand, clay, or other earthen materials from any activity in quantities sufficient to cause deleterious bottom deposits, turbidity, or discoloration in surface waters is prohibited.
- 7. Discharges to surface waters of wastes or pollutants that are not authorized by this Order or regulated by a separate permit are prohibited.

8. During the grading and filling operation, there shall be no onsite fueling, lubrication, changing of oil or other equipment fluids and their filters, or any other maintenance or storage of construction equipment within or next to drainage areas or other surface runoff conveyances.

C. Mitigation Requirements

1. The Discharger shall provide permittee-responsible compensatory mitigation at a ratio of 1:1 for the authorized permanent impacts to 0.04 acres of waters of the State by re-establishment of riparian wetland within the northwest portion of the Hick Canyon Wash.
2. The Discharge shall enhance 4.51 acres of Hick Canyon Wash for authorized modification of waters of the State.
3. The Discharger has submitted a draft compensatory mitigation plan as part of the Application package. The Discharger shall provide a final compensatory mitigation plan for review and approval by Santa Ana Water Board staff within 60 days prior to initiating impacts within waters of the State. The final compensatory mitigation plan shall include all plan elements as outlined in the Dredge and Fill Procedures, Subpart J – *Compensatory Mitigation for Losses of Aquatic Resources*, including the following:
 - a. Workplan: Detailed written specifications and work descriptions for the compensatory mitigation, including, but not limited to, the geographic boundaries; construction methods, timing, and sequence; source(s) of water, methods for establishing the desired plant community; plans control invasive plant species; and erosion control measures.
 - b. Maintenance: A description and schedule of maintenance requirements to ensure the continued viability of the resource once initial construction is completed.
 - c. Performance Standards. Ecologically based standards that will be used to determine whether compensatory mitigation is achieving its objectives.
 - d. Monitoring: A description of parameters to be monitored to determine if the compensatory mitigation is on track to meet performance standards and if adaptive management is needed.
 - e. Adaptive Management: A management strategy to address unforeseen changes in site conditions or other components of compensatory mitigation, including the party or parties responsible for implementing adaptive management measures.

4. The permittee-responsible compensatory mitigation shall occur concurrently with Project construction and authorized impacts to waters of the State.

D. Provisions

1. The Discharger shall maintain a copy of this Order at the Project site so that it is always available to site operating personnel. Key operating personnel shall be familiar with the Order's content.
2. The Discharger shall take all reasonable steps to minimize or prevent any discharge that has a reasonable likelihood of adversely affecting human health and the environment.
3. This Order is not transferable to any person without written approval by the Santa Ana Water Board's Executive Officer. Prior to any change in ownership, the Discharger shall notify the Santa Ana Water Board's Executive Officer in writing at least 30 days in advance. The notice shall include a written transfer agreement between the existing owner and the new owner. At a minimum, the transfer agreement shall contain a specific date for transfer of responsibility for compliance with this Order and an acknowledgment that the new owner or operator is liable for compliance with this Order from the date of transfer. The Santa Ana Water Board may require modification or revocation and reissuance of this Order to change the name of the Discharger and incorporate other requirements as may be necessary under the Water Code.
4. The reporting period is from January 1st to December 31st. The Discharger shall submit an annual report each year no later than January 31st for the previous reporting period if the Order's effective date is at least 90 days within the reporting period. Annual reporting shall continue until a Notice of Project Complete Letter is issued to the Permittee. The contents of the annual report shall include a construction summary, Project status and schedule (including ground disturbance, site clearing and grubbing, and site construction), and the implementation status of BMPs during the active discharge period. If the Project has not started, the Discharger shall provide an estimated start date and reasons for any expected delays.
5. The Discharger shall submit a *Commencement of Construction Report* at least seven days prior to start of initial groundbreaking activities.
6. The Discharger shall submit a *Request for Notice of Completion of Discharges Letter* following completion of active Project construction activities, including any required restoration and Discharger-responsible mitigation. This request shall be submitted to Santa Ana Water Board staff within 30 days following the completion of all Project construction activities. Upon acceptance of the request, Santa Ana Water Board staff will issue to the Discharger a *Notice of*

Completion of Discharges Letter, which will end the active discharge period and, if appropriate, associated annual fees.

7. The Discharger shall submit a *Request for Notice of Project Complete Letter* when construction and any required post-construction monitoring is complete and no further Project activities will occur. This request shall be submitted to Santa Ana Water Board staff within 30 days following the completion of all Project activities. Upon approval of the request, Santa Ana Water Board staff will issue to the Discharger a *Notice of Project Complete Letter* and prepare a draft order terminating this Order for approval by the Santa Ana Water Board. The *Notice of Project Complete Letter* will end the post-discharge monitoring period, and either the expiration or Board approval of the termination of this Order will end the associated annual fees.
8. The Discharger shall retain records of all monitoring information, including all calibration and maintenance records, copies of all reports required by this Order, and records of all data used to complete the application for this Order. Records shall be maintained for a minimum of five years from the date of the sample, measurement, report, or application. Records may be maintained electronically. This period may be extended during for any unresolved enforcement action or litigation regarding this discharge or when requested by the Santa Ana Water Board.
9. The Discharger shall report any noncompliance that may endanger human health or the environment. Information shall be provided orally to the Santa Ana Water Board office and the Office of Emergency Services within twenty-four (24) hours of when the Discharger becomes aware of the incident. If noncompliance occurs outside of business hours, the Discharger shall leave a message on the Santa Ana Water Board's office voicemail. A written report shall also be provided within five business days of the time when the Discharger becomes aware of the incident. The written report shall contain a description of the noncompliance and its cause, the period of noncompliance, the anticipated time to achieve full compliance, and the steps taken or planned to reduce, eliminate, and prevent recurrence of the noncompliance. All other forms of noncompliance shall be reported with the Discharger's next scheduled Monitoring Report, or earlier if requested by the Executive Officer.
10. Before initiating a new discharge or making a material change in the character, location, or volume of an existing discharge, the Discharger shall report all pertinent information in writing to the Santa Ana Water Board, and if required by the Santa Ana Water Board, obtain revised requirements before any modifications are implemented.
11. The Discharger shall allow the Santa Ana Water Board, or an authorized representative, upon presentation of credentials and other documents as may be required by law to:

- a. Enter premises where a regulated facility or activity is located or conducted, or where records are kept under the requirements of this Order;
 - b. Access and copy any records that are kept under the requirements of this Order;
 - c. Inspect any facility, equipment (including monitoring and control equipment), practices, or operations regulated or required under this Order; and
 - d. Photograph, sample, or monitor for the purpose of assuring compliance with this Order or as otherwise authorized by the Water Code.
12. If the Project is not commenced within five years of adoption of this Order, the Discharger shall submit a Project status report. The Project status report shall be filed no later than 180 days before the fifth anniversary of the Order's adoption date.¹

LIST OF ATTACHMENTS

Attachment A—MAPS
Attachment B—REPORTS and NOTIFICATIONS
Attachment C—SIGNATORY REQUIREMENTS

ENFORCEMENT

The Santa Ana Water Board reserves the right to take any enforcement action authorized by law. Accordingly, failure to timely comply with any provisions of this Order may subject the Discharger to enforcement action. Such actions include, but are not limited to, the assessment of administrative civil liability pursuant to Water Code sections 13323, 13268, and 13350, a Time Schedule Order (TSO) issued pursuant to Water Code sections 13300 and 13308, or referral to the California Attorney General for recovery of judicial civil liability.

ADMINISTRATIVE REVIEW

Any person aggrieved by this Santa Ana Water Board action may petition the State Water Board for review in accordance with Water Code section 13320 and California Code of Regulations, title 23, section 2050 et seq. To be timely, the petition must be received by the State Water Board by 5:00 pm on the 30th day after the date of this

¹ Depending on the contents of the Project Status Report, the Santa Ana Water Board may require the submittal of a Report of Waste Discharge (application) for updated WDRs.

Order; if the 30th day falls on a Saturday, Sunday or state holiday, the petition must be received by the State Water Board by 5:00 pm on the next business day. The law and regulations applicable to filing petitions are available on the [State Water Board website \(http://www.waterboards.ca.gov/public_notices/petitions/water_quality\)](http://www.waterboards.ca.gov/public_notices/petitions/water_quality). Copies will also be provided upon request.

TENTATIVE

[illegible]

Figure 1: Regional Location



Figure 2: Jurisdictional Waters of the State



Figure 2a: Jurisdictional Waters of the State (Continued)



Figure 2b: Jurisdictional Water of the State (*Continued*)



Figure 2c: Jurisdictional Waters of the State (Continued)



Figure 3: Impacts to Waters of the State

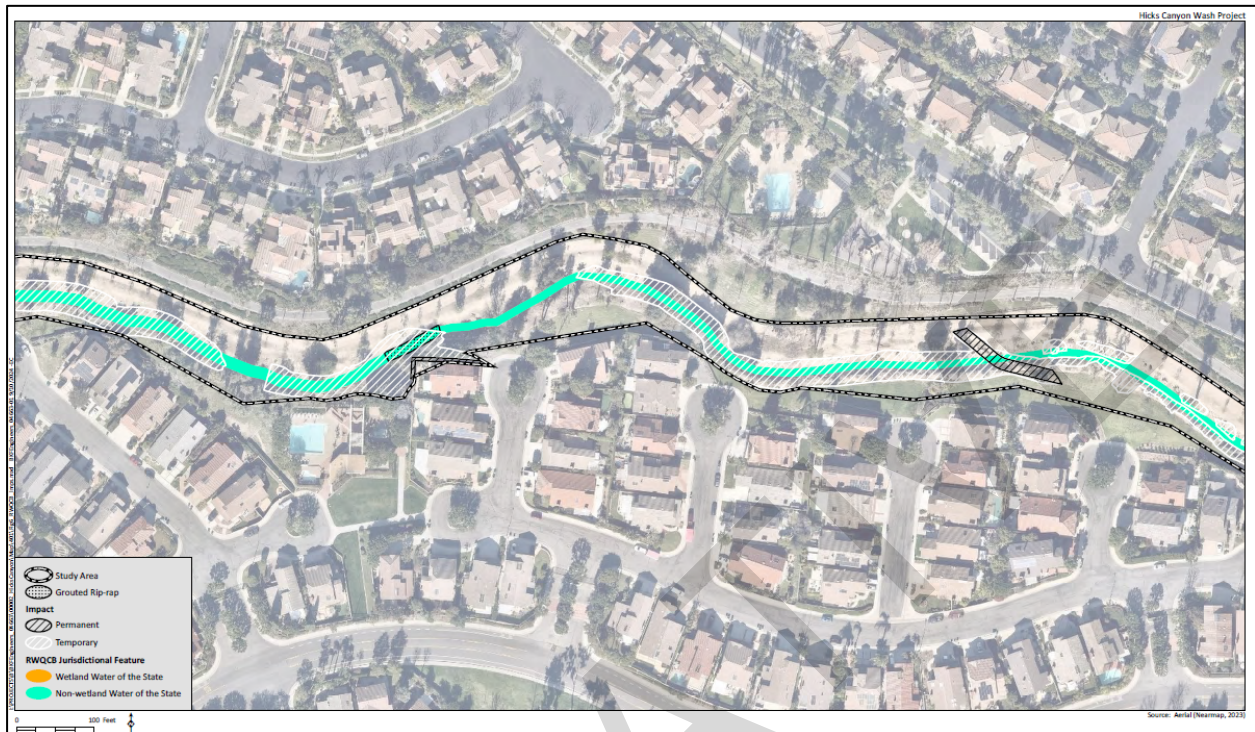


Figure 3a: Impacts to Waters of the State (Continued)



Figure 3b: Impacts to Waters of the State (*Continued*)

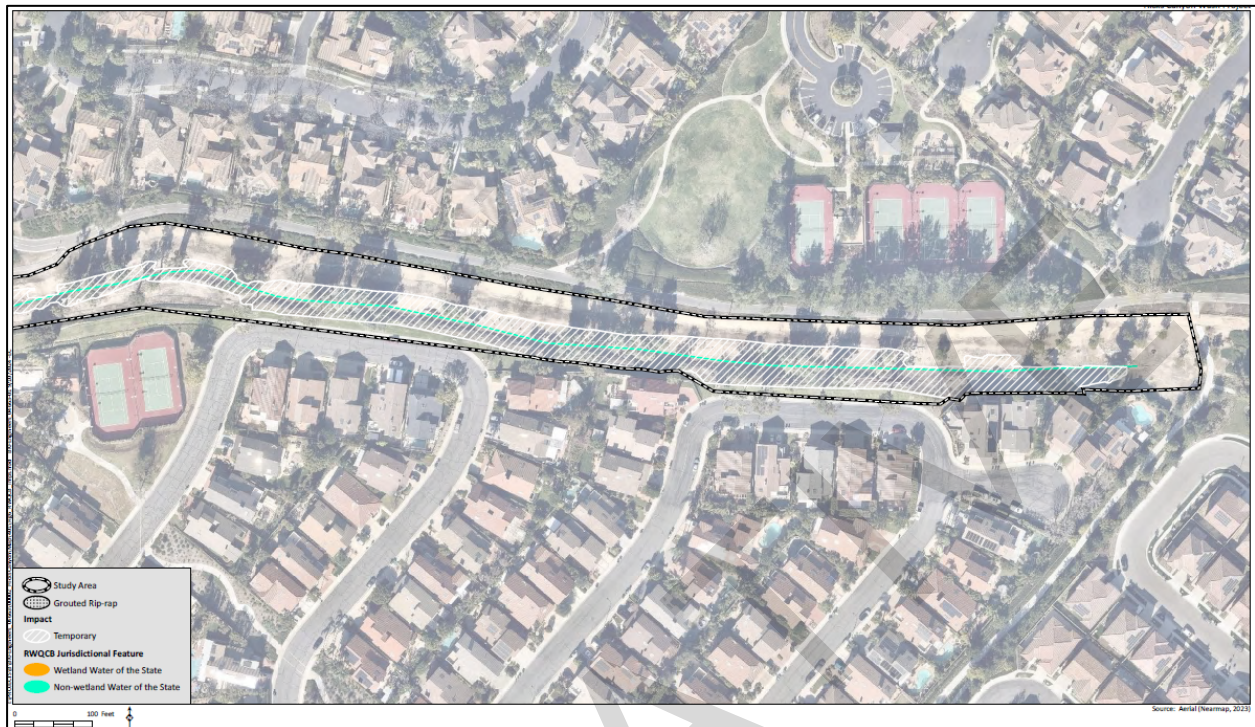


Figure 3c: Impacts to Waters of the State (Continued)

ATTACHMENT B—REPORTS AND NOTIFICATIONS

Copies of this Form

To identify your Project, it is necessary to include a copy of the Project-specific Report and Notification Cover Sheet below with your report (see below). Please retain a copy for your records.

Report Submittal Instructions

- 1) Check the box on the *Report and Notification Cover Sheet* next to the report or notification you are submitting.
 - a) Part A (Annual Report): Submitted annually from the anniversary of the Project effective date until a *Notice of Project Complete Letter* is issued.
 - b) Part B (Project Status Notifications): Used to notify the Santa Ana Water Board of the status of the Project schedule that may affect Project billing.
- 2) Sign the *Report and Notification Cover Sheet* and attach all information requested for the Report Type.
- 3) Electronic Report Submittal Instructions:
 - a) Submit signed *Report and Notification Cover Sheet* and required information via email to: RB8-401Reporting@waterboards.ca.gov
 - b) Include in the subject line of the email: Order R8-2025-0043 and Report Type Name
 - c) Additionally, electronically submit Annual Reports using the State Water Board's California Integrated Water Quality System (CIWQS) Program website [California Integrated Water Quality System Project \(CIWQS\) | California State Water Resources Control Board](#). The CIWQS website will provide additional information for report submittal in the event there will be a planned service interruption for electronic submittal.

Definition of Reporting Terms

- 1) **Active Discharge Period:** The active discharge period begins with the effective date of this Order and ends on the date that the Discharger receives a *Notice of Completion of Discharges Letter* or, if no post-construction monitoring is required, a *Notice of Project Complete Letter*. The Active Discharge Period includes all elements of the Project, including site construction and restoration, and any Discharger-responsible compensatory mitigation construction.
- 2) **Request for Notice of Completion of Discharges Letter:** This request by the Discharger to the Santa Ana Water Board staff pertains to projects that have post construction monitoring requirements (e.g., if site restoration were required to be monitored for five (5) years following construction). Santa Ana Water Board staff will review the request and send a *Completion of Discharges Letter* to the Discharger upon approval. This letter will initiate the post-discharge monitoring period and a change in fees from the annual active discharge fee to the annual post-discharge monitoring fee.
- 3) **Request for Notice of Project Complete Letter:** This request by the Discharger to the Santa Ana Water Board staff pertains to projects that either have completed post-construction monitoring and achieved performance standards, or have no post-construction monitoring requirements and no further Project activities are planned. Santa Ana Water Board staff will review the request and send a *Project Complete Letter* to the Discharger upon approval. Termination of annual invoicing of fees will correspond with the expiration or termination by Board action of this Order.

Map/Photo Documentation Information

When submitting maps or photos, please use the following formats.

1. **Map Format Information:**

Preferred map formats of at least 1:24000 (1" = 2000') detail (listed in order of preference):

- **GIS shapefiles:** The shapefiles shall depict the boundaries of all Project areas and extent of aquatic resources impacted. Each shape should be attributed with the extent/type of aquatic resources impacted. Features and boundaries should be accurate to within 33 feet (10 meters). Identify datum/projection used and, if possible, provide map with a North American Datum of 1983 (NAD83) in the California Teale Albers projection in feet.

CITY OF IRVINE

HICKS CANYON WASH PROJECT

ATTACHMENT B—REPORTS AND NOTIFICATIONS**Map/Photo Documentation Information**

- **Google KML files** saved from Google Maps: My Maps or Google Earth Pro. Maps shall show the boundaries of all Project areas and extent/type of aquatic resources impacted. Include URL(s) of maps. If this format is used, include a spreadsheet with the object ID and attributed with the extent/type of aquatic resources impacted.
 - **Other electronic format** (CAD or illustration format) that provides a context for location (inclusion of landmarks, known structures, geographic coordinates, or USGS DRG or DOQQ). Maps shall show the boundaries of all Project areas and extent/type of aquatic resources impacted. If this format is used, include a spreadsheet with the object ID and attributed with the extent/type of aquatic resources impacted.
 - Aquatic resource maps marked on paper **USGS 7.5-minute topographic maps** or **Digital Orthophoto Quarter Quads (DOQQ)** printouts. Maps shall show the boundaries of all Project areas and extent/type of aquatic resources impacted. If this format is used, include a spreadsheet with the object ID and attributed with the extent/type of aquatic resources impacted.
- 2. Photo-Documentation:** Include a unique identifier, date stamp, written description of photo details, and latitude/longitude (in decimal degrees) or map indicating location of photo. Successive photos should be taken from the same vantage point to compare pre/post-construction conditions.

CITY OF IRVINE

HICKS CANYON WASH PROJECT

ATTACHMENT B—REPORTS AND NOTIFICATIONS

Report and Notification Cover Sheet
Project: Hicks Canyon Wash Project
Discharger: City of Irvine
Order No.: R8-2025-0043
Order Effective Date: September 12, 2025

Report Type Submitted
<input type="checkbox"/> Report Type 1: Annual Report
<input type="checkbox"/> Report Type 2: Commencement of Construction Report
<input type="checkbox"/> Report Type 3: Request for Notice of Completion Discharges Letter
<input type="checkbox"/> Report Type 4: Request for Notice of Project Complete Letter
<input type="checkbox"/> Report Type 5: Transfer of Property Ownership Report

"I certify under penalty of law that I have personally examined and am familiar with the information submitted in this document and all attachments and that, based on my inquiry of those individuals immediately responsible for obtaining the information, I believe that the information is true, accurate, and complete. I am aware that there are significant penalties for submitting false information, including the possibility of fine and imprisonment."

STATEMENT OF AUTHORIZATION (include if authorization has changed since application was submitted)

I hereby authorize _____ to act in my behalf as my representative in the submittal of this report, and to furnish upon request supplemental information in support of this submittal.

CITY OF IRVINE

HICKS CANYON WASH PROJECT

ATTACHMENT B—REPORTS AND NOTIFICATIONS

Report Type 1:	Annual Report
Purpose:	Notify the Santa Ana Water Board staff of Project status during both the active discharge and post-discharge monitoring periods.
When to Submit:	The reporting period is from January 1st to December 31st. The Discharger shall submit an annual report each year no later than January 31st for the previous reporting period if the Order's effective date is at least 90 days within the reporting period. Annual reporting shall continue until a <i>Notice of Project Complete Letter</i> is issued to the Discharger.
Report Contents:	<p>Part A:</p> <ol style="list-style-type: none"> 1. Project progress and schedule, including initial ground disturbance, site clearing and grubbing, road construction, site construction, and the implementation status of construction storm water BMPs. If construction has not started, provide an estimated start date and reasons for delay. <p>Part B:</p> <ol style="list-style-type: none"> 1. Planned date of initiation of compensatory mitigation site installation. 2. If installation is in progress, a map of what has been completed to date. 3. If the compensatory mitigation site has been installed, provide a final map and information concerning the attainment of performance standards contained in the compensatory mitigation plan.

Report Type 2:	Commencement of Construction
Purpose:	Notify the Santa Ana Water Board staff prior to the start of construction.
When to Submit:	Must be received at least seven (7) days to start of initial ground disturbance activities.
Report Contents:	<ol style="list-style-type: none"> 1. Date of commencement of construction. 2. Anticipated date when discharges to waters of the state will occur. 3. Project schedule milestones, including a schedule for onsite compensatory mitigation, if applicable.

CITY OF IRVINE

HICKS CANYON WASH PROJECT

ATTACHMENT B—REPORTS AND NOTIFICATIONS

Report Type 3:	Request for Notice of Completion of Discharge Letter
Purpose:	Notify Santa Ana Water Board staff that post-construction monitoring is required and that active Project construction, including any mitigation and Discharger-responsible compensatory mitigation, is complete.
When to Submit:	Must be received by Santa Ana Water Board staff within thirty (30) days following completion of all Project activities.
Report Contents:	<ol style="list-style-type: none"> 1. Status of storm water Notice of Termination(s), if applicable. 2. Status of post-construction storm water BMP installation. 3. Pre- and post-photo documentation of all Project activity sites where the discharge of dredge and/or fill/excavation was authorized. 4. Summary of deviation discharge quantities compared to initial authorized impacts to waters of the state, if applicable. 5. An updated monitoring schedule for mitigation for temporary impacts to waters of the state and Discharger-responsible compensatory mitigation during the post-discharge monitoring period, if applicable.

Report Type 4:	Request for Notice of Project Complete Letter
Purpose:	Notify Santa Ana Water Board staff that construction and/or any post-construction monitoring is complete, or is not required, and no further Project activity is planned.
When to Submit:	Must be received by Santa Ana Water Board staff within thirty (30) days following completion of all Project activities.
Report Contents:	Permittee-Responsible Compensatory Mitigation (if applicable) <ol style="list-style-type: none"> 1. A report establishing that the performance standards outlined in the compensatory mitigation plan have been met. 2. Status on the implementation of the long-term maintenance and management plan and funding of endowment. 3. Pre- and post-photo documentation of all compensatory mitigation sites. 4. Final maps of all compensatory mitigation areas (including buffers).

CITY OF IRVINE

HICKS CANYON WASH PROJECT

ATTACHMENT B—REPORTS AND NOTIFICATIONS

Report Type 5:	Transfer of Property Ownership
Purpose:	Notify Santa Ana Water staff of change in ownership of the Project or permittee-responsible mitigation area.
When to Submit:	At least 30 working days prior to the transfer of ownership.
Report Contents:	<ol style="list-style-type: none">1. A statement that the Discharger has provided the purchaser with a copy of this Order and that the purchaser understands and accepts:<ul style="list-style-type: none">• the Order's requirements and the obligation to implement them or be subject to administrative and/or civil liability for failure to do so; and• responsibility for compliance with any long-term BMP maintenance plan requirements in this Order.2. A statement that the Discharger has informed the purchaser to submit a written request to the Santa Ana Water Board to be named as the Discharger in a revised order.

ATTACHMENT C—SIGNATORY REQUIREMENTS

*All Documents Submitted in Compliance With this Order Shall Meet the Following
Signatory Requirements*

1. All applications, reports, or information submitted to the Santa Ana Water Board shall be signed and certified as follows:
 - a. For a corporation, by a responsible corporate officer of at least the level of vice-president.
 - b. For a partnership or sole proprietorship, by a general partner or proprietor, respectively.
 - c. For a municipality, or a State, federal, or other public agency, by either a principal executive officer or ranking elected official.
2. A duly authorized representative of a person designated in items 1.a through 1.c above may sign documents if:
 - a. The authorization is made in writing by a person described in items 1.a through 1.c above.
 - b. The authorization specifies either an individual or position having responsibility for the overall operation of the regulated activity.
 - c. The written authorization is submitted to the Santa Ana Water Board staff contact prior to submitting any documents listed in item 1 above.
3. Any person signing a document under this section shall make the following certification:

“I certify under penalty of law that I have personally examined and am familiar with the information submitted in this document and all attachments and that with the information submitted in this document and all attachments and that, based on my inquiry of those individuals immediately responsible for obtaining the information, I believe that the information is true, accurate, and complete. I am aware that there are significant penalties for submitting false information, including the possibility of fine and imprisonment.”