

CALIFORNIA REGIONAL WATER QUALITY CONTROL BOARD  
SANTA ANA REGION

3737 Main Street, Suite 500  
Riverside, CA 92501-3348  
(951) 782-4130

[Santa Ana Water Board Website](https://www.waterboards.ca.gov/santaana) (<https://www.waterboards.ca.gov/santaana>)

---

**[TENTATIVE] WASTE DISCHARGE REQUIREMENTS ORDER  
R8-2025-0080**

---

**ORDER INFORMATION**

**Status:** TENTATIVE  
**Program:** Dredged or Fill Materials Program  
**Discharger(s):** Richland Planned Communities, Inc  
**Project:** Golden Meadows Maintenance Project  
**County:** Riverside County  
**CIWQS WDID:** 332025-17  
**Prior Order(s):** R8-2021-0051

**CERTIFICATION**

I, ERIC T. LINDBERG, Executive Officer, hereby certify that the following is a full, true, and correct copy of the order adopted by the California Regional Water Quality Control Board, Santa Ana Region, on October 24, 2025.

---

ERIC T. LINDBERG  
Executive Officer

## TABLE OF CONTENTS

<b>Findings .....</b>	<b>1</b>
Project Description and Discharge Characteristics .....	2
Basin Plan and Regulatory Considerations.....	3
California Environmental Quality Act and Public Participation .....	5
<b>Requirements .....</b>	<b>5</b>
A. Discharge Specifications .....	5
B. Discharge Prohibitions.....	7
C. Provisions .....	8
<b>Attachment A—MAPS .....</b>	<b>12</b>
<b>Attachment B—REPORTS and NOTIFICATIONS .....</b>	<b>16</b>
<b>Attachment C—SIGNATORY REQUIREMENTS .....</b>	<b>21</b>

CALIFORNIA REGIONAL WATER QUALITY CONTROL BOARD  
SANTA ANA REGION

**ORDER R8-2025-0080**

WASTE DISCHARGE REQUIREMENTS  
FOR  
DISCHARGES OF DREDGED OR FILL MATERIALS TO WATERS OF THE STATE  
GOLDEN MEADOWS MAINTENANCE PROJECT  
RIVERSIDE COUNTY

**FINDINGS**

The Santa Ana Regional Water Quality Control Board (Santa Ana Water Board) hereby finds as follows:

1. This Order prescribes Waste Discharge Requirements (WDRs) for the Golden Meadows Maintenance Project (Project) of Richland Planned Communities, Inc. (Discharger).
2. Receiving waters and groundwater potentially impacted by this Project are protected in accordance with the operative Water Quality Control Plan for the Santa Ana River Basin (Basin Plan) and all other pertinent water quality plans and policies. The Basin Plan includes water quality standards, which consist of existing and potential beneficial uses of waters of the State, water quality objectives to protect those uses, and the state and federal antidegradation policies.
3. The Santa Ana Water Board has the authority to regulate the discharge of dredged and fill materials by prescribing WDRs pursuant to California Water Code section 13263. The Santa Ana Water Board has determined that WDRs are necessary to adequately address the Project's potential impacts on the beneficial uses of waters of the State.
4. This Order is issued in compliance with the State Water Resources Control Board's (State Water Board) *State Policy for Water Quality Control: State Wetland Definition and Procedures for Discharges of Dredged or Fill Material to Waters of the State* (Dredge and Fill Procedures), as revised on April 6, 2021.
5. On October 15, 2021, the Santa Ana Water Board adopted Order R8-2021-0051<sup>1</sup> for the Golden Meadows Project. Order R8-2021-0051 authorized 0.892 acre of impacts to waters of the State associated with the residential development, and grading within an unnamed stream channel for the construction of two water quality

---

<sup>1</sup> Order R8-2021-0051 was issued to Richland Communities, Inc.

basins, reinforced concrete box and pipe culvert, and associated headwalls and riprap, and natural open space drainage, which is expected to be completed by March 2027. The direct impacts to water of the State associated with Order R8-2021-0051 were mitigated through the purchase of mitigation credits from the Riverpark Mitigation Bank.

6. On May 30, 2025, the United States Army Corps of Engineers determined that no waters of the United States were present within the Project boundary.
7. On June 27, 2025, on behalf of the Discharger, FirstCarbon Solutions, Inc. submitted an *Application for Discharges of Dredged or Fill Material to Waters of the State* (Application) for the Project, which was assigned Santa Ana Water Board WDID No. 332025-17.
8. The Application was deemed complete on August 14, 2025.

#### **Project Description and Discharge Characteristics**

9. The Project's purpose is the long-term management and maintenance of 9.45 acres of a natural open space drainage and drainage basin associated with the Golden Meadows residential development.
10. The proposed maintenance activities are necessary to maintain the design capacity and grade of the natural open space drainage and drainage basin to provide adequate flood control protection while ensuring the long-term protection of waters of the State.
11. The Project is located in the City of Menifee in Riverside County within the Golden Meadows residential development. The Project site is located north of Wickerd Road, south of Garbani Road/Daniel Road, east of Evans Road, and west of Sherman Road. The Project components (i.e., the onsite drainage maintenance areas) total 9.45 acres and fall partially, or completely within portions of Assessor Parcel Numbers 360-300-002 and right-of-way.
12. The 10.4-acre Project site contains a total of 9.45 acres of waters of the State that consist of a natural open space drainage and drainage basin that runs south to north from the central portion of the Project site to the northwest.
13. Much of the Project site has been disturbed by cultivation and grazing. The onsite natural open space drainage consists primarily of disturbed/ruderal areas and comprises of California buckwheat scrub and chamise chaparral.
14. The proposed ongoing maintenance activities include repair of culverts and sediment removal within waters of the State. The authorized activities are described below:

- a. **Channel and Bank Repairs:** Removal of excess sediments, debris, and trash from the channel bottom. In-kind repair and backfill of erosion or scouring by placing fill material along the channel side slopes.
  - b. **Outfall/Culvert Structures:** The in-kind repair/maintenance of culverts and outfall structures, including stabilizing surfaces where damaged, and fill/repair erosional rills or any other erosion adjacent to the outfall structures. In-kind repair and replacement of grade control structures.
  - c. **Vegetation Management:** Removal of vegetation that prevents proper conveyance of surface water flows downstream or compromises the integrity of the drainage and basin, including general trimming or mowing, and herbicide application.
15. Sediment accumulation will be monitored and removed when accumulated sediments pose a clear and present danger of flooding to the surrounding areas.
16. The unnamed natural open space drainage and basin represent a total of 9.45 acres of ephemeral waters of the State and are a tributary to Salt Creek.
17. The proposed maintenance activities, including sediment and vegetation removal, structure repair, and herbicide application, have the potential to cause short-term water quality impacts. The potential concerns include sediment mobilization, discharge of petroleum products from heavy equipment, concrete washout and slurry from structural repairs, native vegetation loss, and the potential overspray or misapplication of herbicides and fertilizers. Trash, debris, and disturbed soils from access road work and may also discharge into nearby drainages during storm events.
18. The Order includes a set of best management practices and discharge prohibitions designed to minimize impacts to waters of the State, erosion, and prevent pollutant releases associated with the Project.
19. The Project will not cause permanent impacts to waters of the State. No compensatory mitigation is required. The Discharger will restore disturbed slopes to their as-built conditions/contours.

### **Basin Plan and Regulatory Considerations**

20. Salt Creek has the following designated intermittent beneficial uses (existing or potential): Water Contact Recreation, Non-contact Water Recreation, Warm Freshwater Habitat, and Wildlife Habitat.
21. This Order is adopted pursuant to Water Code section 13263, subdivision (a), which provides that the Santa Ana Water Board may, after any necessary hearing, prescribe requirements (WDRs) as to the nature of any proposed discharge with

relation to the conditions existing in the disposal area or receiving waters upon, or into which, the discharge is made or proposed. The WDRs are required to implement any relevant water quality control plans that have been adopted and take into consideration the beneficial uses to be protected, the water quality objectives reasonably required for that purpose, other waste discharges, the need to prevent nuisance, and the provisions of Water Code section 13241.

22. This Order is also adopted pursuant to Water Code section 13267, subdivision (b)(1) which authorizes the Santa Ana Water Board to require technical and monitoring program reports, submitted under penalty of perjury, from persons discharging or proposing to discharge waste within the Santa Ana Region, in connection with the issuance of WDRs. This Order incorporates requirements for water quality monitoring and Project reporting, which are necessary to ensure that the discharge of dredged and fill material complies with WDRs and is protective of the water quality. In accordance with Water Code section 13267, the burden, including costs, of generating these reports bears a reasonable relationship to the need for the report and the benefits to be obtained from them.
23. The Santa Ana Water Board has considered the federal and state antidegradation policies (State Water Board Resolution 68-16 and 40 C.F.R § 131.12) and finds that the discharge permitted under this Order is consistent with those policies. Filling wetlands, riparian areas, headwaters, and other waters causes partial or complete loss of the beneficial uses provided by those waters. This Order requires that impacts to waters of the state be mitigated through avoidance and minimization to the maximum extent practicable. The mitigation requirements in this Order comply with the State Water Board's Dredge and Fill Procedures.
24. This Order is subject to modification or revocation upon administrative or judicial review, including review and amendment pursuant to Water Code section 13330 and California Code of Regulations, title 23, section 2050 et seq. Additionally, the Santa Ana Water Board reserves the right to suspend, cancel, or modify and reissue this Order, after providing notice to the Discharger, if the Santa Ana Water Board determines that the Project fails to comply with any of the conditions of this Order; or when necessary to implement any new or revised water quality standards and implementation plans adopted or approved pursuant to the Porter-Cologne Water Quality Control Act (Wat. Code, § 13000 et seq.).
25. The provisions of this Order are severable and, if any provision of this Order or the application of any provisions of this Order to any circumstance is held invalid, the application of such provision to other circumstances and the remainder of this Order shall not be affected thereby.
26. A request for modification, revocation and re-issuance, or termination of this Order or a notification of planned changes or anticipated noncompliance does not stay any requirements of this Order.

27. The requirements prescribed herein do not authorize the commission of any act causing injury to the property of another, nor protect the Discharger from liabilities under federal, state, or local laws, nor guarantee the Discharger a capacity right in the receiving waters.
28. This Order does not convey any property rights of any sort, or any exclusive privilege. The ability to discharge waste is a privilege, not a right; nothing in this Order shall create a vested right to continue any discharges authorized herein, which are subject to rescission or modification. (Wat. Code, § 13263, subd. (g).)

### **California Environmental Quality Act and Public Participation**

29. The Project is exempt from the procedural requirements of the California Environmental Quality Act (CEQA) (Pub. Resources Code, § 21000 et seq.), per the CEQA Guidelines (Cal. Code Regs., tit. 14, 15000 et seq.). Specifically, the Project is subject to the categorical exemptions for “existing facilities” (§ 15301) and “minor alterations to land” (§ 15304).
30. The Santa Ana Water Board has notified the Discharger and other interested agencies and persons of its intent to prescribe WDRs for the discharge and has provided them with an opportunity for public hearing to submit comments.
31. The Santa Ana Water Board, in a public meeting, heard and considered all comments pertaining to the WDRs for the discharge.

### **REQUIREMENTS**

**IT IS HEREBY ORDERED**, pursuant to Water Code sections 13263 and 13267, that the Discharger shall comply with the following:

#### **A. Discharge Specifications**

1. Activities associated with the Project shall not cause or threaten to cause a condition of nuisance, contamination or pollution as defined in Water Code section 13050.
2. The groundwater in the vicinity of the Project shall not be degraded resulting from the Project activities or placement of fill materials for the Project.
3. If construction dewatering discharges, including temporary stream diversions, are necessary to carry out the Project, the Discharger shall enroll and comply with the Santa Ana Water Board Order R8-2020-0006, *General Waste Discharge Requirements for Discharges to Surface Waters that Pose an Insignificant (De Minimis) Threat to Water Quality*.

4. Discharges of fill materials shall be limited to the placement of native fill and “inert waste”, as defined in California Code of Regulations, title 27, section 20230. Fill material other than native soil shall not be discharged as part of the project.
5. The vegetation removal activities shall meet the following specifications:
  - a. Native vegetation shall be avoided to the maximum extent possible.
  - b. Vegetation removal shall avoid uprooting vegetation whenever practicable in order to maintain soil stability.
  - c. No living native vegetation with a diameter at breast height in excess of 3 inches and located above the maintenance baseline shall be removed without prior approval by the Santa Ana Water Board staff.
6. Construction and post-construction best management practices (BMPs) shall be implemented.
  - a. There shall be no onsite fueling, lubrication, changing of oil or other equipment fluids and their filters, or any other maintenance or storage of construction equipment within or next to drainage areas or other surface runoff conveyances.
  - b. All equipment using gas, oil, hydraulic fluid, or other petroleum products shall be inspected for leaks prior to use and shall be monitored for leakage. Stationary equipment (e.g., motors, pumps, generator, etc.) shall be positioned over drip pans or other types of containment.
  - c. Motorized equipment shall not be maintained or parked near any stream crossing or channel, in such a manner that petroleum products or other pollutants might enter these areas under any flow conditions. Vehicles and equipment shall not be driven or operated in waters of the State, except as necessary to complete the proposed Project.
  - d. All equipment must be free of sediment, debris, and foreign matter. Any equipment used in direct contact with surface water shall be cleaned prior to use.
  - e. Spill containment supplies shall be onsite in all work areas to allow immediate remediation of fuel, oil, hydraulic fluid, or similar leaks and spills.
  - f. All stockpiles shall be placed outside of drainage areas or other surface waters and protected in such a manner to be prevented from entering waters of the State.



- g. Upon completion of individual maintenance activities, trash and all construction-related materials shall be removed and deposited at a legal point of disposal.
- h. In-water work shall be avoided to the maximum extent practicable during the rainy season (October-April) when surface water flows are present. If work is necessary to occur when surface water flows are present, water quality BMPs such as check dams, shall be in place to protect water quality downstream.
- i. Repair and maintenance activities shall be conducted from the top of slope to the maximum extent practicable. Bed and banks disturbance shall be minimized by limiting equipment to designated access roads. Linear travel within the channel bottom shall be minimized to the maximum extent practicable.
- j. The use of herbicides, fertilizers, pesticides, or other agricultural chemicals within the waters of the State or adjacent to the Project areas shall be limited to vector and invasive species control and shall comply with State regulations. Herbicide and pesticide applications shall follow specific instructions on the labels for safe handling, application, storage, and disposal.

## **B. Discharge Prohibitions**

1. Impacts to waters of the State from the Project shall not exceed quantities identified in Finding 12 and findings herein.
2. No permanent impacts to waters of the State are authorized under this Order.
3. All repairs shall be in-kind and shall not exceed as-built conditions.
4. In emergency situations, repairs and construction shall be kept to the minimum necessary to alleviate the immediate emergency and correct an imminent threat to public safety, properties, and public service facilities.
5. Except as expressly authorized in another WDRs order, waste shall not be discharged in a manner or location other than as described in the Application referenced in Finding 7 or the findings herein.
6. Except for authorized fill material discharges to waters of the state, the direct discharge of wastes, including rubbish, refuse, bark, sawdust, or any other solid or liquid wastes, into water channels, surface waters, or any place where they would contact or be eventually transported to surface waters, including flood plains, is prohibited.

7. The discharge of oil or other floating materials from any activity in quantities sufficient to cause deleterious bottom deposits, turbidity, or discoloration in surface waters is prohibited.
8. The discharge of silt, sand, clay, or other earthen materials from any activity in quantities sufficient to cause deleterious bottom deposits, turbidity, or discoloration in surface waters is prohibited.
9. Discharges to surface waters of wastes or pollutants that are not authorized by this Order or regulated by a separate permit are prohibited.

### C. Provisions

1. The Discharger shall maintain a copy of this Order at the Project site so that it is always available to site operating personnel. Key operating personnel shall be familiar with the Order's content.
2. The Discharger shall take all reasonable steps to minimize or prevent any discharge that has a reasonable likelihood of adversely affecting human health and the environment.
3. This Order is not transferable to any person without written approval by the Santa Ana Water Board's Executive Officer. Prior to any change in ownership, the Discharger shall notify the Santa Ana Water Board's Executive Officer in writing at least 30 days in advance. The notice shall include a written transfer agreement between the existing owner and the new owner. At a minimum, the transfer agreement shall contain a specific date for transfer of responsibility for compliance with this Order and an acknowledgment that the new owner or operator is liable for compliance with this Order from the date of transfer. The Santa Ana Water Board may require modification or revocation and reissuance of this Order to change the name of the Discharger and incorporate other requirements as may be necessary under the Water Code.
4. The Discharger shall submit an **annual report each year by September 15th**. The contents of the report shall include Project status and schedule (including all repairs, maintenance activities and impacts), compliance monitoring, survey observations, photos from the photo stations, and a summary of all tasks completed and the implementation status of BMPs during the active discharge period.
5. Annual reporting shall continue until a *Notice of Project Complete Letter* is issued to the Discharger.
6. The Discharger shall submit a *Request for Notice of Project Complete Letter* when construction and any required post-construction monitoring is complete and no further Project activities will occur. This request shall be submitted to

Santa Ana Water Board staff within 30 days following the completion of all Project activities. Upon approval of the request, Santa Ana Water Board staff will issue to the Discharger a *Notice of Project Complete Letter* and prepare a draft order terminating this Order for approval by the Santa Ana Water Board. The *Notice of Project Complete Letter* will end the post-discharge monitoring period, and either the expiration or Board approval of the termination of this Order will end the associated annual fees.

7. The Discharger shall retain records of all monitoring information, including all calibration and maintenance records, copies of all reports required by this Order, and records of all data used to complete the application for this Order. Records shall be maintained for a minimum of five years from the date of the sample, measurement, report, or application. Records may be maintained electronically. This period may be extended during for any unresolved enforcement action or litigation regarding this discharge or when requested by the Santa Ana Water Board.
8. The Discharger shall report any noncompliance that may endanger human health or the environment. Information shall be provided orally to the Santa Ana Water Board office and the Office of Emergency Services within twenty-four (24) hours of when the Discharger becomes aware of the incident. If noncompliance occurs outside of business hours, the Discharger shall leave a message on the Santa Ana Water Board's office voicemail. A written report shall also be provided within five business days of the time when the Discharger becomes aware of the incident. The written report shall contain a description of the noncompliance and its cause, the period of noncompliance, the anticipated time to achieve full compliance, and the steps taken or planned to reduce, eliminate, and prevent recurrence of the noncompliance. All other forms of noncompliance shall be reported with the Discharger's next scheduled Monitoring Report, or earlier if requested by the Executive Officer.
9. Before initiating a new discharge or making a material change in the character, location, or volume of an existing discharge, the Discharger shall report all pertinent information in writing to the Santa Ana Water Board, and if required by the Santa Ana Water Board, obtain revised requirements before any modifications are implemented.
10. The Discharger shall allow the Santa Ana Water Board, or an authorized representative, upon presentation of credentials and other documents as may be required by law to:
  - a. Enter premises where a regulated facility or activity is located or conducted, or where records are kept under the requirements of this Order;

- b. Access and copy any records that are kept under the requirements of this Order;
  - c. Inspect any facility, equipment (including monitoring and control equipment), practices, or operations regulated or required under this Order; and
  - d. Photograph, sample, or monitor for the purpose of assuring compliance with this Order or as otherwise authorized by the Water Code.
11. This Order becomes effective on the date of adoption by the Santa Ana Water Board.
12. Based on the annual reports, if the Santa Ana Water Board staff determine that there is a change to the proposed discharges or threat to water quality, a new dredge and fill application in accordance with California Code of Regulations, title 23, division 3, chapter 9 will be required to maintain the activity coverage. The application, with filing fee, will be discussed between the Discharger and Santa Ana Water Board staff regarding any need for additional information and changes in fees prior to the issuance of new WDRs.

#### **LIST OF ATTACHMENTS**

Attachment A—MAPS  
Attachment B—REPORTS and NOTIFICATIONS  
Attachment C—SIGNATORY REQUIREMENTS

#### **ENFORCEMENT**

The Santa Ana Water Board reserves the right to take any enforcement action authorized by law. Accordingly, failure to timely comply with any provisions of this Order may subject the Discharger to enforcement action. Such actions include, but are not limited to, the assessment of administrative civil liability pursuant to Water Code sections 13323, 13268, and 13350, a Time Schedule Order (TSO) issued pursuant to Water Code sections 13300 and 13308, or referral to the California Attorney General for recovery of judicial civil liability.

#### **ADMINISTRATIVE REVIEW**

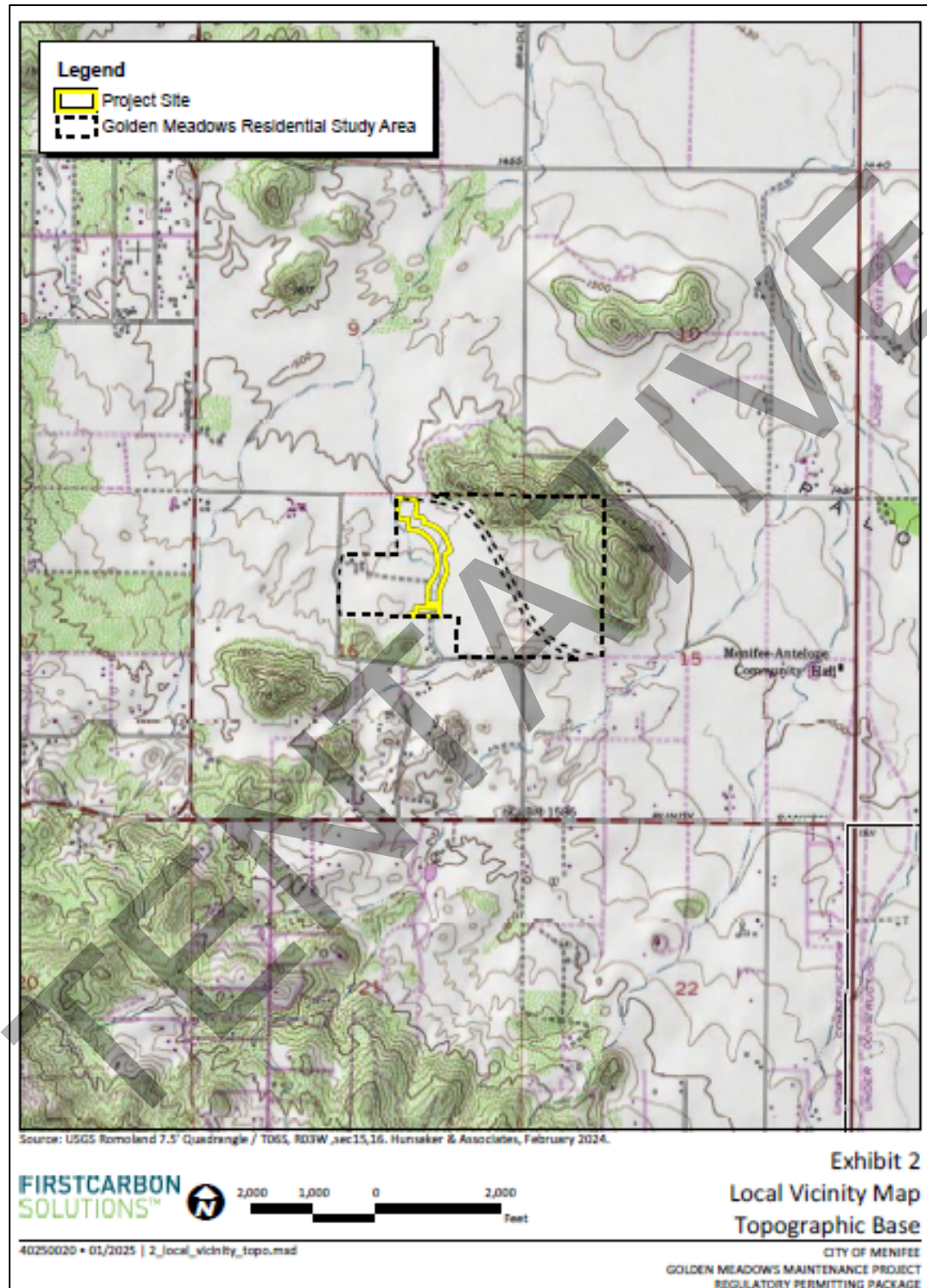
Any person aggrieved by this Santa Ana Water Board action may petition the State Water Board for review in accordance with Water Code section 13320 and California Code of Regulations, title 23, section 2050 et seq. To be timely, the petition must be received by the State Water Board by 5:00 pm on the 30th day after the date of this Order; if the 30th day falls on a Saturday, Sunday or state holiday, the petition must be received by the State Water Board by 5:00 pm on the next business day. The law and

regulations applicable to filing petitions are available on the [State Water Board website](http://www.waterboards.ca.gov/public_notices/petitions/water_quality) ([http://www.waterboards.ca.gov/public\\_notices/petitions/water\\_quality](http://www.waterboards.ca.gov/public_notices/petitions/water_quality)). Copies will also be provided upon request.

TENTATIVE

### Figure 1: Regional Location Map





**Figure 2: Local Vicinity Map Topographic**



Figure 3: Local Vicinity Map Aerial





**Figure 4: Maintenance Area**

## ATTACHMENT B—REPORTS AND NOTIFICATIONS

### Copies of this Form

To identify your Project, it is necessary to include a copy of the Project-specific Report and Notification Cover Sheet below with your report (see below). Please retain a copy for your records.

### Report Submittal Instructions

- 1) Check the box on the *Report and Notification Cover Sheet* next to the report or notification you are submitting.
  - a) Part A (Annual Report): Submitted annually from the anniversary of the Project effective date until a *Notice of Project Complete Letter* is issued.
  - b) Part B (Project Status Notifications): Used to notify the Santa Ana Water Board of the status of the Project schedule that may affect Project billing.
- 2) Sign the *Report and Notification Cover Sheet* and attach all information requested for the Report Type.
- 3) Electronic Report Submittal Instructions:
  - a) Submit signed *Report and Notification Cover Sheet* and required information via email to: [RB8-401Reporting@waterboards.ca.gov](mailto:RB8-401Reporting@waterboards.ca.gov)
  - b) Include in the subject line of the email: Order R8-2025-0080 and Report Type Name
  - c) Additionally, electronically submit Annual Reports using the State Water Board's California Integrated Water Quality System (CIWQS) Program website [California Integrated Water Quality System Project \(CIWQS\) | California State Water Resources Control Board](#). The CIWQS website will provide additional information for report submittal in the event there will be a planned service interruption for electronic submittal.

### Definition of Reporting Terms

- 1) **Active Discharge Period:** The active discharge period begins with the effective date of this Order and ends on the date that the Discharger receives a *Notice of Completion of Discharges Letter* or, if no post-construction monitoring is required, a *Notice of Project Complete Letter*. The Active Discharge Period includes all elements of the Project, including site construction and restoration, and any Discharger-responsible compensatory mitigation construction.
- 2) **Request for Notice of Project Complete Letter:** This request by the Discharger to the Santa Ana Water Board staff pertains to projects that either have completed post-construction monitoring and achieved performance standards or have no

#### Definition of Reporting Terms

post-construction monitoring requirements and no further Project activities are planned. Santa Ana Water Board staff will review the request and send a *Project Complete Letter* to the Discharger upon approval. Termination of annual invoicing of fees will correspond with the expiration or termination by Board action of this Order.

#### Map/Photo Documentation Information

When submitting maps or photos, please use the following formats.

##### **1. Map Format Information:**

Preferred map formats of at least 1:24000 (1" = 2000') detail (listed in order of preference):

- **GIS shapefiles:** The shapefiles shall depict the boundaries of all Project areas and extent of aquatic resources impacted. Each shape should be attributed with the extent/type of aquatic resources impacted. Features and boundaries should be accurate to within 33 feet (10 meters). Identify datum/projection used and, if possible, provide map with a North American Datum of 1983 (NAD83) in the California Teale Albers projection in feet.
  - **Google KML files** saved from Google Maps: My Maps or Google Earth Pro. Maps shall show the boundaries of all Project areas and extent/type of aquatic resources impacted. Include URL(s) of maps. If this format is used, include a spreadsheet with the object ID and attributed with the extent/type of aquatic resources impacted.
  - **Other electronic format** (CAD or illustration format) that provides a context for location (inclusion of landmarks, known structures, geographic coordinates, or USGS DRG or DOQQ). Maps shall show the boundaries of all Project areas and extent/type of aquatic resources impacted. If this format is used, include a spreadsheet with the object ID and attributed with the extent/type of aquatic resources impacted.
- 2. Photo-Documentation:** Include a unique identifier, date stamp, written description of photo details, and latitude/longitude (in decimal degrees) or map indicating location of photo. Successive photos should be taken from the same vantage point to compare pre/post-construction conditions.

TENTATIVE ORDER R8-2025-0080  
RICHLAND PLANNED COMMUNITIES INC  
GOLDEN MEADOWS MAINTENANCE PROJECT  
**ATTACHMENT B—REPORTS AND NOTIFICATIONS**

18

Report and Notification Cover Sheet
<b>Project:</b> GOLDEN MEADOWS MAINTENANCE PROJECT
<b>Discharger:</b> RICHLAND PLANNED COMMUNITIES, INC
<b>Order No.:</b> R8-2025-0080
<b>Order Effective Date:</b> October 24, 2025

Report Type Submitted
<input type="checkbox"/> Report Type 1: Annual Report
<input type="checkbox"/> Report Type 2: Noncompliance with Water Quality Standards Report
<input type="checkbox"/> Report Type 3: Request for Notice of Project Complete Letter
<input type="checkbox"/> Report Type 4: Transfer of Property Ownership Report

"I certify under penalty of law that I have personally examined and am familiar with the information submitted in this document and all attachments and that, based on my inquiry of those individuals immediately responsible for obtaining the information, I believe that the information is true, accurate, and complete. I am aware that there are significant penalties for submitting false information, including the possibility of fine and imprisonment."

\_\_\_\_\_  
\_\_\_\_\_

STATEMENT OF AUTHORIZATION (include if authorization has changed since application was submitted)

I hereby authorize \_\_\_\_\_ to act in my behalf as my representative in the submittal of this report, and to furnish upon request supplemental information in support of this submittal.

\_\_\_\_\_

TENTATIVE ORDER R8-2025-0080  
RICHLAND PLANNED COMMUNITIES INC  
GOLDEN MEADOWS MAINTENANCE PROJECT  
**ATTACHMENT B—REPORTS AND NOTIFICATIONS**

19

<b>Report Type 1</b>	<b>Annual Report</b>
<b>Purpose:</b>	Notify the Santa Ana Water Board staff of Project status during both the active discharge and post-discharge monitoring periods.
<b>When to Submit:</b>	Annual reports shall be submitted each year by September 15th.
<b>Report Contents:</b>	Including, but not limited to the following: Project progress and schedule, including ground disturbance, site clearing, site construction, total sediment removed in cubic yards, implementation status of BMPs, and description if no maintenance activities were conducted.

<b>Report Type 2</b>	<b>Noncompliance with Water Quality Standards Report</b>
<b>Purpose:</b>	Notify Santa Ana Water Board staff that a violation of compliance with water quality standards has occurred.
<b>When to Submit:</b>	The Discharger shall report any event that causes a violation of water quality standards within three (3) working days of the noncompliance event notification to Santa Ana Water Board staff.
<b>Report Contents:</b>	The report shall include: the cause; the location shown on a map; and the period of noncompliance, including exact dates and times. If the noncompliance has not been corrected, include: the anticipated time it is expected to continue; the steps taken or planned to reduce, eliminate, and prevent recurrence of the noncompliance; and any monitoring results, if required by Santa Ana Water Board staff.



<b>Report Type 3</b>	<b>Request for Notice of Project Complete Letter</b>
<b>Purpose:</b>	Notify Santa Ana Water Board staff that construction and/or any post-construction monitoring is complete, or is not required, and no further Project activity is planned.
<b>When to Submit:</b>	Must be received by Santa Ana Water Board staff within thirty (30) days following completion of all Project activities.
<b>Report Contents:</b>	<ol style="list-style-type: none"> <li>1. Status of post-construction BMPs.</li> <li>2. Pre- and post-photo documentation of all Project activity sites where the discharge of dredge and/or fill/excavation was authorized.</li> <li>3. Summary of re-seeding and invasive species monitoring.</li> </ol>

<b>Report Type 4</b>	<b>Transfer of Property Ownership</b>
<b>Purpose:</b>	Notify Santa Ana Water staff of change in ownership of the Project or Discharger-responsible mitigation area.
<b>When to Submit:</b>	At least 30 working days prior to the transfer of ownership.
<b>Report Contents:</b>	<ol style="list-style-type: none"> <li>1. A statement that the Discharger has provided the purchaser with a copy of this Order and that the purchaser understands and accepts:           <ul style="list-style-type: none"> <li>• the Order's requirements and the obligation to implement them or be subject to administrative and/or civil liability for failure to do so; and</li> <li>• responsibility for compliance with any long-term BMP maintenance plan requirements in this Order.</li> </ul> </li> <li>2. A statement that the Discharger has informed the purchaser to submit a written request to the Santa Ana Water Board to be named as the Discharger in a revised order.</li> </ol>

### **ATTACHMENT C—SIGNATORY REQUIREMENTS**

*All Documents Submitted in Compliance With this Order Shall Meet the Following Signatory Requirements*

1. All applications, reports, or information submitted to the Santa Ana Water Board shall be signed and certified as follows:
  - a. For a corporation, by a responsible corporate officer of at least the level of vice-president.
  - b. For a partnership or sole proprietorship, by a general partner or proprietor, respectively.
  - c. For a municipality, or a State, federal, or other public agency, by either a principal executive officer or ranking elected official.
2. A duly authorized representative of a person designated in items 1.a through 1.c above may sign documents if:
  - a. The authorization is made in writing by a person described in items 1.a through 1.c above.
  - b. The authorization specifies either an individual or position having responsibility for the overall operation of the regulated activity.
  - c. The written authorization is submitted to the Santa Ana Water Board staff contact prior to submitting any documents listed in item 1 above.
3. Any person signing a document under this section shall make the following certification:

“I certify under penalty of law that I have personally examined and am familiar with the information submitted in this document and all attachments and that with the information submitted in this document and all attachments and that, based on my inquiry of those individuals immediately responsible for obtaining the information, I believe that the information is true, accurate, and complete. I am aware that there are significant penalties for submitting false information, including the possibility of fine and imprisonment.”