

Sustainable Groundwater Management Act: Kaweah Subbasin

Proposed Resolution 2025-XXX

December 2, 2025

Item No. 6



Office of Sustainable Groundwater Management

Language Interpretation In Person

Interpretación en persona

ਵਿਅਕਤੀਗਤ ਤੌਰ 'ਤੇ ਪੰਜਾਬੀ ਭਾਸ਼ਾ ਵਿੱਚ ਵਿਆਖਿਆ

Please visit the table outside this room for a headset or if you have technical difficulties.

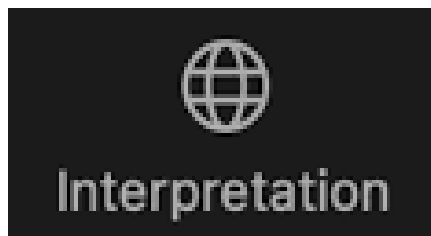
Diríjase a la mesa fuera de esta sala para solicitar un auricular o si tiene dificultades técnicas.

ਇਸ ਕਮਰੇ ਦੇ ਬਾਹਰ ਮੇਜ਼ 'ਤੇ ਜਾਓ ਜੇਕਰ ਤੁਹਾਨੂੰ ਹੈੱਡਸੈੱਟ ਦੀ ਲੋੜ ਹੈ ਜਾਂ ਤੁਹਾਨੂੰ ਕੋਈ ਤਕਨੀਕੀ ਮੁਸ਼ਕਲ ਪੇਸ਼ ਆ ਰਹੀ ਹੈ।



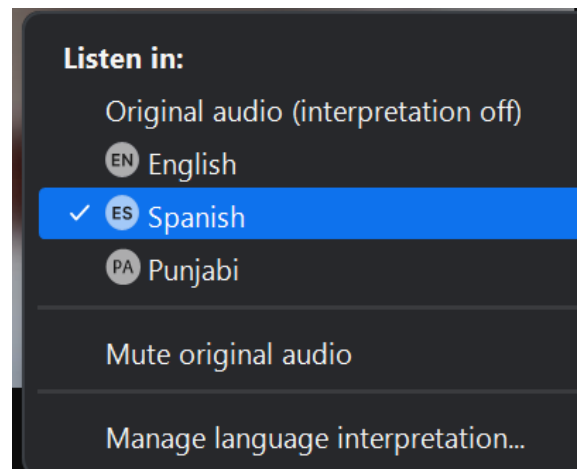
Opción de Interpretación en Zoom

- Seleccione el icono de interpretación desde los controles de la pantalla
- Seleccione español (*Spanish*)
- Seleccione la opción para poner el audio original en silencio (*Mute Original Audio*)



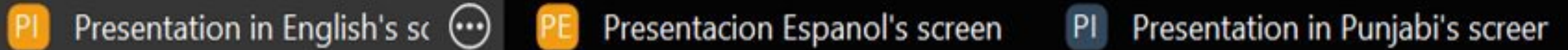
Language Interpretation through Zoom

- Click the Interpretation icon in your meeting controls
- Select Spanish OR English OR Punjabi
- Mute Original Audio



ਜ਼ੂਮ ਰਾਹੀਂ ਭਾਸ਼ਾ ਅਨੁਵਾਦ

- ਆਪਣੇ ਮੀਟਿੰਗ ਕੰਟਰੋਲਾਂ ਵਿੱਚ ਅਨੁਵਾਦ ("Interpretation") ਆਈਕਨ ਤੇ ਕਲਿੱਕ ਕਰੋ
- ਸਪੈਨਿਸ਼ ਜਾਂ ਅੰਗਰੇਜ਼ੀ ਜਾਂ ਪੰਜਾਬੀ ਚੁਣੋ
- ਮੂਲ ਆਡੀਓ ਨੂੰ ਮਿਊਟ (ਆਵਾਜ਼ ਬੰਦ) ਕਰੋ



PI Presentation in English's screen PE Presentacion Espanol's screen PI Presentation in Punjabi's screen

To view slides in your preferred language, click on "Presentation in English," "Presentación en español," or "Presentation in Punjabi" at the top of the screen.

Para ver las diapositivas en su idioma preferido, haga clic en "Presentation in English", "Presentación en español", o "Presentation in Punjabi" en la parte superior de la pantalla.

ਸਲਾਈਡਾਂ ਨੂੰ ਆਪਣੀ ਪਸੰਦੀਦਾ ਭਾਸ਼ਾ ਵਿੱਚ ਦੇਖਣ ਲਈ, ਸਕ੍ਰੀਨ ਦੇ ਉੱਪਰ "Presentation in English," "Presentación en español," or "Presentation in Punjabi" 'ਤੇ ਕਲਿੱਕ ਕਰੋ।

For technical assistance, email

Board.Clerk@waterboards.ca.gov

Si necesita ayuda técnica, envíe un mensaje electrónico a

Board.Clerk@waterboards.ca.gov

ਤਕਨੀਕੀ ਸਹਾਇਤਾ ਲਈ, ਇਸ ਵੈੱਬਸਾਈਟ 'ਤੇ ਈਮੇਲ ਕਰੋ

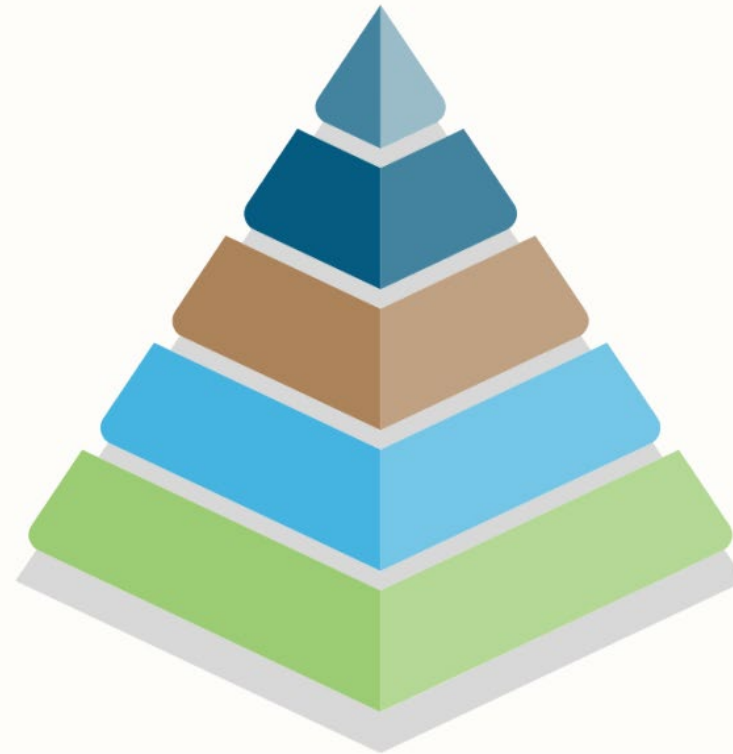
Board.Clerk@waterboards.ca.gov



The GSAs amended their groundwater level sections to minimize impacts to drinking water users

- Revised undesirable result definition and minimum thresholds
- Dry well susceptibility analysis
- Operational flexibility
- Robust mitigation program

Sustainable Management Criteria Priorities

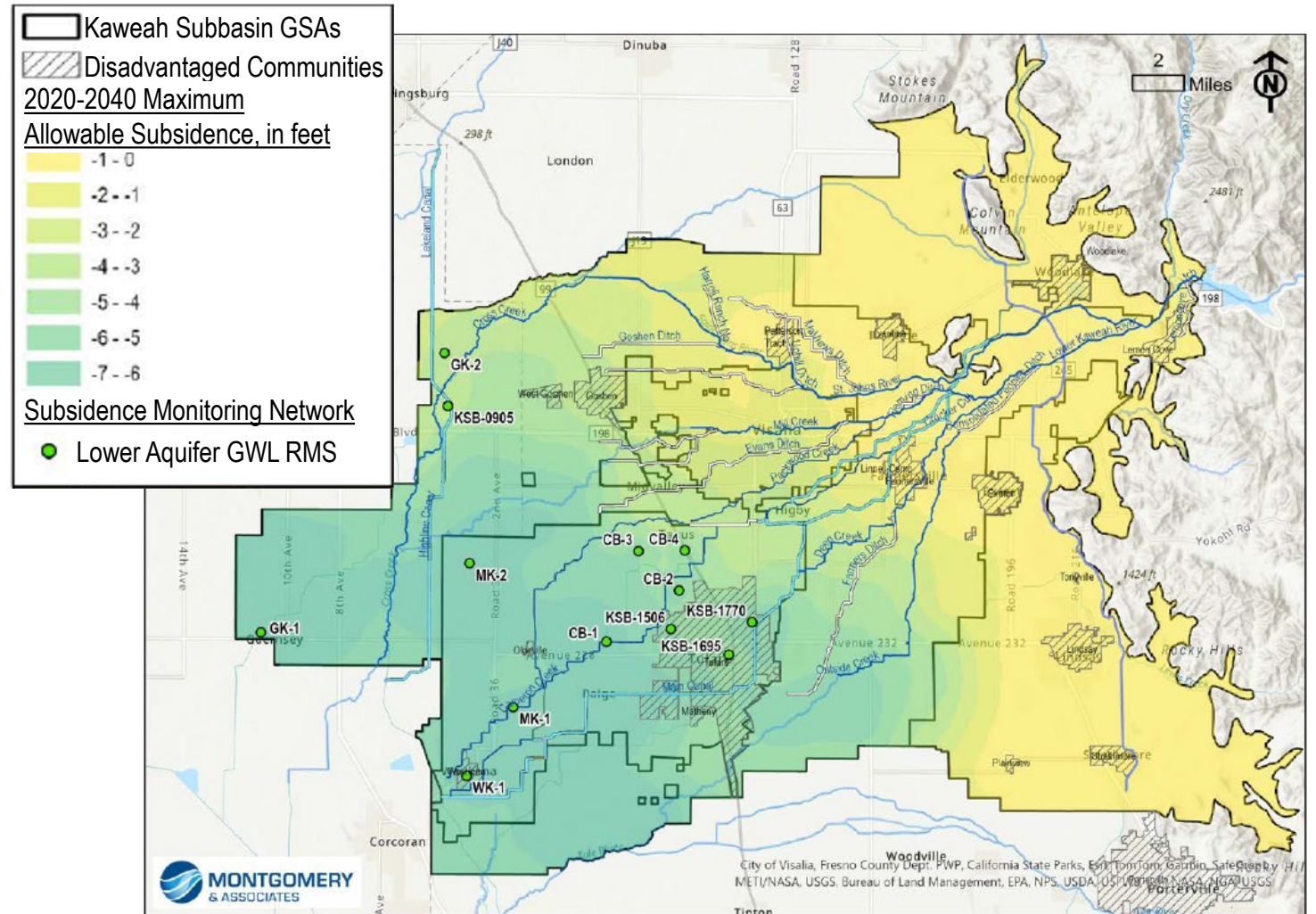


- 01** Consistent with DWR/SWRCB Recommendations
- 02** Use of best available data and analytical tools
- 03** Consideration for all beneficial users, uses, and property interests
- 04** Stakeholder Support
- 05** Subbasin-wide Consistency



The GSAs should continue to refine approach for sustainable management criteria relationships

- Described the impacts of minimum thresholds on land subsidence and groundwater storage
- Need more explanation on impacts to groundwater quality and interconnected surface water



Modified after 2024 MKGSP, Appendix 5E, Figure 4. Kaweah Subbasin Lower Aquifer Representative Monitoring Sites and Subsidence Minimum Threshold



The GSAs included steps to stop active subsidence and mitigate for impacts

- Developed new sustainable management criteria (SMC) for the Friant-Kern Canal
- Updated subsidence model and groundwater level SMC to avoid subsidence in lower aquifer
- Added mitigation funding and support for critical infrastructure

**KAWEAH SUBBASIN
MITIGATION PROGRAM VERSION 1.0
TECHNICAL ASSISTANCE TRACK**

Available June 2024 for EKGSA Available June 2025 for MKGSA & GKGSA

WHO CAN SUBMIT A CLAIM?

agricultural well owners critical infrastructure owners non-potable industrial well owners other non-drinking water well owners

2024 Coordination Agreement, Appendix 6-2. Kaweah Subbasin Mitigation Program Version 1.0



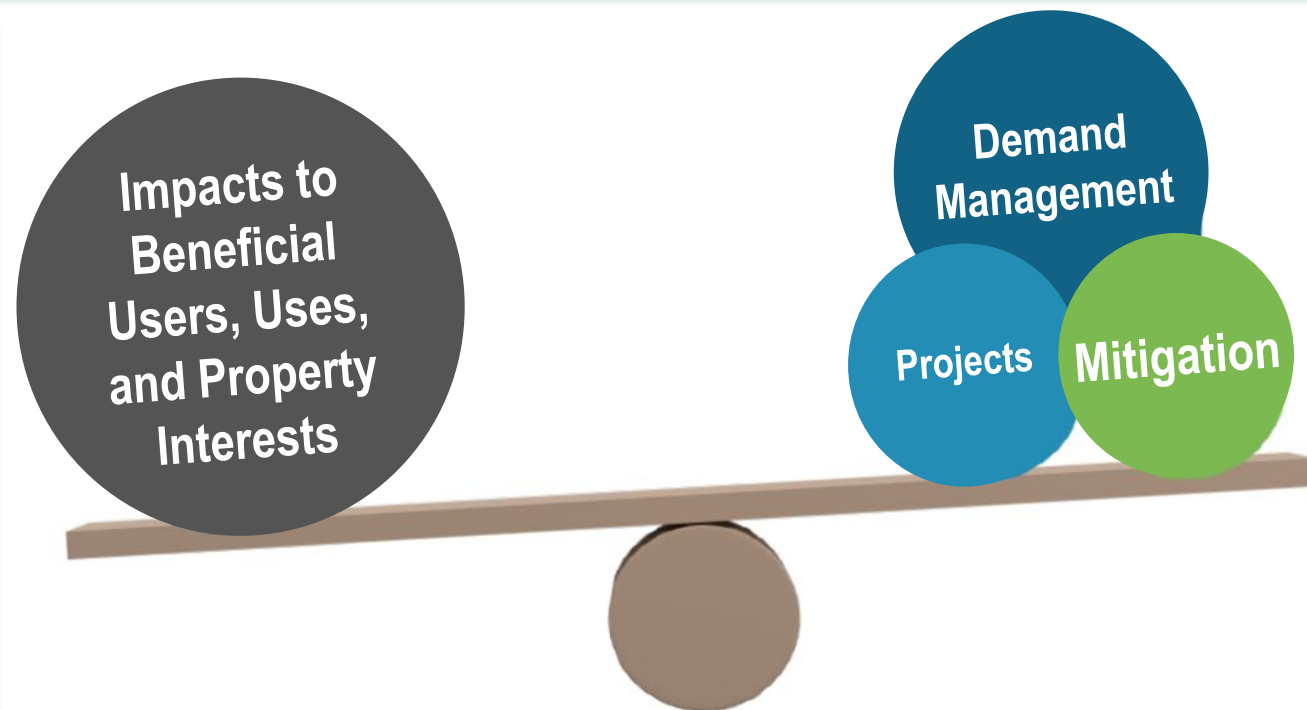
The GSAs revised groundwater quality undesirable result definitions and sustainable management criteria

Undesirable Result:

- (1) 10 separate RMS wells with exceedances due to groundwater management after January 1, 2015, OR
- (2) GSAs cannot meet mitigation demand for domestic wells

Sustainable Management Criteria:

- Expanded list of constituents of concern
- Set minimum thresholds at drinking water standards (except for sodium and boron)



Modified after 2024 Coordination Agreement, Appendix 6-4: Degraded Water Quality SMC Technical Memorandum



The GSPs still need revisions for groundwater quality monitoring and mitigation

Improvements included:

- Developed Minimum Threshold Exceedance Policy and Well Registration Program
- Added mitigation for groundwater quality impacts

Revisions needed:

- Fill monitoring data gaps

KAWEAH SUBBASIN

MITIGATION PROGRAM VERSION 1.0

DRINKING WATER WELL MITIGATION TRACK

WHO CAN SUBMIT A CLAIM?



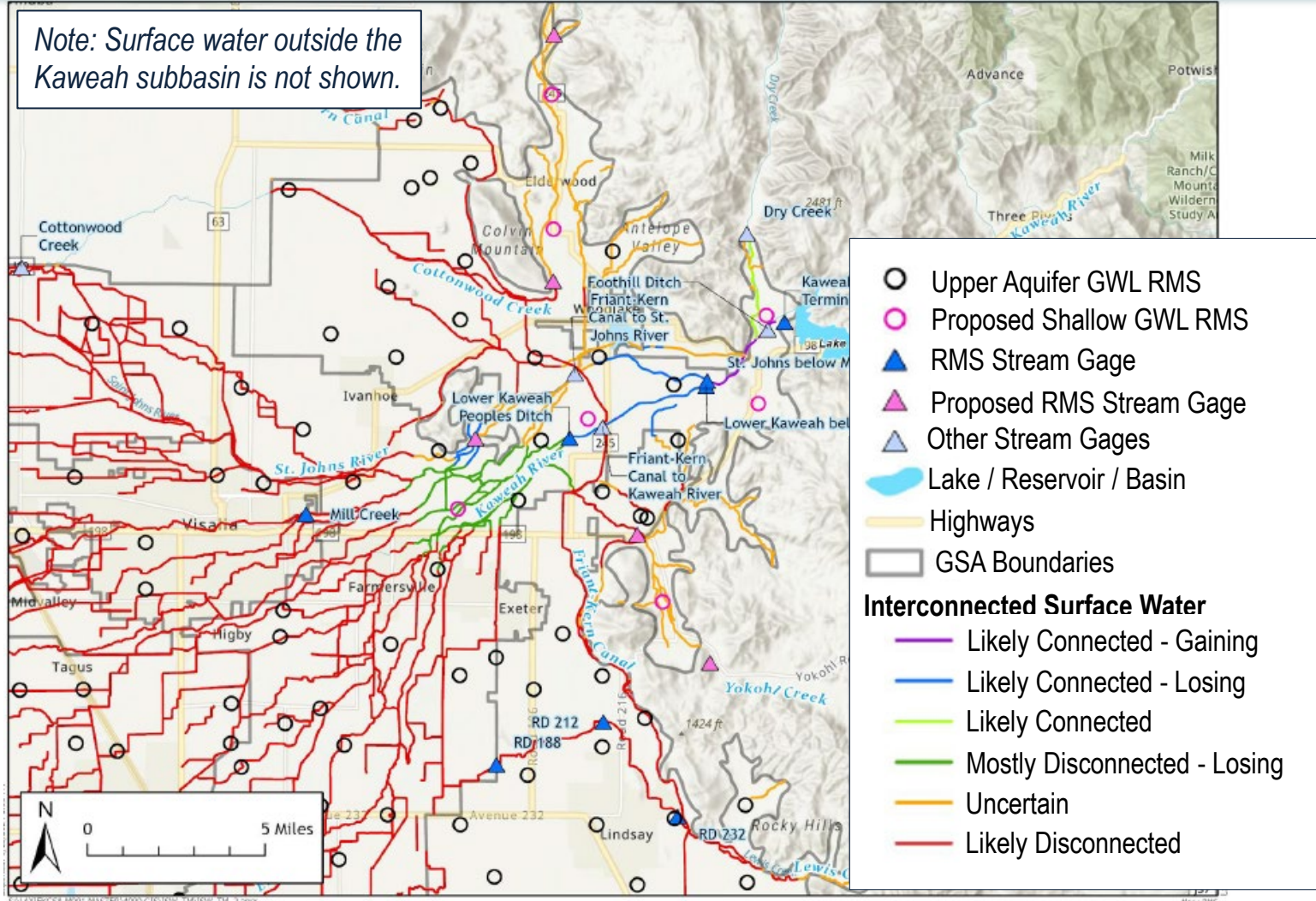
Available
June 2024

Modified after 2024 Coordination Agreement, Appendix 6-2. Kaweah Subbasin Mitigation Program Version 1.0



The GSAs used monitoring data to refine pumping effects on interconnected surface water

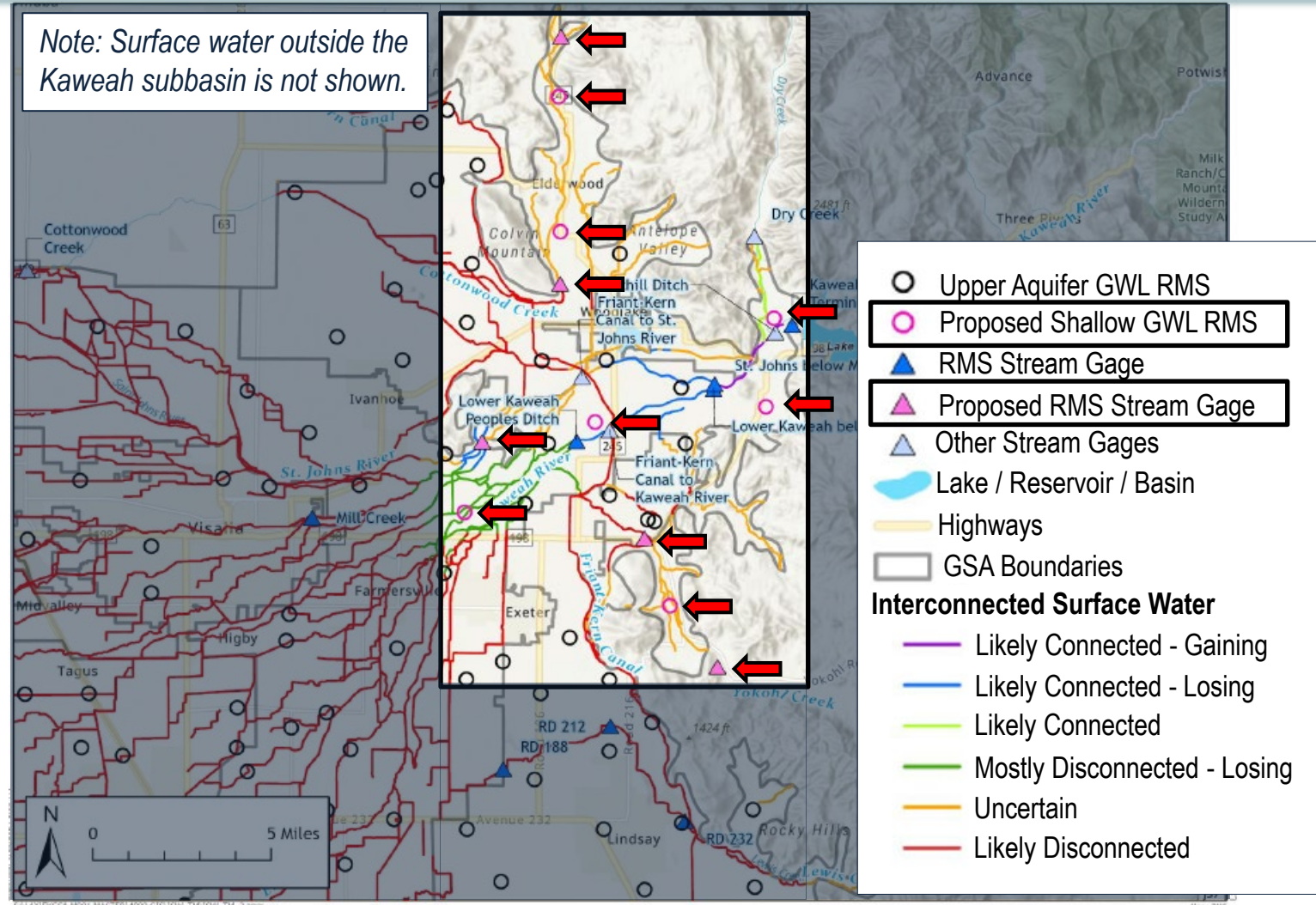
- Refined understanding of beneficial uses and users of interconnected surface water
- Established monitoring network and frequency
- Developed ISW Data Gap Work Plan that identified future monitoring site locations



The GSPs should be revised as GSAs fill interconnected surface water data gaps

The GSAs set preliminary minimum thresholds that considered impacts to beneficial uses/users.

- Further development of model to estimate depletions
- Implementation of Data Gap Work Plan and future DWR guidance



Spotlight: Mitigation



Image source: <https://ekgsa.org/2024-state-of-the-kaweah-subbasin/>

Staff Recommendations for the Kaweah Subbasin





The Staff Assessment was released for public comment on October 13th.

Public comments were due on November 12th.



**Further define
sustainability indicator
relationships**



**Clarify land subsidence
technical and funding
assistance**



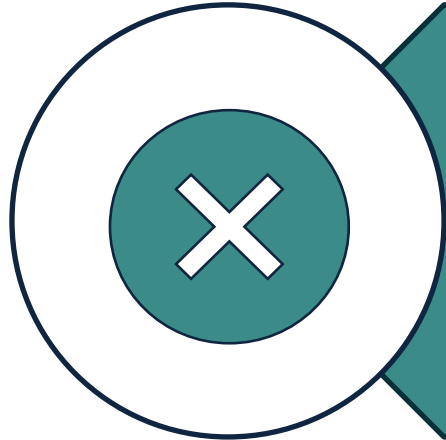
**Update groundwater quality
monitoring network**



**Revise interconnected
surfaced water minimum
thresholds**



Staff Recommendations for Board Action



Probationary
designation not
warranted



Return Kaweah
Subbasin to DWR's
jurisdiction

Office of Sustainable Groundwater Management

SGMA@waterboards.ca.gov

www.waterboards.ca.gov/sgma

