

Update on Emergency Water Conservation Regulation

Office of Research, Planning, and Performance

March 7, 2017 – Item 5



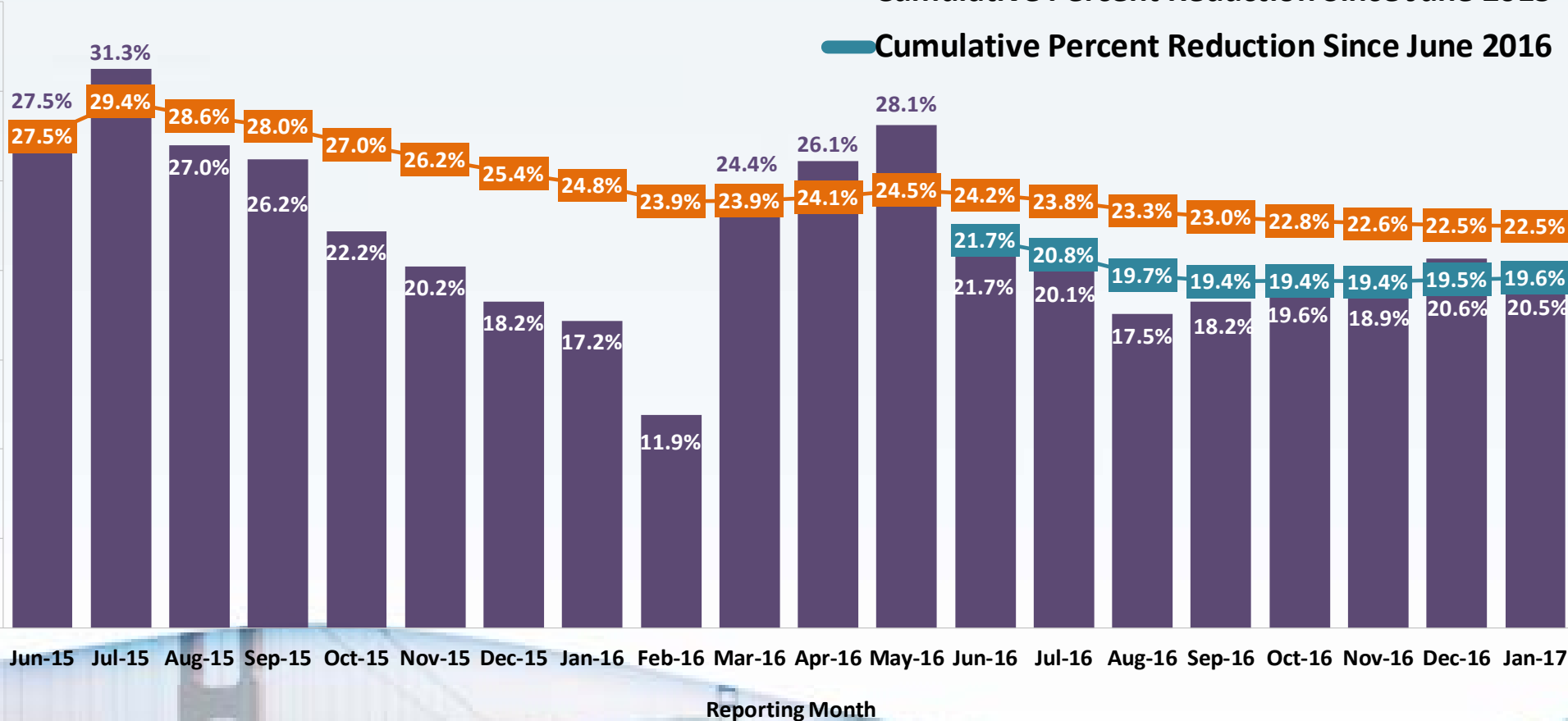
January 2017 Status of Implementation

- Water production data collected since June 2014
- Urban water conservation requirements since June 2015
- Stress test for setting standards since June 2016
- **January 2017 statewide conservation 20.5 percent compared to January 2013 baseline**



Statewide Water Production Percent Reduction (Compared to 2013)

- Monthly Percent Reduction
- Cumulative Percent Reduction Since June 2015
- Cumulative Percent Reduction Since June 2016



Average Statewide January 2017 R-GPCD = 58.1

Statewide Cumulative Savings

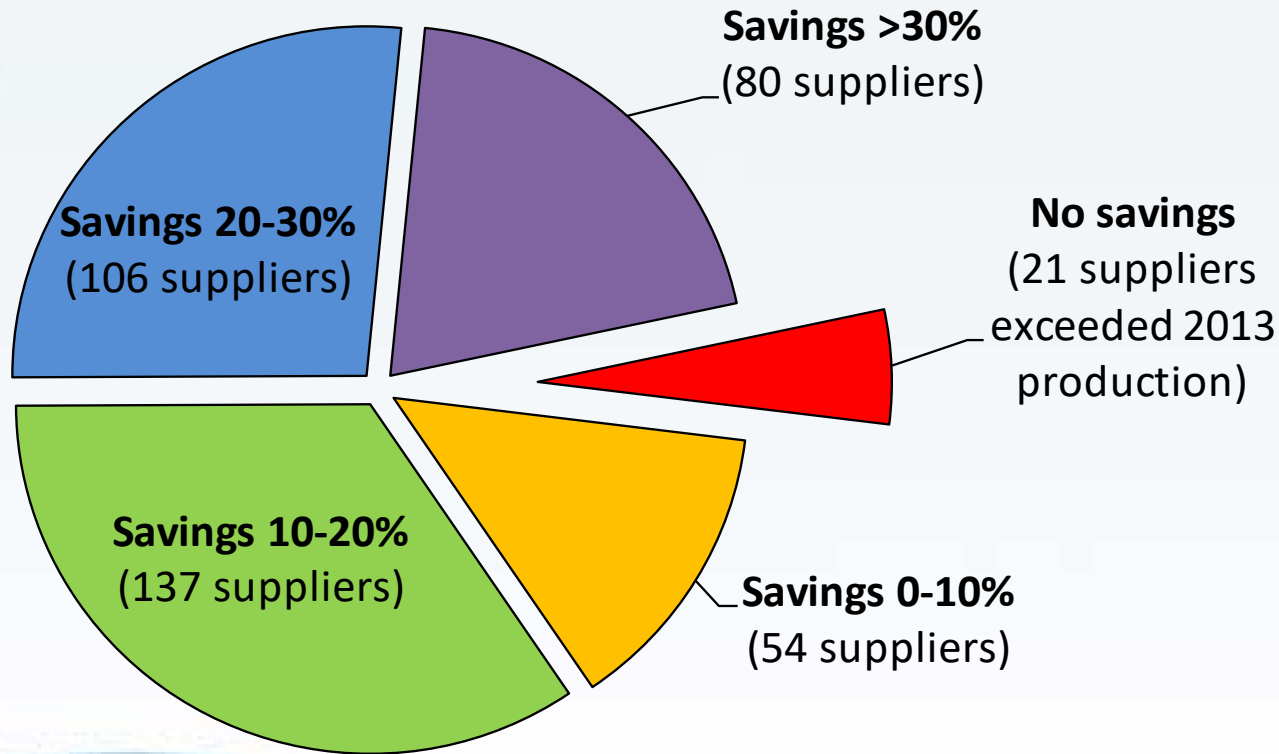
(June 2015 – January 2017)

- 22.5 percent since June 2015:
2,510,387 acre-feet (818 billion gallons)
 - Savings is enough to provide 12.6 million Californians (32% of state population) with water for one year
- *19.6 percent since June 2016:
901,166 acre feet (293 billion gallons)*



Monthly Water Savings Achieved by Suppliers

(January 2017)



Next Steps

- Urge cool/wet season conservation messaging
- Board extended regulation in February 2017
- Opportunity for suppliers to self-certify supply reliability:
 - “Stress test” submissions due March 15
 - Standards effective February 1st



**Save Our Water
and Our Trees!**

saveourwater.com/trees