

Emergency Conservation Regulation Update

Office of Research, Planning, and Performance

July 7, 2015



Status of Implementation

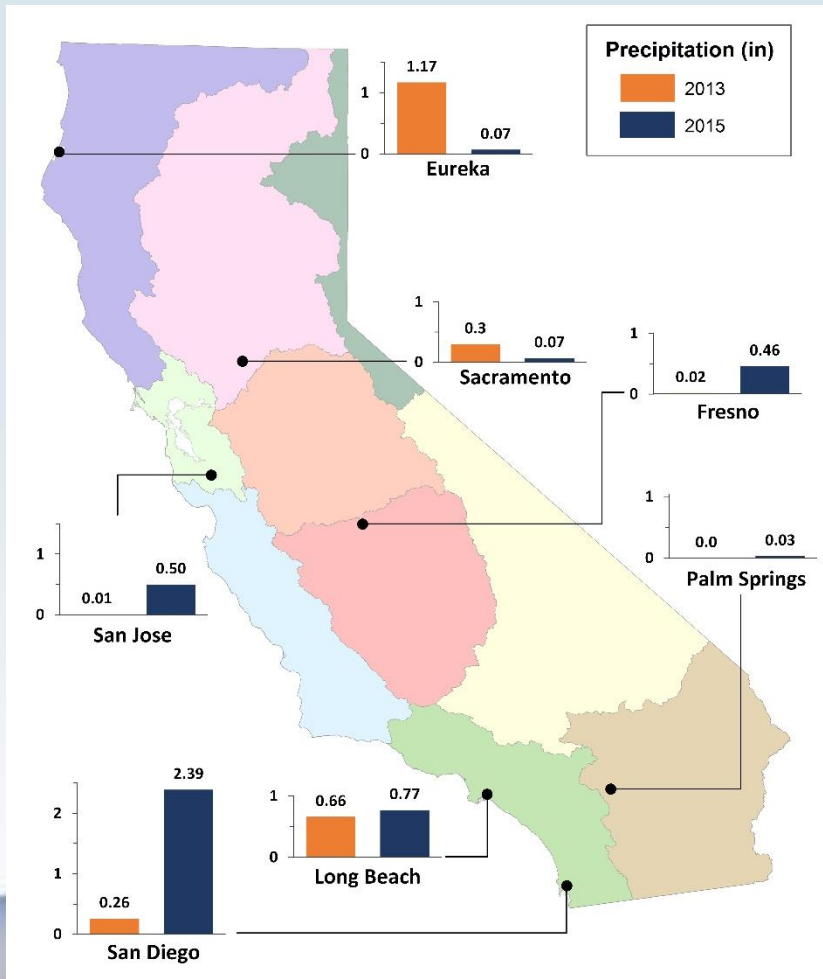
- Water production data collected from June 2014 through May 2015 (12 months)
- 400 (of 411) urban water suppliers submitted May production numbers
- Final month reported under March 27 emergency regulation; conservation standards are effective June 1, 2015



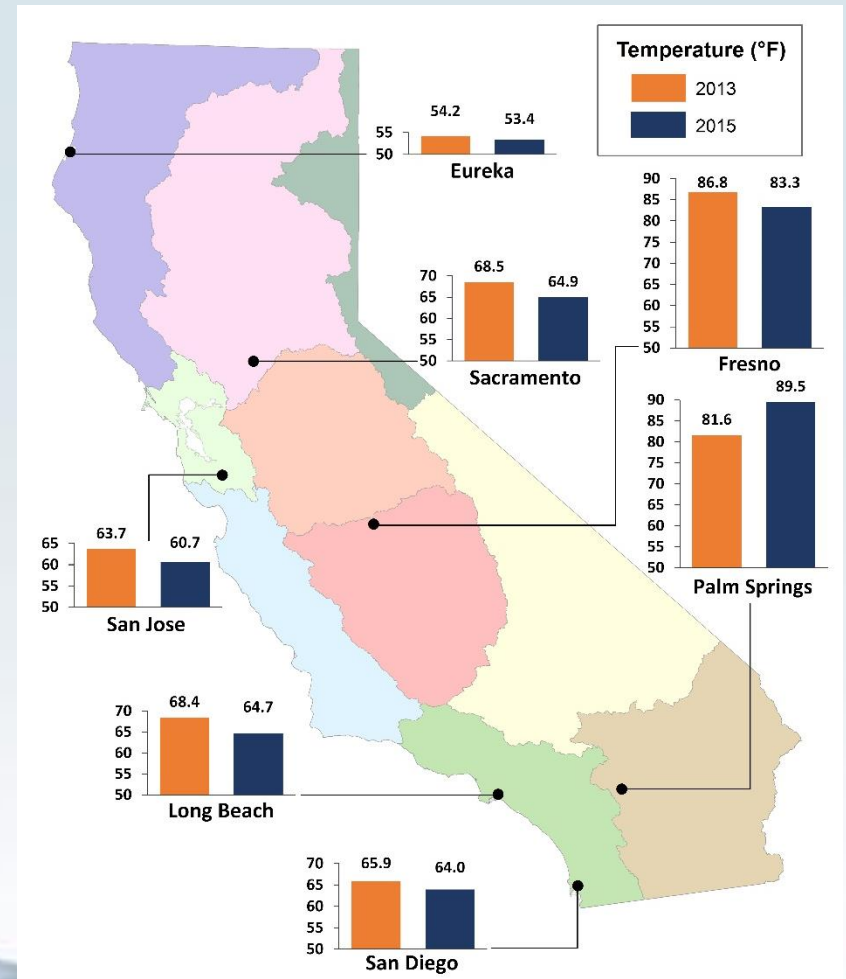
May Weather Conditions

(Select Cities)

Precipitation



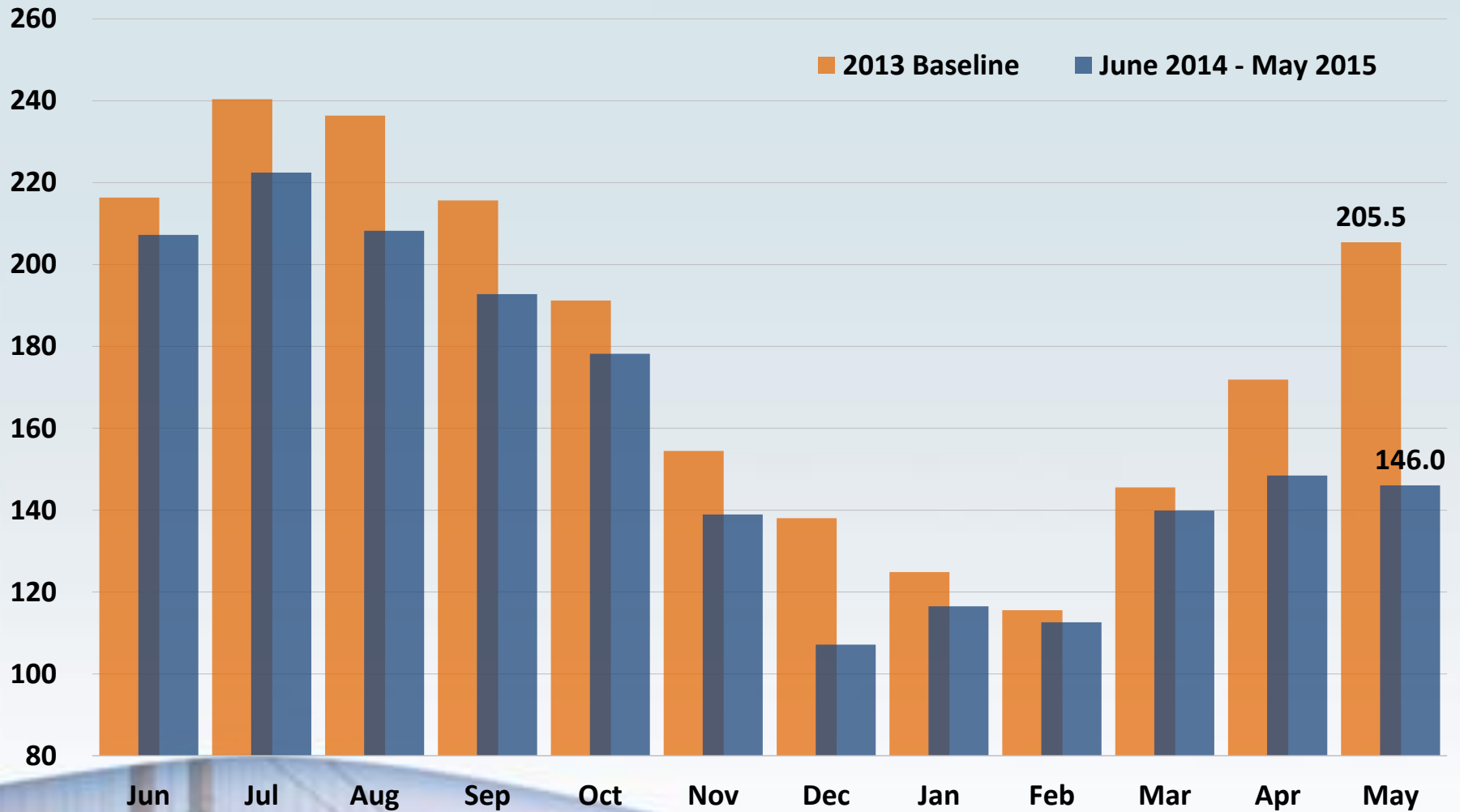
Temperature



Statewide, May 2015 was wetter and cooler than May 2013

Statewide Water Conservation Results

Water Production June 2014 - May 2015 (Billion Gallons)

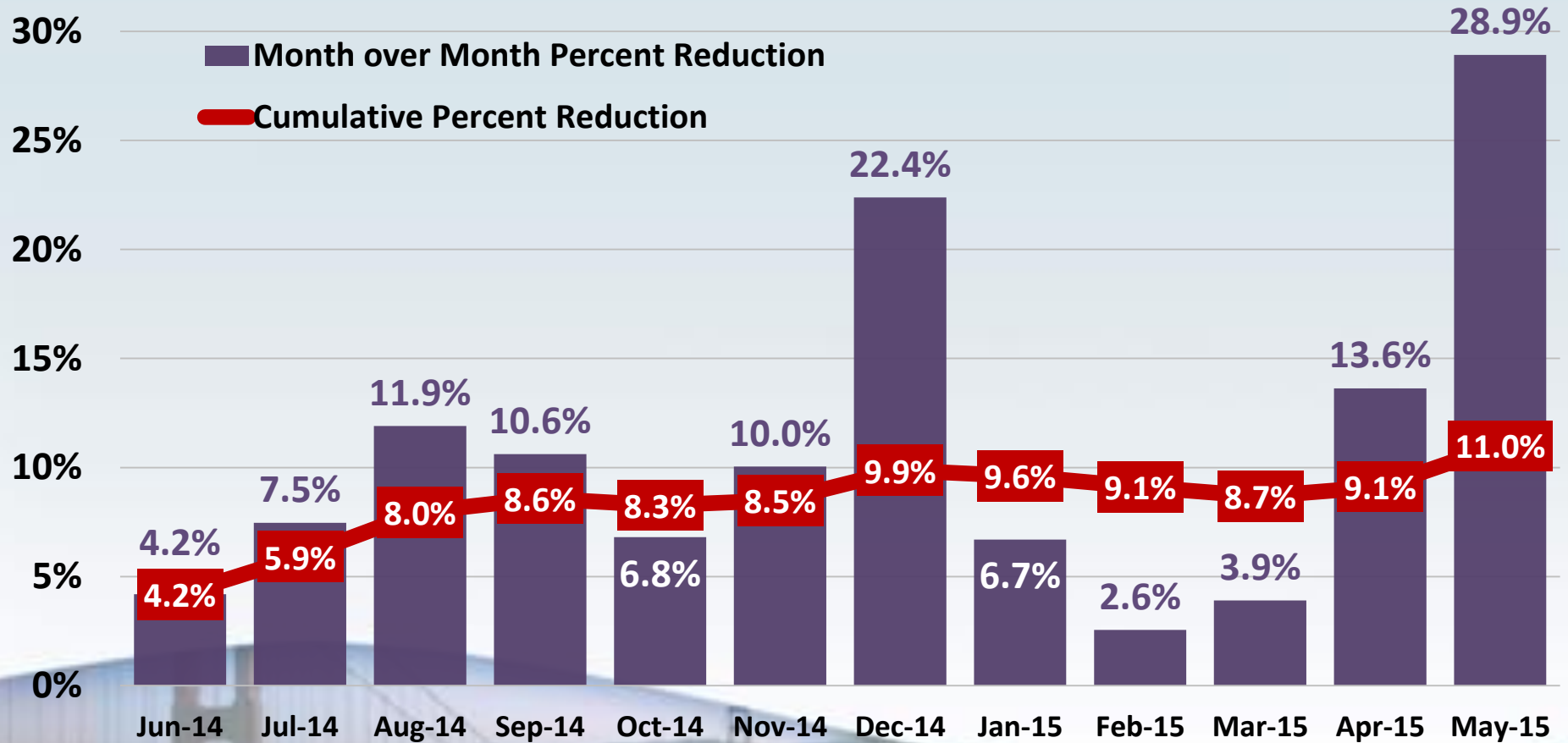


**Over 237 Billion Gallons Saved June 2014 – May 2015,
enough to provide 2.38 million Californians with water for 1 year**

Statewide Water Conservation Results

Water Production Percentage Reduction

(Compared to 2013)

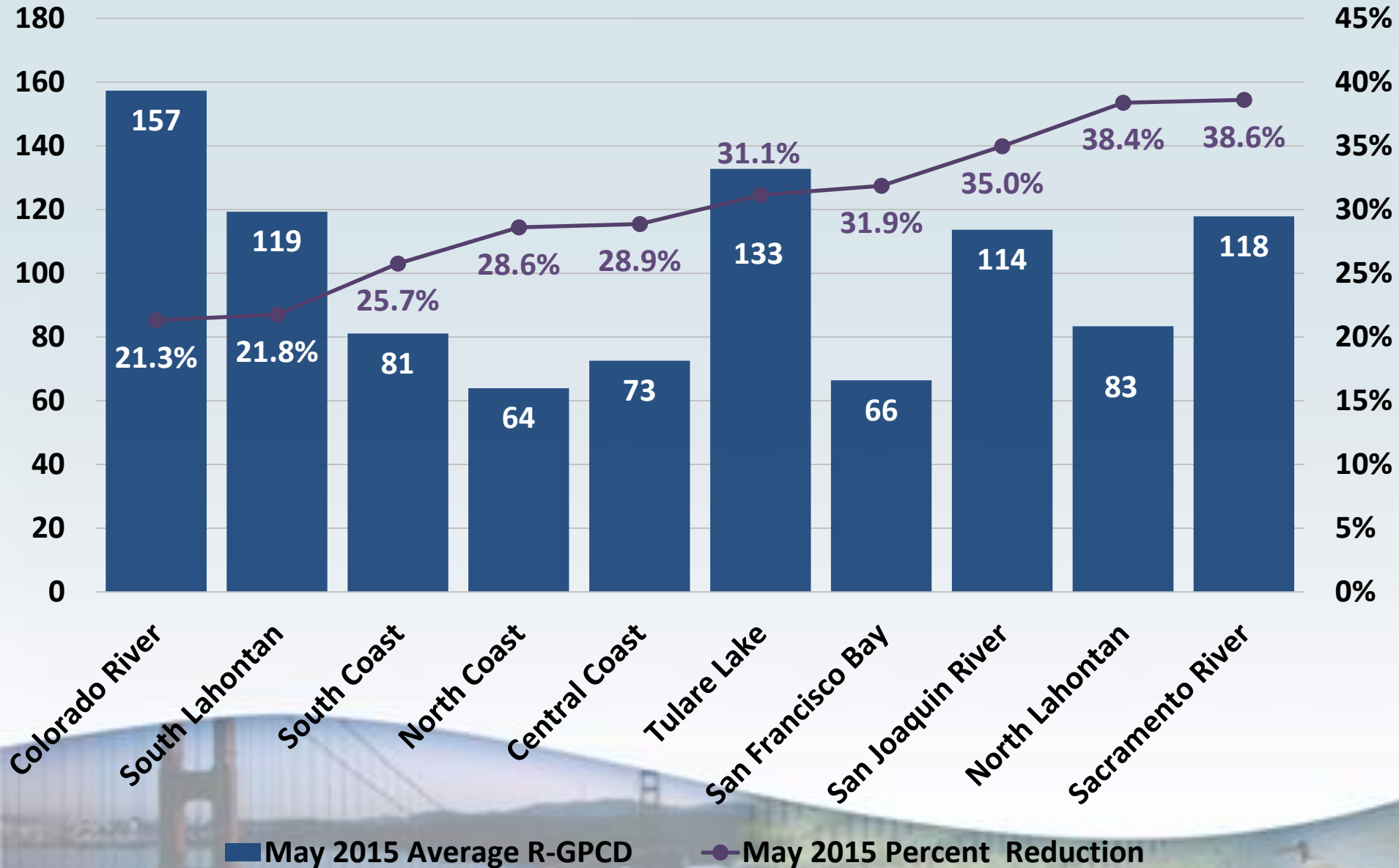


May 2015 Residential Gallons per Capita per Day

- Highest R-GPCD = 348
- Lowest R-GPCD = 39
- Average statewide May 2015 R-GPCD = 87.5,
down from 90.5 in April
- 55 GPCD is the performance standard for **indoor** use
 - 33 suppliers representing about 2.6 million people report
May total (indoor and outdoor) R-GPCD less than 55

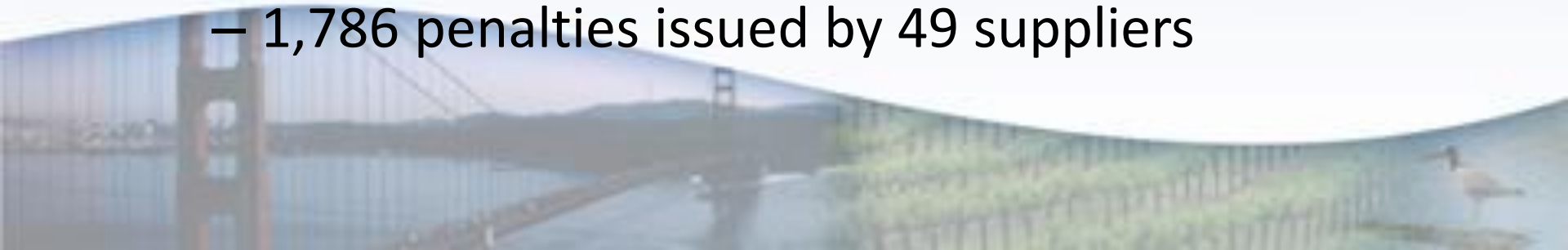


May 2015 Water Conservation Results



May 2015 Water Supplier Irrigation Restrictions and Enforcement Actions

- 60 suppliers reported no restrictions on the number of days per week outdoor irrigation is allowed
- Water Supplier Enforcement Actions
 - 28,555 water waste complaints submitted to 346 suppliers
 - 36,159 formal warnings for water waste issued by 269 suppliers
 - 1,786 penalties issued by 49 suppliers



Noteworthy June 2014 – May 2015 Conservation Achievements

**Cumulative 12-month conservation greater than 20%
and 12-month average R-GPCD less than 75 gallons**

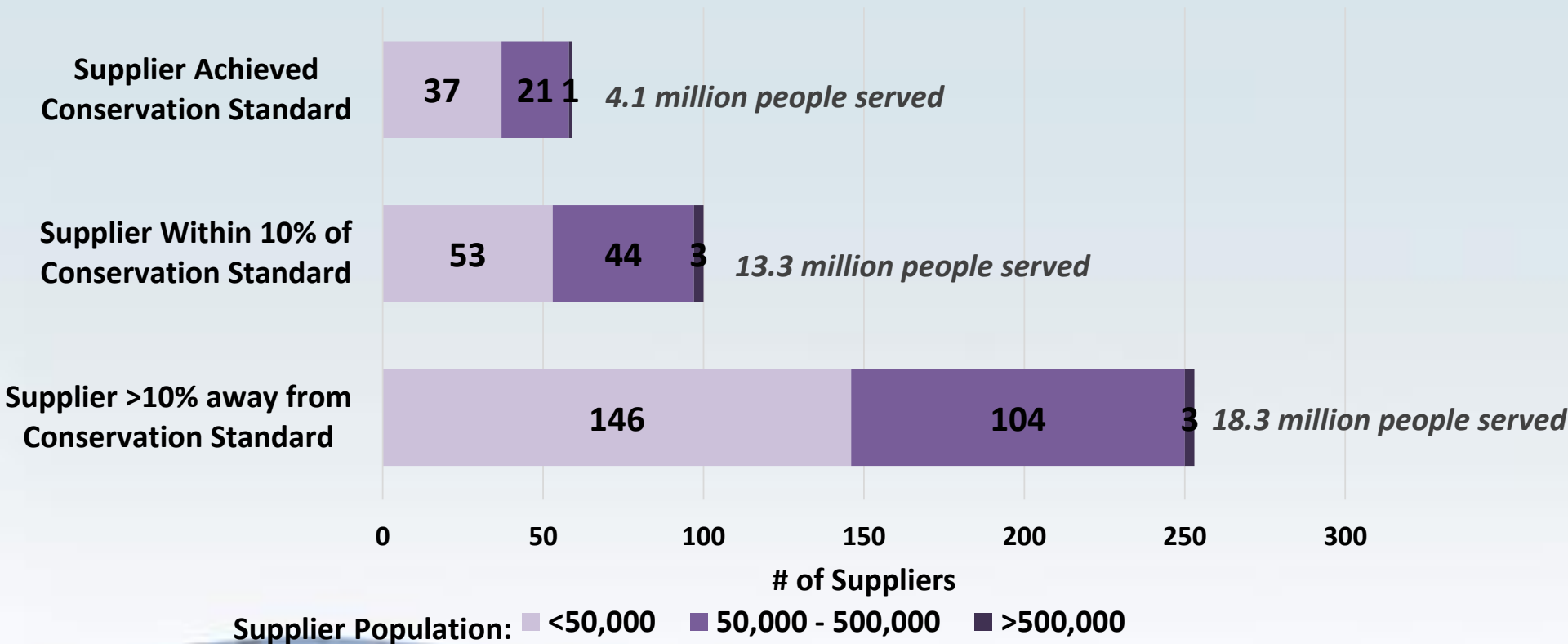
- **Alameda County Water District**
- **Santa Cruz City of**
- **Santa Barbara City of**
- **Dublin San Ramon Services District**
- **Soquel Creek Water District**
- **Calaveras County Water District**
- **San Lorenzo Valley Water District**
- **Menlo Park City of**
- **Cambria Community Services District**
- **California Water Service Company Redwood Valley**

Conservation Tiers

Conservation Standard	# Suppliers	Population Served
4%	5	83,050
8%	24	2,248,691
12%	22	1,877,869
16%	42	10,259,223
20%	61	6,076,675
24%	45	2,259,421
28%	78	6,400,928
32%	58	3,593,157
36%	65	2,770,266
Grand Total	400	35,569,280

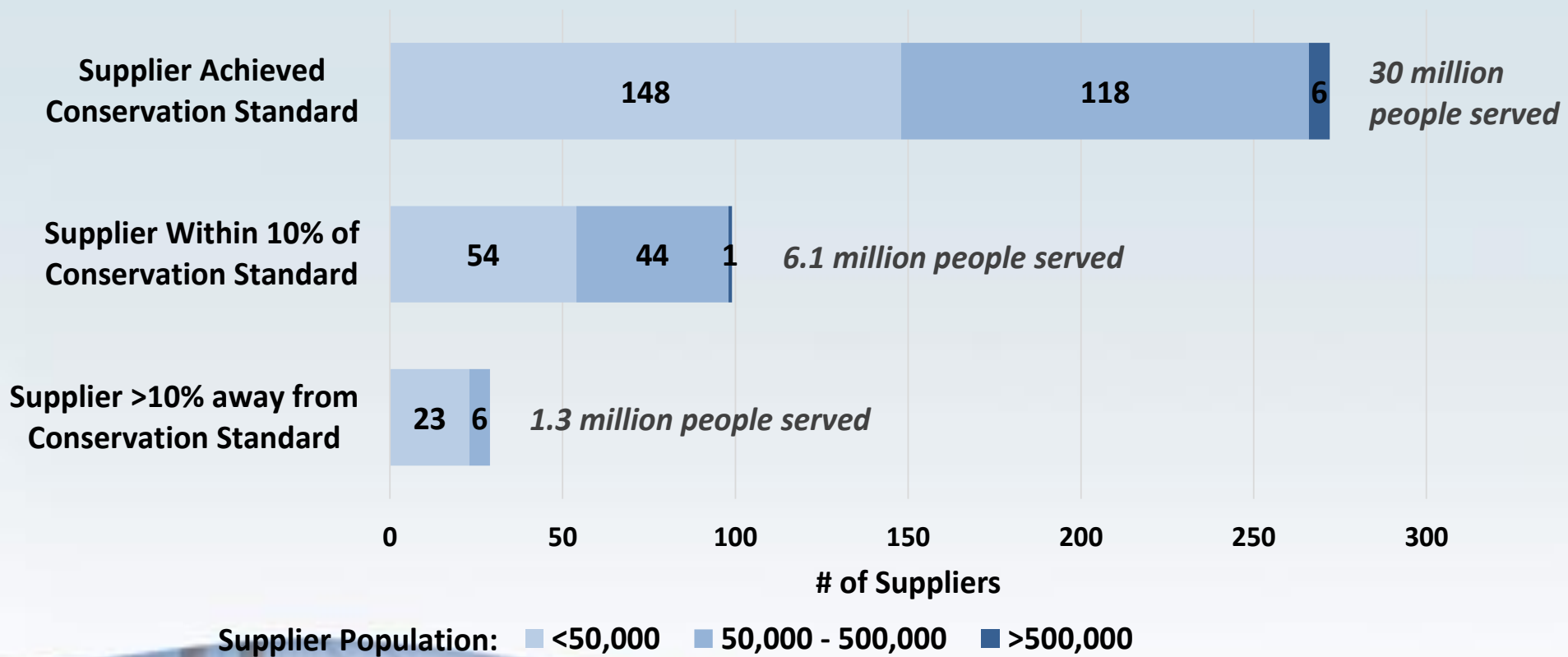
Conservation Tiers

June 2014 – May 2015 Cumulative Savings compared to Conservation Standard (effective June 1, 2015)



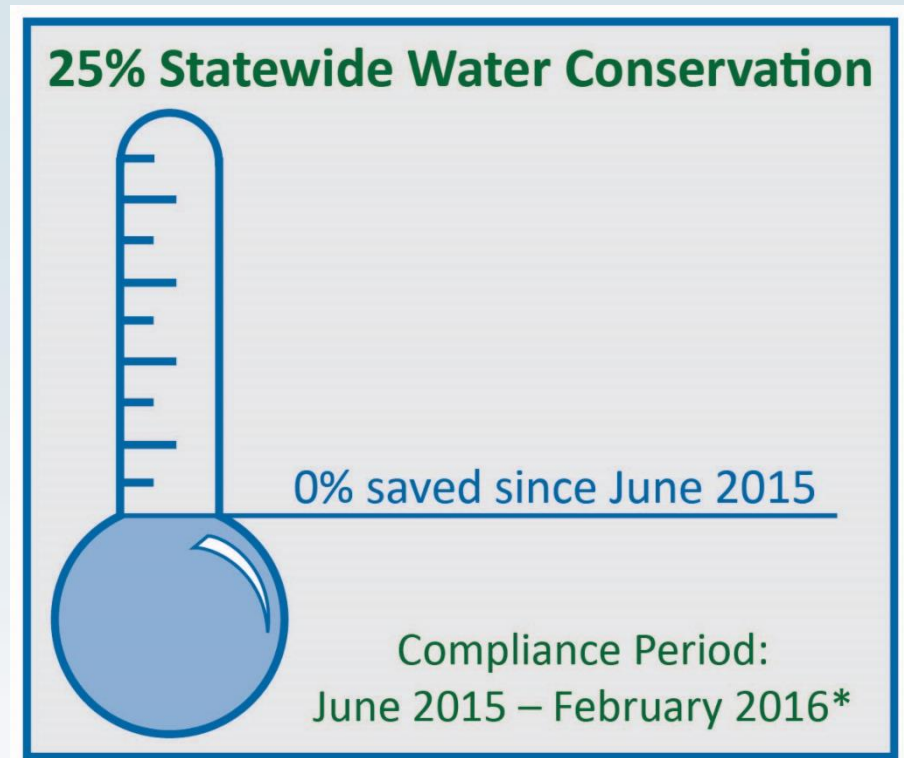
Conservation Tiers

May 2015 Savings compared to Conservation Standard (effective June 1, 2015)



Next Steps

- June 2015 water production numbers submitted July 15, 2015
- Enforcement actions begin July 16, 2015
- New reporting on actions taken to meet conservation standard



*As compared to the equivalent months in 2013
Updated on 7/7/15

Enforcement Actions

- Enforcement tools include:
 - Information Orders
 - Conservation Orders
 - Cease and Desist Orders
- Level of enforcement action will depend on multiple factors:
 - Distance from conservation standard
 - Actions implemented to meet conservation standard
 - Ability to implement additional conservation measures
 - Other case-specific determinations



Additional Actions

- July 8, 2015 workshop on rates and pricing
 - Directive 8 from Governor's April 1, 2015 Executive Order
- Alternate compliance assessments
- 4% tier determinations
- Commercial agriculture certifications
- Workgroup development

