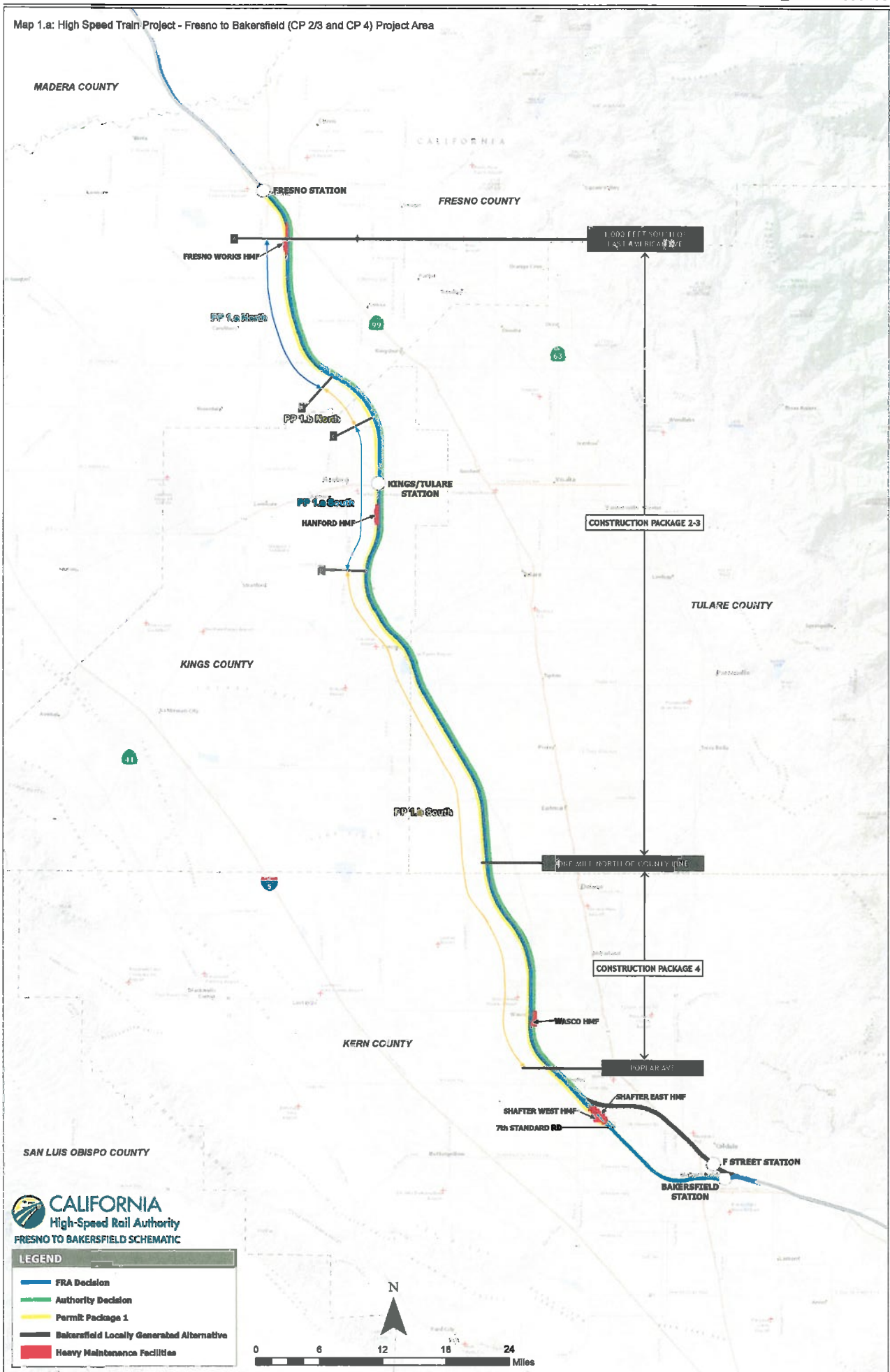


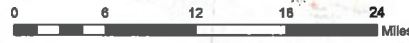
Map 1.a: High Speed Train Project - Fresno to Bakersfield (CP 2/3 and CP 4) Project Area



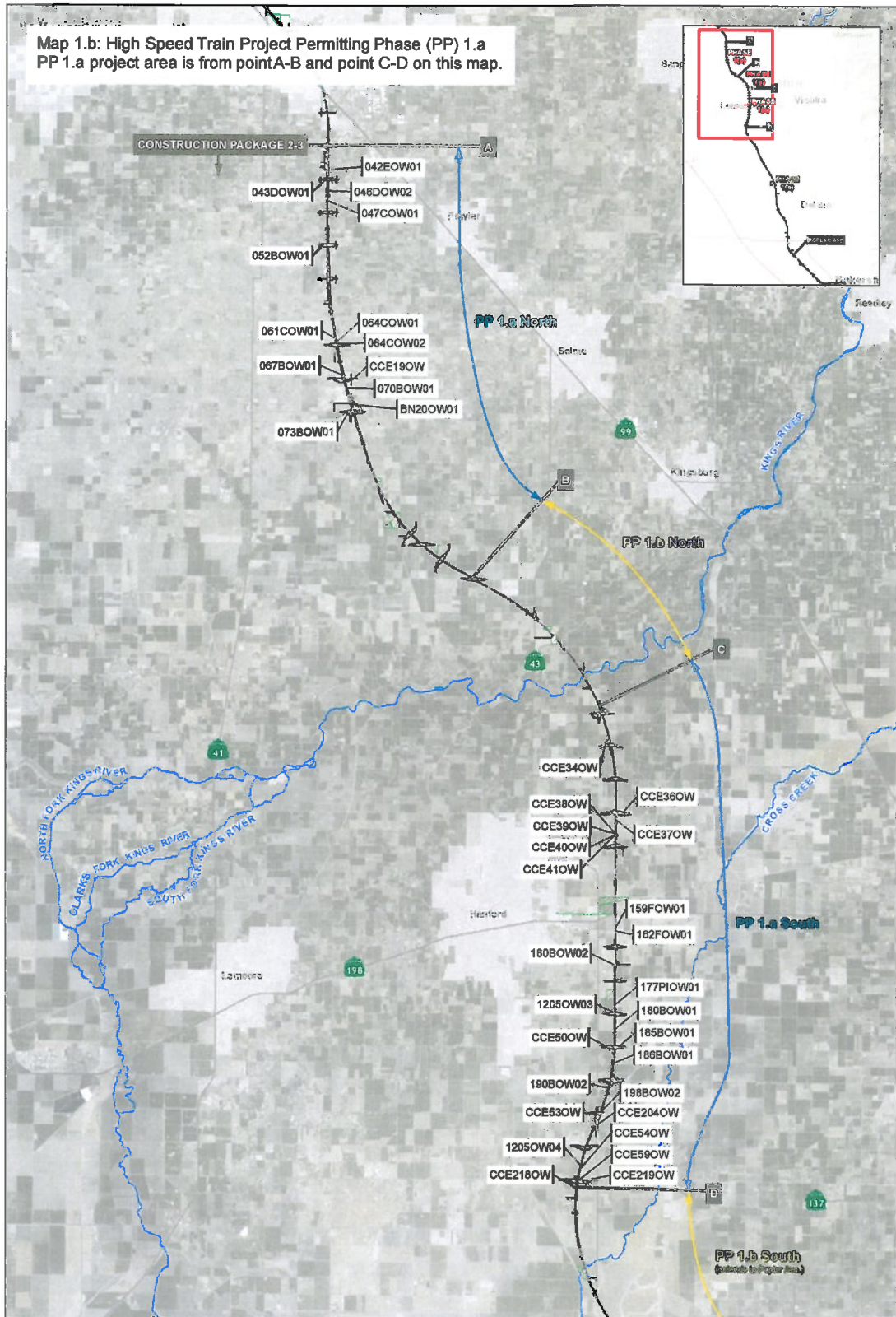
CALIFORNIA
 High-Speed Rail Authority
 FRESNO TO BAKERSFIELD SCHEMATIC

LEGEND

- FRA Decision
- Authority Decision
- Permit Package 1
- Bakersfield Locally Generated Alternative
- Heavy Maintenance Facilities



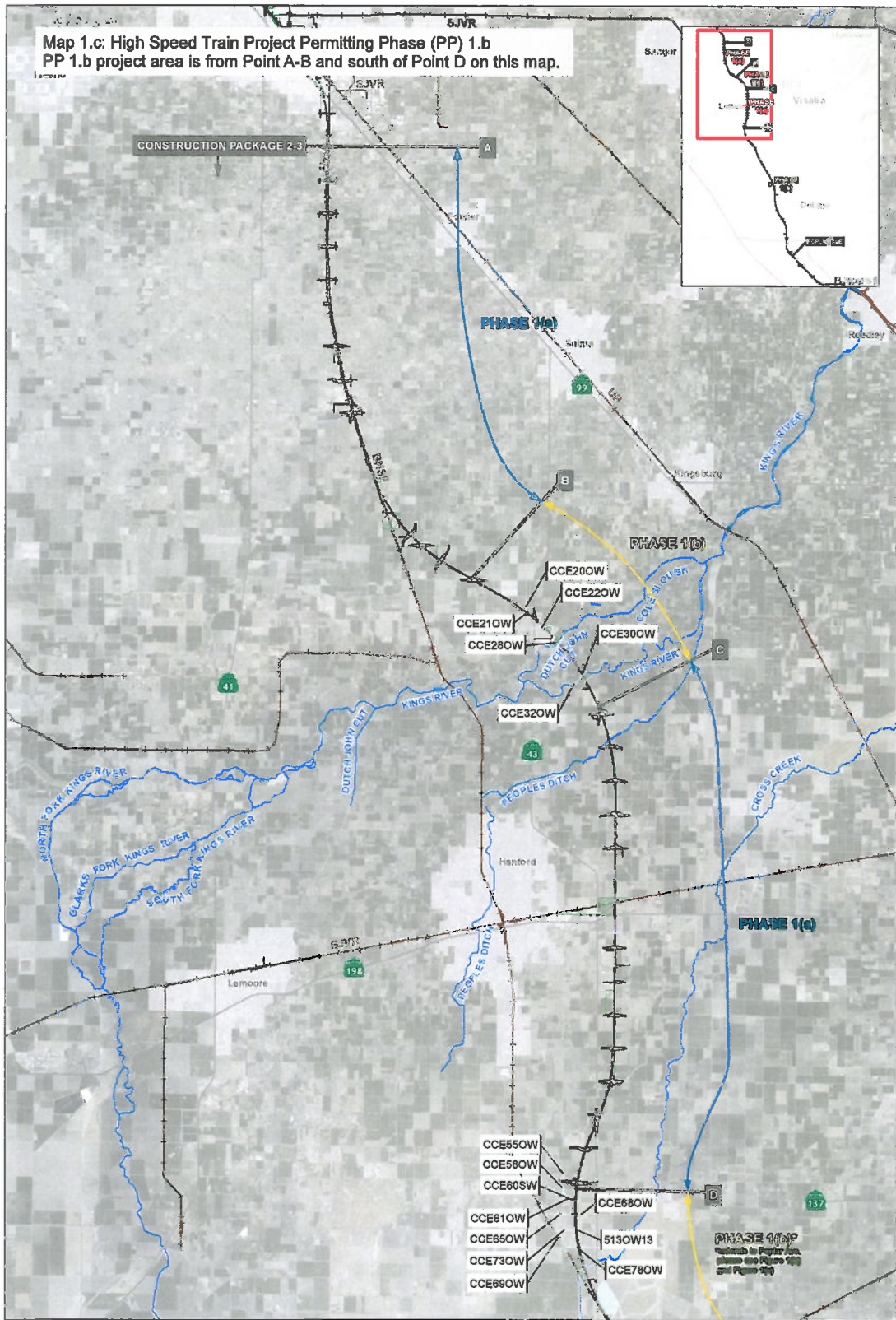
Map 1.b: High Speed Train Project Permitting Phase (PP) 1.a
 PP 1.a project area is from point A-B and point C-D on this map.



FOOTPRINT IS FROM SECTION 401 WATER QUALITY CERTIFICATION APPLICATION (MARCH 2014)
 PRELIMINARY DRAFT/SUBJECT TO CHANGE - HSR ALIGNMENT IS NOT DETERMINED
 Source: URS/HMM/Arup Joint Venture, 2009-2015; Esri 2009 and 2016.

December 21, 2016

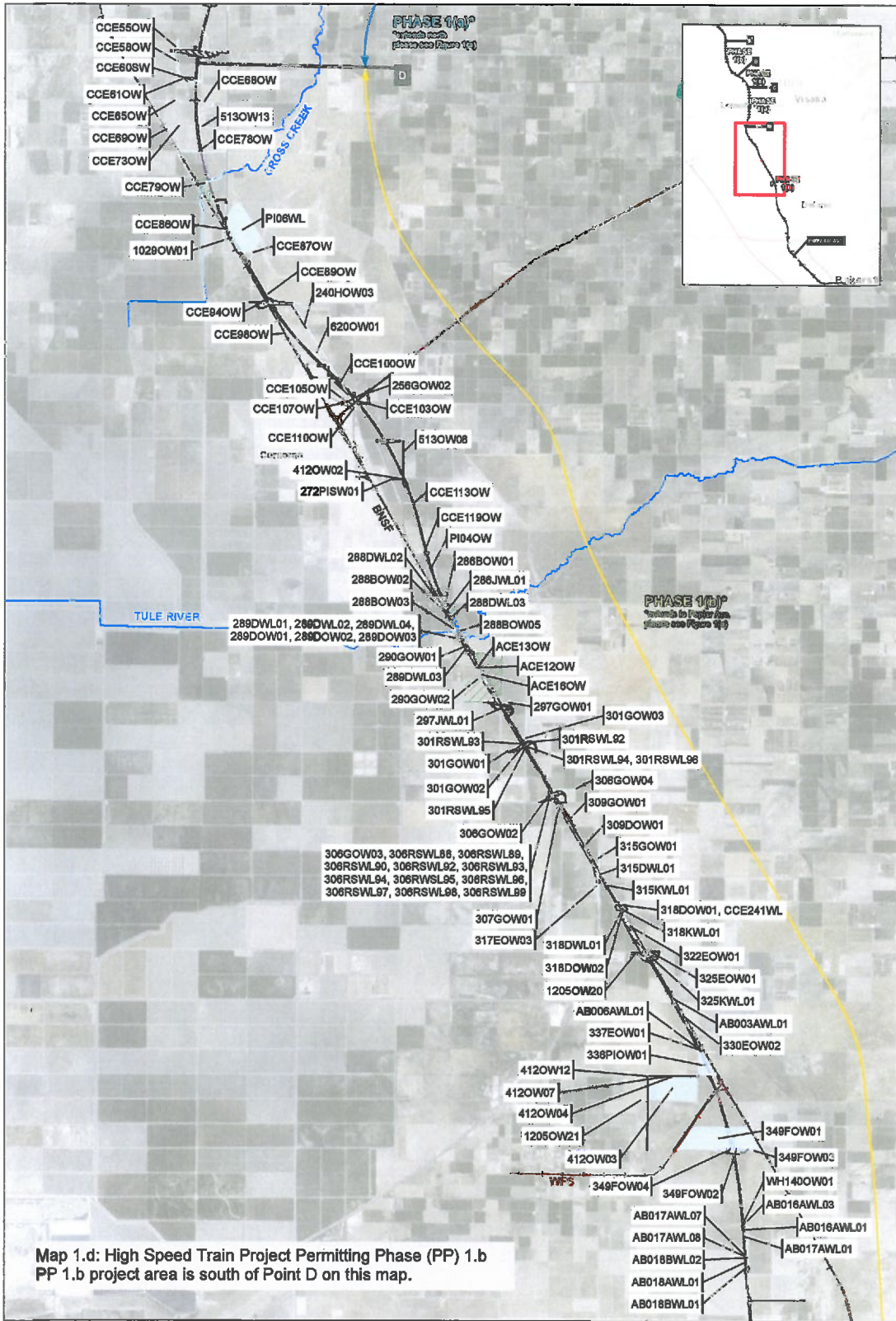
Highway Hydrographic Feature Water Feature Feature ID	Impact Type Direct - Permanent Direct - Temporary Temporary No Fill
--	---



FOOTPRINT IS FROM SECTION 401 WATER QUALITY CERTIFICATION APPLICATION (MARCH 2014)
PRELIMINARY DRAFT/SUBJECT TO CHANGE - HSR ALIGNMENT IS NOT DETERMINED
Source: URB/PMW/Anup Joint Venture, 2009-2015; East 2003 and 2016.

January 16, 2017

<ul style="list-style-type: none"> — Highway — Hydrographic Feature — Railroad — Water Feature — Feature ID — City Boundary 	<p>Impact Type</p> <ul style="list-style-type: none"> ▨ Direct - Permanent ▨ Direct - Temporary ▨ Temporary No Fill
---	---

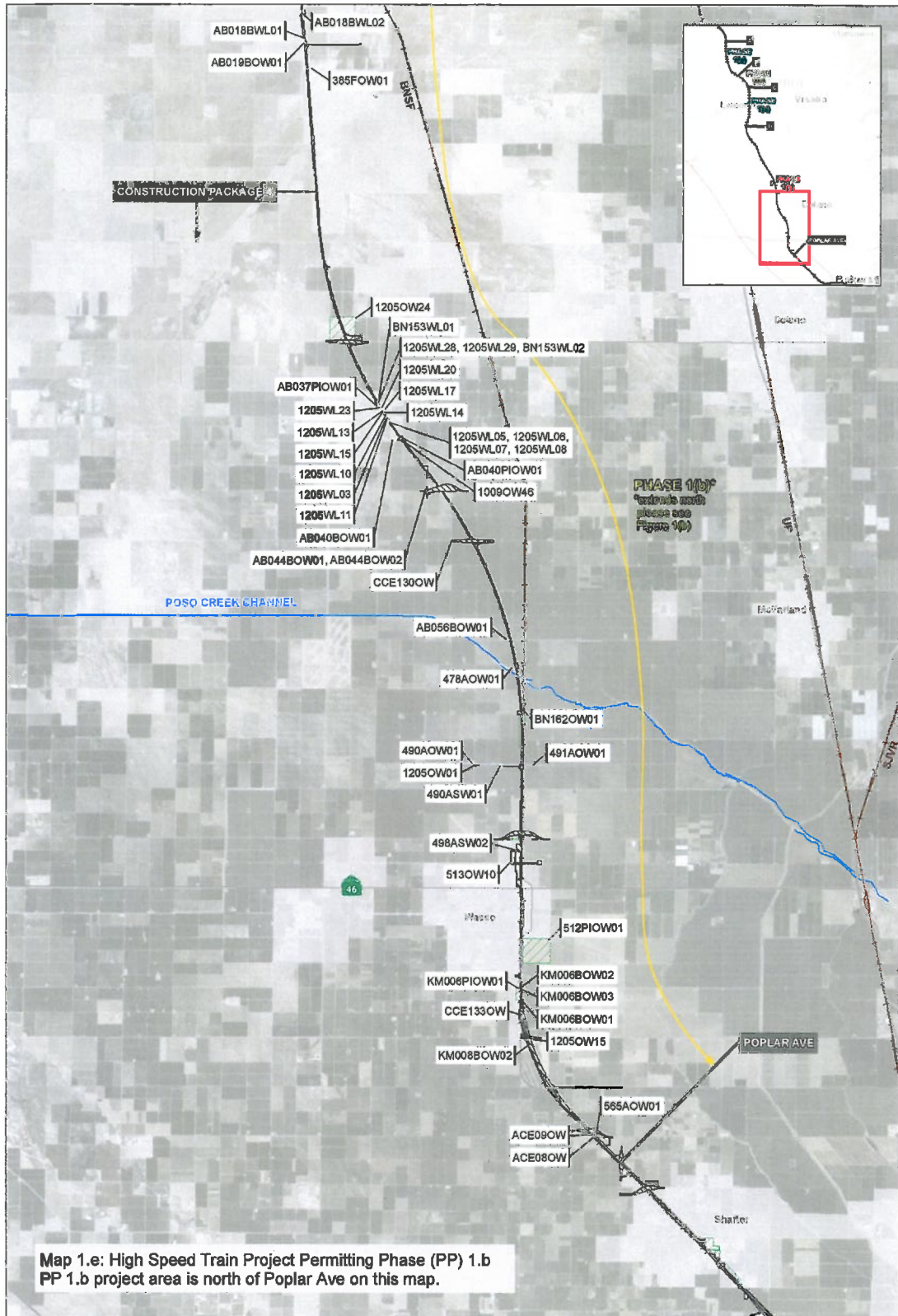


Map 1.d: High Speed Train Project Permitting Phase (PP) 1.b
 PP 1.b project area is south of Point D on this map.

FOOTPRINT IS FROM SECTION 401 WATER QUALITY CERTIFICATION APPLICATION (MARCH 2014)
 PRELIMINARY DRAFT/SUBJECT TO CHANGE - HSR ALIGNMENT IS NOT DETERMINED
 Source: URS/HMM/Arup Joint Venture, 2009-2015; Esri 2003 and 2016.

January 16, 2017

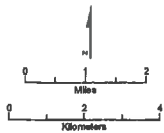
<ul style="list-style-type: none"> Highway Hydrographic Feature Railroad Water Feature Feature ID City Boundary 	<ul style="list-style-type: none"> Impact Type Direct - Permanent Direct - Temporary Temporary No Fill
---	--



Map 1.e: High Speed Train Project Permitting Phase (PP) 1.b
PP 1.b project area is north of Poplar Ave on this map.

FOOTPRINT IS FROM SECTION 401 WATER QUALITY CERTIFICATION APPLICATION (MARCH 2014)
PRELIMINARY DRAFT/SUBJECT TO CHANGE - HSR ALIGNMENT IS NOT DETERMINED
Source: URS/HMM/Anup Joint Venture, 2009-2015; Esri 2003 and 2015.

January 16, 2017



- | | |
|------------------------|----------------------|
| — Highway | Impact Type |
| — Hydrographic Feature | ▨ Direct - Permanent |
| — Railroad | ▧ Direct - Temporary |
| — Water Feature | ▩ Temporary No Fill |
| — Feature ID | |
| — City Boundary | |